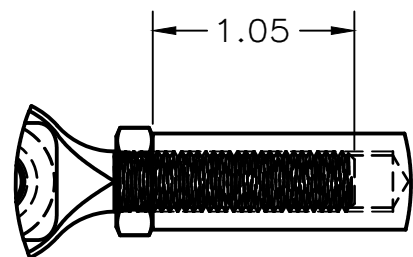
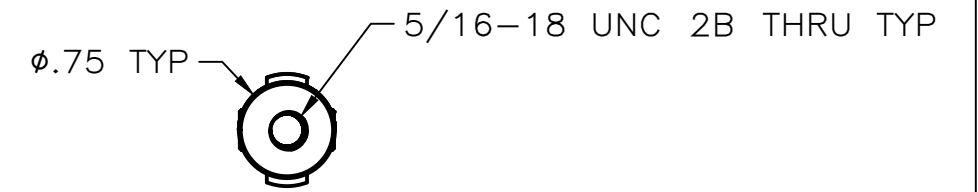
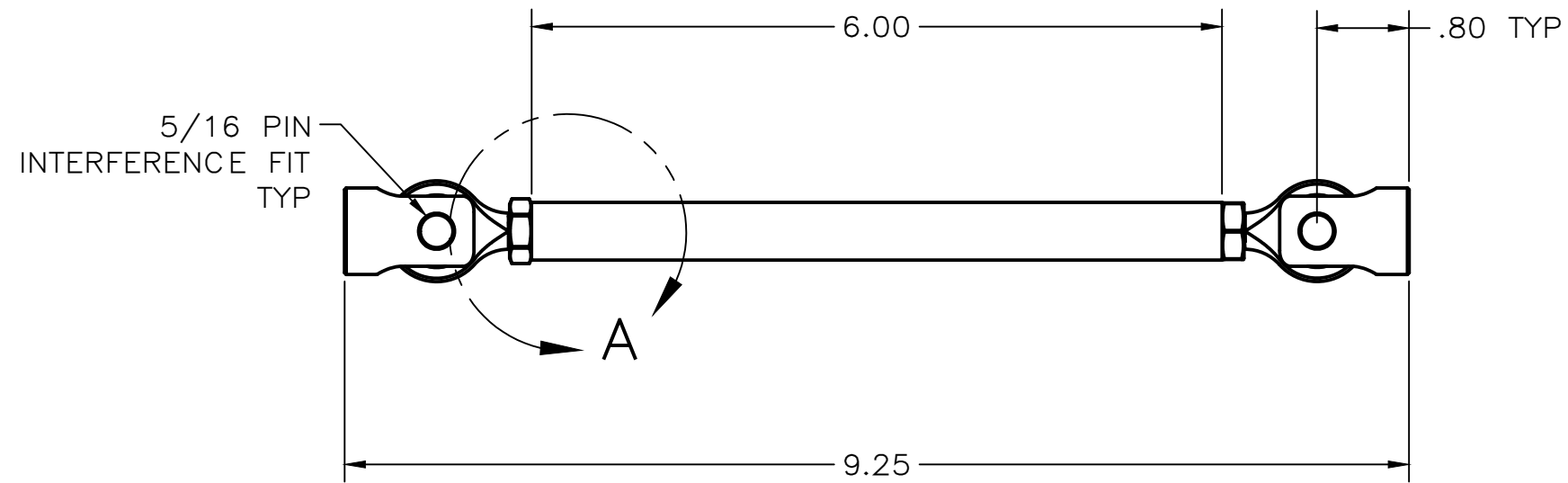


NOTES:

- BARREL LENGTH = (OVERALL LENGTH - 3.25")
- PIN TO PIN LENGTH = (OVERALL LENGTH - 1.60")



DETAIL A  
SCALE 1:1

This drawing provided by Fully Torqued Racing, Inc. is for manufacturing reference only. This design carries no guarantee or warranty of any kind (functional, safety, or otherwise). Fully Torqued Racing, Inc., its employees, and its contractors shall not be held liable for the contents of this drawing.

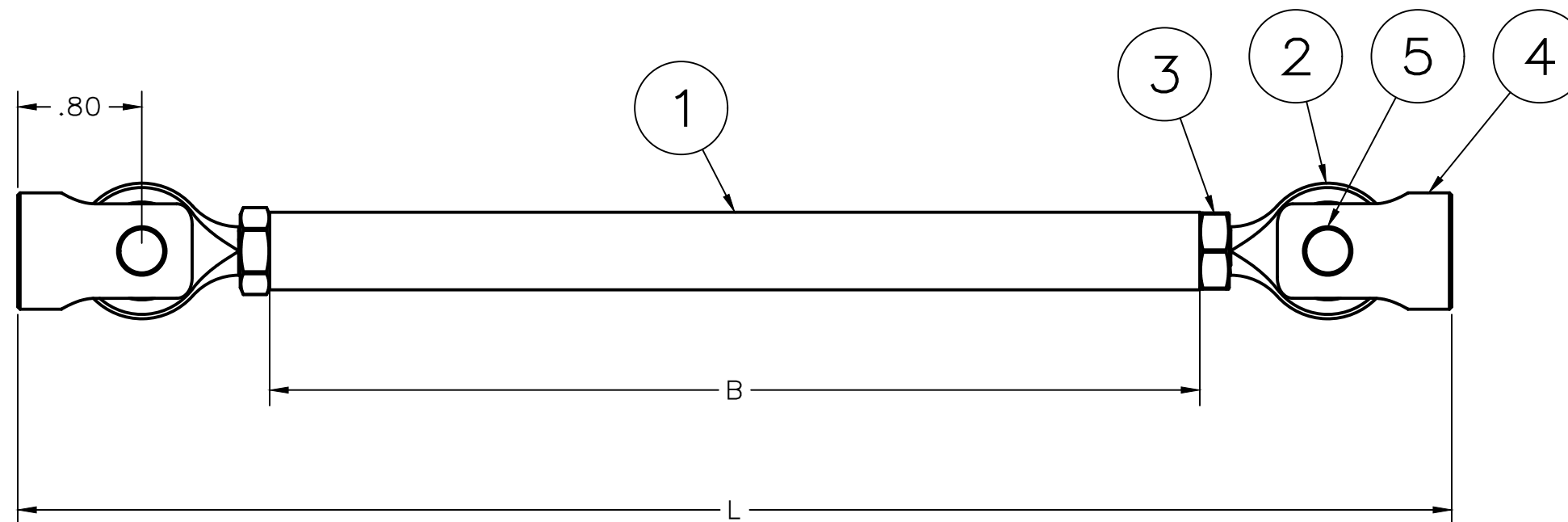
ALL DIMENSIONS ARE IN INCHES		PROJECT		<b>FTR</b>
REMOVE BURRS AND BREAK EDGES LESS THAN .010		<b>AL SUPPORT ROD</b>		
TOLERANCES		TITLE		
DECIMAL:	ANGLES:	<b>SUPPORT ROD, 9.25-11"</b>		
X REF	X REF	<b>FTR-111-925</b>		
X.X REF	X.X REF	SIZE	CODE	DWG NO
X.XX REF	X.XX REF	B		FTR-111-925-ASSY
X.XXX REF	X.XXX REF	SCALE 1:4		WEIGHT
APPROVED	CHECKED	DRAWN		SHEET 1/2
				REV A

LENGTH CHART			
SKU	L MIN	L MAX	B
FTR-111-750	7.50	9.25	4.25
FTR-111-925	9.25	11.00	6.00
FTR-111-1100	11.00	12.75	7.75


PARTS LIST		
ITEM	QTY	PART NUMBER
1	1	111-B BARREL
2	2	CM5 ROD END, 5/16
3	2	5/16-24 JAM NUT
4	2	111-1 CLEVIS
5	2	111-3 PIN

NOTES:

- 1) L = OVERALL LENGTH, NOMINAL
- 2) B = BARREL LENGTH, (L - 3.25)
- 3) IT IS RECOMMENDED TO BE NEAR THE LOWER END OF THE LENGTH ADJUSTMENT RANGE



This drawing provided by Fully Torqued Racing, Inc. is for manufacturing reference only. This design carries no guarantee or warranty of any kind (functional, safety, or otherwise). Fully Torqued Racing, Inc., its employees, and its contractors shall not be held liable for the contents of this drawing.

ALL DIMENSIONS ARE IN INCHES		PROJECT		
REMOVE BURRS AND BREAK EDGES LESS THAN .010		AL SUPPORT ROD		
TOLERANCES		TITLE		
DECIMAL:	ANGLES:	SUPPORT ROD		
X REF	X REF	FTR-111		
X.X REF	X.X REF	SIZE	CODE	DWG NO
X.XX REF	X.XX REF	B		FTR-111-925-ASSY
X.XXX REF	X.XXX REF	DRAWN	SCALE 1	WEIGHT
				SHEET 2/2
APPROVED				REV
CHECKED				A