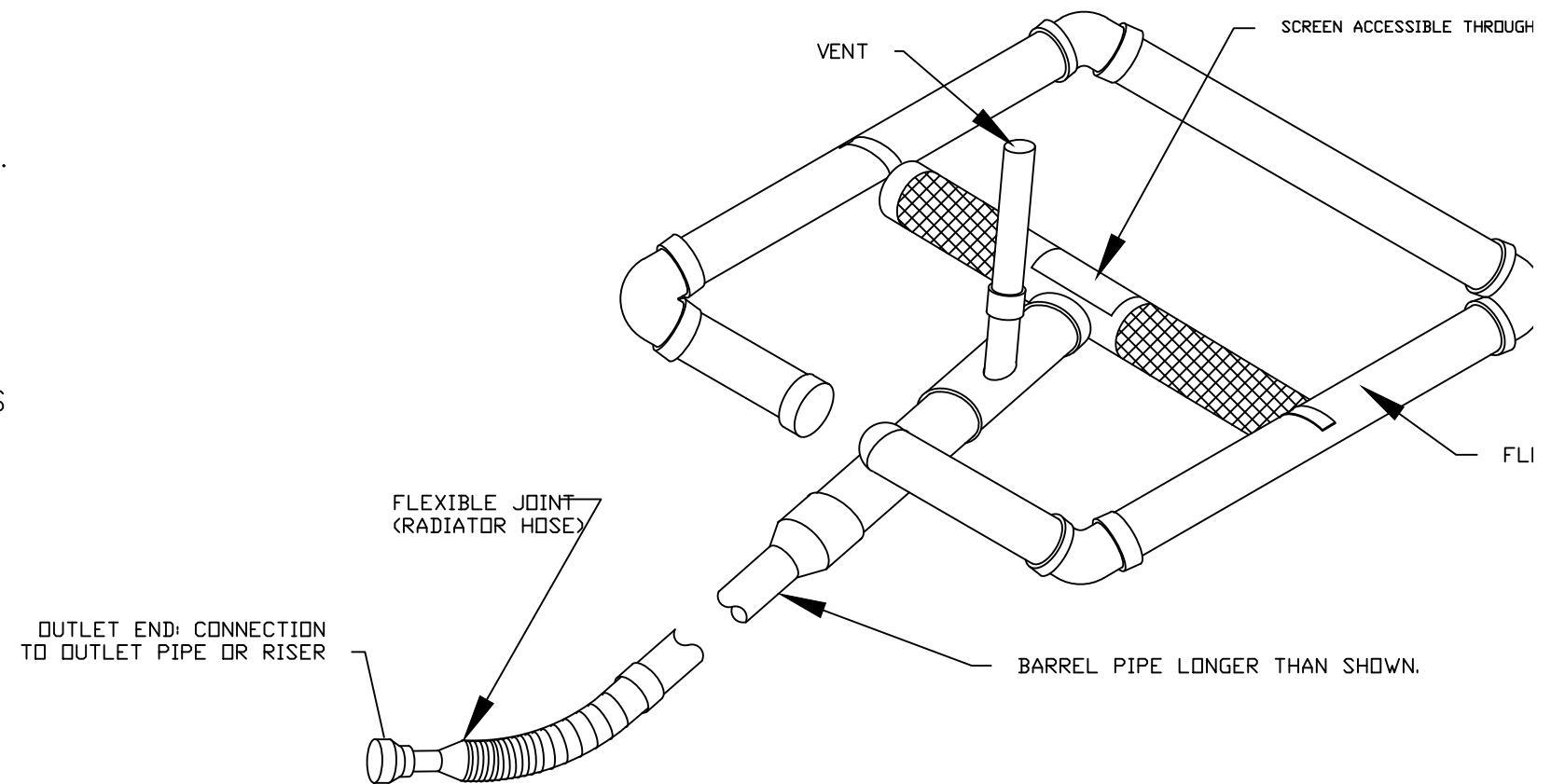


MAINTENANCE NOTES:

1. INSTALL A PAD FOR SKIMMER TO REST ON STONE OR WOOD PALLETS OR H-BEAM SECTION.
2. INSTALL SKIMMER AND PAD AWAY FROM BAFFLES.
3. ATTACH ROPE TO SKIMMER FOR MAINTENANCE
4. INSPECT THE BASIN ON A REGULAR BASIS AND AFTER EVERY SIGNIFICANT RAINFALL EVENT (1 INCH OR GREATER).
5. CHECK THE SKIMMER TO MAKE SURE THAT IT IS NOT CLOGGED WITH SEDIMENT.
6. REMOVE SEDIMENT THAT MAY ACCUMULATE ON THE STONE PAD UNDERNEATH THE SKIMMER DEVICE.



EFFECTIVE: 10/15/2025

## STANDARD SKIMMER DETAIL