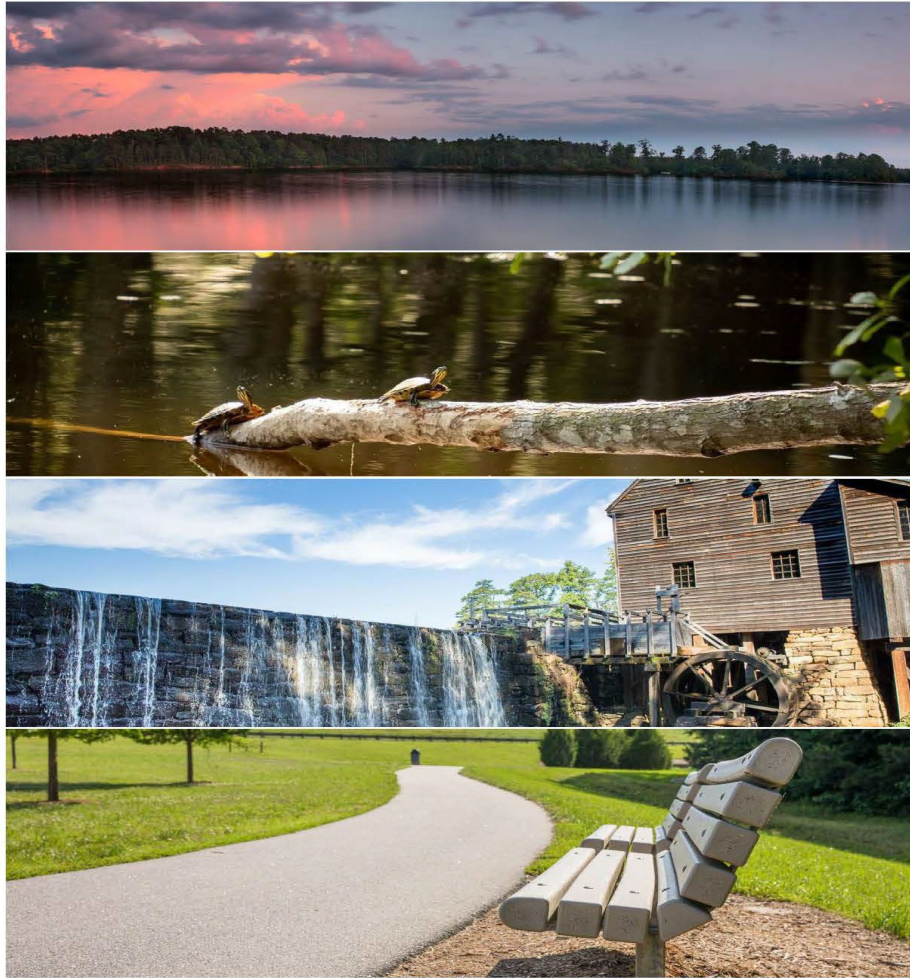




CALL TO ARTIST / REQUEST FOR QUALIFICATIONS PUBLIC ART FOR WAKE COUNTY PARKS



DEADLINE FOR SUBMISSIONS

2:00 PM (EST) Friday, May 24th, 2024

WCArtistCallParks@wake.gov

I. Call to Artist/Request for Qualifications for Public Art

Wake County seeks to commission professional artists to create site-specific exterior artwork to be placed at 7 Wake County Parks being renovated through Wake County's Capital Improvement Plan as described below. There will also be additional future public art opportunities in Wake County parks associated with this RFQ beyond the initial 7 projects. It is anticipated that multiple artists will be selected for these services. The selected artists will contract directly with Wake County to successfully complete the full scope of the Project within the projected budgets and schedules.

In 2017, Wake County adopted a Public Art Administrative Policy. The intent of the policy is to enhance the aesthetic environment, expand public experience and exposure to culture through various art forms, enhance the appearance of public facilities and improve the environment of the county on behalf of its citizens, by the incorporation of art in the design and construction of various public facilities within the county. County capital improvement projects estimated to cost \$1 million or more that provide significant general public access such as libraries, parks, and greenways shall be eligible for funding based upon the project construction cost.

This Request for Qualifications provides information on the scope of the project and information to aid in preparing responses. All inquiries regarding this Request for Qualifications must be in writing and must be submitted to the Project Manager listed below by the date identified in the Project timeline. To be considered, submissions must comply with the requirements outlined in this document. **(Refer to section V. Submission Requirements.)**

II. Scope of the Project

- A. Purpose: Wake County seeks to commission professional artists to create site-specific exterior artwork to be placed at 7 Wake County Parks.
- B. Project Budget: **\$50,000.00 Per Park (All inclusive – design and construction).**
This amount is inclusive of all costs associated with this public art project including, but not limited to, artist fees, other consultants' and subcontractors' fees, insurance conforming to Wake County standards, engineering, permits, materials, fabrication, transportation, installation (including any site modification), and post installation documentation.

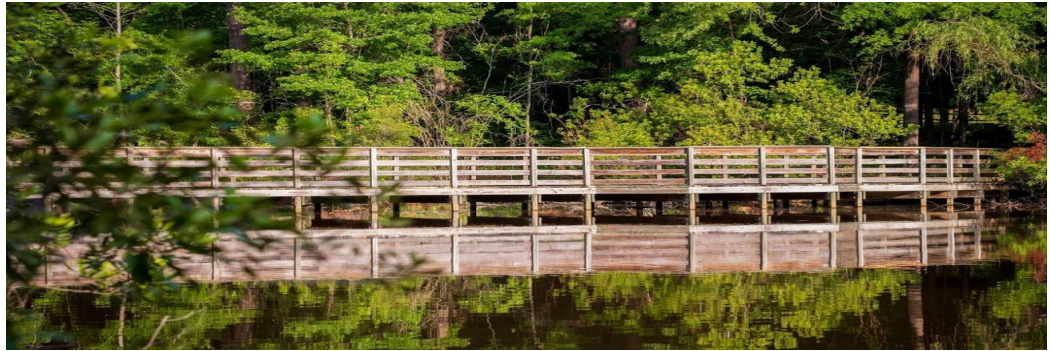
- C. Overall Project Background & Context: Based on the park master plans the project provides opportunities to incorporate public art pieces throughout the site. The public art pieces may be interactive and educational as well as visual and should be consistent with the parks project goals. A park system context map and conceptual master plans for each park are included in the exhibits at the end of this document. The full parks master plan document is available with this link: <https://s3.us-west-1.amazonaws.com/wakegov.com.if-us-west-1/s3fs-public/documents/2021-01/Wake%20Parks%20Master%20Plan-February%202017.pdf>
- D. Scope Overview: As the overall design for each park continues to be developed, the selected artists will have the opportunity to engage with the design team, through the final stages of the design process.
- E. Projects:

1) Blue Jay Point County Park



- a. Location: 3200 Pleasant Union Church Road, Raleigh, NC 27614
- b. Project Background & Context:
This 236-acre park features hiking trails, shoreline fishing, picnic areas, playgrounds, open play fields and Go Ape Treetop Courses. Additional information about the park is available with this link: <https://www.wake.gov/departments-government/parks-recreation-open-space/all-parks-trails/blue-jay-point-county-park>
- c. Park Schedule:
In design 2024.

2) Crowder County Park



- a. Location: 4709 Ten-Ten Road, Apex, NC 27539
- b. Project Background & Context:
Crowder County Park, which opened in 1998 is comprised of 33 acres with an additional 96 acres recently added and provides a variety of educational and recreational activities for all ages along with accessibility-maintained trails. Additional information about the park is available with this link:
<https://www.wake.gov/departments-government/parks-recreation-open-space/all-parks-trails/crowder-county-park>
- c. Park Schedule:
In design 2025.

3) Green Hills County Park



- a. Location: 9300 Deponie Drive, Raleigh, NC 27614
- b. Project Background & Context:
Green Hills Park (formerly North Wake Landfill District Park) is a 36 acre park that has nearly 5 miles of paved and unpaved trails, a playground, picnic shelter and two hilltop observation areas. Additional information about the park is available with this link:
<https://www.wake.gov/departments-government/parks-recreation-open-space/all-parks-trails/green-hills-county-park>

- c. Park Schedule:
In design 2024.

4) **Harris Lake County Park**



- a. Location: 2112 County Park Drive, New Hill, NC 27562
- b. Project Background & Context:
Harris Lake County Park is a 680-acre park that is situated near the Shearon Harris Reservoir in New Hill and includes kayaking, educational programs, disc golf, along with biking and hiking trails.
Additional information about the park is available with this link:
<https://www.wake.gov/departments-government/parks-recreation-open-space/all-parks-trails/harris-lake-county-park>
- c. Park Schedule:
In design 2024.

5) **Historic Oak View County Park**



- a. Location: 4028 Carya Drive, Raleigh, NC 27610
- b. Project Background & Context:
Historic Oak View County Park is a 27-acre park in the southeast part of Wake County that interprets North Carolina's diverse agrarian past and invites families to explore daily farm life.

Additional information about the park is available with this link:

<https://www.wake.gov/departments-government/parks-recreation-open-space/all-parks-trails/historic-oak-view-county-park>

- c. Park Schedule:
In design 2024.

6) Historic Yates Mill County Park



- a. Location: 4620 Lake Wheeler Road, Raleigh, NC 27603
- b. Project Background & Context:
Historic Yates Mill County Park is a 174-acre park in the southwestern part of Wake County that is home to the last operable water-powered gristmill in the County. The Mill was placed on the National Register of Historic Places in 1974 and hosts over 100,000 visitors per year.
Additional information about the park is available with this link:
<https://www.wake.gov/departments-government/parks-recreation-open-space/all-parks-trails/historic-yates-mill-county-park>
- c. Park Schedule:
In design 2024.

7) Lake Crabtree County Park



- a. Location: 1400 Aviation Parkway, Morrisville, NC 27560

- b. Project Background & Context:
Lake Crabtree, the first established County park, is a 520-acre park in the western part of Wake County that offers visitors opportunities for outdoor recreation and includes more than 16 miles of trails.
Additional information about the park is available with this link:
<https://www.wake.gov/departments-government/parks-recreation-open-space/all-parks-trails/lake-crabtree-county-park>

- c. Park Schedule:
In design 2025.

Note: The commissioned artist will also be issued a set of construction documents for the project. The selected artist shall verify all dimensions prior to the commencement of work.

III. Artist Commission Requirements

If commissioned, the successful Artist shall be responsible for the following:

- A. **This is a national call, open to artists in the continental U.S over the age of 18.**
- B. Perform all services and furnishing supplies, material, and equipment as necessary for the design, permitting, execution, fabrication, transportation, and installation of the Work at the Site. This includes participation in coordination meetings as necessary with the design team.
- C. Submit to Wake County detailed drawings of the commissioned Work to carry out architectural and engineering design reviews and to certify compliance of the Work with applicable statutes and ordinances.
- C. Strictly adhere to and manage the approved project, budget, and schedule.
- D. Provide an Operations and Maintenance guideline to the County for their respective art piece(s).
- E. Bear the entire risk of loss or damage to the Work during design, fabrication, packing, shipping, and installation.
- F. Provide and maintain insurance to cover claims for damages for personal injury, bodily injury (including wrongful death), and property damage. The artist shall require all subcontractors to provide and maintain insurance. A complete list of insurance requirements will be provided to project finalist.
- G. In general, the County shall own the physical works of art, and copyrights shall be retained by the artist, with reproduction rights allowed to the County for appropriate

promotional and educational purposes. Legal title and copyrights in any work of public art funded in whole or in part by direct County funding, shall be spelled out in a mutually agreeable contract between the County and the artist.

IV. Submission Schedule & Location

A. Submissions deadline: **2:00 PM (EST) Friday, May 24th, 2024**
Any submissions received after deadline time will be ineligible.

B. Schedule Information:	
Post RFQ	April 26, 2024
Written Inquiries must be received by	May 10, 2024
Reponses to Inquiries	May 17, 2024
Submissions are due by 2:00PM (EST)	Friday May 24, 2024
Finalist(s) selected and notified for Site Visit	Week of June 24, 2024
Finalist(s) Interviews	Week of July 15, 2024
Commission awarded	July 2024

Wake County FD&C reserves the right to modify this schedule as required.

V. Submission Requirements

All applications must be submitted electronically as a single PDF file. The PDF file, no larger than 15MB is to be emailed to WCArtistCallParks@wake.gov by the deadline, **2:00 PM (EST) on Friday, May 24th, 2024**. Label PDF file as follows: **(Last Name-First Name-Middle Initial- ArtistCallParks)**. Incomplete applications, and any applications submitted after the deadline will be deemed ineligible and not be considered. Submission shall include the following:

A. Format

Cover Sheet:

- Include name, address, telephone, email, website (if applicable) of the Artist to receive all Project Information, or any official correspondence relating to the Project.
- Please reference the Project name, Wake County Public Art for Parks, on all correspondence.

Section 1: Artist Resume & References (No longer than 3 pages – including additional team members or subconsultants resumes)

- Include a list of public art projects, completed during the past ten (10) years, selected public art projects, awards, current gallery affiliations, and grants/fellowships.

Section 2: Digital Images of Past Work

- Images of Previous Work. Please closely observe the following guidelines for the submittal of digital images:
 - Submit eight (8) images featuring select examples of previous public art projects with particular emphasis on works of a similar scope or utilizing similar techniques. Each image shall be numbered and include title, date of completion / installation, budget, media, dimensions, location, and a brief description of the work.

Section 3: Statement (No longer than 2 pages)

- Artist Statement
 - Describe the conceptual basis for your body of work. In a separate paragraph, explain your experience working and coordinating with landscape architectural / architectural / engineering teams when incorporating art into a site and facility.

Email Submission to (PDF shall be no larger than 15MB):

WCArtistCallParks@wake.gov

* Wake County reserves the right to request additional information from each individual artist.

B. Other Requirements

1. Any cost incurred in preparing or submitting a Request for Qualifications for the Project shall be the respondents' responsibility.
2. All responses, inquiries or correspondence relating to this Request for Qualifications will become the property of Wake County when received (subject to Section VII – Confidentiality).
3. Please contact the Facilities Project Manager at the address and email shown below for a copy of the Request for Qualifications. If a question of general concern is asked, an addendum will be issued to include a copy of the written response.
4. Respondents are advised to refrain from contact with Selection Committee members. Any specific questions regarding the Request for Qualifications should be directed to the Project Manager at the following address and email:

Paula Lambert
Facilities Project Manager
County of Wake Facilities Design & Construction
Wake County Office Building, 11th Floor
P.O. Box 550, Raleigh, NC 27602
TEL (919) 418-0603
WCArtistCallParks@wake.gov

5. Wake County has sole discretion and reserves the right to reject any and all responses received with respect to this Request for Qualifications and to cancel the process at any time prior to entering into a formal agreement. The County reserves the right to request additional information or clarification of information provided in the response without changing the terms of the Request for Qualifications.

VI. Evaluation Criteria & Process

A Selection Committee of eleven (11) individuals, will select the artist that best meets the requirements, based on the information contained in their response to the Request for Qualifications. Specifically, in the selection of a finalist, the Selection Committee will review and consider the following:

- A. The conceptual basis for the Artist's body of work as defined in the written statement.
- B. The technical and aesthetic quality of the artist's past work as represented in the image submissions.
- C. Artist's experience successfully designing, fabricating, administering, and completing public art projects and/or custom architectural elements on time and in budget.
- D. Artist's experience successfully completing prior work in accordance with the Owner's schedule and budget.
- E. Artist's experience working collaboratively with a project team, including Owner, Landscape Architect, Architect and General Contractor
- F. The artist's education and training.
- G. The quality and comprehensiveness of the submission package.

The intent of the process is to flow as efficiently as possible while following the dates indicated in Section IV. After submission deadline, the selection committee will review each submission and will narrow the pool of applicants for interviews. The initial interview process may be in-person or virtual.

Each of the finalists selected for in-person interviews will be provided a stipend of two thousand dollars (\$2,000.00) to facilitate travel to Raleigh, North Carolina with the intent of familiarizing the finalist to the park site. Site visits will terminate with the Selection Committee interviewing each of the finalists. Once interviews are completed, Wake County will contact the selected artists and retain the services of the selected artists via an initial design contract. Once design is completed and approved, a final fabrication contract will be issued to the artist for completion of the scope of work outlined in Section III, and further defined in the fabrication contract.

VII. Confidentiality of Documents

In general, documents that are submitted as part of the response to this Request for Qualifications will become public records and will be subject to public disclosure. North Carolina General Statutes Section 132-1.2 and 66-152 provide a method for protecting some documents from public disclosure. If the Artist or Artist Team follows the procedures prescribed by those statutes and designates a document “confidential” or “trade secret”, the County will withhold the document from public disclosure to the extent that it is entitled or required to do so by applicable law.

If the County determines that a document that the Artist has designated “confidential” or “trade secret” is not entitled to protection from public disclosure, the County will provide notice of that determination to the contact person designated by the Artist, in any reasonable manner that the County can provide such notice, at least five business days prior to its public disclosure of the document. If the Artist or Artist Team does not designate anyone to receive such notice, or if, within five business days after the designated person receives such notice, the Artist does not initiate judicial proceedings to protect the confidentiality of the document, the County will not have any obligation to withhold the document from public disclosure.

By submitting to the County a document that the Artist or Artist Team designates as “confidential” or “trade secret”, the Artist(s) agree that in the event a third party brings any action against the County or any of its officials or employees to obtain disclosure of the document the Artist(s) will indemnify and hold harmless the County and each organization’s affected officials and employees from all costs, including attorney’s fees incurred by or assessed against any defendant, of defending against such action. The Artist(s) also agrees that at the County’s request the firm will intervene in any such action and assume all responsibility for defending against it, and that the Artist(s) failure to do so will relieve the County of all further obligations to protect the confidentiality of the document.

The 7 existing Wake County Parks are circled in red below



NEW
NATURE PLAY: a new nature play area will support daily use and can be designed to support park programming.



ENHANCE
GREENWAY CONNECTIVITY: expand the trail system in the park to connect to regional greenway systems.

NEW
HEALING GARDEN: provide a quiet respite for self reflection, yoga, stretching, and connecting with self and nature.



NEW
BOG GARDEN: create a garden with opportunities for play and water quality education.



ENHANCE
PRAIRIE GARDEN: expand the garden by adding vegetation, interpretive signs, and seating areas.

NEW
BACK PORCH: add classroom space in the form of a large screened-in back porch similar to the classroom space at Prairie Ridge.



NEW
BOARDWALK: add boardwalk to link new "back porch" with existing boardwalk. Include kayak and water education access for staff access during programs and creative platforms for water interaction.



ENHANCE
BIRD GARDEN: provide opportunities for learning more about the connection between plants and birds and add a "nest" outdoor classroom.



ENHANCE
RAIN GARDEN: enhance the garden by adding interpretive signage and improving the conveyance and storage functions.

NEW
HEALTH & WELLNESS GARDEN: replace existing playground equipment and add multi-generational exercise equipment at this location and along the primary greenway trail.



ENHANCE
PARK CENTER: improve maintenance area, expand welcome center, add parking, and create a welcome plaza, focused on pedestrian arrivals and large enough for gatherings or check-in tents for special events.

ENHANCE
BUTTERFLY GARDEN: expand the garden and add interpretive signage.

NEW
DOG AMENITIES: add dog water fountains and additional waste stations along the trail to serve the large population of dogs in the park.



ENHANCE
CONNECTIVITY AND VISIBILITY: support installation of a sidewalk along Ten-Ten Road for pedestrian access and the exploration of a Complete Streets study to provide equity in transportation. Clear vegetation to improve visibility of existing entrance sign. Add a park sign at each property corner to indicate park entrance ahead. Work with NCDOT on adding sidewalks and fully controlled pedestrian crosswalks at Ten-Ten Road and Holly Springs Road to connect nearby neighborhoods and improve pedestrian access to the park.

ENHANCE
PARK ENTRANCE: explore realigning the entrance with Cortland Dr. during Ten-Ten Road Improvement Project.

MAIN VISION: Crowder District Park provides a sense of community in a suburban area. The park is a destination for daily health and physical activities, and serves as a place for family/group gatherings and education programming. Utilizing the natural and built elements, themed gardens and plantings, the park hopes to improve the connection between visitors and the environment. Connectivity to existing/future greenways and parks and the acquisition of surrounding property will allow Crowder District Park to expand its programs, facilities, services, and overall community presence.

Crowder District Park recommendations

two foot contours



NEW
INTERPRETIVE VEGETATION:
plant bands of native vegetation in colored patterns around the hill to illustrate the height the landfill grew over a period of time. Pair the plantings with interpretive signage around the park.

NEW
ART LOOP TRAIL + STORY FENCE:
create a loop trail around the northern mound to link with Abbotts Creek Trail. To prevent access to the mound, install a story fence to educate visitors about waste, recycling, and re-use.

NEW
ART ON THE HILL: provide a setting for student/community developed art to be placed on the mound.

NEW
TRAIL: to connect with Abbotts Creek Trail.

NEW
TRAIL: to connect with Abbotts Creek Trail.

NEW
ART ON THE HILL
(Visitors will view the art from the trail and surrounding area)

NEW
RECYCLE PLAY: a different take on nature play using recycled materials instead of natural elements to coincide with the theme of the park.

ENHANCE
PLAYGROUND: to provide shade for youth and adults.

NEW
LOOP TRAIL: create a greenway trail that loops the perimeter of the road and connects uses throughout the park with dog support facilities including fountains and waste stations.

NEW
PARKING: to serve mountain biking trails.

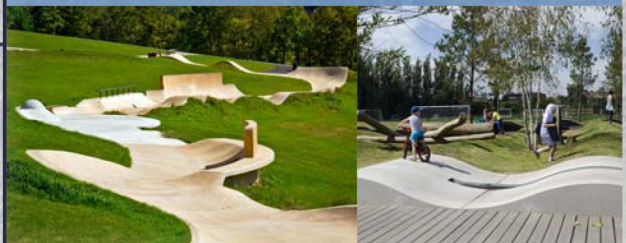
NEW
ADA ACCESSIBLE TRAIL: a new trail leading to the top of the main hill will be manageable for those with limited physical abilities with gradual slopes, landings, benches, and shade.

NEW
PARKING: this lot will accommodate visitors to the skate trails and art loop.

ENHANCE
MOUNTAIN BIKE TRAILS: expand the trail network as planned in the previous master plan.

ENHANCE
TOP OF THE HILL: to provide shade while preserving views.

NEW
SKATE TRAIL: create a trail system with below-ground level and above-ground ramps. Plazas, railings, and jumps will be created specifically for tricks and challenges for multiple levels. The loop trail will continue on the outside of the skate trail to provide connectivity and observation.



NEW
PARKING: to serve top of the hill trail.

NEW
TRAIL: to connect with the school.

NEW
DUMPSTER PLANTERS: up-cycle dumpsters as planters to provide shade without penetrating the mound. Enlist artists to design each dumpster to tell a story of energy, consumption, and human impacts on the earth.



NEW
TRANSIT CONNECTION: work with CAT to create a stop near the park entrance.

NEW
CHANGE THE NAME: create a committee or hold a contest to create a new name better aligned with the main vision.

(Now Green Hill Park)

MAIN VISION: this park brings waste, conservation, recycling, and re-use to the forefront of visitor experience. Opportunities will be created throughout the park to reflect on the importance of conscious use of materials, human effects on the earth, and how re-thinking materials—which some consider trash—can become beautiful art and vehicles for creativity and recreation.

North Wake Landfill District Park recommendations



MAIN VISION: Harris Lake is the "Destination for the Day," a place to reconnect with nature through recreational and educational opportunities. There is something here for each family member to enjoy—be it fitness and health-related activities or just back to the simple things in life like fishing and family picnicking. It is nature that connects play, education, and overall human development together.

NEW CAMPING: provision of an area for on-site camping was supported by the public during the planning process. Further exploration is recommended to determine where to site the camping, which type of camping will be permitted, and how this addition will affect rules, regulations, and staffing.

ENHANCE HIKING TRAILS: add wayfinding, mile markers, and interpretive signage to help navigate and celebrate the mission of the park.

NEW LOOP ROAD AND GREENWAY: use the service road to expand vehicular circulation toward the point and bring users to additional places within the park. Create a minimum 10' wide ADA greenway loop to enhance access and serve users who prefer this surface type to soft surface trails.

NEW NAME EACH POND: mark each pond with a naming sign and add names of the ponds to the trail maps to aid in navigation.

ENHANCE DISC GOLF: create courses that are ADA accessible and youth friendly.

ENHANCE MAINTENANCE AREA: expand the maintenance area to better suit the needs of the grounds, programming, and staff.

NEW PARKING AND COMFORT STATION: to accommodate disc golf and tree top trail users.

ENHANCE MOUNTAIN BIKING NETWORK: create sustainable trails and improve rider experience to accommodate a wider variety of skill levels. Enhance the existing trails with signage.

NEW PARK CENTER: design a new solar-powered, energy efficient park center to become the official arrival point for visitors. Include offices, indoor classrooms, display areas, restrooms, and storage. Add sufficient parking to accommodate events and groups using the new center.

ENHANCE PLAYGROUNDS AND WATER ACCESS: expand the natural play area and upgrade the existing playground. Enhance water access by creating a kayak/paddleboard/canoe launch with ADA accessibility. Explore the potential of adding a vendor to rent human powered watercraft.

NEW GREENWAY CONNECTIVITY: expand the trail system in the park to connect to regional greenway systems.

NEW TREE TOP TRAIL: create an elevated trail in the tree canopy that is ADA accessible with several overlooks, hammocks, and spaces that can serve as an outdoor classroom.



Harris Lake County Park recommendations



NEW FARM TO TABLE: look for opportunities that teach about farm-to-table methods using local farmers and food grown at Oak View.

PARK EXPANSION AREA: offer additional park features including a playground, walking and hiking paths, and fishing platform.

ENHANCE CONNECTIVITY: expand the trail system in the park to connect to Wake County office park and facilities.

NEW SOUND WALL

NEW FISHING PLATFORM

NEW PLAYGROUND

ENHANCE CROPS: expand opportunities to cultivate food on the farm and use for educational purposes.

ENHANCE REAL ANIMALS: Add more live animals to the farm to allow for enhanced interaction with farm life, an opportunity to learn about historic and present day practices, improved user experience, and expansion of the attractions on the farm.



ENHANCE PARKING AREA: add additional parking spaces.

ACCESSIBLE GARDEN: allow all users to experience the garden plots by widening the walking aisles and raising the garden beds to easier access.

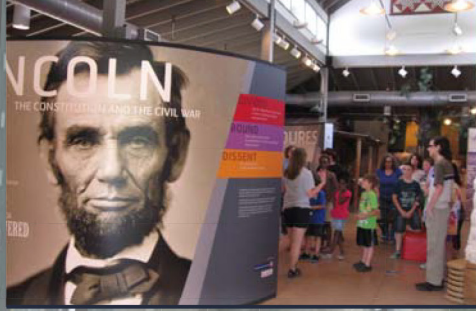


ENHANCE FORMAL ENTRY: provide designated entry into historic building.

ENHANCE PARKING AREA: add additional parking spaces.

ENHANCE TITLE SIGNAGE AND ADVANCED ENTRY SIGNAGE

ENHANCE MAIN FARMHOUSE: complete permanent exhibits.



ENHANCE FISHING ACCESS: improve access near the existing ponds for viewing and fishing while maintaining the natural "farm feel" of the edge of the lake.



ENHANCE CONNECTIVITY: expand the trail system in the park to connect to Wake County office park and facilities.

NEW PEDESTRIAN PATHWAYS: create a primary loop trail around the park and additional ADA accessible pathways to connect each park feature.



NEW INTERPRETIVE PLAY: create and enhance interpretive play spaces throughout the park that allow for interactive learning and user activities that simulate life on the farm.

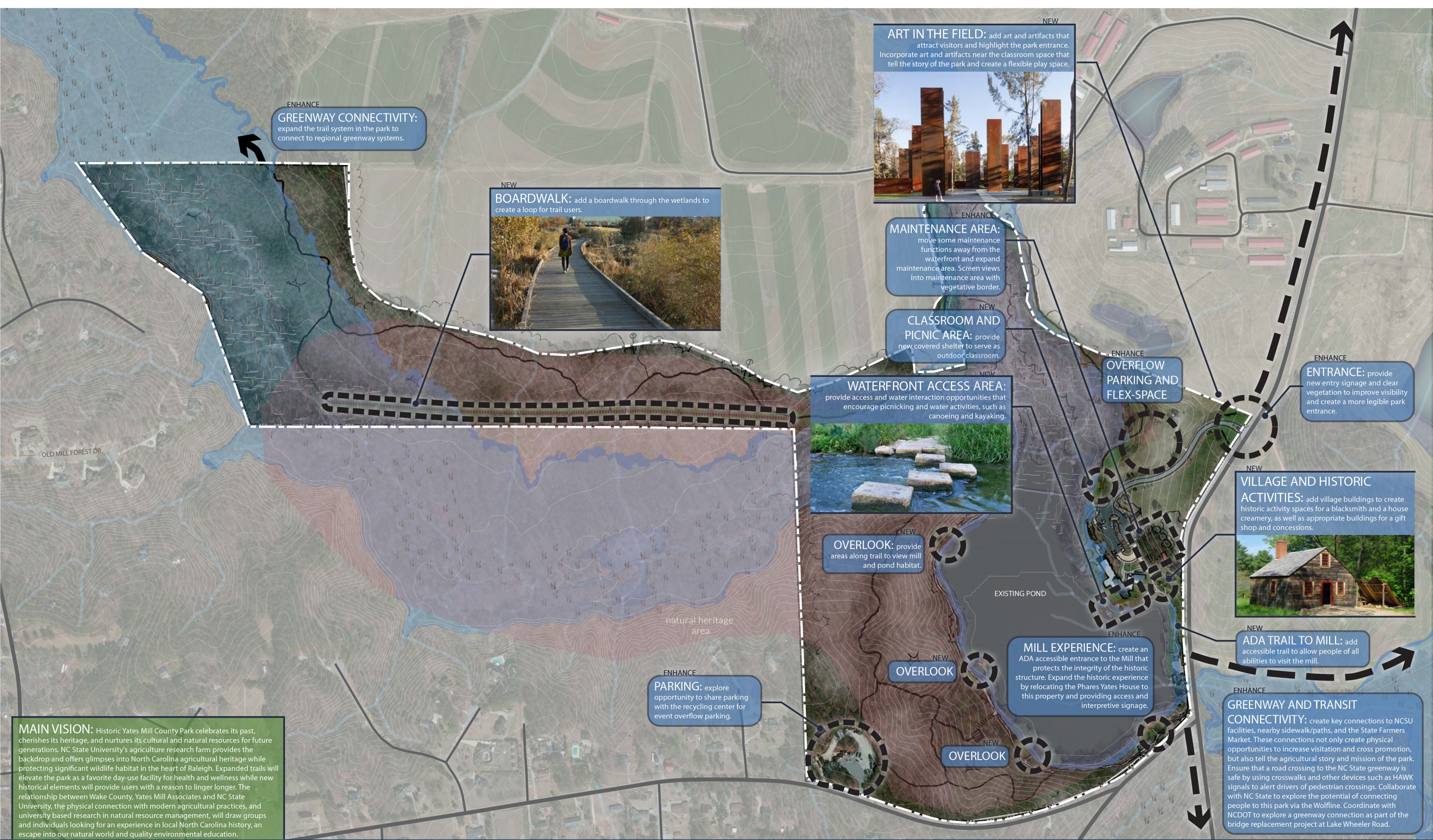


ENHANCE SIDEWALK AND TRANSIT CONNECTIVITY: expand the trail system in the park to connect to proposed sidewalk facilities, public transit systems, and other recreational amenities, such as the Neuse River Trail.

MAIN VISION: Historic Oak View County Park interprets North Carolina's diverse agrarian past and invites families to explore and connect with daily farm life. Expanding the park's educational and recreational opportunities will enhance the visitor experience and broaden its role in the community.

Historic Oak View County Park recommendations





ENHANCE GREENWAY CONNECTIVITY: expand the trail system in the park to connect to regional greenway systems.

NEW BOARDWALK: add a boardwalk through the wetlands to create a loop for trail users.



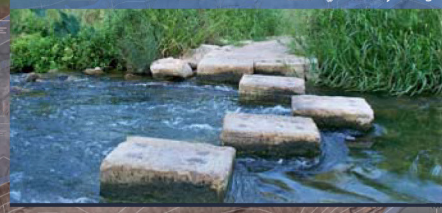
NEW ART IN THE FIELD: add art and artifacts that attract visitors and highlight the park entrance. Incorporate art and artifacts near the classroom space that tell the story of the park and create a flexible play space.



ENHANCE MAINTENANCE AREA: move some maintenance functions away from the waterfront and expand maintenance area. Screen views into maintenance area with vegetative border.

NEW CLASSROOM AND PICNIC AREA: provide new covered shelter to serve as outdoor classroom.

NEW WATERFRONT ACCESS AREA: provide access and water interaction opportunities that encourage picnicking and water activities, such as canoeing and kayaking.



ENHANCE OVERFLOW PARKING AND FLEX-SPACE

ENHANCE ENTRANCE: provide new entry signage and clear vegetation to improve visibility and create a more legible park entrance.

NEW VILLAGE AND HISTORIC ACTIVITIES: add village buildings to create historic activity spaces for a blacksmith and a house creamery, as well as appropriate buildings for a gift shop and concessions.



NEW OVERLOOK: provide areas along trail to view mill and pond habitat.

ENHANCE MILL EXPERIENCE: create an ADA accessible entrance to the Mill that protects the integrity of the historic structure. Expand the historic experience by relocating the Phares Yates House to this property and providing access and interpretive signage.

NEW ADA TRAIL TO MILL: add accessible trail to allow people of all abilities to visit the mill.

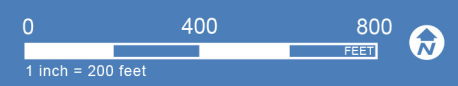
ENHANCE PARKING: explore opportunity to share parking with the recycling center for event overflow parking.

ENHANCE GREENWAY AND TRANSIT CONNECTIVITY: create key connections to NCSU facilities, nearby sidewalk/paths, and the State Farmers Market. These connections not only create physical opportunities to increase visitation and cross promotion, but also tell the agricultural story and mission of the park. Ensure that a road crossing to the NC State greenway is safe by using crosswalks and other devices such as HAWK signals to alert drivers of pedestrian crossings. Collaborate with NC State to explore the potential of connecting people to this park via the Wolfline. Coordinate with NCDOT to explore a greenway connection as part of the bridge replacement project at Lake Wheeler Road.

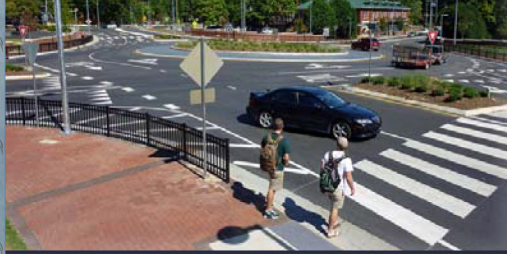
MAIN VISION: Historic Yates Mill County Park celebrates its past, cherishes its heritage, and nurtures its cultural and natural resources for future generations. NC State University's agriculture research farm provides the backdrop and offers glimpses into North Carolina agricultural heritage while protecting significant wildlife habitat in the heart of Raleigh. Expanded trails will elevate the park as a favorite day-use facility for health and wellness while new historical elements will provide users with a reason to linger longer. The relationship between Wake County, Yates Mill Associates and NC State University, the physical connection with modern agricultural practices, and university based research in natural resource management, will draw groups and individuals looking for an experience in local North Carolina history, an escape into our natural world and quality environmental education.

Historic Yates Mill County Park recommendations

two foot contours



CONNECTIVITY: improve connectivity with crosswalks, links to existing greenways, sidewalk connections to RDU, and coordination with area transit for stop locations and wayfinding. Extend trails across Aviation Parkway to increase total trail length.



ACCESSIBILITY RECOMMENDATIONS

ADA ACCESSIBLE PARKING: provide accessible parking spaces to all use areas and the primary loop trail.

ADA ACCESSIBLE TRAIL LOOP: enhance the existing loop trail to provide equality in mobility and access for all park users.

PARK CONNECTIVITY ACCESSIBILITY: renovate park trails and sidewalks to create ADA accessible paths connecting each use area in the park.

natural heritage area

SIDEWALK: to complete the pedestrian connection from the entrance and tie into the new park loop.

TRAIL EXPANSION AREA

BOARDWALK: constructed in conjunction with future roadway improvements.

TRAILHEAD: provide a trailhead near the mountain biking trails that has a shelter, bike "fix it" station, restrooms, first aid station, and changing area.



GREENWAY CONNECTIVITY: collaborate with municipalities and the office parks to complete a loop around the lake.

PARK CENTER: create a new Park Center with an iconic building that provides an educational setting, a place for rest and relaxation, observation of the waterfront, and park support facilities. The iconic tower will be re-imagined to preserve the overlook while enhancing safety and accessibility.



BLUEWAY: add mile markers and resting places along a blueway trail that skirts the shoreline.

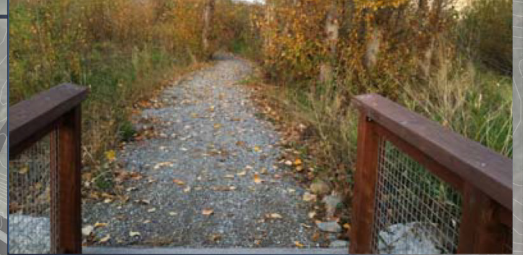


PARKING: expand existing parking areas.

GATHERING SPACE: provide a new picnic shelter and restrooms for large groups (over 100 people), new playground, and multi-generational park activities suitable for varied ages and abilities.



LOOP TRAIL: enhance the existing loop trail to become an ADA accessible Lake Loop. The route would improve connectivity throughout the park and provide new connections to the Cary and Morrisville greenway systems.



MAIN VISION: this park is truly "everyone's park." From the ADA accessible trails to the new accessible kayak launches, and connections with trails and transit—equity in recreation, leisure, and wellness is the focus. Multi-generational spaces create opportunities for the whole family to enjoy an hour or a whole day at the park. Water activities, peaceful trails, picnic shelters, and multi-use trails provide opportunities for enjoyment for daily activities and special events for all ages and abilities.

Lake Crabtree County Park recommendations

two foot contours

