



May 14, 2024 Second Primary Election

Federal and State Republican Contests Only

Sample Ballot Key & Combined Sample Ballots

- ✓ Election Day ballots are assigned to the specific precinct that coincides with the voter's election districts.
- ✓ Eligible voters for this election include any voters that are affiliated with the Republican Party, Unaffiliated voters who voted in the Republican Primary in March, and Unaffiliated voters who did not vote in any March Primary.
- ✓ View your voter information to find your assigned sample ballot at: <https://vt.ncsbe.gov/RegLkup/>



**Board
of Elections**

05/14/2024 2NDPRIMARY ELECTION Sample Ballot Key

	Precinct	Party	US Cong	Sup Ct	Dist Ct	NC Sen	NC Hse	CCom	Ballot Style
	01-01	REP	N/A	N/A	N/A	N/A	N/A	N/A	R0001
	01-02	REP	N/A	N/A	N/A	N/A	N/A	N/A	R0001
	01-03	REP	N/A	N/A	N/A	N/A	N/A	N/A	R0001
	01-04	REP	N/A	N/A	N/A	N/A	N/A	N/A	R0001
	01-05	REP	N/A	N/A	N/A	N/A	N/A	N/A	R0001
	01-06	REP	N/A	N/A	N/A	N/A	N/A	N/A	R0001
	01-07	REP	N/A	N/A	N/A	N/A	N/A	N/A	R0001
	01-07A	REP	N/A	N/A	N/A	N/A	N/A	N/A	R0001
	01-09	REP	N/A	N/A	N/A	N/A	N/A	N/A	R0001
	01-10	REP	N/A	N/A	N/A	N/A	N/A	N/A	R0001
	01-11	REP	N/A	N/A	N/A	N/A	N/A	N/A	R0001
	01-12	REP	N/A	N/A	N/A	N/A	N/A	N/A	R0001
	01-13	REP	N/A	N/A	N/A	N/A	N/A	N/A	R0001
	01-14	REP	N/A	N/A	N/A	N/A	N/A	N/A	R0001
	01-15	REP	N/A	N/A	N/A	N/A	N/A	N/A	R0001
	01-16	REP	N/A	N/A	N/A	N/A	N/A	N/A	R0001
	01-17	REP	N/A	N/A	N/A	N/A	N/A	N/A	R0001
	01-18	REP	N/A	N/A	N/A	N/A	N/A	N/A	R0001
	01-19	REP	N/A	N/A	N/A	N/A	N/A	N/A	R0001
	01-20	REP	N/A	N/A	N/A	N/A	N/A	N/A	R0001
	01-21	REP	N/A	N/A	N/A	N/A	N/A	N/A	R0001
	01-22	REP	N/A	N/A	N/A	N/A	N/A	N/A	R0001
	01-23	REP	N/A	N/A	N/A	N/A	N/A	N/A	R0001
	01-25	REP	N/A	N/A	N/A	N/A	N/A	N/A	R0001
	01-26	REP	N/A	N/A	N/A	N/A	N/A	N/A	R0001
	01-27	REP	N/A	N/A	N/A	N/A	N/A	N/A	R0001
	01-28	REP	N/A	N/A	N/A	N/A	N/A	N/A	R0001
	01-29	REP	N/A	N/A	N/A	N/A	N/A	N/A	R0001
	01-30	REP	N/A	N/A	N/A	N/A	N/A	N/A	R0001
	01-31	REP	N/A	N/A	N/A	N/A	N/A	N/A	R0001
	01-32	REP	N/A	N/A	N/A	N/A	N/A	N/A	R0001
	01-33	REP	N/A	N/A	N/A	N/A	N/A	N/A	R0001
	01-34	REP	N/A	N/A	N/A	N/A	N/A	N/A	R0001

	Precinct	Party	US Cong	Sup Ct	Dist Ct	NC Sen	NC Hse	CCom	Ballot Style
	01-35	REP	N/A	N/A	N/A	N/A	N/A	N/A	R0001
	01-36	REP	N/A	N/A	N/A	N/A	N/A	N/A	R0001
	01-37	REP	N/A	N/A	N/A	N/A	N/A	N/A	R0001
	01-38	REP	N/A	N/A	N/A	N/A	N/A	N/A	R0001
	01-39	REP	N/A	N/A	N/A	N/A	N/A	N/A	R0001
	01-40	REP	N/A	N/A	N/A	N/A	N/A	N/A	R0001
	01-41	REP	N/A	N/A	N/A	N/A	N/A	N/A	R0001
	01-42	REP	N/A	N/A	N/A	N/A	N/A	N/A	R0001
	01-43	REP	N/A	N/A	N/A	N/A	N/A	N/A	R0001
	01-44	REP	N/A	N/A	N/A	N/A	N/A	N/A	R0001
	01-45	REP	N/A	N/A	N/A	N/A	N/A	N/A	R0001
	01-46	REP	N/A	N/A	N/A	N/A	N/A	N/A	R0001
	01-47	REP	N/A	N/A	N/A	N/A	N/A	N/A	R0001
	01-48	REP	N/A	N/A	N/A	N/A	N/A	N/A	R0001
	01-49	REP	N/A	N/A	N/A	N/A	N/A	N/A	R0001
	01-50	REP	N/A	N/A	N/A	N/A	N/A	N/A	R0001
	01-51	REP	N/A	N/A	N/A	N/A	N/A	N/A	R0001
	02-01	REP	N/A	N/A	N/A	N/A	N/A	N/A	R0001
	02-02	REP	N/A	N/A	N/A	N/A	N/A	N/A	R0001
	02-03	REP	13	N/A	N/A	N/A	N/A	N/A	R0002
	02-04	REP	13	N/A	N/A	N/A	N/A	N/A	R0002
	02-05	REP	N/A	N/A	N/A	N/A	N/A	N/A	R0001
	02-06	REP	13	N/A	N/A	N/A	N/A	N/A	R0002
	03-01	REP	N/A	N/A	N/A	N/A	N/A	N/A	R0001
	03-02	REP	N/A	N/A	N/A	N/A	N/A	N/A	R0001
	04-01	REP	N/A	N/A	N/A	N/A	N/A	N/A	R0001
	04-02	REP	N/A	N/A	N/A	N/A	N/A	N/A	R0001
	04-03	REP	N/A	N/A	N/A	N/A	N/A	N/A	R0001
	04-04	REP	N/A	N/A	N/A	N/A	N/A	N/A	R0001
	04-05	REP	N/A	N/A	N/A	N/A	N/A	N/A	R0001
	04-06	REP	N/A	N/A	N/A	N/A	N/A	N/A	R0001
	04-07	REP	N/A	N/A	N/A	N/A	N/A	N/A	R0001
	04-08	REP	N/A	N/A	N/A	N/A	N/A	N/A	R0001
	04-09	REP	N/A	N/A	N/A	N/A	N/A	N/A	R0001
	04-10	REP	N/A	N/A	N/A	N/A	N/A	N/A	R0001

	Precinct	Party	US Cong	Sup Ct	Dist Ct	NC Sen	NC Hse	CCom	Ballot Style
	04-11	REP	N/A	N/A	N/A	N/A	N/A	N/A	R0001
	04-12	REP	N/A	N/A	N/A	N/A	N/A	N/A	R0001
	04-13	REP	N/A	N/A	N/A	N/A	N/A	N/A	R0001
	04-14	REP	N/A	N/A	N/A	N/A	N/A	N/A	R0001
	04-15	REP	N/A	N/A	N/A	N/A	N/A	N/A	R0001
	04-16	REP	N/A	N/A	N/A	N/A	N/A	N/A	R0001
	04-17	REP	N/A	N/A	N/A	N/A	N/A	N/A	R0001
	04-18	REP	N/A	N/A	N/A	N/A	N/A	N/A	R0001
	04-19	REP	N/A	N/A	N/A	N/A	N/A	N/A	R0001
	04-20	REP	N/A	N/A	N/A	N/A	N/A	N/A	R0001
	04-21	REP	N/A	N/A	N/A	N/A	N/A	N/A	R0001
	05-01	REP	N/A	N/A	N/A	N/A	N/A	N/A	R0001
	05-03	REP	N/A	N/A	N/A	N/A	N/A	N/A	R0001
	05-05	REP	N/A	N/A	N/A	N/A	N/A	N/A	R0001
	05-06	REP	N/A	N/A	N/A	N/A	N/A	N/A	R0001
	05-07	REP	N/A	N/A	N/A	N/A	N/A	N/A	R0001
	05-08	REP	N/A	N/A	N/A	N/A	N/A	N/A	R0001
	06-04	REP	N/A	N/A	N/A	N/A	N/A	N/A	R0001
	06-05	REP	13	N/A	N/A	N/A	N/A	N/A	R0002
	06-06	REP	N/A	N/A	N/A	N/A	N/A	N/A	R0001
	06-07	REP	N/A	N/A	N/A	N/A	N/A	N/A	R0001
	06-08	REP	N/A	N/A	N/A	N/A	N/A	N/A	R0001
	06-10	REP	N/A	N/A	N/A	N/A	N/A	N/A	R0001
	06-11	REP	N/A	N/A	N/A	N/A	N/A	N/A	R0001
	06-12	REP	N/A	N/A	N/A	N/A	N/A	N/A	R0001
	07-01	REP	N/A	N/A	N/A	N/A	N/A	N/A	R0001
	07-02	REP	N/A	N/A	N/A	N/A	N/A	N/A	R0001
	07-03	REP	N/A	N/A	N/A	N/A	N/A	N/A	R0001
	07-04	REP	N/A	N/A	N/A	N/A	N/A	N/A	R0001
	07-05	REP	N/A	N/A	N/A	N/A	N/A	N/A	R0001
	07-06	REP	N/A	N/A	N/A	N/A	N/A	N/A	R0001
	07-07	REP	N/A	N/A	N/A	N/A	N/A	N/A	R0001
	07-07A	REP	N/A	N/A	N/A	N/A	N/A	N/A	R0001
	07-09	REP	N/A	N/A	N/A	N/A	N/A	N/A	R0001
	07-10	REP	N/A	N/A	N/A	N/A	N/A	N/A	R0001

	Precinct	Party	US Cong	Sup Ct	Dist Ct	NC Sen	NC Hse	CCom	Ballot Style
	07-11	REP	N/A	N/A	N/A	N/A	N/A	N/A	R0001
	07-12	REP	N/A	N/A	N/A	N/A	N/A	N/A	R0001
	07-13	REP	N/A	N/A	N/A	N/A	N/A	N/A	R0001
	08-02	REP	N/A	N/A	N/A	N/A	N/A	N/A	R0001
	08-03	REP	N/A	N/A	N/A	N/A	N/A	N/A	R0001
	08-04	REP	N/A	N/A	N/A	N/A	N/A	N/A	R0001
	08-05	REP	N/A	N/A	N/A	N/A	N/A	N/A	R0001
	08-06	REP	N/A	N/A	N/A	N/A	N/A	N/A	R0001
	08-07	REP	N/A	N/A	N/A	N/A	N/A	N/A	R0001
	08-08	REP	N/A	N/A	N/A	N/A	N/A	N/A	R0001
	08-09	REP	N/A	N/A	N/A	N/A	N/A	N/A	R0001
	08-10	REP	N/A	N/A	N/A	N/A	N/A	N/A	R0001
	08-11	REP	N/A	N/A	N/A	N/A	N/A	N/A	R0001
	09-01	REP	13	N/A	N/A	N/A	N/A	N/A	R0002
	09-02	REP	N/A	N/A	N/A	N/A	N/A	N/A	R0001
	09-02	REP	13	N/A	N/A	N/A	N/A	N/A	R0002
	09-03	REP	13	N/A	N/A	N/A	N/A	N/A	R0002
	10-01	REP	N/A	N/A	N/A	N/A	N/A	N/A	R0001
	10-02	REP	N/A	N/A	N/A	N/A	N/A	N/A	R0001
	10-03	REP	N/A	N/A	N/A	N/A	N/A	N/A	R0001
	10-03	REP	13	N/A	N/A	N/A	N/A	N/A	R0002
	10-05	REP	N/A	N/A	N/A	N/A	N/A	N/A	R0001
	10-05	REP	13	N/A	N/A	N/A	N/A	N/A	R0002
	10-06	REP	N/A	N/A	N/A	N/A	N/A	N/A	R0001
	11-01	REP	N/A	N/A	N/A	N/A	N/A	N/A	R0001
	11-02	REP	N/A	N/A	N/A	N/A	N/A	N/A	R0001
	12-01	REP	13	N/A	N/A	N/A	N/A	N/A	R0002
	12-02	REP	N/A	N/A	N/A	N/A	N/A	N/A	R0001
	12-04	REP	13	N/A	N/A	N/A	N/A	N/A	R0002
	12-06	REP	13	N/A	N/A	N/A	N/A	N/A	R0002
	12-07	REP	13	N/A	N/A	N/A	N/A	N/A	R0002
	12-08	REP	N/A	N/A	N/A	N/A	N/A	N/A	R0001
	12-09	REP	13	N/A	N/A	N/A	N/A	N/A	R0002
	12-10	REP	13	N/A	N/A	N/A	N/A	N/A	R0002
	12-11	REP	13	N/A	N/A	N/A	N/A	N/A	R0002

	Precinct	Party	US Cong	Sup Ct	Dist Ct	NC Sen	NC Hse	CCom	Ballot Style
	13-01	REP	N/A	N/A	N/A	N/A	N/A	N/A	R0001
	13-02	REP	N/A	N/A	N/A	N/A	N/A	N/A	R0001
	13-05	REP	N/A	N/A	N/A	N/A	N/A	N/A	R0001
	13-06	REP	N/A	N/A	N/A	N/A	N/A	N/A	R0001
	13-07	REP	N/A	N/A	N/A	N/A	N/A	N/A	R0001
	13-08	REP	N/A	N/A	N/A	N/A	N/A	N/A	R0001
	13-09	REP	N/A	N/A	N/A	N/A	N/A	N/A	R0001
	13-10	REP	N/A	N/A	N/A	N/A	N/A	N/A	R0001
	13-11	REP	N/A	N/A	N/A	N/A	N/A	N/A	R0001
	14-01	REP	13	N/A	N/A	N/A	N/A	N/A	R0002
	14-02	REP	13	N/A	N/A	N/A	N/A	N/A	R0002
	15-01	REP	13	N/A	N/A	N/A	N/A	N/A	R0002
	15-02	REP	13	N/A	N/A	N/A	N/A	N/A	R0002
	15-03	REP	13	N/A	N/A	N/A	N/A	N/A	R0002
	15-04	REP	13	N/A	N/A	N/A	N/A	N/A	R0002
	16-01	REP	N/A	N/A	N/A	N/A	N/A	N/A	R0001
	16-01	REP	13	N/A	N/A	N/A	N/A	N/A	R0002
	16-02	REP	N/A	N/A	N/A	N/A	N/A	N/A	R0001
	16-03	REP	N/A	N/A	N/A	N/A	N/A	N/A	R0001
	16-04	REP	N/A	N/A	N/A	N/A	N/A	N/A	R0001
	16-05	REP	N/A	N/A	N/A	N/A	N/A	N/A	R0001
	16-06	REP	N/A	N/A	N/A	N/A	N/A	N/A	R0001
	16-07	REP	N/A	N/A	N/A	N/A	N/A	N/A	R0001
	16-09	REP	N/A	N/A	N/A	N/A	N/A	N/A	R0001
	16-09	REP	13	N/A	N/A	N/A	N/A	N/A	R0002
	16-10	REP	N/A	N/A	N/A	N/A	N/A	N/A	R0001
	16-11	REP	N/A	N/A	N/A	N/A	N/A	N/A	R0001
	17-01	REP	N/A	N/A	N/A	N/A	N/A	N/A	R0001
	17-02	REP	N/A	N/A	N/A	N/A	N/A	N/A	R0001
	17-03	REP	N/A	N/A	N/A	N/A	N/A	N/A	R0001
	17-05	REP	N/A	N/A	N/A	N/A	N/A	N/A	R0001
	17-06	REP	N/A	N/A	N/A	N/A	N/A	N/A	R0001
	17-07	REP	N/A	N/A	N/A	N/A	N/A	N/A	R0001
	17-09	REP	N/A	N/A	N/A	N/A	N/A	N/A	R0001
	17-10	REP	N/A	N/A	N/A	N/A	N/A	N/A	R0001

	Precinct	Party	US Cong	Sup Ct	Dist Ct	NC Sen	NC Hse	CCom	Ballot Style
	17-11	REP	N/A	N/A	N/A	N/A	N/A	N/A	R0001
	17-12	REP	N/A	N/A	N/A	N/A	N/A	N/A	R0001
	17-13	REP	N/A	N/A	N/A	N/A	N/A	N/A	R0001
	17-14	REP	N/A	N/A	N/A	N/A	N/A	N/A	R0001
	17-15	REP	N/A	N/A	N/A	N/A	N/A	N/A	R0001
	18-01	REP	N/A	N/A	N/A	N/A	N/A	N/A	R0001
	18-02	REP	13	N/A	N/A	N/A	N/A	N/A	R0002
	18-03	REP	N/A	N/A	N/A	N/A	N/A	N/A	R0001
	18-04	REP	N/A	N/A	N/A	N/A	N/A	N/A	R0001
	18-05	REP	N/A	N/A	N/A	N/A	N/A	N/A	R0001
	18-06	REP	N/A	N/A	N/A	N/A	N/A	N/A	R0001
	18-07	REP	13	N/A	N/A	N/A	N/A	N/A	R0002
	18-08	REP	N/A	N/A	N/A	N/A	N/A	N/A	R0001
	19-03	REP	13	N/A	N/A	N/A	N/A	N/A	R0002
	19-05	REP	13	N/A	N/A	N/A	N/A	N/A	R0002
	19-07	REP	13	N/A	N/A	N/A	N/A	N/A	R0002
	19-09	REP	13	N/A	N/A	N/A	N/A	N/A	R0002
	19-11	REP	N/A	N/A	N/A	N/A	N/A	N/A	R0001
	19-13	REP	N/A	N/A	N/A	N/A	N/A	N/A	R0001
	19-14	REP	N/A	N/A	N/A	N/A	N/A	N/A	R0001
	19-15	REP	N/A	N/A	N/A	N/A	N/A	N/A	R0001
	19-16	REP	N/A	N/A	N/A	N/A	N/A	N/A	R0001
	19-17	REP	N/A	N/A	N/A	N/A	N/A	N/A	R0001
	19-18	REP	N/A	N/A	N/A	N/A	N/A	N/A	R0001
	19-19	REP	N/A	N/A	N/A	N/A	N/A	N/A	R0001
	19-20	REP	N/A	N/A	N/A	N/A	N/A	N/A	R0001
	19-21	REP	N/A	N/A	N/A	N/A	N/A	N/A	R0001
	19-22	REP	N/A	N/A	N/A	N/A	N/A	N/A	R0001
	19-23	REP	N/A	N/A	N/A	N/A	N/A	N/A	R0001
	20-01	REP	N/A	N/A	N/A	N/A	N/A	N/A	R0001
	20-03	REP	N/A	N/A	N/A	N/A	N/A	N/A	R0001
	20-04	REP	N/A	N/A	N/A	N/A	N/A	N/A	R0001
	20-05	REP	N/A	N/A	N/A	N/A	N/A	N/A	R0001
	20-06A	REP	N/A	N/A	N/A	N/A	N/A	N/A	R0001
	20-06B	REP	N/A	N/A	N/A	N/A	N/A	N/A	R0001

Precinct	Party	US Cong	Sup Ct	Dist Ct	NC Sen	NC Hse	CCom	Ballot Style
20-08	REP	N/A	N/A	N/A	N/A	N/A	N/A	R0001
20-09	REP	N/A	N/A	N/A	N/A	N/A	N/A	R0001
20-10	REP	N/A	N/A	N/A	N/A	N/A	N/A	R0001
20-11	REP	N/A	N/A	N/A	N/A	N/A	N/A	R0001
20-12	REP	N/A	N/A	N/A	N/A	N/A	N/A	R0001
20-14	REP	N/A	N/A	N/A	N/A	N/A	N/A	R0001
20-15	REP	N/A	N/A	N/A	N/A	N/A	N/A	R0001
20-16	REP	N/A	N/A	N/A	N/A	N/A	N/A	R0001
20-17	REP	N/A	N/A	N/A	N/A	N/A	N/A	R0001

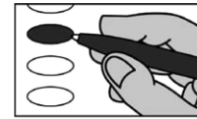
Sample Ballot - Republican Party Second Primary
Wake County, North Carolina
May 14, 2024

R0001



BALLOT MARKING INSTRUCTIONS

- A. With the marking device provided or a black ball point pen, completely fill in the oval to the left of each candidate or selection of your choice as shown.
- B. If you tear, deface or wrongly mark this ballot, return it to request a replacement.



PARTISAN NOMINATIONS

NC Lieutenant Governor
(You may vote for ONE)

- Jim O'Neill
- Hal Weatherman

NC Auditor
(You may vote for ONE)

- Dave Boliek
- Jack Clark

End of Ballot

SAMPLE BALLOT SAMPLE BALLOT SAMPLE BALLOT SAMPLE BALLOT