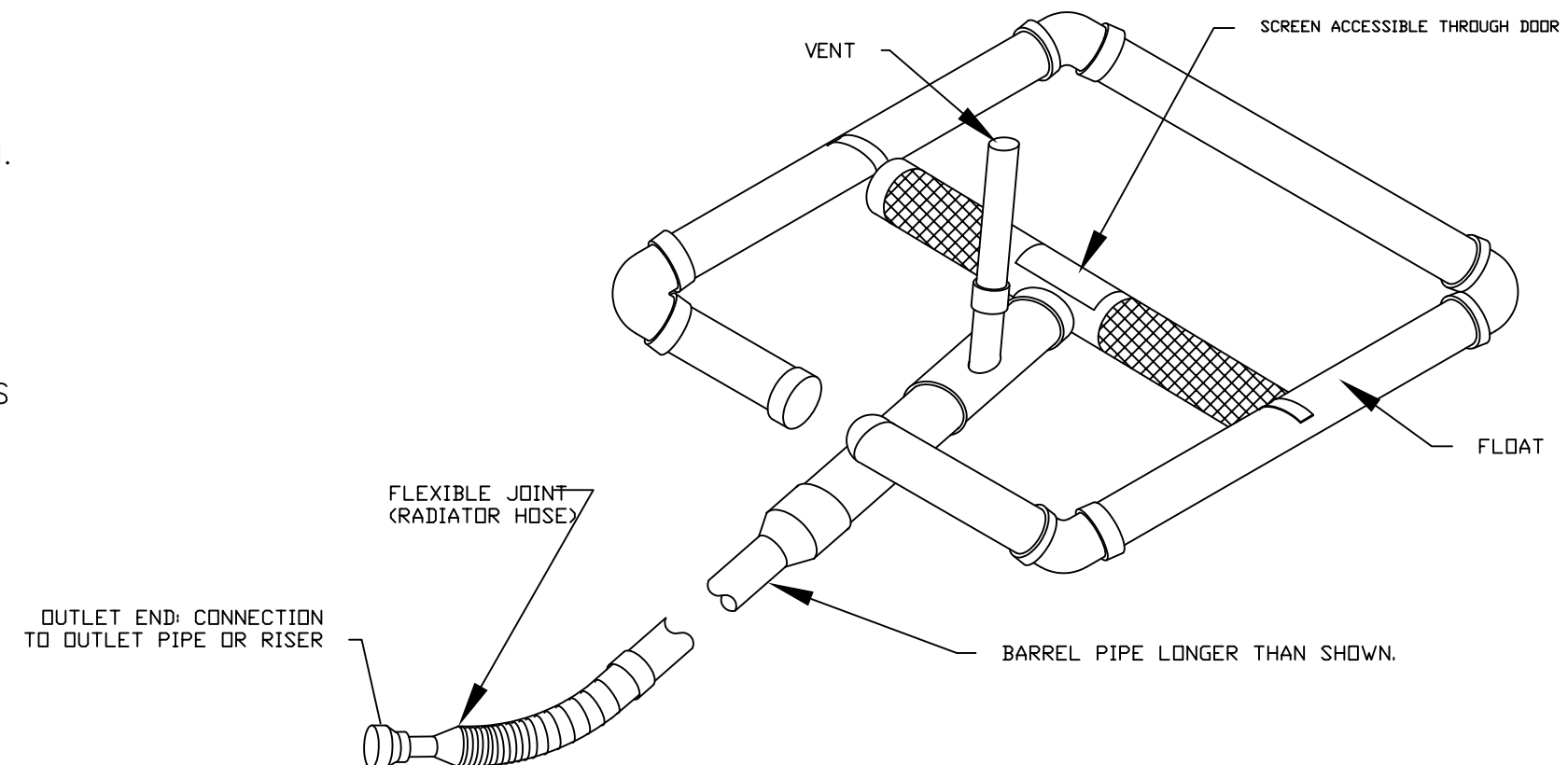


MAINTENANCE NOTES:

1. INSTALL A PAD FOR SKIMMER TO REST ON
STONE OR WOOD PALLETS OR H-BEAM SECTION.
2. INSTALL SKIMMER AND PAD AWAY FROM
BAFFLES.
3. ATTACH ROPE TO SKIMMER FOR MAINTENANCE
4. INSPECT THE BASIN ON A REGULAR BASIS AND
AFTER EVERY SIGNIFICANT RAINFALL EVENT (1
INCH OR GREATER).
5. CHECK THE SKIMMER TO MAKE SURE THAT IT IS
NOT CLOGGED WITH SEDIMENT.
6. REMOVE SEDIMENT THAT MAY ACCUMULATE ON
THE STONE PAD UNDERNEATH THE SKIMMER
DEVICE.



STANDARD SKIMMER DETAIL

EFFECTIVE: 01/31/08