

Wake County

Animal Care, Control and Adoption

March 2014 Monthly Report



Definitions

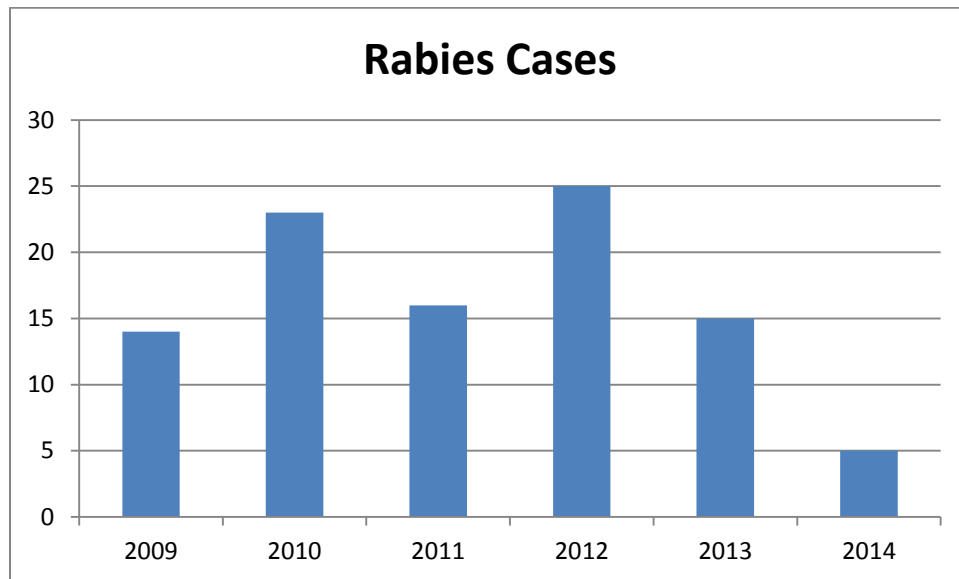
Intake: Animals admitted to the Animal Center. These include animals surrendered by the general public, picked up by Animal Control and animals born at the Center.

Adoption: Includes animals adopted to new homes and transferred to qualifying rescue groups.

Reclaim: Animals reclaimed by their owners after being found as strays or after completing quarantine period.

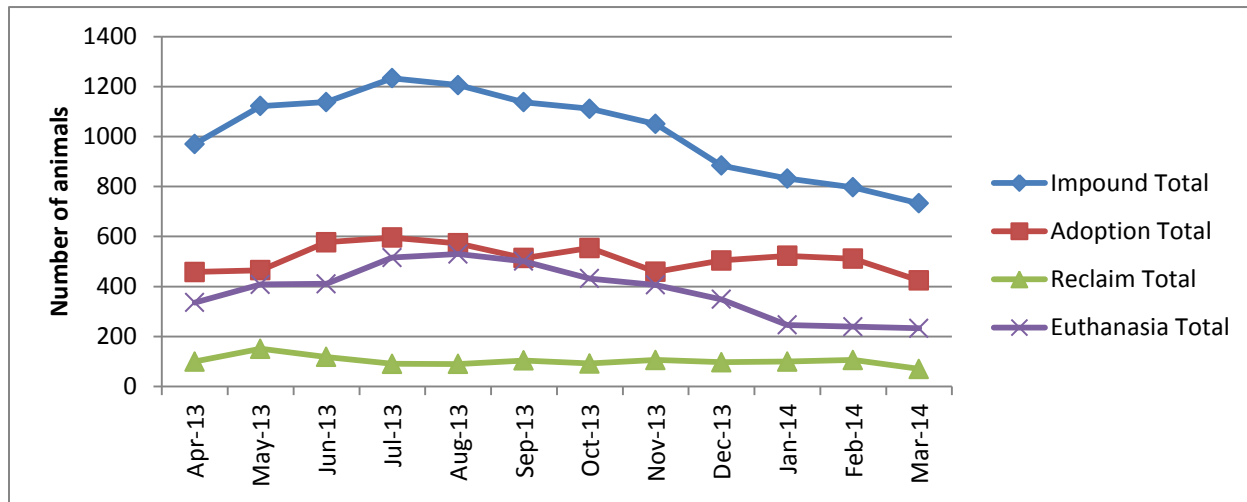
Euthanasia: Animals humanely euthanized at the Center. This includes animals that reside at the Animal Center and animals surrendered by their owner for euthanasia for medical or behavioral reasons.

Rabies: Positive confirmed laboratory cases



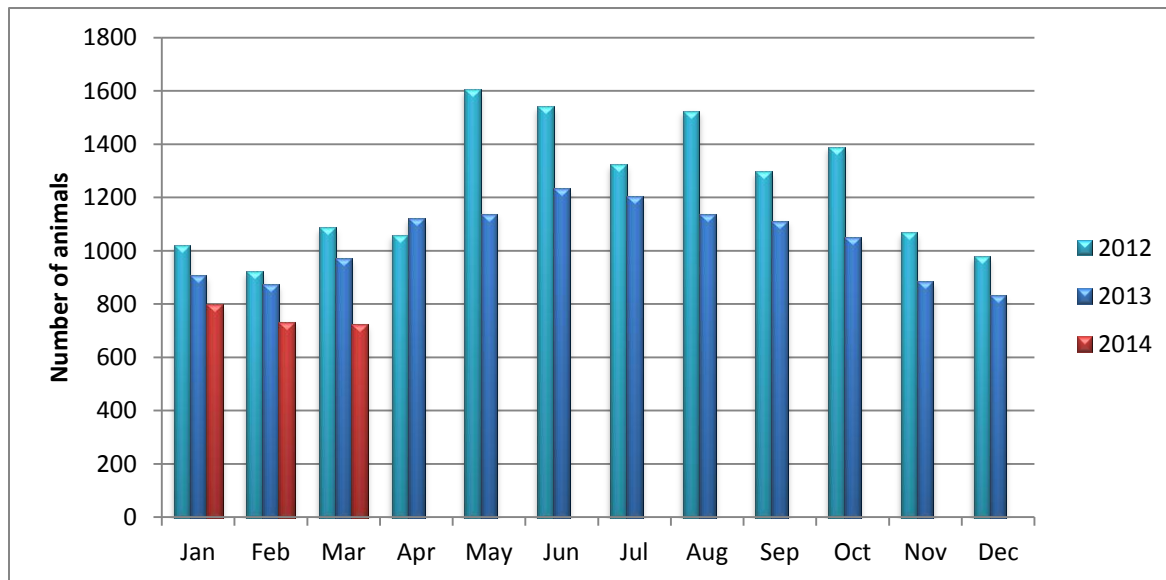
n= 1; 1 case in the month of March 2014; year to date cases= 5. (Note: The NC State Laboratory of Public Health October 2013 rabies cases in Wake County was revised from 2 to 1.)

Animal Center Statistical Summary



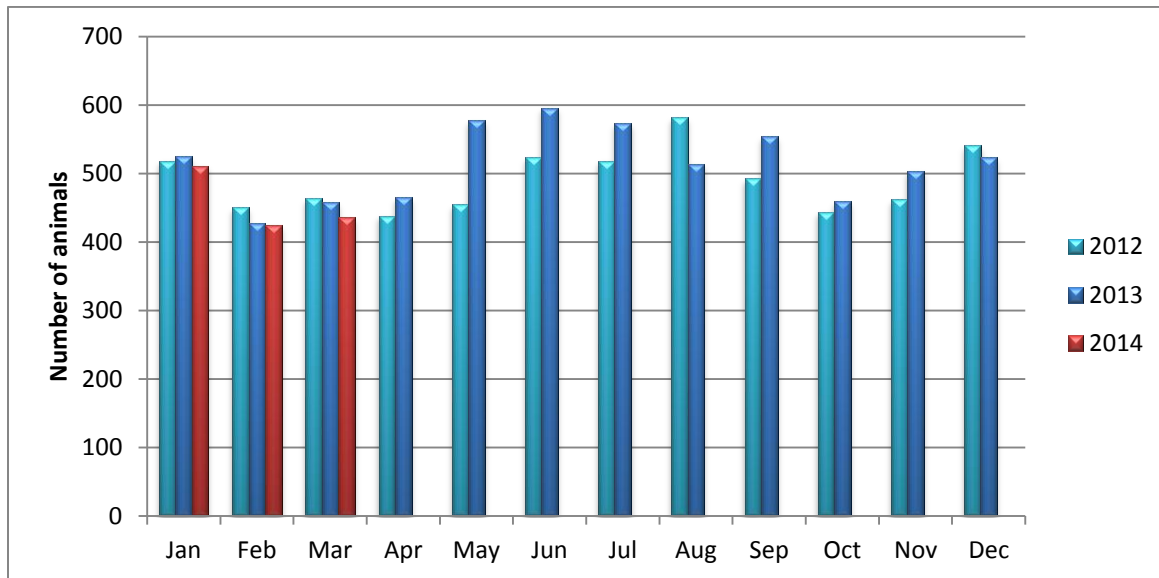
Ebb and Flow of animal intake: As depicted above, animal intake increases significantly in the warm months and drops in the cold months. This is typically associated with an increase in puppy and kitten litters in warm months. Adoptions do not generally increase along with intake, and due to this, euthanasia rates typically coincide with intake increases.

Animal Center Intake Monthly Comparison



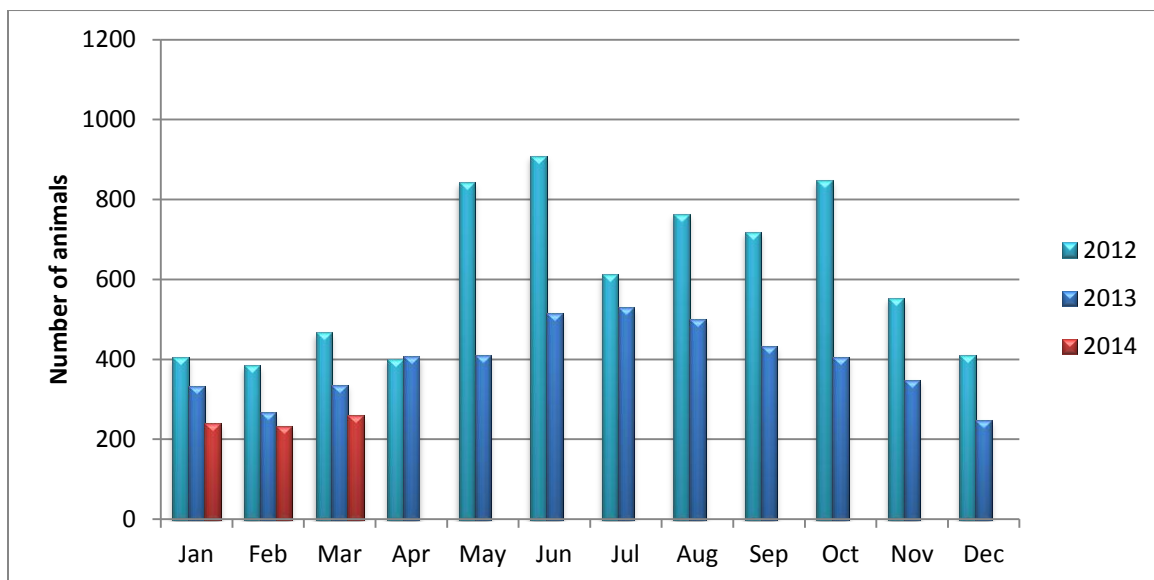
N = 723; Intake decreased 25.5% from March 2013.

Adoption Monthly Comparison



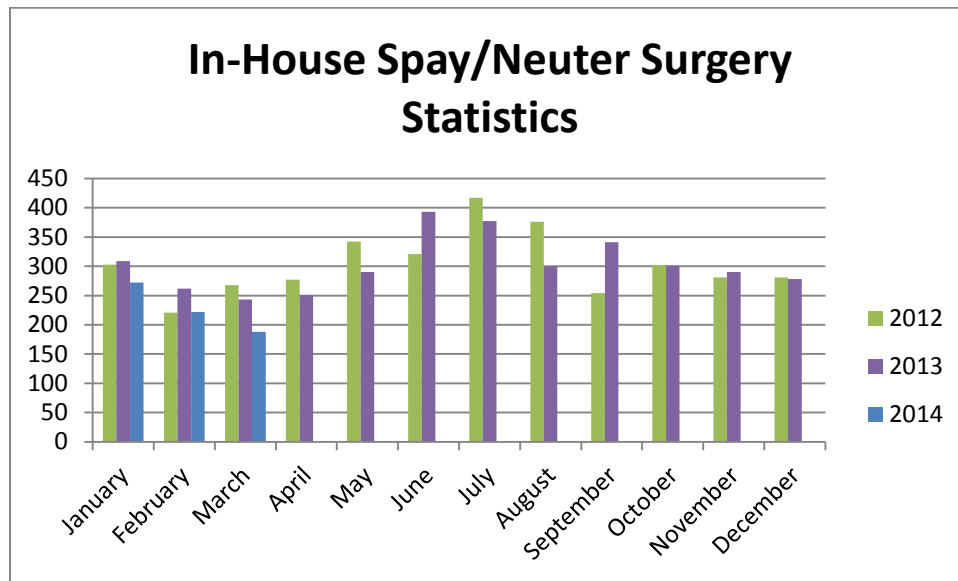
n=436; data represents typical adoptions to new families; number of adoptions decreased 4.8% as compared to March 2013.

Euthanasia monthly comparison



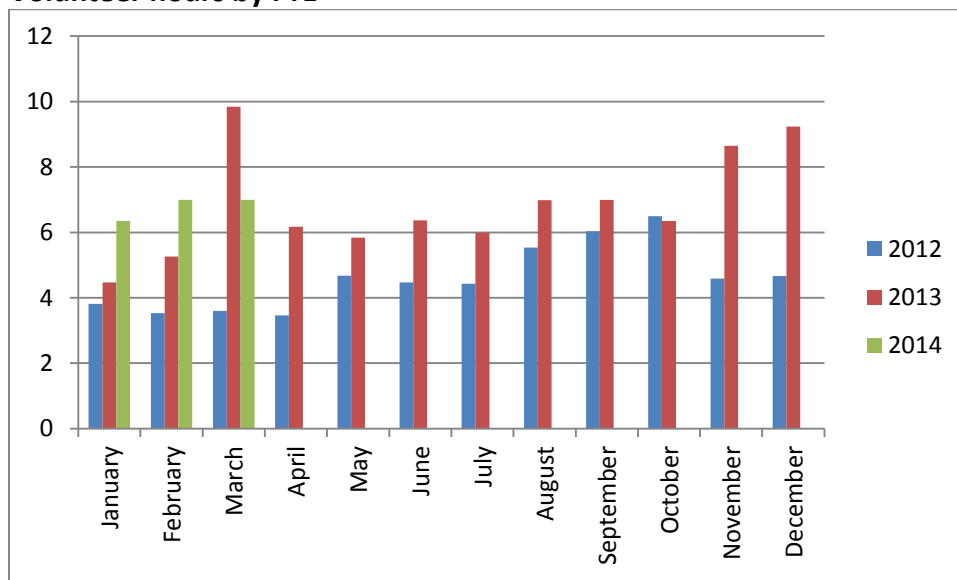
n=260; The number of euthanasia decreased 22.6% from March 2013.

Spay/Neuter Surgeries monthly comparison



n=188; spay/neuter surgeries; One Hundred Eighty-eight spay or neuter surgeries were performed during the month of March 2014 by the Center's in-house veterinary program

Volunteer hours by FTE



n= 6.99 FTEs; Volunteers logged enough hours during the month of March 2014 equal 6.99 extra full time employees. This includes dog walking, socialization, off-site events and work promoting animals in the community, just to name a few.

Wake County Animal Center Statistical Report

Date Range: July 1, 2013 - March 31, 2014

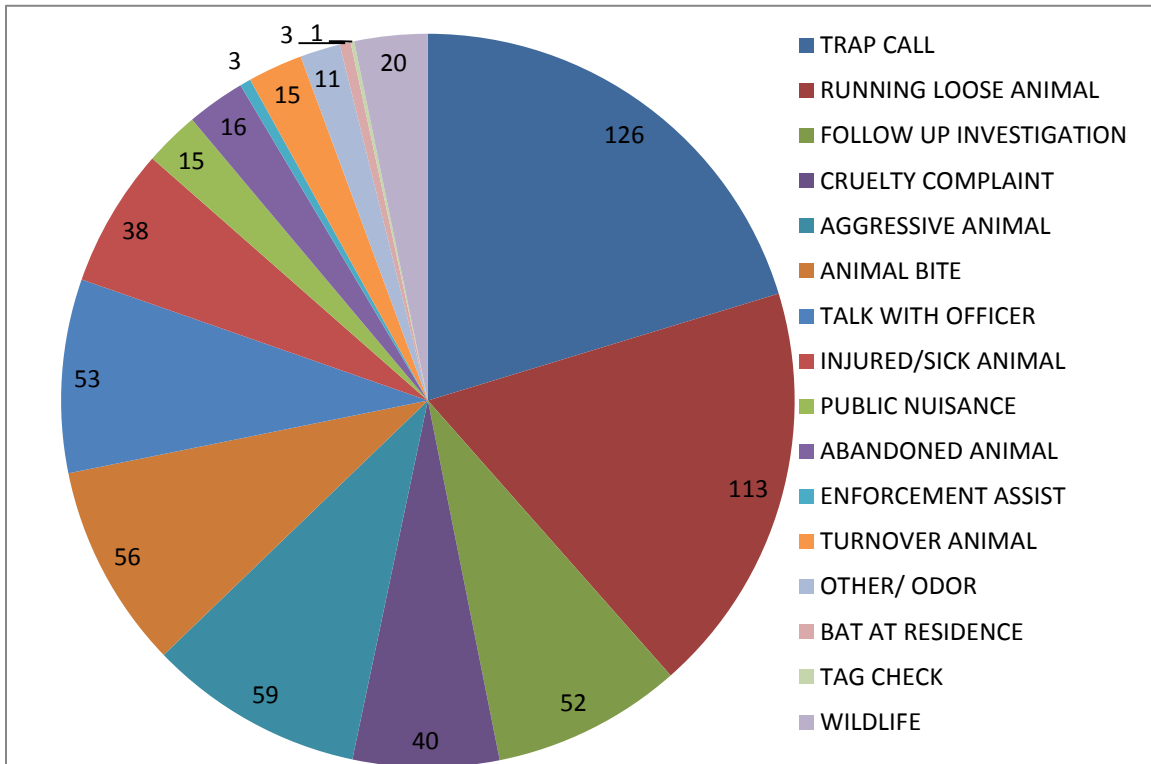
Date Prepared: 4/15/2014

	YTD FY11	%	YTD FY12	%	YTD FY13	%	YTD FY14	%	MTD	%
Intake Dog	5710		5694		5180		4266		445	
Intake Cat	5377		5122		4672		3838		244	
Intake Other	433		507		461		351		34	
Intake Total	11520		11323		10313		8455		723	
Adoption Dog	2292	40%	2374	42%	2079	40.1%	1843	43.2%	207	46.5%
Adoption Cat	1252	23%	1370	27%	1293	27.7%	1284	33.5%	78	32.0%
Adoption Other	95	22%	157	31%	111	24.1%	118	33.6%	17	50.0%
Adoption Total	3686	32%	3915	35%	3523	34.2%	3305	39.1%	305	42.2%
Transfer Dog	788	14%	641	11%	629	12.1%	760	17.8%	82	18.4%
Transfer Cat	534	10%	360	7%	218	4.7%	460	12.0%	48	19.7%
Transfer Other	83	19%	46	9%	101	21.9%	33	9.4%	4	11.8%
Transfer Total	1405	12%	1047	9%	948	9.2%	1253	14.8%	134	18.5%
Reclaim Dog	900	16%	929	16%	851	16.4%	757	17.7%	89	20.0%
Reclaim Cat	117	2%	131	3%	91	1.9%	97	2.5%	9	3.7%
Reclaim Other	7	2%	6	1%	24	5.2%	9	2.6%	0	0.0%
Reclaim Total	1024	9%	1066	9%	966	9.4%	863	10.2%	98	13.6%
Euth Dog	1460	26%	1923	34%	1519	29.3%	930	21.8%	101	22.7%
Euth Cat	3382	63%	3479	68%	3127	66.9%	2098	54.7%	140	57.4%
Euth Other	194	45%	233	46%	194	42.1%	170	48.4%	18	52.9%
Euth Total	5038	44%	5638	50%	4845	47.0%	3201	37.9%	260	36.0%

	Total	%
Change in intake from FY13 to FY14	-1858	-16%
Change in adoptions from FY13 to FY14	-218	-6%
Change in transfers from FY13 to FY14	305	29%
Change in euthanasia from FY13 to FY14	-1644	-29%
Change in total cat live releases	239	14.9%
Change in total dog live releases	-199	-5.6%

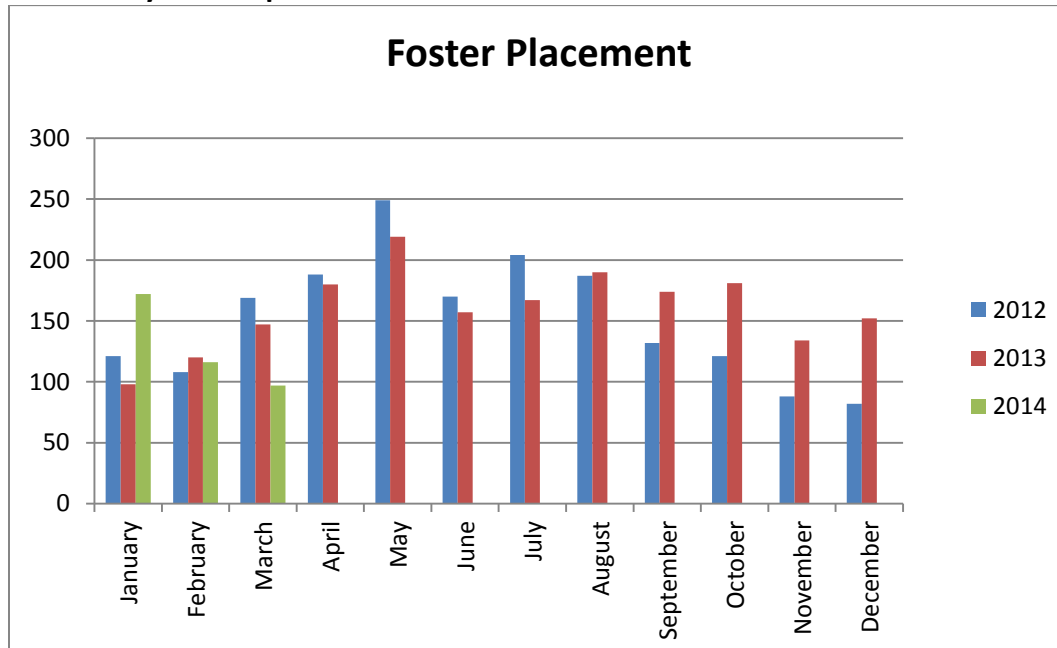
Note: a decrease in total numbers or percentage will show a (-) symbol and be in red. Increases will be in blue and will not show a (+) symbol. Note: The first three columns show three different fiscal years, using the date range indicated on the top left corner of the report. Each month, we will compare the same date range across the current and past three fiscal years for equal comparison.

Animal Control Field Data



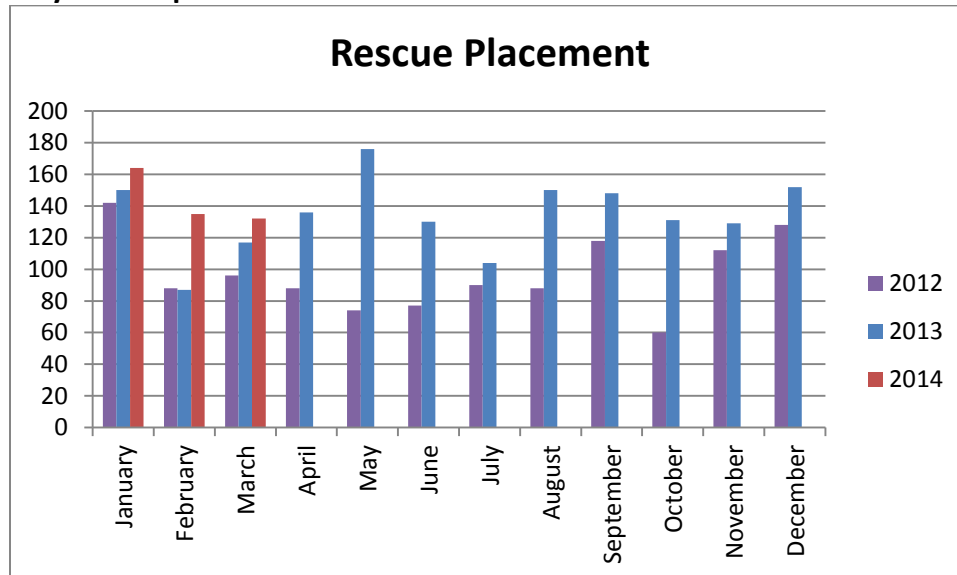
n=621; Wake County Animal Control responded to 621 requests for service in March 2014. Requests for animal traps and complaints cruelty complaints were the majority of calls this month.

Year over year comparison: Foster Placement



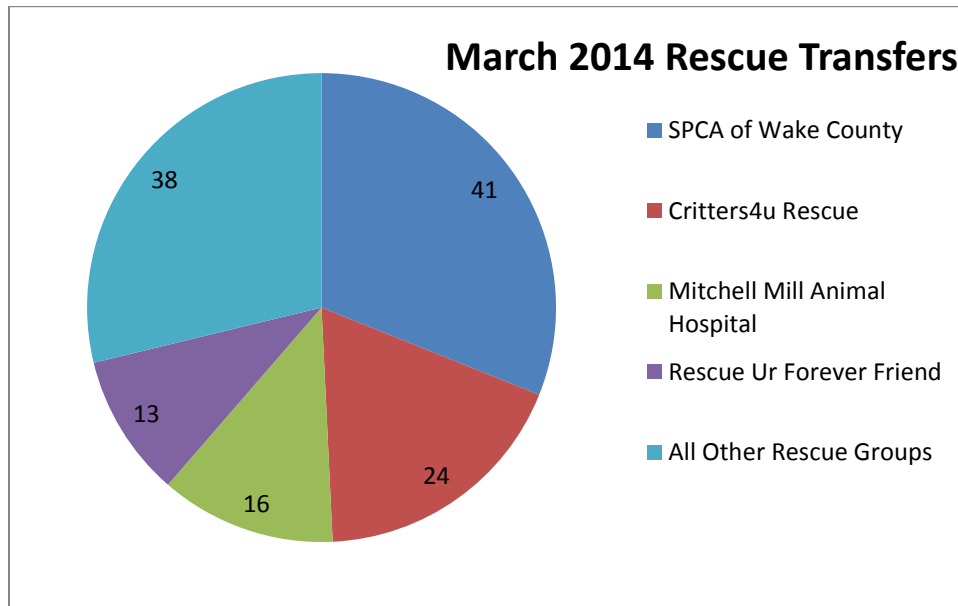
n=97; During the month of March 2014, One Hundred Sixteen animals were placed into foster care. Foster placement decreased 34% from March 2013.

Year over year comparison: Rescue Placement



n=132; Rescue placement is 12.8% higher than March 2013. During the month of March 2014, One Hundred thirty-two animals were placed into the care of partnering rescue groups and adoption centers.

Distribution of Rescue Placement



n=132; WCAC transferred 132 animals to our rescue partners during the month of March 2014.

Top Animal Rescue Transfers

October 2013	TOTAL
SPCA of Wake County	41
Critters4u Rescue	24
Mitchell Mill Animal Hospital	16
Rescue Ur Forever Friend	13