

# Animal Care, Control and Adoption

[illegible]

## Definitions

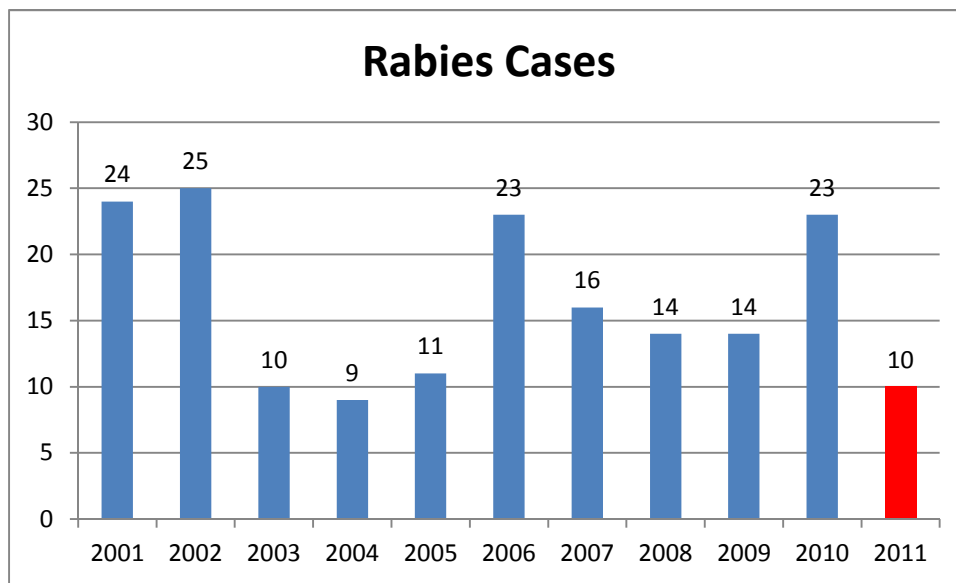
*Intake:* Animals admitted to the Animal Center. These include animals surrendered by the general public, picked up by Animal Control and animals born at the Center.

*Adoption:* Includes animals adopted to new homes and transferred to qualifying rescue groups.

*Reclaim:* Animals reclaimed by their owners after being found as strays or after completing quarantine period.

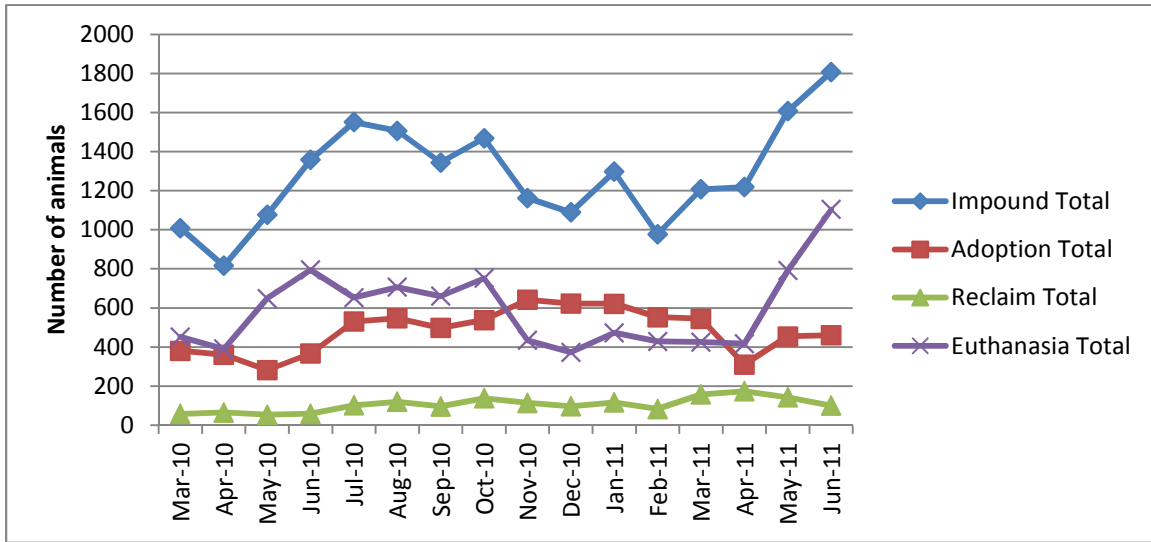
*Euthanasia:* Animals humanely euthanized at the Center. This includes animals that reside at the Animal Center and animals surrendered by their owner for euthanasia for medical or behavioral reasons.

## Rabies: Positive confirmed laboratory cases



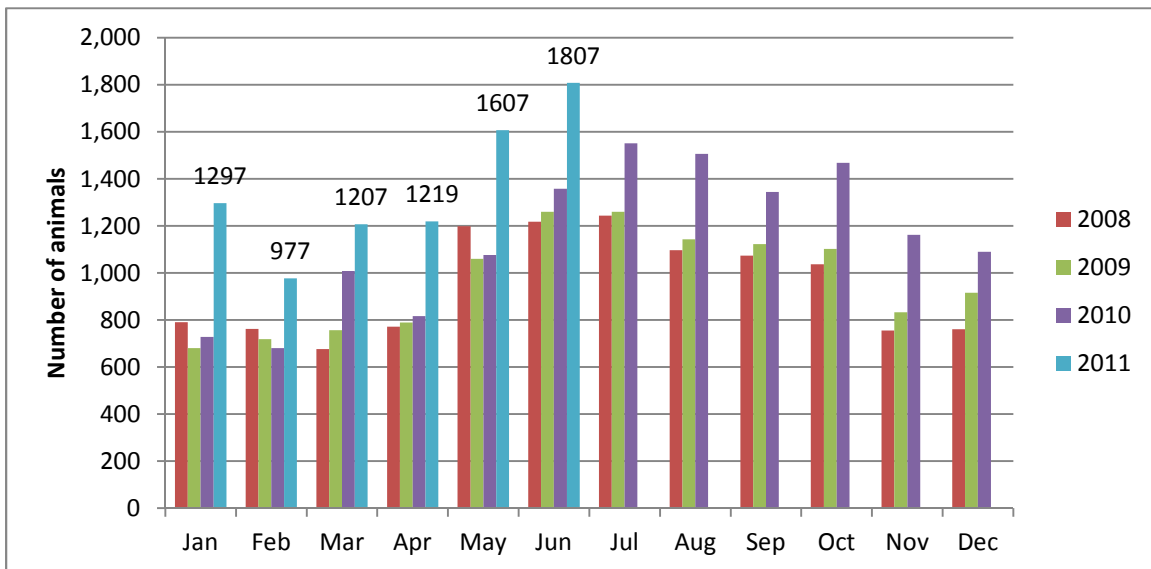
n=2 in the month of June 2011; year to date cases=10.

## Animal Center Statistical Summary



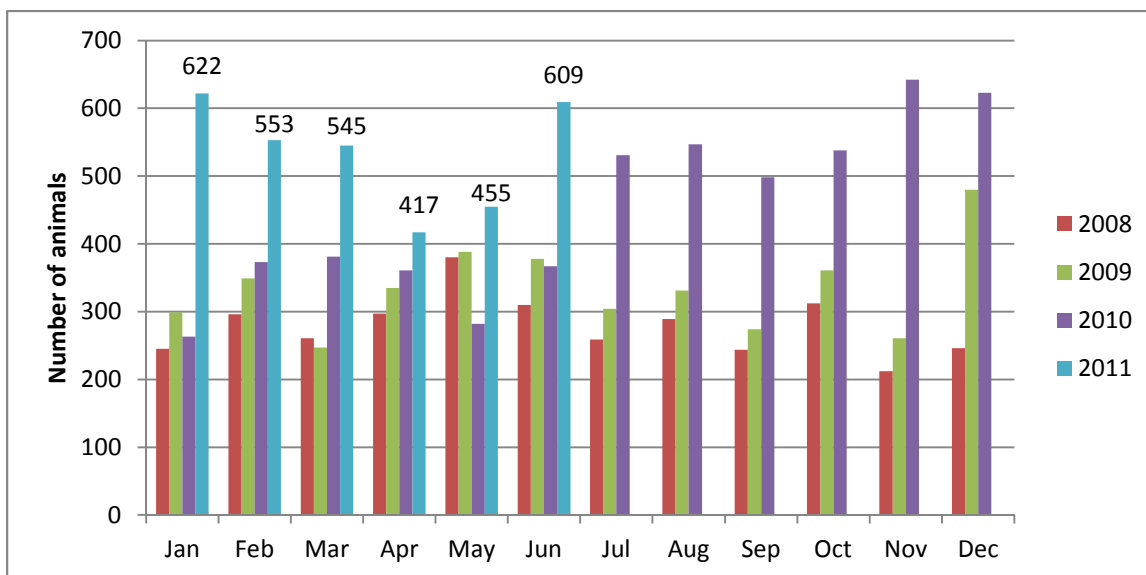
**Ebb and Flow of animal intake:** As depicted above, animal intake increases significantly in the warm months and drops in the cold months. This is typically associated with an increase in puppy and kitten litters in warm months. Adoptions do not normally increase to match the increase in intake so euthanasia rates can increase with intake.

## Animal Center Intake monthly comparison



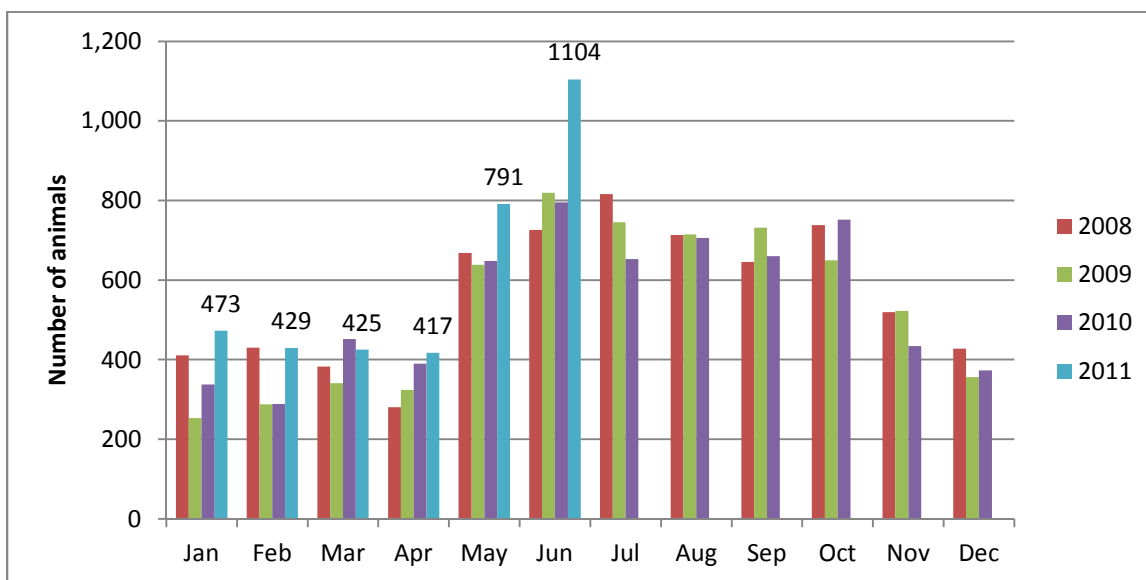
*n=1,807; Intake is 33% higher than June 2010. June 2011 represents the largest number of intake animals received in a single month.*

## Adoption/Transfer Monthly Comparison



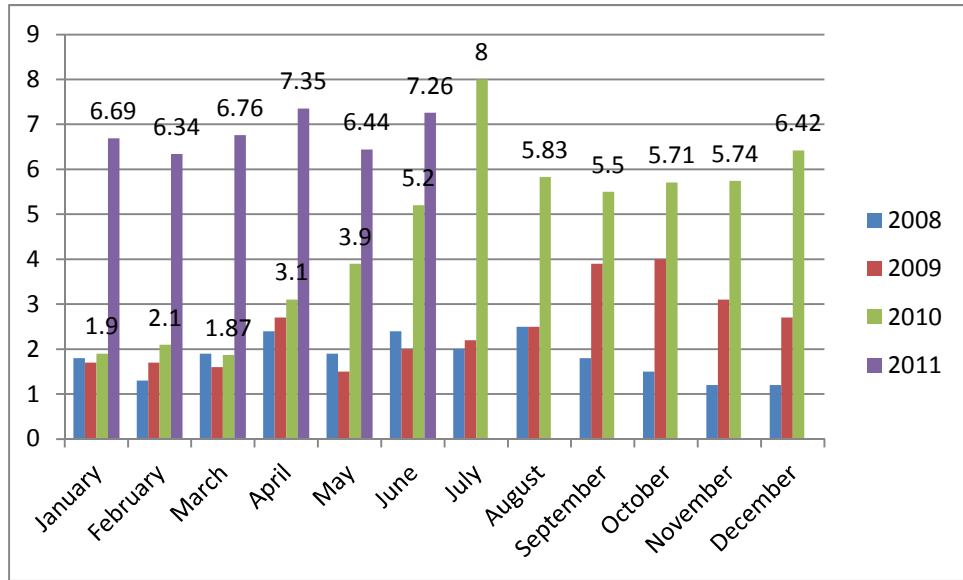
*n=609; data represents a combination of typical adoptions to new families and transfers to partner rescue groups; 65.9% increase in adoptions over June last year.*

## Euthanasia monthly comparison



*n=1,104; the euthanasia numbers are 38% higher than this month last year.*

## Volunteer hours by FTE



*n=7.26 FTEs; Volunteers logged enough hours this month to equal 7.26 extra full time employees. This includes dog walking, socialization, off-site events and work promoting animals in the community, just to name a few.*

# Wake County Animal Center Statistical Report

**Date Range:** July 1 - June 30

**Date Prepared:**

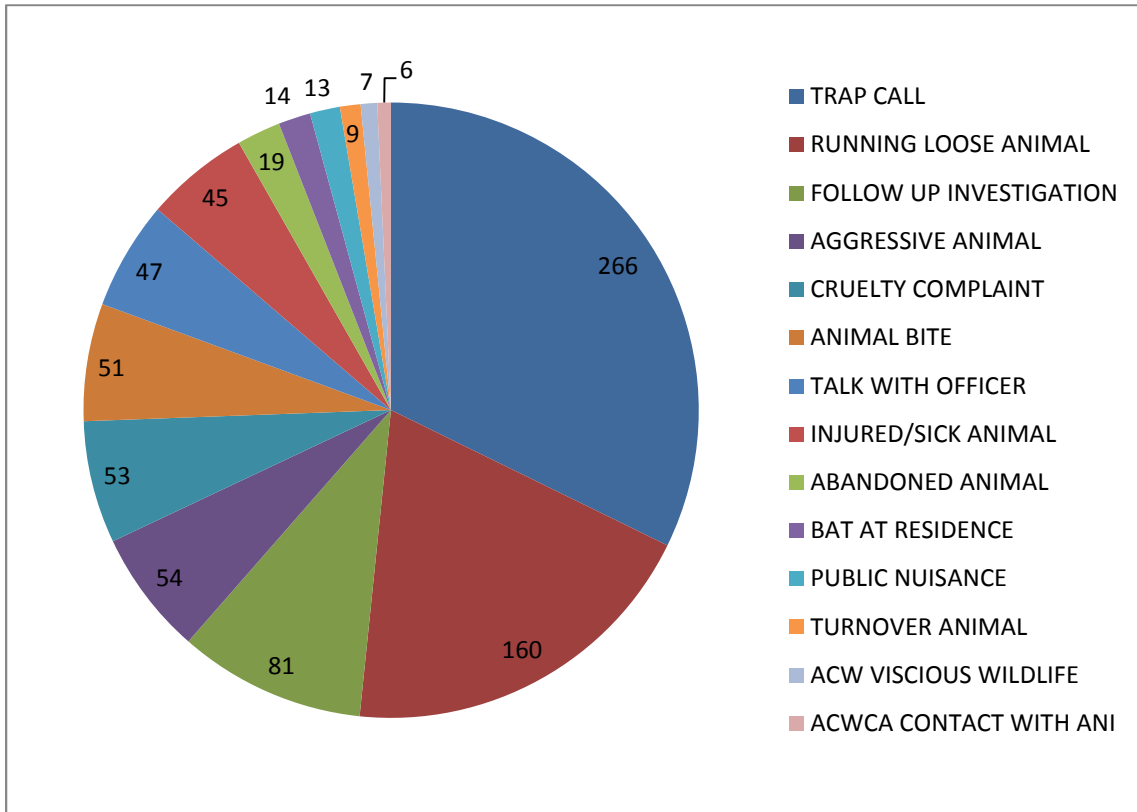
**7/1/2011**

	YTD FY09	Percent	YTD FY10	Percent	YTD FY11	Percent	MTD	Percent
Intake Dog	5323		5418		7679		650	
Intake Cat	5474		6174		7766		1013	
Intake Other	407		308		717		144	
<b>Intake Total</b>	<b>11204</b>		<b>11900</b>		<b>16162</b>		<b>1807</b>	
Adoption Dog	1924	36%	2004	37%	2942	38.31%	232	35.69%
Adoption Cat	690	13%	896	15%	1612	20.76%	217	21.42%
Adoption Other	72	18%	126	41%	137	19.11%	12	8.33%
<b>Adoption Total</b>	<b>2686</b>	<b>24%</b>	<b>3026</b>	<b>25%</b>	<b>4691</b>	<b>29.02%</b>	<b>461</b>	<b>25.51%</b>
Transfer Dog	529	10%	702	13%	985	12.83%	68	10.46%
Transfer Cat	175	3%	254	4%	682	8.78%	54	5.33%
Transfer Other	151	37%	47	15%	145	20.22%	26	18.06%
<b>Transfer Total</b>	<b>855</b>	<b>8%</b>	<b>1003</b>	<b>8%</b>	<b>1812</b>	<b>11.21%</b>	<b>148</b>	<b>8.19%</b>
Reclaim Dog	673	13%	649	12%	1271	16.55%	94	14.46%
Reclaim Cat	85	2%	88	1%	156	2.01%	6	0.59%
Reclaim Other	12	3%	7	2%	16	2.23%	0	0.00%
<b>Reclaim Total</b>	<b>770</b>	<b>7%</b>	<b>744</b>	<b>6%</b>	<b>1443</b>	<b>8.93%</b>	<b>100</b>	<b>5.53%</b>
Euth Dog	2020	38%	1830	34%	2147	27.96%	245	37.69%
Euth Cat	4382	80%	4733	77%	4830	62.19%	768	75.81%
Euth Other	144	35%	77	25%	322	44.91%	91	63.19%
<b>Euth Total</b>	<b>6546</b>	<b>58%</b>	<b>6640</b>	<b>56%</b>	<b>7299</b>	<b>45.16%</b>	<b>1104</b>	<b>61.10%</b>

	Total #	Percentage
Change in intake from FY10 to FY11	4262	36%
Change in adoptions from FY10 to FY11	1665	55%
Change in transfers from FY10 to FY11	809	81%
Change in euthanasia from FY10 to FY11	659	10%
Change in total cat live releases	1212	98%
Change in cat live release percentage		11%
Change in total dog live releases	1843	55%
Change in dog live release percentage		6%

NOTE: A decrease in total numbers or percentage will show a (-) symbol and be in red. Increases will be in blue and will not show a (+) symbol. NOTE: The first three columns show three different fiscal years, using the date range indicated on the top left corner of the report. Each month, we will compare the same date range across the current and past two fiscal years for equal comparison.

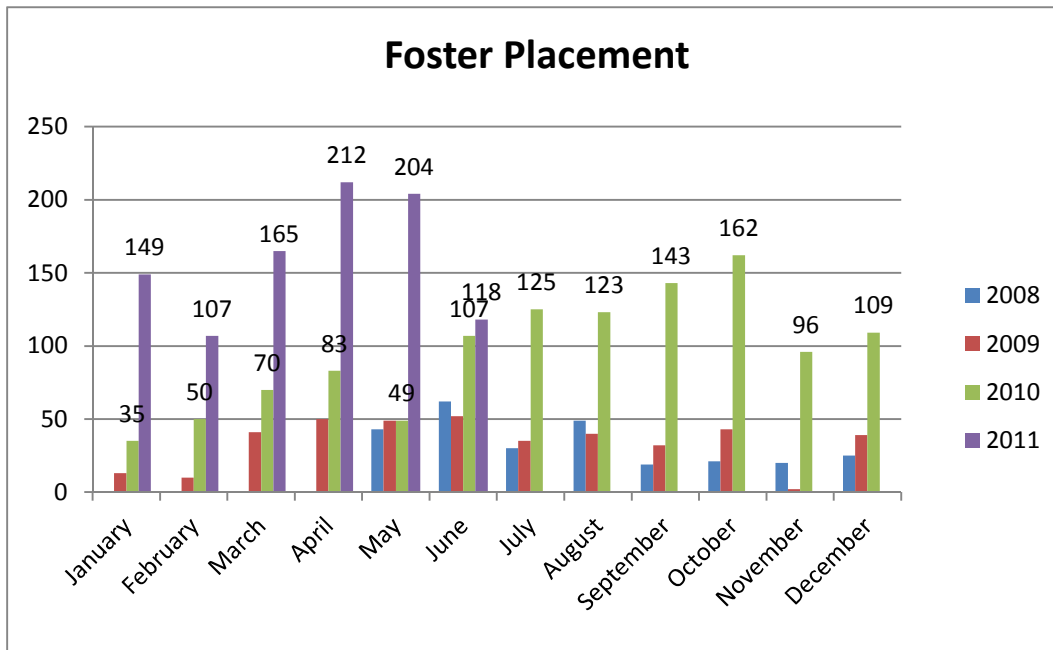
## Animal Control Field Data



n=836; Wake County Animal Control responded to 836 requests for service in June 2011. Complaints for stray or loose animals continues to contribute to about half of all calls.

During the month of June, one hundred eighteen (118) animals were placed into foster care.

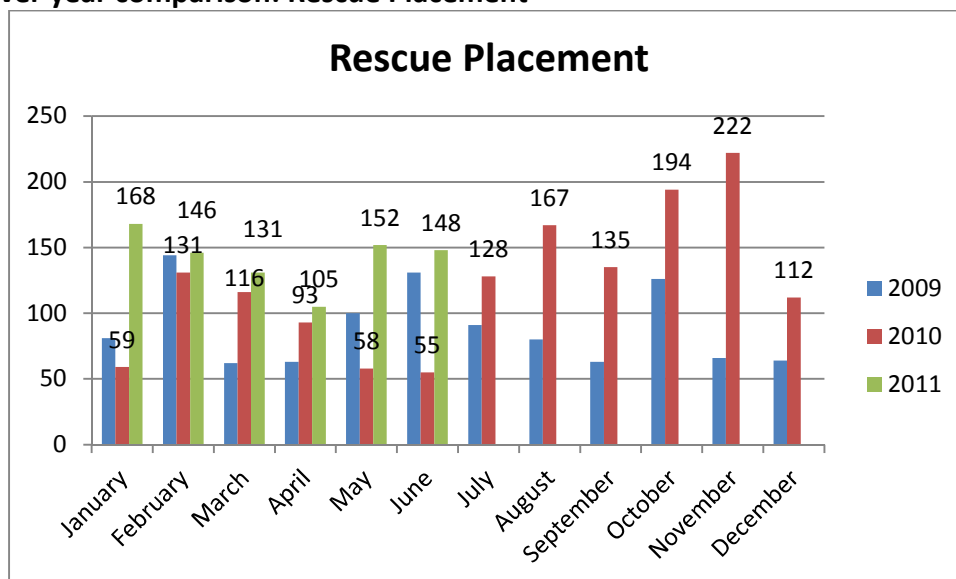
#### Year over year comparison: Foster Placement



*n=118*

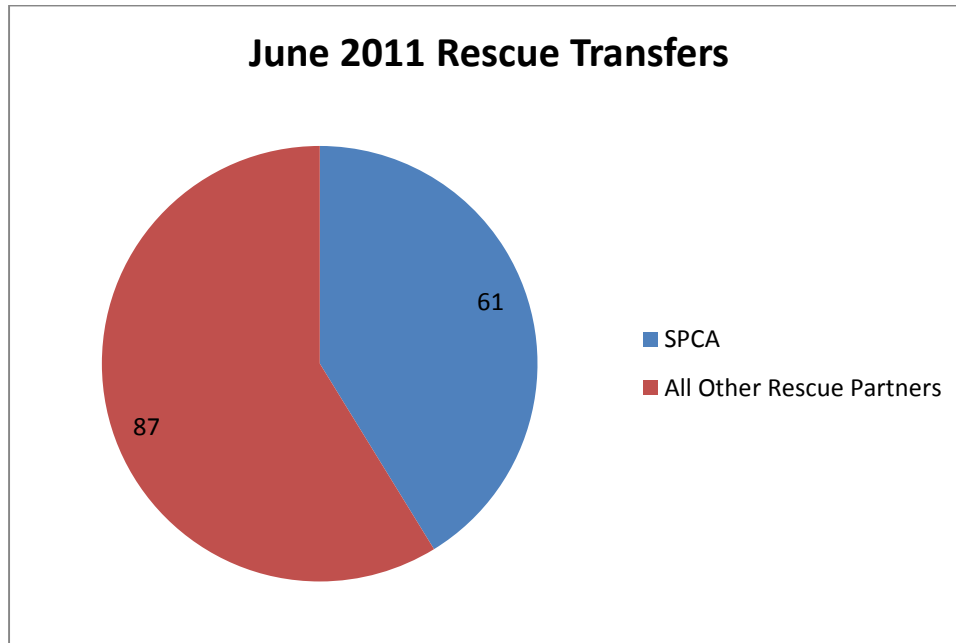
During the month of June, one hundred forty-eight (148) animals were placed into the care of partnering rescue groups and adoption centers.

#### Year over year comparison: Rescue Placement



*n=148; Rescue placement is 169% higher than this month last year.*

## Distribution of Rescue Placement



*N=148; WCAC transferred 61 canines and felines to the SPCA of Wake County in the month of June.*

## Top Canine and Feline Transfers

June 2011	Canine
SPCA of Wake County	18
All Breed Animal Rescue of the Carolinas	6
Sound Pet Animal Rescue and Referral	4
Faulkner Animal Rescue and Recovery	13
Hav-A-Hart Pet Rescue	3
Saving Grace Animals for Adoption	8
Paw Prints Animal Rescue	2

June 2011	Feline
SPCA of Wake County	43
Hav-A-Hart Pet Rescue	1
Paw Prints Animal Rescue	3