

Wake County

# Animal Care, Control and Adoption

December 2014 Monthly Report



## Definitions

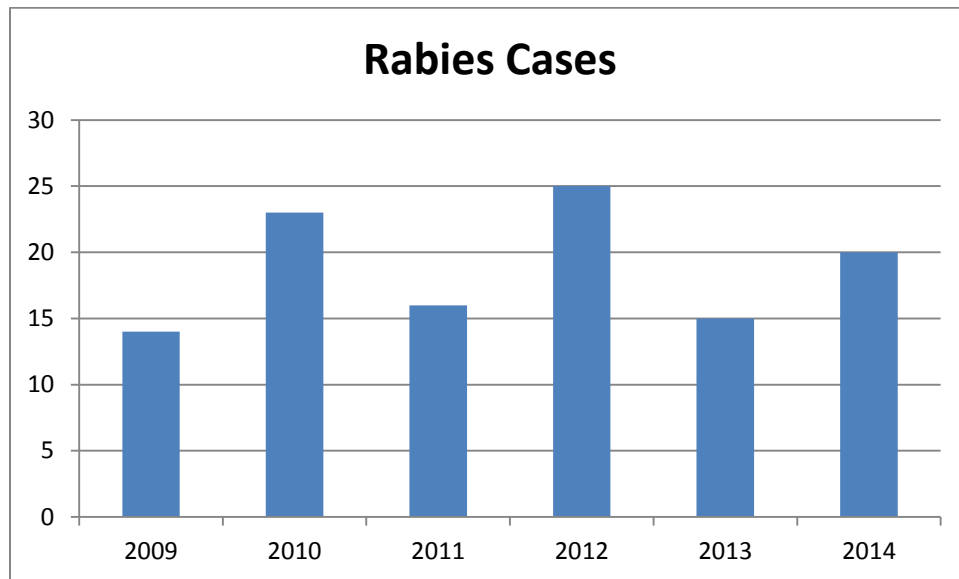
*Intake:* Animals admitted to the Animal Center. These include animals surrendered by the general public, picked up by Animal Control and animals born at the Center.

*Adoption:* Includes animals adopted to new homes and transferred to qualifying rescue groups.

*Reclaim:* Animals reclaimed by their owners after being found as strays or after completing quarantine period.

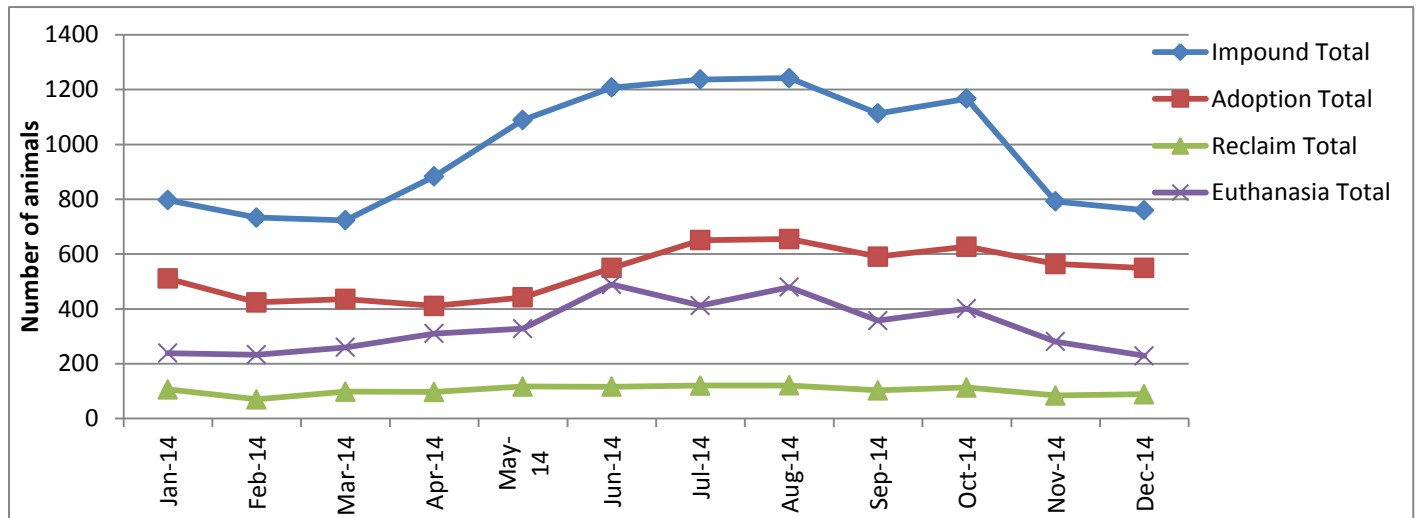
*Euthanasia:* Animals humanely euthanized at the Center. This includes animals that reside at the Animal Center and animals surrendered by their owner for euthanasia for medical or behavioral reasons.

## Rabies: Positive confirmed laboratory cases



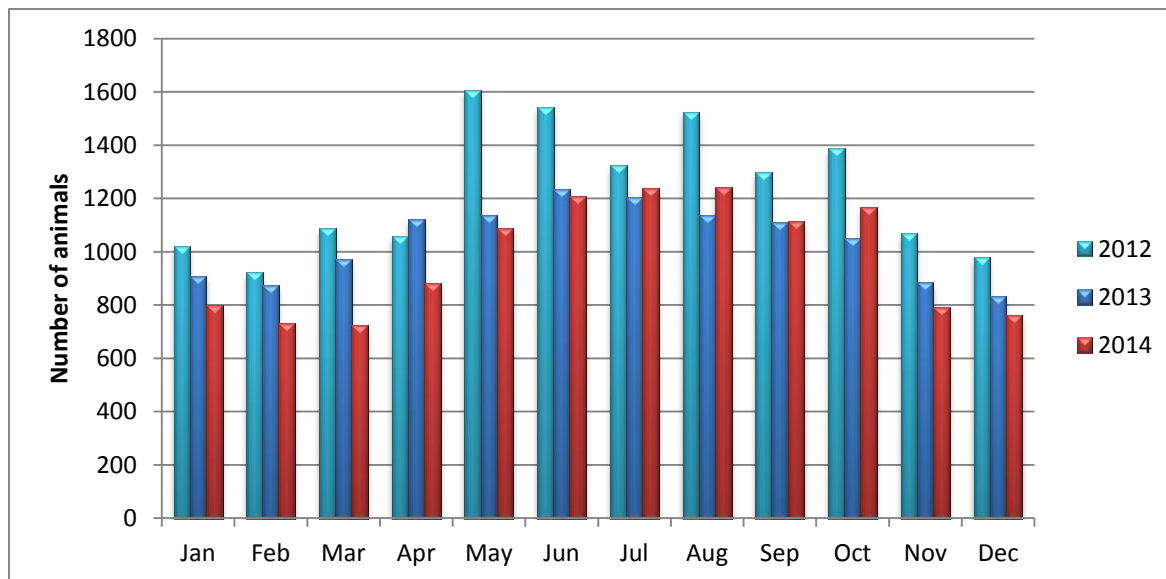
n= 1; 1 case in the month of December 2014; year to date cases= 20. (Note: The NC State Laboratory of Public Health October 2013 rabies cases in Wake County was revised from 2 to 3.)

## Animal Center Statistical Summary



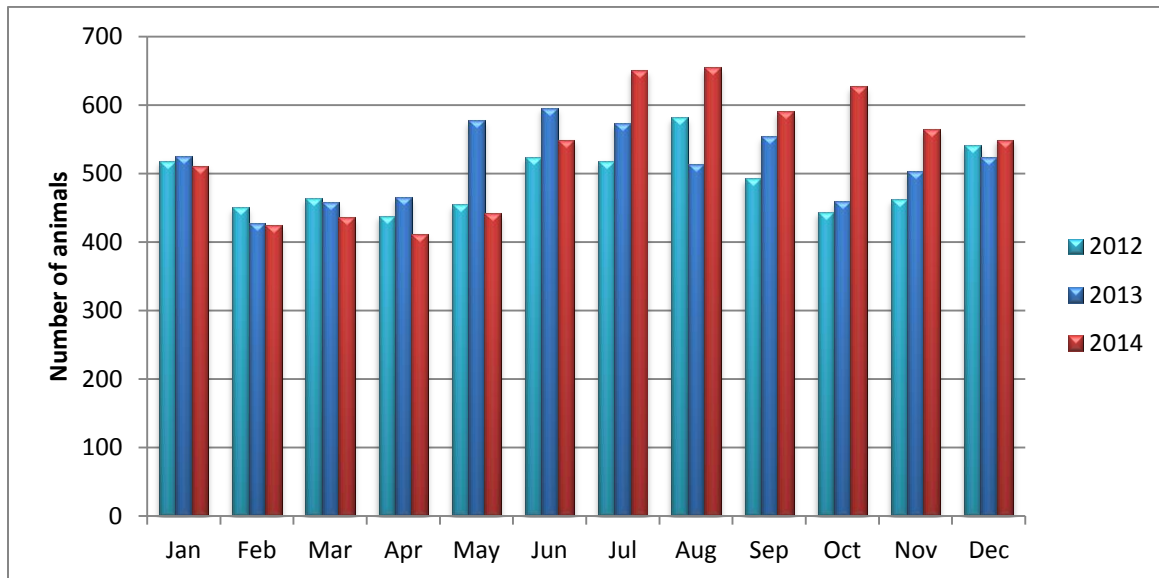
**Ebb and Flow of animal intake:** As depicted above, animal intake increases significantly in the warm months and drops in the cold months. This is typically associated with an increase in puppy and kitten litters in warm months. Adoptions do not generally increase along with intake, and due to this, euthanasia rates typically coincide with intake increases.

## Animal Center Intake Monthly Comparison



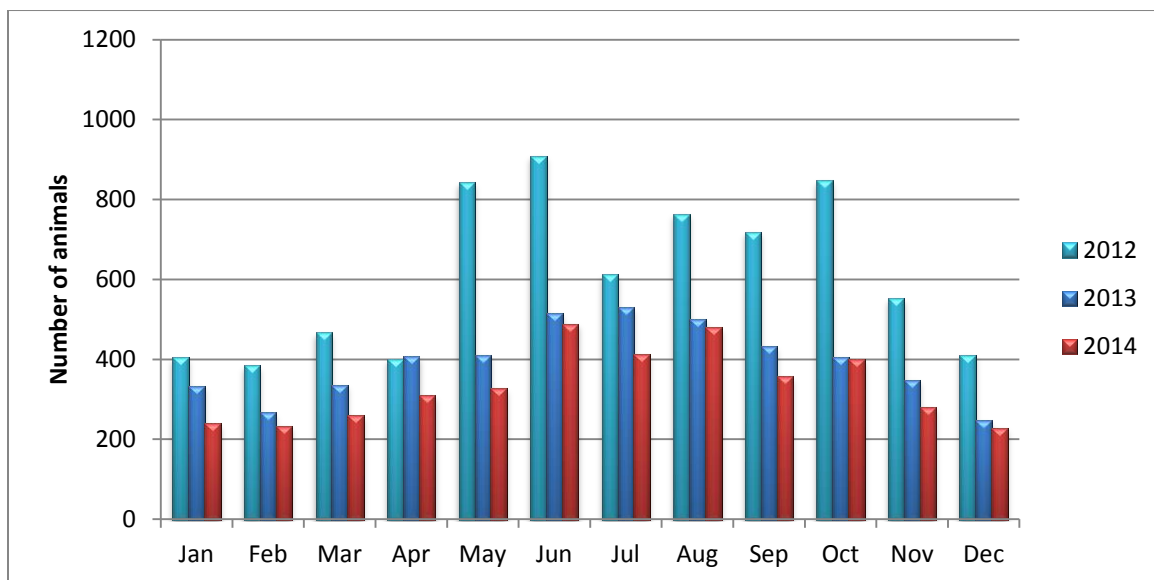
*N = 760; Intake decreased 8.7% from December 2013.*

## Adoption Monthly Comparison



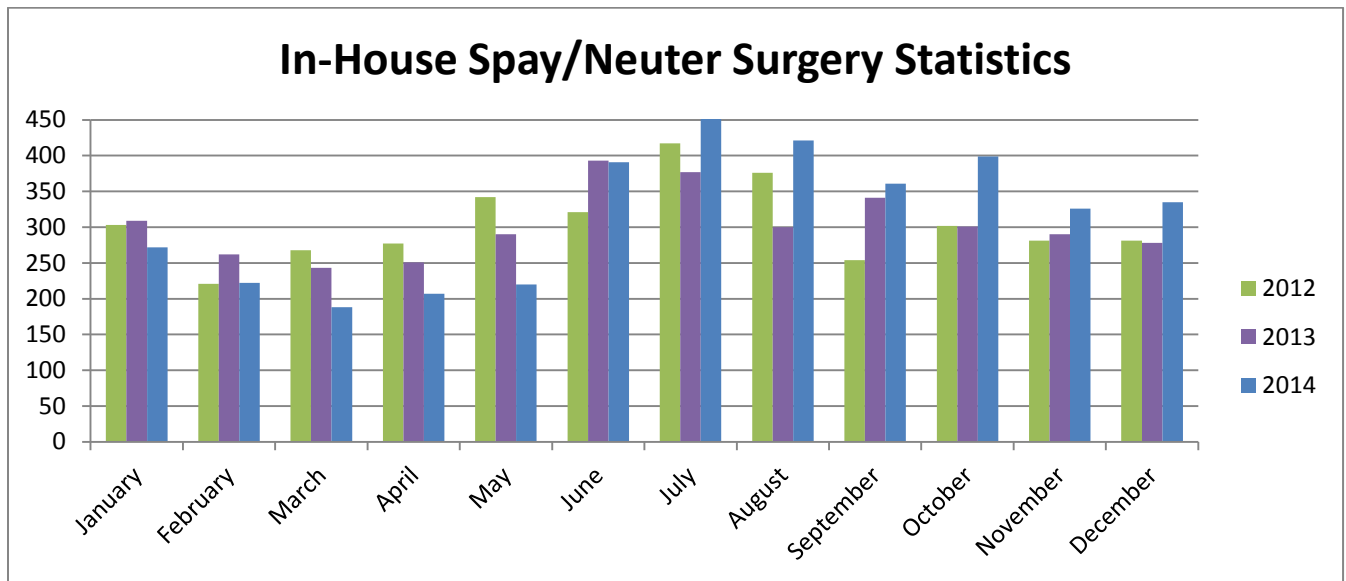
*n=549; data represents typical adoptions to new families; number of adoptions increased 5.0% as compared to December 2013.*

## Euthanasia monthly comparison



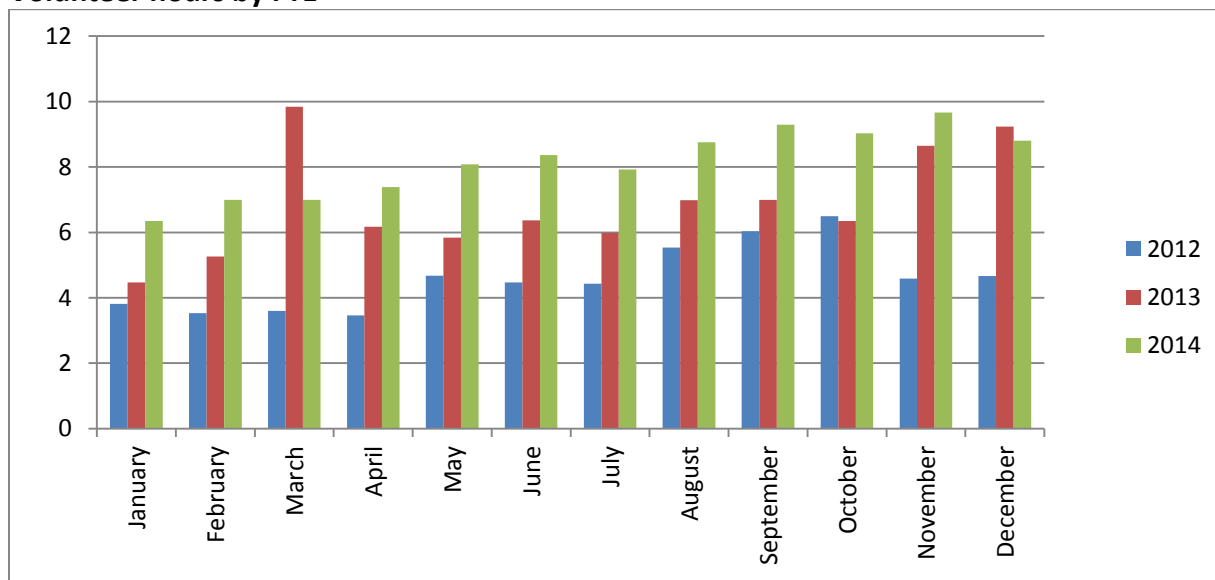
*n=229; The number of euthanasia decreased 7.0% from December 2013.*

## Spay/Neuter Surgeries monthly comparison



*n=335; spay/neuter surgeries; Three Hundred Thirty-five spay or neuter surgeries were performed during the month of December 2014 by the Center's in-house veterinary program*

## Volunteer hours by FTE



*n= 8.8 FTEs; Volunteers logged enough hours during the month of December 2014 equal to 8.8 extra full time employees. This includes dog walking, socialization, off-site events and work promoting animals in the community, just to name a few.*

## Wake County Animal Center Statistical Report

Date Range: July 1, 2014 - December 31, 2014

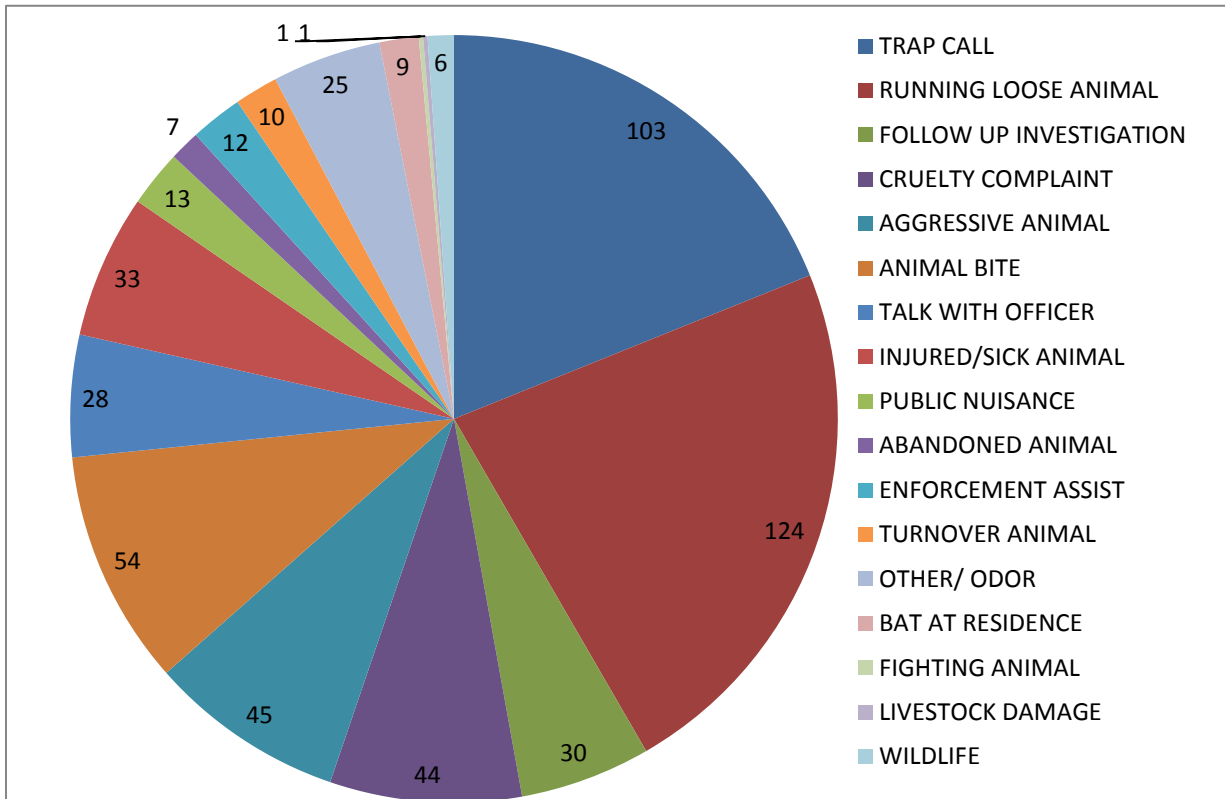
Date Prepared: 1/15/2015

	YTD FY12	%	YTD FY13	%	YTD FY14	%	YTD FY15	%	MTD	%
Intake Dog	3976		3615		2913		3057		458	
Intake Cat	3962		3637		3079		2974		284	
Intake Other	367		320		225		276		18	
<b>Intake Total</b>	<b>8305</b>		<b>7572</b>		<b>6217</b>		<b>6307</b>		<b>760</b>	
Adoption Dog	1646	41%	1383	38%	1242	42.6%	1223	40.0%	229	50.0%
Adoption Cat	1028	26%	966	27%	985	32.0%	949	31.9%	121	42.6%
Adoption Other	111	30%	80	25%	80	35.6%	90	32.6%	3	16.7%
<b>Adoption Total</b>	<b>2794</b>	<b>34%</b>	<b>2458</b>	<b>32%</b>	<b>2359</b>	<b>37.9%</b>	<b>2270</b>	<b>36.0%</b>	<b>354</b>	<b>46.6%</b>
Transfer Dog	455	11%	412	11%	488	16.8%	665	21.8%	103	22.5%
Transfer Cat	253	6%	126	3%	310	10.1%	642	21.6%	78	27.5%
Transfer Other	39	11%	60	19%	22	9.8%	67	24.3%	15	83.3%
<b>Transfer Total</b>	<b>747</b>	<b>9%</b>	<b>598</b>	<b>8%</b>	<b>820</b>	<b>13.2%</b>	<b>1374</b>	<b>21.8%</b>	<b>196</b>	<b>25.8%</b>
Reclaim Dog	637	16%	609	17%	517	17.7%	563	18.4%	81	17.7%
Reclaim Cat	90	2%	61	2%	68	2.2%	64	2.2%	8	2.8%
Reclaim Other	6	2%	4	1%	4	1.8%	3	1.1%	0	0.0%
<b>Reclaim Total</b>	<b>733</b>	<b>9%</b>	<b>674</b>	<b>9%</b>	<b>589</b>	<b>9.5%</b>	<b>630</b>	<b>10.0%</b>	<b>89</b>	<b>11.7%</b>
Euth Dog	1415	36%	1190	33%	646	22.2%	657	21.5%	89	19.4%
Euth Cat	2788	70%	2567	71%	1710	55.5%	1398	47.0%	131	46.1%
Euth Other	169	46%	149	47%	112	49.8%	104	37.7%	9	50.0%
<b>Euth Total</b>	<b>4374</b>	<b>53%</b>	<b>3906</b>	<b>52%</b>	<b>2469</b>	<b>39.7%</b>	<b>2160</b>	<b>34.2%</b>	<b>229</b>	<b>30.1%</b>

	Total	%
Change in intake from FY14 to FY15	90	1%
Change in adoptions from FY14 to FY15	-89	-4%
Change in transfers from FY14 to FY15	554	93%
Change in euthanasia from FY14 to FY15	-309	-8%
Change in total cat live releases	292	21.4%
Change in total dog live releases	204	9.1%

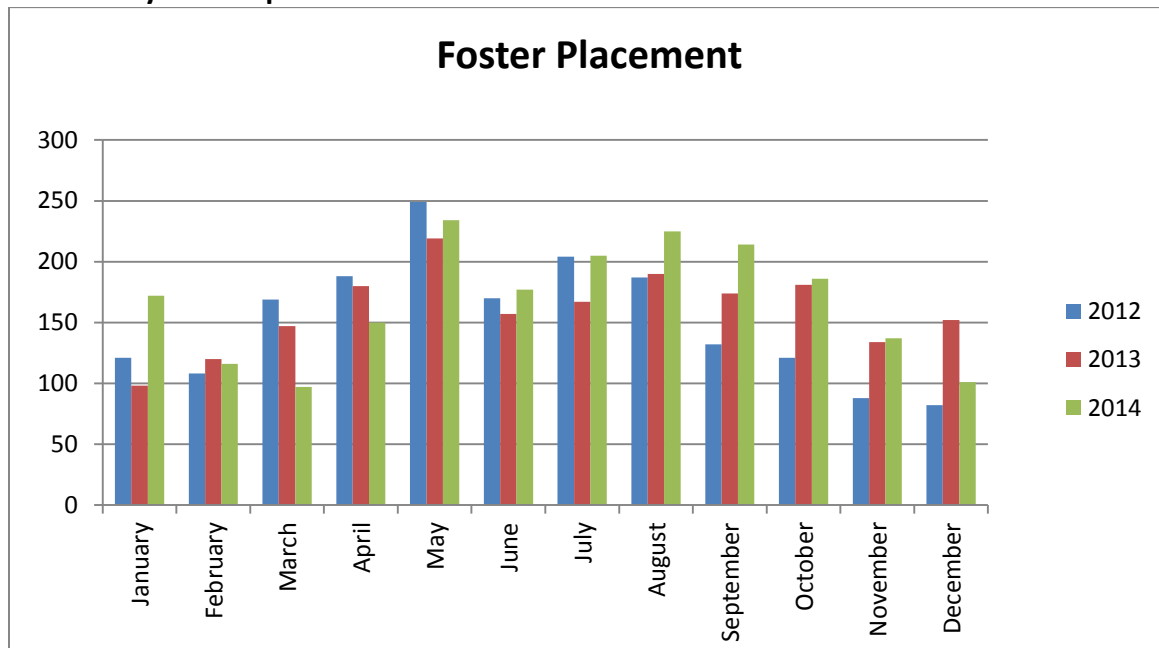
Note: a decrease in total numbers or percentage will show a (-) symbol and be in red. Increases will be in blue and will not show a (+) symbol. Note: The first three columns show three different fiscal years, using the date range indicated on the top left corner of the report. Each month, we will compare the same date range across the current and past three fiscal years for equal comparison.

## Animal Control Field Data



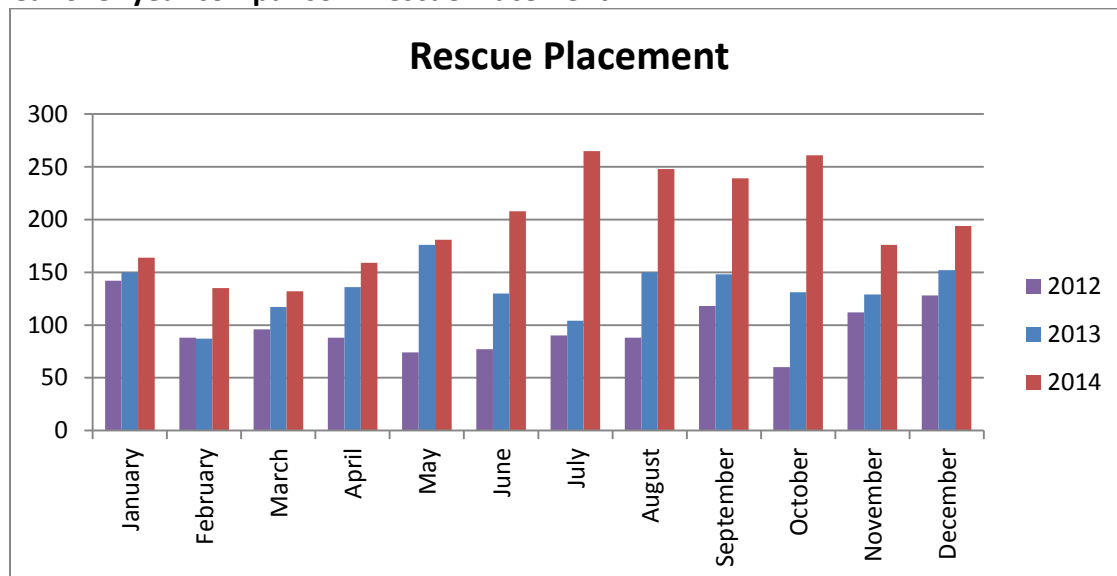
*n=545; Wake County Animal Control responded to 545 requests for service in December 2014. Requests for animal traps and complaints cruelty complaints were the majority of calls this month.*

### Year over year comparison: Foster Placement



*n=101; During the month of December 2014, One Hundred and one animals were placed into foster care. Foster placement decreased 3.4% from December 2013.*

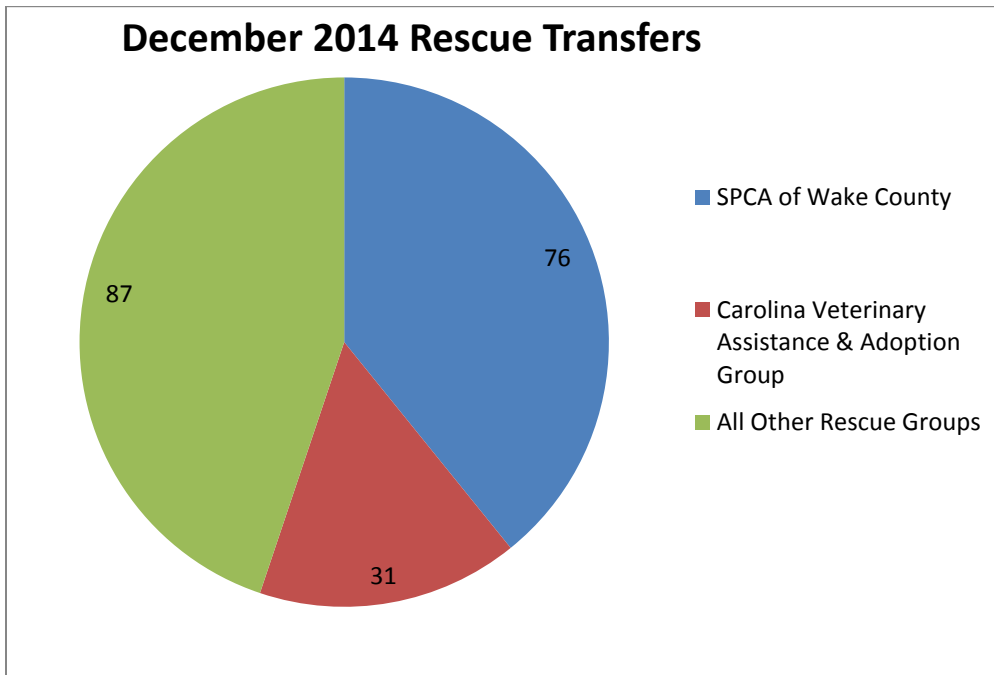
### Year over year comparison: Rescue Placement



*n=194; Rescue placement is 27.6% higher than December 2013. During the month of December 2014, One Hundred Ninety-four animals were placed into the care of partnering rescue groups and adoption centers.*



## Distribution of Rescue Placement



*n=194; WCAC transferred 194 animals to our rescue partners during the month of December 2014.*