

# Wake County EMS System Peer Review System Performance Report

November 2018-February 2019  
Information



EMS System



@wakegov    

wakegov.com

# Operations Update



Prompt  
Compassionate  
Clinically Excellent Care

WAKE COUNTY

# Congratulations!

- **Promoted to District Chief:**
  - **Wake County EMS**
    - Avery Brown
    - Brian “Snap” Woodard
    - Nikki Burakowski
    - Shannon “Bull” Holley
  - **Cary EMS**
    - Kaylor Mead
- **Added 6 new Relief District Chiefs as well**



# Operational Training

- **Railroad 101 by Norfolk Southern Hazmat Group**
  - Safety and awareness class when operating near the railroad.
- **Glenwood Towers Fire After Action Incident Review**
  - Lots of good lessons.



# New units

- **EMS 30 went in service 2/11. It is assigned to the New Hope Station (Louisburg Rd near Wake Tech North Campus).**
  - New station will be opening in a the next few months. Currently deploys from ESEC for start and stop.
  - Day peak truck serving from 0730-1930
- **EMS 67 will be in service before our next meeting and assigned to Wendell Main with Eastern Wake.**
  - Times TBD

# Dreamville Festival

- **DDH Campus**
  - 308 acre site
  - Multi-stage built venue
- **April 6, 2019**
  - 1200-2300 (until it clears out)
- **Projected Attendance: 35,000**
- **Staffing with several venue teams, transport units, medical tents, cart teams, command staff.**
- **Expected challenges**
  - Parking (downtown decks),
  - Pedestrian/scooter traffic from DDH to downtown,
  - Alcohol (liquor bars – with big cost),
  - Saturday night with event ending with crowds surging into downtown.



# Special Event and Mass Gathering Updates

- Concert season at Walnut Creek, Red Hat, and Koka Booth begin in April.
- NCAA continues with basketball wrapping up, plus baseball, track and field, etc.
- NHL continues with the Hurricanes.
- **Street festival season is also kicking off.**
  - Kicking off 3/16 with St. Patrick's Day Parade, Festival, and 2 days of block parties on Glenwood South.

A stylized, light blue map of Wake County is centered in the background of the slide. The map shows the county's irregular shape with some internal divisions.

# EMS Response Data



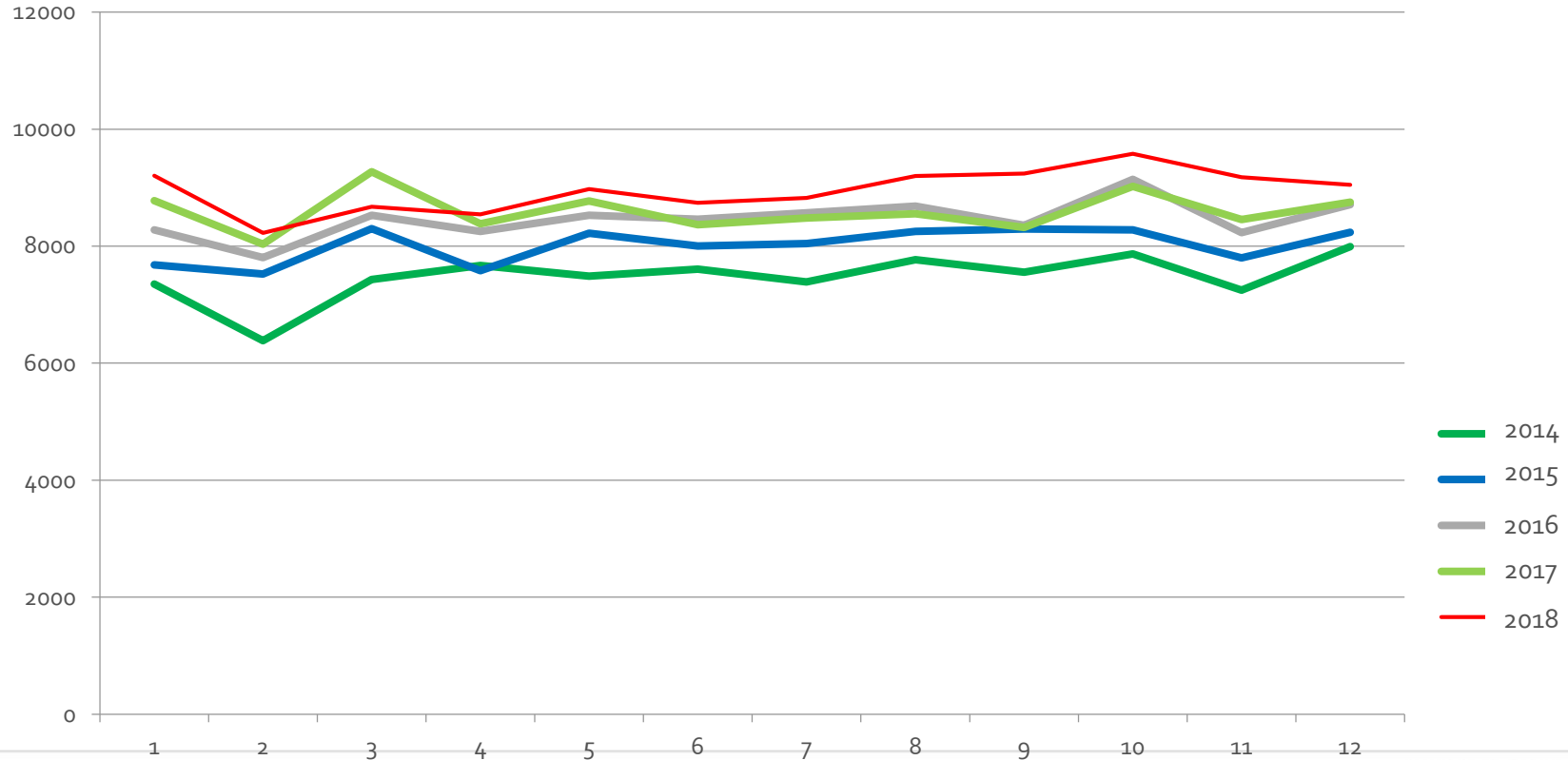
# EMS Response Data

## 2018 Annual Data

- 107,432 incidents
- Increase of 4.12% over 2017
- Average of 295 incidents per day with several months over 300/day
  - Largest volume day in history on November 19<sup>th</sup> with 365 calls in 24 hours.
- In 2013, ran total of 85,688 incidents – 5 year increase of 25%

# EMS Response Data 2014-2018

Year to Date by Calls Per Month



# EMS Response Data

January – February 2019

- 17,442 incidents
- Increase of 1% for this same period in 2018
- Average of 296 incidents per day

# Low System Resources (ESTAT) Update

# ESTAT

## 2018 Annual Data

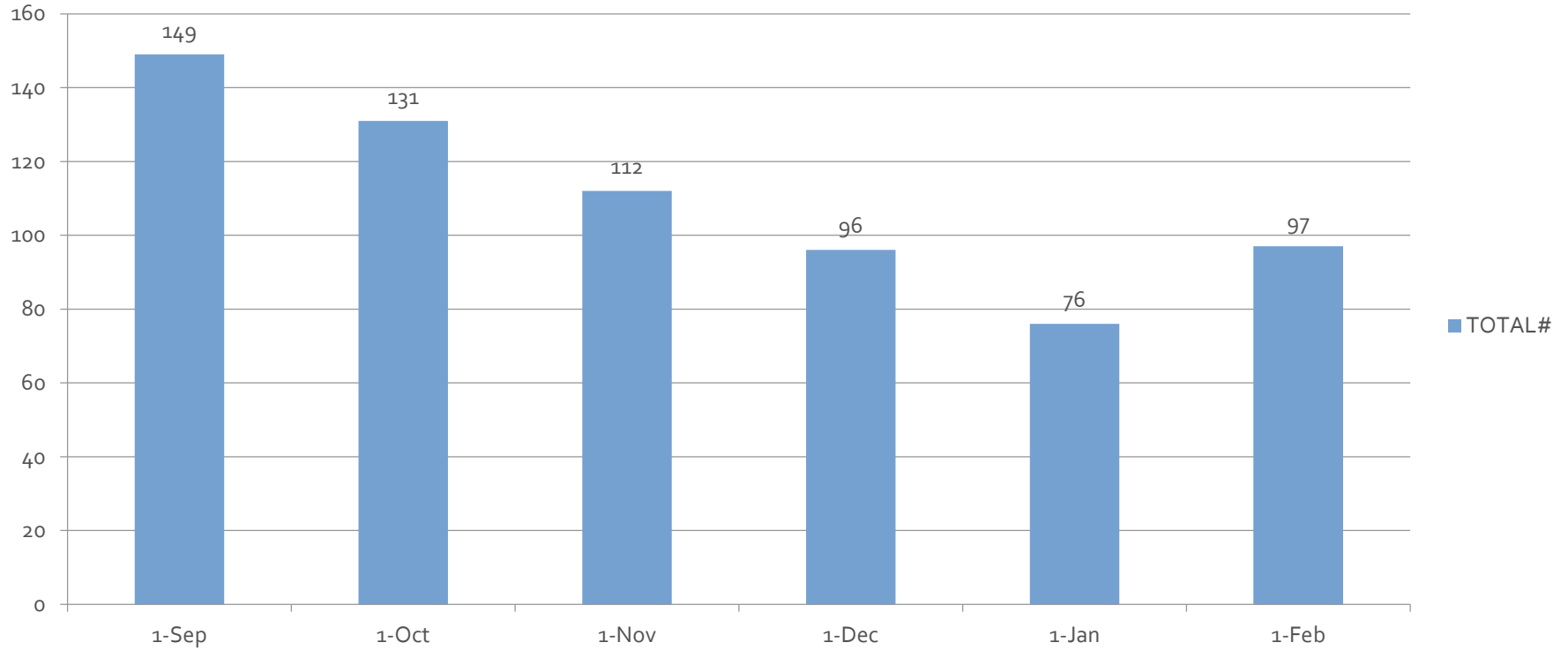
- **1377 ESTAT events for CY2018, compared to 1123 for CY2017**
  - 23% increase
- **Total of 842 hours in ESTAT for CY2018, compared to 587 for CY2017**
  - 43% increase
- **Busiest month: September**
- **Longest duration of single event:**
  - 7 hrs 58 mins in October

# ESTAT

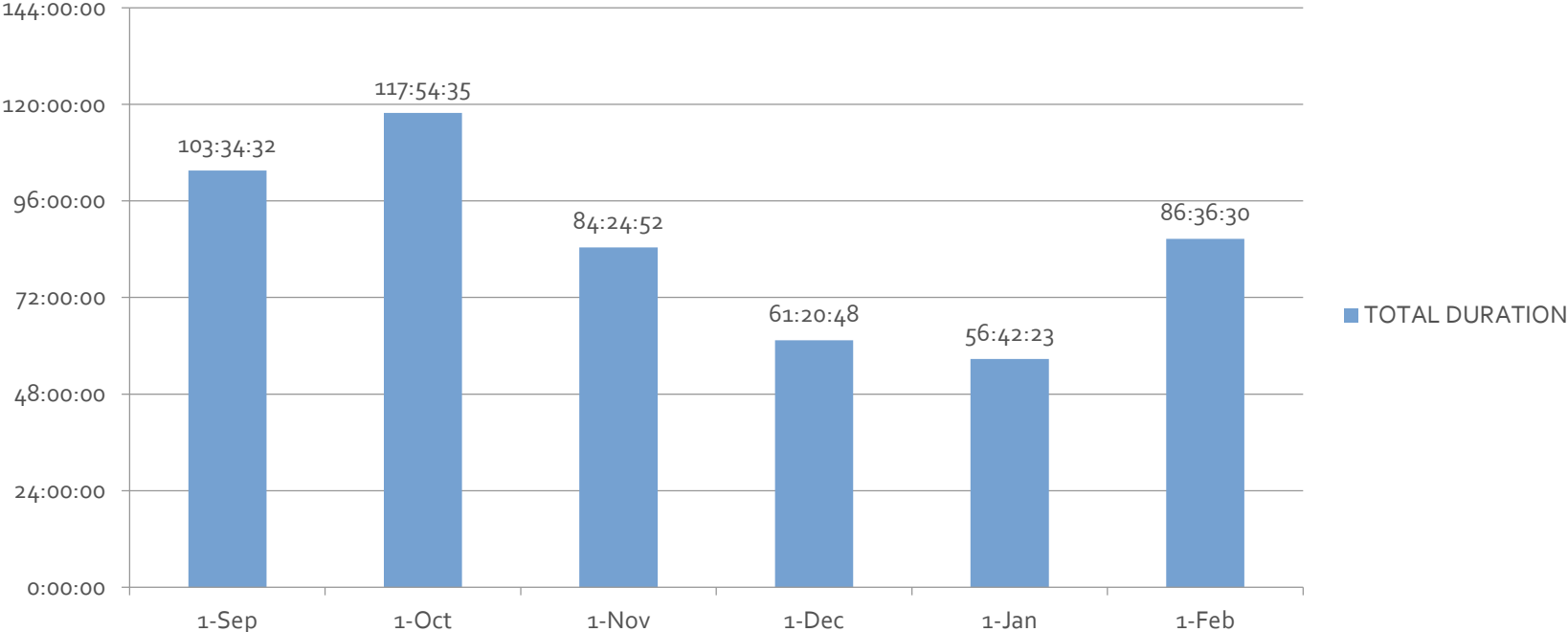
## January-February 2019

- January 2019 had 76 ESTAT events and February had 97 ESTAT events.
- Total of 142 hours in ESTAT for the 2 months with the longest duration just over 4 hours.

## ESTATTOTAL EVENTS



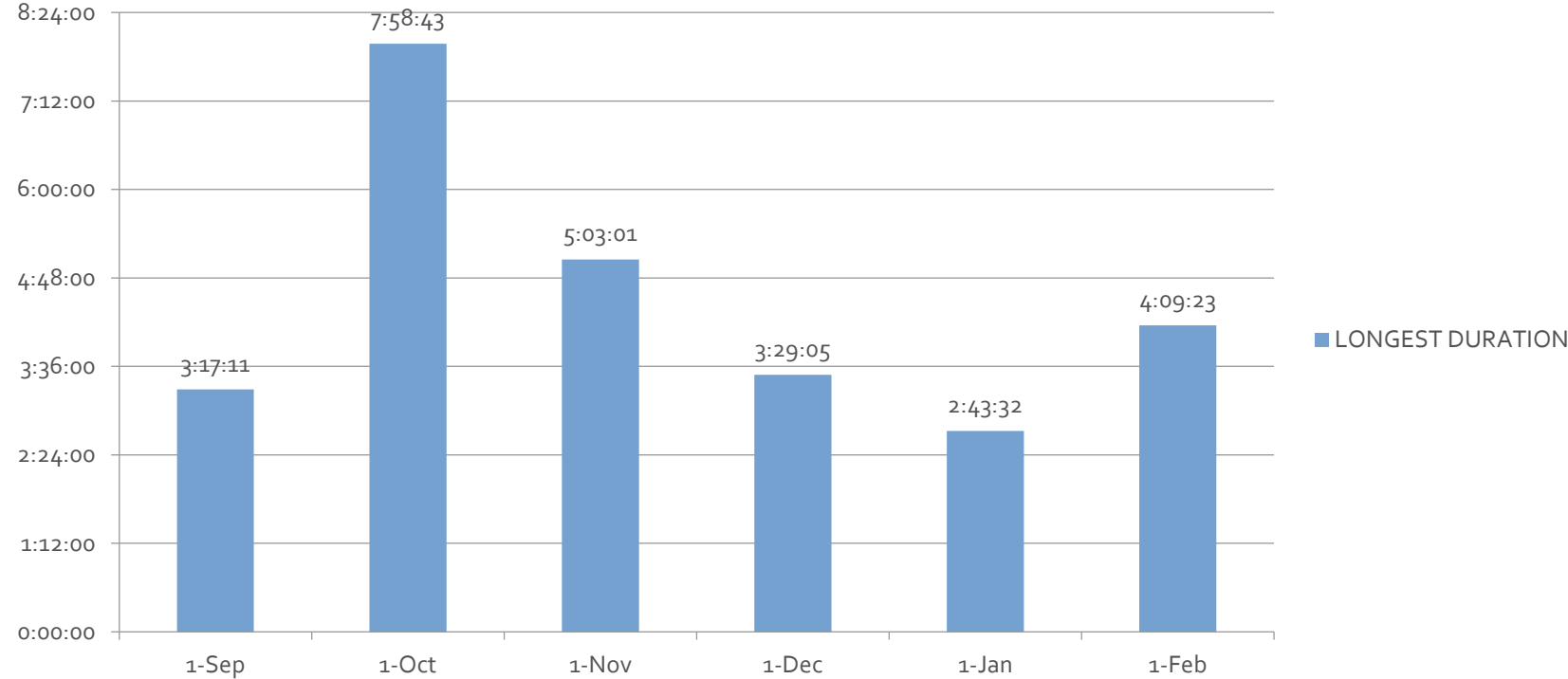
# ESTAT TOTAL DURATION



Displayed "Hours:Minutes:Seconds"

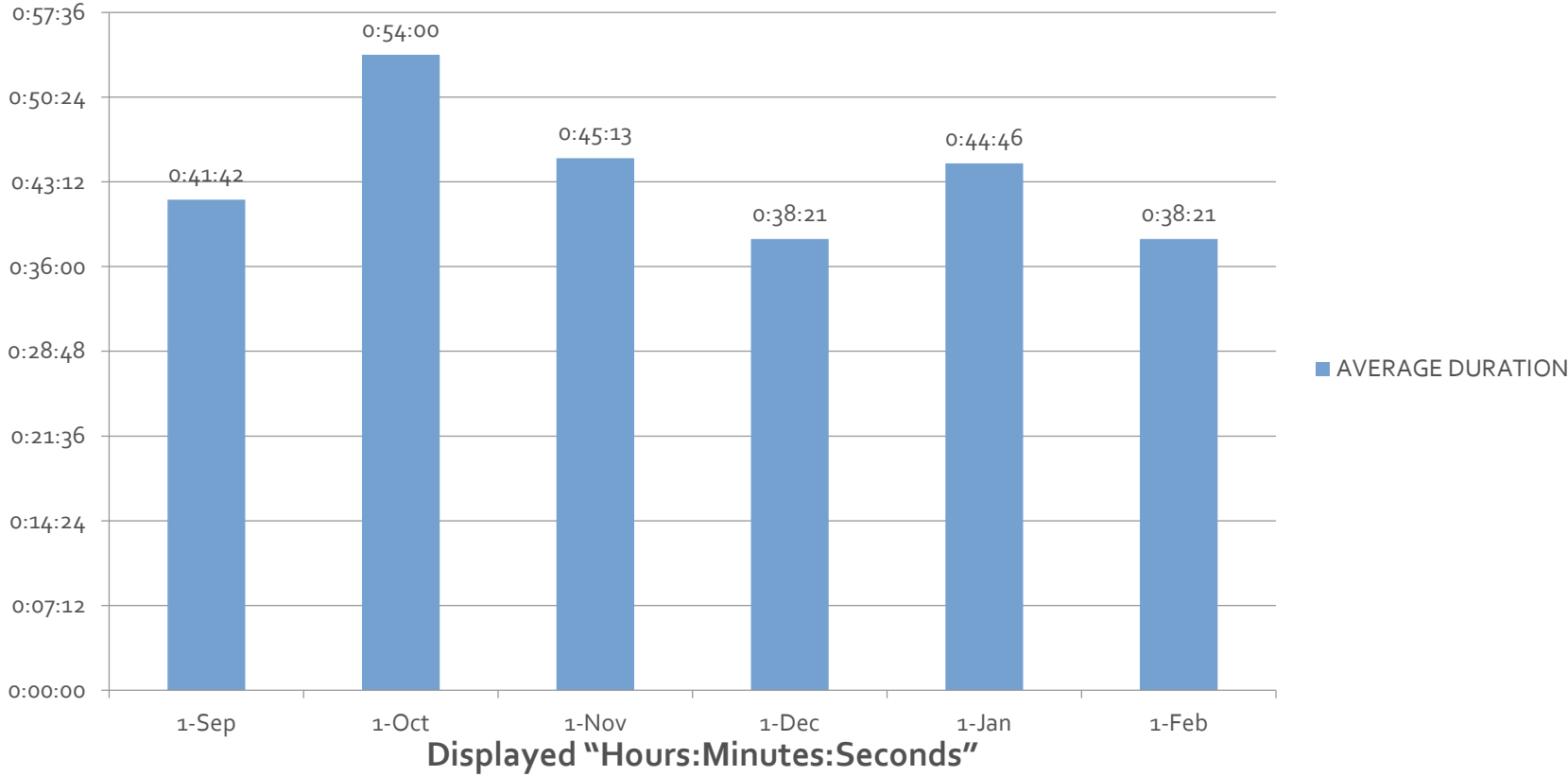


# ESTAT LONGEST DURATION

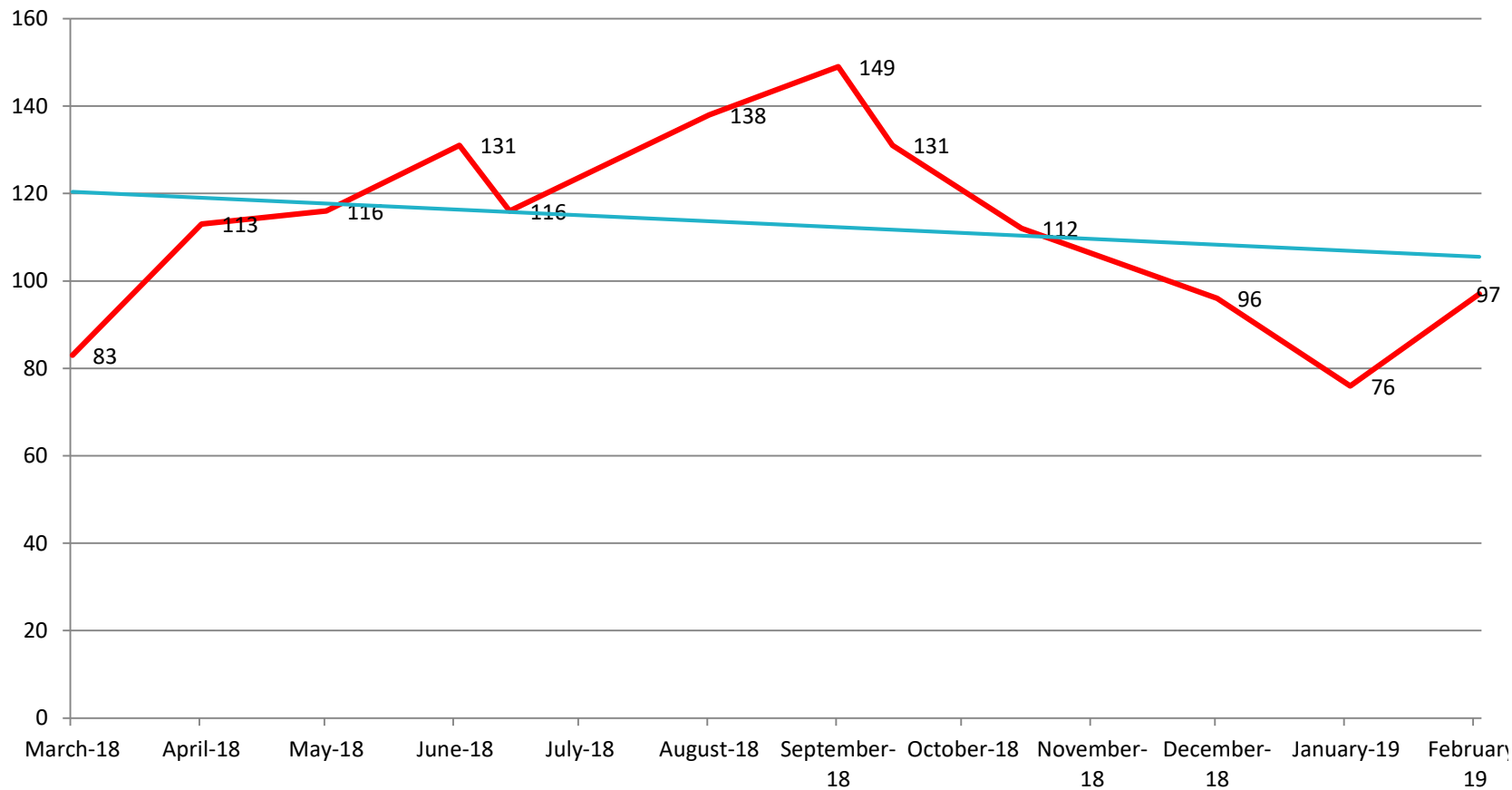


Displayed "Hours:Minutes:Seconds"

# ESTAT AVG DURATION



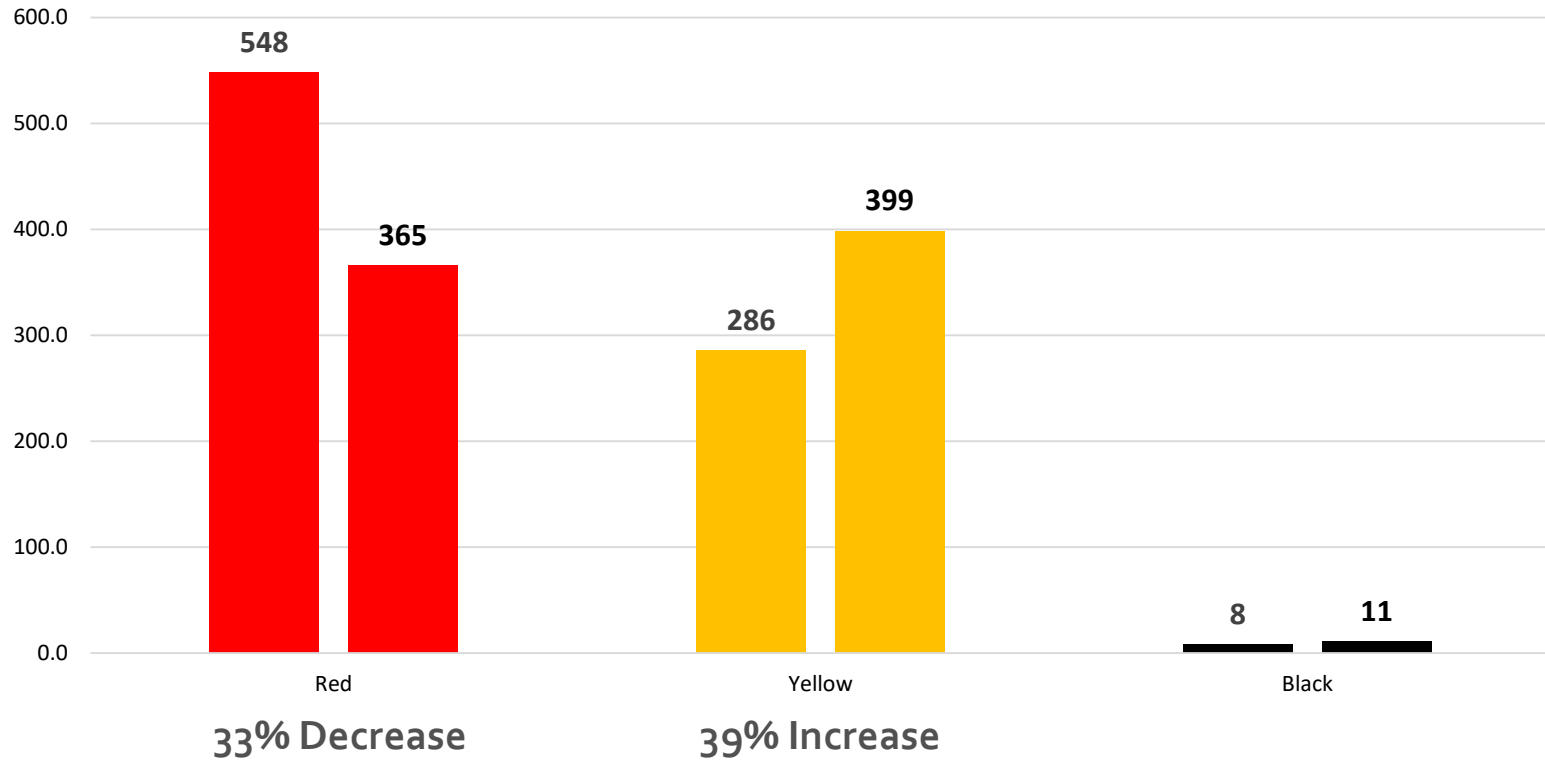
## ESTAT PER MONTH LAST 12 MONTHS



# Hospital Diversion

# CY 2018 Summary

## Diversion Hours Comparison 2017 to 2018



# January-February 2019

# Wake County EMS System Peer Review System Performance

## Questions?



@wakegov    

wakegov.com