

# Wake County EMS System Peer Review System Performance Report

January 2018 – April 2018 Information

---

**The Wake County EMS System – *Prompt, Compassionate, Clinically Excellent***



*Care*



# Operations Update

---

**The Wake County EMS System – *Prompt, Compassionate, Clinically Excellent***



*Care*



# Assistant Chief of Operations – Shift Commander

- Primarily responsible for the oversight and management of the shift by shift activities of the EMS system.
- Maintain operational and situational awareness of the EMS System to make strategic as well as tactical decisions in an effort to maintain system effectiveness and efficiency.
- Though the Shift Commander will be operationally capable, the primary function will be management and completion of administrative functions rather than response.
- They will be designated as Chief 200 on the radio. Will be starting in the next few weeks.

---

**The Wake County EMS System – *Prompt, Compassionate, Clinically Excellent***



*Care*



# Assistant Chief of Operations – Shift Commander

- Congratulations to:
  - Curtis Fuko
  - Greg Guillaume
  - Wesley Marshall
  - Kevin Phillips

---

**The Wake County EMS System – *Prompt, Compassionate, Clinically Excellent***



*Care*



# Major Incident Communications

- EMS and Wake County Emergency Departments need a standardized way to communicate during major incidents.
- Recently participated with the MCI Communications Standard work group led by CapRAC.
  - Document submitted to OEMS for review
  - If approved by NCOEMS Medical Director, this will be sent to the EMS Systems Committee to be incorporated into an existing protocol and will also be shared with the NC Healthcare Association (NCHA) for distribution to hospitals

---

**The Wake County EMS System – *Prompt, Compassionate, Clinically Excellent***



*Care*



# Wake County EMS and Wake County Emergency Department Use of a Common Radio Channel during Major Incidents or MPIs

## Major Incident Declaration Criteria:

- 10+ patients of any acuity
- 5+ patients meeting trauma criteria
- 3<sup>rd</sup> alarm or greater for EMS response (awareness)
- Active assailant response
- Any incident with a high suspicion for large numbers of patients with an inability to confirm exact numbers (collapse, explosion)
- Confirmation of a significant fire with occupants reported in the building or injuries on location (High Rise Fire or High Life Hazard)
- Airport incident with a confirmed crash, confirmation of hard landing, or multiple ill on board the plane.
- Mass transit incidents with injuries (train, bus, airplane, etc)
- Discretion of a District Chief for unlisted incidents

EMS District Chief declares a major incident and requests the ECC supervisor sends an Everbridge Notification (ECC 715: EMS Major Incident)

Raleigh Wake Emergency Communication Center Supervisor activates Everbridge notification "ECC 715 EMS Major Incident" system to all hospitals announcing that EMS has declared a major incident and should switch portable radios to MC\_Hotel and stand by for more information.

EMS assigns a transportation group supervisor (TGS) or destination coordinator and switches to MC\_Hotel

All Wake County ED's will switch to MC\_Hotel using issued portable

ED's will assign personnel to monitor MC\_Hotel

ED's will still need to monitor primary channel



TGS or Dest. Coord. Provides initial size up and updates to EDs

ED Point of Contact on MC\_Hotel can provide updates to EMS Command Post in field

**ED will provide:**

- Surge capacity
- Status on self presenting patients
- Hospital Status Changes (Diversion)
- Modified operations at ED facilities

TGS or Dest. Coord. demobilizes MC\_Hotel

## Event information:

- Alert Only\* or Confirmed Casualties (alerts are wanted so hospital can prepare)
- Location of event
- Estimated event size
- Type of incident, including specific hazard (hazardous materials, radiation, security risks, infectious agents), if known

## Number and types of patients:

- Estimated number of casualties
- Identify special populations (e.g. pediatric and/or OB patients)
- Identify if casualties are responsive or unresponsive; any known blunt or penetrating traumas
- Estimated number of casualties potentially going to hospital(s) in privately owned vehicles and/or EMS

EMS

ED's

Flow

INFO

RWECC



# Major Incident Communications: Declaration Criteria

## Major Incident Declaration Criteria:

- 10+ patients of any acuity
- 5+ patients meeting trauma criteria
- 3<sup>rd</sup> alarm or greater for EMS response (awareness)
- Active assailant response
- Any incident with a high suspicion for large numbers of patients with an inability to confirm exact numbers (collapse, explosion)
- Confirmation of a significant fire with occupants reported in the building or injuries on location (High Rise Fire or High Life Hazard)
- Airport incident with a confirmed crash, confirmation of hard landing, or multiple ill on board the plane.
- Mass transit incidents with injuries (train, bus, airplane, etc)
- Discretion of a District Chief for unlisted incidents

**The Wake County EMS System – *Prompt, Compassionate, Clinically Excellent***



*Care*



# Major Incident Communications: Messaging

- “Wake County EMS has declared a major incident. All hospital emergency departments should turn on their portable radios and select the MC Hotel channel. Additional information will be provided over the MC Hotel channel”
- Voice, text, and email

---

**The Wake County EMS System – *Prompt, Compassionate, Clinically Excellent***

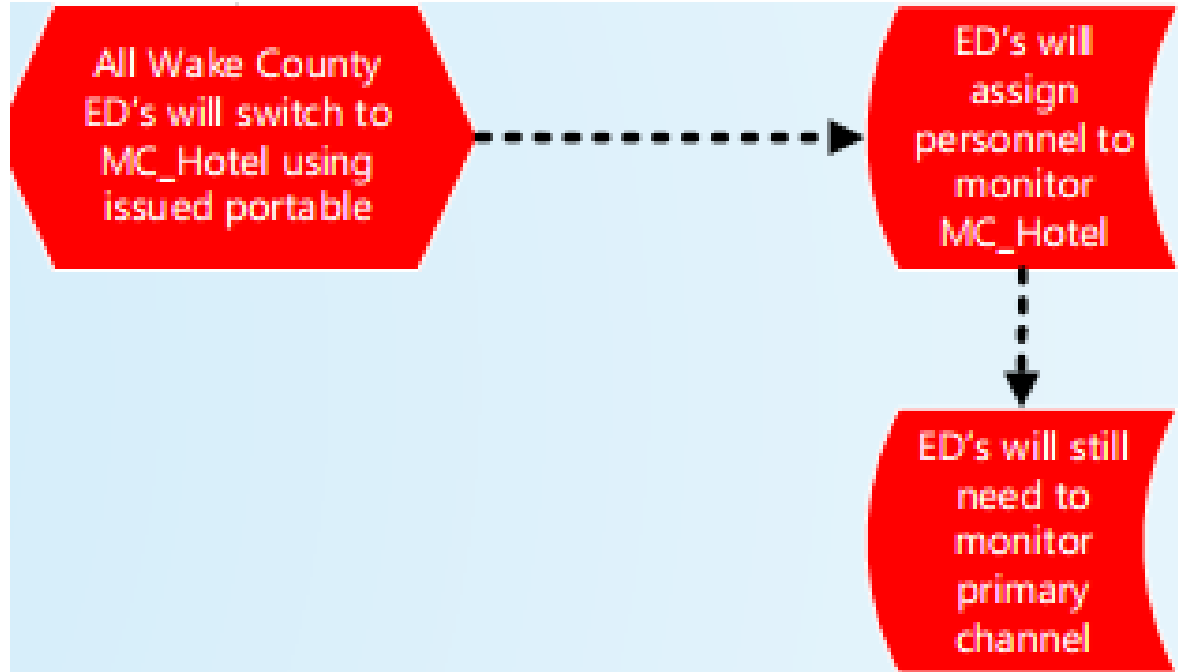


*Care*





# After the ringdown, EDs will...



**The Wake County EMS System – *Prompt, Compassionate, Clinically Excellent***



*Care*



# Major Incident Communications:

## Bi-directional sharing

### Number and types of patients:

- Estimated number of casualties
- Identify special populations (e.g. pediatric and/or OB patients)
- Identify if casualties are responsive or unresponsive; any known blunt or penetrating traumas
- Estimated number of casualties potentially going to hospital(s) in privately owned vehicles and/or EMS

### Event information:

- Alert Only\* or Confirmed Casualties (alerts are wanted so hospital can prepare)
- Location of event
- Estimated event size
- Type of incident, including specific hazard (hazardous materials, radiation, security risks, infectious agents), if known

### ED will provide:

- Surge capacity
- Status on self presenting patients
- Hospital Status Changes (Diversion)
- Modified operations at ED facilities

**The Wake County EMS System – *Prompt, Compassionate, Clinically Excellent***



*Care*



# Wake County EMS and Wake County Emergency Department Use of a Common Radio Channel during Major Incidents or MPIs

## Major Incident Declaration Criteria:

- 10+ patients of any acuity
- 5+ patients meeting trauma criteria
- 3<sup>rd</sup> alarm or greater for EMS response (awareness)
- Active assailant response
- Any incident with a high suspicion for large numbers of patients with an inability to confirm exact numbers (collapse, explosion)
- Confirmation of a significant fire with occupants reported in the building or injuries on location (High Rise Fire or High Life Hazard)
- Airport incident with a confirmed crash, confirmation of hard landing, or multiple ill on board the plane.
- Mass transit incidents with injuries (train, bus, airplane, etc)
- Discretion of a District Chief for unlisted incidents

EMS District Chief declares a major incident and requests the ECC supervisor sends an Everbridge Notification (ECC 715: EMS Major Incident)

Raleigh Wake Emergency Communication Center Supervisor activates Everbridge notification "ECC 715 EMS Major Incident" system to all hospitals announcing that EMS has declared a major incident and should switch portable radios to MC\_Hotel and stand by for more information.

EMS assigns a transportation group supervisor (TGS) or destination coordinator and switches to MC\_Hotel

All Wake County ED's will switch to MC\_Hotel using issued portable

ED's will assign personnel to monitor MC\_Hotel

ED's will still need to monitor primary channel



TGS or Dest. Coord. Provides initial size up and updates to EDs

ED Point of Contact on MC\_Hotel can provide updates to EMS Command Post in field

**ED will provide:**

- Surge capacity
- Status on self presenting patients
- Hospital Status Changes (Diversion)
- Modified operations at ED facilities

TGS or Dest. Coord. demobilizes MC\_Hotel

## Event information:

- Alert Only\* or Confirmed Casualties (alerts are wanted so hospital can prepare)
- Location of event
- Estimated event size
- Type of incident, including specific hazard (hazardous materials, radiation, security risks, infectious agents), if known

## Number and types of patients:

- Estimated number of casualties
- Identify special populations (e.g. pediatric and/or OB patients)
- Identify if casualties are responsive or unresponsive; any known blunt or penetrating traumas
- Estimated number of casualties potentially going to hospital(s) in privately owned vehicles and/or EMS

EMS

ED's

Flow

INFO

RWECC



# Events Update

- **Upcoming Trainings and Mass Gatherings:**
  - Raleigh Fourth of July Fireworks
    - Moving back to West Raleigh (PNC and NC State Fairgrounds)
    - Still plenty happening downtown, including a Day Party, Red Hat Concert, race at DDH and State Capitol grounds celebration.
  - Concert Season and Festival Season
    - Artspllosure – Fayetteville St Corridor – May 18-20.
  - Road Races:
    - Ironman 70.3 – June 3, 2018
      - 1.2 mile swim / 56 mile bike / 13.1 mile run
  - Exercises:
    - MS1 Drill – Fuquay to Rex
    - LEPC TTX – August 14, 2018 at ESEC

---

**The Wake County EMS System – *Prompt, Compassionate, Clinically Excellent***



*Care*



# EMS Response Data

---

**The Wake County EMS System – *Prompt, Compassionate, Clinically Excellent***



*Care*



# EMS Response Data

**JANUARY – APRIL 2018**

- **34,644** incidents
- Increase of **0.5%** over 2017
- Average of **289** incidents per day
- 5 year increase of nearly **6000** calls, or **20%**

---

**The Wake County EMS System – *Prompt, Compassionate, Clinically Excellent***

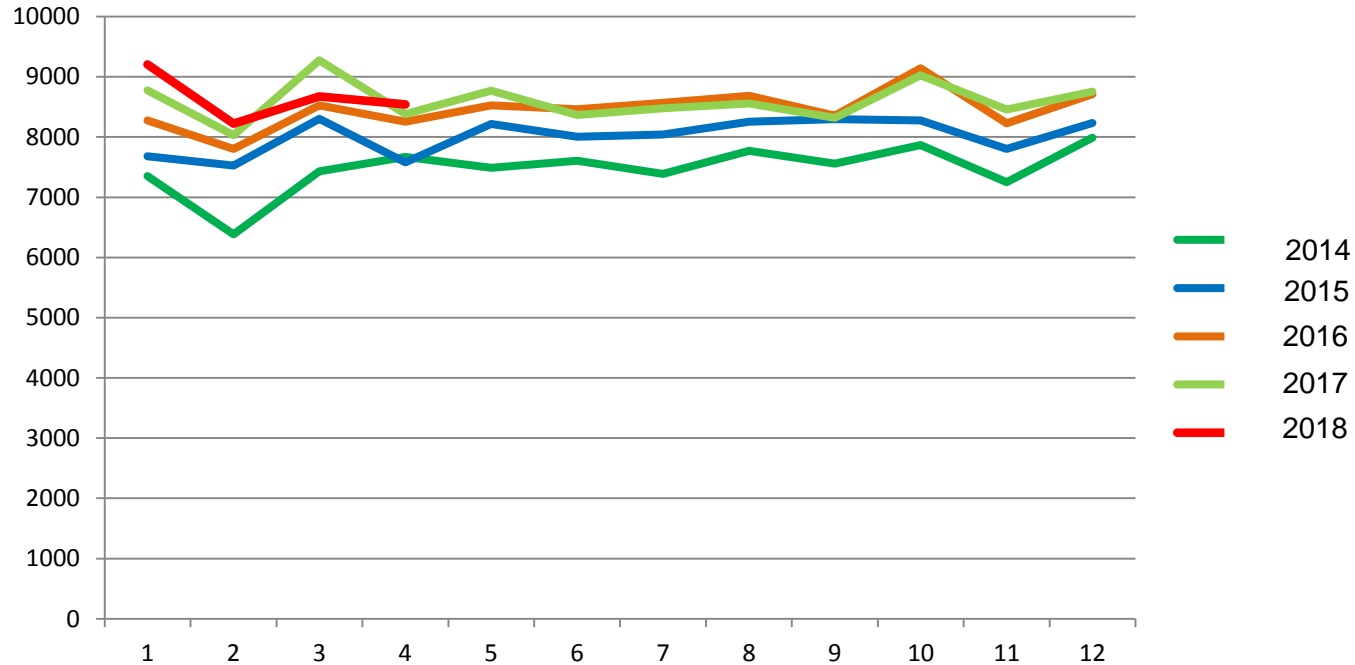


*Care*



# EMS Response Data 2014-2018

January through April cumulative



**The Wake County EMS System – *Prompt, Compassionate, Clinically Excellent***

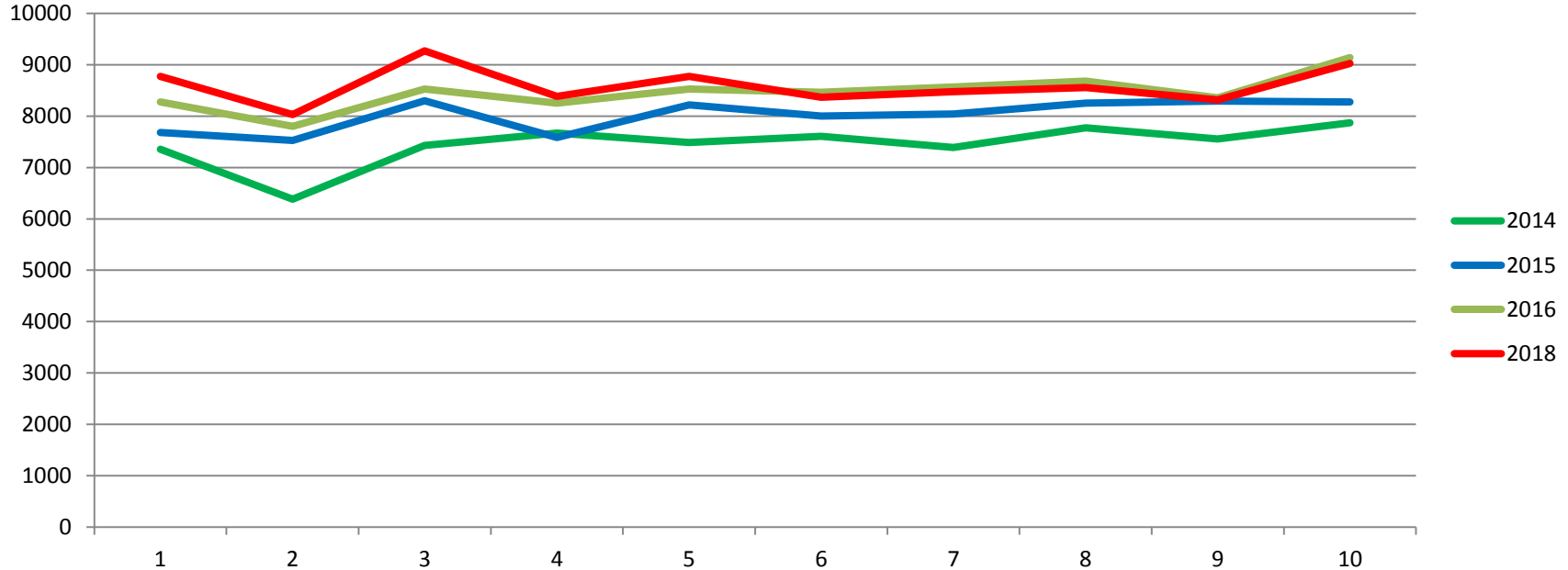


*Care*



# EMS Response Data 2014-2017

January through October Calls Per Month



**The Wake County EMS System – *Prompt, Compassionate, Clinically Excellent***



*Care*





# Low System Resources (ESTAT) Update

---

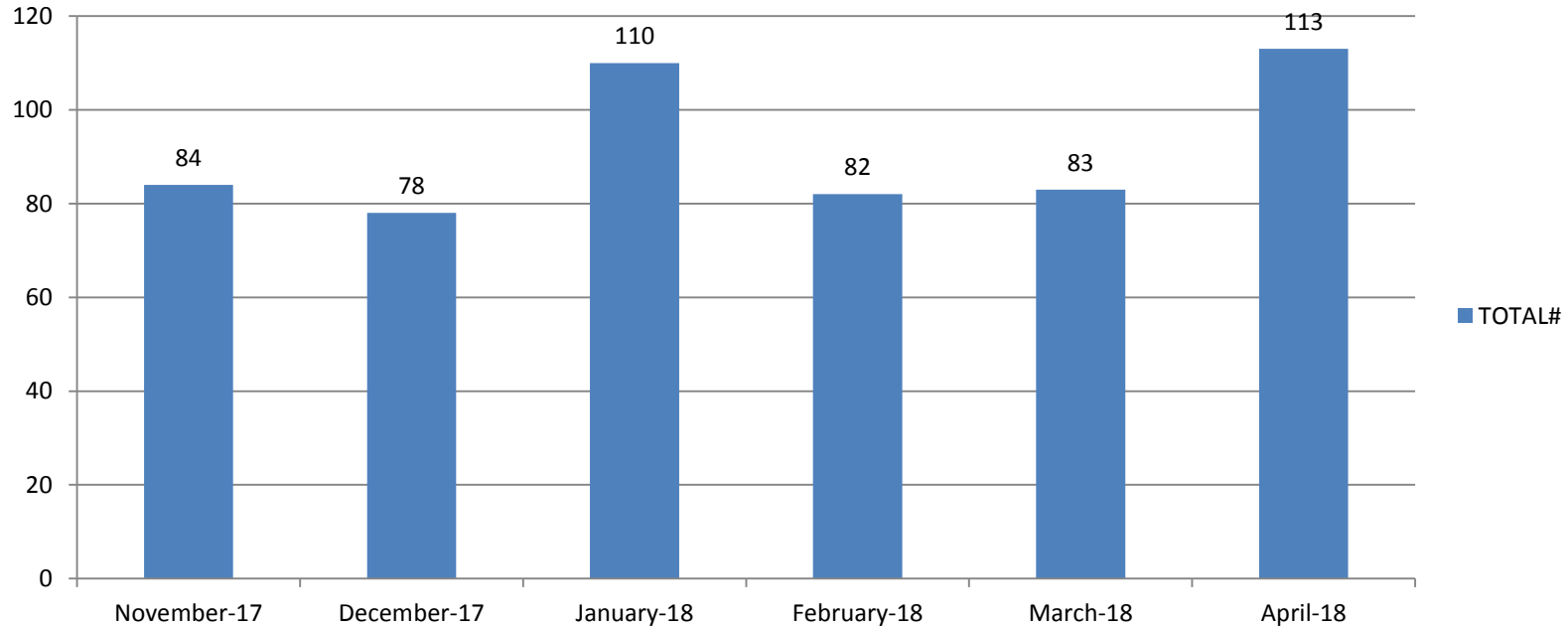
The Wake County EMS System – *Prompt, Compassionate, Clinically Excellent*



*Care*



## ESTAT TOTAL EVENTS



**The Wake County EMS System – *Prompt, Compassionate, Clinically Excellent***



*Care*



# Low System Resources Data

- **1,123** ESTAT events for the 2017 calendar year
- For **CY2016**, the system was in ESTAT for 16 days, 16 hours, and 36 minutes (or **24,036** minutes), accounting for 4.6% of the entire year
- For **CY2017**, the system was in ESTAT for 24 days, 12 hours, and 20 minutes (or **35,300** minutes), accounting for 6.7% of the entire year

---

**The Wake County EMS System – *Prompt, Compassionate, Clinically Excellent***



*Care*



# Low System Resources Data

- For January 2018, **110** events for a total of 47 hours and 50 minutes

---

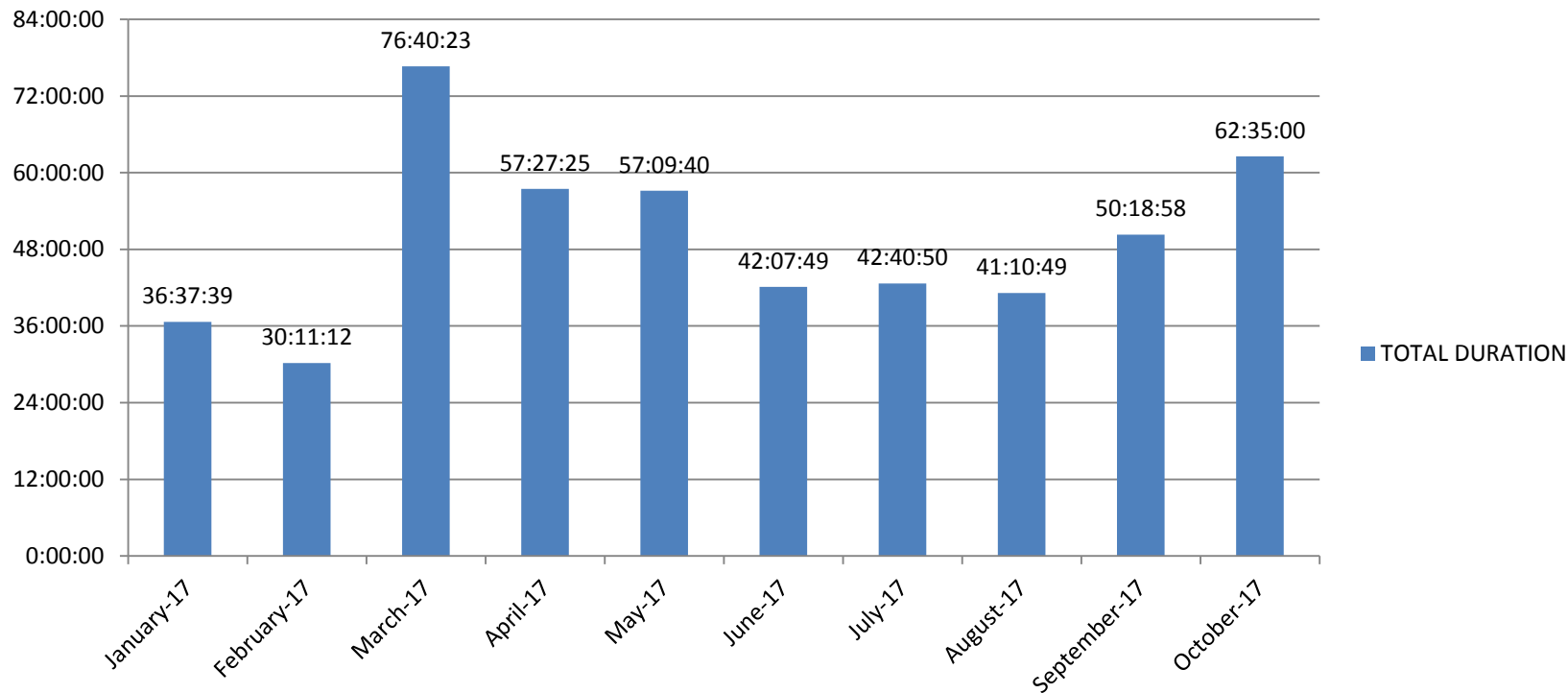
The Wake County EMS System – *Prompt, Compassionate, Clinically Excellent*



*Care*



## ESTAT TOTAL DURATION



Displayed "Hours:Minutes:Seconds"

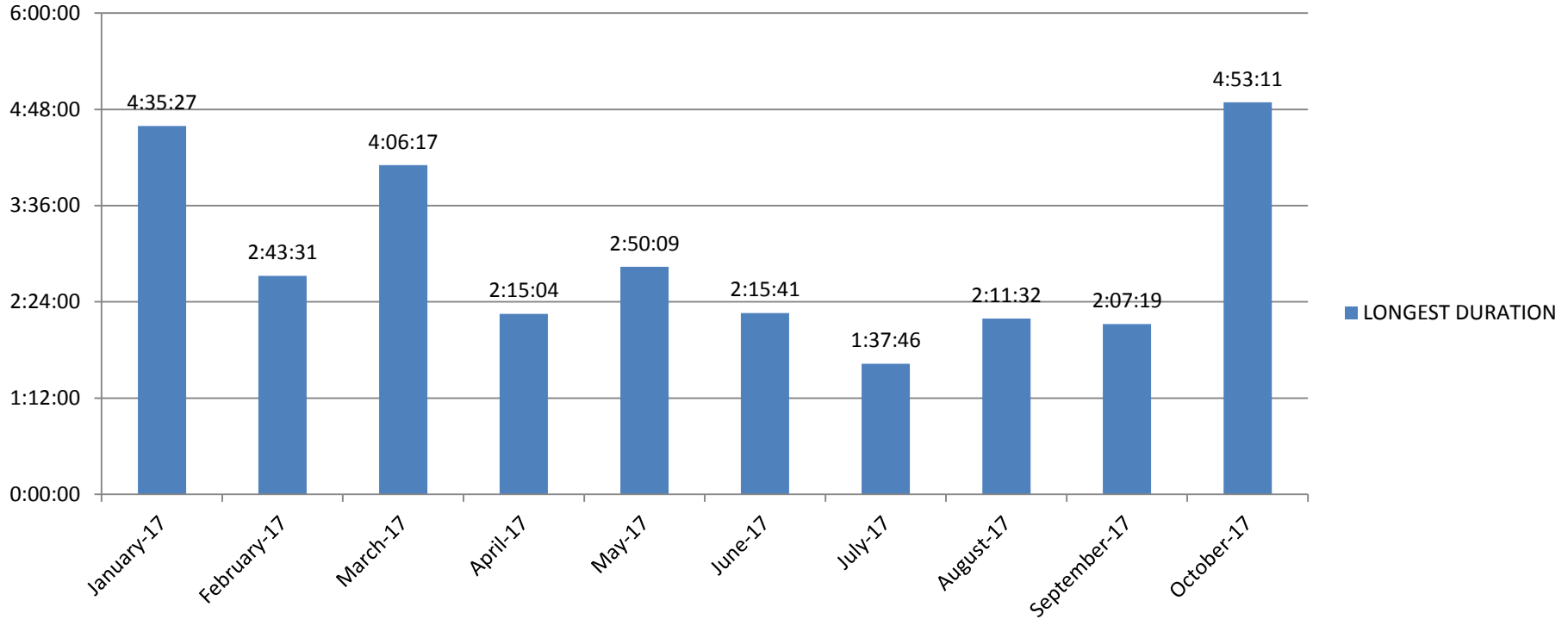
**The Wake County EMS System – *Prompt, Compassionate, Clinically Excellent***



*Care*



## ESTAT LONGEST DURATION



Displayed "Hours:Minutes:Seconds"

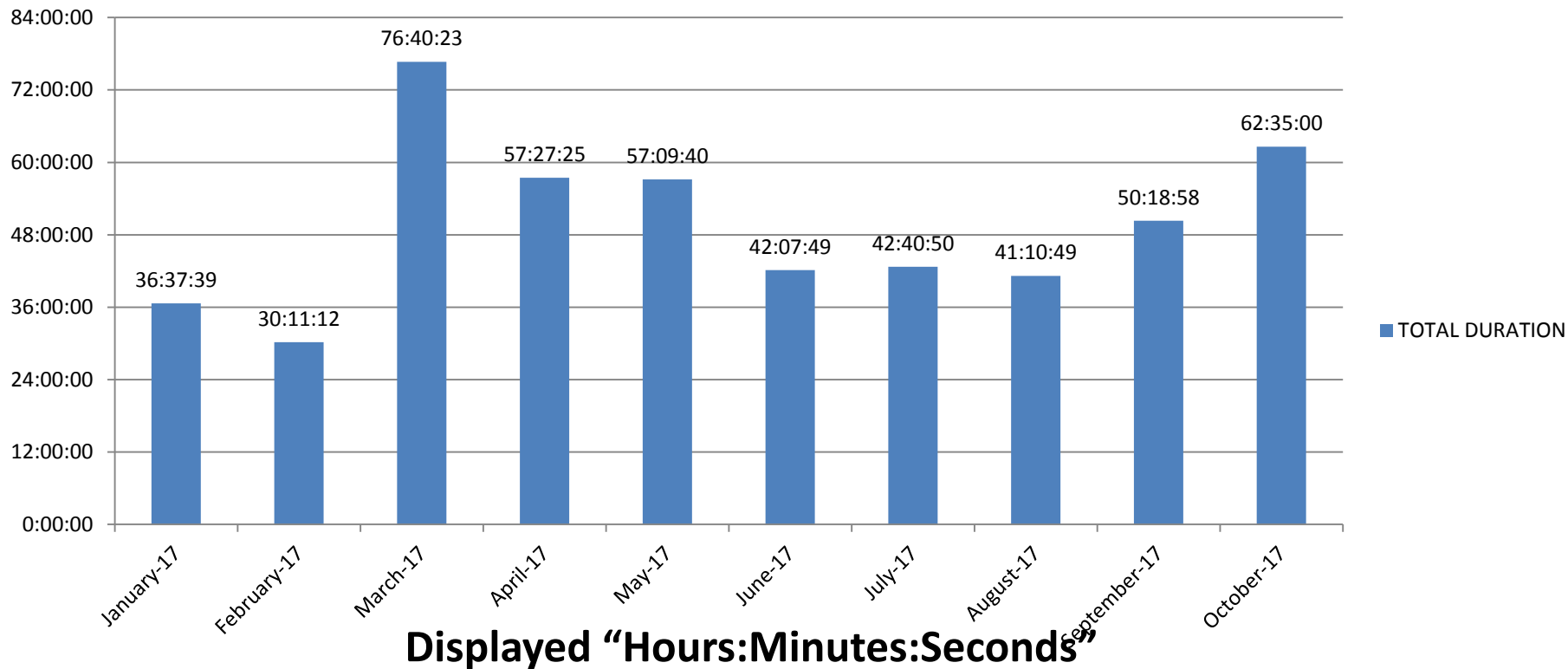
**The Wake County EMS System – Prompt, Compassionate, Clinically Excellent**



*Care*



## ESTAT TOTAL DURATION



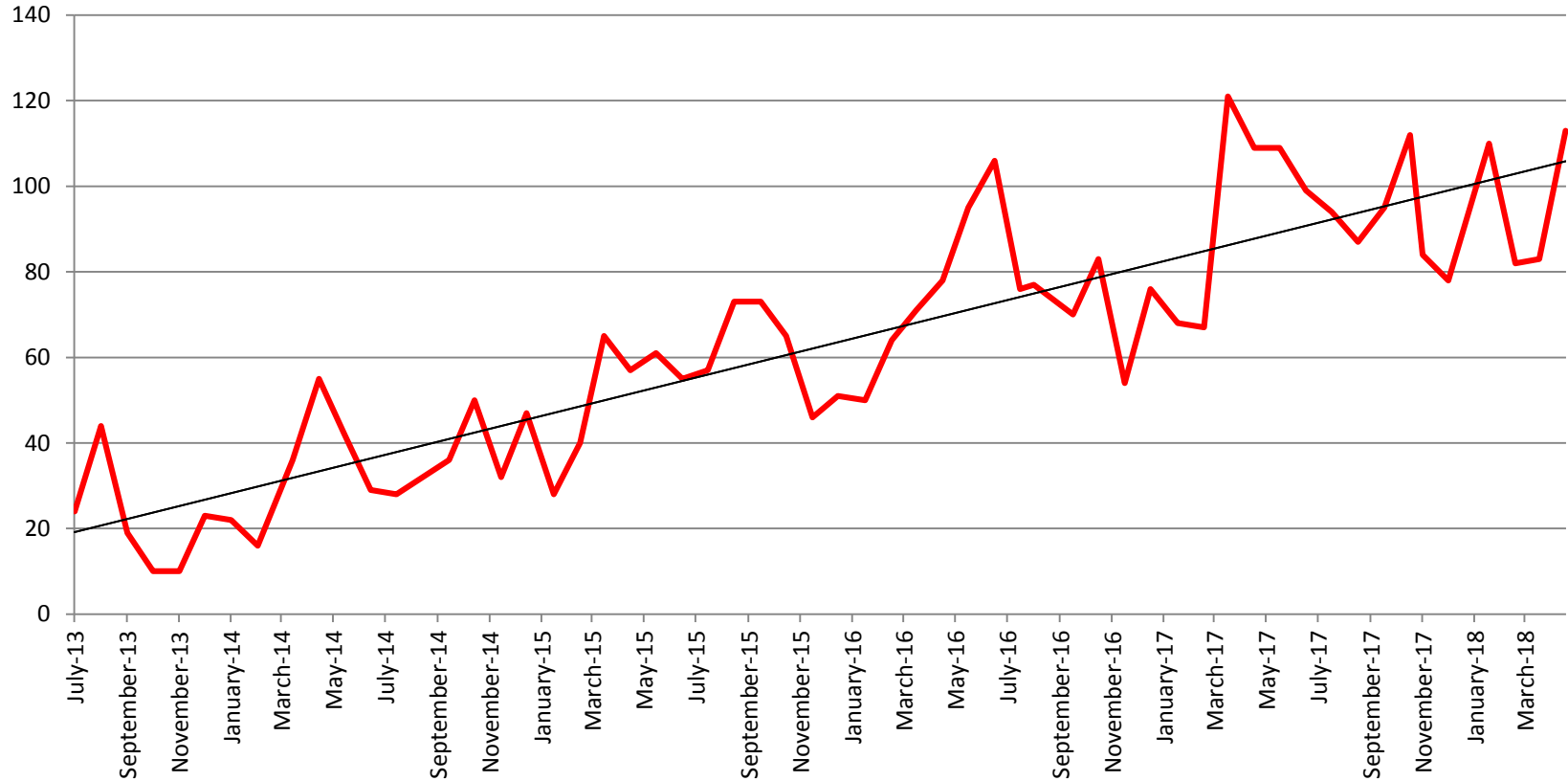
**The Wake County EMS System – *Prompt, Compassionate, Clinically Excellent***



*Care*



# ESTAT PER MONTH



**The Wake County EMS System – *Prompt, Compassionate, Clinically Excellent***

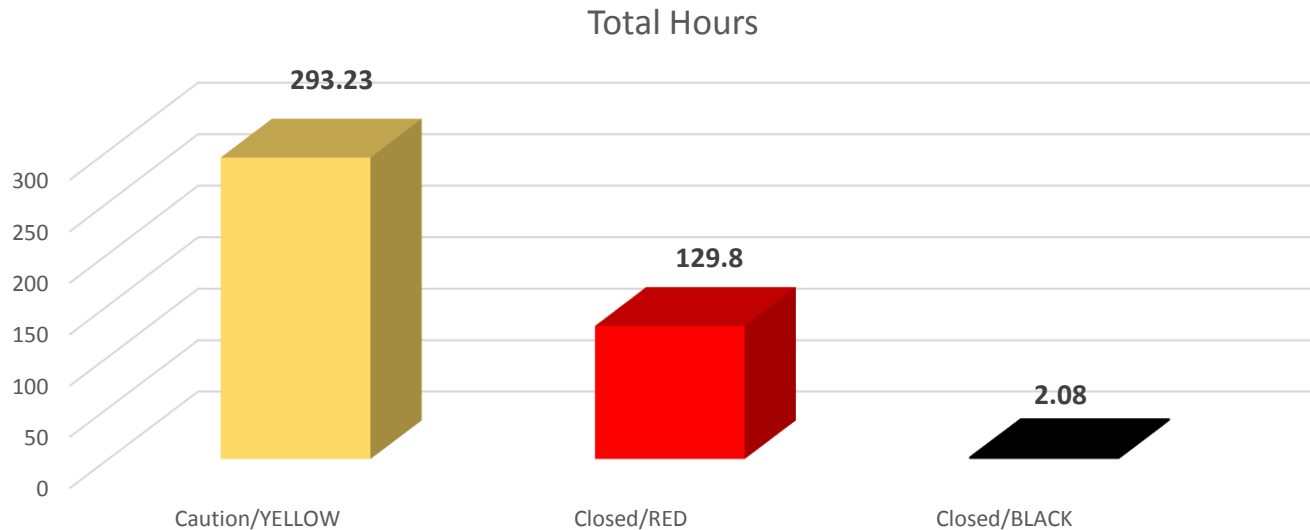


*Care*





# All Diversion: Jan-Apr



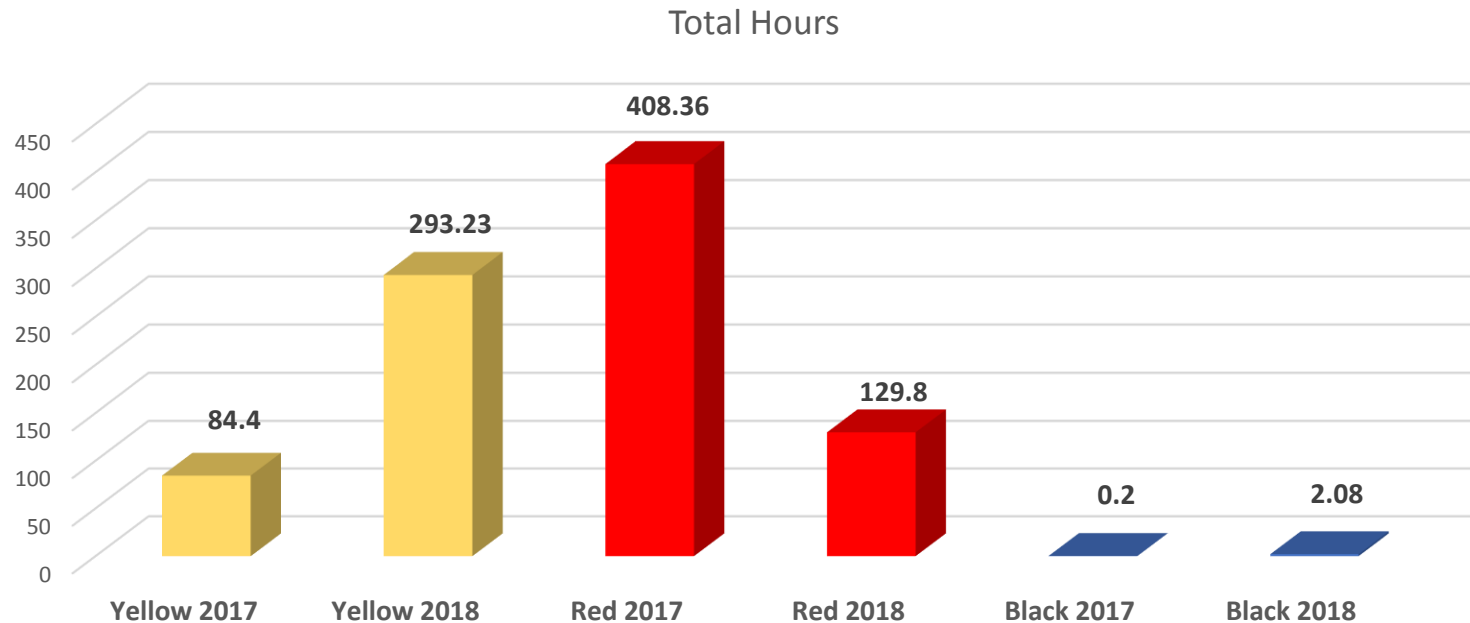
**The Wake County EMS System – *Prompt, Compassionate, Clinically Excellent***



*Care*



# All Diversion: Jan-Apr 2017 to 2018



**The Wake County EMS System – *Prompt, Compassionate, Clinically Excellent***



*Care*



# Diversion Update

- Saw a **68%** decrease in Red Diversion utilization from 2017 to 2018, attributed to much better coordination between the stakeholders
- Great discussion continues with the GroupMe app between the hospitals

---

The Wake County EMS System – *Prompt, Compassionate, Clinically Excellent*



*Care*

