



Valley Water

Clean Water • Healthy Environment • Flood Protection



Stream Maintenance Program Renewal

Presented by: Ken Schwarz and Allison Chan, Horizon Water and Environment

Outline

1. Introductions
2. Meeting Purpose
3. Program Background and Overview
4. 2022 Program Updates (SMP-3)
5. SMP-3 Timeline
6. Stakeholder Comments

1. Introductions

Valley Water:

Scott Akin

Billy Williams

Jeff Lewis

John Chapman

Jennifer Codianne

Devin Mody

Cody Houston

Horizon Water and Environment:

Ken Schwarz

Allison Chan

2. Meeting Purpose

- Update stakeholders about SMP-3 planning process.
- Receive input from stakeholders on SMP-3.

3. Program Background and Overview

Stream Maintenance Program Evolution:

- 2001: Stream Maintenance Program (SMP-1);
EIR certified 2002
- 2011: 2014-2023 Stream Maintenance Program
(SMP-2); Subsequent EIR certified 2012
- Present: 2024-2033 Stream Maintenance Program
(SMP-3)

Program Goals

SMP activities are intended to meet two goals:

1. Maintain the flow conveyance capacity of Valley Water (VW) channels and facilities.
2. Maintain the structural and functional integrity of VW facilities.

Program Objectives

1. Remove necessary sediment to provide flow conveyance and safety while maintaining habitat functions of creeks;
2. Manage vegetation for flow conveyance and safety while maintaining the habitat functions of creeks, channels and other VW facilities, and to allow levee inspections and maintenance access;

Program Objectives (cont'd)

3. Stabilize stream and channel beds and banks to protect existing infrastructure, maintain public safety, reduce sediment loading, protect water quality and protect habitat values; and
4. Avoid, minimize or mitigate impacts on the environment by identifying when maintenance work is necessary and incorporating stream stewardship measures to reduce potential impacts and enhance conditions where possible.

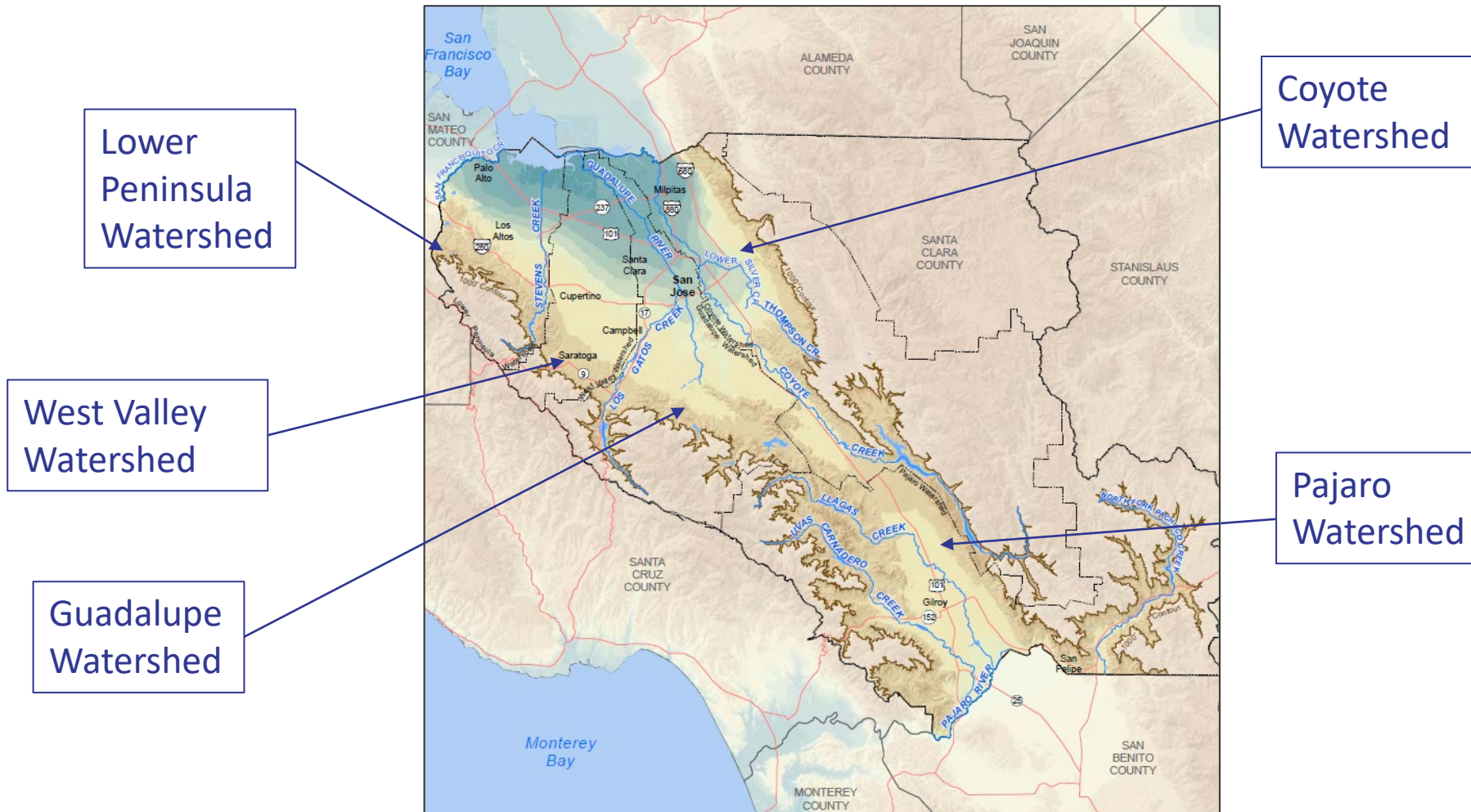
Valley Water Board of Directors' Ends Policies

Maintenance activities are conducted to meet the following Ends Policies:

- **E-3:** Natural flood protection is provided to reduce and improve health and safety for residents, businesses, and visitors now and into the future; and
- **E-4:** Water resources stewardship protects and enhances ecosystem health.

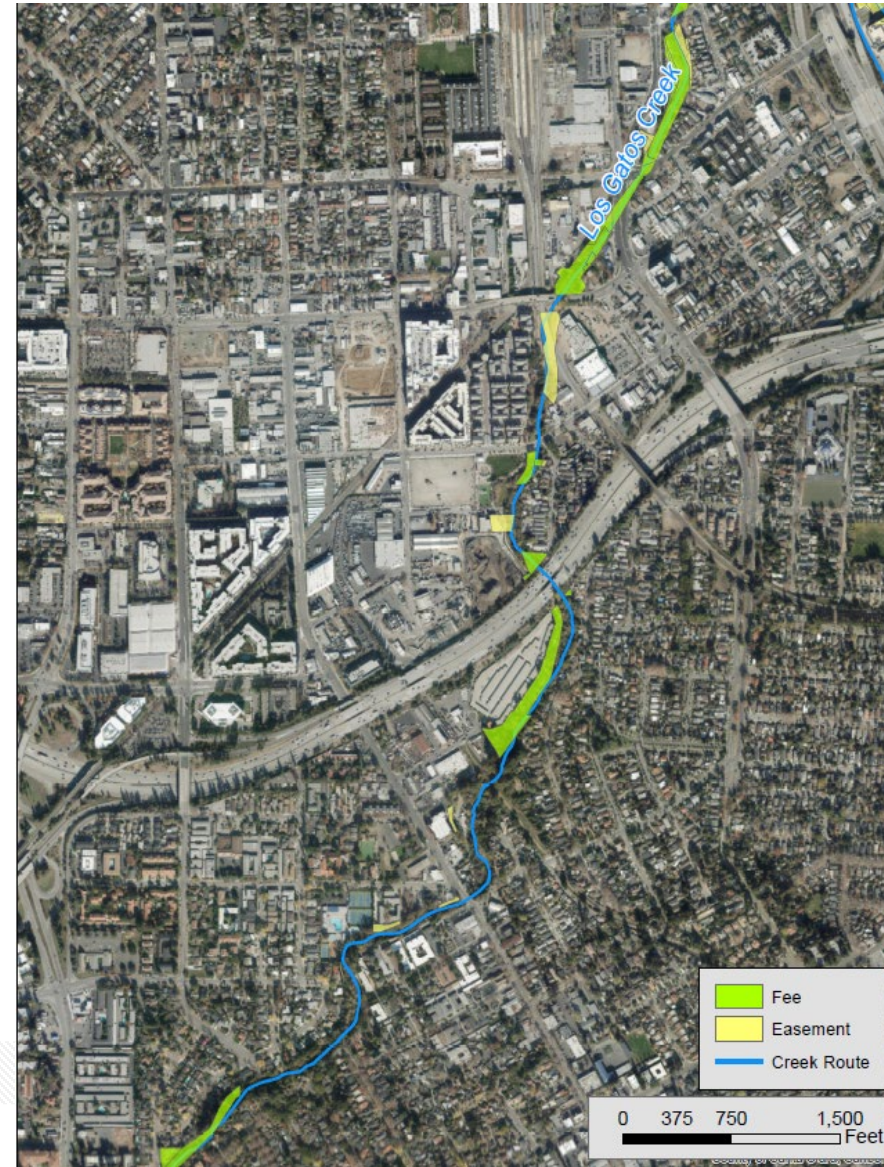
Program Area

11



Maintenance Limited to VW's Fee and Easement Areas

- Ex. map of VW's fee and easement areas on lower Los Gatos Creek in central San Jose.

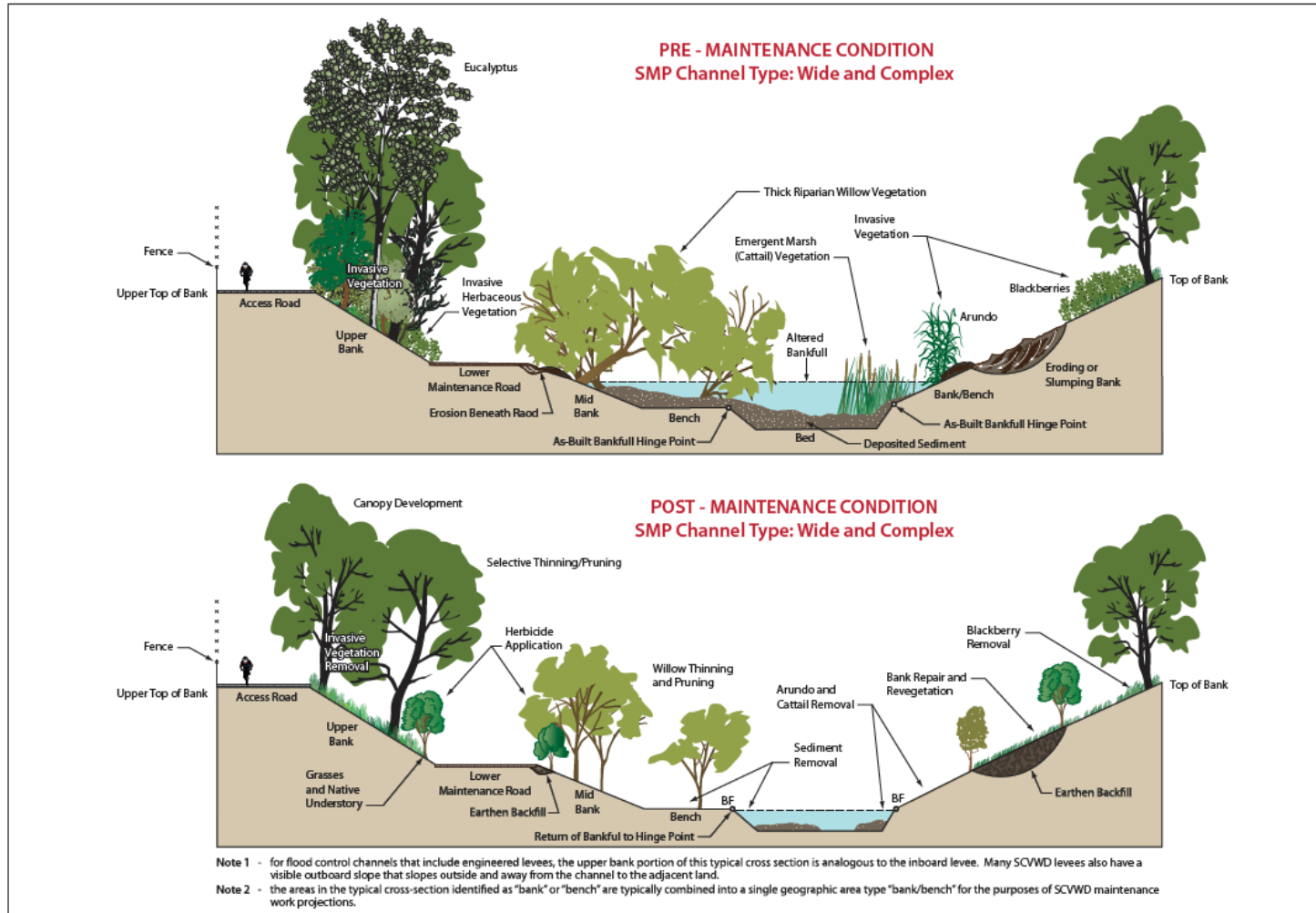


SMP Activities

Type	Description
Sediment Removal	Remove sediment from channels and associated facilities (debris basins, culverts, bridges, tide gates, flap gates, stream gauge stations) to restore floodwater conveyance capacity, ensure proper channel/facility function.
Vegetation Management	Prune and thin vegetation along creeks. Also includes grass mowing/discing, snag and hazard removals, herbicide application, invasive plant removal, and hazardous tree management .
Bank Stabilization	Repair, stabilization and erosion control activities on slumped and eroded stream banks and levees. Includes erosion protection work and multiple repair methods.
Management of Animal Conflicts	Biological control, site alterations (levee compaction, filling burrows, physical barriers), bird nest deterrence, live trapping, and chemical control.
Minor Maintenance Activities	Maintenance of revegetation sites, fence and structure repairs, minor grading to improve drainage or repair existing maintenance roads, graffiti removal, trash removal, removal of obstructions or other blockages at structures, large woody debris management, routine work at maintenance yards, and trash boom installation/maintenance.*

***Bold** text indicates new activities

Overview of SMP Activities



Sediment Removal Activities

15

Before



After



Sediment removal activities along San Tomas Aquino Creek at Westmont Debris Basin.

Sediment Removal Activities

16

Before



After



Sediment removal activities along Ross Creek and access ramp.

Sediment Removal Activities

17

Before



After



Sediment removal activities along Berryessa Creek downstream of Piedmont Rd.

Vegetation Management Activities

18



Hand removal



Pruning with pole saw



Mechanical mowing



In-stream vegetation management
– mechanical removal

Vegetation Management Activities

19



Herbicide application and cut stump treatment



Goat grazing

Bank Stabilization Activities

20

Before



After



Bank repair activities along Golf Creek.

Bank Stabilization Activities

21

Before



After



Bank repair activities along Regnart Creek.



Bank repair activities on Ross Creek
at Briar Glen Dr.

Management of Animal Conflicts

22

Before



After



Burrowing animal levee repair work completed along Guadalupe River.

Minor Maintenance and Large Woody Debris

23



Example fence in need of repair.

Trash removal on Coyote Creek.



Fallen tree requiring removal from Guadalupe River.

Program BMPs

SMP BMPs developed to avoid/minimize stream maintenance activity impacts.

BMP Number	BMP Title	BMP Description
GEN-17	Employee/Contractor Training	All appropriate Valley Water staff and contractors will receive annual training on Stream Maintenance Program BMPs. The training will also include an overview of special-status species identification and habitat requirements. Valley Water staff and contractors will receive fact sheets to assist with in-the-field identification of special-status species and their habitats.
GEN-19	Work Site Housekeeping	<ol style="list-style-type: none"> 1. Valley Water employees and contractors will maintain the work site in neat and orderly conditions on a daily basis, and will leave the site in a neat, clean, and orderly condition when work is complete. 2. Slash, sawdust, cuttings, etc. will be removed to clear the site of vegetation debris. As needed, paved access roads and trails will be swept and cleared of any residual vegetation or dirt resulting from the maintenance activity. 3. For activities that last more than one day, materials or equipment left on the site overnight will be stored as inconspicuously as possible, and will be neatly arranged. Any materials and equipment left on the site overnight will be stored to avoid erosion, leaks, or other potential impacts to water quality (see BMPs GEN-24). 4. Valley Water's maintenance crews are responsible for properly removing and disposing of all debris incurred as a result of construction within 72 hours of project completion...
GEN-20	Erosion and Sediment Control Measures	<ol style="list-style-type: none"> 1. Soils exposed due to maintenance activities will be seeded and stabilized using hydroseeding, straw placement, mulching, and/or erosion control fabric. These measures will be implemented such that the site is stabilized and water quality protected prior to significant rainfall. The channel bed and areas below the Ordinary High Water Mark (OHWM) are exempt from this BMP. 2. The preference for erosion control fabrics will be to consist of natural fibers; however, steeper slopes and areas that are highly erodible may require more structured erosion control methods. No non-porous fabric will be used as part of a permanent erosion control approach. Plastic sheeting may be used to temporarily protect a slope from runoff, but only if there are no indications that special-status species would be impacted by the application...

Program BMPs (cont'd)

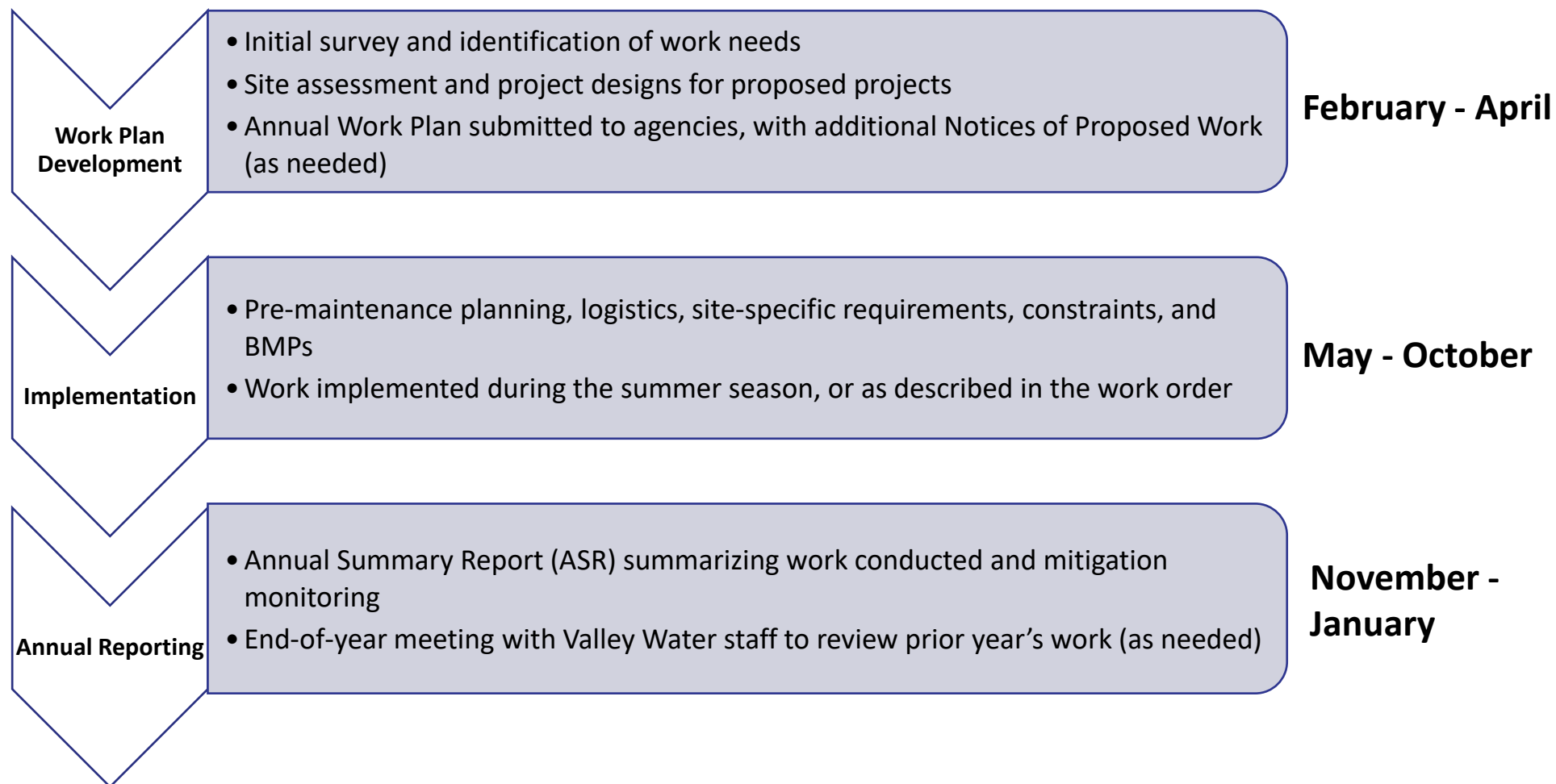
SMP BMPs developed to avoid/minimize impacts on cultural resources.

BMP Number	BMP Title	BMP Description
GEN-40	Discovery of Cultural Remains or Historic or Paleontological Artifacts	<p>Work in areas where remains or artifacts are found will be restricted or stopped until proper protocols are met.</p> <ol style="list-style-type: none"> 1. Work at the location of the find will halt immediately within 100 feet of the find. A “no work” zone shall be established utilizing appropriate flagging to delineate the boundary of this zone, which shall measure at least 100 feet in all directions from the find. 2. Valley Water shall retain the services of a Consulting Archaeologist or Paleontologist, who shall visit the discovery site as soon as practicable, and perform minor hand-excavation to describe the archaeological or paleontological resources present and assess the amount of disturbance. 3. The Consulting Archaeologist shall provide to Valley Water and the Corps, at a minimum, written and digital-photographic documentation of all observed materials, utilizing the guidelines for evaluating archaeological resources for the California Register of Historical Resources (CRHR) and National Register of Historic Places (NRHP). Based on the assessment, the District and Corps shall identify the CEQA and Section 106 cultural-resources compliance procedure to be implemented....
GEN-41	Review of Projects with Native Soil	<p>A cultural resources specialist will conduct a review and evaluation of those sites that would involve disturbance / excavation of native soil previously undisturbed by contemporary human activities to determine their potential for affecting significant cultural resources. The evaluation of the potential to disturb cultural resources will be based on an initial review of archival information provided by the California Historical Resources Information System/Northwest Information Center (CHRIS/NWIC) in regard to the project area based on a 0.25 mile search radius. It is recommended that this initial archival review be completed by a professional archaeologist who will be able to view confidential site location data and literature to arrive at a preliminary sensitivity determination. If necessary, a further archival record search and literature review (including a review of the Sacred Lands Inventory of the Native American Heritage Commission); and a field inventory of the project area will be conducted to determine the presence/absence of surface cultural materials associated with either prehistoric or historic occupation...</p>

SMP Website and VW News Blog

- Specific information on individual maintenance projects available at: <https://www.valleywater.org/project-updates/stream-maintenance-program>
- Additional information available on Santa Clara Valley Water News blog: <https://valleywaternews.org/2021/09/30/photo-slideshow-valley-water-performs-annual-work-in-creeks-for-flood-protection/>

Annual SMP Work Sequence



4. SMP-3 Updates

- **Expand activity descriptions** to include work at maintenance yards, hazardous tree management, and trash boom installation/maintenance.
- **Modify work limits for:** tree removal and pruning/limbing activities, revise the list of herbicides and surfactants, and bank repairs.
- **Update Program BMPs** to reflect lessons learned and updated regulatory requirements.
- **Expand Program mitigation options** to include: trash and encampment clean-up activities & payment of impact fees through Santa Clara Valley Habitat Plan.
- **Expand permanent mitigation areas (PMAs)** originally established in SMP-1 to offset impacts to jurisdictional waters/wetlands not under existing PMAs.

5. SMP-3 Timeline

- Administrative Draft Manual: Spring 2022
- CEQA Scoping: Spring 2022
- Public Draft SMP-3 Manual and Draft EIR: Spring 2023
- Final SMP-3 Manual and Final EIR: Fall 2023
- Permitting: Spring 2022-Fall 2023

6. Stakeholder Feedback / Comments

30

- Click **Raise Hand** in Zoom to provide comments today.
- Comments may also be submitted via email to: BWilliams@valleywater.org



QUESTIONS





Valley Water

Clean Water • Healthy Environment • Flood Protection

Large Woody Debris Management

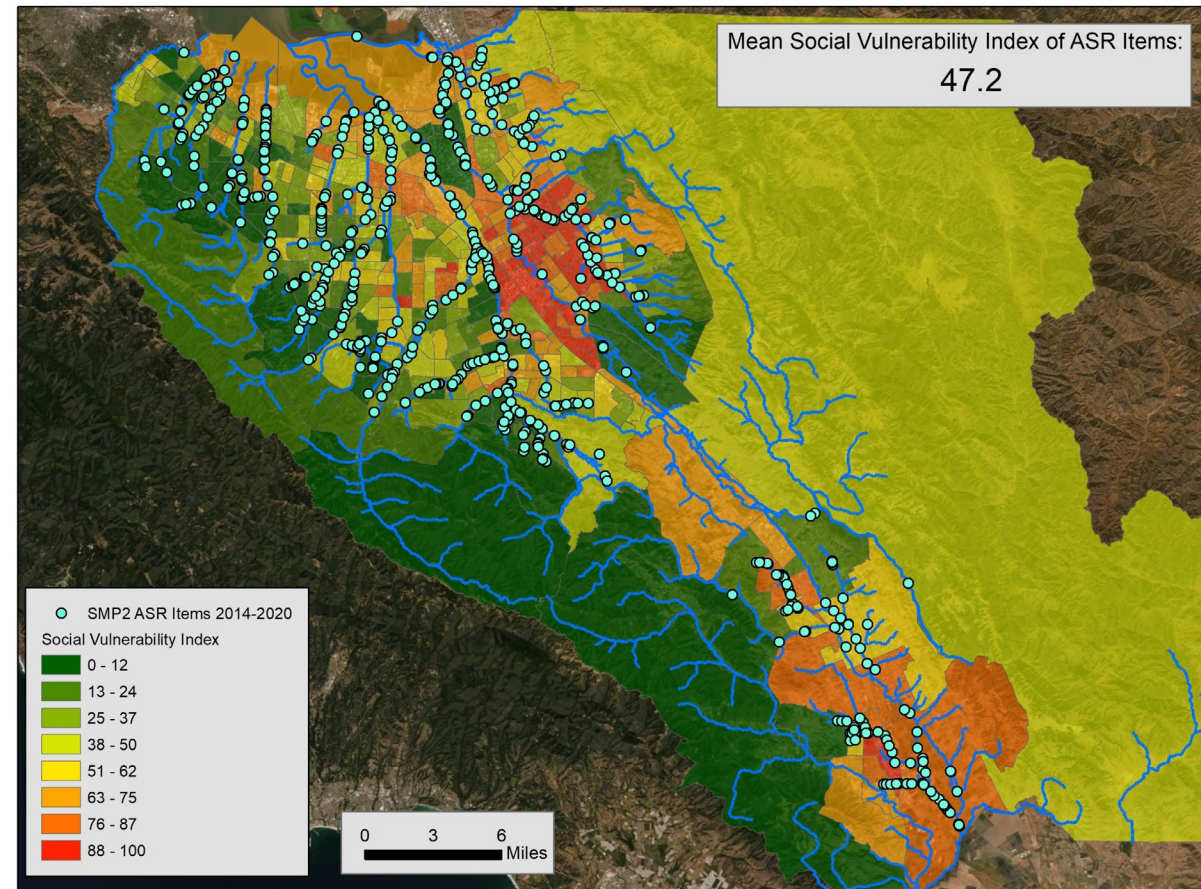
33



LWD structure installed on Los Gatos Creek.

SMP Sites vs. Social Vulnerability Index 34

- Maintenance activities conducted across Santa Clara County to maintain flow conveyance capacity of VW facilities and thereby reduce risk of flooding for public safety.
- Average Social Vulnerability Index for 2014-2020 SMP maintenance activities: **47.2**



Valley Water Fee and Easement on Coyote Creek

35

