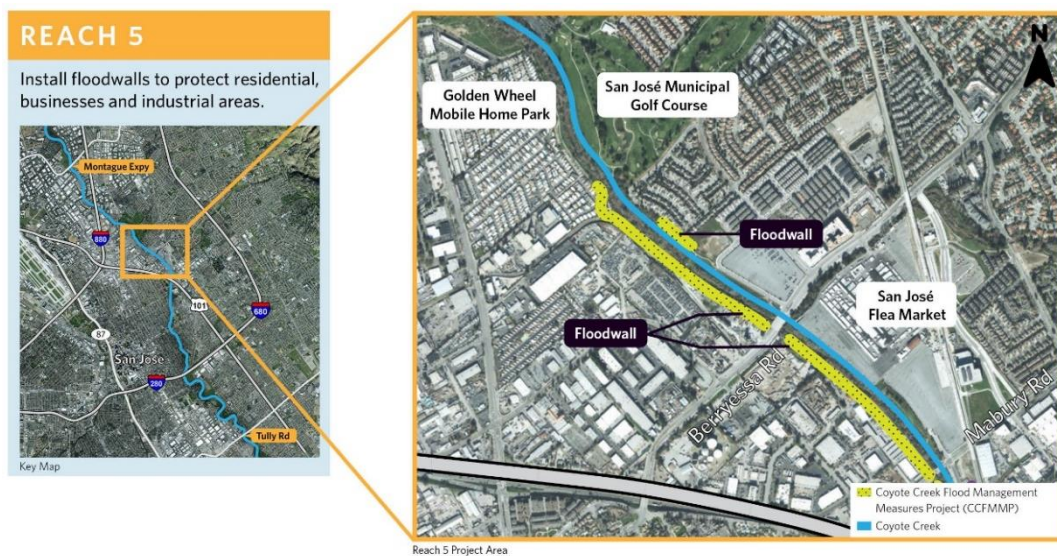


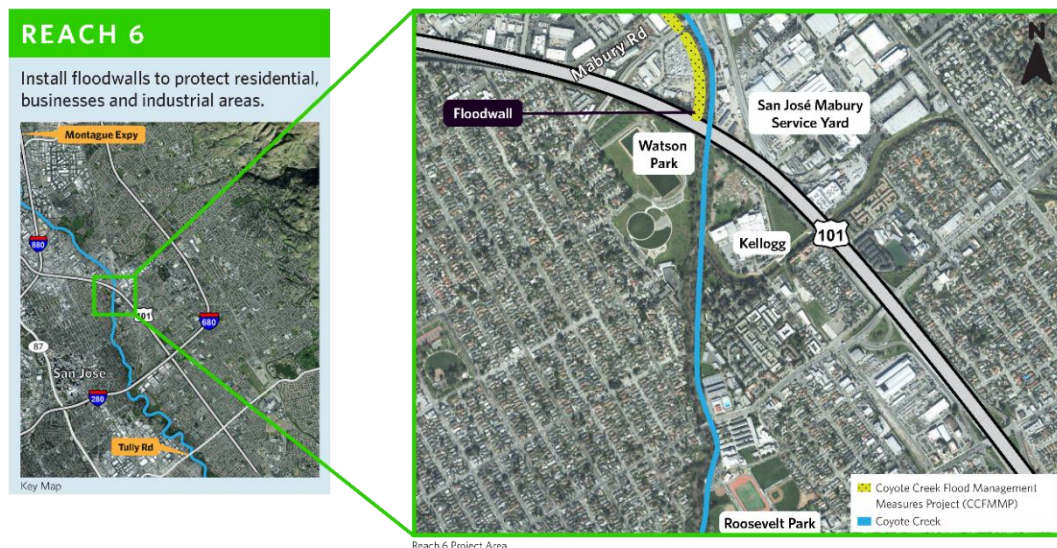
Coyote Creek Flood Management Measures Project (CCFMMP/Project)

Contractor Open House

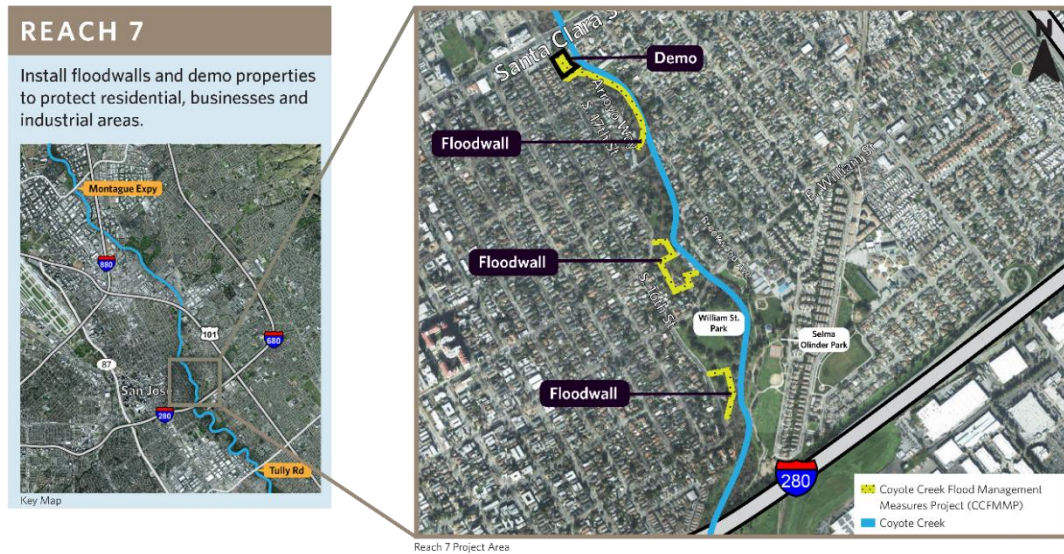
The purpose of the Project is to construct improvements along approximately four miles of Coyote Creek, between Old Oakland Road and Highway 280, in San Jose. The primary objective, when combined with Coyote Creek Flood Protection Project (CCFPP), is to provide protection from floods up to the level that occurred on February 21, 2017, equivalent to approximately a 5% flood (20-year event). The Project is under the Federal Energy Regulatory Commission (FERC) Order Compliance Project (FOCP). Project completion is required before the Anderson Dam Tunnel Project is operational, which is expected in August 2024. The Project consists of approximately 8,700 feet of floodwalls and the demolition of three structures. Project construction is outside of the creek channel.



In Reach 5, two of the floodwalls are approximately 2,300 feet long each and the third floodwall is approximately 300 feet long.



The floodwall in Reach 6 is approximately 1,200 feet long.



The floodwall lengths in Reach 7 are approximately 1,100 feet, 1,000 feet and 500 feet. There are three structures that will be demolished.

There are a few Project specific considerations for contractor awareness prior to and during construction.

Portions of the Project area are currently occupied by unhoused encampments. Valley Water is partnering with the City of San Jose to abate the encampments in coordination with contractor mobilization.

The Project will utilize the press-in method for installation of sheet piles.

There are site specific constraints including access behind commercial and residential properties and along the creek bank. Project construction is outside of the creek channel.

There are schedule constraints due to Project completion tied to operation of the Anderson Dam Tunnel Project (ADTP).

The Project features are within close proximity to homes and other structures which will need vibration monitoring.

The general scope of construction activities includes, but not limited to, (1) installation of sheet piles using a press-in method, (2) demolition, (3) vegetation and tree trimming and removal, (4) metal fabrications, (5) flood gates and doors, (6) earthwork, (7) joints and waterstops in concrete, (8) cast-in-place concrete and reinforcement, and (9) landscape establishment.