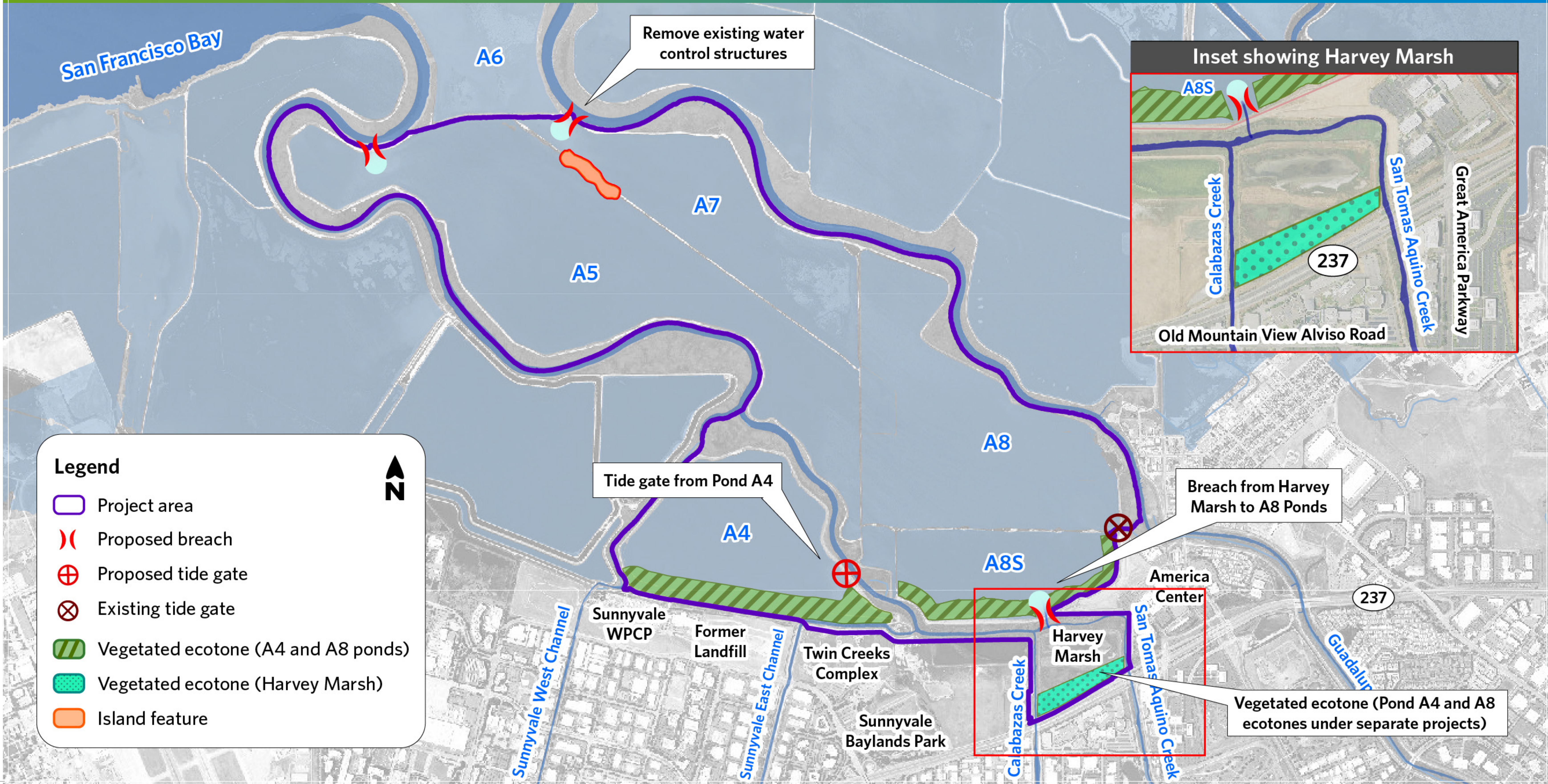


# CALABAZAS/SAN TOMAS AQUINO CREEK-MARSH CONNECTION PROJECT

## Alternative 1 - Minimum Tidal Connectivity



# CALABAZAS/SAN TOMAS AQUINO CREEK-MARSH CONNECTION PROJECT

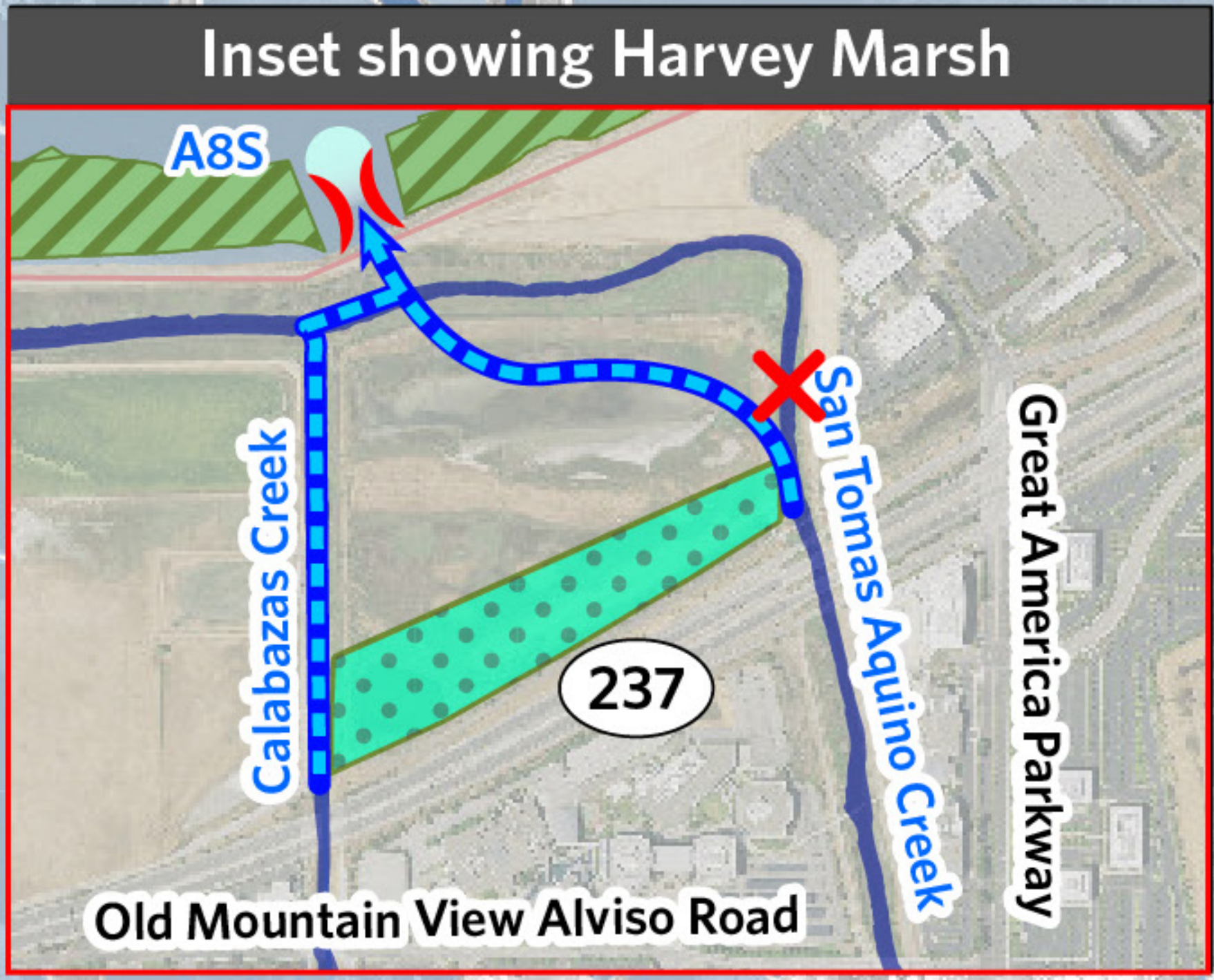
## Alternative 2 - Intermediate Tidal Connectivity, Alviso Slough Breaches



San Francisco Bay

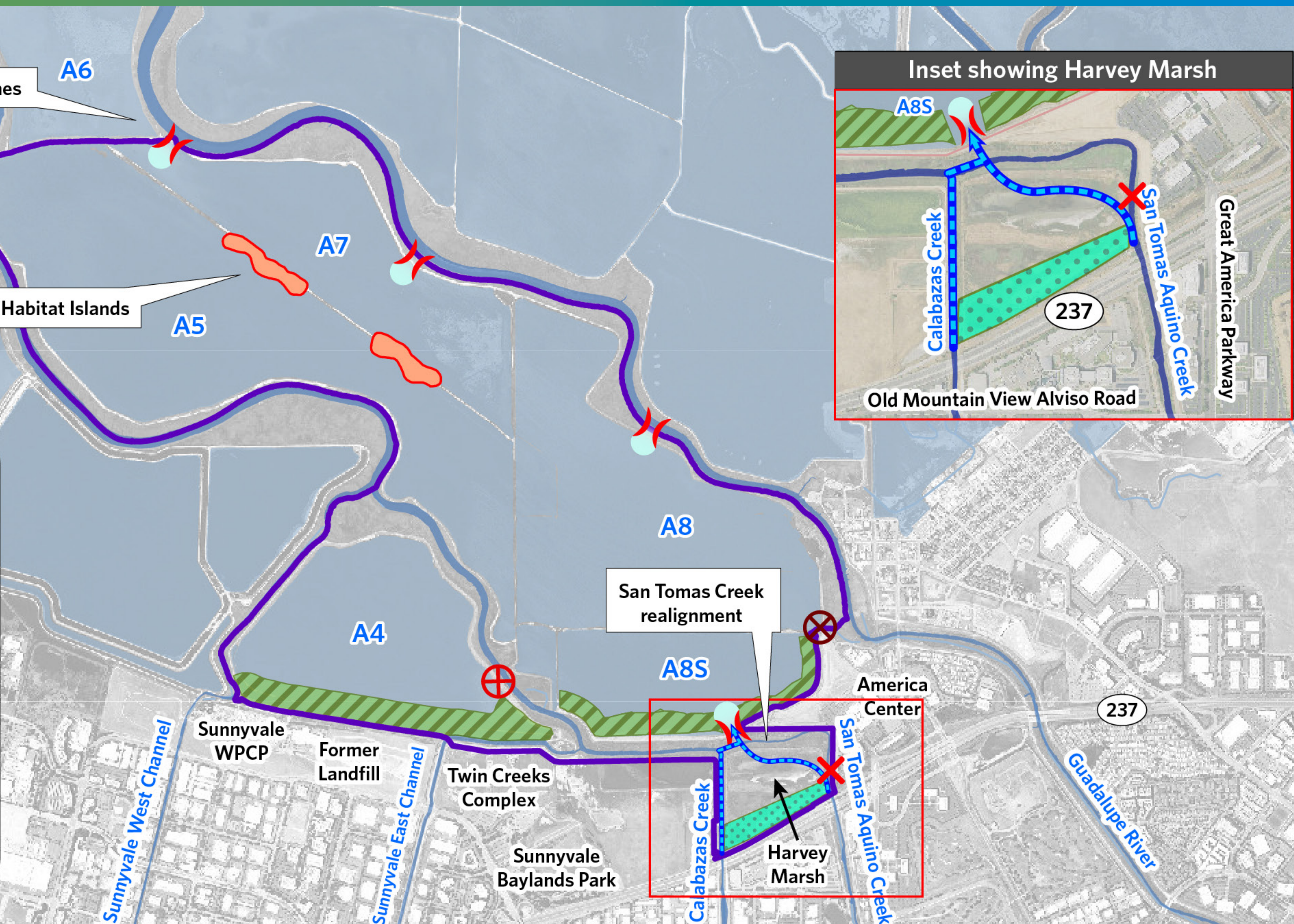
Alviso Slough breaches A6

Nesting Habitat Islands A5

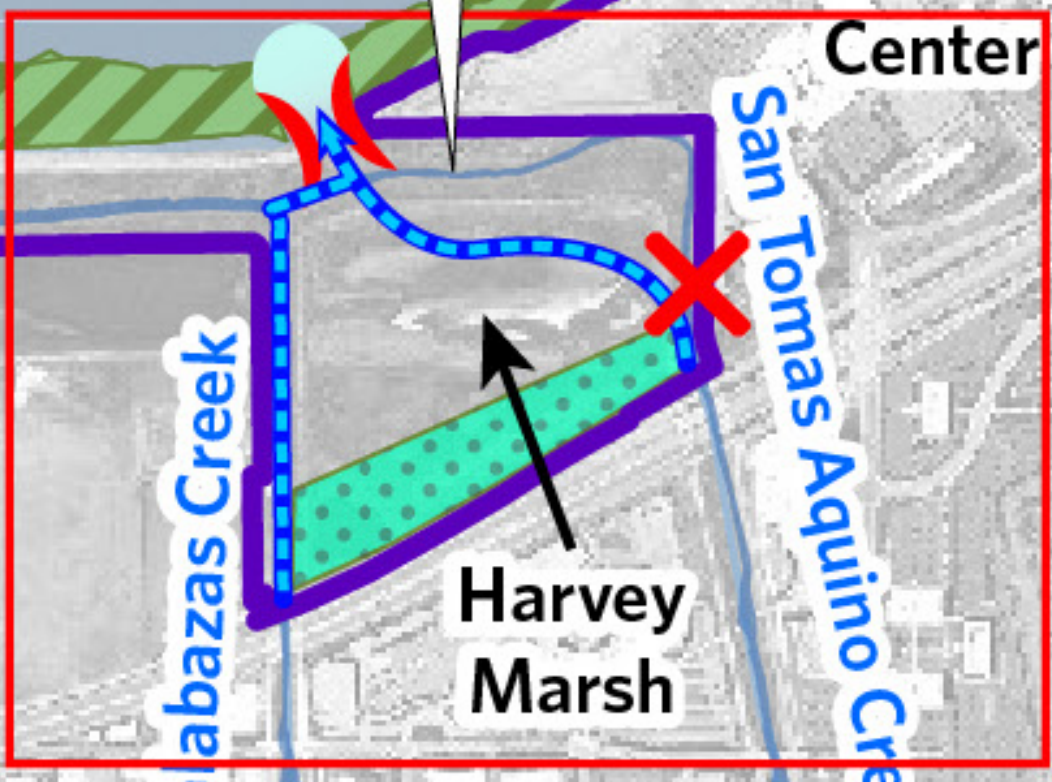


### Legend

- Project area
- Proposed breach
- Proposed tide gate
- Existing tide gate
- Ditch block
- Vegetated ecotone (A4 and A8 ponds)
- Vegetated ecotone (Harvey Marsh)
- Island feature
- Creek realignment

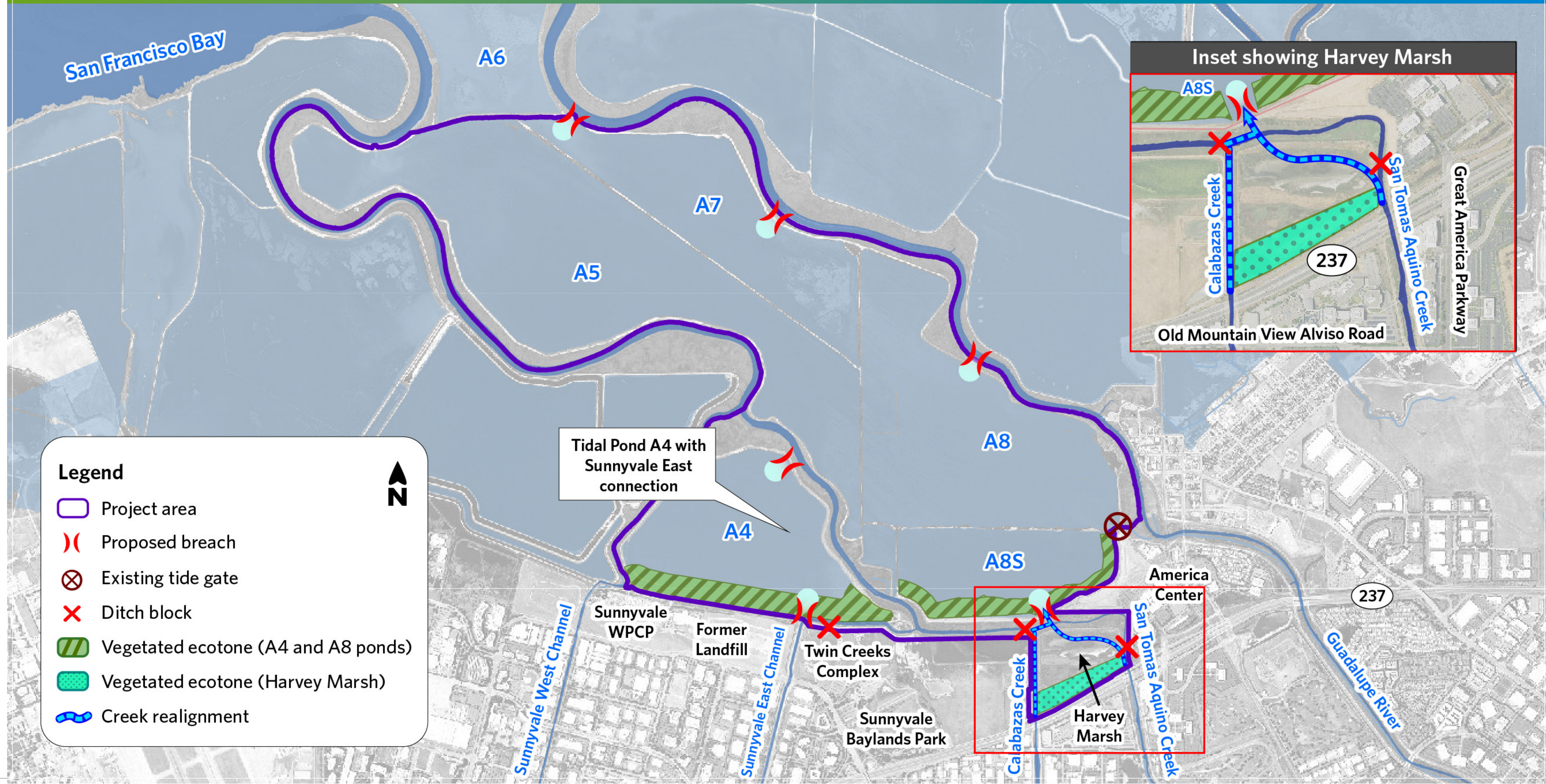


San Tomas Creek realignment



# CALABAZAS/SAN TOMAS AQUINO CREEK-MARSH CONNECTION PROJECT

## Alternative 3 - Intermediate Tidal Connectivity, Pond A4 Breaches



# CALABAZAS/SAN TOMAS AQUINO CREEK-MARSH CONNECTION PROJECT

## Alternative 4 - Max. Sediment Transport, Guadalupe Slough Breaches



San Francisco Bay

A6

A7

A5

A8

A4

A8S

**Inset showing Harvey Marsh**

A8S

Calabazas Creek

237

San Tomas Aquino Creek

Great America Parkway

Old Mountain View Alviso Road

**Legend**

- Project area
- Proposed breach
- Existing tide gate
- Ditch block
- Vegetated ecotone (A4 and A8 ponds)
- Vegetated ecotone (Harvey Marsh)
- Island feature
- Creek realignment



Guadalupe Slough breaches

Sunnyvale West Channel

Sunnyvale WPCP

Former Landfill

Sunnyvale East Channel

Twin Creeks Complex

Sunnyvale Baylands Park

Calabazas Creek

Harvey Marsh

America Center

San Tomas Aquino Creek

San Tomas Creek berms and ditch blocks

237

Guadalupe River

# CALABAZAS/SAN TOMAS AQUINO CREEK-MARSH CONNECTION PROJECT

## Alternative 5 - Maximum Tidal Connectivity



### Legend

- Project area
  - Proposed breach
  - Ditch block
  - Vegetated ecotone (A4 and A8 ponds)
  - Vegetated ecotone (Harvey Marsh)
  - Island feature
  - Wetland bench feature
  - Creek realignment
- N