




Pollinator Support in Neighborhood Parks

Dan Greeley, Program Manager
City of San Jose

Rhonda Nourse, Executive Director
Happy Hollow Foundation





City of San Jose –
Department of Parks,
Recreation and
Neighborhood Services

Who are we?



PRNS – Strategic Plan and Guiding Principles

GUIDING PRINCIPLES

STEWARDSHIP	NATURE	EQUITY & ACCESS	IDENTITY	PUBLIC LIFE
We Take Care of What We Have and Invest for the Future	We Protect, Preserve and Promote Natural Areas for All People	We Embrace People of All Ages, Cultures and Abilities	We Aim to be a Premier Parks, Recreation and Neighborhood Services System	We Promote Community Spaces for a Safe, Fun and Healthy San José



Happy Hollow Park & Zoo

- Progress for Pollinators Grant program
- Backyard Habitat Project



PROGRESS FOR POLLINATORS *Grant*



APPLY NOW

UP TO \$2,500 PER PROJECT

DEADLINE MAR. 1

HAPPY HOLLOW FOUNDATION

HAPPY HOLLOW PARK & ZOO

FOR THE
CITY OF
COLUMBIA, MISSISSIPPI

The graphic features a central image of a hummingbird hovering over a large orange daisy flower. To the left, a circular inset shows a monarch butterfly and bees on a purple thistle. To the right, another circular inset shows a bee on a purple flower. The text is arranged in a vertical flow, with the grant name at the top, followed by the call to action, the deadline, and the logos for the Happy Hollow Foundation and Happy Hollow Park & Zoo at the bottom.

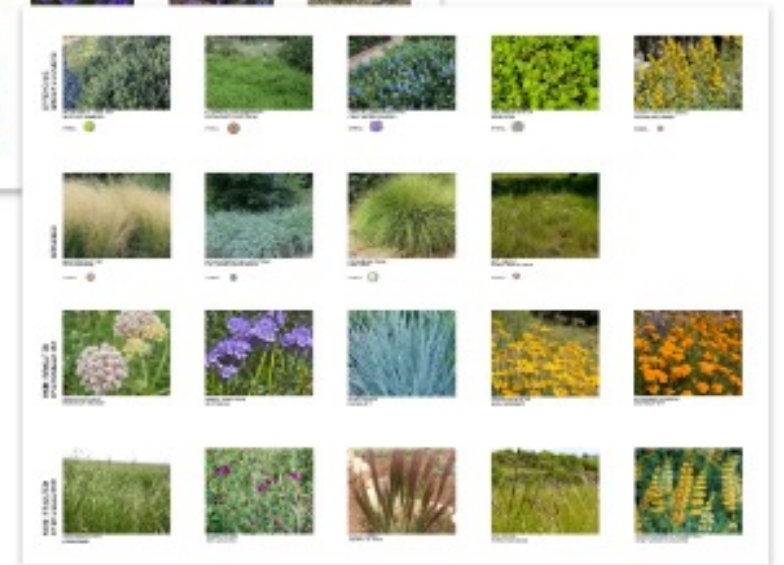
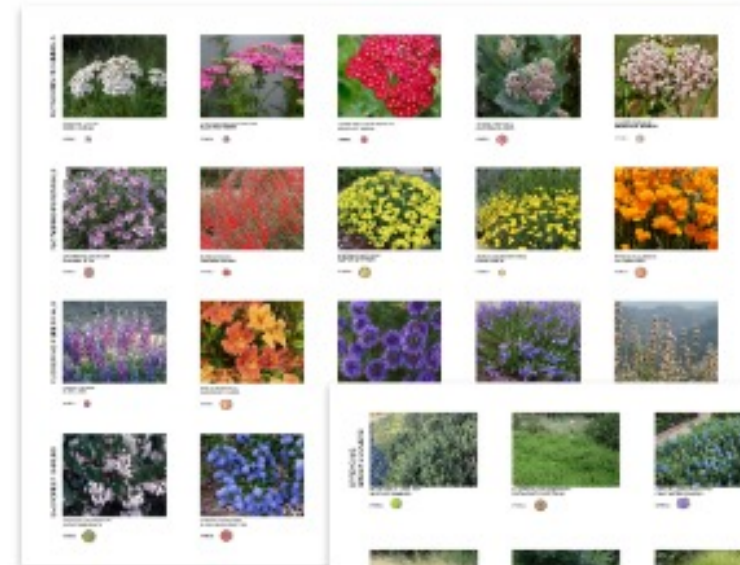
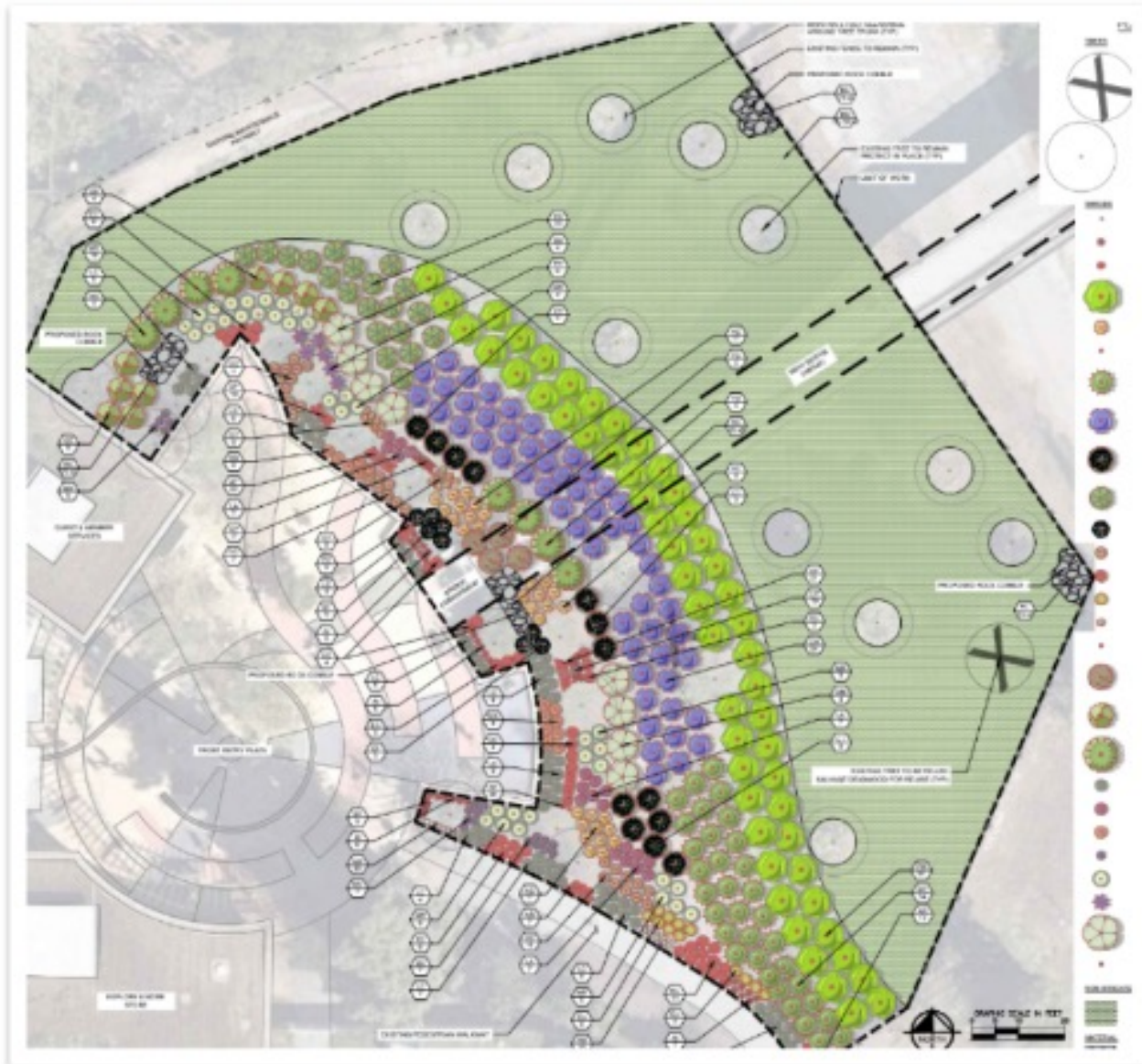
Monarch Meadow Capital Project

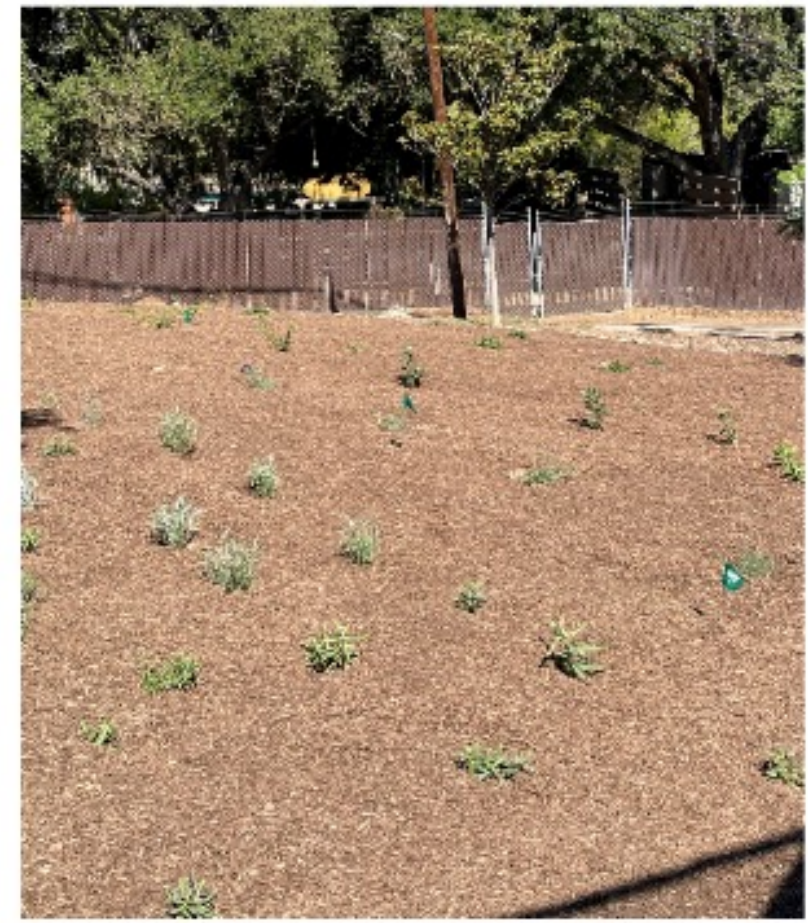


**HAPPY
HOLLOW**
PARK & ZOO
SAN JOSE
PARKS, RECREATION &
NEIGHBORHOOD SERVICES

**HAPPY
HOLLOW**
FOUNDATION

Monarch Meadow Planning





Before & After

Monarch Meadow
AT HAPPY HOLLOW



Monarch Meadow
AT HAPPY HOLLOW



Monarch Meadow By the Numbers

Planning Team	10
Months in Planning	12
Volunteers	210
Cubic Yards of Mulch	400
Plant Count	745
Volunteer Hours	3,319
In Kind Goods	\$38,259
In Kind Services	\$175,500++



Project Challenges

1. Site conditions (slope, soil condition, lack of water)
2. Materials (plant selection, mulch, irrigation)
3. Rate of Success (quality of planting, critters, weather)
4. Maintenance (weeds, watering, plant replacement)



Questions & Discussion

Monarch Meadow