



Laws and Landscape: What's New

Linda Vo

California Water Efficiency Partnership

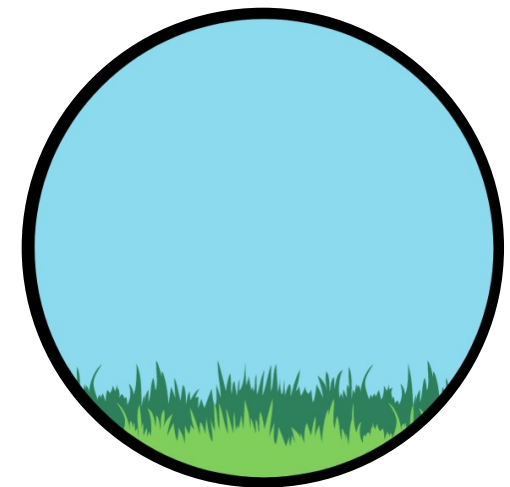
What we'll cover:



**Governor's Water
Supply Strategy**



**Emergency Drought
Regulations
& Non-Functional Turf**



**AB 2142: Tax
Exemption for
Turf Replacement**

Governor's Water Supply Strategy





Strategy for a Hotter, Drier CA

- Published in August 2022
- 4 major strategies to tackle a 10% reduction in CA's overall water supply by 2040
- Not a law

Targets state funds (\$) with an emphasis on supporting local conservation efforts



Strategy #3 calls for:

1. **\$175 million** earmarked for **turf replacement** and other water conservation efforts
2. Convert **500 million square feet** of ornamental turf by 2030
3. DWR will establish a **grant program** to support local efforts to replace ornamental turf with drought-tolerant landscaping
4. Where schools and parks require turf, make turf **irrigation** and **maintenance** more **efficient**, with a focus on underserved communities



What this means for landscapers:

- Landscape transformation is driven from the top down and the bottom up!
- Grant money coming for underserved communities in 2023.
- How to prepare: Consider qualifying areas, grant writing resources, project team, and partnerships.

Emergency Drought Regulations





Prevention of Wasteful Water Uses

- Re-adopted and effective through Dec. 2023
- Commercial non-functional turf irrigation ban through June 2023
- Fines = \$500 per day

Statewide application NO exceptions for golf courses and other recreational facilities



My activities

 New folder

 New activity



Activities

Name

Count



No items in My folders

What is “non-functional turf” or “decorative grass”?

Non-functional turf is a ground cover surface of mowed grass that is ornamental and not otherwise used for human recreation purposes. Non-functional turf does not include school fields, sports fields, and areas regularly used for civic or community events. To use more everyday language, this document intends for “decorative grass” to have the same meaning that non-functional turf does in the regulation.



This regulation prohibits:

1. Watering “**decorative grass**” on commercial properties (through June 2023)
2. Overwatering yards generating “**dry runoff**”
3. Watering grass within **48 hours** after rainfall
4. Using potable water to irrigate grass on **public street medians** or landscaped areas between the street and the sidewalk
5. Using potable water for decorative **fountains** or filling artificial **lakes** or **ponds** (with some exceptions)
6. **HOAs** from **fining residents** who cut back on watering their lawns or other landscaping



Non-Functional Turf Irrigation Ban

- Irrigation ban applies to **potable water** use on NFT at Commercial, Industrial, and Institutional (CII) sites and some HOA landscaped areas.
- Some turf at **cemeteries, parks** and **golf courses** could be considered non-functional.
- Irrigating NFT with **recycled water** is permitted.
- Irrigating turf areas used for **recreation** and **community activities** is still permitted.
- Watering **trees** and other **plants** is still permitted.

How to Protect Trees

Trees planted in turf have some unique challenges:

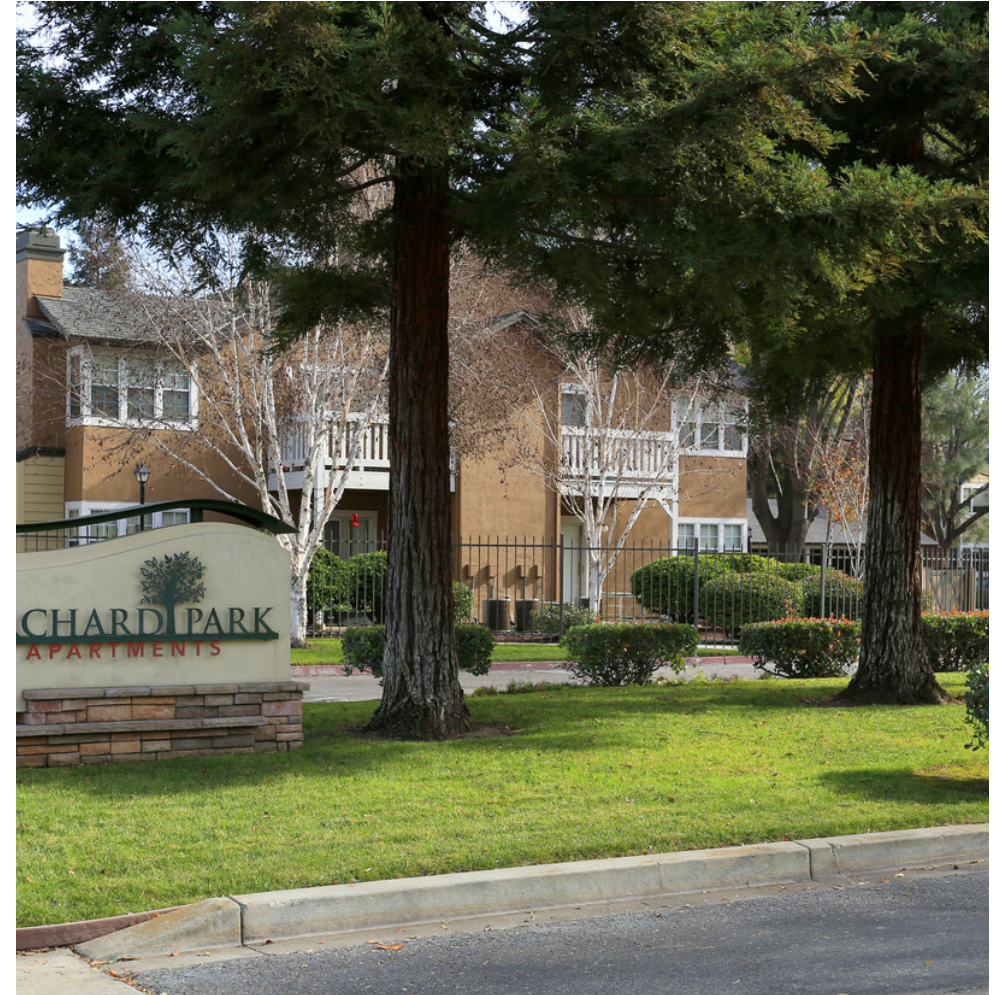
1. Improper tree selection
2. Overall poor irrigation management
3. Shallow root systems



How to Protect Trees

Tips from Save our Water, ReLeaf, and Canopy

- ✓ **Mature Trees**: Deeply and slowly water mature trees 1 to 2 times per month. Do not water close to the trunk.
- ✓ Use a soaker hose or drip system.
- ✓ **Young Trees**: Apply 5 gallons, 2 – 4 times per week.
- ✓ Mulch, Mulch, MULCH!
- ✓ Let the soil dry between waterings – trees need oxygen too!
- ✓ Avoid pruning or fertilizing trees during dry seasons.

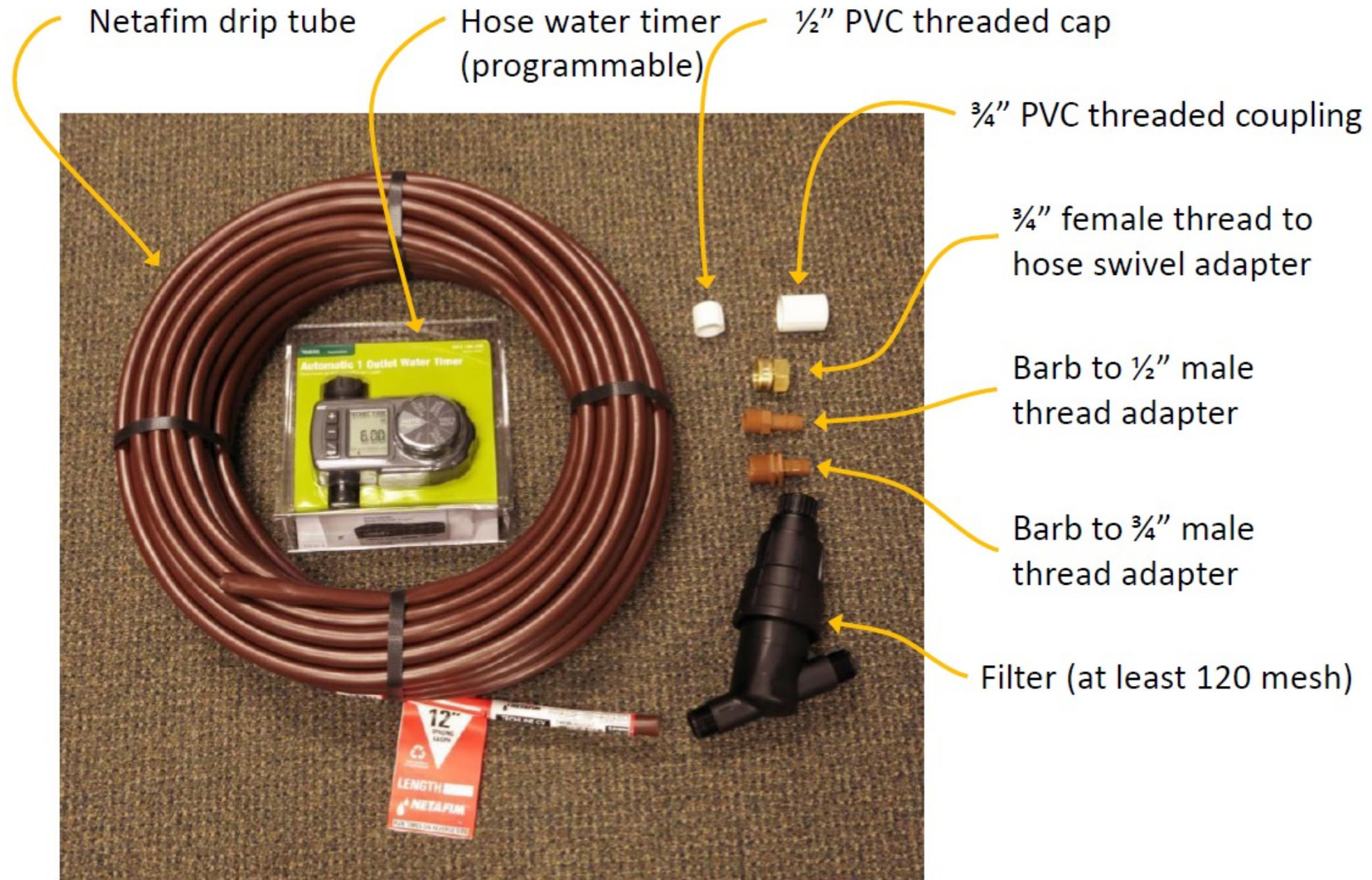


The Tree Ring Irrigation Contraption (TRIC)

- Developed by UC Davis, UCANR, and Ewing Irrigation
- 100' drip tubing is placed around the tree one foot outside the drip line in one-foot increments
- Larger or more mature trees can be irrigated with multiple drip lines connected together.
- Total cost: ~\$100 per tree
- Most of the parts for the TRIC need to be ordered online. **Do not substitute parts or materials.*
- Visit for detailed instructions:
<https://ccuh.ucdavis.edu/tric>



TRIC Parts List



Tree Ring Irrigator Contraption (TRIC) Parts List

- Netafim (0.6 gph, 12" spacing) drip tube - \$30
- Hose water timer (programmable, optional) - \$30
- ½" PVC threaded cap - \$1
- ¾" PVC threaded coupling - \$1
- ¾" female thread to hose swivel adapter - \$2
- Barb to ½" male thread adapter - \$2
- Barb to ¾" male thread adapter - \$1
- Filter (at least 120 mesh) - \$27
- 8" Hold Down Metal Wire Stake for 1/2" Drip Tubing - \$4

Total MSRP Cost = \$100.00



Activities <



My activities



My activities



New folder



New activity

Activities

Name

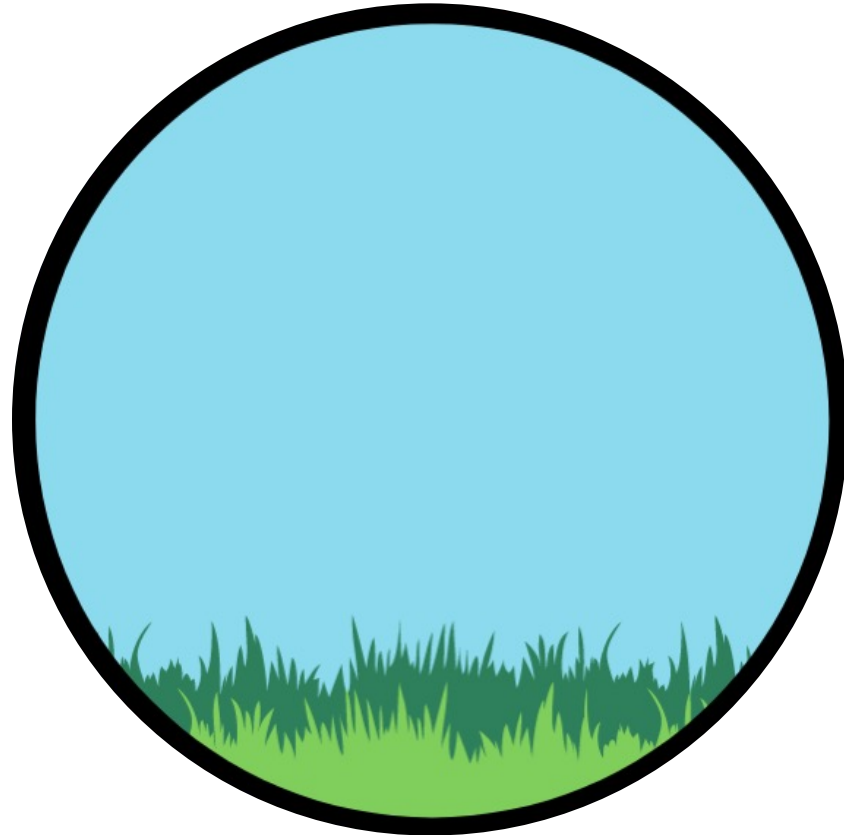
Last modified

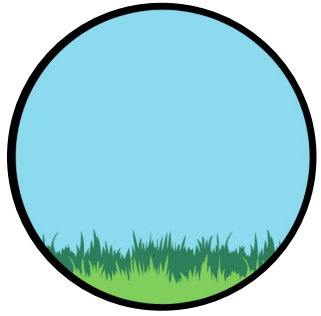
Count



No items in My folders

AB 2142: Tax Exemption for Turf Replacement

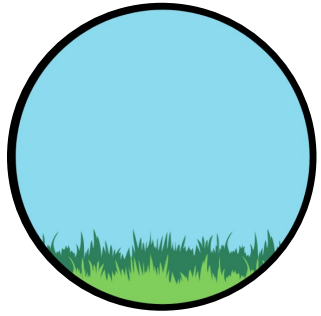




AB 2142: Tax Exemption for Turf Replacement

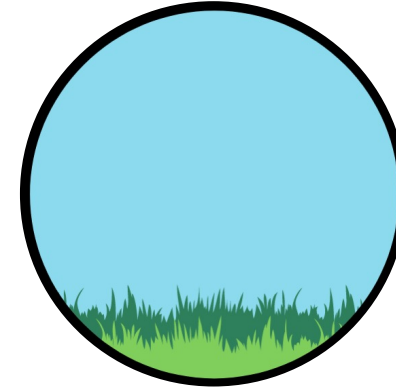
- Became effective on September 28, 2022
- Impacts tax period between January 1, 2022 – December 1, 2027

*Exempts turf replacement incentives
from state income tax*



What this means for landscapers:

- Inform your customers that local rebates are now exempt from state tax.
- Verify that the financial incentive was issued by a **public water system, local government or state agency**.
- Rebates, vouchers, and other financial incentives qualify.
- Provide customers with all necessary receipts for labor and materials.



CALIFORNIA
**WATER EFFICIENCY
PARTNERSHIP**

Thank you!

Linda Vo

linda@calwep.org