

State of the Valley's Water

Kirsten Struve, Assistant Officer
Water Supply Division, Valley Water



Drought in Santa Clara County

- **Jun 2021** – Drought responses begin
- **Sep 2022** – CII Ban on irrigation of non-functional turf
- **Dec 2022 –Jan 2023** – Record rainfall
- **April 2023** – Board rescinds water shortage emergency condition
- **June 2023** Water Conservation a Way of Life resolution adopted and permanent water waste prohibitions passed



Conservation Milestones During Last Drought



3.4 Million Sq. Ft. of Turf Converted



Water Use Dropped 25% in the Last 10 Years



20+ Water Conservation Programs Underway



On Track for Long-Term Water Savings



Robust Outreach Campaign



Drought Resources Increased



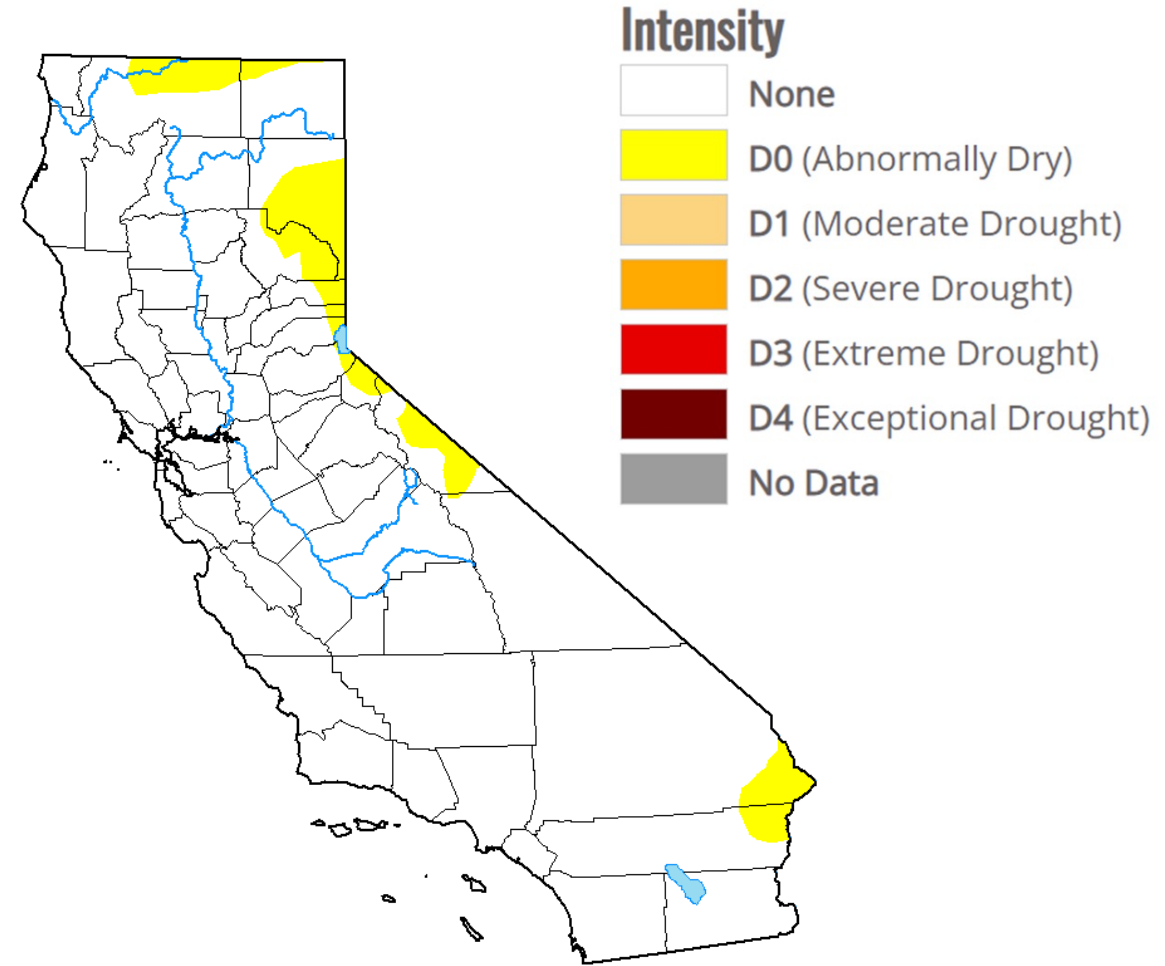
Total Water Use Down Amid Historic Population Growth

State Water Use Efficiency Legislation Background and Updates

- 2018 legislation – “Making Water Conservation a California Way of Life.”
- Indoor, Outdoor Residential, Commercial, Industrial, and Institutional (CII) Performance Measures, and Other Requirements
- CII Outdoor Example Regulations:
 1. CII Non-Functional Turf Potable Irrigation Ban
 2. CII Dedicated Irrigation Meter Conversion (or in-lieu technology)
- Final adoption expected by the end of 2024
- Members of CalWEP can access up-to-date information at calwep.org/the-framework/.

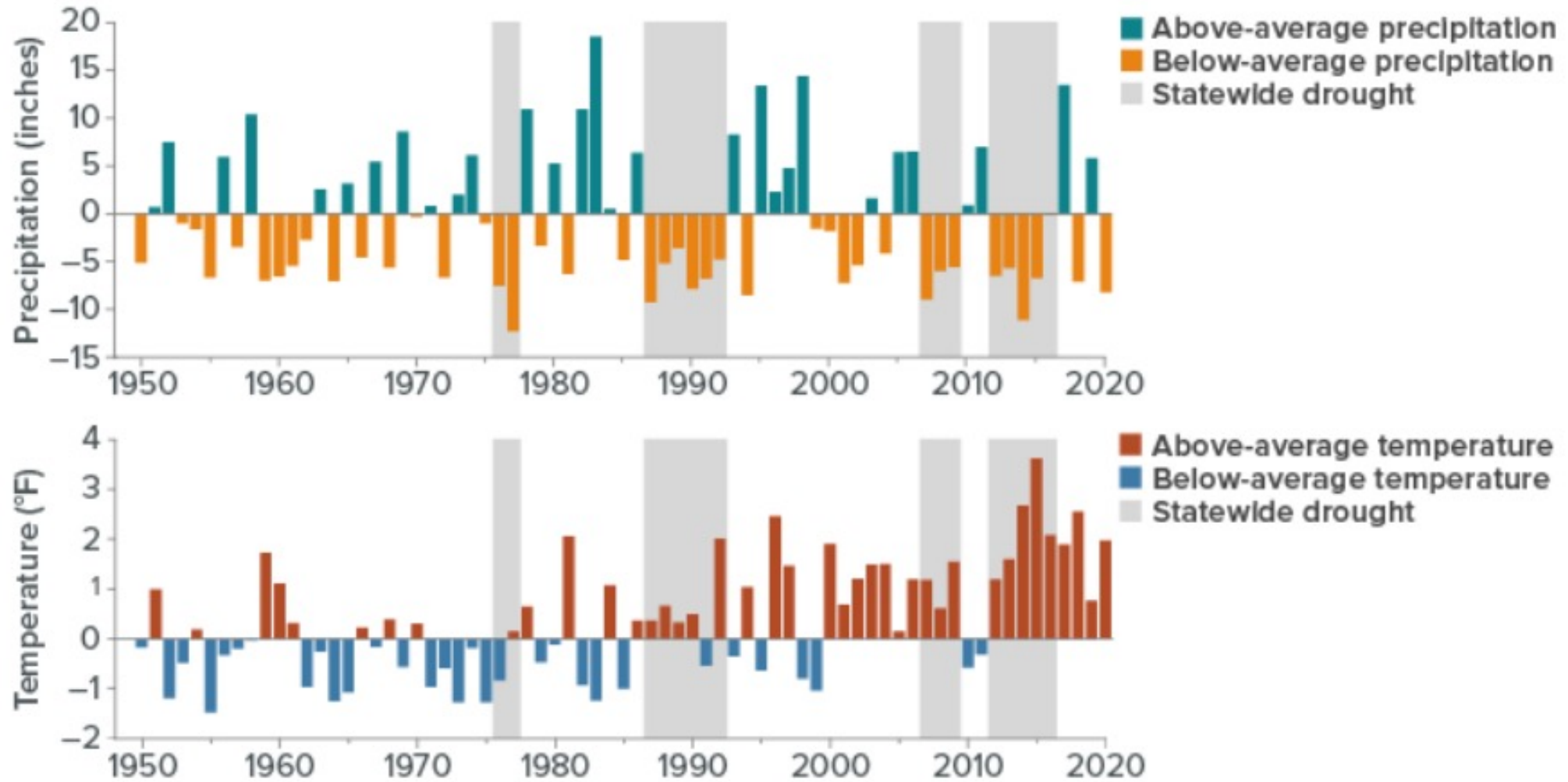
2022-2023 Precipitation Impacts

- Improvement in drought status
- Local reservoir levels increased significantly
- State snowpack
 - 2023 – Record high
 - 2024 – Near Average



US Drought Monitor, February 14, 2024

Droughts are a recurring feature of California's climate. Warming is making them worse.



SOURCE: Western Regional Climate Center [California Climate Tracker](#), DWR [California's Most Significant Droughts](#).

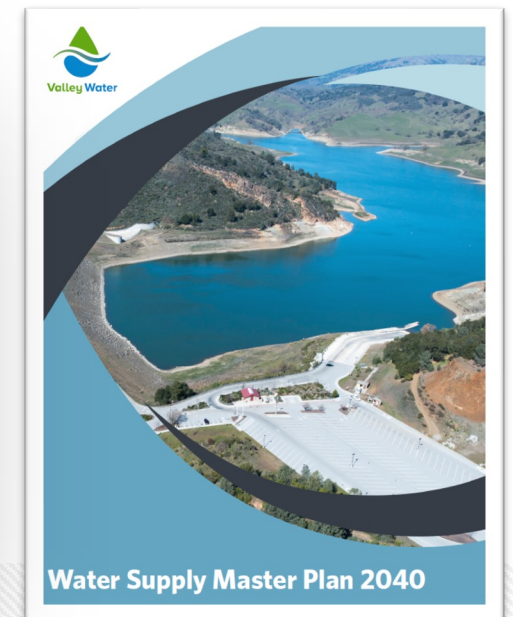
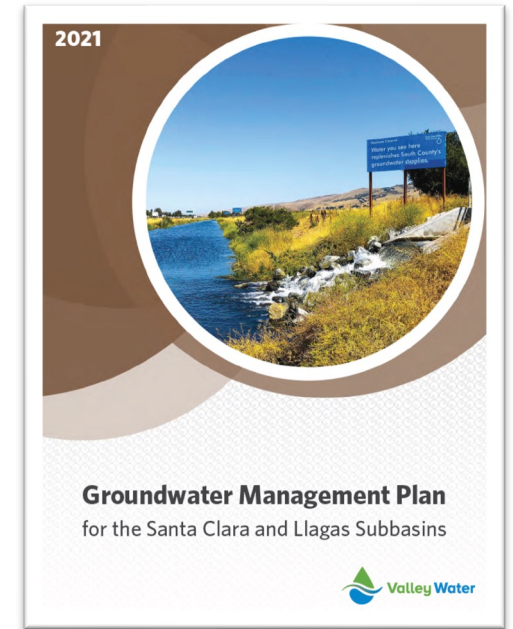
NOTES: Averages are calculated for 1950–2000. Average statewide precipitation is 24.3 inches, and average temperature is 57.2 (F).

California Climate Change Impacts



Planning for Climate Change

- Included in planning efforts
- Track State-wide and local impacts
- Working with State experts
- Following science and policy closely



A Diverse Portfolio Builds Resilience

Santa Clara County WATER SUPPLIES

Imported Water 50%
Water from the Sierra
Snowpack that melts and
fills state reservoirs

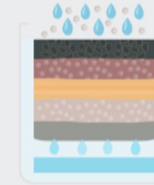
40% Delta supplies
10% Hetch Hetchy



Water Reuse 5%
Treated wastewater
used as recycled water



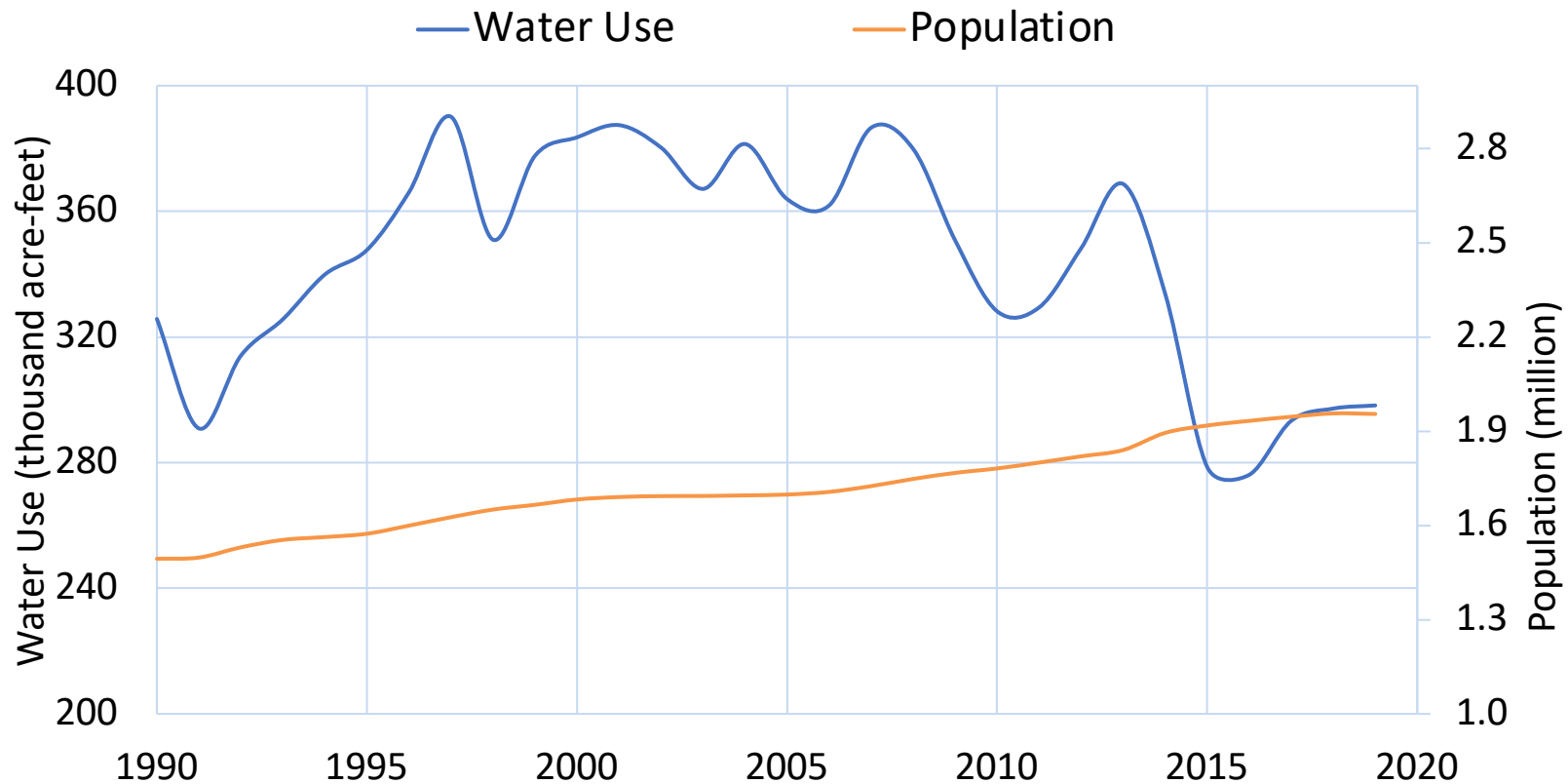
Local Water 30%
Rainwater captured in
Valley Water reservoirs and
natural groundwater



Conservation 15%
Consistent short and long-
term reductions in water
use



Demand Over Time



**Water use dropped 25%
in the last 5 years.**

2017 - 148 Gallons per person/day
2022 - 111 Gallons per person/day

The county population
increased by 25% over the
past 30 years.

Water demand has
decreased by 8% in that
time (1990-2020)

Current Water Supplies

- Imported water is typically half of our countywide supply
 - Received 100% allocations from the State Water Project and Central Valley Project for 2023
- End of 2024 Groundwater levels projected to be in Stage 1 (normal) of the Water Shortage Contingency Plan
- Current local storage is 101% of restricted capacity
 - Anderson is drained per the FERC order
 - Four other reservoirs have seismic restrictions

Anderson Dam Project



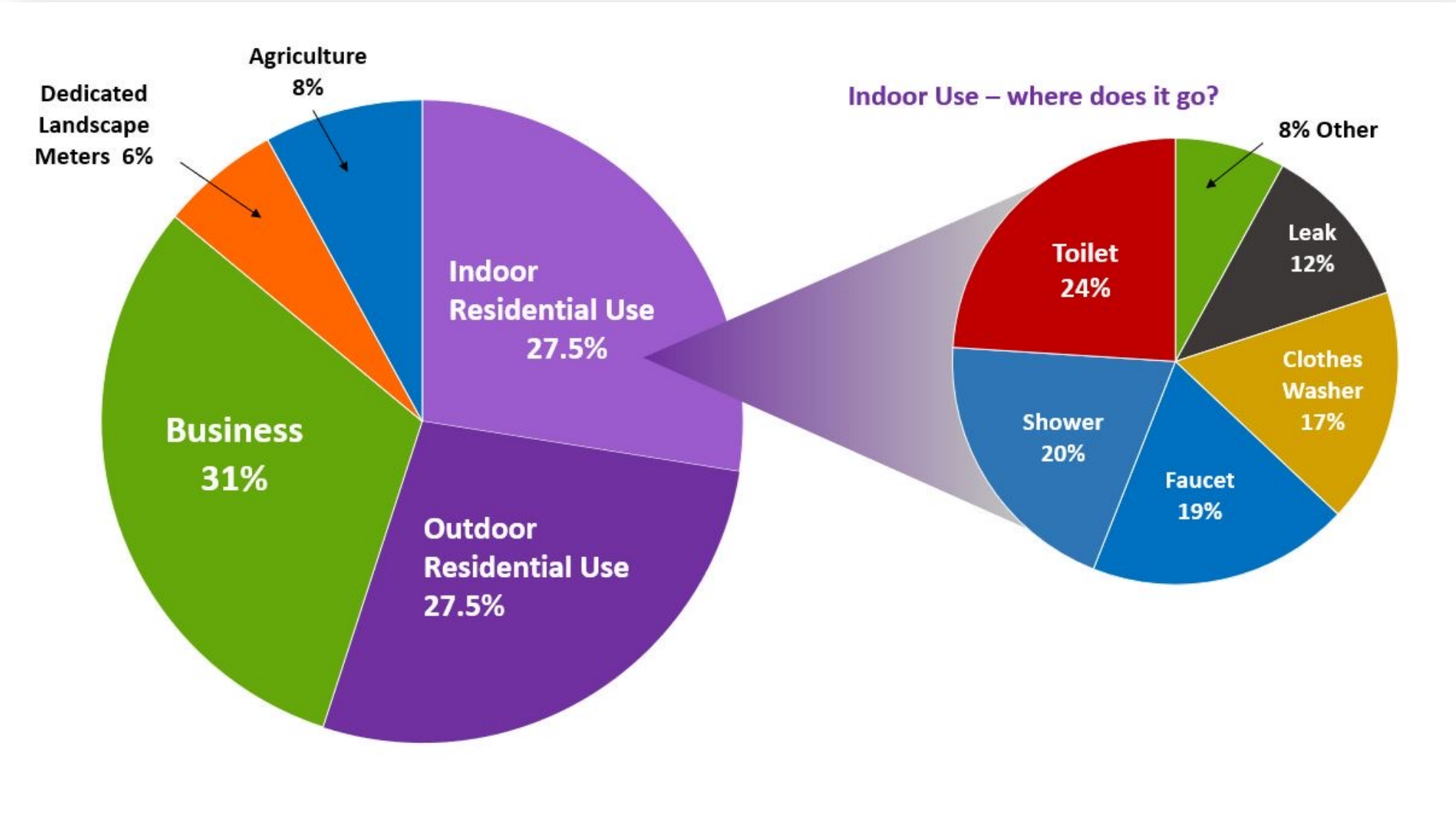
- Drained by federal mandate for seismic retrofit (89,278 acre-feet unrestricted capacity)
- Loss of Anderson makes us more vulnerable to drought

Purified Water: a long-term solution

- Valley Water investment in technology
- Improve supply reliability consistent with Water Supply Master Plan 2040
- Meet goal of 10% of Santa Clara County's water demand from water reuse
- Purified water can help replenish groundwater



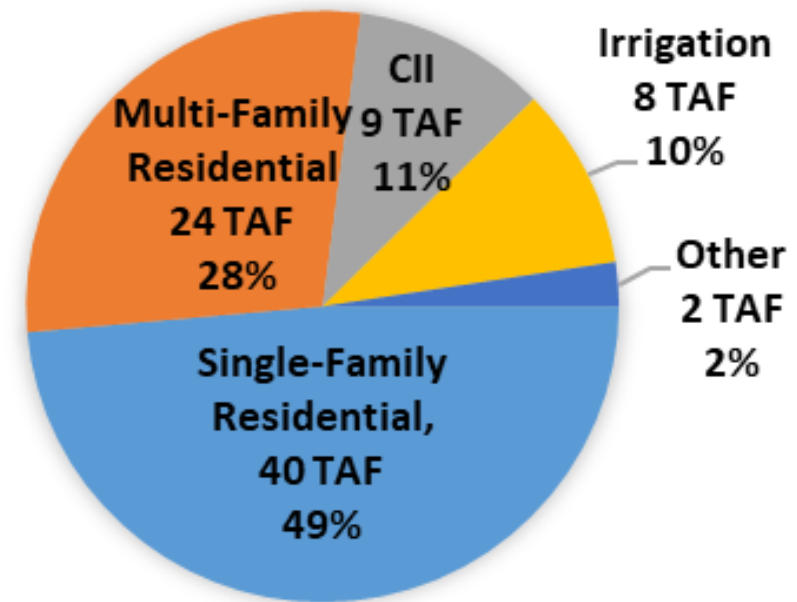
Water Usage Breakdown



Water Conservation as a Way of Life

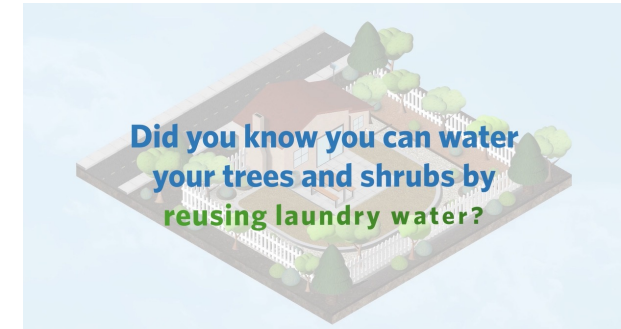
- Long-term conservation reduces risks for current and future droughts
- Conservation Savings Targets
 - 99,000 AF/year by 2030
 - 109,000 AF/year by 2040
- 83,200 AF/year saved through 2023

WATER SAVINGS BY SECTOR



Extensive Public Outreach

- Landscape Rebate Program
- Water-Wise Surveys
- Graywater Rebate
- CII Outreach





Valley Water

Clean Water • Healthy Environment • Flood Protection