

Lower Peninsula and West Valley Watershed Master Plans

Presented by: **Samantha Greene**, Unit Manager, Water Resources Planning and Policy Unit
Environmental and Water Resources Committee, April 21, 2025 (revised April 17, 2025)

Agenda

- Receive an overview of Watershed Master Planning
- Receive an update on the status of West Valley and Lower Peninsula Watershed Plans
- Discuss Next Steps



What is Watershed Master Planning?

Water Supply



Natural Ecosystems



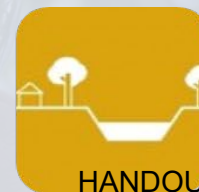
Water Quality



Climate Change



Flood Risk Reduction



Why it Matters

Vision: Managing Santa Clara County water resources holistically and sustainably to benefit people and the environment in a way that is informed by community values

Guiding doc for watershed management

Reflection of community values

Path for multi-benefit solutions

Springboard for project partnerships

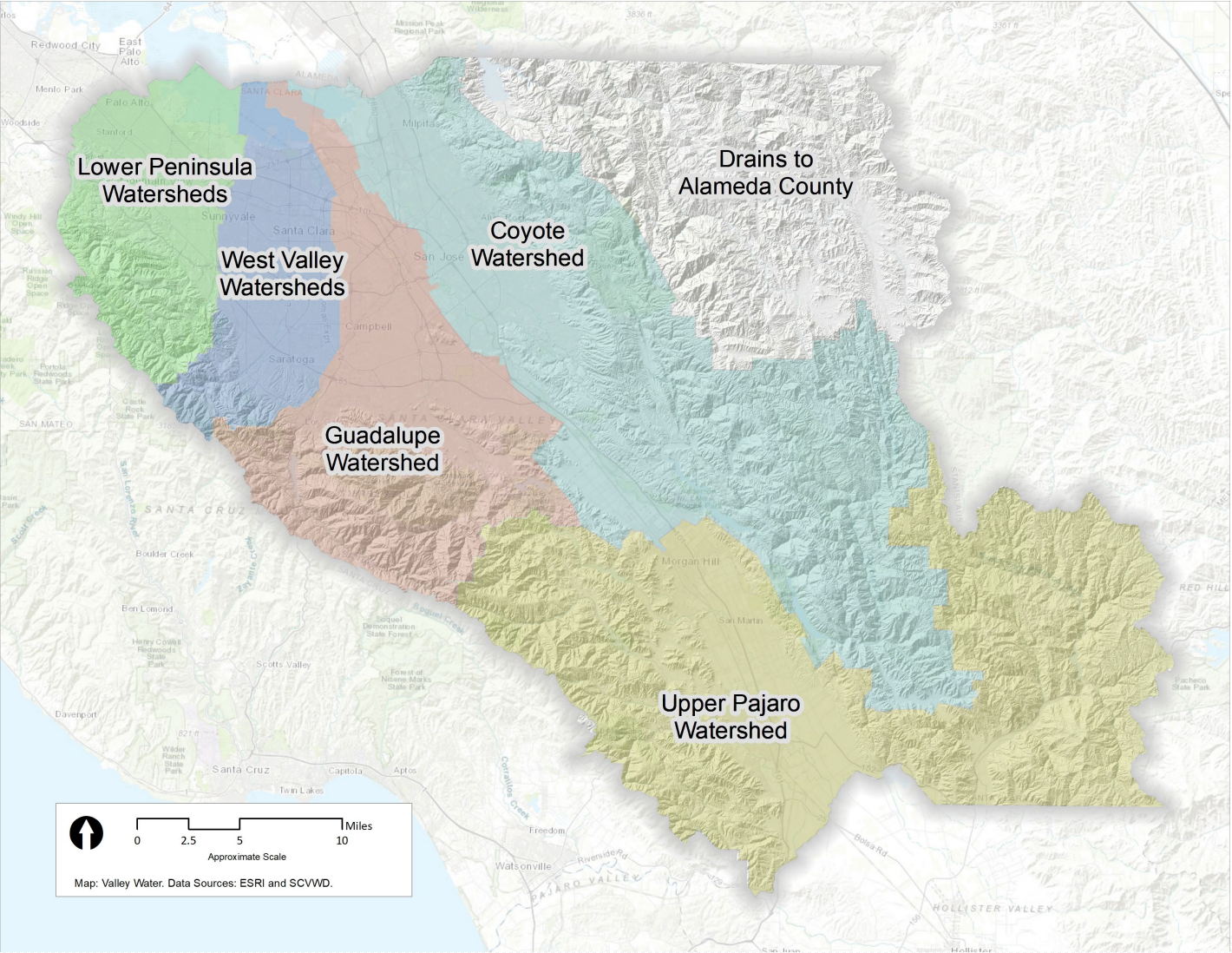
Tool for decision makers

Informational resource on the watersheds

Countywide Framework

5

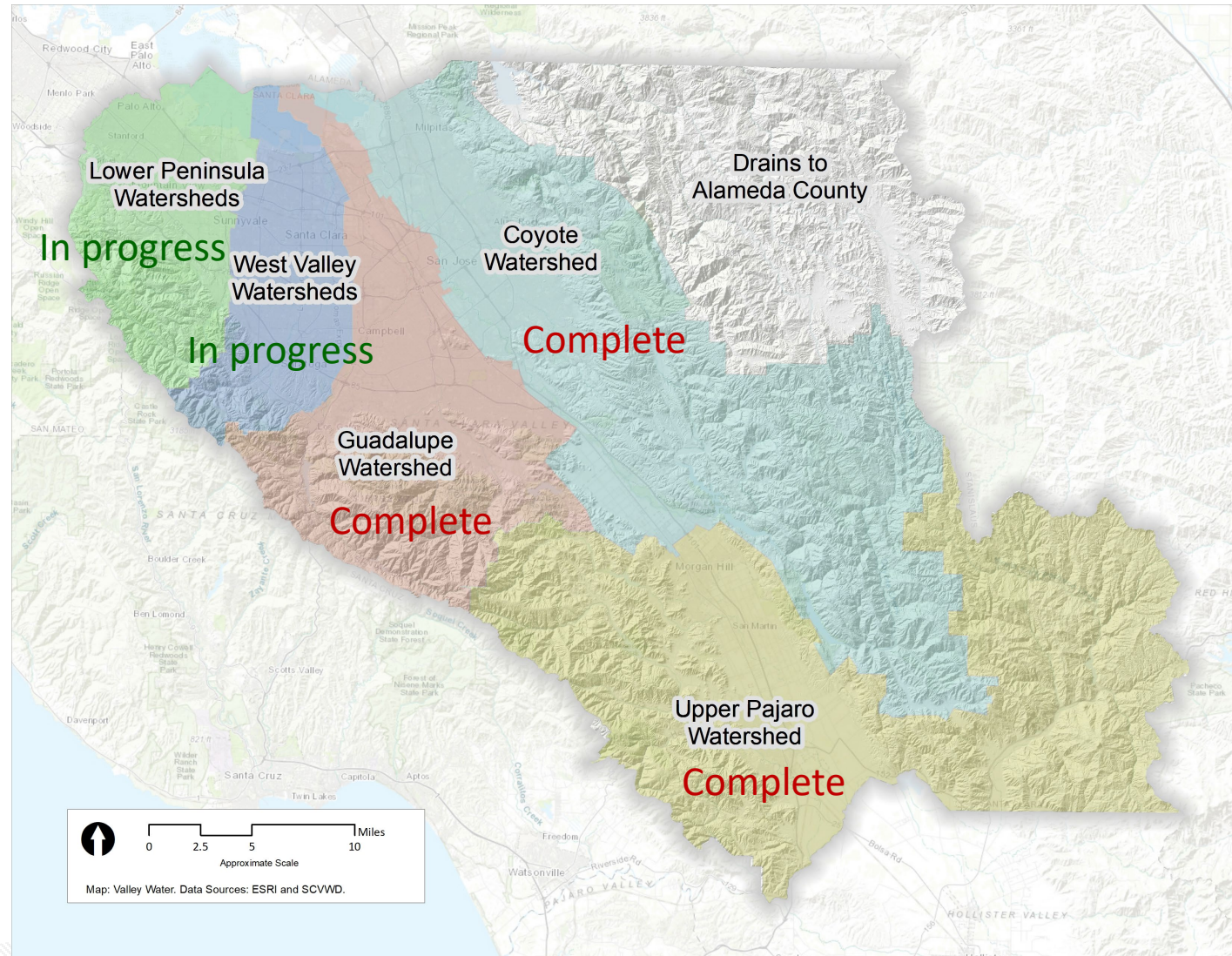
valleywater.org



Watershed Plans

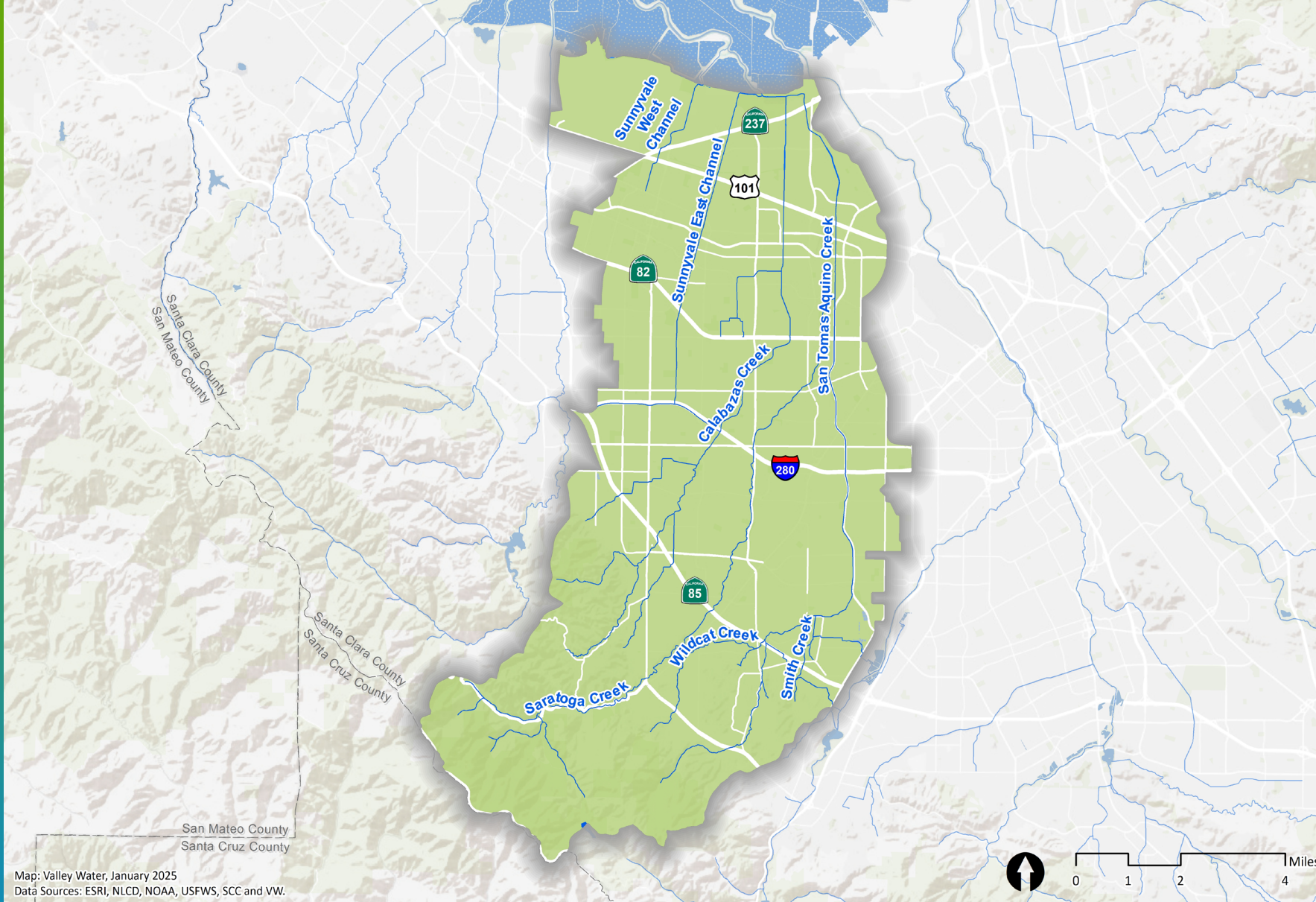
6

valleywater.org



West Valley

- 85 sq miles
- Highly urban and channelized
- Select areas support native rainbow trout
- Waterways connect to Guadalupe Slough in south San Francisco Bay

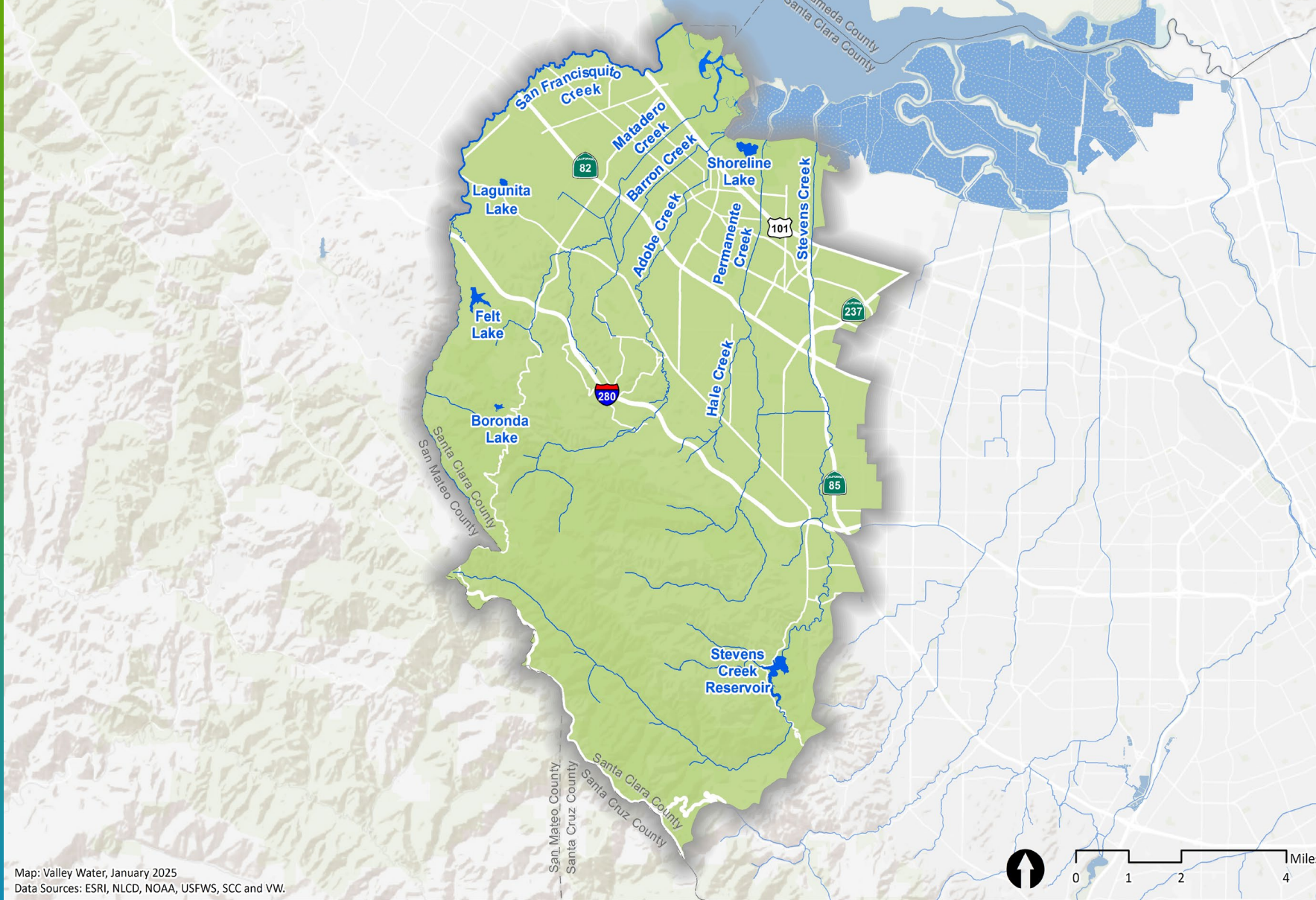


**West Valley
Watershed**



Lower Peninsula

- 98 sq miles
- Highly urban and channelized
- Several streams supports native steelhead
- Valley Water is part of San Francisquito Creek Joint Powers Authority



**Lower Peninsula
Watershed**



Key Elements of Plan

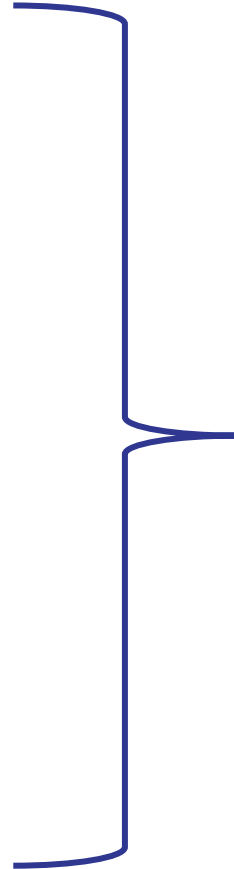
Setting

+

Metrics

+

Priority Actions



Watershed Master Plan

9

valleywater.org

Setting Element

- Summarizes existing conditions of the watershed
- Based on the in-depth Existing Conditions Report
- Identifies Challenges and Opportunities for Watershed Management



Objectives, Metrics, and Targets Element 11



Objective A
Protect and Maintain
Water Supplies



Objective B
Protect and Improve Surface
and Ground Water Quality



Objective C
Reduce Flood Risk



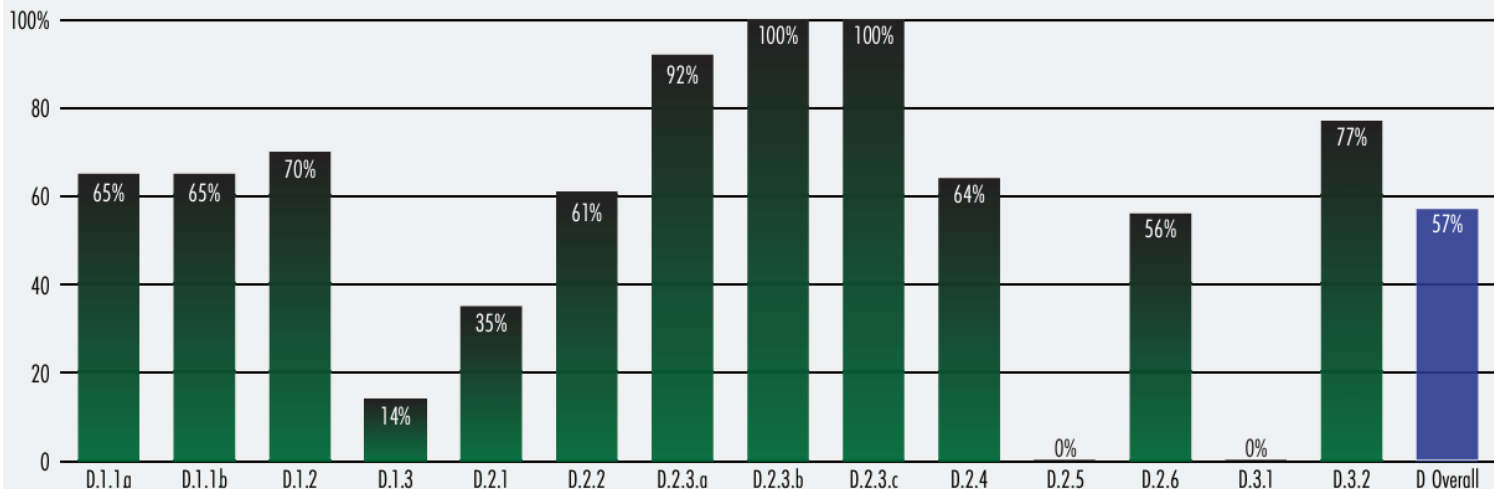
Objective D
Protect, Enhance and
Sustain Natural Ecosystems



Objective E
Mitigate and Adapt to
Climate Change



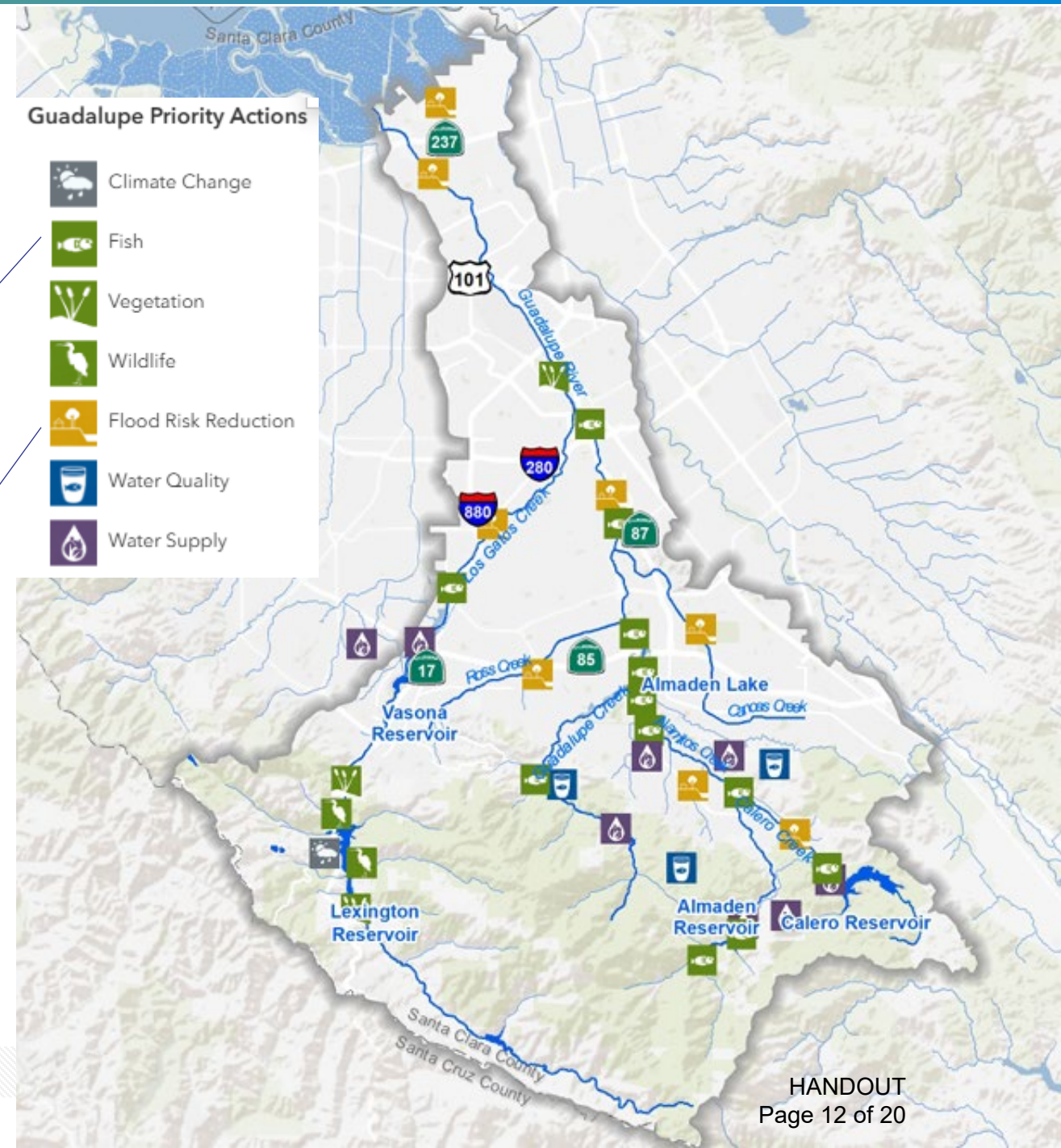
Objective D Metrics - PERCENT COMPLETE



Priority Actions Element

Ecology Example: Gravel Augmentation and Large Woody Debris Placement- identifies specific locations for steelhead habitat

Flood Risk Example: Lower Guadalupe Project - provides natural flood protection for residents and businesses



Community Network

List of Groups to Engage

Agricultural/Ranching

Economic Vitality & Sustainability

Educational Institutions

Tribes/ Environmental Justice

Environmental Org./Stewardship

Governing Bodies - Regulatory Agencies

Municipalities/Land Use Agencies

Open Space Conservation/Recreation

Residents/Community-Based Org.

Special Joint Organizations/Coalitions

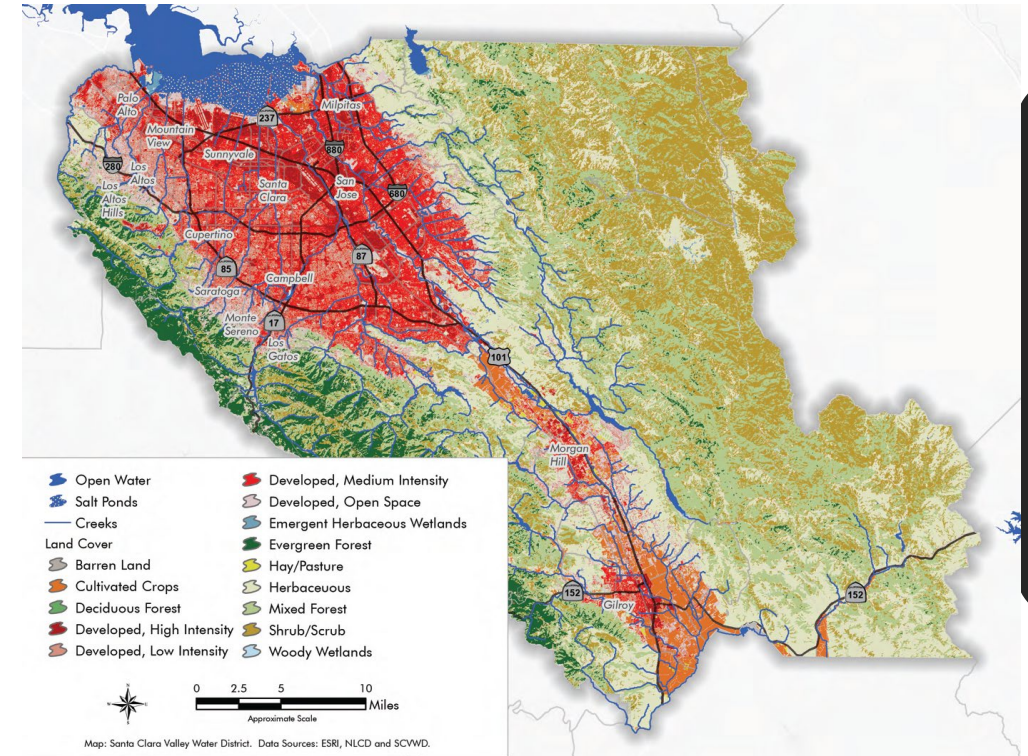
Subject Matter Experts/Research & Data

Water Resource Agencies / Special Districts

Existing Conditions Report

14

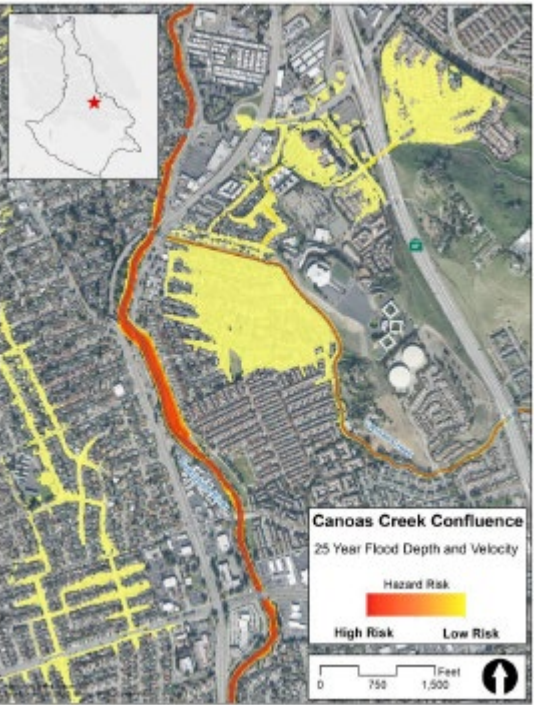
- Sections on climate change, land use, ecology, water supply, water quality, and flood risk
- Each section will describe:
 - Past, present, and future conditions
 - Challenges and opportunities



Flood Vulnerability Assessment

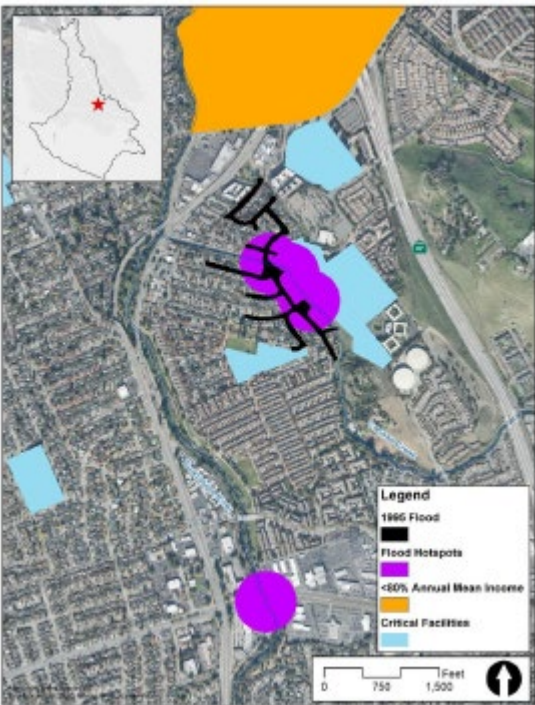
15

Physical



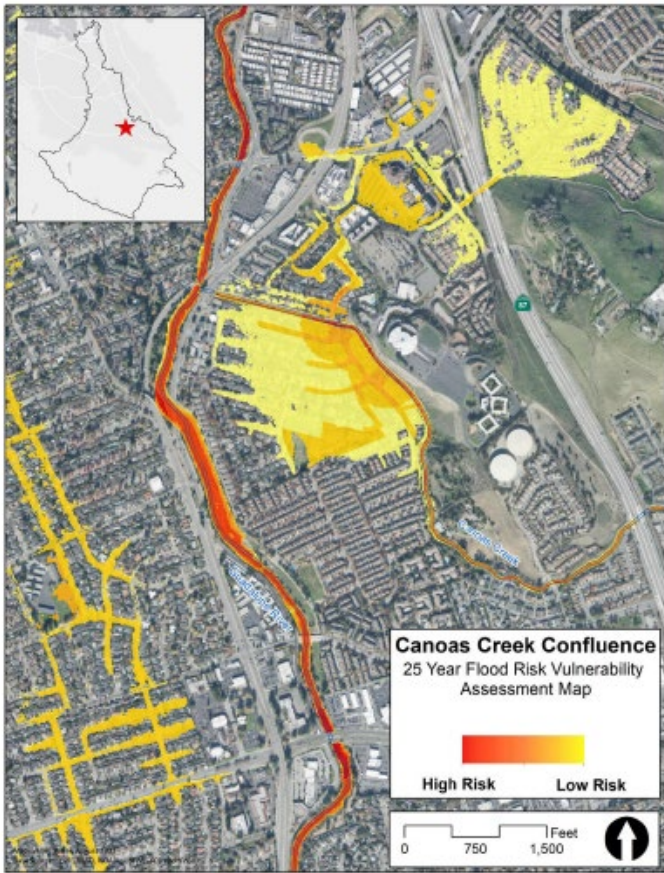
+

Statistical and Social



=

Combined Vulnerability Map



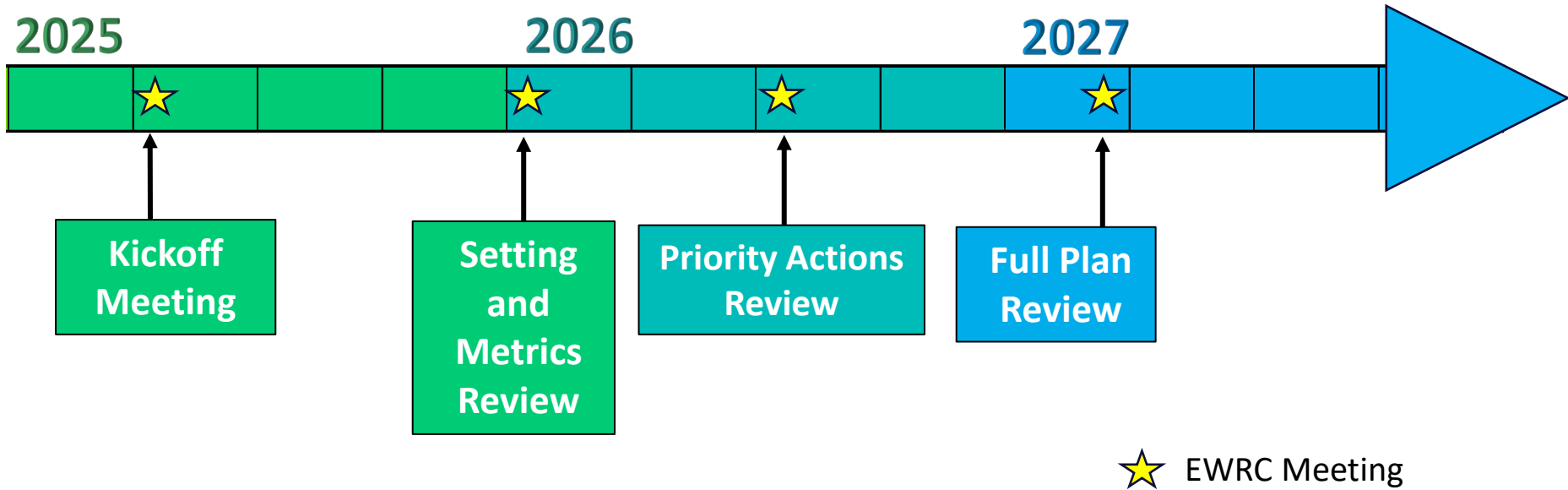
Community Network Meeting

16

- Kick off meeting on March 4, 2025
- Over 60 attendees represented cities, community groups, regulatory agencies, environmental groups, academic institutes, etc.
- Interest in improving watershed ecological health and flood risk reduction.



Project Schedule



Next Steps

- Return to EWRC Jan 2026 for input on Existing Conditions and Metrics
- Return to EWRC July 2026 for input on Priority Actions



18

valleywater.org

Discussion

What environmental issues within the watersheds should the plans cover?

What concerns for the watersheds do you want to make sure we look into?

Any questions?



QUESTIONS

