

PROPERTY MAP



OC Fair & Event Center
88 Fair Drive, Costa Mesa, CA 92626
www.ocfair.com

LEGEND

EXHIBIT HALLS	OUTDOOR SPACES	MEETING & MULTIPURPOSE AREAS	OFFICE BUILDINGS	OTHER
1 Costa Mesa Building	8 Action Sports Arena	15 Courtyard	25 Security	R Restrooms
2 Santa Ana Pavilion	9 Main Mall	16 Country Meadowsi	26 Box Office	Coming Soon
3 Huntington Beach Building	10 Park Plaza	17 Pacific Amphitheatre	27 Administration	
4 Anaheim Building	11 Festival Fields	18 Centennial Farm	28 Event Operations	
5 OC Promenade	12 Serenity Walk	19 Heroes Hall	29 The Ranch Community Center	
6 Los Alamitos Building	13 Crafters Village	20 Table of Dignity	30 OVG	
7 Livestock	14 Campground		31 Silo Building	

OVERVIEW

OC Fair & Event Center is a 150-acre event venue that hosts over 150 events and attracts approximately 4.3 million visitors annually. Our versatile multi-use property can be transformed to fit a variety of events from small private events to large-scale trade shows and festivals. Our full-service capabilities cover concessions, security, audio/visual, on-site camping and more.

In addition to great year-round weather in sunny Southern California, we are also conveniently located nearby numerous lodging options, restaurants, shopping, major freeways (55 and 405) and John Wayne Airport.

AT A GLANCE

150 acres

157,000
sq. ft.
unique event
space

24+ indoor
and outdoor
options

Conventions, expos and trade shows
Corporate events and fundraisers
Private events
Seasonal events
Concerts and festivals

Weddings
National touring events
Meetings
Pop-up events
Holiday parties

Contact sales@ocfair.com or 415-705-5542 for inquiries or to schedule a tour.

AREA MAP



MAIN MALL EAST OVERVIEW



EXHIBIT HALLS

- Anaheim Building
- OC Promenade
- Los Alamitos Building

EAST MAIN MALL



ANAHEIM
12,636 Square Feet
Climate-Controlled Exhibit Hall

OC PROMENADE
18,035 Square Feet
Outdoor Covered Space

LOS ALAMITOS
16,640 Square Feet
Climate-Controlled Exhibit Hall

TOTAL: 50,660 Square Feet

FLOOR:

ANAHEIM
70' x 201' Hi-Gloss Concrete

OC PROMENADE
94' x 199.5' Concrete

LOS ALAMITOS
86.5' x 200.9' Hi-Gloss Concrete

ROLL-UP ENTRY DOOR:
ANAHEIM - 12' X 14'

ROLLING GATE WIDTH:
OC PROMENADE - 16' 6"

ROLL-UP ENTRY DOOR:
LOS ALAMITOS - 12' x 14'

BOOTH SPACES (10' X 10'):
ANAHEIM
OC PROMENADE
LOS ALAMITOS

Options available, inquire for details.

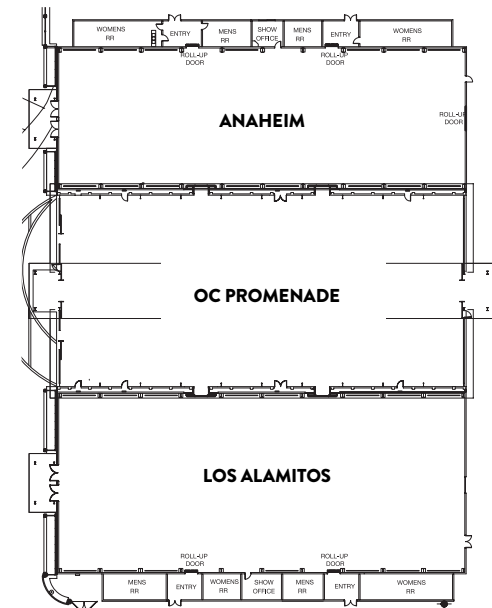
ASSEMBLY*:

ANAHEIM
Standing Space: 2,527
Seated Space: 1,805

OC PROMENADE
Standing Space: 3,607
Seated Space: 2,576

LOS ALAMITOS
Standing Space: 3,292
Seated Space: 2,351

*Pending Fire Marshal approval.



CEILING HEIGHT:

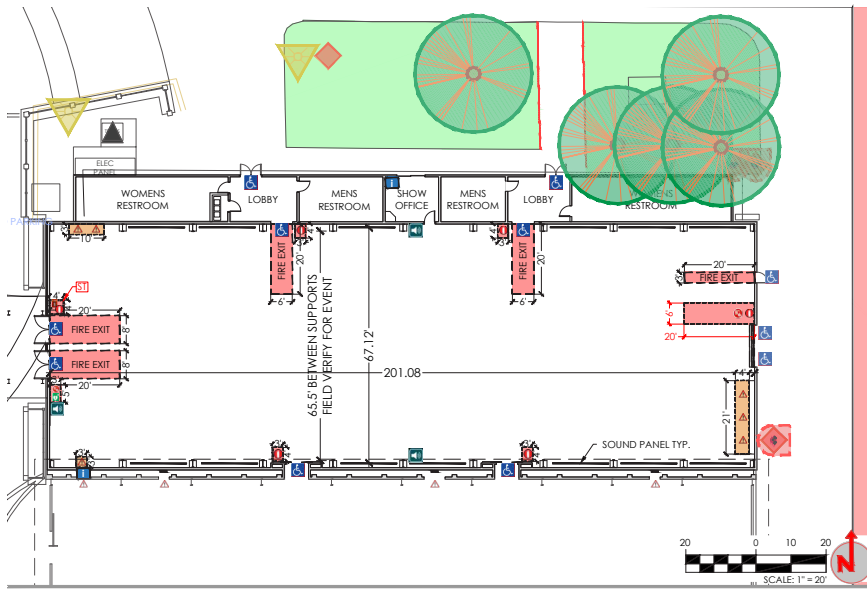
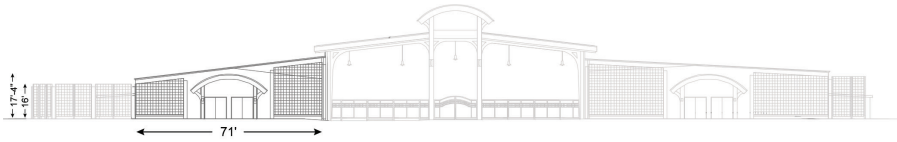
ANAHEIM - 16' to 17' 4"
OC PROMENADE - 24' - 30'
LOS ALAMITOS - 14' 10" to 17' 3"

TRADESHOW / BANQUET CAPACITY*:

ANAHEIM - 842
OC PROMENADE - 1,202
LOS ALAMITOS - 1,097
TOTAL - 3,141

*Pending Fire Marshal approval.

ANAHEIM BUILDING



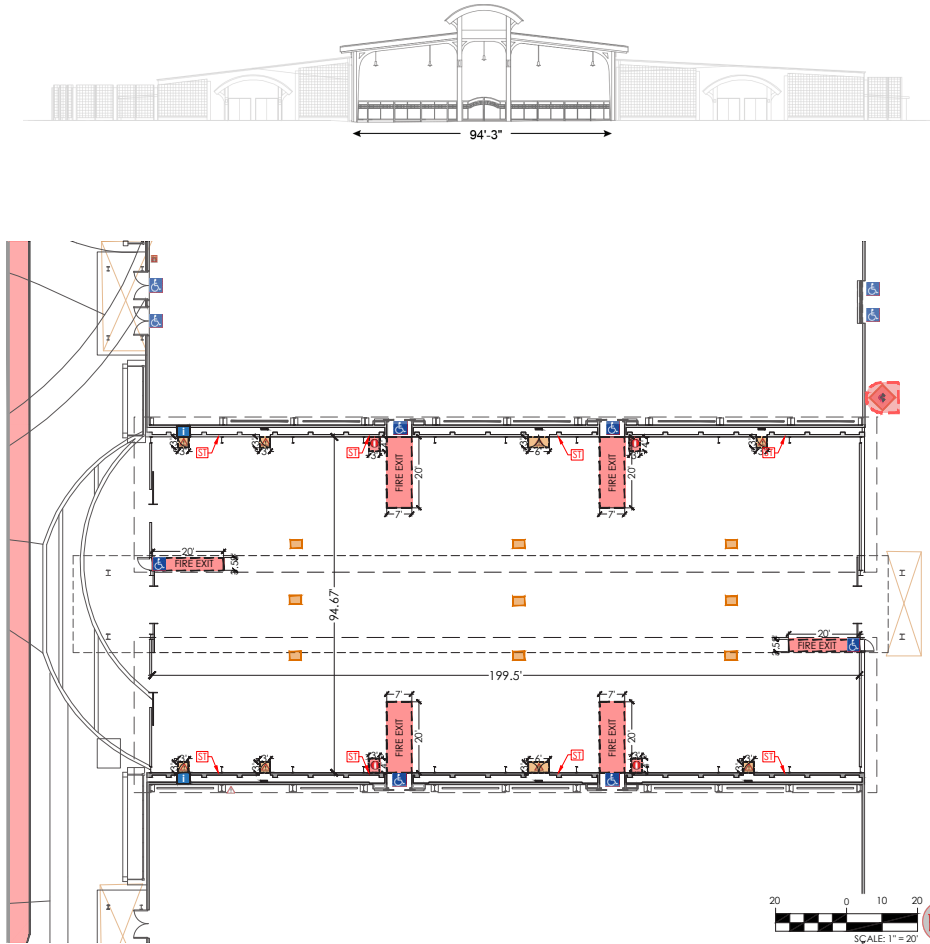
12,636 Square Feet

Floor: 70' x 201' Hi-Gloss Concrete
Ceiling Height: 16' to 17' 4"
Roll-Up Entry Door: 12' x 14'
Climate Control: Y
Covered: Y

Tradeshow / Banquet Capacity*: 842
Assembly*
 Standing Space: 2,527
 Seated Space: 1,805
 *Pending Fire Marshall approval



OC PROMENADE



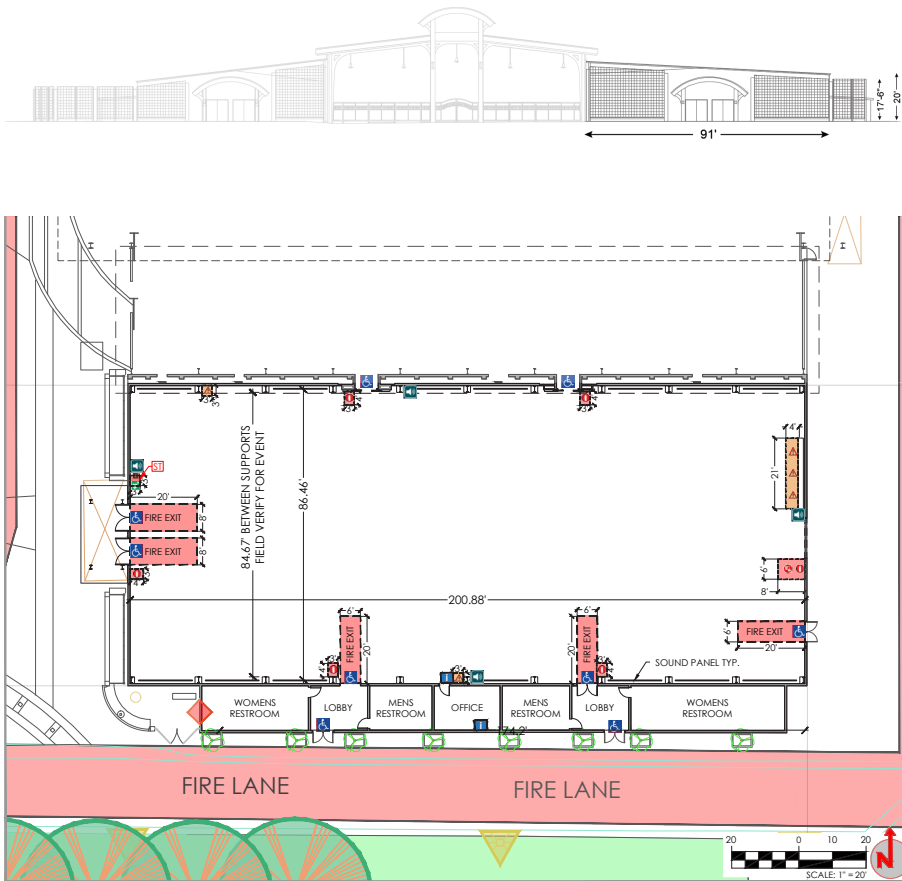
18,035 Square Feet

Floor: 94' x 199.5' Concrete
Ceiling Height: 24' - 30'
Rolling Gate: 16' x 6"
Climate Control: N
Climate Control: Y

Tradeshow / Banquet Capacity*: 1,202
Assembly*
 Standing Space: 3,607
 Seated Space: 2,576
**Pending Fire Marshall approval*



LOS ALAMITOS BUILDING



16,640 Square Feet

Floor: 86.5' x 200.9' Hi-Gloss Concrete

Ceiling Height: 14' 10" to 17' 3"

Roll-Up Entry Door: 12' x 14"

Climate Control: Y

Covered: Y

Banquet Table/Chairs: 1,097

Assembly*

Standing Space: 3,292

Seated Space: 2,351

**Pending Fire Marshall approval*

