



IMPORTANT DATES TO REMEMBER

OC Fair runs July 18 to Aug. 17

Competition	Online Registration Deadline	Competition Delivery Date	Check-In Time	Entry Pickup Date
Dry & Silk Arrangements	Monday, July 14 2 p.m.	Tuesday, July 15	7-9:30 a.m.	Tuesday, Aug. 19 7-9:30 a.m.
Ikebana, Miniature & All Fresh Arrangements	Wednesday, July 16 2 p.m.	Thursday, July 17	7-9:30 a.m.	Tuesday, July 22 7-9:30 a.m.
	Monday, July 21 2 p.m.	Tuesday, July 22	7-9:30 a.m.	Tuesday, July 29 7-9:30 a.m.
	Monday, July 28 2 p.m.	Tuesday, July 29	7-9:30 a.m.	Tuesday, Aug. 5 7-9:30 a.m.
	Monday, Aug. 4 2 p.m.	Tuesday, Aug. 5	7-9:30 a.m.	Tuesday, Aug. 12 7-9:30 a.m.
	Monday, Aug. 11 2 p.m.	Tuesday, Aug. 12	7-9:30 a.m.	Tuesday, Aug. 19 9:30 a.m. - noon

Final competition pick up: Tuesday, Aug. 19, 9:30 a.m. - noon

We cannot guarantee that items will be available for pick up after this date. Ribbons will not be mailed.

Contact Garden & Floral Staff • gardenfloral@ocfair.com • Office 714-708-1619
OC Fair & Event Center • 88 Fair Drive, Costa Mesa, CA 92626



TABLE OF CONTENTS

Rules	3
Eligibility/Entry Limit/How to Enter	4
Help with Entering/Entry Delivery	5
OC Fair Ticket/Entry Display/Entry Pick Up	6
Judging	7
Awards	8
Dry & Silk Arrangements	9
Miniature Arrangements	10
Ikebana Arrangements	11
Amateur Fresh Arrangements	12
Professional Fresh Arrangements	13
Masterpiece Floral Arrangements	14



RULES & GUIDELINES

1. [Local](#) and [state rules](#) govern this competition.
2. **Exhibitors are responsible for reading the competition guidelines and relevant supporting documents and must abide by them. There may be changes from the previous year. Relevant documents include:**
 - [Horticulture Judging Criteria](#)
 - [Horticulture Glossary and FAQ](#)
 - [How to Prepare Your Floral Arrangements](#)
3. **Note that this page provides only broad guidelines for this competition.** More specific information is spread throughout pertinent sections in this guide.
4. **Entry fees are non-refundable.**
5. Materials
 - Floral arrangements may use commercially grown materials.
 - Entries are not allowed to include food items (e.g., candy, noodles, fruits, vegetables). *Exception: properly dried produce in dried arrangements.*
 - Accessories are permitted, but emphasis should be on the creative use of natural plant materials to represent specific themes rather than the excessive use of props.
 - **Items of great or sentimental value should not be used.**
6. Set-up
 - Exhibitors have a maximum of five (5) minutes to set up each arrangement.
 - **Exhibitors may only take photos of their own arrangement(s)** and must do so within the set-up time.
 - **Exhibitors may not touch other exhibitors' entries.**
 - Staff maintains the right to ask exhibitors to leave the set-up area at any time.
 - Consider that individual staff may be required to move your entries.
7. Size and weight limits
 - All entries should weigh less than 25 lbs.
 - Miniature arrangements should not exceed six inches (6") in length, width or height.
 - All other arrangements should not exceed two feet (2') in length or width, or four feet (4') in height.
8. **OC Fair reserves the right to refuse to accept or disqualify and remove from exhibit any entry considered ineligible for competition** (e.g., entries with serious disease or insect problems, under quarantine as specified under the California Department of Food and Agriculture or endanger the staff and/or public).
9. **Although reasonable efforts will be undertaken to safeguard exhibitors' property, neither the State of California nor OC Fair & Event Center will be responsible for any loss, damage or theft of exhibitors' property brought on the premises during OC Fair. Every precaution will be taken in the handling and exhibiting of entries.**



ELIGIBILITY

Open to all California residents, ages 16 and older (by July 18).
See specific Division details and "Skill Levels" in the HOW TO ENTER section for more information.

ENTRY LIMIT

Exhibitors may enter in multiple Divisions and/or Classes each competition date but are limited to **one entry per Class per competition date**.

If multiple entries are submitted by the same exhibitor in the same Class, they will be disqualified.

HOW TO ENTER

- Go to ocgard.fairwire.com to submit your entries online by the registration deadline listed on the front cover of this guide. **PLEASE NOTE: all exhibitors must create a new account; last year's accounts are no longer valid.**
- For detailed information on the online entry process, consult the [Entry Tutorial](#).

Exhibitors must submit all entries in the correct Division/Class according to their skill level:

- **AMATEUR:** For exhibitors who arrange flowers as a hobby or pastime, do not regularly present or promote their work for sale and/or are students of the art.
- **PROFESSIONAL:** For exhibitors who are actively and regularly exhibiting and selling their product(s) or are employed in the field.
- **OPEN:** These competitions are open to all California residents aged 16+ regardless of skill level.

Exhibitor Name

- Provide the most complete information possible for each entry (e.g., species/cultivar, *if known*).
- **Entries must be made under the name of the individual who prepared it** (this also applies to youth entries). Do not use team, business or fictitious names.
- *All information will be displayed as entered. Please carefully proofread for punctuation, capitalization and spelling. Fair Management is not responsible for errors on entry forms. Severe errors may lead to disqualification.*

Entry Confirmation

An email notification and confirmation will be sent immediately after your online payment is received. **PLEASE NOTE: this email will not be sent if you do not click the final "finish" button.**

Entry Fees

Entry fees are non-refundable. Consult the Division pages later in this guide for further details.



HELP WITH ENTERING

Email: GardenFloral@ocfair.com

Please contact us as early as possible with any questions or difficulties regarding the entry process. We ask that you review all relevant materials before inquiring, including:

- [Horticulture Judging Criteria](#)
- [How to Prepare Your Floral Arrangements](#)

Although there will be a help desk available during entry delivery to fix mistakes, this service will only be available to exhibitors who have already registered and paid to enter that competition week. ***We are unable to accept payment or registration during entry delivery.***

For more guidance, a short document clarifying some of the terms used in this guide and addressing several frequently asked questions can be accessed here: [Horticulture Glossary and FAQ](#)

ENTRY DELIVERY

7 – 9:30 a.m. (see cover page for competition delivery dates)

Late entries will not be accepted.

[Entry Delivery Map](#)



- Enter Gate 1 off Fair Drive and park in Lot B (in front of Centennial Farm)
- Check-in tables will be located at the Centennial Farm gate for you to pick up your entry tags, tickets and/or ribbons. **All exhibitors must check in and enter through the Farm gate.**
- **Exhibitors will not be admitted to the Farm before 7 a.m. and must be checked in and inside the Farm gate by 9:30 a.m.** Entries may be delivered by someone other than the exhibitor.

Please bring other individuals or tools, like wagons, if you need assistance transporting your entries, especially if large in size or quantity. Centennial Farm has a few push carts available for exhibitor use on a first-come, first served basis, but we cannot guarantee assistance. If you are unsure what is appropriate to enter or what you are allowed to bring to transport your item(s), please contact us before delivery day to confirm.



OC FAIR TICKET

Exhibitors will receive one (1) 2025 OC Fair admission ticket at the time of entry delivery to ensure they can view the results of their efforts on display.

- One (1) ticket per exhibitor, not per entry.
- Tickets are good any day during the OC Fair and do not require reservations. Tickets must not be re-sold.

ENTRY DISPLAY

After judging, entries will be displayed for one (1) Fair week (unless specified otherwise) in the Silo Gallery at Centennial Farm. Images of ribbons will be printed on the entry tags to identify awards given.

Items will be discarded if they deteriorate. There are no guarantees that an entry will be displayed.

ENTRY PICKUP

Entry pick-up dates are listed on the front page of this guide.

Final Entry Pickup: Tuesday, Aug. 19

If you are unable to pick up your item(s), please arrange for someone to pick them up for you. Unclaimed items and ribbons become the property of OC Fair and will be discarded. **We will not provide reminders via phone call or email.**

OC Fair & Event Center is not responsible for exhibits or ribbons left after the final entry pickup date.



JUDGING

Qualified judges will be selected by the program coordinator. The program coordinator may choose new judges each year, or judges may judge different Divisions from year to year. The judges are professionals and their decisions are final.

Judging is not open to the public. Judges reserve the right to remove or disqualify any entry in violation of the rules, in poor taste or not in accordance with the competition standards. They also have the authority to transfer to the correct Class any exhibit that does not meet the requirements of the Division or Class in which it was entered.

Judges are not obligated to reevaluate the awards given to other entries if an entry is disqualified or moved. Awards are not required to be given unless entries are of a minimum merit. ***No exhibitor shall be entitled to an award that has been disqualified as the result of their own error.***

Judging Criteria

All criteria for judging the horticulture competitions are listed in a separate document: [Horticulture Judging Criteria](#)

- All Floral Arrangements Divisions: 201-265
- Placed using the American Judging System, wherein exhibits are ranked against one another.

Comment Sheets

Comment sheets are notes from the judges regarding the entry's performance. Comments from the current competition week will be made available on the relevant entry pick up date. They are also available for viewing or pick up any day of the competition week when OC Fair is open; ask the staff member at the exhibit's information table.



AWARDS

Best of Show	Ribbon
Division Winner	Ribbon
First/Blue.....	Ribbon (5 points each)
Second/Red.....	Ribbon (3 points each)
Third/White.....	Ribbon (1 point each)
Honorable Mention.....	Ribbon

Judging Results

Results will be posted online at ocfair.com/results as soon as possible.

Please do not call, email or reach out via social media for competition results.

Entry & Ribbon Pickup

Ribbons can be picked up along with entries on the entry pick up days listed on the front page of this guide. If you are unable to pick up your item(s) on these dates, please arrange for someone to pick them up for you.

- **Note that the final pick up date is Tuesday, Aug. 19 from 9:30 a.m. - noon.** Items and ribbons left unclaimed after the final pick up date become the property of OC Fair and may be discarded. Ribbons will not be mailed.

Sweepstakes & Premiums

Adult and Youth Sweepstakes are tallied based on the accumulated points (see above for award point values) for all floral arrangement competitions across all five judging days. Sweepstakes awards are as follows:

Adult SweepstakesRibbon & \$50

Sweepstakes awards and premiums will be made payable to the name of the winning exhibitor as indicated on their online entry account and mailed within 30 business days of the final day of OC Fair. Signed judging sheets will be used as evidence for payment of premiums; ribbons and tags will not be accepted.





Dry & Silk Arrangements (Open)

Eligibility Open to all California residents, ages 16 and older

Entry Limit One (1) per Class, per date

Entry Fee \$10 per entry

Premiums First place \$30 • Second place \$25 • Third place \$20

• **Setup Time:** *Floral arrangement exhibitors have a maximum of five minutes to set up each arrangement.*

- Staff maintains the right to ask exhibitors to leave the setup area at any time.
- Floral arrangements may use commercially grown materials.
- Entries should weigh less than 25 lbs..
- Professional floral designers are encouraged to display business cards with their entry(ies). Business cards will be displayed after judging is complete to ensure anonymous judging.
- For more information, read the recommendations for [How to Prepare Your Floral Arrangements.](#)

DIVISION 201

Dry Arrangement (Open)

Competition date: July 15

- No fresh or silk flowers.
- Acceptable dry materials include: silica gel flowers, freeze-dried flowers, everlasting, glycerinated materials, pressed and air-dried materials.
- Acceptable fillers include: grasses, herbs, grains, woods, pod, raffia, cones and mosses.
- Entries are not to exceed 2 ft. in length or breadth, 4 ft. in height, and must be movable by staff for final placement.

Class 01: Wreath

Class 02: Bouquet

Class 03: 2025 OC Fair Theme, "Find Your Happy"

DIVISION 211

Silk Arrangement (Open)

Competition date: July 15

- No fresh or dried flowers or foliage allowed.
- Acceptable items include: decorative wire, stones, glass and sticks.
- Flowers may be painted.
- Entries are not to exceed 2 ft. in length or breadth, 4 ft. in height, and must be movable by staff for final placement.

Class 01: Bridal Bouquet

Class 02: Fairytale

Class 03: 2025 OC Fair Theme, "Find Your Happy"



Miniature Arrangements (Open)

Eligibility Open to all California residents, ages 16 and older

Entry Limit One (1) per Class, per date

Entry Fee \$10 per entry

Premiums First place \$30 • Second place \$25 • Third place \$20

• **Setup Time:** *Floral arrangement exhibitors have a maximum of five minutes to set up each arrangement.*

- Staff maintains the right to ask exhibitors to leave the setup area at any time.
- Floral arrangements may use commercially grown materials.
- Professional floral designers are encouraged to display business cards with their entry(s). Business cards will be displayed after judging is complete to ensure anonymous judging.
- For more information, read the recommendations for [How to Prepare Your Floral Arrangements.](#)

Miniature-specific guidelines:

- Entries should not exceed 6 inches in length, height, or breadth.
- No fruits, vegetables (fresh or canned), or candy may be used.
- All materials should be secured to a base or container.

DIVISION 221

Competition date: July 17

Class 01: Holiday, specify

Class 02: At the Beach

Class 03: 2025 OC Fair Theme, "Find Your Happy"

DIVISION 222

Competition date: July 22

Class 01: Brooch

Class 02: Fame & Fortune

Class 03: Exhibitor's Choice, specify theme

Entries may only be entered as "Exhibitor's Choice" if a Class for the chosen theme does not exist.

DIVISION 223

Competition date: July 29

Class 01: Farmer's Market

Class 02: Dessert

Class 03: OC Fair Theme, specify year

DIVISION 224

Competition date: Aug. 5

Class 01: Under the Sea

Class 02: Fun & Games

Class 03: Exhibitor's Choice, specify theme

Entries may only be entered as "Exhibitor's Choice" if a Class for the chosen theme does not exist.

DIVISION 225

Competition date: Aug. 12

Class 01: Celebration, any

Class 02: Lucky Charm

Class 03: 2025 OC Fair Theme, "Find Your Happy"



Ikebana Arrangements (Open)

Eligibility Open to all California residents, ages 16 and older

Entry Limit One (1) per Class, per date

Entry Fee \$15 per entry

Premiums First Place \$70 • Second Place \$60 • Third Place \$50

• **Setup Time:** *Floral arrangement exhibitors have a maximum of five minutes to set up each arrangement.*

- Staff maintains the right to ask exhibitors to leave the setup area at any time.
- Entries are not to exceed two feet (2') in length or breadth, four feet (4') in height (2x2x4), and must be movable by staff for final placement.
- Entries should weigh less than 25 lbs.
- Floral arrangements may use commercially grown materials.
- Competitions are open to all California residents, ages 16 and up, regardless of skill level.
- Professional floral designers are encouraged to display business cards with their entry(ies). Business cards will be displayed after judging is complete to ensure anonymous judging.
- For more information, read the recommendations for [How to Prepare Your Floral Arrangements](#).

DIVISION 231

Competition date: July 17

Class 01: Rikki

Class 02: Freestyle

DIVISION 234

Competition date: Aug. 5

Class 01: Shoka

Class 02: Freestyle

DIVISION 232

Competition date: July 22

Class 01: Shakei Moribana

Class 02: Freestyle

DIVISION 235

Competition date: Aug. 12

Class 01: Hana

Class 02: Freestyle

DIVISION 233

Competition date: July 29

Class 01: Rimpa-Cho

Class 02: Freestyle



Amateur Fresh Arrangements

Eligibility Open to all California residents, ages 16 and older
Entry Limit One (1) per Class, per date
Entry Fee \$15 per entry
Premiums First place \$70 • Second place \$60 • Third place \$50

AMATEUR: Divisions are intended for exhibitors who arrange flowers as a hobby or pastime, do not regularly present or promote their work for sale and/or are students of the art.

• Setup Time: Floral arrangement exhibitors have a maximum of five minutes to set up each arrangement.

- Staff maintains the right to ask exhibitors to leave the setup area at any time.
- Entries are not to exceed two feet (2') in length or breadth, four feet (4') in height (2x2x4), and must be movable by staff for final placement.
- Entries should weigh less than 25 lbs.
- Floral arrangements may use commercially grown materials.
- No fruits, vegetables (canned or fresh) or candy may be used.
- Small items should be securely fastened to their containers.
- For more information, read the recommendations for [How to Prepare Your Floral Arrangements](#).

DIVISION 241

Competition date: July 17

Class 01: Ancient History
Class 02: Summer Break
Class 03: 2025 OC Fair Theme, "Find Your Happy"

DIVISION 242

Competition date: July 22

Class 01: Witchcraft
Class 02: Favorite Color
Class 03: Exhibitor's Choice, specify theme
Entries may only be entered as "Exhibitor's Choice" if a Class for the chosen theme does not exist.

DIVISION 243

Competition date: July 29

Class 01: Desserts
Class 02: Butterfly Garden
Class 03: 2025 OC Fair Theme, "Find Your Happy"

DIVISION 244

Competition date: Aug. 5

Class 01: Fame & Fortune
Class 02: Star Sign, specify
Class 03: OC Fair Theme, specify year

DIVISION 245

Competition date: Aug. 12

Class 01: Moon Garden
Class 02: In the Night
Class 03: Exhibitor's Choice, specify theme
Entries may only be entered as "Exhibitor's Choice" if a Class for the chosen theme does not exist.



Professional Fresh Arrangements

Eligibility Open to all California residents, ages 16 and older

Entry Limit One (1) per Class, per date

Entry Fee \$20 per entry

Premiums First place \$125 • Second place \$100 • Third place \$75

PROFESSIONAL: Divisions are intended for exhibitors who are actively and regularly exhibiting and selling their product(s) or employed in the field.

• Setup Time: Floral arrangement exhibitors have a maximum of five minutes to set up each arrangement.

- Staff maintains the right to ask exhibitors to leave the setup area at any time.
- Entries are not to exceed two feet (2') in length or breadth, four feet (4') in height (2x2x4), and must be movable by staff for final placement.
- Entries should weigh less than 25 lbs.
- Floral arrangements may use commercially grown materials.
- No fruits, vegetables (canned or fresh) or candy may be used.
- Small items should be securely fastened to their containers.
- Professional floral designers are encouraged to display business cards with their entry(ies).
- Business cards will be displayed after judging is complete to ensure anonymous judging.
- For more information, read the recommendations for [How to Prepare Your Floral Arrangements](#)

DIVISION 251

Competition date: July 17

Class 01: Medieval

Class 02: Iconic Landmarks

Class 03: Exhibitor's Choice, specify theme

Entries may only be entered as "Exhibitor's Choice" if a Class for the chosen theme does not exist.

DIVISION 252

Competition date: July 22

Class 01: Witchcraft

Class 02: Summer Solstice

Class 03: OC Fair Theme, specify year

DIVISION 253

Competition date: July 29

Class 01: Twisted Wonderland

Class 02: Teatime

Class 03: Exhibitor's Choice, specify theme

Entries may only be entered as "Exhibitor's Choice" if a Class for the chosen theme does not exist.

DIVISION 254

Competition date: Aug. 5

Class 01: Fame & Fortune

Class 02: Chinese Zodiac, 2025 Year of the Snake

Class 03: California Grown, specify theme

Entries may only be entered as "California Grown" if the plant material is a California crop (includes the use of produce for this Class)

DIVISION 255

Competition date: Aug. 12

Class 01: Moon Garden

Class 02: Light & Dark

Class 03: 2025 OC Fair Theme, "Find Your Happy"



Masterpiece Floral Arrangement (Open)

Eligibility Open to all California residents, ages 16 and older
Entry Limit One (1) per Class, per date
Entry Fee \$15 per entry
Premiums First place \$70 • Second place \$60 • Third place \$50

Masterpiece Arrangement Rules

- Exhibitors create their own arrangement based off of original artwork preselected by the Garden & Floral Department.
- Floral art should give the viewer the same emotion and feeling as the original artwork.
- Exhibitors may use commercially grown materials.
- Accessories are permitted, but emphasis should be on materials to symbolically represent specific themes.

DIVISION 261

Competition date: July 17

Class 01: Crate label for the Orange Fruit Company, Orange, California



DIVISION 263

Competition date: July 29

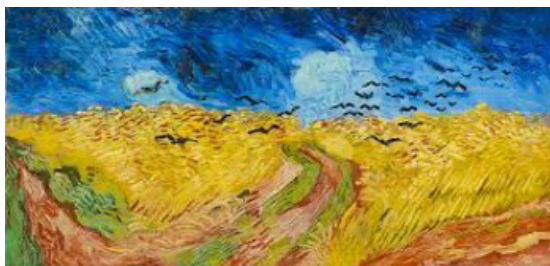
Class 01: Crate label, "PACKED FOR WILLIAM BROS." from the Palm Grove, Orange, California



DIVISION 262

Competition date: July 22

Class 01: Wheat Field with Crows Class by Vincent Van Gogh



DIVISION 264

Competition date: Aug. 5

Class 01: The Flower Seller by Diego Rivera





Masterpiece Floral Arrangement (Open)

Eligibility Open to all California residents, ages 16 and older

Entry Limit One (1) per Class, per date

Entry Fee \$15 per entry

Premiums First place \$70 • Second place \$60 • Third place \$50

Masterpiece Arrangement Rules

- Exhibitors create their own arrangement based off of original artwork preselected by the Garden & Floral Department.
- Floral art should give the viewer the same emotion and feeling as the original artwork.
- Exhibitors may use commercially grown materials.
- Accessories are permitted, but emphasis should be on materials to symbolically represent specific themes.

DIVISION 265

Competition date: Aug. 12

Class 01: Crate label, "Fullerton Orange County Gold Orange Citrus Fruit"

