



---

## ***BOARD OF DIRECTORS AGENDA REPORT***

MEETING DATE: **MAY 26, 2022** ITEM: **8A**

SUBJECT: **Presentation of Proposed Serenity Walk Concepts and  
Vote on Direction for Next Steps**

DATE: May 20, 2022

FROM: Michele Richards, CEO

PRESENTATION BY: Michele Richards, CEO

---

### *Action Item*

### **BACKGROUND**

In response to ongoing drainage issues on the east side of the Pacific Amphitheatre berm in the area between the restroom and the Skyhawk, the landscaping team developed a proposal for a potential solution which would involve creating a veterans serenity walk featuring a pathway, trees and other landscaping. The project was listed on the 2024 capital projects list. Near the end of 2021, the idea was presented to the Heroes Hall Veterans Foundation with a request to consider funding the project.

At the December 16, 2021 meeting, the Board of Directors considered a request to move the proposed Heroes Hall serenity walk project from the 2024 capital projects list to 2022, along with an offer from the Heroes Hall Veterans Foundation to contribute \$100,000 to the project. After discussion, the Board voted to move the project to the Facilities Committee to explore the proposed idea in more detail and provide the Board with more information.

Without incurring additional costs, staff engaged California Construction Authority (CCA) who developed an estimate of \$30,920 for CCA to provide project administrative services to work with a landscape architect to develop a scope of work and three conceptual designs for the serenity walk. In an effort to move the project forward sooner, the Heroes Hall Veterans Foundation agreed to assume the cost of the initial LOU in the amount of \$30,920, and the Board approved.

Staff has worked with CCA and the landscape architect to develop three design options (one at \$300,000, a second at \$400,000 and the third at \$500,000) at 30% completion as requested by the Board. The concept drawings for the three options are attached and all include the following base elements:

- Solutions for the ongoing drainage issues
- Pacific Amphitheatre berm fence repair/replacement
- An area to honor service dogs
- Special plantings to honor Purple Heart recipients

Following are highlights of each option:

Option #1 – Minimal (\$300,000)

In addition to the base elements, this option includes:

- A decomposed granite (DG) pathway
- Minimal trees, shrubs and other landscaping
- No additional Walk of Honor monuments

Option #2 – Middle (\$400,000)

In addition to the base elements, this option includes:

- A pathway of pavers
- Entry monument
- 7 additional Walk of Honor monuments and 6 additional pillars
- Increased landscaping

Option #3 – High End (\$500,000)

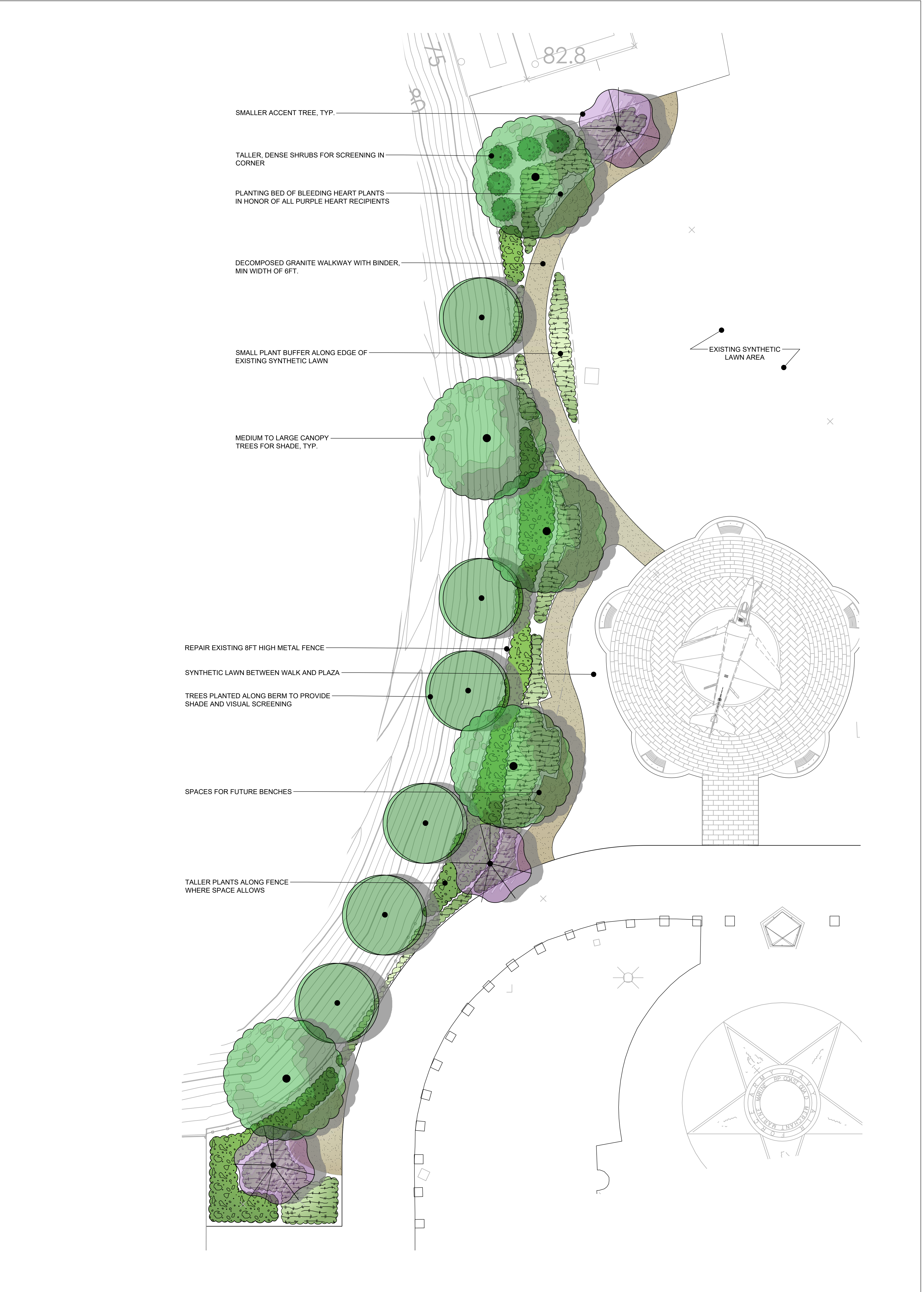
In addition to the base elements, this option includes:

- Lighting
- Wall to conceal back-of-house elements near restroom
- Water feature wall
- Seating area
- 9 additional Walk of Honor monuments and 11 additional pillars
- Benches along the pathway

The next steps would include entering into LOU #2 with CCA to finalize the plans and specifications, develop a bid package, put the project out to bid, then award the project and begin construction. If approved, the construction could begin as early as mid-October.

## **RECOMMENDATION**

It is staff's recommendation that the Board approve Option #2 with the ability to add some additional elements from Option #3 as bid alternatives (i.e., lighting and a water feature), and that the Board provide direction to staff on the timing and next steps.

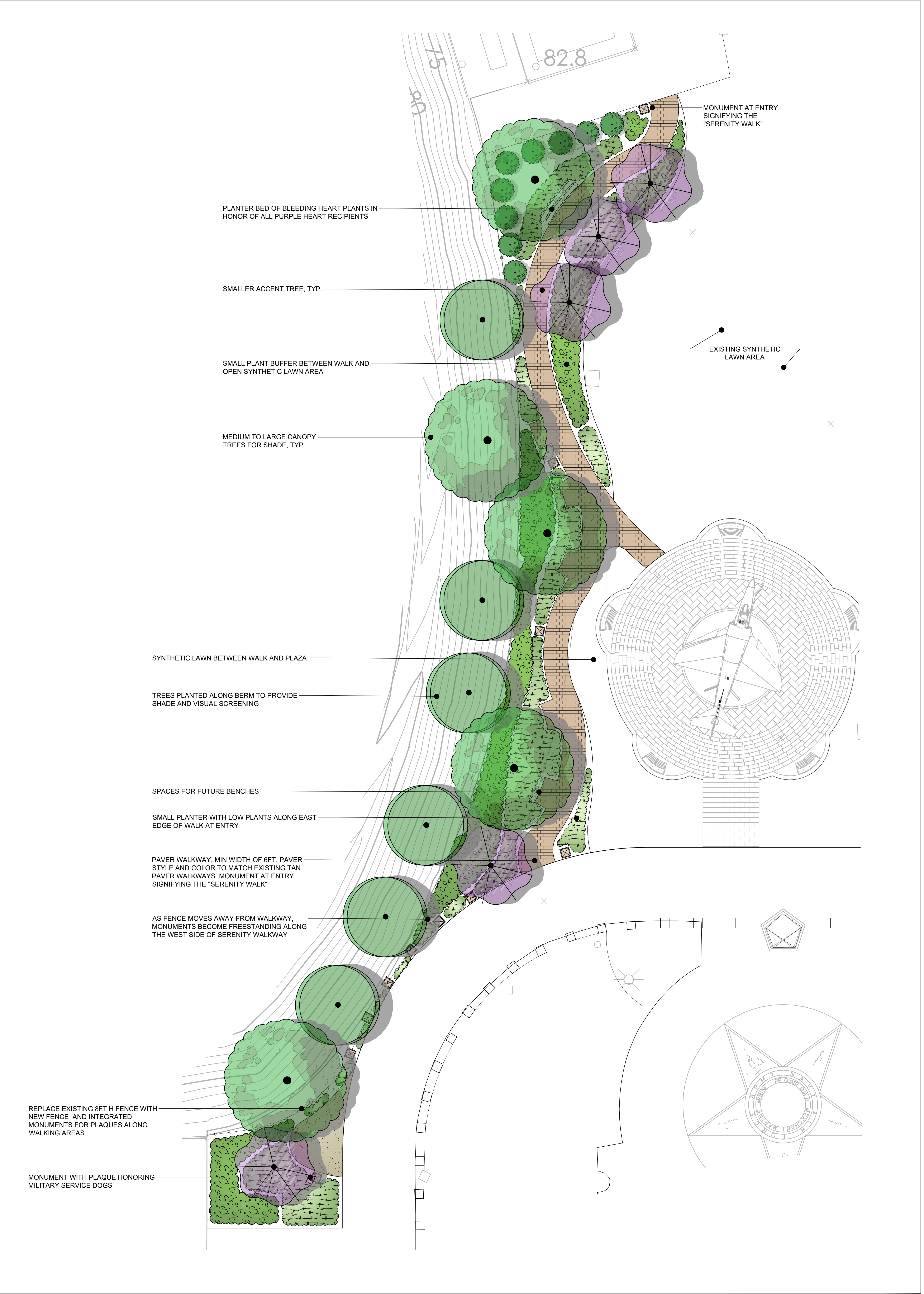


CONCEPTUAL LANDSCAPE PLAN  
- **OPTION 1** -  
SERENITY WALK AT HEROES HALL  
ORANGE COUNTY FAIR AND EVENTS CENTER

JASON GORSKI  
LANDSCAPE ARCHITECT  
CRLA #5093  
916.799.9349  
jason@jgorskidesign.com

0' 10' 20' 30'  
SCALE: 1" = 10'-0"





SMALLER ACCENT TREE, TYP.

SMALLER ACCENT TREE, TYP.

WALLS SHALL BE USED TO RETAIN SOIL TO ALLOW FOR RAISED PLANTING ALONG BACKSIDE OF WALL. EXISTING UTILITY GATE SHALL BE RELOCATED TO SECURE BOTH AREAS

CASCADING WATER WALL - WALL SHALL BE TEXTURED TO PROVIDE RIPPLING OF WATER AS IT CASCADES DOWN TO RIVER COBBLE AND BELOW-GRADE BASIN.

OPEN PLAZA-STYLE GATHERING AREA WITH MOVABLE TABLES AND CHAIRS

WATER FEATURE WING WALLS, 8FT H TO MATCH FENCE, BLEEDING HEART PLANTINGS ALONG BASE OF EACH WING IN HONOR OF ALL PURPLE HEART RECIPIENTS

AS SERENITY WALK MOVES CLOSER TO FENCE, FREESTANDING MONUMENTS INTEGRATE BACK INTO FENCE AND ANCHOR WING WALLS OF THE WATER FEATURE

MEDIUM TO LARGE CANOPY TREES FOR SHADE, TYP.

PLANTING BUFFER BETWEEN WALK AND PLAZA SHALL BE LOW, AS TO NOT DETRACT FROM MONUMENT, YET PROVIDE A SENSE OF SEPARATION

TREES PLANTED ALONG BERM TO PROVIDE SHADE AND VISUAL SCREENING

BENCHES FOR RESTING AND CONTEMPLATION

USE SIMILARLY STYLED COLUMNS FOR FENCE WHEN IT IS IN THE BACKGROUND

PAVER WALKWAY, MIN WIDTH OF 6FT, PAVER STYLE AND COLOR TO MATCH EXISTING TAN PAVER WALKWAYS. MONUMENT AT ENTRY SIGNIFYING THE "SERENITY WALK"

AS FENCE MOVES AWAY FROM WALKWAY, MONUMENTS BECOME FREESTANDING ALONG THE WEST SIDE OF SERENITY WALKWAY

REPLACE EXISTING 10FT H FENCE WITH NEW FENCE AND INTEGRATED MONUMENTS FOR PLAQUES ALONG WALKING AREAS

MILITARY SERVICE DOG HONORARY SPACE:  
-MONUMENT WITH PLAQUE  
-BENCH

MONUMENT AT ENTRY SIGNIFYING THE "SERENITY WALK"

EXISTING SYNTHETIC LAWN AREA



6FT BENCH, METAL AND IPE WOOD (WITH AND WITHOUT BACK)



TABLE AND CHAIRS, CHIPMAN SERIES BY LANDSCAPE FORMS

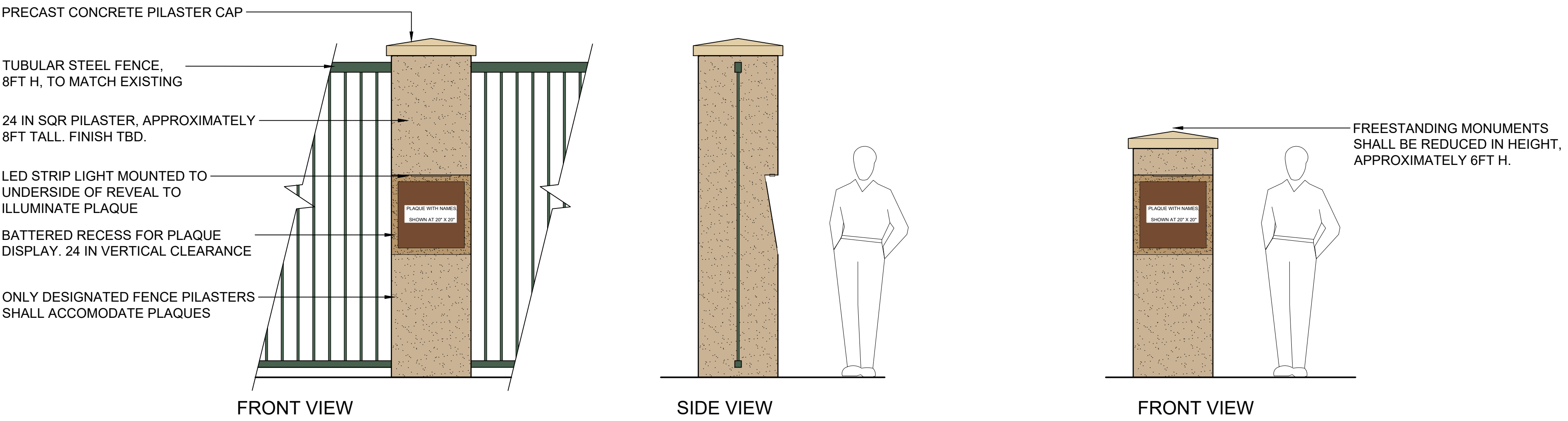


PAVERS - EXISTING STYLE AND COLOR



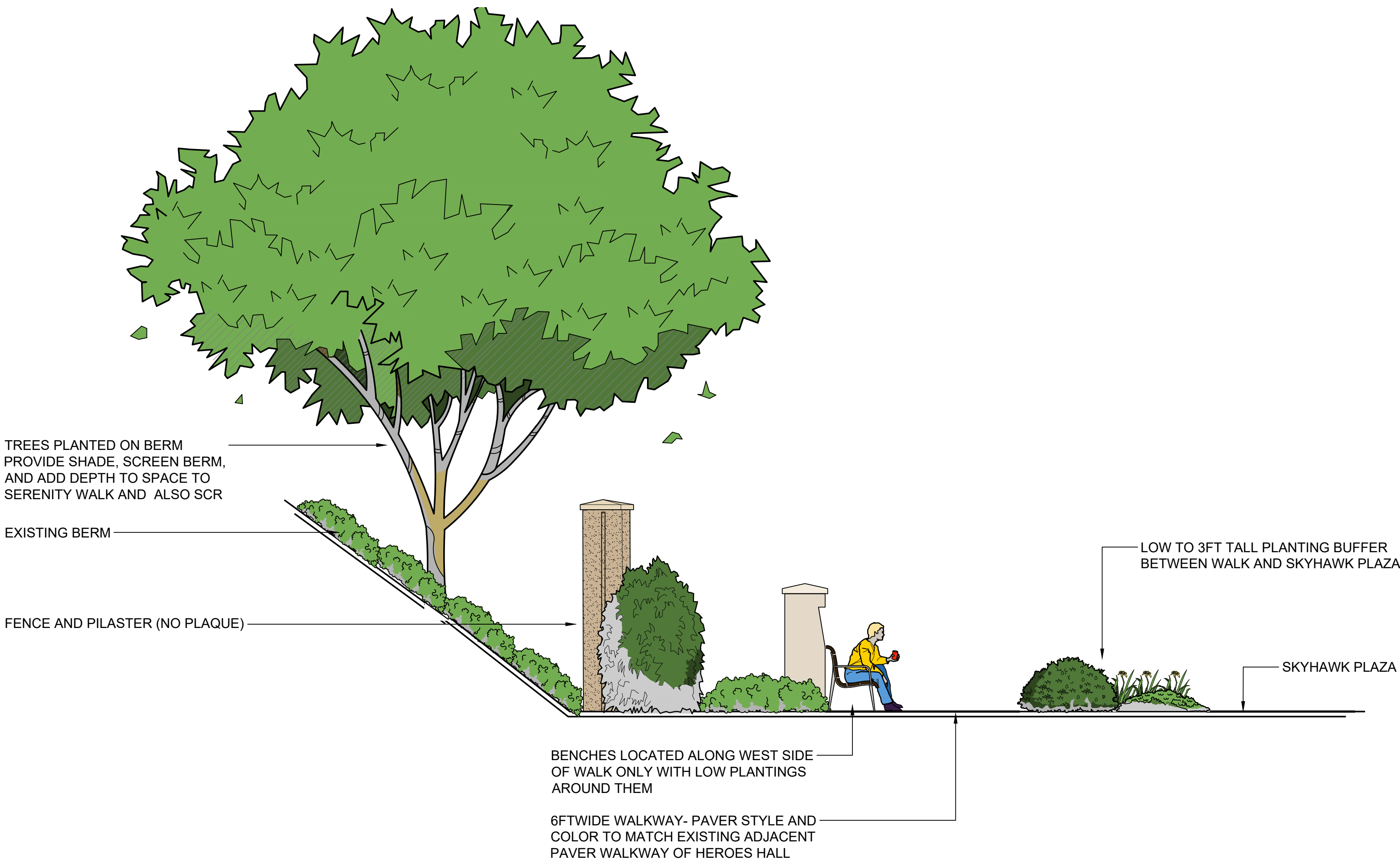
MONUMENTS FOR PLAQUE DISPLAY

ELEVATIONS



SECTION ACROSS PATH FROM BERM TO SKY HAWK PLAZA  
VIEW NORTH

SECTION



WATER WALL AND PLAZA  
VIEW WEST, FROM LAWN

ELEVATION

