

VENT GAUGE POD KIT, 2006-2015 XX-XXXXXX



Thanks for purchasing our Vent Gauge Pod Kit. If you have any questions during installation or suggestions for improvement to the product or the instructions - please don't hesitate to call or email.

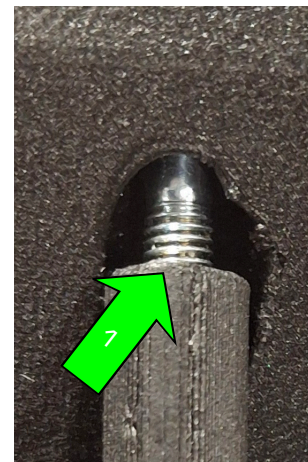
WARNING: Not everyone can perform every installation. It is critical that you be honest with yourself in regards to your ability. We're more than happy to help, but there are only so many things we can do from the other end of a phone / computer. If in doubt, discuss the install with us before you dive in. Improper installation could cause injury and / or death!

Required tools:

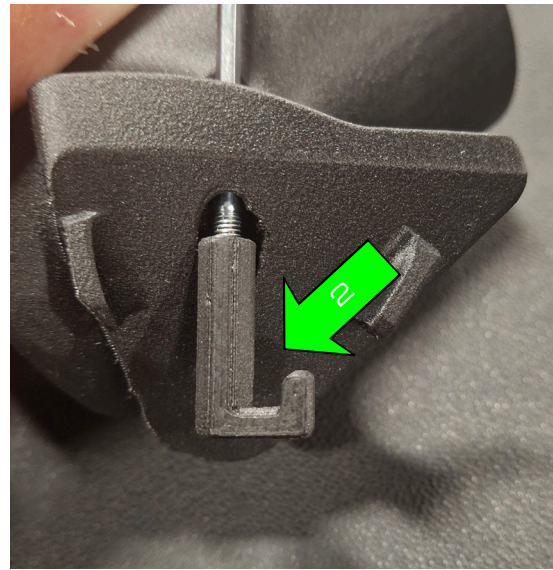
- 2.5mm Allen tool
- Electrical tape

Note: this gauge pod is held in place by securing to a plastic vent slat. Bear this in mind during the install, making sure not to put a lot of pressure on the gauge pod as that could damage the vent slat. The defrost vent on NCs is molded into the dash and can't be replaced!

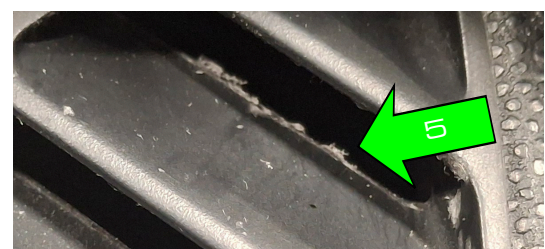
1. Begin by test-fitting the gauge you plan to mount into the gauge pod off the car. The gauge pod is printed to have a snug fit on a standard 2 1/16" gauge. However, variances in gauges can result in a slightly loose fit. If the gauge has a loose fit, add some electrical tape to the circumference of the gauge mounting surface. You'll want the fit to be just snug enough that the gauge will stay put but can still be installed and rotated into the desired position with minimal force. Once satisfied with the fit, remove the gauge. It is recommended to have all of your gauge wiring and/or plumbing in place before installing the gauge pod to prevent the risk of bumping the gauge pod and damaging the mounting slat.
2. Pass the supplied M3 socket head bolt through the gauge body and into the vent hook piece as shown. Use a 2.5mm Allen tool to tighten the bolt until only 6-7 threads are showing (1).



3. With the hook rotated as shown (2), slip the hook into the second slot back from the base of the windshield (3). Fully seat the gauge pod into position, and using the 2.5mm Allen tool, rotate the bolt a 1/4 turn (90°) so the hook is pointing down and is in position to grab onto the vent slat (4). Pull the gauge pod up so the hook is fully engaged with the vent slat and tighten down the M3 bolt until the gauge is close to fully seated. Once close, wiggle the gauge pod while tightening the M3 bolt. There will be no distinct change in the resistance of turning the bolt, so were just aiming for the gauge pod to be stable. Remember, we're attaching to plastic, so if you're trying too hard there will always be some movement.



4. With the gauge pod in place, you can now finish the gauge installation. Remember to take extra care when installing the gauge to prevent damage to the vent slat. It's not uncommon after installing the gauge to need to slightly tighten the bolt once more to snug it up.
5. If you remove the gauge for good, you may be left with slight deformation "flakes" of the bottom of the vent slat. An exacto knife can be used to remove the "flakes" shown (5).



Note: If you go to remove the gauge, be sure to only loosen the bolt enough to unhook it from the vent. If you unthread it all the way it could drop into the vent and could be difficult to remove.