



OSU Forensics Team,
Oregon State University, 209 Shepard Hall, Corvallis, Oregon 97331-6199
T 541-737-8230 | F 541-737-4443 | <http://oregonstate.edu/groups/forensics/>

November 2, 2012

Dear Colleagues,

As we push our way through the Fall term, OSU is busy making plans for the 9th Annual Earl Wells Memorial Speakeasy to be held on the beautiful Oregon State University campus on Saturday-Sunday, February 23-24, 2013.

As with previous years, our tournament is part of a weekend of forensics events being held along the I-5 corridor. On Friday, February 22, the AFA-NIET Regional Qualifier will be held at Lewis and Clark College. Even schools that are not officially a part of the AFA (or planning to attend the NIET) are invited. On the same dates as our tournament, the Mark O. Hatfield Tournament at Willamette University is tentatively scheduled to be offering British Parliamentary Debate.

All three schools are within reasonable distance of each other. Schools from inside and outside the region can have their students participate in five preliminary rounds of IEs in one weekend. They also have the choice to take part in Worlds or IPDA debate (with a split squad being possible given that our school and Willamette are less than an hour from each other). The goal is to provide schools with the widest variety of options to suit their particular needs.

For our part, we are going to offer IPDA debate and Individual Events in a convenient and stress free (we hope!) two-day tournament format.

The tournament will feature:

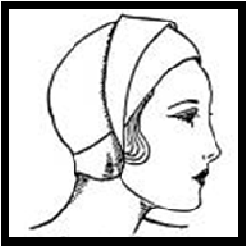
- Five preliminary rounds of IPDA debate with Bronze/Silver/ Gold elimination rounds
- Two preliminary rounds of AFA events
- The *positively* cringe-inducing event, Bad Interp
- A top notch tab room staff
- The Jeanne Hartman Popovich Debate Speaker Award
- The Minette Phillips Overall Speaker Award
- The Pentathlon Award
- (Somewhat) healthy snacks throughout the tournament
- The Coaches' Lounge for time away from the lil' ones
- And much, much more!

This tournament supports the goals of the Northwest Intercollegiate Debate League (NIDL), the Greater Portland Intercollegiate Debate League (GPIDL), and the International Public Debate Association (IPDA). We believe that debate is a public communication event. Our tournament reflects this philosophy.

We hope you'll join us or our colleagues in Portland and Salem.

Sincerely,

Mark Porrovecchio, Director of Forensics and IPDA Regional Director for the Northwest
Kori Thornburg, Assistant Coach



9th Annual Earl Wells Memorial Speakeasy
Oregon State University
February 23-24, 2013

ENTRIES:

Schools must submit entries via www.forensicstournament.net. Entry deadline: **Tuesday, February 19th**. We reserve the right to restrict school entries in cases where they do not bring enough judges (see below).

FEES:

Please make checks payable to: **Oregon State University Foundation c/o OSU Forensics**. We cannot accept checks made out to any other entity. Fees will be assessed at 5:00pm on **Wednesday, February 20th**. After that date, no adds, only drops.

School Fee	\$40
Individual Events (per slot)	\$8
IPDA	\$35
Uncovered IE (1:6)	\$15 (per uncovered slot)
Uncovered IPDA (1:2)	\$75 (per uncovered debater)

JUDGING:

We would rather have your judges than your money. Judges can be fairly scarce in Corvallis. So be forewarned that if you don't bring judges, there will be lots of lay judges. We'll train them, but who knows!?! I also recognize that we are aggressive in our use of judges, particularly when we have to double-flight IPDA. Whenever possible, we will try to give judges breaks. But, again, we are dealing with a limited judging pool. We appreciate your understanding.

PARKING:

Parking is free on Saturdays and Sundays. But please pay attention to posted signs regarding restricted spots. You get a ticket . . . well, you get a ticket. There are two parking lots—one behind Dearborn and one behind Gilbert—that are directly off of NW Monroe Ave. and within easy walking distance of the main gathering places for the tournament (see map link: <http://oregonstate.edu/campusmap/>).

SMOKING:

Please note that, as of Sept. 1, 2012, the OSU campus is non-smoking. If you want to smoke, you will need to go off campus on NW Monroe Ave. But please dispose of your butts. Smokers are already stereotyped. Don't add fuel to the fire (so to speak). And keep this in mind: if Mark can do it, so can you.

REGISTRATION/COMMON AREA/PREP AREAS:

Registration/tab will be SHEP 209; the Coaches' Lounge will be in SHEP 202; the common/ballot return and pick-up area will be GILB 124; IPDA topic announcements will be in GILB 224; and extemp prep will be in DEAR 118. Please refrain from using rooms that are not marked as reserved for the tournament. And make sure to enact a "we are leaving, so we will clean up" approach to your debris.

FOOD:

We will provide a range of snacks on both days, as well as a coffee/tea service on both mornings. NW Monroe Ave. also provides quick access to a variety of food and drink options.

LODGING:

There are a number of options in town for lodging. Please note that we do not have contracted rates with any of the motels/hotels in town. In many cases, you can find excellent deals online.

Motel 6: 935 NW Garfield Avenue, (541) 758-9125 Super 8: 407 NW Second Street, (541) 758-8088

Days Inn: 1113 NW 9th Street, (541) 754-7474 Budget Inn: 1480 SW 3rd Street, (541) 752-8756

Econo Lodge: 345 NW 2nd Street, (541) 752-9601

Hilton Garden Inn: 2500 SW Western Blvd., (541) 752-5000

Best Western Grand Manor Inn: 925 NW Garfield Avenue, (541) 758-8571

INDIVIDUAL EVENTS:

We will offer the eleven standard AFA events with AFA rules and Bad Interp. Please use good judgment in assigning students to novice and open divisions; we trust you and the decisions that you make (even though certain schools have been entering students with significant amounts of high school competition experience in novice . . . you know who you are). Students may enter **three events per pattern**. Students are responsible for getting to all rounds on time. We reserve the right to collapse any event to adjust for entry size, room availability, or judge availability.

- **PATTERN A:** Impromptu (N/O), Informative (N/O), Prose (N/O), Duo (O), ADS (O), Bad Interp (O)
Bad Interp: Speakers will attempt to satirize the conventions of oral interp as practiced in the forensics realm through the use of truly hideous, overused, or just plain trite material. The intent of the event is humor (Sidebar: Perhaps the best way to learn why you shouldn't do some things is to do it on purpose to see how silly it really is. There is education in humor). The time limit is 8 minutes.
- **PATTERN B:** Extemp (N/O), Persuasion (N/O), POI (O), Poetry (O), CA (O), DI (N/O)
Please note: Students entered in Extemp are responsible for making it to IPDA draw on time and we can make no promises that there will be internet access.

IPDA DEBATE:

IPDA: "One-on-One" debate similar to L-D debate. Time limits: 5-2-6-2-3-5-3. Central topic announcement with five topic strike. 30 minutes preparation time from *beginning* of draw. We will offer Novice (open to students who have competed in less than ten debate tournaments, high school or college, regardless of type/style of said debate) and Varsity (open to any student from the 7th grade through undergraduate) divisions with Bronze/Silver/Gold out rounds (12 teams advancing to Bronze in each division *regardless* of size) and awards for the top five speakers in each division. We are scheduled to double flight rounds and will adjust the schedule if size permits.

Please note: NPDA and BP debaters are warmly welcomed! But this tournament is endorsing "Aff Resolution Interpretation Disclosure": if the Neg chooses to ask how the Aff plans to interpret a given resolution, the Aff is obligated to tell them. This is a matter of courtesy/decorum and allows both sides to make the most out of prep time. Please inform your students and adjust your coaching/judging in advance. Our region is still new to IPDA. But we should enact the best practices of IPDA if we want to foster goodwill for all who compete in the event.

For more information on IPDA, see: www.ipdadebate.info.

SPECIAL AWARDS:

The Earl Wells Memorial Speakeasy celebrates the rich history of forensics and its continued vitality. As such, we offer several special awards:

- The Jeanne Hartman Popovich Debate Speaker Award will be given to the top *varsity* debate speaker at the tournament;
- The Minette Phillips Overall Speaker Award will recognize the top student competing in a minimum of three *open* individual events and *varsity* debate;
- A special Lloyd Crisp Critics Award will be given out this year (details to follow at the tournament); and
- The Pentathlon Award will recognize the top student competing in five or more *open* individual events.

The winners of the first three awards will receive a plaque and permanent remembrance on a perpetual trophy housed in the Department of Speech Communication.

This tournament will abide by the AFA Code of Ethics.

TENTATIVE SCHEDULE

Saturday, February 23

9:00-9:45	Registration (Shepard 209) Snacks (Gilbert 124)
10:00	Rd 1 IPDA [Flight One—Draw @ 10:00; Debate @ 10:30 Flight Two—Draw @ 10:30; Debate @ 11:00]
11:45	Rd 2 IPDA [Flight One—Draw @ 11:45; Debate @ 12:15 Flight Two—Draw @ 12:15; Debate @ 12:45]
1:15	Extemp Draw (Dearborn 118)
1:30	Rd 1 Pattern B
3:00	Rd 3 IPDA [Flight One—Draw @ 3:00; Debate @ 3:30 Flight Two—Draw @ 3:30; Debate @ 4:00]
4:30	Extemp Draw
4:45	Rd 2 Pattern B
6:15	Rd 4 IPDA [Flight One—Draw @ 6:15; Debate @ 6:45 Flight Two—Draw @ 6:45; Debate @ 7:15]

Sunday, February 24

8:00	Snacks (Gilbert 124)
8:30	Rd 5 IPDA [Flight One—Draw @ 8:30; Debate @ 9:00 Flight Two—Draw @ 9:00; Debate @ 9:30]
10:00	Round 1 Pattern A
11:30	Round 2 Pattern A
1:00	Lunch
1:30	IPDA Bronze Round Rd
3:00	Finals—Pattern B
4:30	Finals—Pattern A
6:00	IPDA Gold/Silver Round
ASAP	Awards (Gilbert 124)

PATTERN A: Impromptu (N/O), Informative (N/O), Prose (N/O), Duo (O), ADS (O), Bad Interp (O)

PATTERN B: Extemp (N/O), Persuasion (N/O), POI (O), Poetry (O), CA (O), DI (N/O)