



OSU Forensics Team,
Oregon State University, 209 Shepard Hall, Corvallis, Oregon 97331-6199
T 541-737-8230 | F 541-737-4443 | <http://oregonstate.edu/groups/forensics/>

December 12, 2011

Dear Colleagues,

As we finish out the fall term, OSU is busy making plans for the 8th Annual Earl Wells Memorial Speakeasy to be held on the beautiful Oregon State University campus on Saturday-Sunday, February 25-26, 2012.

As with last year, our tournament is part of a weekend of forensics events being held along the I-5 corridor. On Friday, February 24, the AFA-NIET Regional Qualifier will be held at Lewis and Clark College. Even schools that are not officially a part of the AFA (or planning to attend the NIET) are invited. On the same dates as our tournament, the Mark O. Hatfield Tournament at Willamette University will be offering British Parliamentary Debate.

All three schools are within reasonable distance of each other. Schools from inside and outside the region can have their students participate in five preliminary rounds of IEs in one weekend. They also have the choice to take part in Worlds or IPDA debate (with a split squad being possible given that our school and Willamette are less than an hour from each other). The goal is to provide schools with the widest variety of options to suit their particular needs.

For our part, we are going to offer IPDA debate and Individual Events in a convenient and stress free (we hope!) two-day tournament format.

The tournament will feature:

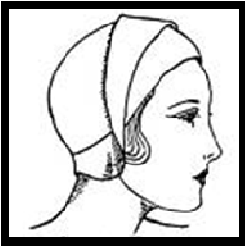
- Five preliminary rounds of IPDA debate with Bronze/Silver/ Gold elimination rounds
- Two preliminary rounds of AFA events
- The *positively* cringe-inducing event, Bad Interp
- A top notch tab room staff of Mike Dugaw and Shannon Valdivia
- The Lloyd Crisp Critic Award
- The Jeanne Hartman Popovich Debate Speaker Award
- The Minette Phillips Overall Speaker Award
- The Pentathlon Award
- (Somewhat) healthy snacks throughout the tournament
- And much, much more!

This tournament supports the goals of the Northwest Intercollegiate Debate League (NIDL), the Greater Portland Intercollegiate Debate League (GPIDL), and the International Public Debate Association (IPDA). We believe that debate is a public communication event. Our tournament reflects this philosophy.

We hope you'll join us or our colleagues in Portland and Salem.

Sincerely,

Mark Porrovecchio, Director of Forensics and IPDA Regional Director for the Northwest
Kori Thornburg, Assistant Coach
Forest Ledbetter, Assistant Coach



8th Annual Earl Wells Memorial Speakeasy
Oregon State University
February 25-26, 2012

FEES:

Please make checks payable to: **Oregon State University Foundation c/o OSU Forensics**. We cannot accept checks made out to any other entity. Fees will be assessed at 5:00pm on **Wednesday, the 22nd**. After that date, no adds, only drops.

School Fee	\$40
Individual Events (per slot)	\$8
IPDA	\$25
Uncovered IE (1:6)	\$15 (per uncovered slot)
Uncovered IPDA (1:2)	\$60 (per uncovered debater)

ENTRIES:

Schools must submit entries via www.forensicstournament.net. Entry deadline: **Tuesday, February 21st**. We reserve the right to restrict school entries in cases where they do not bring enough judges (see below).

We would rather have your judges than your money. Judges can be fairly scarce in Corvallis. So be forewarned that if you don't bring judges, they'll be lots of lay judges. We'll train them, but who knows!?!)

PARKING:

Parking is free on Saturdays and Sundays. But please pay attention to posted signs regarding restricted spots. You get a ticket . . . well, you get a ticket. There are two parking lots—one behind Dearborn and one behind Gilbert—that are directly off of NW Monroe Ave. and within easy walking distance of the main gathering places for the tournament (see map link: <http://oregonstate.edu/campusmap/>).

REGISTRATION/COMMON AREA/PREP AREAS:

Registration/tab will be SHEP 209; the Coaches' Lounge will be in SHEP 202; the common/ballot return and pick-up area will be GILB 124; IPDA topic announcements will be in GILB 224; and extemp prep will be in DEAR 118. Please refrain from using rooms that are not marked as reserved for the tournament (you know who you are . . .). And please enact a "we are leaving, so we will clean up" approach to your debris.

FOOD:

We will provide a range of snacks on both days. NW Monroe Ave. also provides quick access to a variety of food and drink options.

HOTELS:

There are a number of options in town for lodging. Please note that we do not have contracted rates with any of the motels/hotels in town. In many cases, you can find excellent deals online.

Motel 6: 935 NW Garfield Avenue, (541) 758-9125

Super 8: 407 NW Second Street, (541) 758-8088

Days Inn: 1113 NW 9th Street, (541) 754-7474

Budget Inn: 1480 SW 3rd Street, (541) 752-8756

Econo Lodge: 345 NW 2nd Street, (541) 752-9601
Hilton Garden Inn: 2500 SW Western Blvd., (541) 752-5000
Best Western Grand Manor Inn: 925 NW Garfield Avenue, (541) 758-8571

INDIVIDUAL EVENTS:

We will offer the eleven standard AFA events with AFA rules and Bad Interp. Please use good judgment in assigning students to novice and open divisions; we trust you and the decisions that you make. Students may enter **three events per pattern**. Students are responsible for getting to all rounds on time. We reserve the right to collapse any event to adjust for entry size, room availability, or judge availability.

- **PATTERN A:** Impromptu (N/O), Informative (N/O), Prose (N/O), Duo (O), ADS (O), Bad Interp (O)
Bad Interp: Speakers will attempt to satirize the conventions of oral interp as practiced in the forensics realm through the use of truly hideous, overused, or just plain trite material. The intent of the event is humor (Sidebar: Perhaps the best way to learn why you shouldn't do some things is to do it on purpose to see how silly it really is. There is education in humor). The time limit is 8 minutes.
- **PATTERN B:** Extemp (N/O), Persuasion (N/O), POI (O), Poetry (O), CA (O), DI (N/O)
Please note: Students entered in Extemp are responsible for making it to IPDA draw on time and we can make no promises that there will be internet access.

IPDA DEBATE:

IPDA: "One-on-One" debate similar to L-D debate. Time limits: 5-2-6-2-3-5-3. Central topic announcement with five topic strike. 30 minutes preparation time from *beginning* of draw. We will offer Novice and Varsity divisions with Bronze/Silver/Gold out rounds (8 teams advancing to Bronze regardless of size) and awards for the top five speakers in each division. We are scheduled to double flight rounds and will adjust the schedule if size permits. For more information on IPDA, see: www.ipdadebate.info.

Please note: NPDA and BP debaters are warmly welcomed! But this tournament is endorsing "Aff Resolution Interpretation Disclosure": if the Neg chooses to ask how the Aff plans to interpret a given resolution, the Aff is obligated to tell them. This is a matter of courtesy/decorum and allows both sides to make the most out of prep time. Please inform your students and adjust your coaching in advance. Our region is new to IPDA. But we should enact the best practices of IPDA if we want to foster goodwill for all who compete in the event.

SPECIAL AWARDS:

The Earl Wells Memorial Speakeasy celebrates the rich history of forensics and its continued vitality. As such, we offer several special awards:

- The Jeanne Hartman Popovich Debate Speaker Award will be given to the top debate speaker at the tournament;
- The Minette Phillips Overall Speaker Award will recognize those competing in a minimum of three individual events and debate;
- The Lloyd Crisp Critics Award will be given to the best critic at the tournament (during the tournament, a list of judges will be made available to students and votes will be taken); and
- The Pentathlon Award will recognize those competing in five or more individual events.

The winners of the first three awards will receive a plaque and permanent remembrance on a perpetual trophy housed in the Department of Speech Communication.

This tournament will abide by the AFA Code of Ethics.

TENTATIVE SCHEDULE

Saturday, February 25

9:00-9:45	Registration (Shepard 209) Snacks (Gilbert 124)
10:00	Rd 1 IPDA [Flight One—Draw @ 10:00; Debate @ 10:30 Flight Two—Draw @ 10:30; Debate @ 11:00]
11:45	Rd 2 IPDA [Flight One—Draw @ 11:45; Debate @ 12:15 Flight Two—Draw @ 12:15; Debate @ 12:45]
1:30	Extemp Draw (Dearborn 118)
1:55	Rd 1 Pattern B
3:15	Rd 3 IPDA [Flight One—Draw @ 3:15; Debate @ 3:45 Flight Two—Draw @ 3:45; Debate @ 4:15]
5:00	Extemp Draw
5:15	Rd 2 Pattern B
6:45	Rd 4 IPDA [Flight One—Draw @ 6:45; Debate @ 7:15 Flight Two—Draw @ 7:15; Debate @ 7:55]

Sunday, February 26

8:00	Snacks (Gilbert 124)
8:30	Rd 5 IPDA [Flight One—Draw @ 8:30; Debate @ 9:00 Flight Two—Draw @ 9:00; Debate @ 9:30]
10:00	Round 1 Pattern A
11:30	Round 2 Pattern A
1:00	Lunch
1:30	IPDA Bronze Round Rd
3:00	Finals—Pattern B
4:30	Finals—Pattern A
6:00	IPDA Gold/Silver Round
ASAP	Awards (Gilbert 124)

PATTERN A: Impromptu (N/O), Informative (N/O), Prose (N/O), Duo (O), ADS (O), Bad Interp (O)

PATTERN B: Extemp (N/O), Persuasion (N/O), POI (O), Poetry (O), CA (O), DI (N/O)