

2014 Portland State University Intervarsity Debate Tournament

January 31-February 2 2014

Hosted by

Portland State University Debate Union

Portland, Oregon

Dear Friends and Colleagues,

On behalf of the Portland State Debate Union, I would like to invite you to the **2014 Portland State IV**, to be hosted on the Portland State Campus in downtown Portland, Oregon **February 1-2, 2014**. Our tournament will include 5 preliminary rounds. We will break to semi-finals unless registration exceeds 64 teams, in which case we will break to quarter-finals so as to break no more than 25% of the field. Novice teams will break directly to a novice final which will take place during the first open out-round.

We have selected an excellent adjudication team who bring with them experience from the Canadian, British and American Parliamentary (APDA) circuits. Our Tournament Director, Jacob Gran, has run the IV for the past two years and our Tab Master, Chris Richter, has run tab at major tournaments including USUs.

Our goal is to create a competitive, inclusive and relevant competition that fosters community and spreads the BP format. All schools that are new to BP are entitled to a registration discount and are welcome to attend our public debate on Friday, January 31st at 7pm.

We will host a dinner and social on Saturday night immediately following the conclusion of round 5.

Direct any inquiries to psudebate@gmail.com

Hope to see you in February!

Lindsay Bing

Coach, Portland State Debate Union

Adjudication Team (A-Team) and Organization Committee



Kaja Marinic – University of British Columbia

Breaking speaking at WUDC Berlin 2013

Semifinalist and 4th Speaker at Hart House N.A. Universities Debating Championships 2013

Deputy Chief Adjudicator of the Western Canadian Novice Championships 2012

Deputy Chief Adjudicator of the Western Canadian Parliamentary Championships 2012

Deputy Chief Adjudicator of the Simon Fraser University IV 2012



Megan Elsayed – Brandeis University

Semifinalist at the Oxford IV 2012

APDA Team of the Year 4th Place 2012,

Top Speaker, Kings College IV 2012

Also all of this: <http://www.apdaweb.org/results/debater/1552>

(Lindsay doesn't understand APDA rankings)



Lindsay Bing – University of London, Portland State University

Semifinalist at the European Universities Debating Championship (Belgrade) 2012

8th Speaker at EUDC Belgrade 2012

Finalist, Kings College London Open 2012

Finalist, University College London Open 2012

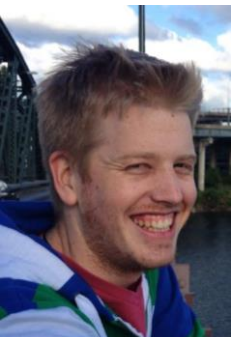
Semifinalist, Cambridge IV 2011

Chief Adjudicator at Warwick IV 2012

Deputy Chief Adjudicator Edinburgh Cup 2012 and Hull IV 2012

Breaking Judge at USUDC 2013, EUDC Manchester 2013

Jacob Gran
Tournament Captain



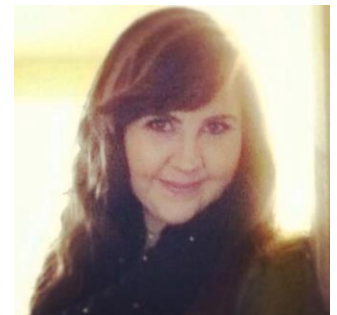
Braedon Lehman
First Mate



A.J. Markow
Communications Commandant



Amanda Clarke
Socials Admiral



Tournament Information

Schedule:

Friday, January 31 (optional)

7:00 Public Debate & Informal Social

Saturday, February 9

8:00 am Registration and Coffee

9:00 am Briefing

9:15 am Round 1

11:15 am Round 2

Lunch Break at conclusion of Round 2

2:00 pm Round 3

4:00 pm Round 4

6:00 pm Dinner (provided) and social at Lucky Lab Pizza & Brewing Co.

Sunday, February 10

8:30 am Breakfast (optional)

9:00 am Roll Call

9:15 am Round 5

11:15 am Semi-Finals & Novice Final

Speaker Awards immediately following Semi-Finals and Novice Finals

2:00 pm Open Final

Registration

All entries must be submitted at www.forensictournament.net or via e-mail to psudebate@gmail.com. Please include the number of teams, team member names, and names of adjudicators, and any novice designations. You will receive confirmation of your registration within 48 hours.

We will confirm novice designation at check-in on Saturday morning.

Please make checks out to: Portland State University

*Please note that for this tournament Novice is defined as a person who is in their first year of collegiate debate competition, not just their first year competing in the BP format.

Fees

No School Fees Assessed

Team Fee - \$70

Uncovered Team Fee - \$140 (N-1 Requirement)

Please contact Jacob Gran at psudebate@gmail.com with any registration fee queries.

Deadline for entries/drops is Friday, January 24th 2014.

Eligibility

This tournament is open to any undergraduate or graduate student seeking a degree in good-faith from an accredited academic institution. Hybrids are welcome with approval from the Adjudication Team.

Debate Rules

We will be using the WUDC rules which are nicely truncated and mildly adapted for EUDC Manchester 2013 which can be found on the registration website.

Mandatory POI: All speakers must take at least 1 POI during their speech. If the 6 minute mark hits and the speaker has not yet taken a POI (yet some were offered) they are mandated to take a POI at that time. If no one stands up to offer a POI at the 6 minute mark then the speaker may continue as normal.

All speeches will be 7 minutes in length.

15-minute prep, no electronic materials, no consulting with anyone other than your partner OR asking for clarification from the A-Team.

As mentioned in the briefing – there are no “automatic fourths” or “automatic firsts”.

Pairings

This tournament will feature 5 preliminary rounds of competition, a novice final, semi-final and final round. Quarter-finals will only be added should tournament entries exceed 60 teams.

As is common in international debate formats, it is possible that teams may face other teams from the same school in any given round, and to hit the same teams multiple times. We will probably be using Tournaman to tab this tournament.

The tournament will be run on computer to produce the pairings, positions, and judge panels. Once the pairings are produced, no changes will be made to teams, positions, or judges. All teams are guaranteed to get each position at least once through the preliminary rounds.

Judging and Clashes

All judges and institutions are responsible for reporting any clashes. All judges must inform the A-Team of any teams or institutions they are not capable of judging fairly. This includes but is not limited to: current and former institutions, former debate partners, former romantic partners, former or current family members and former or current secret government agency accomplices.

Consensus judging and oral adjudications will take place after each round, including the final preliminary round. Try to keep decisions and oral feedback to under 20 minutes. Should no consensus be met after 15 minutes has passed, the Chair should call a vote. In matters of a tie, the Chair's vote will hold more weight than that of the wings.

Equity

Equity is a way of ensuring that no participant, whether judge or competitor, is unfairly treated due to gender, ethnicity, nationality, disability, sexual orientation, gender identity, socio-economic status, or any other aspect of their personhood which is innate, essential, identity-forming or important.

There is a difference between being discriminatory and being a jerk. Being a jerk IS NOT a violation of equity. Being a misogynist IS a violation of equity.

If you, at any time during the tournament, feel that statements, comments or behavior from anyone else at the tournament is a violation of equity please consider the following.

1. Communicate with the person who has offended you by asking them "what do you really mean by that?" – sometimes people don't realize what they are saying – give them the benefit of the doubt and the opportunity to think about the implications of their words/behavior. This is also a great way to

have an open and educational discussion.

2. If you are uncomfortable or unable to speak with the offender, please speak with the Equity Officer of the tournament about how to resolve the issue.

3. Lodge a formal complaint with the Equity Officer.

Should the grievance be serious enough, the judge or participant may be removed from the competition and barred from its associated events.

Awards

Awards will be given to all elimination-round contestants, as well as the top 10 open speakers, and the top 3 novice speakers.

Travel Information

For those of you arriving by plane, you will want to fly into Portland International Airport (PDX). It is approximately 15 to 20 minutes from downtown Portland. A taxi will cost approximately \$40, or you can ride our light-rail system (The Max) for \$2.50, which will take you all the way to the PSU campus.

Light Rail

I would highly recommend using our light rail system to save you money and make our tournament more green. It is ridiculously cheap (about \$2.50 per person) and runs from about 5:00 AM to about 11:50 PM Monday through Friday.

The Red line runs from the Airport to Pioneer Square in downtown Portland. At Pioneer Square you can take either the Yellow or Green line straight to PSU (make sure you are heading south, it will say to PSU on the train). It gets off a few blocks from the hotel.

Here is the website to check times and routes, trains usually come every 15 minutes or less:
trimet.org/max/index.htm

Portland State University is an urban campus, located in downtown Portland, and is spread out over several city blocks. We will try to keep the tournament confined to three main buildings. The registration and general meeting area will be in the Smith Center, which is located at 1825 SW Broadway. Look for signs to guide you to registration

Driving

To get to PSU (from the airport); take I-205 South to I-84 West. From I-84, merge onto I-5

Southbound. From there, Merge onto the I-405 Northbound and take the 6th Ave. exit. Proceed three blocks, and turn left on Harrison Street. There you will see Parking Structure #1 on your left.

Parking: You can pay to park in Parking Structure #1 located at 1872 SW Broadway, which is directly across the street from the Smith Center. Parking is free after 7pm on Friday and very cheap during the day on Saturday. Parking in the structure is free overnight and on Sundays. Street parking is free overnight but enforced during the day on Saturday and Sunday.

University Place Hotel (see below) also offers guest overnight parking for \$12/night, or you can always try to find parking on the street.

Hotel

We recommend staying at the University Place Hotel located at 310 SW Lincoln Street, Portland, OR 97201, just 3 blocks from campus. To make reservations call 503-221-0140 or toll free at 1-866-845-4647. Please ask for the “Debate Tournament” room block. There is an \$89 deluxe room, which I would highly recommend, and a \$79 standard room rate. This includes a continental breakfast. More information about the University Place Hotel can be found at www.uplace.com.

Crash

Crash will be provided on a first-come, first-serve basis; with priority given to international teams. Please contact us at psudebate@gmail.com in advance if you think you will require crash.

Food

Please inform the tournament of any dietary restrictions. We can accommodate lactose-free, vegan and vegetarian requirements but cannot guarantee that all other requirements can be satisfied.

We will provide coffee and light breakfast on Saturday and Sunday as well as dinner on Saturday night.

The Social

On Saturday night of the tournament we will host an all-you-can-eat-so-long-as-it-lasts Pizza and Salad buffet at Lucky Labrador Beer Hall on 1945 NW Quimby. We will also hold a Pub Quiz for magnificent prizes. Dinner will be served at 7pm, and minors are welcome until 9pm. We are paying for the food, but all beverages (alcoholic or non-alcoholic) are on you!

The pub is accessible via the Street Car which costs about \$1/rider. We will provide directions at the tournament.