



CHIQUITA CANYON
A Waste Connections Company

April 27, 2026

California Regional Water Quality Control Board
Los Angeles Region
320 W. 4th Street, Suite 200
Los Angeles, California 90013
ATTN: Information Technology Unit

**Subject: Leachate Seep Report
Chiquita Canyon Landfill
WDRs Order No. R4-2018-0172
File No. 67-020**

Pursuant to MRP No. CI-6231 Section B.3.a, Chiquita Canyon, LLC (“Chiquita”) provides the following information regarding a seep discovered on April 20, 2026, during which approximately 1 1/2 cups of characteristically non-hazardous liquid associated with Group C seeped in the stormwater channel but did not reach either sedimentation basin. This is a conservative estimate based on visual observations by Chiquita staff. Chiquita maintains appropriate response materials, including fully stocked spill kits, and has trained staff on site to respond to spills, leaks, and seeps to prevent liquids from entering the stormwater system.

i. Map - A map showing the location(s) of seepage.

The seep occurred between grids 93 and 95, as indicated in **Attachment A**.

ii. Flow rate - An estimate of the flow rate.

The seep had a very low flow rate.

iii. Description - A description of the nature of the discharge (e.g., all pertinent observations and analyses).

On April 20, 2026, at approximately 2:30 p.m., a seep was observed between grids 93 and 95. Approximately 1 1/2 cup of liquid from the seep entered the stormwater channel but did not reach either sedimentation basin. The liquid came from the joints in the concrete of the stormwater channel. The liquid was dark brown in color with low viscosity and traveled with a very low flow rate.

April 27, 2026

Page 2 of 2

iv. Location – Location of sample(s) collected for laboratory analysis, as appropriate.

No sampling was conducted for this seep.

v. Corrective measures – approved (or proposed for consideration) by the Regional Board Executive Officer.

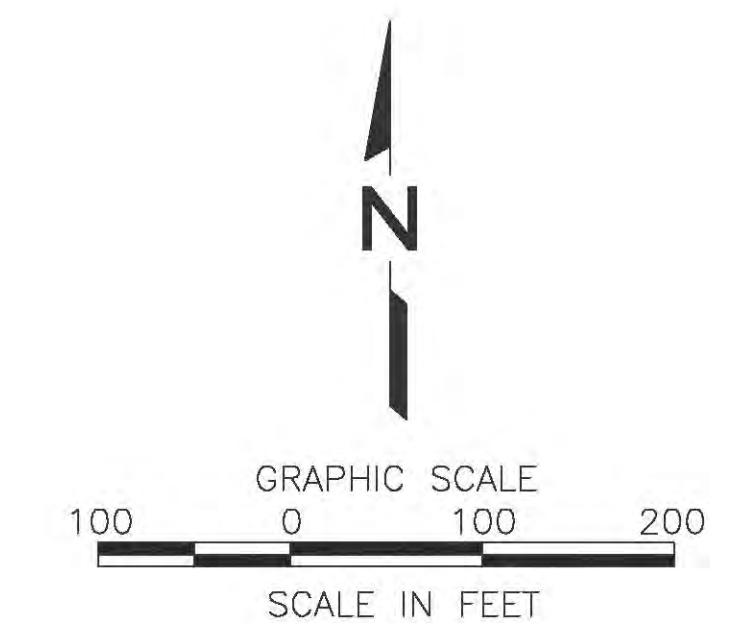
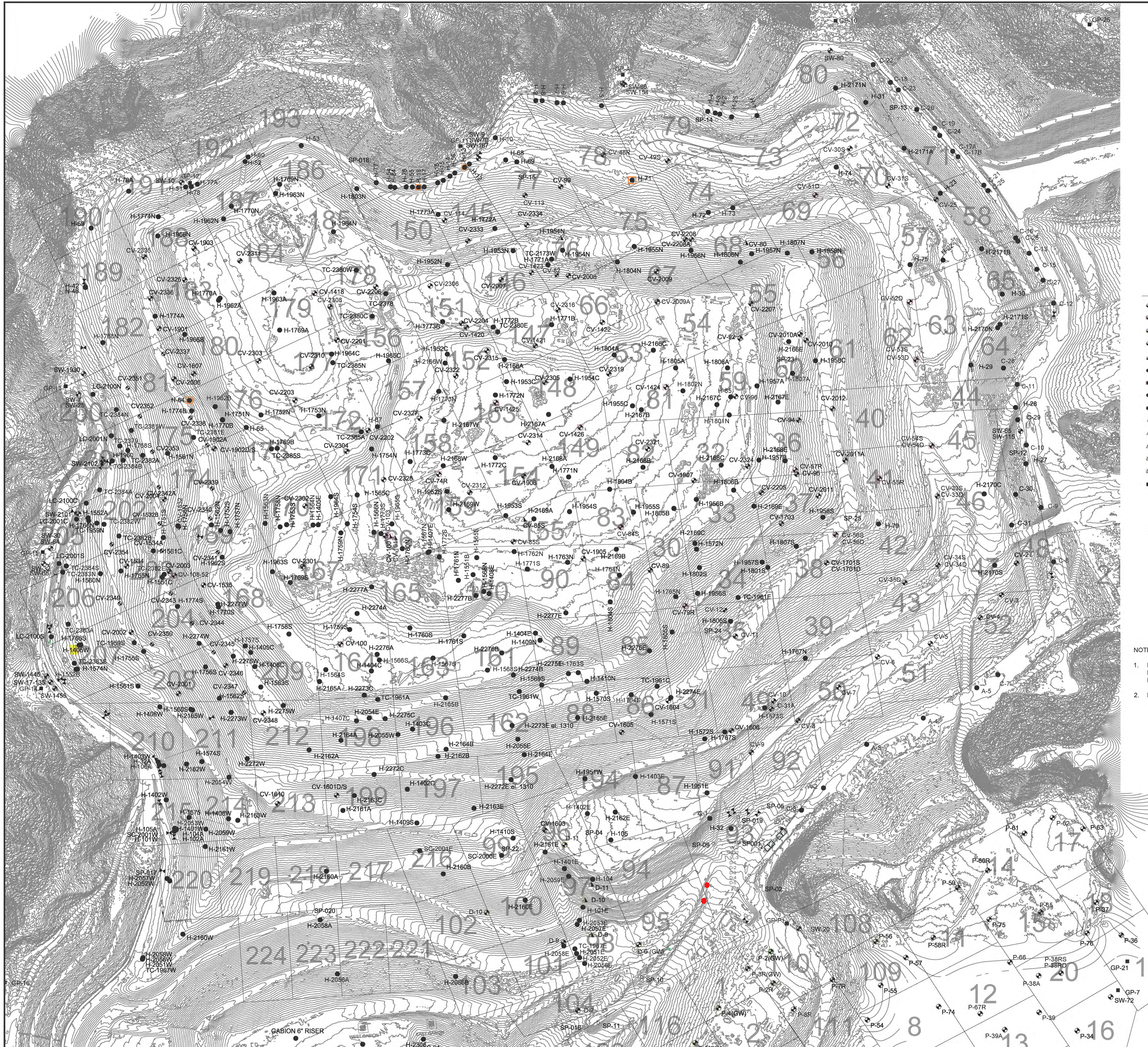
Upon discovery of the seep, Chiquita pressure washed the stormwater channel while applying vacuum to ensure the proper collection of all wash water. Chiquita also added silicon to the cracks and joints in the stormwater channel to help contain the liquid and prevent future seeps in the area. Cleanup commenced immediately and was cleaned by hand within 2 hours. The pressure washing of the stormwater channel and adding of silicon added an additional 15 hours to the cleanup, bringing the total clean up time to approximately 17 hours. Portions of the seep reappeared on Thursday, April 23 and Friday, April 24, producing a de minimis amount of liquid—less than a cup of liquid each day. Chiquita implemented corresponding repairs on Thursday and Friday, completing the cleanup and repairs in approximately 1 hour each day. Chiquita is continuing to monitor this area.

If you should have any questions regarding this report, please do not hesitate to contact me at (661) 257-3655.

Sincerely,
Chiquita Canyon, LLC

Matt Breuer
Environmental Manager
Chiquita Canyon

Attachments: Attachment A – Grid Map of Seep Location



LEGEND

- CV-01 ACTIVE VERTICAL WELLS ABOVE GRADE
- CV-02 ACTIVE VERTICAL WELLS WITH HOV TEMP
- CV-03 ACTIVE VERTICAL WELLS WITH HOV O2
- CV-04 ACTIVE VERTICAL WELL WITH ELEVATED H2S
- CV-05 ACTIVE VERTICAL WELLS BELOW GRADE
- C-01 ACTIVE HORIZONTAL WELLS
- C-02 ACTIVE HORIZONTAL WELLS WITH HOV TEMP
- C-03 ACTIVE HORIZONTAL WELLS WITH ELEVATED H2S
- C-04 ACTIVE HORIZONTAL WELLS WITH STINGERS
- DW-1 DETECTION WELLS
- PZ-1 PIEZOMETER
- CV-30 REMOTE VERTICAL WELL HEADS
- CV-31 REMOTE VERTICAL WELL HEADS WITH HOV O2
- CV-32 REMOTE VERTICAL WELL HEADS WITH HOV TEMP
- GP-0 GAS PROBE
- V VALVE
- VV VALVE VAULT
- AC ACTIVATED CARBON VESSEL
- LC-0 SAMPLE POINT

NOTES:

1. EXISTING TOPOGRAPHY PLAN IS FROM PROPELLER DATA. THE TOPOGRAPHY DATA IS BASED ON AUGUST 11, 2023.
2. EXISTING GCCS AS-BUILTS DATED 10-18-23.

DATE		REVISION		NO.					
<p>LANDFILL GAS COLLECTION SYSTEM WITH SEM MAP</p> <p>CHIQUITA CANYON LANDFILL 29201 HENRY MAYO DRIVE, CASTAIC, CALIFORNIA 91384</p>									
<p>SHEET TITLE:</p>					<p>PROJECT TITLE:</p>				
<p>CLIENT:</p>					<p>SCS ENGINEERS ENVIRONMENTAL CONSULTANTS 10000 WILSON BLVD., SUITE 100 FREMONT, CA 94538 PH: (510) 426-8544</p>				
<p>DATE:</p>					<p>SCALE:</p>				
<p>10-20-2013</p>					<p>1" = 100'</p>				
<p>1 of 1</p>									