
From: Medina, Steven <SMedina@scsengineers.com>
Sent: Friday, March 27, 2026 5:00 PM
To: Baitong Chen; Nathaniel Dickel; Christina Ojeda
Cc: Haley, William (Bill); Chris Fear; Han, Jessie; Viswanathan, Srividhya; Mark.Adams; Dylan Smith; Sarah Phillips
Subject: Case No. 6177-4 Stipulated Order for Abatement - Weekly Pump Installation and Operation Update
Attachments: 2026 CCLF Existing De-Watering Well with Pump Map_2026-03-27.pdf

[EXTERNAL SENDER: Use caution with links/attachments]

Hello All,

In accordance with Condition 65 of the Modified Stipulated Order, below is the summary of the installation and operation of dewatering pumps for the Chiquita Canyon Landfill. This information is subject to change based on further review and verification.

During 03/20/2026 to 03/26/2026, Chiquita completed the installation of, and began operating during the day, nine (9) pumps in a vertical LFG extraction well for a total of sixty-three (63) pumps operating in vertical LFG extraction wells. No pumps were taken offline last week. Please refer to the attached, up-to-date map of LFG wells with operating pumps. The number of pumps offline is higher than usual due in large part to reduced off-site leachate disposal capacity and the ongoing EVOH/HDPE geomembrane cover deployment. Please note that Chiquita has additional pumps in operation in perimeter sumps that are not included in this count.

During 03/27/2026 to 04/02/2026, given the number of dewatering pumps installed to date, and the maintenance associated with those pumps, Chiquita plans to install and begin operating zero (0) additional pumps in vertical LFG extraction wells in locations along the north and south slope of the reaction area. Pump installation will resume once the existing pumps are turned back on, subject to disposal outlet capacity.

Regards,

STEVEN Ruben Medina, **E.I.T.**
Staff Professional
SCS Engineers
3900 Kilroy Airport Way, Suite 300
Long Beach, CA 90806
858-204-4342 (c)
SMedina@scsengineers.com

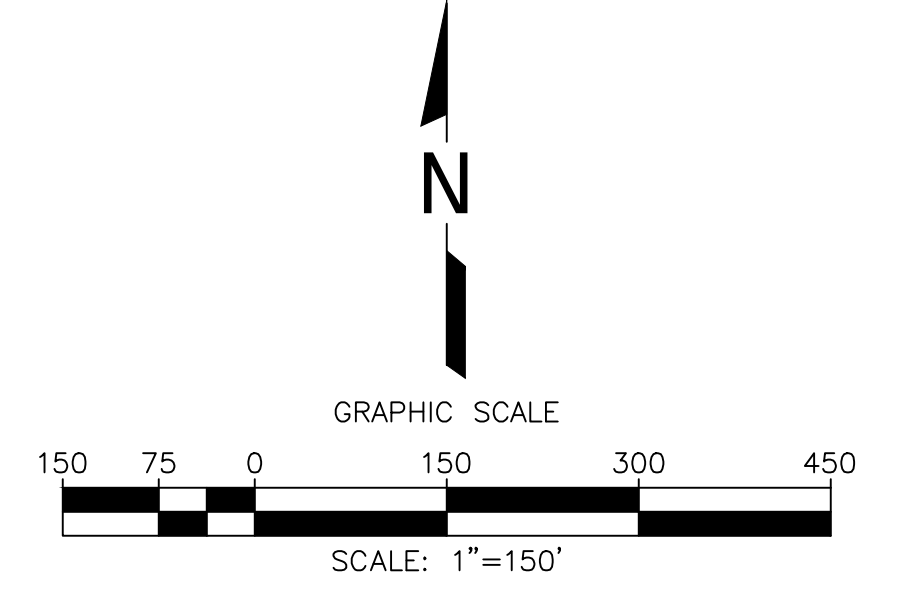
Driven by Client Success
www.scsengineers.com

*2024 Conrad Quality Focus
Award Recipient*



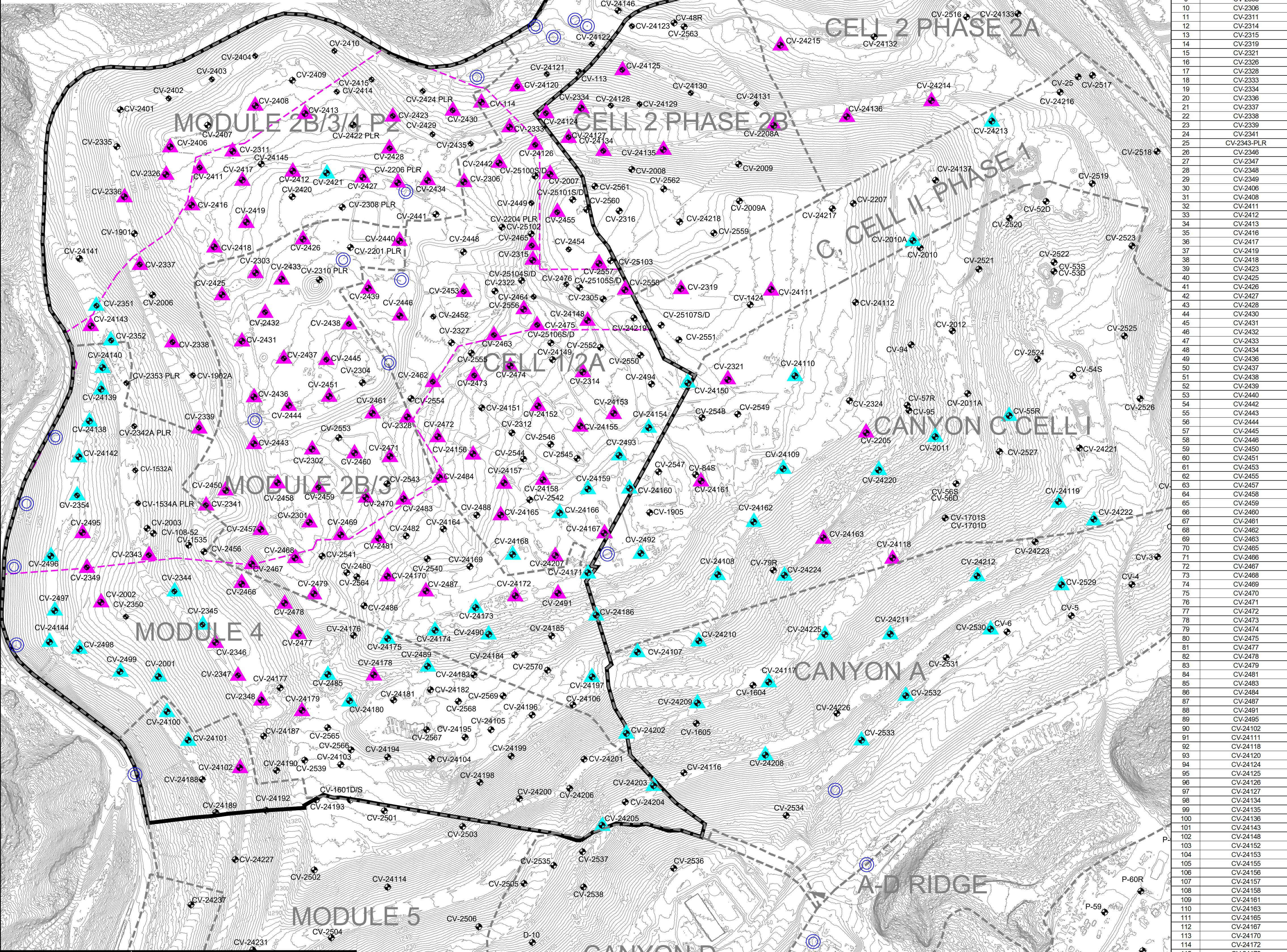
GENERAL DRAWING NOTES:
 1. EXISTING TOPOGRAPHIC SURVEY INFORMATION SHOWN WAS PROVIDED BY PROPELLOR. AERIAL PHOTOGRAPHY DATED MARCH 18, 2026.
 2. NORTH ARROW SHOWN HERE IS REFERENCE TO THE CALIFORNIA STATE PLANE ZONE V COORDINATE SYSTEM, NAD 83.
 3. THE LOCATION OF ANY EXISTING GCCS COMPONENTS AND OTHER FEATURES ARE APPROXIMATE AND SHOULD BE USED FOR INFORMATION PURPOSES ONLY.

#	Well ID
1	CV-114
2	CV-2002
3	CV-2007
4	CV-2205
5	CV-2206-PLR
6	CV-2208A
7	CV-2301
8	CV-2302
9	CV-2303
10	CV-2306
11	CV-2311
12	CV-2315
13	CV-2315
14	CV-2319
15	CV-2321
16	CV-2326
17	CV-2328
18	CV-2333
19	CV-2334
20	CV-2336
21	CV-2337
22	CV-2338
23	CV-2339
24	CV-2341
25	CV-2343-PLR
26	CV-2346
27	CV-2347
28	CV-2348
29	CV-2349
30	CV-2406
31	CV-2408
32	CV-2411
33	CV-2412
34	CV-2413
35	CV-2416
36	CV-2417
37	CV-2419
38	CV-2418
39	CV-2423
40	CV-2425
41	CV-2426
42	CV-2427
43	CV-2428
44	CV-2430
45	CV-2431
46	CV-2432
47	CV-2433
48	CV-2434
49	CV-2436
50	CV-2437
51	CV-2438
52	CV-2439
53	CV-2440
54	CV-2442
55	CV-2443
56	CV-2444
57	CV-2445
58	CV-2446
59	CV-2450
60	CV-2451
61	CV-2453
62	CV-2455
63	CV-2457
64	CV-2458
65	CV-2459
66	CV-2480
67	CV-2481
68	CV-2482
69	CV-2483
70	CV-2485
71	CV-2486
72	CV-2487
73	CV-2488
74	CV-2489
75	CV-2470
76	CV-2471
77	CV-2472
78	CV-2473
79	CV-2474
80	CV-2475
81	CV-2477
82	CV-2478
83	CV-2479
84	CV-2481
85	CV-2483
86	CV-2484
87	CV-2487
88	CV-2491
89	CV-2495
90	CV-24102
91	CV-24111
92	CV-24118
93	CV-24120
94	CV-24124
95	CV-24125
96	CV-24126
97	CV-24127
98	CV-24134
99	CV-24135
100	CV-24136
101	CV-24143
102	CV-24148
103	CV-24152
104	CV-24153
105	CV-24155
106	CV-24156
107	CV-24159
108	CV-24158
109	CV-24161
110	CV-24163
111	CV-24165
112	CV-24167
113	CV-24170
114	CV-24172
115	CV-24178
116	CV-24179
117	CV-24207
118	CV-24214
119	CV-24215
120	CV-24216
121	CV-2557
122	CV-2558



- LEGEND**
- 1150 TOPOGRAPHIC CONTOUR
 - EXISTING CELL LIMITS (APPROXIMATE)
 - REACTION AREA BOUNDARY - CONDITION 9A
 - REACTION AREA BOUNDARY - DATA ANALYSIS
 - CV-XX EXISTING VERTICAL LFG EXTRACTION WELL
 - CV-XX PLR EXISTING LFG VERTICAL EXTRACTION WELL - PRESSURIZED LEACHATE RELEASE
 - ⊙ EXISTING CONDENSATE SUMP WITH PUMP
 - ▲ EXISTING DE-WATERING WELL WITH PUMP - CURRENTLY RUNNING
 - ▲ EXISTING DE-WATERING WELL WITH PUMP - INSTALLED

#	Well ID	Operational Start/Up Date
1	CV-24142	5/3/2024
2	CV-24144	5/13/2024
3	CV-2496	5/30/2024
4	CV-2497	5/30/2024
5	CV-24109	7/3/2024
6	CV-24162	7/7/2024
7	CV-24101	7/8/2024
8	CV-24100	7/17/2024
9	CV-2498	7/18/2024
10	CV-2345	7/27/2024
11	CV-2344	7/30/2024
12	CV-24108	9/4/2024
13	CV-24210	9/10/2024
14	CV-24212	1/10/2025
15	CV-2001	1/23/2025
16	CV-24202	2/20/2025
17	CV-24209	2/28/2025
18	CV-24197	3/1/2025
19	CV-24166	4/7/2025
20	CV-24168	4/7/2025
21	CV-24171	4/7/2025
22	CV-24173	4/15/2025
23	CV-24174	4/15/2025
24	CV-24175	4/15/2025
25	CV-24159	4/16/2025
26	CV-24154	4/17/2025
27	CV-2354	5/6/2025
28	CV-2493	5/6/2025
29	CV-24160	5/6/2025
30	CV-2492	5/7/2025
31	CV-24224	5/12/2025
32	CV-24117	5/13/2025
33	CV-24119	5/14/2025
34	CV-24107	5/15/2025
35	CV-24211	5/15/2025
36	CV-24208	5/16/2025
37	CV-24205	5/20/2025
38	CV-2490	6/5/2025
39	CV-24203	6/5/2025
40	CV-24225	6/9/2025
41	CV-24186	6/10/2025
42	CV-24222	6/10/2025
43	CV-24139	6/12/2025
44	CV-24140	6/14/2025
45	CV-24220	6/16/2025
46	CV-55R	6/23/2025
47	CV-24213	7/9/2025
48	CV-24150	7/9/2025
49	CV-24110	7/17/2025
50	CV-2485	8/7/2025
51	CV-24180	8/15/2025
52	CV-2489	9/4/2025
53	CV-2530	10/3/2025
54	CV-2533	10/3/2025
55	CV-2532	10/17/2025
56	CV-2529	10/18/2025
57	CV-2010A	11/24/2025
58	CV-2011A	11/24/2025
59	CV-2351	1/23/2026
60	CV-24138	1/23/2026
61	CV-2352	1/26/2026
62	CV-2499	1/27/2026
63	CV-2421	3/16/2026



Zone Description	De-Watering Pumps			
	Total	Operational	Non-Operational	Pending Installation
Within Condition 9A Boundary	146	41	105	19
Outside of Condition 9A Boundary	39	22	17	5
Combined (Both Areas)	185	63	122	24
Condensate Sump	53	51	2	13

DATE:	
REVISION:	
NO.:	
SHEET TITLE:	EXISTING DE-WATERING WELL WITH PUMP MAP
PROJECT TITLE:	CHIQUITA CANYON LANDFILL CASTAIC, CALIFORNIA
CLIENT:	CHIQUITA CANYON LANDFILL CASTAIC, CALIFORNIA
ACAD FILE:	N:\CAD\ASBUILT-MASTERS
APP. BY:	
DRN. BY:	SRM
CHK. BY:	
DATE:	03/27/2026
SCALE:	AS SHOWN
SHEET:	1

N:\CAD\ASBUILT - MASTERS\CHIQUITA\GCCS\2026 ACAD\2026 CCLF Existing De-Watering Well with Pump Map_2026-03-27.dwg Mar 27, 2026 - 9:47am By: smedija