

March 13, 2026
File Nos. 01204123.41

Attn: Mr. Dylan Smith
Chiquita Canyon Landfill
29201 Henry Mayo Drive
Castaic, CA 91384

Subject: Completion Summary – Soil Vapor Extraction Well Installation for SW2501- SW2504, Chiquita Canyon Landfill, Castaic, California

Site Name: Chiquita Canyon Landfill
Site Address: 29201 Henry Mayo Drive, Castaic, CA 91384

Dear Mr. Dylan Smith:

This letter has been prepared by SCS Engineers (SCS) for Chiquita Canyon Landfill (CCL), and documents the activities associated with the installation of eight (8) soil vapor extraction (SVE) wells at depth intervals of shallow (S), medium (M), medium-deep (MD), and deep (D) at CCL. This information supplements the Proposed Revised Remediation Plan submitted to, and approved by, the Los Angeles County Department of Public Health, Solid Waste Management Program (LEA) dated June 2, 2025, and responds to contingency #1 in the “LEA Comments on the Proposed Revised Remediation Plan for Perimeter Monitoring Wells at GP-13 and GP-15 at Chiquita Canyon Landfill (CCL)” dated August 5, 2025:

Submit as-built drawings for the newly installed soil vapor extraction (SVE) wells, including an updated Sheet C of the Revised Plan showing a cross section with well locations and screening depths.

Enclosed in the summary are the following:

- As-Built Record Drawings depicting the locations of the installed SVE wells SW2501 – SW2504 (**Attachment A**),
- As-Built Profiles of the installed SVE wells SW2501 – SW2504 (**Attachment B**), and
- Boring logs with well construction details (**Attachment C**).

SVE WELL DRILLING AND INSTALLATION

Four (4) Soil Vapor Extraction (SVE) wells were installed as part of the Revised Remediation Plan approved by the LEA for gas probes GP-13 and GP-15. The locations, cross sections, depths, and screened intervals for the SVE wells were selected based on the approved Remediation Plan. The final well locations and system layout are presented on the as-built record drawings included in **Attachment A**.

The SVEs contained two (2) separate but adjacent boreholes with each borehole containing two (2) SVE wells casings resulting in a total of four (4) depth intervals at each SVE location: shallow (S), medium (M), medium-deep (MD), and deep (D). Each of the borings were advanced using a hollow



March 10, 2026

Page 2

stem auger to the depths shown in the boring logs in **Attachment C**. Drilling activities were conducted in a manner designed to minimize disturbance to surrounding soils and to maintain borehole integrity during well construction. Continuous observation of subsurface conditions was performed during drilling to document soil lithology by SCS personnel under the supervision of a Professional Geologist (PG). Detailed boring logs with soil characteristics, drilling observations, and construction information for each boring are provided in the boring logs included in **Attachment C**.

Each SVE well was constructed using polyvinyl chloride (PVC) casing with screened intervals positioned to target varying depths with each casing. Following placement of the well screen and casing, the annular space surrounding the screened interval was backfilled with 3/8" pea gravel to create a permeable filter pack and promote effective flow into the well.

A bentonite seal was installed between each screen interval to prevent vertical migration of vapors and allow each SVE casing depth to influence that specific depth. Surface completions were constructed with concrete vaults and vehicle rate lids to protect the SVE wells from surrounding traffic in the road area.

Upon completion of drilling and construction activities, each well was inspected to confirm proper installation and structural integrity. The final depths, cross sections, screened intervals, and construction details for each SVE well are documented in the construction logs included in **Attachment C**. Vertical profiles illustrating the installed well configurations and subsurface stratigraphy are provided in **Attachment B**.

The completed SVE wells were subsequently connected to the vacuum system on February 10, 2026. The as-built layout and configuration of the installed wells and associated piping network are shown on the record drawings included in **Attachment A**.

CLOSING

The eight (8) new SVE wells were installed in accordance with the Revised Remediation Plan approved by the LEA and related correspondence.

If you have any questions regarding information contained in this submittal, please contact Bill Haley at (303)-519-4503 or Art Jones at (209)-345-2062.

Sincerely,



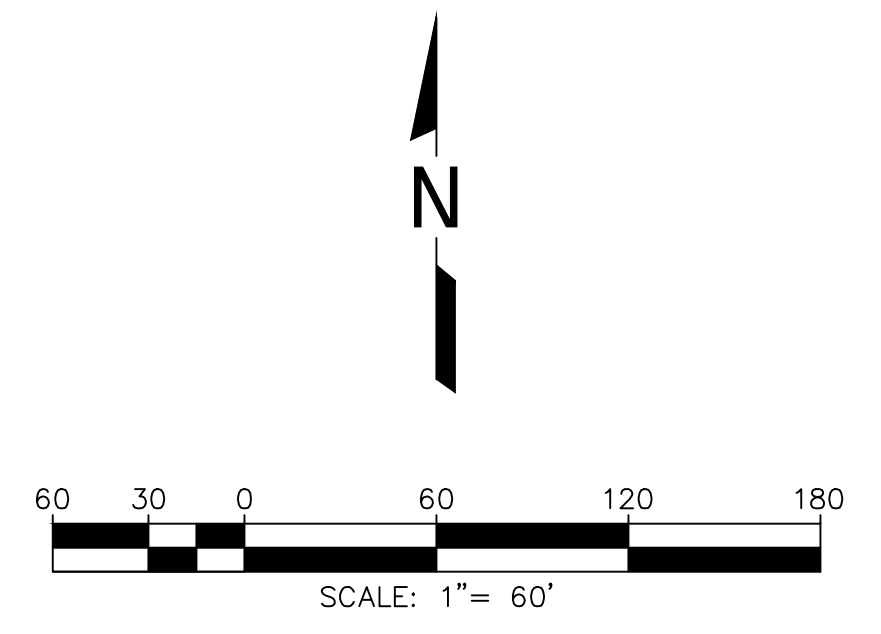
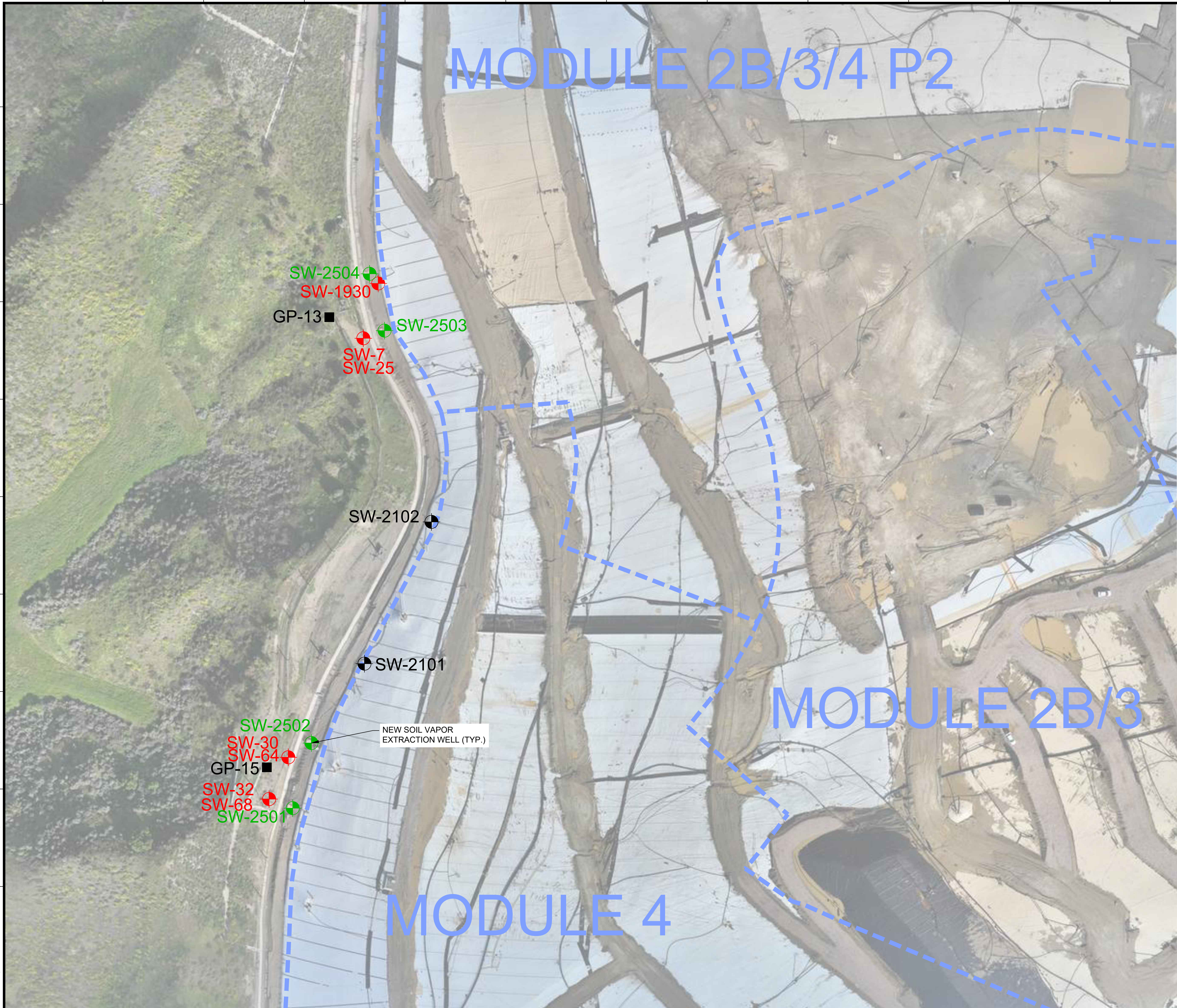
Bill Haley, P.E.
Project Director
SCS ENGINEERS



Art Jones
Vice President, Regional OM&M Manager
SCS ENGINEERS

ATTACHMENT A
As-Built Record Drawings

MODULE 2B/3/4 P2



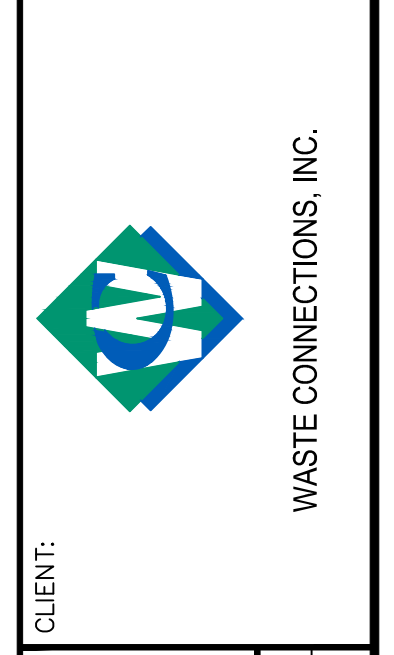
LEGEND

- CELL LIMITS (APPROXIMATE)
- GP-1 EXISTING PERIMETER MIGRATION PROBE
- SW-XX EXISTING SOIL VAPOR EXTRACTION WELL
- SW-XX 2025 AS-BUILT SOIL VAPOR EXTRACTION WELL - ABANDONMENT
- SW-XX 2025 AS-BUILT SOIL VAPOR EXTRACTION WELL

NO.	REVISION	DATE

SHEET TITLE:
2025 AS-BUILT SVE SITE PLAN - ENLARGED

PROJECT TITLE:
RECORD DRAWINGS
2025 SOIL VAPOR EXTRACTION WELL DESIGN
CHICOITA CANYON LANDFILL
CASTAIC, CALIFORNIA



SCS ENGINEERS ENVIRONMENTAL CONSULTANTS 3000 KILROY AIRPORT WAY, SUITE 300 LONG BEACH, CA 90806 PH: (562) 426-5544 FAX: (562) 427-0905	DWG. BY: SRM CHK. BY: WCH
	ACAD FILE: F:\ENGINEERS APP. BY: WCH
DATE: 03/03/2026	SCALE: AS SHOWN
SHEET: A3	PROJECT NO: 01204123.41 DSN. BY:

- GENERAL DRAWING NOTES:**
- EXISTING TOPOGRAPHIC SURVEY INFORMATION SHOWN WAS PROVIDED BY PROPELLER. AERIAL PHOTOGRAPHY DATED FEBRUARY 18, 2026.
 - NORTH ARROW SHOWN HERE IS REFERENCE TO THE CALIFORNIA STATE PLANE ZONE V COORDINATE SYSTEM, NAD 83.

RECORD DRAWINGS

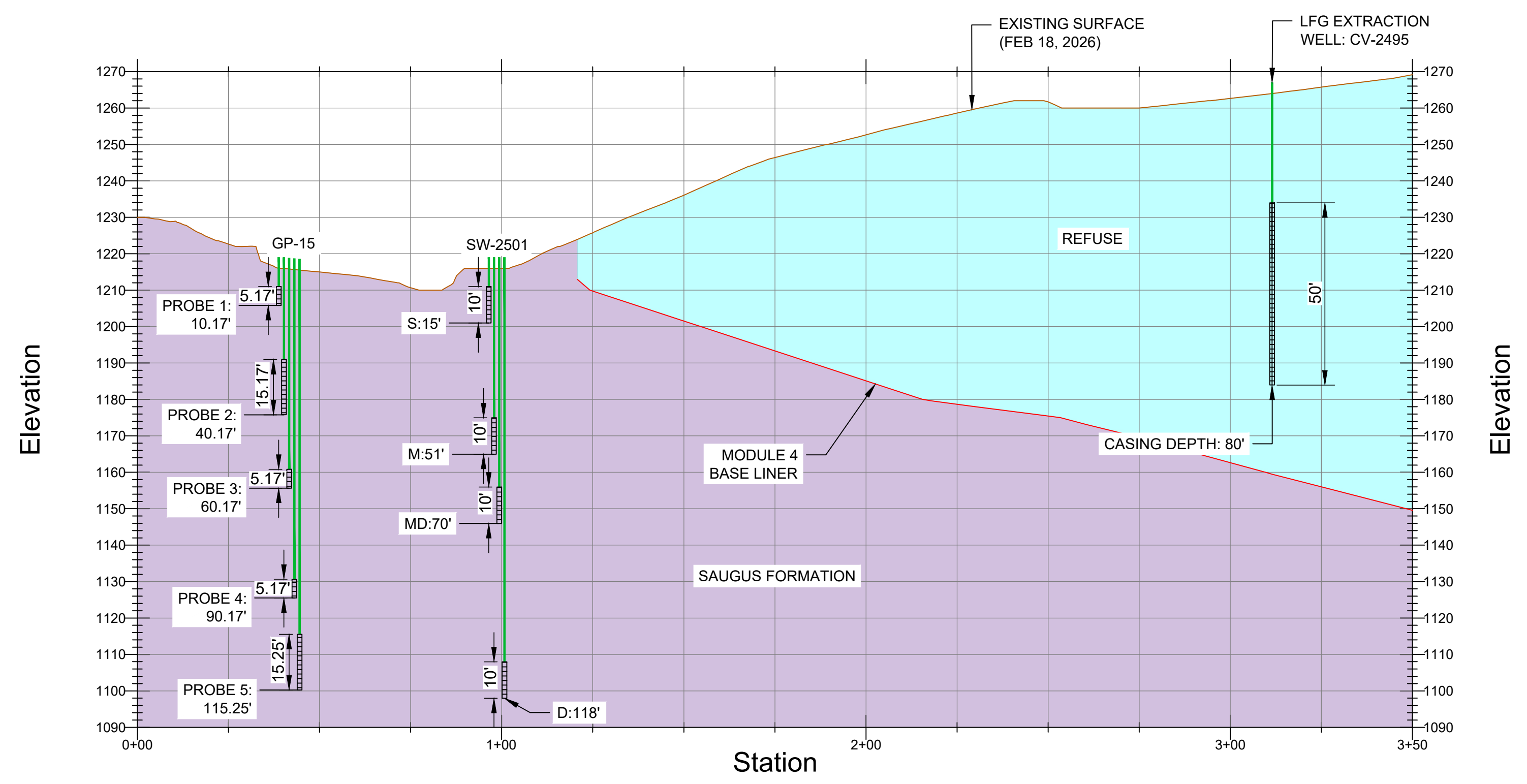
Z:\Files\Engineers\Waste Connections\Chiquita Canyon LF\2025 SVE Design\07-Record Drawings\DWG\2025 OCLF SVE Design_Record Drawing_Appendix A_v0.1_2026-03-03.dwg Mar 03, 2026 - 9:30am By: smedina

ATTACHMENT B
As-Built Profiles

Z:\Files\Engineers\Waste Connections\Chiquita Canyon LF\2425 SVE Design\07-Record Drawings\DWG\2025 CCLF SVE As-Built Profiles_Appendix B_v0.1_2026-03-43.dwg Mar 03, 2026 - 8:16am By: smedna

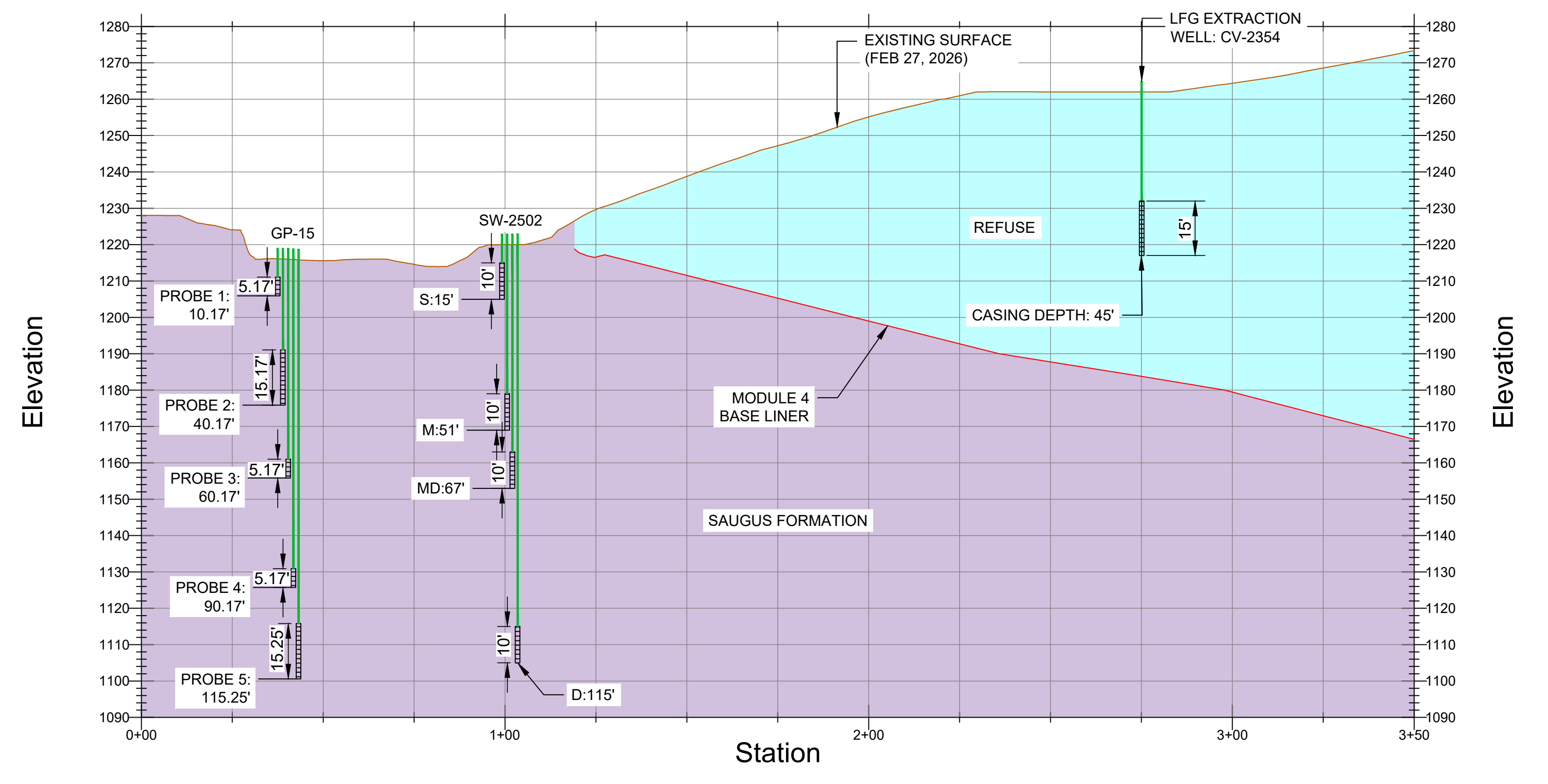
LEGEND

	TOPOGRAPHIC SURFACE
	BASE LINER SURFACE
	PERFORATED PIPING



GP-15 w/ SW-2501 PROFILE - STA. 0+00 TO 3+50
 HORIZONTAL SCALE: 1"=50' / VERTICAL SCALE: 1"=50'

1
B1



GP-15 w/ SW-2502 PROFILE - STA. 0+00 TO 3+50
 HORIZONTAL SCALE: 1"=50' / VERTICAL SCALE: 1"=50'

2
B1

NO.	REVISION	DATE

SHEET TITLE: 2025 AS-BUILT SOIL VAPOR EXTRACTION WELLS PROFILE - SHEET 1
 PROJECT TITLE: 2025 SOIL VAPOR EXTRACTION WELL DESIGN CHIQUITA CANYON LANDFILL CASTAIC, CALIFORNIA

CLIENT: CHIQUITA CANYON LANDFILL CASTAIC, CALIFORNIA

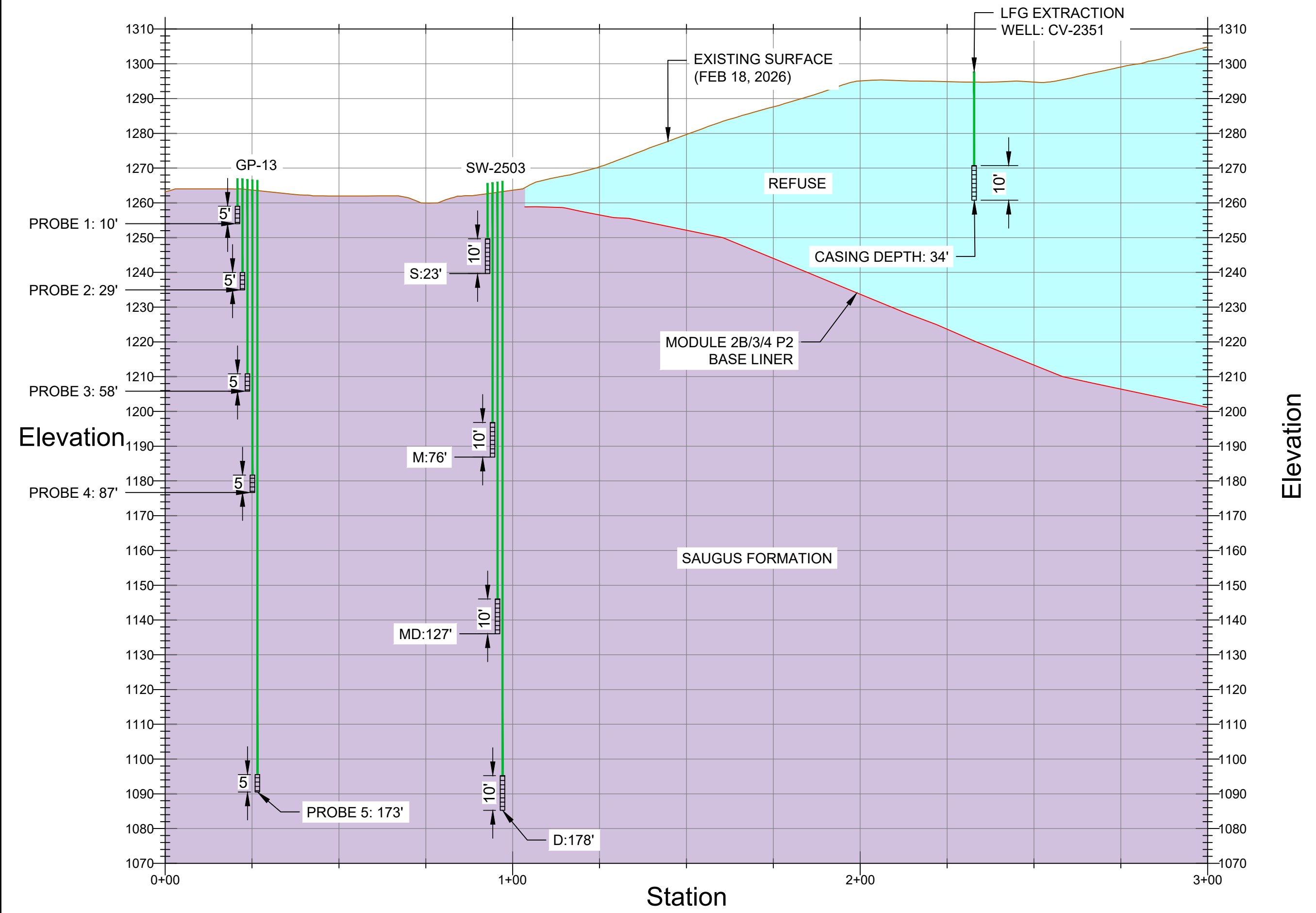
SCS ENGINEERS ENVIRONMENTAL CONSULTANTS
 300 N. GARDEN, 4TH FLOOR, SUITE 300
 LONG BEACH, CA 90806
 PH: (562) 426-8544
 PROJ. NO: 01204123.41
 DSN. BY: SRM
 APP. BY: SRM

DATE: 03/03/2026
 SCALE: AS SHOWN
 SHEET: B1

A
B
C
D
E
F
G
H
I
J
K
L
M
N
O
P
Q
R
S
T
U
V
W
X
Y
Z

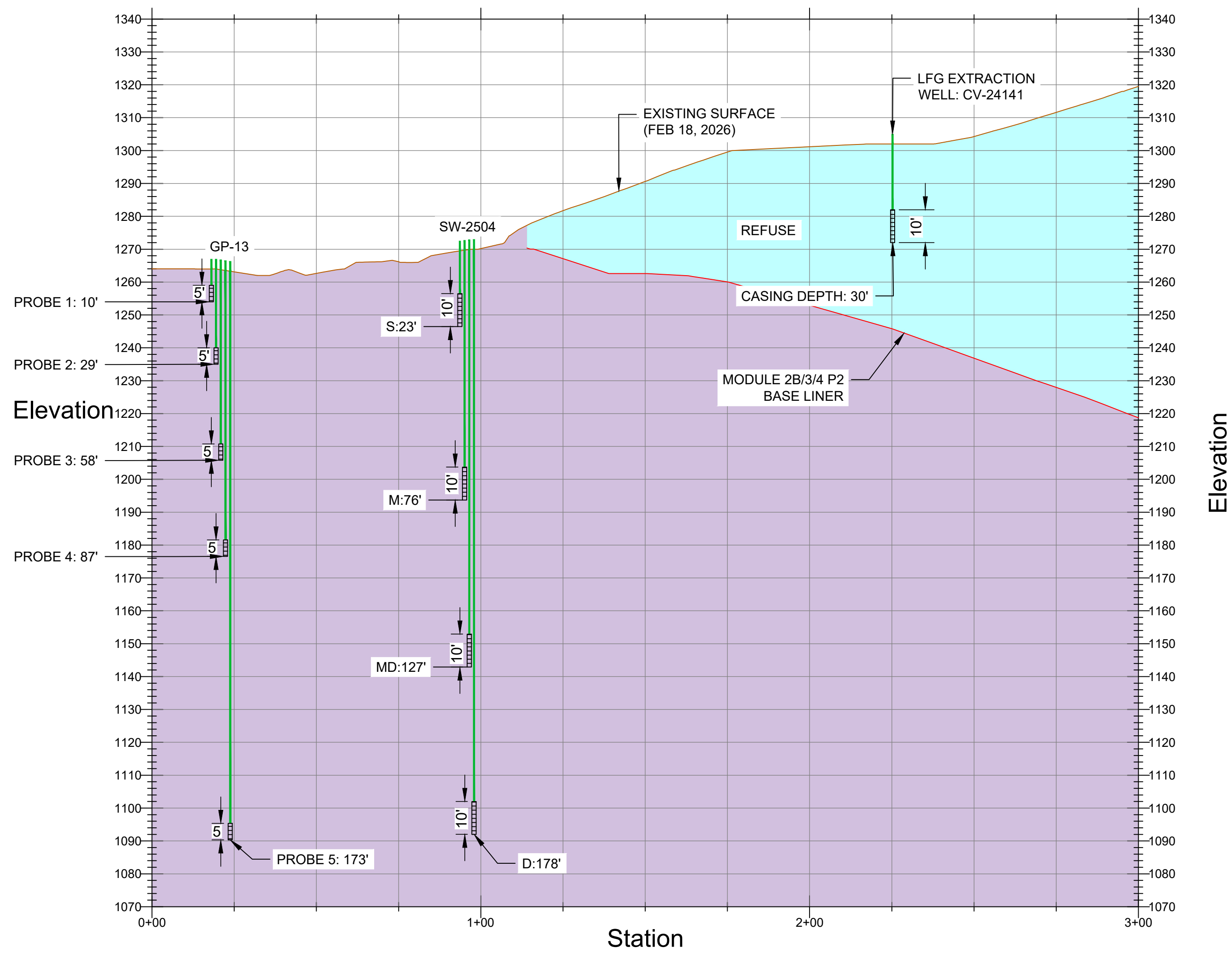
LEGEND

	TOPOGRAPHIC SURFACE
	BASE LINER SURFACE
	PERFORATED PIPING



GP-13 w/ SW-2503 PROFILE - STA. 0+00 TO 3+00
 HORIZONTAL SCALE: 1"=50' / VERTICAL SCALE: 1"=50'

1
B2

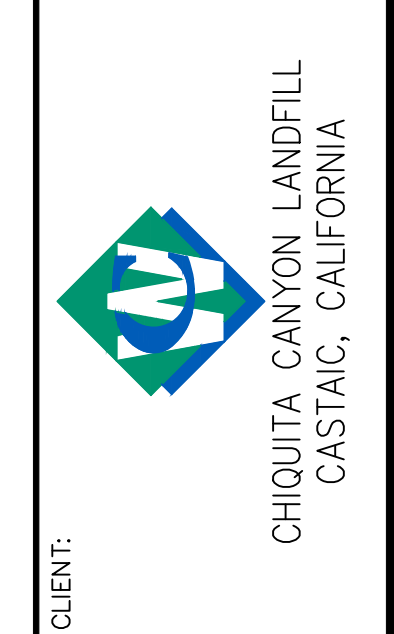


GP-15 w/ SW-2504 PROFILE - STA. 0+00 TO 3+00
 HORIZONTAL SCALE: 1"=50' / VERTICAL SCALE: 1"=50'

2
B2

NO.	REVISION	DATE

SHEET TITLE: 2025 AS-BUILT SOIL VAPOR EXTRACTION WELLS PROFILE - SHEET 2
 PROJECT TITLE: 2025 SOIL VAPOR EXTRACTION WELL DESIGN CHIQUITA CANYON LANDFILL CASTAIC, CALIFORNIA



CLIENT: CHIQUITA CANYON LANDFILL CASTAIC, CALIFORNIA
 ACAD FILE: N:\CAD\ASBUILT\MASTERS
 APP. BY: SRM
 CHK. BY: SRM
 PROJ. NO: 01204123.41
 DSN. BY: SRM

DATE: 03/03/2026
 SCALE: AS SHOWN
 SHEET: B2

Z:\Files\Engineers\Waste Connections\Chiquita Canyon LF\2425 SVE Design\07-Record Drawings\DWG\2025 CCLF SVE As-Built Profiles_Appendix B_v0.1_2026-03-03.dwg Mar 03, 2026 - 8:37am By: smedma

ATTACHMENT C
Boring Logs with Well Construction Details

3900 Kilroy Airport Way, Suite 300
 Long Beach, California 90806-6816

BORING NUMBER: SW2501-S/M Page 1 of 2

Chiquita Canyon Landfill
29201 Henry Mayo Drive
Castaic, California

JOB NUMBER: 01204123.41

REMARKS:

Depth		Sample Information					Graphic Log	Description	Completion Detail
meters	feet	Sample Location	Sample Number	Blow Counts	OVM (ppm)	USCS Soil Class.			
0	0					ML	Light Brown to Brown, Clayey Silt with Some Fine Sand, Moist, Low to Medium Plasticity, Soft, Some Reddish Brown Mottling, No Staining/Odor		
1	5						At 3 feet bgs: color change to Dark Gray		
2	10					SM	Dark Gray, Silty Fine Sand with Trace Gravel, Poorly Graded, Moist, Medium Dense, Fine to Medium Gravel, Micaceous, No Staining/Odor		
3	15						At 7 feet bgs: color change to Dark Gray		
4	20						At 18 feet bgs: color change to Dark Brown/ Brown		
5	25					ML	Dark Gray, Sandy Silt with Trace Fine Gravel, Moist, Low Plasticity, Medium Stiff, Fine Sand, No Staining/Odor		
6	30					SM	Dark Gray, Silty Fine Sand with Fine Gravel, Poorly Graded, Moist, Medium Dense, No Staining/Odor		

STANDARD_LOG 01204123.41 SVE BORING LOGS.GPJ STD_LOG.GDT 2/26/26

Drilling Company: **Boart Longyear**
 Drilling Method: **Sonic Drilling**
 Logged By: **E. Ortenberg**

Date Started: **12/8/25**
 Date Ended: **12/8/25** Elevation: **1216.0 ft**
 Boring Diameter: **8"** Total Depth: **53.0 ft**
 Well Diameter: **2"**

3900 Kilroy Airport Way, Suite 300
 Long Beach, California 90806-6816

BORING NUMBER: SW2501-S/M Page 2 of 2

Chiquita Canyon Landfill

JOB NUMBER: 01204123.41

Depth		Sample Information					Graphic Log	Description	Completion Detail
meters	feet	Sample Location	Sample Number	Blow Counts	OVM (ppm)	USCS Soil Class.			
30	30								
10	35					SP	Dark Gray, Fine Sand with Some Silt and Fine Gravel, Poorly Graded, Moist, Loose, Micaceous, No Staining/Odor	<p>Schedule 40 PVC Casing</p> <p>Hydrated Bentonite</p> <p>SW2501-M</p> <p>Schedule 40 PVC Slotted Screen</p> <p>3/8" Pea Gravel</p> <p>End Cap</p>	
11	40					ML	Light Brown, Silt with Some Fine Sand, Moist, Low Plasticity, Stiff, No Staining/Odor		
12	45						Becomes Light Brown, Silt with Fine Sand, Moist, Low Plasticity, Stiff, No Staining/Odor		
13	50								
14	55								
15	60								
16	65								
17									
18									
19									
20									

STANDARD_LOG 01204123.41 SVE BORING LOGS.GPJ STD_LOG.GDT 2/26/26

3900 Kilroy Airport Way, Suite 300
Long Beach, California 90806-6816

BORING NUMBER: SW2501-MD/D

Page 1 of 4

Chiquita Canyon Landfill
29201 Henry Mayo Drive
Castaic, California

JOB NUMBER: 01204123.41

REMARKS:

Depth		Sample Information					Graphic Log	Description	Completion Detail
meters	feet	Sample Location	Sample Number	Blow Counts	OVM (ppm)	USCS Soil Class.			
0	0					ML	Dark Gray, Fine Sandy Silt, Moist, Low Plasticity, Soft, No Staining/Odor		
3	10					SM	Dark Gray, Silty Fine Sand, Poorly Graded, Moist, Loose, Trace Fine Gravel, No Staining/Odor		
4	15					ML	Dark Grayish Brown, Sandy Silt to Silt with Sand, Moist, Low Plasticity, Soft, No Staining/Odor		
6	20					SM ML	Lens of Grayish Brown Silty Sand Dark Grayish Brown, Sandy Silt to Silt with Sand, Moist, Low Plasticity, Soft, No Staining/Odor		
7	25					SP	Brown, Fine Sand with Silt, Poorly Graded, Moist, Loose, No Staining/Odor		

STANDARD_LOG_01204123.41_SVE BORING LOGS.GPJ STD_LOG.GDT 2/26/26

Drilling Company: **Boart Longyear**
Drilling Method: **Sonic Drilling**
Logged By: **E. Ortenberg**

Date Started: **12/9/25**
Date Ended: **12/10/25** Elevation: **1216.0 ft**
Boring Diameter: **8"7"** Total Depth: **120.0 ft**
Well Diameter: **2"**

3900 Kilroy Airport Way, Suite 300
 Long Beach, California 90806-6816

BORING NUMBER: SW2501-MD/D

Page 2 of 4

Chiquita Canyon Landfill

JOB NUMBER: 01204123.41

STANDARD_LOG_01204123.41_SVE_BORING_LOGS.GPJ STD_LOG.GDT 2/26/26

Depth		Sample Information					Graphic Log	Description	Completion Detail
meters	feet	Sample Location	Sample Number	Blow Counts	OVM (ppm)	USCS Soil Class.			
30									
10									
35									
11						ML	Grayish Brown; Silt with Fine Sand and Trace Fine Gravel; Moist, Low to No Plasticity, Medium Stiff to Stiff, No Staining/Odor		
12						SM	Gray, Silty Fine Sand, Moist, Medium Dense, No Staining/Odor		
40						ML	Gray, Silt with Fine Sand to Sandy Silt, Moist, Low Plasticity, Stiff, Trace Fine Gravel, No Staining/Odor	Schedule 40 PVC Casing	
13									
45								SW2501-D	
14								3/8" Pea Gravel	
15									
50									
16						SP	Light Gray, Fine to Medium Sand with Silt and Some Fine to Medium Gravel, Poorly Graded, Moist, Loose, No Staining/Odor		
55								SW2501-MD	
17									
18									
60									
19							No Recovery from 62.5 to 65 feet bgs	Schedule 40 PVC Slotted Screen	
20	65					CL	Dark Gray, Clay with Fine Sand, Moist, Medium Plasticity, Soft, No Staining/Odor		

3900 Kilroy Airport Way, Suite 300
Long Beach, California 90806-6816

BORING NUMBER: SW2501-MD/D

Page 3 of 4

Chiquita Canyon Landfill

JOB NUMBER: 01204123.41

Depth		Sample Information					Graphic Log	Description	Completion Detail
meters	feet	Sample Location	Sample Number	Blow Counts	OVM (ppm)	USCS Soil Class.			
21	70					SM	Light Gray, Silty Fine Sand, Poorly Graded, Moist, Loose, Micaceous, No Staining/Odor At 70 feet bgs telescope to 7" borehole diameter	<p>Schedule 40 PVC Slotted Screen</p> <p>End Cap</p>	
22	75					ML	Dark Gray, Fine Sandy Silt, Moist, Low to No Plasticity, Soft to Medium Stiff, Micaceous, No Staining/Odor	<p>3/8" Pea Gravel</p>	
23	80					SP	Light Gray, Fine to Medium Sand with Some Silt and Gravel, Poorly Graded, Moist, Loose, Fine to Medium Gravel, No Staining/Odor	<p>Schedule 40 PVC Casing</p>	
24	85						At 84 feet bgs: Concretions	<p>SW2501-D</p>	
25	90					SP	Light Gray, Fine to Medium Sand with Gravel and Some Silt, Poorly Graded, Moist, Loose, Fine to Medium Gravel, No Staining/Odor	<p>Hydrated Bentonite</p>	
26	95					SP	Gray, Fine to Medium Sand with Gravel and Trace Silt, Poorly Graded, Moist, Loose, Fine to Coarse Gravel, No Staining/Odor		
27	100								
28									
29									
30									
31									

STANDARD_LOG_01204123.41_SVE_BORING_LOGS.GPJ_STD_LOG_GDT_2/26/26

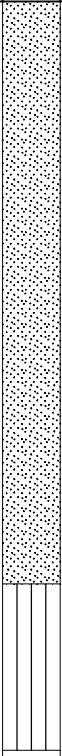
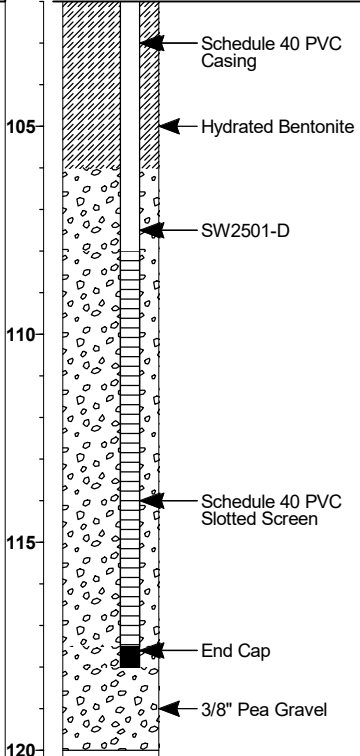
3900 Kilroy Airport Way, Suite 300
 Long Beach, California 90806-6816

BORING NUMBER: SW2501-MD/D

Page 4 of 4

Chiquita Canyon Landfill

JOB NUMBER: 01204123.41

Depth		Sample Information					Graphic Log	Description	Completion Detail
meters	feet	Sample Location	Sample Number	Blow Counts	OVM (ppm)	USCS Soil Class.			
32	105								
33	110								
34	115					ML	Olive Gray to Gray, Silt with Fine Sand and Clay, Moist, Low Plasticity, Medium Stiff, No Staining/Odor.		
35	120								
36	125								
37	130								
38	135								
39									
40									
41									
42									

STANDARD_LOG_01204123.41_SVE BORING LOGS.GPJ STD_LOG.GDT 2/26/26

3900 Kilroy Airport Way, Suite 300
 Long Beach, California 90806-6816

BORING NUMBER: SW2502-S/M Page 1 of 2

Chiquita Canyon Landfill
29201 Henry Mayo Drive
Castaic, California

JOB NUMBER: 01204123.41

REMARKS:

Depth		Sample Information					Graphic Log	Description	Completion Detail
meters	feet	Sample Location	Sample Number	Blow Counts	OVM (ppm)	USCS Soil Class.			
0	0					SP	Brown, Fine to Medium Sand with Gravel, Poorly Graded, Moist, Loose	Flush-mount, Traffic-rated Well Box	
1	5					ML	Dark Gray, Silt with Fine Sand and Some Gravel, Moist, Low Plasticity, Soft to Medium Stiff, No Staining/Odor	SW2502-S	
2	10							SW2502-M	
3	15						Some Reddish Brown Mottling/Oxidation	Schedule 40 PVC Slotted Screen	
4	20					SP	Gray, Fine Sand with Silt and Gravel, Poorly Graded, Moist, No Staining/Odor	End Cap	
5	25						Color change to Dark Brown/Brown	Schedule 40 PVC Casing	
6	30					ML	Dark Grayish Brown to Dark Gray, Fine Sandy Silt with Fine Gravel, Moist, Low Plasticity, Medium Stiff, No Staining/Odor	3/8" Pea Gravel	
7								Hydrated Bentonite	

STANDARD_LOG 01204123.41 SVE BORING LOGS.GPJ STD_LOG.GDT 2/26/26

Drilling Company: **Boart Longyear**
 Drilling Method: **Sonic Drilling**
 Logged By: **E. Ortenberg**

Date Started: **12/8/25**
 Date Ended: **12/8/25** Elevation: **1220.0 ft**
 Boring Diameter: **8"** Total Depth: **53.0 ft**
 Well Diameter: **2"**

3900 Kilroy Airport Way, Suite 300
 Long Beach, California 90806-6816

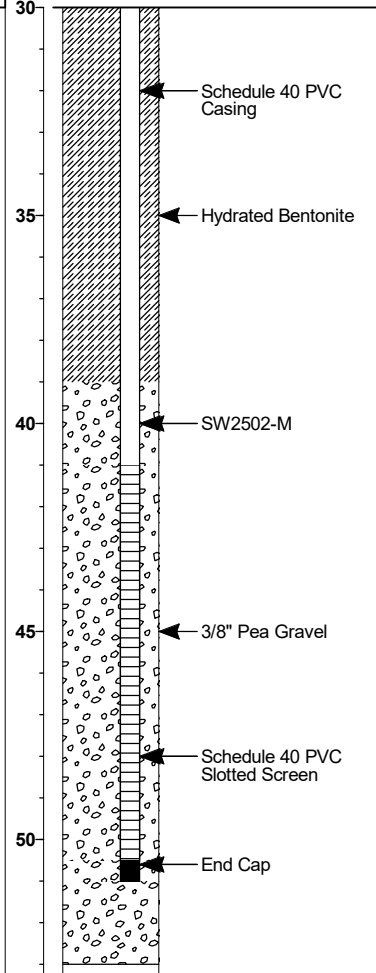
BORING NUMBER: SW2502-S/M Page 2 of 2

Chiquita Canyon Landfill

JOB NUMBER: 01204123.41

Depth		Sample Information					Graphic Log	Description	Completion Detail
meters	feet	Sample Location	Sample Number	Blow Counts	OVM (ppm)	USCS Soil Class.			
30						SM	Brown, Silty Fine to Medium Sand with Some Fine to Coarse Gravel, Poorly Graded, Moist, Loose, No Staining/Odor	30	
10									
35							Color change to Gray/Light Gray	35	
11						SP	Light Gray, Fine Sand with Silt and Fine to Medium Gravel, Poorly Graded, Moist, Loose, No Staining/Odor		
12								40	
13									
45						ML	Gray, Fine Sandy Silt with Fine Gravel, Moist, Non Plastic, Soft, No Staining/Odor	45	
14									
45						SP	Light Gray, Fine Sand with Silt and Fine to Medium Gravel, Poorly Graded, Moist, Loose, No Staining/Odor	45	
15								50	
50									
16								50	
16									
55								55	
17									
55								55	
17									
18								60	
60									
18								60	
18									
19								65	
65									
19								65	
65									
20								65	
20									

STANDARD_LOG_01204123.41_SVE_BORING_LOGS.GPJ_STD_LOG.GDT_2/26/26



3900 Kilroy Airport Way, Suite 300
 Long Beach, California 90806-6816

BORING NUMBER: SW2502-MD/D

Page 1 of 4

Chiquita Canyon Landfill
29201 Henry Mayo Drive
Castaic, California

JOB NUMBER: 01204123.41

REMARKS:

Depth		Sample Information					Graphic Log	Description	Completion Detail
meters	feet	Sample Location	Sample Number	Blow Counts	OVM (ppm)	USCS Soil Class.			
0	0					SM	Yellowish Brown, Silty Fine Sand, Moist, Loose, Trace Fine Gravel, No Staining/Odor	<p>Flush-mount, Traffic-rated Well Box</p> <p>3/8" Pea Gravel</p> <p>SW2502-D</p> <p>SW2502-MD</p> <p>Schedule 40 PVC Casing</p>	
1						ML	Dark Brown, Fine Sandy Silt, Moist, Medium Plasticity, Medium Stiff to Stiff, Trace Gravel, No Staining/Odor		
2	5						Dark Brown, Silt with Fine Sand, Moist, Medium Plasticity, Medium Stiff to Stiff, Trace Gravel, No Staining/Odor At 6 feet bgs: Increase Gravel Content to Approximately 10%		
3	10								
4									
5	15					SM	Dark Gray to Dark Brown, Silty Fine Sand, Poorly Graded, Moist, Medium Dense, No Staining/Odor		
6	20								
7									
8	25					ML	Dark Brown, Sandy Silt, Moist, Low to No Plasticity, Medium Stiff, No Staining/Odor		
9									
	30								

STANDARD_LOG_01204123.41_SVE BORING LOGS.GPJ STD_LOG.GDT 2/26/26

Drilling Company: **Boart Longyear**
 Drilling Method: **Sonic Drilling**
 Logged By: **E. Ortenberg**

Date Started: **12/3/25**
 Date Ended: **12/5/25**
 Boring Diameter: **8"7"**
 Well Diameter: **2"**
 Elevation: **1220.0 ft**
 Total Depth: **117.0 ft**

3900 Kilroy Airport Way, Suite 300
Long Beach, California 90806-6816

BORING NUMBER: SW2502-MD/D

Page 2 of 4

Chiquita Canyon Landfill

JOB NUMBER: 01204123.41

STANDARD_LOG_01204123.41_SVE_BORING_LOGS.GPJ_STD_LOG_GDT_2/26/26

Depth		Sample Information					Graphic Log	Description	Completion Detail
meters	feet	Sample Location	Sample Number	Blow Counts	OVM (ppm)	USCS Soil Class.			
30									
10									
35						SP	Dark Gray, Fine Sand with Some Silt and Fine Gravel, Poorly Graded, Moist, Loose, No Staining/Odor		
11							Increase Grain Size to Fine to Medium Sand and Fine to Medium Gravel		
12							Gray, Fine to Medium Sand with Fine to Medium Gravel and Trace Silt, Poorly Graded, Moist, Loose, No Staining/Odor		
40									
13									
45									
14									
15						ML	Dark Olive Gray to Dark Gray, Fine Sandy Silt, Moist, Low to No Plasticity, Medium Stiff to Stiff, No Staining/Odor		
50									
16									
55						SP	Gray, Fine to Medium Sand with Fine to Medium Gravel and Trace Silt, Poorly Graded, Moist, Loose, No Staining/Odor		
17									
18						ML	Light Gray, Silt with Fine Sand, Moist, Low Plasticity, Stiff, Poorly Graded Sand, No Staining/Odor		
60									
19						CL	Dark Brown to Dark Grayish Brown, Clay with Silt and Trace Fine Sand, Moist, Low to No Plasticity, Stiff, Yellowish Brown Mottling, No Staining/Odor		
65									
20									

← 3/8" Pea Gravel

← Schedule 40 PVC Casing

← SW2502-D

← SW2502-MD

← Schedule 40 PVC Slotted Screen

3900 Kilroy Airport Way, Suite 300
 Long Beach, California 90806-6816

BORING NUMBER: SW2502-MD/D

Page 3 of 4

Chiquita Canyon Landfill

JOB NUMBER: 01204123.41

Depth		Sample Information					Graphic Log	Description	Completion Detail
meters	feet	Sample Location	Sample Number	Blow Counts	OVM (ppm)	USCS Soil Class.			
								End Cap	
21	70					SP	Light Gray, Fine Sand with Some Silt, Poorly Graded, Moist, Medium Dense, Micaceous, No Staining/Odor At 70 feet bgs telescope to 7" borehole diameter		
22						CL	Gray to Light Gray, Clay, Moist, Low Plasticity, Medium Stiff to Stiff, Yellowish Brown Mottling, No Staining/Odor At 74 feet bgs: One Foot Lens of Sandy Clay, Moist, Low Plasticity, Medium Stiff, Yellowish Brown Mottling		
23	75							3/8" Pea Gravel	
24	80					SP	Light Brown, Fine Sand with Clay, Poorly Graded, Moist, Medium Dense, White Concretions, No Staining/Odor	Schedule 40 PVC Casing	
25									
26	85					SP	Light Brown, Fine Sand with Clay and Some Fine to Medium Gravel, Poorly Graded, Moist, Medium Dense, No Staining/Odor	SW2502-D	
27						SP	Light Brown, Fine Sand with Silt, Poorly Graded, Moist, Medium Dense, No Staining/Odor		
28	90						Color change to Gray/Light Gray		
29	95							Hydrated Bentonite	
30									
31	100						Color change to Light Brownish Gray		

STANDARD_LOG_01204123.41_SVE BORING LOGS.GPJ STD_LOG.GDT 2/26/26

3900 Kilroy Airport Way, Suite 300
Long Beach, California 90806-6816

BORING NUMBER: SW2502-MD/D

Page 4 of 4

Chiquita Canyon Landfill

JOB NUMBER: 01204123.41

Depth		Sample Information					Graphic Log	Description	Completion Detail
meters	feet	Sample Location	Sample Number	Blow Counts	OVM (ppm)	USCS Soil Class.			
						SP	Light Gray, Fine to Coarse Sand with Silt, Poorly Graded, Moist, Loose, Trace Fine to Medium Gravel		
32	105								
33	110					CL	Light Gray, Clay with Trace Fine Sand, Moist, Low Plasticity, Stiff, Micaceous, No Staining/Odor		
34	115								
35									
36									
37									
38									
39									
40									
41									
42									

STANDARD_LOG_01204123.41_SVE_BORING_LOGS.GPJ STD_LOG.GDT 2/26/26

3900 Kilroy Airport Way, Suite 300
 Long Beach, California 90806-6816

BORING NUMBER: SW2503-S/M Page 1 of 3

Chiquita Canyon Landfill
29201 Henry Mayo Drive
Castaic, California

JOB NUMBER: 01204123.41

REMARKS:

Depth		Sample Information					Graphic Log	Description	Completion Detail
meters	feet	Sample Location	Sample Number	Blow Counts	OVM (ppm)	USCS Soil Class.			
0	0					SP	Light Brown, Coarse Sand with Some Gravel, Poorly Graded, Moist		
1	5					SP	Light Brown, Coarse Sand with Trace Gravel, Poorly Graded, Moist		
3	10					SP	Brown, Coarse Sand with Trace Gravel, Poorly Graded, Moist		
4	15								
5	20								
6	25					SP	Light Grayish Brown, Sand with Some Silt and Gravel, Poorly Graded, Moist		
7	30								

STANDARD_LOG_01204123.41_SVE BORING LOGS.GPJ STD_LOG.GDT 2/26/26

Drilling Company: **Boart Longyear**
 Drilling Method: **Sonic Drilling**
 Logged By: **T. Gordon**

Date Started: **10/23/25**
 Date Ended: **10/23/25** Elevation: **1262.0 ft**
 Boring Diameter: **8"** Total Depth: **78.0 ft**
 Well Diameter: **2"**

3900 Kilroy Airport Way, Suite 300
 Long Beach, California 90806-6816

BORING NUMBER: SW2503-S/M Page 2 of 3

Chiquita Canyon Landfill

JOB NUMBER: 01204123.41

STANDARD_LOG_01204123.41_SVE_BORING_LOGS.GPJ STD_LOG.GDT 2/26/26

Depth		Sample Information					Graphic Log	Description	Completion Detail
meters	feet	Sample Location	Sample Number	Blow Counts	OVM (ppm)	USCS Soil Class.			
30						SP	Light Grayish Brown, Coarse Sand with Some Silt and Gravel, Poorly Graded, Moist	<p>Schedule 40 PVC Casing</p> <p>3/8" Pea Gravel</p> <p>SW2503-M</p> <p>Hydrated Bentonite</p>	
10									
35							Reddish Brown, Coarse Sand with Silt and Some Gravel, Poorly Graded, Moist		
11									
12							Light Grayish Brown, Coarse Sand with Some Silt and Gravel, Poorly Graded, Moist		
13									
45									
14									
50									
15									
16									
17									
55									
18									
60									
19									
65									
20						SP			

3900 Kilroy Airport Way, Suite 300
 Long Beach, California 90806-6816

BORING NUMBER: SW2503-S/M Page 3 of 3

Chiquita Canyon Landfill

JOB NUMBER: 01204123.41

Depth		Sample Information					Graphic Log	Description	Completion Detail
meters	feet	Sample Location	Sample Number	Blow Counts	OVM (ppm)	USCS Soil Class.			
21	70						Light Grayish Brown, Coarse Sand with Some Silt and Gravel, Poorly Graded, Moist	<p>3/8" Pea Gravel</p> <p>Schedule 40 PVC Slotted Screen</p> <p>SW2503-M</p> <p>End Cap</p>	
22	75					SP			
23	75								
24	80								
25									
26	85								
27	90								
28									
29	95								
30	100								
31									

STANDARD_LOG_01204123.41_SVE_BORING_LOGS.GPJ_STD_LOG_GDT_2/26/26

3900 Kilroy Airport Way, Suite 300
 Long Beach, California 90806-6816

BORING NUMBER: SW2503-MD/D

Page 1 of 6

Chiquita Canyon Landfill
29201 Henry Mayo Drive
Castaic, California

JOB NUMBER: 01204123.41

REMARKS:

Depth		Sample Information					Graphic Log	Description	Completion Detail		
meters	feet	Sample Location	Sample Number	Blow Counts	OVM (ppm)	USCS Soil Class.					
0	0					SP		Light Brown, Coarse Sand, Poorly Graded, Moist		Flush-mount, Traffic-rated Well Box	
1	5									Light Brown, Coarse Sand, Poorly Graded, Moist	3/8" Pea Gravel
3	10					SP				Brown, Coarse Sand, Poorly Graded, Moist	SW2503-D
4	15								SW2503-MD		
6	20									Schedule 40 PVC Casing	
7	25										
8											
9	30										

STANDARD_LOG_01204123.41_SVE BORING LOGS.GPJ STD_LOG.GDT 2/26/26

Drilling Company: **Boart Longyear**
 Drilling Method: **Sonic Drilling**
 Logged By: **T. Gordon**

Date Started: **12/10/25**
 Date Ended: **12/11/25** Elevation: **1262.0 ft**
 Boring Diameter: **8"7"** Total Depth: **180.0 ft**
 Well Diameter: **2"**

3900 Kilroy Airport Way, Suite 300
 Long Beach, California 90806-6816

BORING NUMBER: SW2503-MD/D

Page 2 of 6

Chiquita Canyon Landfill

JOB NUMBER: 01204123.41

STANDARD_LOG_01204123.41_SVE BORING LOGS.GPJ STD_LOG.GDT 2/26/26

Depth		Sample Information					Graphic Log	Description	Completion Detail
meters	feet	Sample Location	Sample Number	Blow Counts	OVM (ppm)	USCS Soil Class.			
30	30					SP	Brown with Light Gray, Sand with Some Silt and Gravel, Poorly Graded, Moist	<p>Schedule 40 PVC Casing</p> <p>SW2503-D</p> <p>SW2503-MD</p> <p>3/8" Pea Gravel</p>	
10	35								
35	11								
12	40								
13	45								
14	50								
15	55								
16	60					SP			
17	65						Reddish Brown, Coarse Sand with Silt and Some Gravel, Poorly Graded, Moist		
18									
19									
20									

3900 Kilroy Airport Way, Suite 300
 Long Beach, California 90806-6816

BORING NUMBER: SW2503-MD/D

Page 3 of 6

Chiquita Canyon Landfill

JOB NUMBER: 01204123.41

Depth		Sample Information					Graphic Log	Description	Completion Detail
meters	feet	Sample Location	Sample Number	Blow Counts	OVM (ppm)	USCS Soil Class.			
21	70					SP	Light Grayish Brown, Coarse Sand with Some Silt and Gravel, Poorly Graded, Moist		
22	75								
23	75						No Recovery from 78-80 feet bgs		
24	80								
25	80						Brown, Coarse Sand with Some Silt and Trace Gravel, Poorly Graded, Moist		
26	85								
27	90					SP			
28	90								
29	95								
30	100								
31	100								

STANDARD_LOG_01204123.41_SVE_BORING_LOGS.GPJ_STD_LOG_GDT_2/26/26

SW2503-D

SW2503-MD

3/8" Pea Gravel

Schedule 40 PVC Casing

3900 Kilroy Airport Way, Suite 300
Long Beach, California 90806-6816

BORING NUMBER: SW2503-MD/D

Page 4 of 6

Chiquita Canyon Landfill

JOB NUMBER: 01204123.41

Depth		Sample Information					Graphic Log	Description	Completion Detail
meters	feet	Sample Location	Sample Number	Blow Counts	OVM (ppm)	USCS Soil Class.			
32	105								
33									
	110					SP	Light Grayish Brown, Sand with Some Silt and Trace Gravel, Poorly Graded, Moist	<p>Schedule 40 PVC Casing</p> <p>SW2503-MD</p> <p>SW2503-D</p>	
34									
35	115								
36									
	120					SP	Light Gray, Sand with Some Silt and Trace Gravel, Poorly Graded, Moist	<p>Schedule 40 PVC Slotted Screen</p>	
37									
38	125								
39									
	130					SP	Gray, Coarse Sand with Some Silt and Trace Gravel, Poorly Graded, Moist	<p>End Cap</p> <p>3/8" Pea Gravel</p>	
40									
41	135								
42									

STANDARD_LOG_01204123.41_SVE_BORING_LOGS.GPJ STD_LOG.GDT 2/26/26

3900 Kilroy Airport Way, Suite 300
Long Beach, California 90806-6816

BORING NUMBER: SW2503-MD/D

Page 5 of 6

Chiquita Canyon Landfill

JOB NUMBER: 01204123.41

STANDARD_LOG_01204123.41_SVE_BORING_LOGS.GPJ STD_LOG.GDT 2/26/26

Depth		Sample Information					Graphic Log	Description	Completion Detail
meters	feet	Sample Location	Sample Number	Blow Counts	OVM (ppm)	USCS Soil Class.			
140	43					SP	Gray, Coarse Sand with Some Silt, Poorly Graded, Moist	<p>Schedule 40 PVC Casing</p> <p>3/8" Pea Gravel</p> <p>Hydrated Bentonite</p> <p>SW2503-D</p> <p>3/8" Pea Gravel</p> <p>Schedule 40 PVC Slotted Screen</p>	
145	44								
150	46						Gray and Brown, Sand with Some Silt, Poorly Graded, Moist		
155	47					SP			
160	49								
165	50								
170	52								
175	53								

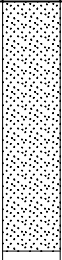
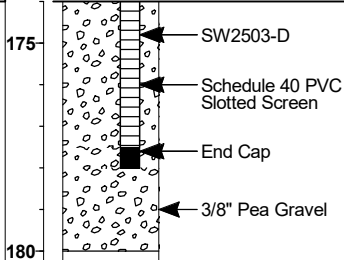
3900 Kilroy Airport Way, Suite 300
 Long Beach, California 90806-6816

BORING NUMBER: SW2503-MD/D

Page 6 of 6

Chiquita Canyon Landfill

JOB NUMBER: 01204123.41

Depth		Sample Information					Graphic Log	Description	Completion Detail
meters	feet	Sample Location	Sample Number	Blow Counts	OVM (ppm)	USCS Soil Class.			
175	54					SP			
180	55								
185	56								
190	57								
195	58								
200	59								
205	60								
210	61								

STANDARD_LOG_01204123.41_SVE_BORING_LOGS.GPJ STD_LOG.GDT 2/26/26

3900 Kilroy Airport Way, Suite 300
 Long Beach, California 90806-6816

BORING NUMBER: SW2504-S/M Page 1 of 3

Chiquita Canyon Landfill
29201 Henry Mayo Drive
Castaic, California

JOB NUMBER: 01204123.41

REMARKS:

Depth		Sample Information					Graphic Log	Description	Completion Detail
meters	feet	Sample Location	Sample Number	Blow Counts	OVM (ppm)	USCS Soil Class.			
0	0					SP	Light Brown, Coarse Sand, Poorly Graded, Moist		
1	5								
3	10					SP	Light Gray, Coarse Sand, Poorly Graded, Moist		
4	15								
6	20								
7	25								
8									
9	30								

STANDARD_LOG 01204123.41 SVE BORING LOGS.GPJ STD_LOG.GDT 2/26/26

Drilling Company: **Boart Longyear**
 Drilling Method: **Sonic Drilling**
 Logged By: **D. Faulkner**

Date Started: **12/2/25**
 Date Ended: **12/2/25** Elevation: **1270.0 ft**
 Boring Diameter: **8"** Total Depth: **78.0 ft**
 Well Diameter: **2"**

3900 Kilroy Airport Way, Suite 300
 Long Beach, California 90806-6816

BORING NUMBER: SW2504-S/M Page 2 of 3

Chiquita Canyon Landfill

JOB NUMBER: 01204123.41

STANDARD_LOG_01204123.41_SVE BORING LOGS.GPJ STD_LOG.GDT 2/26/26

Schedule 40 PVC Casing

3/8" Pea Gravel

SW2504-M

Hydrated Bentonite

3900 Kilroy Airport Way, Suite 300
 Long Beach, California 90806-6816

BORING NUMBER: SW2504-S/M Page 3 of 3

Chiquita Canyon Landfill

JOB NUMBER: 01204123.41

Depth		Sample Information					Graphic Log	Description	Completion Detail
meters	feet	Sample Location	Sample Number	Blow Counts	OVM (ppm)	USCS Soil Class.			
21	70					SP	Brown, Coarse Sand, Poorly Graded, Moist	<p>3/8" Pea Gravel</p> <p>Schedule 40 PVC Slotted Screen</p> <p>SW2504-M</p> <p>End Cap</p>	
22	75								
23	75								
24	80								
25									
26	85								
27	90								
28									
29	95								
30	100								
31									

STANDARD_LOG_01204123.41_SVE BORING LOGS.GPJ STD_LOG.GDT 2/26/26

3900 Kilroy Airport Way, Suite 300
 Long Beach, California 90806-6816

BORING NUMBER: SW2504-MD/D

Page 1 of 6

Chiquita Canyon Landfill
29201 Henry Mayo Drive
Castaic, California

JOB NUMBER: 01204123.41

REMARKS:

Depth		Sample Information					Graphic Log	Description	Completion Detail
meters	feet	Sample Location	Sample Number	Blow Counts	OVM (ppm)	USCS Soil Class.			
0	0					SP	Light Brown, Coarse Sand with Some Gravel, Poorly Graded, Moist		
1	5								
3	10					SP			Brown, Coarse Sand with Some Gravel, Poorly Graded, Moist
4	15						Brown, Coarse Sand with Trace Gravel, Poorly Graded, Moist		
6	20					SP			
7	25						Brown, Coarse Sand with Trace Gravel, Poorly Graded, Moist		
8	30								

STANDARD_LOG_01204123.41_SVE BORING LOGS.GPJ STD_LOG.GDT 2/26/26

Drilling Company: **Boart Longyear**
 Drilling Method: **Sonic Drilling**
 Logged By: **T. Gordon/D. Faulkner**

Date Started: **11/13/25**
 Date Ended: **12/2/25**
 Boring Diameter: **8"7"**
 Well Diameter: **2"**
 Elevation: **1270.0 ft**
 Total Depth: **180.0 ft**

3900 Kilroy Airport Way, Suite 300
Long Beach, California 90806-6816

BORING NUMBER: SW2504-MD/D

Page 2 of 6

Chiquita Canyon Landfill

JOB NUMBER: 01204123.41

Depth		Sample Information					Graphic Log	Description	Completion Detail
meters	feet	Sample Location	Sample Number	Blow Counts	OVM (ppm)	USCS Soil Class.			
30	30					SP	Light Gray and Brown, Coarse Sand with Some Silt and Gravel, Poorly Graded, Moist	<p>Schedule 40 PVC Casing</p> <p>SW2504-D</p> <p>SW2504-MD</p> <p>3/8" Pea Gravel</p>	
10	35								
35	11						Red and Brown, Coarse Sand with Silt and Some Gravel, Poorly Graded, Moist		
12	40					SP			
13	45								
14	50								
15	55								
16	60								
17	65								
18									
19									
20									

STANDARD_LOG_01204123.41_SVE BORING LOGS.GPJ STD_LOG.GDT 2/26/26

3900 Kilroy Airport Way, Suite 300
Long Beach, California 90806-6816

BORING NUMBER: SW2504-MD/D

Page 3 of 6

Chiquita Canyon Landfill

JOB NUMBER: 01204123.41

STANDARD_LOG_01204123.41_SVE BORING LOGS.GPJ STD_LOG.GDT 2/26/26

3900 Kilroy Airport Way, Suite 300
Long Beach, California 90806-6816

BORING NUMBER: SW2504-MD/D

Page 4 of 6

Chiquita Canyon Landfill

JOB NUMBER: 01204123.41

Depth		Sample Information					Graphic Log	Description	Completion Detail
meters	feet	Sample Location	Sample Number	Blow Counts	OVM (ppm)	USCS Soil Class.			
32	105								
33									
	110					SP	Light Gray and Brown, Coarse Sand with Silt and Trace Gravel, Poorly Graded, Moist	<p>Schedule 40 PVC Casing</p> <p>SW2504-MD</p> <p>SW2504-D</p>	
34									
35	115								
36									
	120					SP	Light Gray, Coarse Sand with Silt and Trace Gravel, Poorly Graded, Moist	<p>Schedule 40 PVC Slotted Screen</p> <p>End Cap</p> <p>3/8" Pea Gravel</p>	
37									
38	125								
39									
	130								
40									
41	135								
42									

STANDARD_LOG_01204123.41_SVE_BORING_LOGS.GPJ STD_LOG.GDT 2/26/26

3900 Kilroy Airport Way, Suite 300
 Long Beach, California 90806-6816

BORING NUMBER: SW2504-MD/D

Page 5 of 6

Chiquita Canyon Landfill

JOB NUMBER: 01204123.41

Depth		Sample Information					Graphic Log	Description	Completion Detail
meters	feet	Sample Location	Sample Number	Blow Counts	OVM (ppm)	USCS Soil Class.			
140	43					SP	Gray, Coarse Sand with Silt, Poorly Graded, Moist	<p>Schedule 40 PVC Casing</p> <p>Hydrated Bentonite</p> <p>SW2504-D</p> <p>3/8" Pea Gravel</p> <p>Schedule 40 PVC Slotted Screen</p>	
145	44								
150	45					SP	Dark Gray, Coarse Sand, Poorly Graded, Moist		
155	46								
160	47								
165	48								
170	49								
170	50								
170	51								
170	52					SP	Light Brown, Coarse Sand, Poorly Graded		
170	53								

STANDARD_LOG_01204123.41_SVE_BORING_LOGS.GPJ STD_LOG.GDT 2/26/26

3900 Kilroy Airport Way, Suite 300
 Long Beach, California 90806-6816

BORING NUMBER: SW2504-MD/D

Page 6 of 6

Chiquita Canyon Landfill

JOB NUMBER: 01204123.41

Depth		Sample Information					Graphic Log	Description	Completion Detail
meters	feet	Sample Location	Sample Number	Blow Counts	OVM (ppm)	USCS Soil Class.			
175	54					SP	Light Brown, Coarse Sand, Poorly Graded	<p>SW2504-D Schedule 40 PVC Slotted Screen End Cap 3/8" Pea Gravel</p>	
180	55								
185	56								
190	57								
195	58								
200	59								
205	60								
210	61								

STANDARD_LOG_01204123.41_SVE_BORING_LOGS.GPJ STD_LOG.GDT 2/26/26