

Archivado: Viernes 6 de febrero de 2026 9:13:47 AM
De: [Sarah Phillips](#)
Enviado: Jueves 5 de febrero de 2026 8:04:34 PM
Para: [Baitong Chen](#)
Cc: [Kevin Green](#)
Asunto: Vertedero de Chiquita Canyon – Caso No. 6177-4 – Condición 38 Muestreo
Importancia: Normal
Sensibilidad: Ninguna
Adjuntos: [Outlook-Descriptio.png](#); [Outlook-Descriptio.png 52027_level2.pdf](#); [ank Manifold Map - 01.05.2026.pdf](#)

Todos,

En cumplimiento con la Condición 38 de la Orden de Depuración Estipulada, Caso No. 6177-4, Chiquita Canyon, LLC adjunta los resultados analíticos de los lixiviados de su toma de muestra representativa de líquidos mensual del Área de Reacción y de los tanques inferiores. En los resultados analíticos adjuntos recibidos el 3 de febrero de 2026, el código de muestreo CACA260201Z007LCM624.1 corresponde a la muestra tomada de los tanques del Colector LC No. 4 y el código de muestreo ID CACA260201Z001A624.1 corresponde a la muestra tomada en un puerto de toma de muestras que se instaló flujo arriba en el cabezal del Grupo A del Parque de Tanques No. 13. Se adjunta un mapa de estos puntos de toma de muestras como referencia. El punto de toma de muestras en los tanques del Colector LC No. 4 son representativos de las muestras mensuales del área del Vertedero que no están afectadas por la reacción. Los tanques del Colector LC No. 4 reciben los lixiviados que se alimentan por gravedad del revestimiento del vertedero. A estos tanques también se los denomina "tanques inferiores" y recogen líquidos/lixiviados de todo el Vertedero. El punto de toma de muestras en el puerto de muestreo flujo arriba de los tanques del Grupo A del Parque de Tanques No. 7 (que es un grupo de tanques ubicado dentro del Parque de Tanques No. 7 como se muestra en el mapa adjunto) es una muestra mensual representativa del Área de Reacción. Este grupo de tanques recoge líquidos/lixiviados no tratados, bombeados de toda el Área de Reacción.

Sarah Phillips

248.930.2779

Gerente de Cumplimiento Corporativo

Waste Connections





ENTHALPY
ANALYTICAL

Enthalpy Analytical
931 West Barkley Ave
Orange, CA 92868
(714) 771-6900

enthalpy.com

Lab Job Number : 552027
Report Level : II
Report Date : 02/03/2026

Analytical Report *prepared for:*

Kyle Lopic
CTEH Chiquita Canyon Landfill - PROJ-037507
5120 Northshore Drive
North Little Rock, AR 72118

Project: CHIQUITA MONTHLY - Monthly EPA 624.1 - SOFA Condition 38

Authorized for release by:

David Tripp, Project Manager
657-581-4710
david.tripp@enthalpy.com

This data package has been reviewed for technical correctness and completeness. Release of this data has been authorized by the Laboratory Manager or the Manager's designee, as verified by the above signature which applies to this PDF file as well as any associated electronic data deliverable files. The results contained in this report meet all requirements of NELAP and pertain only to those samples which were submitted for analysis. This report may be reproduced only in its entirety.

CA ELAP# 1338, CA ELAP #1338-S1, NELAP# 4038, SCAQMD LAP# 18LA0518, LACSD ID# 10105, ORELAP# 4197

Sample Summary

Kyle Lopic CTEH Chiquita Canyon Landfill - PROJ-037507 5120 Northshore Drive North Little Rock, AR 72118	Lab Job #: 552027 Project No: CHIQUITA MONTHLY Location: Monthly EPA 624.1 - SOFA Condition 38 Date Received: 02/02/26	
---	---	--

Sample ID	Lab ID	Collected	Matrix
CACA260201Z001A624.1	552027-001	02/01/26 07:15	Water
CACA260201Z007LCM624.1	552027-002	02/01/26 07:30	Water
CACA260201TB001	552027-003	02/01/26 07:50	Water

Case Narrative

CTEH Chiquita Canyon Landfill - PROJ-
037507
5120 Northshore Drive
North Little Rock, AR 72118
Kyle Lopic

Lab Job Number: 552027
Project No: CHIQUITA MONTHLY
Location: Monthly EPA 624.1 - SOFA
Condition 38
Date Received: 02/02/26

This data package contains sample and QC results for three water samples, requested for the above referenced project on 02/02/26. The samples were received in good condition. Samples 001 and 002 were analyzed twice to confirm the results due to inconsistencies with historical data (the results reported were confirmed).

Volatile Organics by GC/MS (EPA 624.1):

- High response was observed for acrolein in the CCV analyzed 02/02/26 08:53; affected data was qualified with "b".
- Low response was observed for bromomethane in the CCV analyzed 02/02/26 09:17; this analyte met minimum response criteria, and affected data was qualified with "b".
- High recovery was observed for acrolein in the LCS for batch 394175; this analyte was not detected at or above the RL in the associated samples.
- Responses exceeding the instrument's linear range were observed for acetone and 2-butanone in CACA260201Z001A624.1 (lab # 552027-001) and CACA260201Z007LCM624.1 (lab # 552027-002); affected data was qualified with "E".
- CACA260201Z001A624.1 (lab # 552027-001), CACA260201Z007LCM624.1 (lab # 552027-002), and CACA260201TB001 (lab # 552027-003) had pH greater than 2.
- No other analytical problems were encountered.

Detection Summary

Kyle Lopic
 CTEH Chiquita Canyon Landfill - PROJ-037507
 5120 Northshore Drive
 North Little Rock, AR 72118

Lab Job #: 552027
 Project No: CHIQUITA MONTHLY
 Location: Monthly EPA 624.1 - SOFA Condition 38
 Date Received: 02/02/26

Sample ID: CACA260201Z001A624.1 Lab ID: 552027-001 Collected: 02/01/26 07:15
Matrix: Water

552027-001 Analyte	Result	Qual	Units	RL	MDL
Method: EPA 624.1					
Prep Method: EPA 624.1					
Acetone	32,000	E	ug/L	680	680
2-Butanone	29,000	E	ug/L	500	66
Benzene	28		ug/L	25	6.6
4-Methyl-2-Pentanone	160	J	ug/L	500	51
Toluene	16	J	ug/L	25	6.0
Ethylbenzene	7.9	J	ug/L	25	4.9
o-Xylene	6.5	J	ug/L	25	6.2
para-Isopropyl Toluene	49		ug/L	25	7.7
tert-Butyl Alcohol (TBA)	3,500		ug/L	500	130
Xylene (total)	6.5	J	ug/L	25	

Sample ID: CACA260201Z007LCM624.1 Lab ID: 552027-002 Collected: 02/01/26 07:30
Matrix: Water

552027-002 Analyte	Result	Qual	Units	RL	MDL
Method: EPA 624.1					
Prep Method: EPA 624.1					
Acetone	42,000	E	ug/L	680	680
2-Butanone	23,000		ug/L	500	66
Benzene	910		ug/L	25	6.6
4-Methyl-2-Pentanone	530		ug/L	500	51
Toluene	130		ug/L	25	6.0
Chlorobenzene	6.6	J	ug/L	25	6.2
Ethylbenzene	120		ug/L	25	4.9
m,p-Xylenes	120		ug/L	25	11
o-Xylene	61		ug/L	25	6.2
Styrene	10	J	ug/L	25	7.1
Isopropylbenzene	100		ug/L	25	6.5
Propylbenzene	39		ug/L	25	7.4
1,3,5-Trimethylbenzene	40		ug/L	25	6.6
1,2,4-Trimethylbenzene	170		ug/L	25	7.5
sec-Butylbenzene	10	J	ug/L	25	7.7
para-Isopropyl Toluene	2,600		ug/L	25	7.7
1,4-Dichlorobenzene	48		ug/L	25	10
n-Butylbenzene	26		ug/L	25	7.0
Naphthalene	150		ug/L	100	32
tert-Butyl Alcohol (TBA)	1,500		ug/L	500	130
Xylene (total)	180		ug/L	25	

Detection Summary

Sample ID: CACA260201TB001

Lab ID: 552027-003

Collected: 02/01/26 07:50

No Detections

- E Response exceeds instrument's linear range
- J Estimated value



Enthalpy Analytical - Orange

931 W. Barkley Avenue, Orange, CA 92868
Phone 714-771-6900

Chain of Custody Record

Lab No: 552027
Page: 1 of 1

Matrix: A = Air S = Soil/Solid
Water DW = Drinking Water SD = Sediment
PP = Pure Product SEA = Sea Water
SW = Swab T = Tissue WP = Wipe O = Other

Turn Around Time (rush by advanced notice only)

Standard: 5 Day: 3 Day:
2 Day: 1 Day: Custom TAT: X

Preservatives: 1 =
Na₂S₂O₃ 2 = HCl 3 = HNO₃
4 = H₂SO₄ 5 = NaOH 6 = Other
Sample Receipt Temp: 4/0/4 L
172/0 CF: 10.1
(lab use only)

CUSTOMER INFORMATION		PROJECT INFORMATION				Analysis Request		Test Instructions / Comments	
Company:	CTEH	LIMS Account:	CTEH-CHIQUITA				DAILY LEACHATES		
Report To:	Kyle Lopic	LIMS Proj. Name:	WC CHIQUITACANYON LF				For reporting total concentrations on TCLP List analytes.		
Email:	labresults@cteh.com	Project #:	Proj-037507				HOLD samples for further process, as needed. Then return to Chiquita Canyon LF.		
Address:	5120 North Shore Drive	P.O. #:	PO-4050-24-00351				Email report to:		
	North Little Rock, AR 72118	Address:	29201 Henry Mayo Dr., Castaic, CA				kylapic@montrose-env.com		
Phone:	504-616-2427	Global ID:					labresults@cteh.com; et al.		
Fax:		Sampled By:	MT, GA						

Sample ID	Sampling Date	Sampling Time	Matrix	Container No. / Size	Pres.	Analysis Request	Test Instructions / Comments
1 CACA260201Z001A624.1	02/01/26	0715	W	4	4,6		
2 CACA260201Z007LCM624.1	02/01/26	0730	W	4	4,6		
4 CACA260201TB001	02/01/26	0750	W	2	6		
4							
5							
6							
7							
8							
9							
10							

EPA 624.1
Trip Blank



Login 552027



Signature	Print Name	Company / Title	Date / Time
<i>[Signature]</i>	Math Tuggle	CTEH	2/2 0340
	Frown	CA	2/2/20 0700
1 Relinquished By:			
1 Received By:			
2 Relinquished By:			
2 Received By:			
3 Relinquished By:			
3 Received By:			

SAMPLE RECEIPT CHECKLIST



Section 1: General Info

Date Received: 02/02/26 WO# 552027 Client: CTEH

Section 2: Shipping / Custody

Are custody seals present? Yes No

Custody seals intact on arrival? N/A Yes No On cooler / box On samples

Courier Walk-In Field Sampling Shipping Info: _____

Section 3a: Condition / Packaging

Outside 0.0 - 6.0°C (0.0 - 10.0°C for microbiology) (PM notified)

Date Opened 02/02/26 By (initials) FPD Type of ice used: Wet Blue/Gel None

Samples received on ice directly from the field; cooling process had begun. (if checked, skip temperatures)

Sample matrix doesn't require cooling (e.g. air, bulk PCB). (if checked, skip temperatures)

If no cooler: Observed/Adjusted Temp (°C): _____ / _____ Thermometer/IR Gun: IR 10 CF: +0.2

Cooler Temp (°C) #1: 4.0 / 4.2 #2: _____ / _____ #3: _____ / _____ #4: _____ / _____ #5: _____ / _____ #6: _____ / _____

Section 3b: Microbiology Samples

No microbiology samples submitted (skip 3b)

Within temp range 0.0 - 10.0°C or received on ice directly from field.

Adequate headspace for microbiology analysis.

Section 3c: Air Samples

No air samples submitted (skip 3c)

1.4L Canisters 6L Canisters Tedlar Bags MCE Cassettes Sorbent Tubes Other _____

Section 4: Containers / Labels / Samples

	YES	NO	N/A
1) Were custody papers present, filled properly, and legible?	X		
2) Is the sampler's name present on the CoC?	X		
3) Were containers received in good condition (unbroken / unopened / uncompromised)?	X		
4) Were the samples bagged? (required for microbiology samples; recommended for soil samples)	X		
5) Were all of, and only, the correct samples received?	X		
6) Are sample labels present, legible, and in agreement with the CoC?	X		
7) Does the container count match the CoC?	X		
8) Was sufficient sample volume / mass received for the analyses requested?	X		
9) Were samples received in proper containers for the analyses requested?	X		
10) Were samples received with > 1/2 holding time remaining?	X		
11) Are samples properly preserved as indicated by CoC / labels?	X		
12) Unpreserved VOAs received - If necessary, was the hold time changed in LIMS?			X
13) Are VOA vials free from headspace/bubbles > 6mm?		X	

Section 5: Explanations / Comments

(If no comments are made, then no discrepancies noted.)

4.13 - HEADSPACE > 6mm IN 1/4 VIALS OF SAMPLE - 002.

No additional discrepancies

Date Logged 02/01/26 By (print) Jeth Co (sign) _____

Date Labeled 02/02/26 By (print) FPD (sign) _____

Analysis Results for 552027

Kyle Lopic
CTEH Chiquita Canyon Landfill - PROJ-037507
5120 Northshore Drive
North Little Rock, AR 72118

Lab Job #: 552027
Project No: CHIQUITA MONTHLY
Location: Monthly EPA 624.1 - SOFA Condition 38
Date Received: 02/02/26

Sample ID: CACA260201Z001A624.1 Lab ID: 552027-001 Collected: 02/01/26 07:15
Matrix: Water

552027-001 Analyte	Result	Qual	Units	RL	MDL	DF	Batch	Prepared	Analyzed	Chemist
Method: EPA 624.1										
Prep Method: EPA 624.1										
Acrolein	ND		ug/L	250	130	50	394175	02/02/26	02/02/26	ZST
Acrylonitrile	ND		ug/L	100	34	50	394175	02/02/26	02/02/26	ZST
Freon 12	ND		ug/L	50	7.5	50	394175	02/02/26	02/02/26	ZST
Chloromethane	ND		ug/L	50	4.4	50	394175	02/02/26	02/02/26	ZST
Vinyl Chloride	ND		ug/L	25	6.7	50	394175	02/02/26	02/02/26	ZST
Bromomethane	ND		ug/L	50	7.3	50	394175	02/02/26	02/02/26	ZST
Chloroethane	ND		ug/L	50	6.5	50	394175	02/02/26	02/02/26	ZST
2-Chloroethylvinylether	ND		ug/L	250	67	50	394175	02/02/26	02/02/26	ZST
Trichlorofluoromethane	ND		ug/L	50	6.7	50	394175	02/02/26	02/02/26	ZST
Acetone	32,000	E	ug/L	680	680	50	394175	02/02/26	02/02/26	ZST
Freon 113	ND		ug/L	100	6.3	50	394175	02/02/26	02/02/26	ZST
1,1-Dichloroethene	ND		ug/L	25	5.3	50	394175	02/02/26	02/02/26	ZST
Methylene Chloride	ND		ug/L	500	11	50	394175	02/02/26	02/02/26	ZST
Carbon Disulfide	ND		ug/L	50	7.2	50	394175	02/02/26	02/02/26	ZST
MTBE	ND		ug/L	25	7.5	50	394175	02/02/26	02/02/26	ZST
trans-1,2-Dichloroethene	ND		ug/L	25	6.1	50	394175	02/02/26	02/02/26	ZST
1,1-Dichloroethane	ND		ug/L	25	4.7	50	394175	02/02/26	02/02/26	ZST
2-Butanone	29,000	E	ug/L	500	66	50	394175	02/02/26	02/02/26	ZST
cis-1,2-Dichloroethene	ND		ug/L	25	6.7	50	394175	02/02/26	02/02/26	ZST
2,2-Dichloropropane	ND		ug/L	25	11	50	394175	02/02/26	02/02/26	ZST
Chloroform	ND		ug/L	25	4.0	50	394175	02/02/26	02/02/26	ZST
Bromochloromethane	ND		ug/L	25	5.0	50	394175	02/02/26	02/02/26	ZST
1,1,1-Trichloroethane	ND		ug/L	25	5.7	50	394175	02/02/26	02/02/26	ZST
1,1-Dichloropropene	ND		ug/L	25	6.3	50	394175	02/02/26	02/02/26	ZST
Carbon Tetrachloride	ND		ug/L	25	5.4	50	394175	02/02/26	02/02/26	ZST
1,2-Dichloroethane	ND		ug/L	25	7.9	50	394175	02/02/26	02/02/26	ZST
Benzene	28		ug/L	25	6.6	50	394175	02/02/26	02/02/26	ZST
Trichloroethene	ND		ug/L	25	7.3	50	394175	02/02/26	02/02/26	ZST
1,2-Dichloropropane	ND		ug/L	25	4.4	50	394175	02/02/26	02/02/26	ZST
Bromodichloromethane	ND		ug/L	25	3.4	50	394175	02/02/26	02/02/26	ZST
Dibromomethane	ND		ug/L	25	5.0	50	394175	02/02/26	02/02/26	ZST
4-Methyl-2-Pentanone	160	J	ug/L	500	51	50	394175	02/02/26	02/02/26	ZST
cis-1,3-Dichloropropene	ND		ug/L	25	4.8	50	394175	02/02/26	02/02/26	ZST
Toluene	16	J	ug/L	25	6.0	50	394175	02/02/26	02/02/26	ZST
trans-1,3-Dichloropropene	ND		ug/L	25	4.7	50	394175	02/02/26	02/02/26	ZST
1,1,2-Trichloroethane	ND		ug/L	25	5.4	50	394175	02/02/26	02/02/26	ZST
2-Hexanone	ND		ug/L	500	65	50	394175	02/02/26	02/02/26	ZST
1,3-Dichloropropane	ND		ug/L	25	3.7	50	394175	02/02/26	02/02/26	ZST
Tetrachloroethene	ND		ug/L	25	8.5	50	394175	02/02/26	02/02/26	ZST
Dibromochloromethane	ND		ug/L	25	6.2	50	394175	02/02/26	02/02/26	ZST
1,2-Dibromoethane	ND		ug/L	25	6.7	50	394175	02/02/26	02/02/26	ZST

Analysis Results for 552027

552027-001 Analyte	Result	Qual	Units	RL	MDL	DF	Batch	Prepared	Analyzed	Chemist
Chlorobenzene	ND		ug/L	25	6.2	50	394175	02/02/26	02/02/26	ZST
1,1,1,2-Tetrachloroethane	ND		ug/L	25	3.6	50	394175	02/02/26	02/02/26	ZST
Ethylbenzene	7.9	J	ug/L	25	4.9	50	394175	02/02/26	02/02/26	ZST
m,p-Xylenes	ND		ug/L	25	11	50	394175	02/02/26	02/02/26	ZST
o-Xylene	6.5	J	ug/L	25	6.2	50	394175	02/02/26	02/02/26	ZST
Styrene	ND		ug/L	25	7.1	50	394175	02/02/26	02/02/26	ZST
Bromoform	ND		ug/L	50	3.0	50	394175	02/02/26	02/02/26	ZST
Isopropylbenzene	ND		ug/L	25	6.5	50	394175	02/02/26	02/02/26	ZST
1,1,2,2-Tetrachloroethane	ND		ug/L	25	6.1	50	394175	02/02/26	02/02/26	ZST
1,2,3-Trichloropropane	ND		ug/L	25	14	50	394175	02/02/26	02/02/26	ZST
Propylbenzene	ND		ug/L	25	7.4	50	394175	02/02/26	02/02/26	ZST
Bromobenzene	ND		ug/L	25	7.1	50	394175	02/02/26	02/02/26	ZST
1,3,5-Trimethylbenzene	ND		ug/L	25	6.6	50	394175	02/02/26	02/02/26	ZST
2-Chlorotoluene	ND		ug/L	25	5.7	50	394175	02/02/26	02/02/26	ZST
4-Chlorotoluene	ND		ug/L	25	7.7	50	394175	02/02/26	02/02/26	ZST
tert-Butylbenzene	ND		ug/L	25	5.7	50	394175	02/02/26	02/02/26	ZST
1,2,4-Trimethylbenzene	ND		ug/L	25	7.5	50	394175	02/02/26	02/02/26	ZST
sec-Butylbenzene	ND		ug/L	25	7.7	50	394175	02/02/26	02/02/26	ZST
para-Isopropyl Toluene	49		ug/L	25	7.7	50	394175	02/02/26	02/02/26	ZST
1,3-Dichlorobenzene	ND		ug/L	25	6.6	50	394175	02/02/26	02/02/26	ZST
1,4-Dichlorobenzene	ND		ug/L	25	10	50	394175	02/02/26	02/02/26	ZST
n-Butylbenzene	ND		ug/L	25	7.0	50	394175	02/02/26	02/02/26	ZST
1,2-Dichlorobenzene	ND		ug/L	25	6.1	50	394175	02/02/26	02/02/26	ZST
1,2-Dibromo-3-Chloropropane	ND		ug/L	100	32	50	394175	02/02/26	02/02/26	ZST
1,2,4-Trichlorobenzene	ND		ug/L	25	15	50	394175	02/02/26	02/02/26	ZST
Hexachlorobutadiene	ND		ug/L	100	13	50	394175	02/02/26	02/02/26	ZST
Naphthalene	ND		ug/L	100	32	50	394175	02/02/26	02/02/26	ZST
1,2,3-Trichlorobenzene	ND		ug/L	25	14	50	394175	02/02/26	02/02/26	ZST
Isopropyl Ether (DIPE)	ND		ug/L	25	6.2	50	394175	02/02/26	02/02/26	ZST
Ethyl tert-Butyl Ether (ETBE)	ND		ug/L	25	6.0	50	394175	02/02/26	02/02/26	ZST
tert-Butyl Alcohol (TBA)	3,500		ug/L	500	130	50	394175	02/02/26	02/02/26	ZST
Methyl tert-Amyl Ether (TAME)	ND		ug/L	25	6.2	50	394175	02/02/26	02/02/26	ZST
Xylene (total)	6.5	J	ug/L	25		50	394175	02/02/26	02/02/26	ZST
Total Trihalomethanes (THMs)	ND		ug/L	25		50	394175	02/02/26	02/02/26	ZST
Surrogates				Limits						
Dibromofluoromethane	100%		%REC	70-130		50	394175	02/02/26	02/02/26	ZST
1,2-Dichloroethane-d4	101%		%REC	70-130		50	394175	02/02/26	02/02/26	ZST
Toluene-d8	100%		%REC	70-130		50	394175	02/02/26	02/02/26	ZST
Bromofluorobenzene	92%		%REC	70-130		50	394175	02/02/26	02/02/26	ZST

Analysis Results for 552027

Sample ID: CACA260201Z007LCM624.1	Lab ID: 552027-002 Matrix: Water	Collected: 02/01/26 07:30
---	---	----------------------------------

552027-002 Analyte	Result	Qual	Units	RL	MDL	DF	Batch	Prepared	Analyzed	Chemist
Method: EPA 624.1										
Prep Method: EPA 624.1										
Acrolein	ND		ug/L	250	130	50	394175	02/02/26	02/02/26	ZST
Acrylonitrile	ND		ug/L	100	34	50	394175	02/02/26	02/02/26	ZST
Freon 12	ND		ug/L	50	7.5	50	394175	02/02/26	02/02/26	ZST
Chloromethane	ND		ug/L	50	4.4	50	394175	02/02/26	02/02/26	ZST
Vinyl Chloride	ND		ug/L	25	6.7	50	394175	02/02/26	02/02/26	ZST
Bromomethane	ND		ug/L	50	7.3	50	394175	02/02/26	02/02/26	ZST
Chloroethane	ND		ug/L	50	6.5	50	394175	02/02/26	02/02/26	ZST
2-Chloroethylvinylether	ND		ug/L	250	67	50	394175	02/02/26	02/02/26	ZST
Trichlorofluoromethane	ND		ug/L	50	6.7	50	394175	02/02/26	02/02/26	ZST
Acetone	42,000	E	ug/L	680	680	50	394175	02/02/26	02/02/26	ZST
Freon 113	ND		ug/L	100	6.3	50	394175	02/02/26	02/02/26	ZST
1,1-Dichloroethene	ND		ug/L	25	5.3	50	394175	02/02/26	02/02/26	ZST
Methylene Chloride	ND		ug/L	500	11	50	394175	02/02/26	02/02/26	ZST
Carbon Disulfide	ND		ug/L	50	7.2	50	394175	02/02/26	02/02/26	ZST
MTBE	ND		ug/L	25	7.5	50	394175	02/02/26	02/02/26	ZST
trans-1,2-Dichloroethene	ND		ug/L	25	6.1	50	394175	02/02/26	02/02/26	ZST
1,1-Dichloroethane	ND		ug/L	25	4.7	50	394175	02/02/26	02/02/26	ZST
2-Butanone	23,000		ug/L	500	66	50	394175	02/02/26	02/02/26	ZST
cis-1,2-Dichloroethene	ND		ug/L	25	6.7	50	394175	02/02/26	02/02/26	ZST
2,2-Dichloropropane	ND		ug/L	25	11	50	394175	02/02/26	02/02/26	ZST
Chloroform	ND		ug/L	25	4.0	50	394175	02/02/26	02/02/26	ZST
Bromochloromethane	ND		ug/L	25	5.0	50	394175	02/02/26	02/02/26	ZST
1,1,1-Trichloroethane	ND		ug/L	25	5.7	50	394175	02/02/26	02/02/26	ZST
1,1-Dichloropropene	ND		ug/L	25	6.3	50	394175	02/02/26	02/02/26	ZST
Carbon Tetrachloride	ND		ug/L	25	5.4	50	394175	02/02/26	02/02/26	ZST
1,2-Dichloroethane	ND		ug/L	25	7.9	50	394175	02/02/26	02/02/26	ZST
Benzene	910		ug/L	25	6.6	50	394175	02/02/26	02/02/26	ZST
Trichloroethene	ND		ug/L	25	7.3	50	394175	02/02/26	02/02/26	ZST
1,2-Dichloropropane	ND		ug/L	25	4.4	50	394175	02/02/26	02/02/26	ZST
Bromodichloromethane	ND		ug/L	25	3.4	50	394175	02/02/26	02/02/26	ZST
Dibromomethane	ND		ug/L	25	5.0	50	394175	02/02/26	02/02/26	ZST
4-Methyl-2-Pentanone	530		ug/L	500	51	50	394175	02/02/26	02/02/26	ZST
cis-1,3-Dichloropropene	ND		ug/L	25	4.8	50	394175	02/02/26	02/02/26	ZST
Toluene	130		ug/L	25	6.0	50	394175	02/02/26	02/02/26	ZST
trans-1,3-Dichloropropene	ND		ug/L	25	4.7	50	394175	02/02/26	02/02/26	ZST
1,1,2-Trichloroethane	ND		ug/L	25	5.4	50	394175	02/02/26	02/02/26	ZST
2-Hexanone	ND		ug/L	500	65	50	394175	02/02/26	02/02/26	ZST
1,3-Dichloropropane	ND		ug/L	25	3.7	50	394175	02/02/26	02/02/26	ZST
Tetrachloroethene	ND		ug/L	25	8.5	50	394175	02/02/26	02/02/26	ZST
Dibromochloromethane	ND		ug/L	25	6.2	50	394175	02/02/26	02/02/26	ZST
1,2-Dibromoethane	ND		ug/L	25	6.7	50	394175	02/02/26	02/02/26	ZST
Chlorobenzene	6.6	J	ug/L	25	6.2	50	394175	02/02/26	02/02/26	ZST
1,1,1,2-Tetrachloroethane	ND		ug/L	25	3.6	50	394175	02/02/26	02/02/26	ZST
Ethylbenzene	120		ug/L	25	4.9	50	394175	02/02/26	02/02/26	ZST
m,p-Xylenes	120		ug/L	25	11	50	394175	02/02/26	02/02/26	ZST

Analysis Results for 552027

552027-002 Analyte	Result	Qual	Units	RL	MDL	DF	Batch	Prepared	Analyzed	Chemist
o-Xylene	61		ug/L	25	6.2	50	394175	02/02/26	02/02/26	ZST
Styrene	10	J	ug/L	25	7.1	50	394175	02/02/26	02/02/26	ZST
Bromoform	ND		ug/L	50	3.0	50	394175	02/02/26	02/02/26	ZST
Isopropylbenzene	100		ug/L	25	6.5	50	394175	02/02/26	02/02/26	ZST
1,1,2,2-Tetrachloroethane	ND		ug/L	25	6.1	50	394175	02/02/26	02/02/26	ZST
1,2,3-Trichloropropane	ND		ug/L	25	14	50	394175	02/02/26	02/02/26	ZST
Propylbenzene	39		ug/L	25	7.4	50	394175	02/02/26	02/02/26	ZST
Bromobenzene	ND		ug/L	25	7.1	50	394175	02/02/26	02/02/26	ZST
1,3,5-Trimethylbenzene	40		ug/L	25	6.6	50	394175	02/02/26	02/02/26	ZST
2-Chlorotoluene	ND		ug/L	25	5.7	50	394175	02/02/26	02/02/26	ZST
4-Chlorotoluene	ND		ug/L	25	7.7	50	394175	02/02/26	02/02/26	ZST
tert-Butylbenzene	ND		ug/L	25	5.7	50	394175	02/02/26	02/02/26	ZST
1,2,4-Trimethylbenzene	170		ug/L	25	7.5	50	394175	02/02/26	02/02/26	ZST
sec-Butylbenzene	10	J	ug/L	25	7.7	50	394175	02/02/26	02/02/26	ZST
para-Isopropyl Toluene	2,600		ug/L	25	7.7	50	394175	02/02/26	02/02/26	ZST
1,3-Dichlorobenzene	ND		ug/L	25	6.6	50	394175	02/02/26	02/02/26	ZST
1,4-Dichlorobenzene	48		ug/L	25	10	50	394175	02/02/26	02/02/26	ZST
n-Butylbenzene	26		ug/L	25	7.0	50	394175	02/02/26	02/02/26	ZST
1,2-Dichlorobenzene	ND		ug/L	25	6.1	50	394175	02/02/26	02/02/26	ZST
1,2-Dibromo-3-Chloropropane	ND		ug/L	100	32	50	394175	02/02/26	02/02/26	ZST
1,2,4-Trichlorobenzene	ND		ug/L	25	15	50	394175	02/02/26	02/02/26	ZST
Hexachlorobutadiene	ND		ug/L	100	13	50	394175	02/02/26	02/02/26	ZST
Naphthalene	150		ug/L	100	32	50	394175	02/02/26	02/02/26	ZST
1,2,3-Trichlorobenzene	ND		ug/L	25	14	50	394175	02/02/26	02/02/26	ZST
Isopropyl Ether (DIPE)	ND		ug/L	25	6.2	50	394175	02/02/26	02/02/26	ZST
Ethyl tert-Butyl Ether (ETBE)	ND		ug/L	25	6.0	50	394175	02/02/26	02/02/26	ZST
tert-Butyl Alcohol (TBA)	1,500		ug/L	500	130	50	394175	02/02/26	02/02/26	ZST
Methyl tert-Amyl Ether (TAME)	ND		ug/L	25	6.2	50	394175	02/02/26	02/02/26	ZST
Xylene (total)	180		ug/L	25		50	394175	02/02/26	02/02/26	ZST
Total Trihalomethanes (THMs)	ND		ug/L	25		50	394175	02/02/26	02/02/26	ZST
Surrogates				Limits						
Dibromofluoromethane	100%		%REC	70-130		50	394175	02/02/26	02/02/26	ZST
1,2-Dichloroethane-d4	101%		%REC	70-130		50	394175	02/02/26	02/02/26	ZST
Toluene-d8	100%		%REC	70-130		50	394175	02/02/26	02/02/26	ZST
Bromofluorobenzene	95%		%REC	70-130		50	394175	02/02/26	02/02/26	ZST

Analysis Results for 552027

Sample ID: CACA260201TB001
Lab ID: 552027-003
Collected: 02/01/26 07:50
Matrix: Water

552027-003 Analyte	Result	Qual	Units	RL	MDL	DF	Batch	Prepared	Analyzed	Chemist
Method: EPA 624.1										
Prep Method: EPA 624.1										
Acrolein	ND		ug/L	5.0	2.6	1	394175	02/02/26	02/02/26	ZST
Acrylonitrile	ND		ug/L	2.0	0.7	1	394175	02/02/26	02/02/26	ZST
Freon 12	ND		ug/L	1.0	0.2	1	394175	02/02/26	02/02/26	ZST
Chloromethane	ND		ug/L	1.0	0.09	1	394175	02/02/26	02/02/26	ZST
Vinyl Chloride	ND		ug/L	0.5	0.1	1	394175	02/02/26	02/02/26	ZST
Bromomethane	ND		ug/L	1.0	0.1	1	394175	02/02/26	02/02/26	ZST
Chloroethane	ND		ug/L	1.0	0.1	1	394175	02/02/26	02/02/26	ZST
2-Chloroethylvinylether	ND		ug/L	5.0	1.3	1	394175	02/02/26	02/02/26	ZST
Trichlorofluoromethane	ND		ug/L	1.0	0.1	1	394175	02/02/26	02/02/26	ZST
Acetone	ND		ug/L	14	14	1	394175	02/02/26	02/02/26	ZST
Freon 113	ND		ug/L	2.0	0.1	1	394175	02/02/26	02/02/26	ZST
1,1-Dichloroethene	ND		ug/L	0.5	0.1	1	394175	02/02/26	02/02/26	ZST
Methylene Chloride	ND		ug/L	10	0.2	1	394175	02/02/26	02/02/26	ZST
Carbon Disulfide	ND		ug/L	1.0	0.1	1	394175	02/02/26	02/02/26	ZST
MTBE	ND		ug/L	0.5	0.1	1	394175	02/02/26	02/02/26	ZST
trans-1,2-Dichloroethene	ND		ug/L	0.5	0.1	1	394175	02/02/26	02/02/26	ZST
1,1-Dichloroethane	ND		ug/L	0.5	0.09	1	394175	02/02/26	02/02/26	ZST
2-Butanone	ND		ug/L	10	1.3	1	394175	02/02/26	02/02/26	ZST
cis-1,2-Dichloroethene	ND		ug/L	0.5	0.1	1	394175	02/02/26	02/02/26	ZST
2,2-Dichloropropane	ND		ug/L	0.5	0.2	1	394175	02/02/26	02/02/26	ZST
Chloroform	ND		ug/L	0.5	0.08	1	394175	02/02/26	02/02/26	ZST
Bromochloromethane	ND		ug/L	0.5	0.1	1	394175	02/02/26	02/02/26	ZST
1,1,1-Trichloroethane	ND		ug/L	0.5	0.1	1	394175	02/02/26	02/02/26	ZST
1,1-Dichloropropene	ND		ug/L	0.5	0.1	1	394175	02/02/26	02/02/26	ZST
Carbon Tetrachloride	ND		ug/L	0.5	0.1	1	394175	02/02/26	02/02/26	ZST
1,2-Dichloroethane	ND		ug/L	0.5	0.2	1	394175	02/02/26	02/02/26	ZST
Benzene	ND		ug/L	0.5	0.1	1	394175	02/02/26	02/02/26	ZST
Trichloroethene	ND		ug/L	0.5	0.1	1	394175	02/02/26	02/02/26	ZST
1,2-Dichloropropane	ND		ug/L	0.5	0.09	1	394175	02/02/26	02/02/26	ZST
Bromodichloromethane	ND		ug/L	0.5	0.07	1	394175	02/02/26	02/02/26	ZST
Dibromomethane	ND		ug/L	0.5	0.1	1	394175	02/02/26	02/02/26	ZST
4-Methyl-2-Pentanone	ND		ug/L	10	1.0	1	394175	02/02/26	02/02/26	ZST
cis-1,3-Dichloropropene	ND		ug/L	0.5	0.1	1	394175	02/02/26	02/02/26	ZST
Toluene	ND		ug/L	0.5	0.1	1	394175	02/02/26	02/02/26	ZST
trans-1,3-Dichloropropene	ND		ug/L	0.5	0.09	1	394175	02/02/26	02/02/26	ZST
1,1,2-Trichloroethane	ND		ug/L	0.5	0.1	1	394175	02/02/26	02/02/26	ZST
2-Hexanone	ND		ug/L	10	1.3	1	394175	02/02/26	02/02/26	ZST
1,3-Dichloropropane	ND		ug/L	0.5	0.07	1	394175	02/02/26	02/02/26	ZST
Tetrachloroethene	ND		ug/L	0.5	0.2	1	394175	02/02/26	02/02/26	ZST
Dibromochloromethane	ND		ug/L	0.5	0.1	1	394175	02/02/26	02/02/26	ZST
1,2-Dibromoethane	ND		ug/L	0.5	0.1	1	394175	02/02/26	02/02/26	ZST
Chlorobenzene	ND		ug/L	0.5	0.1	1	394175	02/02/26	02/02/26	ZST
1,1,1,2-Tetrachloroethane	ND		ug/L	0.5	0.07	1	394175	02/02/26	02/02/26	ZST
Ethylbenzene	ND		ug/L	0.5	0.1	1	394175	02/02/26	02/02/26	ZST
m,p-Xylenes	ND		ug/L	0.5	0.2	1	394175	02/02/26	02/02/26	ZST

Analysis Results for 552027

552027-003 Analyte	Result	Qual	Units	RL	MDL	DF	Batch	Prepared	Analyzed	Chemist
o-Xylene	ND		ug/L	0.5	0.1	1	394175	02/02/26	02/02/26	ZST
Styrene	ND		ug/L	0.5	0.1	1	394175	02/02/26	02/02/26	ZST
Bromoform	ND		ug/L	1.0	0.06	1	394175	02/02/26	02/02/26	ZST
Isopropylbenzene	ND		ug/L	0.5	0.1	1	394175	02/02/26	02/02/26	ZST
1,1,2,2-Tetrachloroethane	ND		ug/L	0.5	0.1	1	394175	02/02/26	02/02/26	ZST
1,2,3-Trichloropropane	ND		ug/L	0.5	0.3	1	394175	02/02/26	02/02/26	ZST
Propylbenzene	ND		ug/L	0.5	0.1	1	394175	02/02/26	02/02/26	ZST
Bromobenzene	ND		ug/L	0.5	0.1	1	394175	02/02/26	02/02/26	ZST
1,3,5-Trimethylbenzene	ND		ug/L	0.5	0.1	1	394175	02/02/26	02/02/26	ZST
2-Chlorotoluene	ND		ug/L	0.5	0.1	1	394175	02/02/26	02/02/26	ZST
4-Chlorotoluene	ND		ug/L	0.5	0.2	1	394175	02/02/26	02/02/26	ZST
tert-Butylbenzene	ND		ug/L	0.5	0.1	1	394175	02/02/26	02/02/26	ZST
1,2,4-Trimethylbenzene	ND		ug/L	0.5	0.1	1	394175	02/02/26	02/02/26	ZST
sec-Butylbenzene	ND		ug/L	0.5	0.2	1	394175	02/02/26	02/02/26	ZST
para-Isopropyl Toluene	ND		ug/L	0.5	0.2	1	394175	02/02/26	02/02/26	ZST
1,3-Dichlorobenzene	ND		ug/L	0.5	0.1	1	394175	02/02/26	02/02/26	ZST
1,4-Dichlorobenzene	ND		ug/L	0.5	0.2	1	394175	02/02/26	02/02/26	ZST
n-Butylbenzene	ND		ug/L	0.5	0.1	1	394175	02/02/26	02/02/26	ZST
1,2-Dichlorobenzene	ND		ug/L	0.5	0.1	1	394175	02/02/26	02/02/26	ZST
1,2-Dibromo-3-Chloropropane	ND		ug/L	2.0	0.6	1	394175	02/02/26	02/02/26	ZST
1,2,4-Trichlorobenzene	ND		ug/L	0.5	0.3	1	394175	02/02/26	02/02/26	ZST
Hexachlorobutadiene	ND		ug/L	2.0	0.3	1	394175	02/02/26	02/02/26	ZST
Naphthalene	ND		ug/L	2.0	0.6	1	394175	02/02/26	02/02/26	ZST
1,2,3-Trichlorobenzene	ND		ug/L	0.5	0.3	1	394175	02/02/26	02/02/26	ZST
Isopropyl Ether (DIPE)	ND		ug/L	0.5	0.1	1	394175	02/02/26	02/02/26	ZST
Ethyl tert-Butyl Ether (ETBE)	ND		ug/L	0.5	0.1	1	394175	02/02/26	02/02/26	ZST
tert-Butyl Alcohol (TBA)	ND		ug/L	10	2.5	1	394175	02/02/26	02/02/26	ZST
Methyl tert-Amyl Ether (TAME)	ND		ug/L	0.5	0.1	1	394175	02/02/26	02/02/26	ZST
Xylene (total)	ND		ug/L	0.5		1	394175	02/02/26	02/02/26	ZST
Total Trihalomethanes (THMs)	ND		ug/L	0.5		1	394175	02/02/26	02/02/26	ZST
Surrogates				Limits						
Dibromofluoromethane	100%		%REC	70-130		1	394175	02/02/26	02/02/26	ZST
1,2-Dichloroethane-d4	101%		%REC	70-130		1	394175	02/02/26	02/02/26	ZST
Toluene-d8	101%		%REC	70-130		1	394175	02/02/26	02/02/26	ZST
Bromofluorobenzene	94%		%REC	70-130		1	394175	02/02/26	02/02/26	ZST

E Response exceeds instrument's linear range
 J Estimated value
 ND Not Detected

Batch QC

Type: Lab Control Sample	Lab ID: QC1336482	Batch: 394175
Matrix: Water	Method: EPA 624.1	Prep Method: EPA 624.1

QC1336482 Analyte	Result	Spiked	Units	Recovery	Qual	Limits
Acrolein	87.03	50.00	ug/L	174%	b,*	60-140
Acrylonitrile	56.39	50.00	ug/L	113%		60-140
2-Chloroethylvinylether	40.75	50.00	ug/L	82%		30-162
Surrogates						
Dibromofluoromethane	50.70	50.00	ug/L	101%		70-130
1,2-Dichloroethane-d4	52.94	50.00	ug/L	106%		70-130
Toluene-d8	50.88	50.00	ug/L	102%		70-130
Bromofluorobenzene	56.61	50.00	ug/L	113%		70-130

Batch QC

Type: Lab Control Sample	Lab ID: QC1336483	Batch: 394175
Matrix: Water	Method: EPA 624.1	Prep Method: EPA 624.1

QC1336483 Analyte	Result	Spiked	Units	Recovery	Qual	Limits
Freon 12	36.53	50.00	ug/L	73%		55-146
Chloromethane	39.77	50.00	ug/L	80%		59-139
Vinyl Chloride	42.45	50.00	ug/L	85%		70-131
Bromomethane	33.45	50.00	ug/L	67%	b	50-156
Chloroethane	41.79	50.00	ug/L	84%		65-139
Trichlorofluoromethane	44.79	50.00	ug/L	90%		72-138
Acetone	100.9	125.0	ug/L	81%		54-144
Freon 113	44.84	50.00	ug/L	90%		69-130
1,1-Dichloroethene	45.16	50.00	ug/L	90%		69-128
Methylene Chloride	45.09	50.00	ug/L	90%		67-126
Carbon Disulfide	41.79	50.00	ug/L	84%		67-127
MTBE	44.14	50.00	ug/L	88%		66-125
trans-1,2-Dichloroethene	46.14	50.00	ug/L	92%		67-128
1,1-Dichloroethane	45.21	50.00	ug/L	90%		68-126
2-Butanone	107.8	125.0	ug/L	86%		58-139
cis-1,2-Dichloroethene	45.68	50.00	ug/L	91%		68-127
2,2-Dichloropropane	48.61	50.00	ug/L	97%		66-129
Chloroform	46.69	50.00	ug/L	93%		73-125
Bromochloromethane	48.92	50.00	ug/L	98%		73-129
1,1,1-Trichloroethane	48.13	50.00	ug/L	96%		72-126
1,1-Dichloropropene	47.23	50.00	ug/L	94%		74-125
Carbon Tetrachloride	49.52	50.00	ug/L	99%		70-130
1,2-Dichloroethane	45.87	50.00	ug/L	92%		71-121
Benzene	45.76	50.00	ug/L	92%		76-121
Trichloroethene	48.84	50.00	ug/L	98%		76-124
1,2-Dichloropropane	47.86	50.00	ug/L	96%		72-123
Bromodichloromethane	49.33	50.00	ug/L	99%		77-123
Dibromomethane	48.75	50.00	ug/L	98%		75-125
4-Methyl-2-Pentanone	118.5	125.0	ug/L	95%		61-135
cis-1,3-Dichloropropene	49.68	50.00	ug/L	99%		72-126
Toluene	47.14	50.00	ug/L	94%		76-120
trans-1,3-Dichloropropene	49.83	50.00	ug/L	100%		72-125
1,1,2-Trichloroethane	50.42	50.00	ug/L	101%		78-120
2-Hexanone	114.6	125.0	ug/L	92%		59-135
1,3-Dichloropropane	48.44	50.00	ug/L	97%		78-120
Tetrachloroethene	48.35	50.00	ug/L	97%		75-125
Dibromochloromethane	50.80	50.00	ug/L	102%		77-128
1,2-Dibromoethane	50.98	50.00	ug/L	102%		79-122
Chlorobenzene	47.01	50.00	ug/L	94%		78-120
1,1,1,2-Tetrachloroethane	48.42	50.00	ug/L	97%		77-127
Ethylbenzene	48.07	50.00	ug/L	96%		78-122
m,p-Xylenes	94.53	100.0	ug/L	95%		77-125
o-Xylene	48.22	50.00	ug/L	96%		77-123
Styrene	48.77	50.00	ug/L	98%		79-125
Bromoform	49.53	50.00	ug/L	99%		73-129
Isopropylbenzene	50.04	50.00	ug/L	100%		75-128
1,1,2,2-Tetrachloroethane	49.58	50.00	ug/L	99%		70-127

Batch QC

QC1336483 Analyte	Result	Spiked	Units	Recovery	Qual	Limits
1,2,3-Trichloropropane	48.61	50.00	ug/L	97%		71-124
Propylbenzene	48.94	50.00	ug/L	98%		74-127
Bromobenzene	48.58	50.00	ug/L	97%		77-120
1,3,5-Trimethylbenzene	49.41	50.00	ug/L	99%		77-128
2-Chlorotoluene	48.65	50.00	ug/L	97%		74-124
4-Chlorotoluene	46.58	50.00	ug/L	93%		74-126
tert-Butylbenzene	49.91	50.00	ug/L	100%		76-127
1,2,4-Trimethylbenzene	49.98	50.00	ug/L	100%		76-127
sec-Butylbenzene	49.75	50.00	ug/L	99%		76-129
para-Isopropyl Toluene	49.71	50.00	ug/L	99%		76-129
1,3-Dichlorobenzene	47.52	50.00	ug/L	95%		78-122
1,4-Dichlorobenzene	47.15	50.00	ug/L	94%		77-120
n-Butylbenzene	49.08	50.00	ug/L	98%		74-131
1,2-Dichlorobenzene	47.71	50.00	ug/L	95%		78-121
1,2-Dibromo-3-Chloropropane	48.62	50.00	ug/L	97%		69-127
1,2,4-Trichlorobenzene	47.54	50.00	ug/L	95%		72-131
Hexachlorobutadiene	48.31	50.00	ug/L	97%		67-140
Naphthalene	46.99	50.00	ug/L	94%		69-129
1,2,3-Trichlorobenzene	47.95	50.00	ug/L	96%		74-130
Isopropyl Ether (DIPE)	44.60	50.00	ug/L	89%		59-134
Ethyl tert-Butyl Ether (ETBE)	44.67	50.00	ug/L	89%		64-127
tert-Butyl Alcohol (TBA)	219.6	250.0	ug/L	88%		48-136
Methyl tert-Amyl Ether (TAME)	45.40	50.00	ug/L	91%		65-126
Surrogates						
Dibromofluoromethane	50.41	50.00	ug/L	101%		70-130
1,2-Dichloroethane-d4	50.05	50.00	ug/L	100%		70-130
Toluene-d8	51.30	50.00	ug/L	103%		70-130
Bromofluorobenzene	48.21	50.00	ug/L	96%		70-130

Batch QC

Type: Lab Control Sample Duplicate	Lab ID: QC1336484	Batch: 394175
Matrix: Water	Method: EPA 624.1	Prep Method: EPA 624.1

QC1336484 Analyte	Result	Spiked	Units	Recovery	Qual	Limits	RPD	RPD Lim
Freon 12	40.32	50.00	ug/L	81%		55-146	10	36
Chloromethane	45.00	50.00	ug/L	90%		59-139	12	25
Vinyl Chloride	46.19	50.00	ug/L	92%		70-131	8	27
Bromomethane	40.00	50.00	ug/L	80%	b	50-156	18	29
Chloroethane	45.64	50.00	ug/L	91%		65-139	9	27
Trichlorofluoromethane	49.63	50.00	ug/L	99%		72-138	10	23
Acetone	112.1	125.0	ug/L	90%		54-144	11	26
Freon 113	49.21	50.00	ug/L	98%		69-130	9	26
1,1-Dichloroethene	48.67	50.00	ug/L	97%		69-128	7	23
Methylene Chloride	48.72	50.00	ug/L	97%		67-126	8	23
Carbon Disulfide	45.30	50.00	ug/L	91%		67-127	8	24
MTBE	48.55	50.00	ug/L	97%		66-125	10	22
trans-1,2-Dichloroethene	49.82	50.00	ug/L	100%		67-128	8	23
1,1-Dichloroethane	49.50	50.00	ug/L	99%		68-126	9	22
2-Butanone	111.7	125.0	ug/L	89%		58-139	3	23
cis-1,2-Dichloroethene	50.48	50.00	ug/L	101%		68-127	10	22
2,2-Dichloropropane	53.21	50.00	ug/L	106%		66-129	9	23
Chloroform	51.82	50.00	ug/L	104%		73-125	10	21
Bromochloromethane	54.68	50.00	ug/L	109%		73-129	11	22
1,1,1-Trichloroethane	52.96	50.00	ug/L	106%		72-126	10	22
1,1-Dichloropropene	51.66	50.00	ug/L	103%		74-125	9	23
Carbon Tetrachloride	53.96	50.00	ug/L	108%		70-130	9	23
1,2-Dichloroethane	51.13	50.00	ug/L	102%		71-121	11	20
Benzene	51.27	50.00	ug/L	103%		76-121	11	21
Trichloroethene	53.46	50.00	ug/L	107%		76-124	9	22
1,2-Dichloropropane	53.09	50.00	ug/L	106%		72-123	10	21
Bromodichloromethane	54.82	50.00	ug/L	110%		77-123	11	21
Dibromomethane	54.49	50.00	ug/L	109%		75-125	11	20
4-Methyl-2-Pentanone	125.8	125.0	ug/L	101%		61-135	6	21
cis-1,3-Dichloropropene	55.93	50.00	ug/L	112%		72-126	12	21
Toluene	52.92	50.00	ug/L	106%		76-120	12	21
trans-1,3-Dichloropropene	54.31	50.00	ug/L	109%		72-125	9	20
1,1,2-Trichloroethane	55.00	50.00	ug/L	110%		78-120	9	20
2-Hexanone	127.3	125.0	ug/L	102%		59-135	10	22
1,3-Dichloropropane	53.87	50.00	ug/L	108%		78-120	11	20
Tetrachloroethene	53.50	50.00	ug/L	107%		75-125	10	22
Dibromochloromethane	56.65	50.00	ug/L	113%		77-128	11	20
1,2-Dibromoethane	56.69	50.00	ug/L	113%		79-122	11	20
Chlorobenzene	52.45	50.00	ug/L	105%		78-120	11	20
1,1,1,2-Tetrachloroethane	55.54	50.00	ug/L	111%		77-127	14	20
Ethylbenzene	53.86	50.00	ug/L	108%		78-122	11	20
m,p-Xylenes	103.7	100.0	ug/L	104%		77-125	9	20
o-Xylene	53.88	50.00	ug/L	108%		77-123	11	20
Styrene	53.37	50.00	ug/L	107%		79-125	9	20
Bromoform	54.80	50.00	ug/L	110%		73-129	10	20
Isopropylbenzene	58.47	50.00	ug/L	117%		75-128	16	23

Batch QC

QC1336484 Analyte	Result	Spiked	Units	Recovery	Qual	Limits	RPD	RPD Lim
1,1,2,2-Tetrachloroethane	56.77	50.00	ug/L	114%		70-127	14	21
1,2,3-Trichloropropane	55.60	50.00	ug/L	111%		71-124	13	21
Propylbenzene	57.25	50.00	ug/L	114%		74-127	16	23
Bromobenzene	56.42	50.00	ug/L	113%		77-120	15	21
1,3,5-Trimethylbenzene	57.95	50.00	ug/L	116%		77-128	16	22
2-Chlorotoluene	55.92	50.00	ug/L	112%		74-124	14	22
4-Chlorotoluene	54.45	50.00	ug/L	109%		74-126	16	22
tert-Butylbenzene	57.12	50.00	ug/L	114%		76-127	13	22
1,2,4-Trimethylbenzene	57.48	50.00	ug/L	115%		76-127	14	21
sec-Butylbenzene	57.92	50.00	ug/L	116%		76-129	15	22
para-Isopropyl Toluene	58.28	50.00	ug/L	117%		76-129	16	22
1,3-Dichlorobenzene	55.44	50.00	ug/L	111%		78-122	15	20
1,4-Dichlorobenzene	55.02	50.00	ug/L	110%		77-120	15	20
n-Butylbenzene	57.98	50.00	ug/L	116%		74-131	17	23
1,2-Dichlorobenzene	55.91	50.00	ug/L	112%		78-121	16	20
1,2-Dibromo-3-Chloropropane	56.23	50.00	ug/L	112%		69-127	15	22
1,2,4-Trichlorobenzene	56.40	50.00	ug/L	113%		72-131	17	22
Hexachlorobutadiene	57.03	50.00	ug/L	114%		67-140	17	24
Naphthalene	55.88	50.00	ug/L	112%		69-129	17	22
1,2,3-Trichlorobenzene	57.68	50.00	ug/L	115%		74-130	18	21
Isopropyl Ether (DIPE)	48.61	50.00	ug/L	97%		59-134	9	26
Ethyl tert-Butyl Ether (ETBE)	48.80	50.00	ug/L	98%		64-127	9	22
tert-Butyl Alcohol (TBA)	223.7	250.0	ug/L	89%		48-136	2	28
Methyl tert-Amyl Ether (TAME)	50.66	50.00	ug/L	101%		65-126	11	21
Surrogates								
Dibromofluoromethane	51.13	50.00	ug/L	102%		70-130		
1,2-Dichloroethane-d4	50.85	50.00	ug/L	102%		70-130		
Toluene-d8	51.99	50.00	ug/L	104%		70-130		
Bromofluorobenzene	50.38	50.00	ug/L	101%		70-130		

Batch QC

Type: Blank	Lab ID: QC1336487	Batch: 394175
Matrix: Water	Method: EPA 624.1	Prep Method: EPA 624.1

QC1336487 Analyte	Result	Qual	Units	RL	MDL	Prepared	Analyzed
Acrolein	ND		ug/L	5.0	2.6	02/02/26	02/02/26
Acrylonitrile	ND		ug/L	2.0	0.7	02/02/26	02/02/26
Freon 12	ND		ug/L	1.0	0.2	02/02/26	02/02/26
Chloromethane	ND		ug/L	1.0	0.09	02/02/26	02/02/26
Vinyl Chloride	ND		ug/L	0.5	0.1	02/02/26	02/02/26
Bromomethane	ND		ug/L	1.0	0.1	02/02/26	02/02/26
Chloroethane	ND		ug/L	1.0	0.1	02/02/26	02/02/26
2-Chloroethylvinylether	ND		ug/L	5.0	1.3	02/02/26	02/02/26
Trichlorofluoromethane	ND		ug/L	1.0	0.1	02/02/26	02/02/26
Acetone	ND		ug/L	14	14	02/02/26	02/02/26
Freon 113	ND		ug/L	2.0	0.1	02/02/26	02/02/26
1,1-Dichloroethene	ND		ug/L	0.5	0.1	02/02/26	02/02/26
Methylene Chloride	ND		ug/L	10	0.2	02/02/26	02/02/26
Carbon Disulfide	ND		ug/L	1.0	0.1	02/02/26	02/02/26
MTBE	ND		ug/L	0.5	0.1	02/02/26	02/02/26
trans-1,2-Dichloroethene	ND		ug/L	0.5	0.1	02/02/26	02/02/26
1,1-Dichloroethane	ND		ug/L	0.5	0.09	02/02/26	02/02/26
2-Butanone	ND		ug/L	10	1.3	02/02/26	02/02/26
cis-1,2-Dichloroethene	ND		ug/L	0.5	0.1	02/02/26	02/02/26
2,2-Dichloropropane	ND		ug/L	0.5	0.2	02/02/26	02/02/26
Chloroform	ND		ug/L	0.5	0.08	02/02/26	02/02/26
Bromochloromethane	ND		ug/L	0.5	0.1	02/02/26	02/02/26
1,1,1-Trichloroethane	ND		ug/L	0.5	0.1	02/02/26	02/02/26
1,1-Dichloropropene	ND		ug/L	0.5	0.1	02/02/26	02/02/26
Carbon Tetrachloride	ND		ug/L	0.5	0.1	02/02/26	02/02/26
1,2-Dichloroethane	ND		ug/L	0.5	0.2	02/02/26	02/02/26
Benzene	ND		ug/L	0.5	0.1	02/02/26	02/02/26
Trichloroethene	ND		ug/L	0.5	0.1	02/02/26	02/02/26
1,2-Dichloropropane	ND		ug/L	0.5	0.09	02/02/26	02/02/26
Bromodichloromethane	ND		ug/L	0.5	0.07	02/02/26	02/02/26
Dibromomethane	ND		ug/L	0.5	0.1	02/02/26	02/02/26
4-Methyl-2-Pentanone	ND		ug/L	10	1.0	02/02/26	02/02/26
cis-1,3-Dichloropropene	ND		ug/L	0.5	0.1	02/02/26	02/02/26
Toluene	ND		ug/L	0.5	0.1	02/02/26	02/02/26
trans-1,3-Dichloropropene	ND		ug/L	0.5	0.09	02/02/26	02/02/26
1,1,2-Trichloroethane	ND		ug/L	0.5	0.1	02/02/26	02/02/26
2-Hexanone	ND		ug/L	10	1.3	02/02/26	02/02/26
1,3-Dichloropropane	ND		ug/L	0.5	0.07	02/02/26	02/02/26
Tetrachloroethene	ND		ug/L	0.5	0.2	02/02/26	02/02/26
Dibromochloromethane	ND		ug/L	0.5	0.1	02/02/26	02/02/26
1,2-Dibromoethane	ND		ug/L	0.5	0.1	02/02/26	02/02/26
Chlorobenzene	ND		ug/L	0.5	0.1	02/02/26	02/02/26
1,1,1,2-Tetrachloroethane	ND		ug/L	0.5	0.07	02/02/26	02/02/26
Ethylbenzene	ND		ug/L	0.5	0.1	02/02/26	02/02/26
m,p-Xylenes	ND		ug/L	0.5	0.2	02/02/26	02/02/26
o-Xylene	ND		ug/L	0.5	0.1	02/02/26	02/02/26
Styrene	ND		ug/L	0.5	0.1	02/02/26	02/02/26

Batch QC

QC1336487 Analyte	Result	Qual	Units	RL	MDL	Prepared	Analyzed
Bromoform	ND		ug/L	1.0	0.06	02/02/26	02/02/26
Isopropylbenzene	ND		ug/L	0.5	0.1	02/02/26	02/02/26
1,1,2,2-Tetrachloroethane	ND		ug/L	0.5	0.1	02/02/26	02/02/26
1,2,3-Trichloropropane	ND		ug/L	0.5	0.3	02/02/26	02/02/26
Propylbenzene	ND		ug/L	0.5	0.1	02/02/26	02/02/26
Bromobenzene	ND		ug/L	0.5	0.1	02/02/26	02/02/26
1,3,5-Trimethylbenzene	ND		ug/L	0.5	0.1	02/02/26	02/02/26
2-Chlorotoluene	ND		ug/L	0.5	0.1	02/02/26	02/02/26
4-Chlorotoluene	ND		ug/L	0.5	0.2	02/02/26	02/02/26
tert-Butylbenzene	ND		ug/L	0.5	0.1	02/02/26	02/02/26
1,2,4-Trimethylbenzene	ND		ug/L	0.5	0.1	02/02/26	02/02/26
sec-Butylbenzene	ND		ug/L	0.5	0.2	02/02/26	02/02/26
para-Isopropyl Toluene	ND		ug/L	0.5	0.2	02/02/26	02/02/26
1,3-Dichlorobenzene	ND		ug/L	0.5	0.1	02/02/26	02/02/26
1,4-Dichlorobenzene	ND		ug/L	0.5	0.2	02/02/26	02/02/26
n-Butylbenzene	ND		ug/L	0.5	0.1	02/02/26	02/02/26
1,2-Dichlorobenzene	ND		ug/L	0.5	0.1	02/02/26	02/02/26
1,2-Dibromo-3-Chloropropane	ND		ug/L	2.0	0.6	02/02/26	02/02/26
1,2,4-Trichlorobenzene	ND		ug/L	0.5	0.3	02/02/26	02/02/26
Hexachlorobutadiene	ND		ug/L	2.0	0.3	02/02/26	02/02/26
Naphthalene	ND		ug/L	2.0	0.6	02/02/26	02/02/26
1,2,3-Trichlorobenzene	ND		ug/L	0.5	0.3	02/02/26	02/02/26
Isopropyl Ether (DIPE)	ND		ug/L	0.5	0.1	02/02/26	02/02/26
Ethyl tert-Butyl Ether (ETBE)	ND		ug/L	0.5	0.1	02/02/26	02/02/26
tert-Butyl Alcohol (TBA)	ND		ug/L	10	2.5	02/02/26	02/02/26
Methyl tert-Amyl Ether (TAME)	ND		ug/L	0.5	0.1	02/02/26	02/02/26
Xylene (total)	ND		ug/L	0.5		02/02/26	02/02/26
Total Trihalomethanes (THMs)	ND		ug/L	0.5		02/02/26	02/02/26
Surrogates				Limits			
Dibromofluoromethane	100%		%REC	70-130		02/02/26	02/02/26
1,2-Dichloroethane-d4	101%		%REC	70-130		02/02/26	02/02/26
Toluene-d8	101%		%REC	70-130		02/02/26	02/02/26
Bromofluorobenzene	96%		%REC	70-130		02/02/26	02/02/26

Batch QC

Type: Matrix Spike	Lab ID: QC1336523	Batch: 394175
Matrix (Source ID): Water (551901-009)	Method: EPA 624.1	Prep Method: EPA 624.1

QC1336523 Analyte	Result	Source Sample Result	Spiked	Units	Recovery	Qual	Limits	DF
Freon 12	93.35	ND	100.0	ug/L	93%		57-133	5
Chloromethane	103.7	ND	100.0	ug/L	104%		58-137	5
Vinyl Chloride	102.1	2.243	100.0	ug/L	100%		64-128	5
Bromomethane	76.34	ND	100.0	ug/L	76%	b	48-154	5
Chloroethane	97.65	ND	100.0	ug/L	98%		64-146	5
Trichlorofluoromethane	101.9	ND	100.0	ug/L	102%		68-145	5
Acetone	244.3	ND	250.0	ug/L	98%		38-163	5
Freon 113	100.1	ND	100.0	ug/L	100%		64-133	5
1,1-Dichloroethene	317.6	233.6	100.0	ug/L	84%		62-131	5
Methylene Chloride	96.58	ND	100.0	ug/L	97%		64-128	5
Carbon Disulfide	89.46	ND	100.0	ug/L	89%		62-127	5
MTBE	92.22	ND	100.0	ug/L	92%		61-124	5
trans-1,2-Dichloroethene	98.98	ND	100.0	ug/L	99%		63-130	5
1,1-Dichloroethane	97.64	2.632	100.0	ug/L	95%		63-126	5
2-Butanone	221.1	ND	250.0	ug/L	88%		48-157	5
cis-1,2-Dichloroethene	103.9	3.550	100.0	ug/L	100%		61-130	5
2,2-Dichloropropane	99.16	ND	100.0	ug/L	99%		59-127	5
Chloroform	101.1	ND	100.0	ug/L	101%		67-127	5
Bromochloromethane	104.3	ND	100.0	ug/L	104%		69-132	5
1,1,1-Trichloroethane	101.3	ND	100.0	ug/L	101%		65-126	5
1,1-Dichloropropene	96.00	ND	100.0	ug/L	96%		68-127	5
Carbon Tetrachloride	105.5	ND	100.0	ug/L	105%		70-140	5
1,2-Dichloroethane	101.1	ND	100.0	ug/L	101%		68-122	5
Benzene	97.62	ND	100.0	ug/L	98%		70-123	5
Trichloroethene	102.0	ND	100.0	ug/L	102%		65-131	5
1,2-Dichloropropane	99.83	ND	100.0	ug/L	100%		69-126	5
Bromodichloromethane	100.6	ND	100.0	ug/L	101%		71-125	5
Dibromomethane	97.89	ND	100.0	ug/L	98%		71-128	5
4-Methyl-2-Pentanone	215.2	ND	250.0	ug/L	86%		60-135	5
cis-1,3-Dichloropropene	97.98	ND	100.0	ug/L	98%		68-129	5
Toluene	96.51	ND	100.0	ug/L	97%		69-120	5
trans-1,3-Dichloropropene	104.3	ND	100.0	ug/L	104%		67-128	5
1,1,2-Trichloroethane	101.6	ND	100.0	ug/L	102%		73-125	5
2-Hexanone	213.4	ND	250.0	ug/L	85%		54-149	5
1,3-Dichloropropane	98.22	ND	100.0	ug/L	98%		74-125	5
Tetrachloroethene	101.4	ND	100.0	ug/L	101%		65-132	5
Dibromochloromethane	96.99	ND	100.0	ug/L	97%		73-132	5
1,2-Dibromoethane	99.56	ND	100.0	ug/L	100%		74-126	5
Chlorobenzene	98.66	ND	100.0	ug/L	99%		72-121	5
1,1,1,2-Tetrachloroethane	98.83	ND	100.0	ug/L	99%		73-132	5
Ethylbenzene	97.48	ND	100.0	ug/L	97%		70-126	5
m,p-Xylenes	190.3	ND	200.0	ug/L	95%		69-128	5
o-Xylene	98.03	ND	100.0	ug/L	98%		70-128	5
Styrene	94.93	ND	100.0	ug/L	95%		54-136	5
Bromoform	90.65	ND	100.0	ug/L	91%		69-131	5

Batch QC

QC1336523 Analyte	Result	Source Sample Result	Spiked	Units	Recovery	Qual	Limits	DF
Isopropylbenzene	94.44	ND	100.0	ug/L	94%		69-131	5
1,1,2,2-Tetrachloroethane	102.4	ND	100.0	ug/L	102%		67-132	5
1,2,3-Trichloropropane	97.91	ND	100.0	ug/L	98%		69-128	5
Propylbenzene	103.0	ND	100.0	ug/L	103%		69-133	5
Bromobenzene	100.2	ND	100.0	ug/L	100%		73-124	5
1,3,5-Trimethylbenzene	102.8	ND	100.0	ug/L	103%		71-134	5
2-Chlorotoluene	103.5	ND	100.0	ug/L	103%		71-130	5
4-Chlorotoluene	99.69	ND	100.0	ug/L	100%		70-130	5
tert-Butylbenzene	102.9	ND	100.0	ug/L	103%		70-132	5
1,2,4-Trimethylbenzene	101.9	ND	100.0	ug/L	102%		70-131	5
sec-Butylbenzene	104.6	ND	100.0	ug/L	105%		70-135	5
para-Isopropyl Toluene	101.5	ND	100.0	ug/L	101%		69-135	5
1,3-Dichlorobenzene	101.2	ND	100.0	ug/L	101%		74-128	5
1,4-Dichlorobenzene	98.27	ND	100.0	ug/L	98%		71-122	5
n-Butylbenzene	101.2	ND	100.0	ug/L	101%		68-137	5
1,2-Dichlorobenzene	102.6	ND	100.0	ug/L	103%		74-126	5
1,2-Dibromo-3-Chloropropane	92.11	ND	100.0	ug/L	92%		65-127	5
1,2,4-Trichlorobenzene	95.57	ND	100.0	ug/L	96%		67-136	5
Hexachlorobutadiene	106.9	ND	100.0	ug/L	107%		66-155	5
Naphthalene	86.90	ND	100.0	ug/L	87%		66-133	5
1,2,3-Trichlorobenzene	96.91	ND	100.0	ug/L	97%		68-134	5
Isopropyl Ether (DIPE)	182.5	ND	200.0	ug/L	91%		55-131	5
Ethyl tert-Butyl Ether (ETBE)	93.32	ND	100.0	ug/L	93%		58-127	5
tert-Butyl Alcohol (TBA)	443.5	ND	500.0	ug/L	89%		44-125	5
Methyl tert-Amyl Ether (TAME)	93.84	ND	100.0	ug/L	94%		62-123	5
Surrogates								
Dibromofluoromethane	254.7		250.0	ug/L	102%		70-130	5
1,2-Dichloroethane-d4	258.6		250.0	ug/L	103%		70-130	5
Toluene-d8	252.8		250.0	ug/L	101%		70-130	5
Bromofluorobenzene	242.0		250.0	ug/L	97%		70-130	5

Batch QC

Type: Matrix Spike Duplicate	Lab ID: QC1336524	Batch: 394175
Matrix (Source ID): Water (551901-009)	Method: EPA 624.1	Prep Method: EPA 624.1

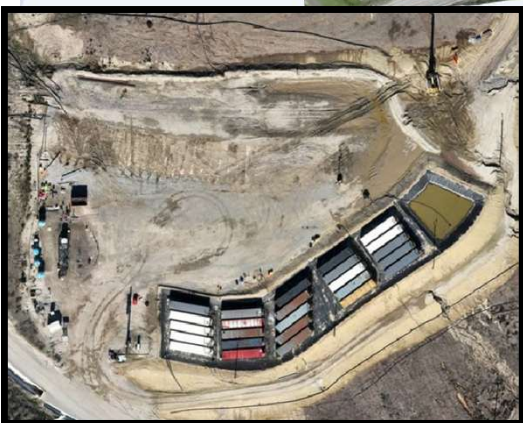
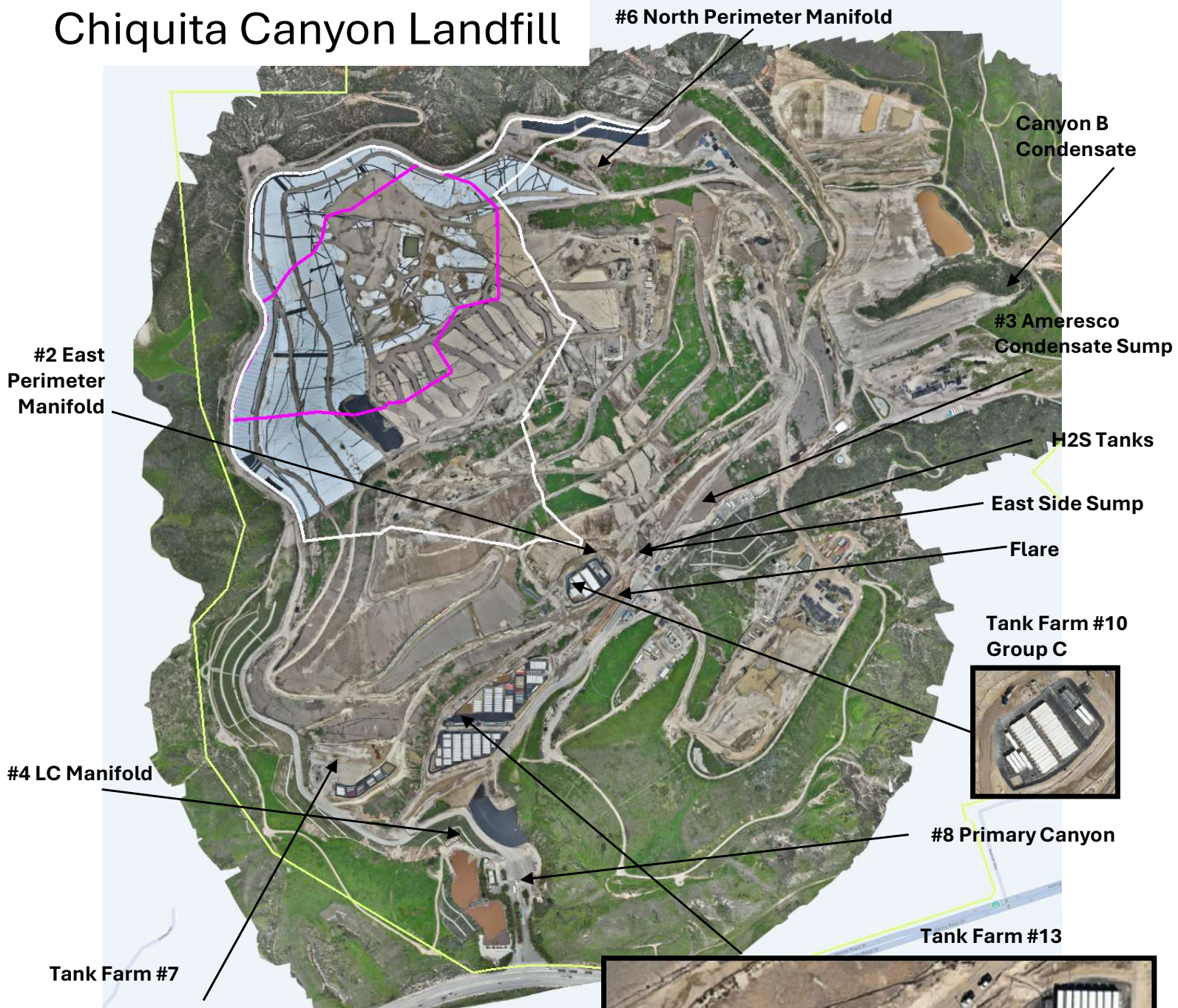
QC1336524 Analyte	Result	Source Sample Result	Spiked	Units	Recovery	Qual	Limits	RPD	RPD Lim	DF
Freon 12	85.77	ND	100.0	ug/L	86%		57-133	8	28	5
Chloromethane	95.20	ND	100.0	ug/L	95%		58-137	9	30	5
Vinyl Chloride	95.84	2.243	100.0	ug/L	94%		64-128	6	29	5
Bromomethane	72.06	ND	100.0	ug/L	72%	b	48-154	6	30	5
Chloroethane	91.56	ND	100.0	ug/L	92%		64-146	6	31	5
Trichlorofluoromethane	95.47	ND	100.0	ug/L	95%		68-145	7	27	5
Acetone	252.4	ND	250.0	ug/L	101%		38-163	3	32	5
Freon 113	89.84	ND	100.0	ug/L	90%		64-133	11	32	5
1,1-Dichloroethene	315.9	233.6	100.0	ug/L	82%		62-131	1	31	5
Methylene Chloride	91.60	ND	100.0	ug/L	92%		64-128	5	30	5
Carbon Disulfide	83.05	ND	100.0	ug/L	83%		62-127	7	31	5
MTBE	86.52	ND	100.0	ug/L	87%		61-124	6	30	5
trans-1,2-Dichloroethene	90.82	ND	100.0	ug/L	91%		63-130	9	30	5
1,1-Dichloroethane	92.57	2.632	100.0	ug/L	90%		63-126	5	30	5
2-Butanone	212.4	ND	250.0	ug/L	85%		48-157	4	30	5
cis-1,2-Dichloroethene	96.84	3.550	100.0	ug/L	93%		61-130	7	30	5
2,2-Dichloropropane	89.43	ND	100.0	ug/L	89%		59-127	10	32	5
Chloroform	98.15	ND	100.0	ug/L	98%		67-127	3	30	5
Bromochloromethane	98.50	ND	100.0	ug/L	98%		69-132	6	31	5
1,1,1-Trichloroethane	94.19	ND	100.0	ug/L	94%		65-126	7	31	5
1,1-Dichloropropene	91.32	ND	100.0	ug/L	91%		68-127	5	30	5
Carbon Tetrachloride	96.01	ND	100.0	ug/L	96%		70-140	9	32	5
1,2-Dichloroethane	95.67	ND	100.0	ug/L	96%		68-122	5	29	5
Benzene	91.71	ND	100.0	ug/L	92%		70-123	6	31	5
Trichloroethene	100.4	ND	100.0	ug/L	100%		65-131	2	31	5
1,2-Dichloropropane	96.37	ND	100.0	ug/L	96%		69-126	4	30	5
Bromodichloromethane	99.60	ND	100.0	ug/L	100%		71-125	1	30	5
Dibromomethane	99.38	ND	100.0	ug/L	99%		71-128	2	30	5
4-Methyl-2-Pentanone	215.5	ND	250.0	ug/L	86%		60-135	0	30	5
cis-1,3-Dichloropropene	98.91	ND	100.0	ug/L	99%		68-129	1	30	5
Toluene	95.44	ND	100.0	ug/L	95%		69-120	1	29	5
trans-1,3-Dichloropropene	104.9	ND	100.0	ug/L	105%		67-128	1	29	5
1,1,2-Trichloroethane	102.3	ND	100.0	ug/L	102%		73-125	1	29	5
2-Hexanone	215.5	ND	250.0	ug/L	86%		54-149	1	31	5
1,3-Dichloropropane	97.85	ND	100.0	ug/L	98%		74-125	0	29	5
Tetrachloroethene	98.11	ND	100.0	ug/L	98%		65-132	3	31	5
Dibromochloromethane	98.87	ND	100.0	ug/L	99%		73-132	2	29	5
1,2-Dibromoethane	100.4	ND	100.0	ug/L	100%		74-126	1	29	5
Chlorobenzene	98.65	ND	100.0	ug/L	99%		72-121	0	29	5
1,1,1,2-Tetrachloroethane	98.31	ND	100.0	ug/L	98%		73-132	1	29	5
Ethylbenzene	96.64	ND	100.0	ug/L	97%		70-126	1	29	5
m,p-Xylenes	190.0	ND	200.0	ug/L	95%		69-128	0	29	5
o-Xylene	96.40	ND	100.0	ug/L	96%		70-128	2	29	5
Styrene	93.73	ND	100.0	ug/L	94%		54-136	1	44	5
Bromoform	88.79	ND	100.0	ug/L	89%		69-131	2	30	5

Batch QC

QC1336524 Analyte	Result	Source	Spiked	Units	Recovery	Qual	Limits	RPD	RPD	
		Sample							Lim	DF
		Result								
Isopropylbenzene	92.18	ND	100.0	ug/L	92%		69-131	2	31	5
1,1,2,2-Tetrachloroethane	92.76	ND	100.0	ug/L	93%		67-132	10	30	5
1,2,3-Trichloropropane	95.32	ND	100.0	ug/L	95%		69-128	3	29	5
Propylbenzene	98.81	ND	100.0	ug/L	99%		69-133	4	30	5
Bromobenzene	99.64	ND	100.0	ug/L	100%		73-124	1	29	5
1,3,5-Trimethylbenzene	100.4	ND	100.0	ug/L	100%		71-134	2	31	5
2-Chlorotoluene	98.89	ND	100.0	ug/L	99%		71-130	5	30	5
4-Chlorotoluene	97.68	ND	100.0	ug/L	98%		70-130	2	30	5
tert-Butylbenzene	98.93	ND	100.0	ug/L	99%		70-132	4	31	5
1,2,4-Trimethylbenzene	99.38	ND	100.0	ug/L	99%		70-131	3	29	5
sec-Butylbenzene	99.34	ND	100.0	ug/L	99%		70-135	5	31	5
para-Isopropyl Toluene	99.89	ND	100.0	ug/L	100%		69-135	2	31	5
1,3-Dichlorobenzene	97.49	ND	100.0	ug/L	97%		74-128	4	29	5
1,4-Dichlorobenzene	93.74	ND	100.0	ug/L	94%		71-122	5	29	5
n-Butylbenzene	96.94	ND	100.0	ug/L	97%		68-137	4	32	5
1,2-Dichlorobenzene	96.84	ND	100.0	ug/L	97%		74-126	6	29	5
1,2-Dibromo-3-Chloropropane	88.98	ND	100.0	ug/L	89%		65-127	3	31	5
1,2,4-Trichlorobenzene	93.27	ND	100.0	ug/L	93%		67-136	2	31	5
Hexachlorobutadiene	101.6	ND	100.0	ug/L	102%		66-155	5	32	5
Naphthalene	83.76	ND	100.0	ug/L	84%		66-133	4	29	5
1,2,3-Trichlorobenzene	94.67	ND	100.0	ug/L	95%		68-134	2	31	5
Isopropyl Ether (DIPE)	174.4	ND	200.0	ug/L	87%		55-131	5	30	5
Ethyl tert-Butyl Ether (ETBE)	88.93	ND	100.0	ug/L	89%		58-127	5	31	5
tert-Butyl Alcohol (TBA)	415.1	ND	500.0	ug/L	83%		44-125	7	33	5
Methyl tert-Amyl Ether (TAME)	90.72	ND	100.0	ug/L	91%		62-123	3	30	5
Surrogates										
Dibromofluoromethane	252.2		250.0	ug/L	101%		70-130			5
1,2-Dichloroethane-d4	255.6		250.0	ug/L	102%		70-130			5
Toluene-d8	255.4		250.0	ug/L	102%		70-130			5
Bromofluorobenzene	234.5		250.0	ug/L	94%		70-130			5

* Value is outside QC limits
 ND Not Detected
 b See narrative

Chiquita Canyon Landfill



- Data Driven Reaction Area Boundary
- Reaction Area Boundary – Condition 9A
- Chiquita Canyon Property Line