

Archived: Monday, December 22, 2025 12:30:22 PM
From: [Kate Logan](#)
Sent: Friday, December 19, 2025 3:00:13 PM
To: [Karen Gork](#)
Cc: Todd.Thalhamer@Calrecycle.ca.gov
Subject: Chiquita Canyon Landfill – Geosynthetic Cover – Mitigation Measure 4.1
Importance: Normal
Sensitivity: None
Attachments: [CCLF Reaction Area _Reactive Wells_ 2025-12-12.pdf](#) [050 2025-12-05 Milestone 2B Chiquita Canyon LF Isopach _November 2025.pdf](#) [2025-12-17 Figure 1 EVOH Location-Layout1 \(2\).pdf](#)

[EXTERNAL SENDER: Use caution with links/attachments]

Below is Chiquita's weekly update on the status of the installation of the 60-mil EVOH/HDPE geomembrane cover at the Chiquita Canyon Landfill, in accordance with Mitigation Measure 4.1 of the LEA's Compliance Order issued May 1, 2025.

As of December 12, 2025, D&E, on behalf of Chiquita, has installed approximately 781,783 square feet of tan 60-mil EVOH/HDPE geomembrane cover. Chiquita completed the deployment of EVOH/HDPE geomembrane cover in Segment 3. Additional repairs and detailing were performed on existing panels, including fabricating boots, patching, extrusion welding, and re-seaming, as needed.

The attached site map shows the approximate extent of geomembrane cover installed as of Friday, December 12, 2025, as well as the geomembrane coverage described in the revised draft workplan for extension of the geomembrane cover area submitted to the LEA, the US EPA, and DTSC on October 3, 2025. Also attached to this submission are the November 2025 monthly isopach map and a figure identifying wells showing signs of reaction as of December 12, 2025. Due to technical limitations, we are currently unable to create one figure including all of this data.

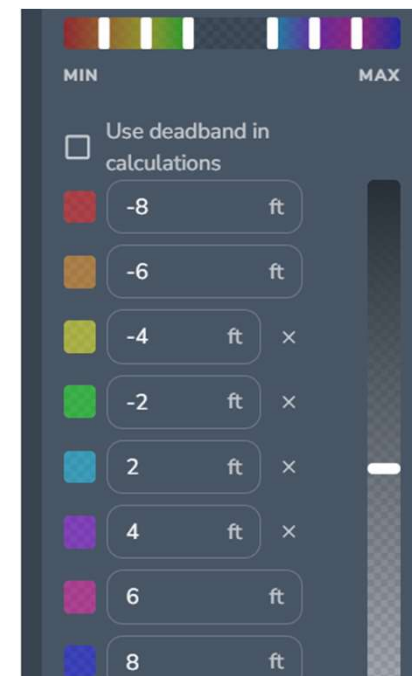
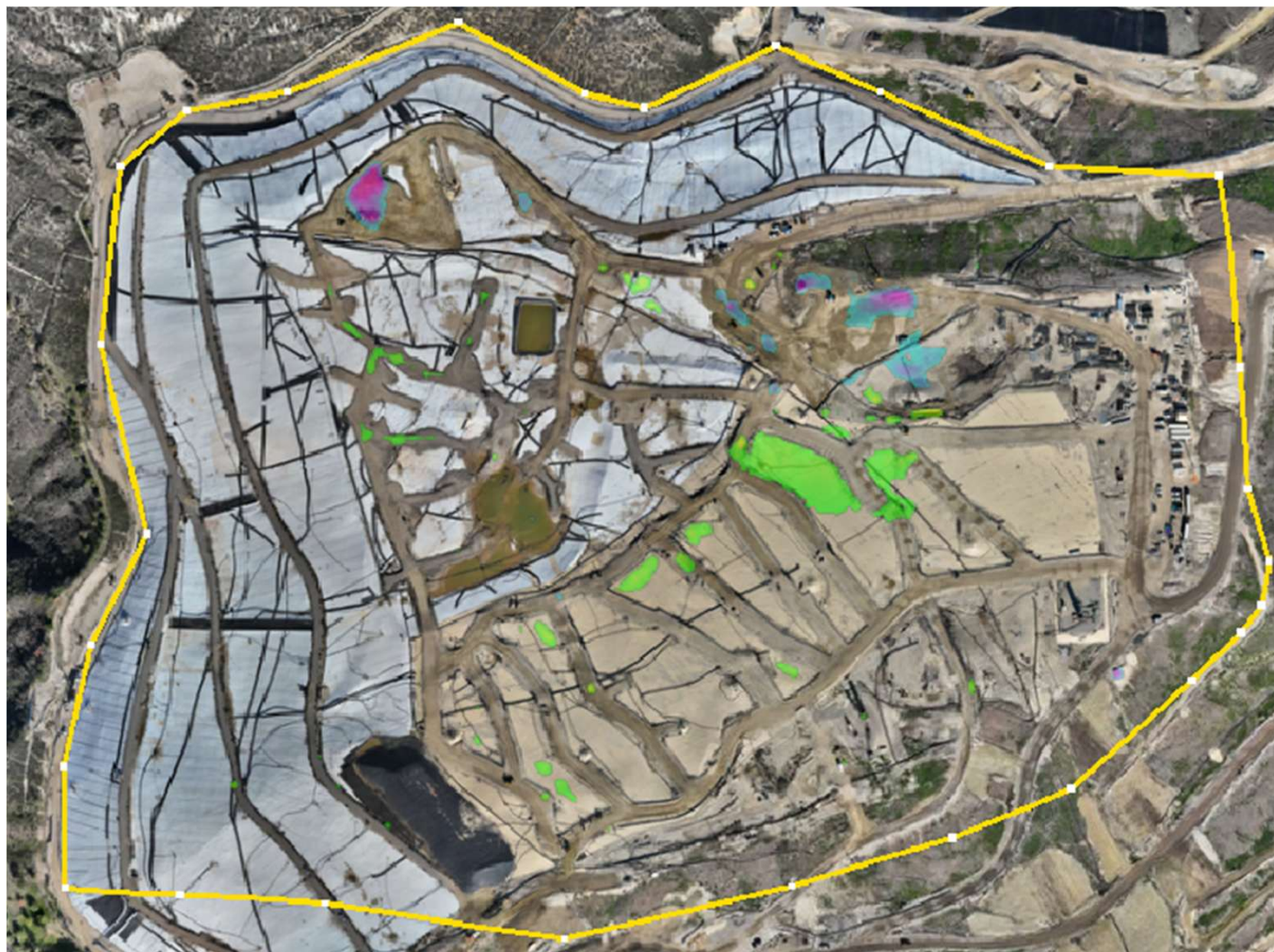
Additionally, during the week of December 8, 2025, Chiquita continued preparing an area known as "the bowl" for EVOH/HDPE geomembrane cover deployment. Currently, "the bowl" is covered with 30-mil HDPE geomembrane cover. Once the preparation work has been completed, Chiquita will replace portions of the existing 30-mil HDPE geomembrane cover with 60-mil EVOH/HDPE geomembrane cover. As part of the preparation work, as of December 12, 2025, Chiquita has placed approximately 8,400 cubic yards of soil in grids 178, 184, and 185, as shown in the map attached. The depth of soil varies, but ranges between 0.5 feet and 4 feet. Chiquita is replacing the existing 30-mil HDPE geomembrane cover in these areas to address the discoloration of geomembrane cover in this area.

Thanks,

Kate Logan
Senior Remediation Project Manager
Chiquita Canyon Landfill
29201 Henry Mayo Dr.
Castaic, CA 91384
(m) (346) 807-5547
Kate.Logan@WasteConnections.com



Chiquita Canyon Landfill - Isopach



December 3, 2025 Survey Image. October 29, 2025 vs. December 3, 2025

P:\SITES\CHIQUITA CYN LF\MONITORING SUMMARY\FIGURES-WEEKLY\RM22.1077-CCL-EVOH-FIG 1-(2025-12-17).DWG December 18, 2025 - 3:31 PM BY: GLA-USER

