

**Archived:** Thursday, December 11, 2025 4:14:45 PM  
**From:** [Kate Logan](#)  
**Sent:** Friday, December 5, 2025 10:54:06 AM  
**To:** [KGork@ph.lacounty.gov](mailto:KGork@ph.lacounty.gov)  
**Cc:** [Thalhamer, Todd@CalRecycle](mailto:Thalhamer, Todd@CalRecycle)  
**Subject:** Chiquita Canyon Landfill – Geosynthetic Cover – Mitigation Measure 4.1  
**Importance:** Normal  
**Sensitivity:** None  
**Attachments:** [4050 2025-12-05 Milestone 2B Chiquita Canyon LF Isopach\\_November 2025.pdf](#) [2025-11-14 Figure 1 EVOH Location-Layout1 \(2\).pdf](#) [CLF Reaction Area \\_Reactive Wells\\_ 2025-12-05.pdf](#)

---

[EXTERNAL SENDER: Use caution with links/attachments]

Below is Chiquita's weekly update on the status of the installation of the 60-mil EVOH/HDPE geomembrane cover at the Chiquita Canyon Landfill, in accordance with Mitigation Measure 4.1 of the LEA's Compliance Order issued May 1, 2025.

As of November 28, 2025, D&E, on behalf of Chiquita, has installed approximately 716,077 square feet of tan 60-mil EVOH/HDPE geomembrane cover. Wet weather conditions during the week of November 22, 2025 and the federal holiday (Thanksgiving) prevented further deployment of the EVOH/HDPE geomembrane cover. Chiquita has resumed use of the access roads installed over areas of the 60-mil EVOH/HDPE cover and will be adding additional rock to complete the installation of those access roads. Additional repairs and detailing were performed on existing panels, including fabricating boots, patching, extrusion welding, and re-seaming, as needed. Chiquita also continued to prepare the Segment 3 area for EVOH/HDPE geomembrane cover deployment, including installing additional piping infrastructure. Chiquita experienced additional delays during the week of December 1, 2025 as a result of wet weather conditions on site. D&E will resume deployment of the EVOH/HDPE geomembrane cover on December 8, 2025.

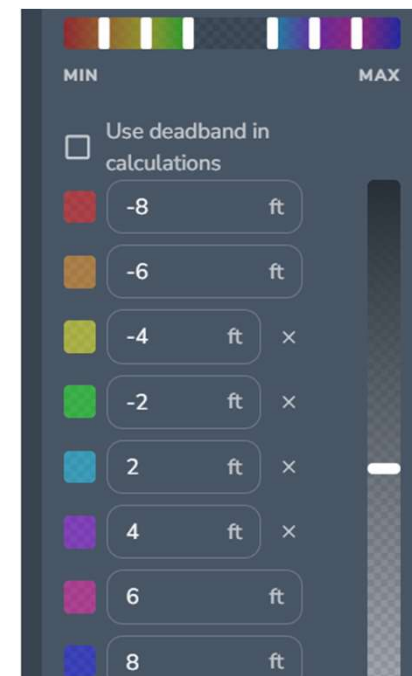
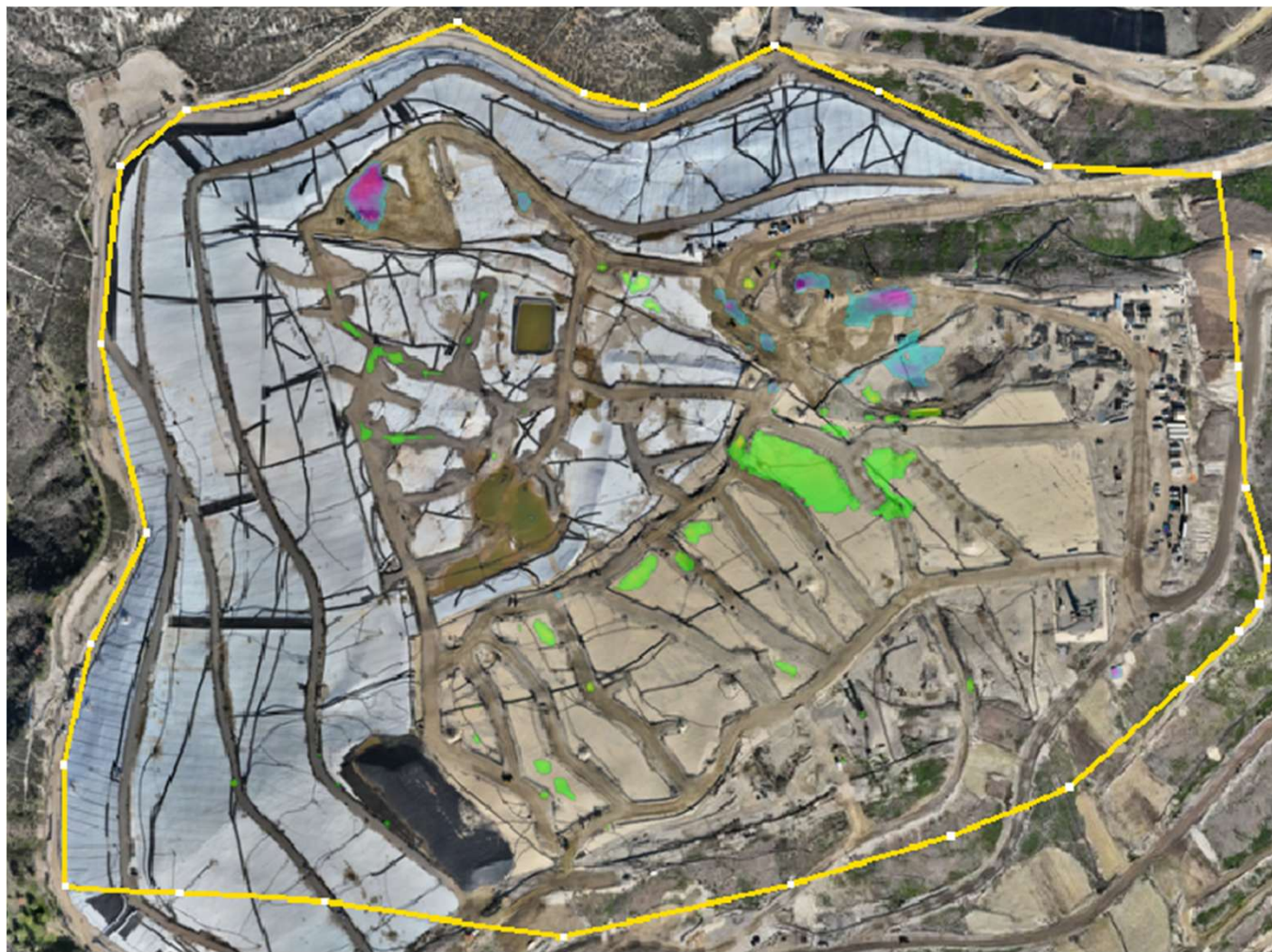
The attached site map shows the approximate extent of geomembrane cover installed as of Friday, November 28, 2025, as well as the geomembrane coverage described in the revised draft workplan for extension of the geomembrane cover area submitted to the LEA, the US EPA, and DTSC on October 3, 2025. Also attached to this submission are the November 2025 monthly isopach map and a figure identifying wells showing signs of reaction as November 28, 2025. Due to technical limitations, we are currently unable to create one figure including all of this data.

Thanks,

Kate Logan  
**Senior Remediation Project Manager**  
**Chiquita Canyon Landfill**  
29201 Henry Mayo Dr.  
Castaic, CA 91384  
(m) (346) 807-5547  
[Kate.Logan@WasteConnections.com](mailto:Kate.Logan@WasteConnections.com)



# Chiquita Canyon Landfill - Isopach



December 3, 2025 Survey Image. October 29, 2025 vs. December 3, 2025



P:\SITES\CHIQUITA CYN LF\MONITORING SUMMARY\FIGURES-WEEKLY\RM22.1077-CCL-EVOH-FIG 1-(2025-11-12).DWG November 13, 2025 - 4:53 PM BY: GLA-USER

