

Archived: Thursday, October 23, 2025 10:29:14 AM
From: [Kate Logan](#)
Sent: Fri, 17 Oct 2025 19:08:31
To: [Karen Gork](#)
Cc: Todd.Thalhamer@Calrecycle.ca.gov
Subject: Chiquita Canyon Landfill – Geosynthetic Cover – Mitigation Measure 4.1
Importance: Normal
Sensitivity: None
Attachments: [2025-10-10 Figure 1 EVOH Location-Layout1 \(2\).pdf](#) [2025-10-03 Milestone 2B Chiquita Canyon LF Isopach_September 2025.pdf](#) [CLF Reaction Area_Reactive Wells_2025-10-10.pdf](#)

[EXTERNAL SENDER: Use caution with links/attachments]

Below is Chiquita's weekly update on the status of the installation of the 60-mil EVOH/HDPE geomembrane cover at the Chiquita Canyon Landfill, in accordance with Mitigation Measure 4.1 of the LEA's Compliance Order issued May 1, 2025.

As of October 10, 2025, D&E, on behalf of Chiquita, has installed approximately 655,140 square feet of tan EVOH/HDPE 60-mil geomembrane cover. Chiquita also continued to perform repairs of the existing 30-mil HDPE geomembrane cover using the 60-mil EVOH/HDPE geomembrane. These repairs included fabricating boots, patching, extrusion welding, and re-seaming, as needed.

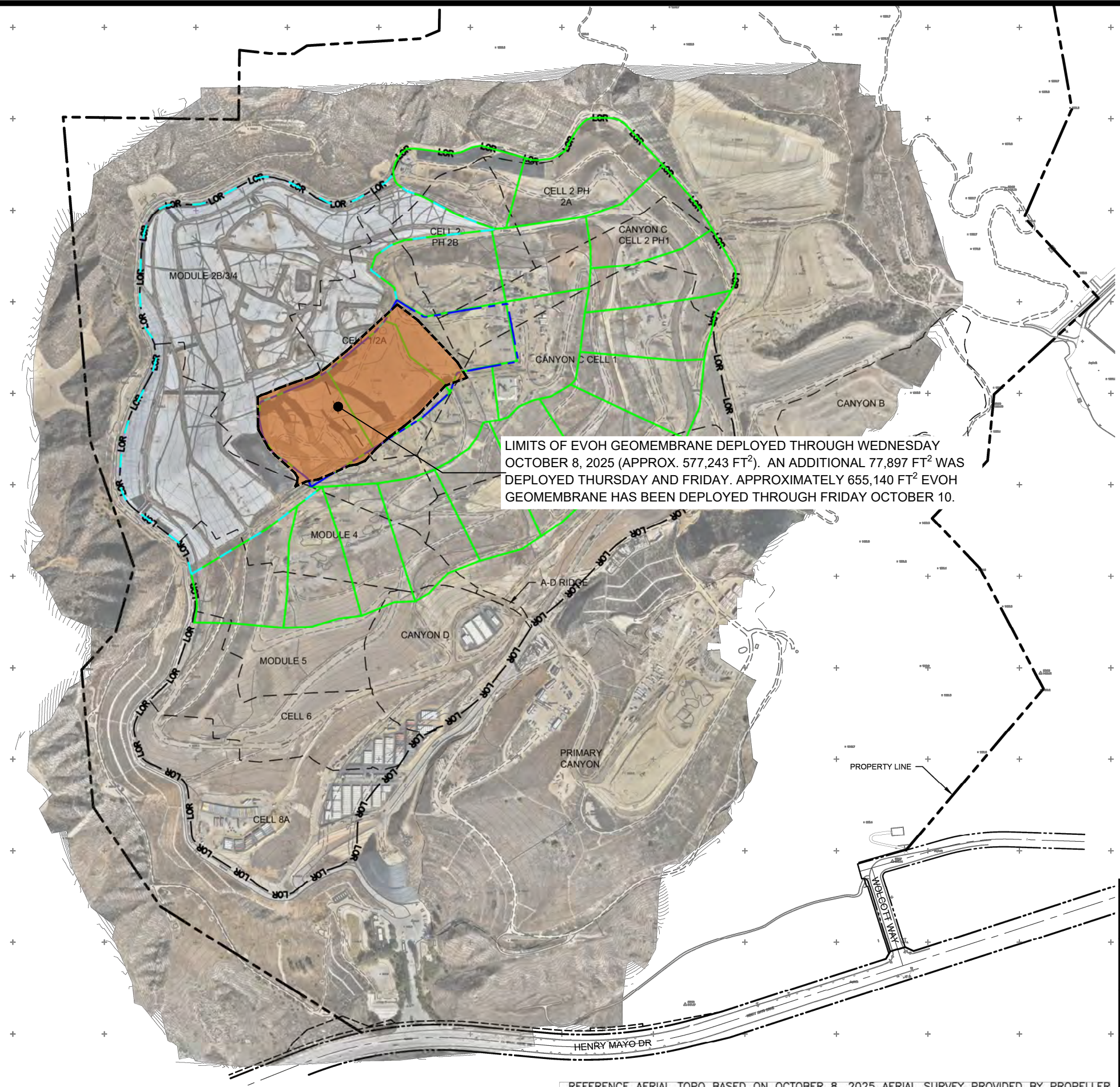
The attached site map shows the approximate extent of geomembrane cover installed as of Friday, October 10, 2025, as well as the geomembrane coverage described in the revised draft workplan for extension of the geomembrane cover area submitted to the LEA, the US EPA, and DTSC on October 3, 2025. Also attached to this submission are the September 2025 monthly isopach map and a figure identifying wells showing signs of reaction as October 10, 2025. Due to technical limitations, we are currently unable to create one figure including all of this data.

Thanks,

Kate Logan
Regional Engineer
Chiquita Canyon Landfill
29201 Henry Mayo Dr.
Castaic, CA 91384
(m) (346) 807-5547
Kate.Logan@WasteConnections.com



P:\SITES\CHIQUITA CYN LF\MONITORING SUMMARY\FIGURES-WEEKLY\RM22.1077-CCL-EVOH-FIG 1-(2025-10-08).DWG October 14, 2025 - 10:50 AM BY: GLA-USER



LEGEND:

- PROPERTY LINE
- LOR-LOR- APPROXIMATE LIMIT OF REFUSE
- CELL LIMIT
- - - EXISTING GEOMEMBRANE DEPLOYMENT AREA
- - - INITIAL SUPPLEMENTAL GEOMEMBRANE DEPLOYMENT AREA
- SUBSEQUENT SUPPLEMENTAL GEOMEMBRANE AREA

NOTE:

1. EXISTING GEOMEMBRANE DEPLOYMENT AREA IS APPROXIMATELY 48.3 ACRES.
2. EXISTING GEOMEMBRANE IS 30-MIL HDPE, EXCEPT FOR 1.3 ACRES OF 40-MIL HDPE.
3. EACH PROPOSED DEPLOYMENT AREA IS APPROXIMATELY 5 ACRES.
4. NEW GEOMEMBRANE WILL BE 60-MIL HDPE WITH AN INTERNAL CORE EVOH RESIN BARRIER.

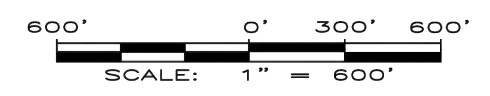


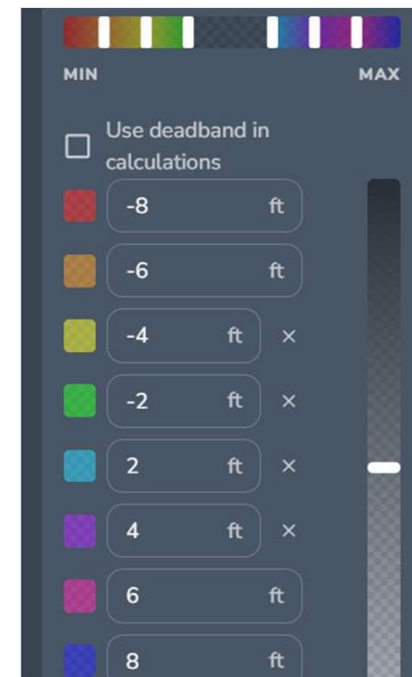
FIGURE 1
APPROXIMATE LIMITS OF
EVOH GEOMEMBRANE
CHIQUITA CANYON LANDFILL
CASTAIC, CA



DRAWN BY: LP/RM | DATE: OCTOBER 2025 | JOB NO.: RM22.1077

REFERENCE AERIAL TOPO BASED ON OCTOBER 8, 2025 AERIAL SURVEY PROVIDED BY PROPELLER

Chiquita Canyon Landfill - Isopach



October 1, 2025 Survey Image. August 27, 2025 vs October 1, 2025

