

Archived: Thursday, October 16, 2025 10:40:07 AM
From: [Kate Logan](#)
Sent: Fri, 10 Oct 2025 21:40:01
To: [Karen Gork](#)
Cc: Todd.Thalhamer@Calrecycle.ca.gov
Subject: Chiquita Canyon Landfill – Geosynthetic Cover – Mitigation Measure 4.1
Importance: Normal
Sensitivity: None
Attachments: [2025-10-03 Figure 1 EVOH Location-Layout1 \(2\).pdf](#) [CLF Reaction Area _Reactive Wells_ 2025-10-03.pdf](#) [050 2025-09-05 Milestone 2B Chiquita Canyon LF Isopach_August 2025.pdf](#)

[EXTERNAL SENDER: Use caution with links/attachments]

Below is Chiquita's weekly update on the status of the installation of the 60-mil EVOH/HDPE geomembrane cover at the Chiquita Canyon Landfill, in accordance with Mitigation Measure 4.1 of the LEA's Compliance Order issued May 1, 2025.

As of October 3, 2025, D&E, on behalf of Chiquita, has installed approximately 500,613 square feet of tan EVOH/HDPE 60-mil geomembrane cover. Chiquita also continued to perform repairs of the existing 30-mil HDPE geomembrane cover using the 60-mil EVOH/HDPE geomembrane. These repairs included fabricating boots, patching, extrusion welding, and re-seaming, as needed.

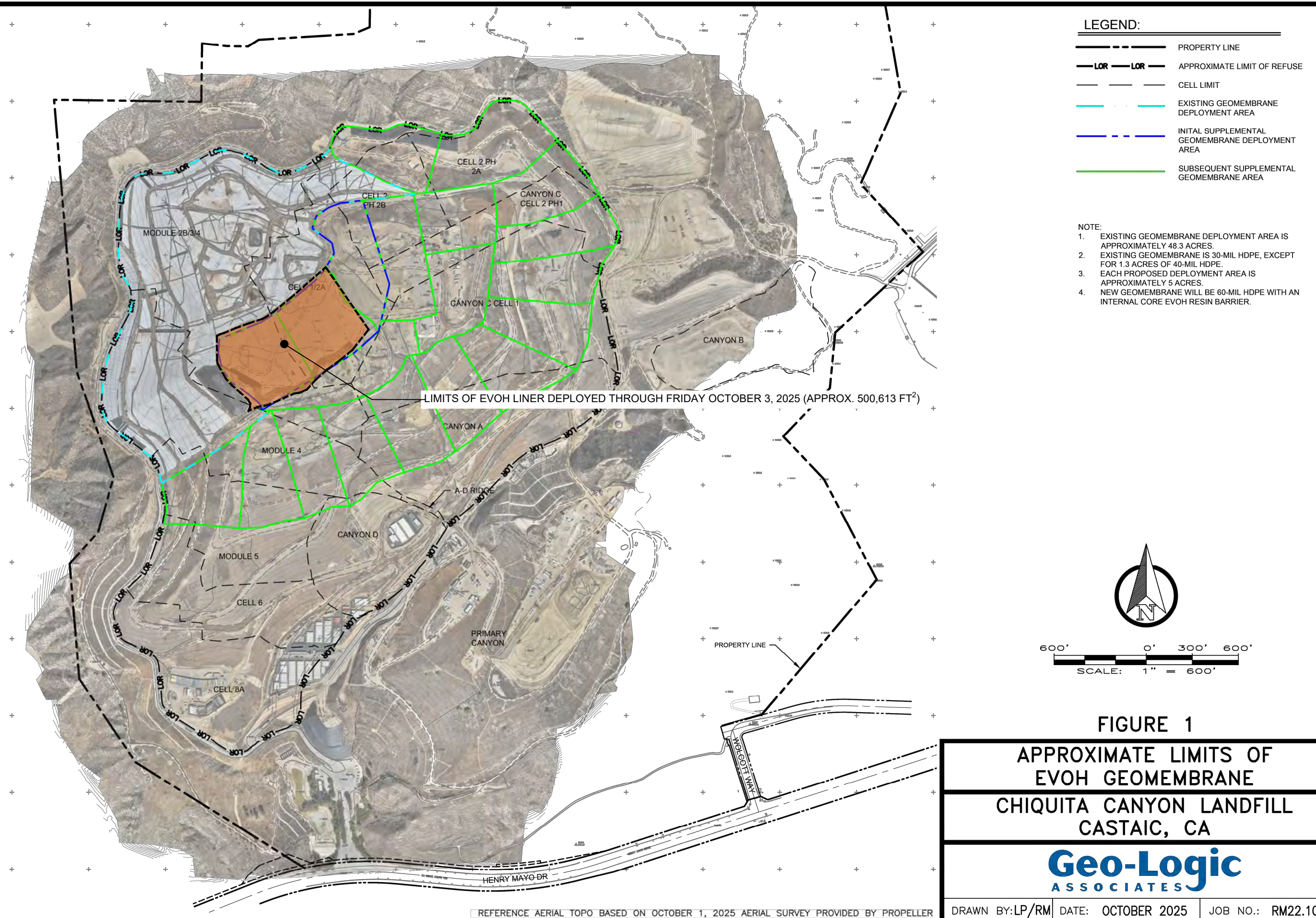
The attached site map shows the approximate extent of geomembrane cover installed as of Friday, October 3, 2025, as well as the geomembrane coverage described in the draft workplan for extension of the geomembrane cover area dated May 16, 2025, and submitted to the LEA and DTSC. On October 3, 2025, Chiquita submitted its revised draft workplan to incorporate a phased installation of additional geomembrane cover in response to the comments received from the LEA, DTSC, CalRecycle, and the US EPA. Also attached to this submission are the September 2025 monthly isopach map and a figure identifying wells showing signs of reaction as October 3, 2025. Due to technical limitations, we are currently unable to create one figure including all of this data.

Thanks,

Kate Logan
Regional Engineer
Chiquita Canyon Landfill
29201 Henry Mayo Dr.
Castaic, CA 91384
(m) (346) 807-5547
Kate.Logan@WasteConnections.com



P:\SITES\CHIQUITA CYN LF\MONITORING SUMMARY\FIGURES-WEEKLY\RM22.1077-CCL-EVOH-FIG 1-(2025-10-01).DWG October 2, 2025 - 10:43 AM BY: GLA-USER



LEGEND:

- PROPERTY LINE
- LOR — LOR — APPROXIMATE LIMIT OF REFUSE
- CELL LIMIT
- EXISTING GEOMEMBRANE DEPLOYMENT AREA
- INITIAL SUPPLEMENTAL GEOMEMBRANE DEPLOYMENT AREA
- SUBSEQUENT SUPPLEMENTAL GEOMEMBRANE AREA

- NOTE:
- EXISTING GEOMEMBRANE DEPLOYMENT AREA IS APPROXIMATELY 48.3 ACRES.
 - EXISTING GEOMEMBRANE IS 30-MIL HDPE, EXCEPT FOR 1.3 ACRES OF 40-MIL HDPE.
 - EACH PROPOSED DEPLOYMENT AREA IS APPROXIMATELY 5 ACRES.
 - NEW GEOMEMBRANE WILL BE 60-MIL HDPE WITH AN INTERNAL CORE EVOH RESIN BARRIER.



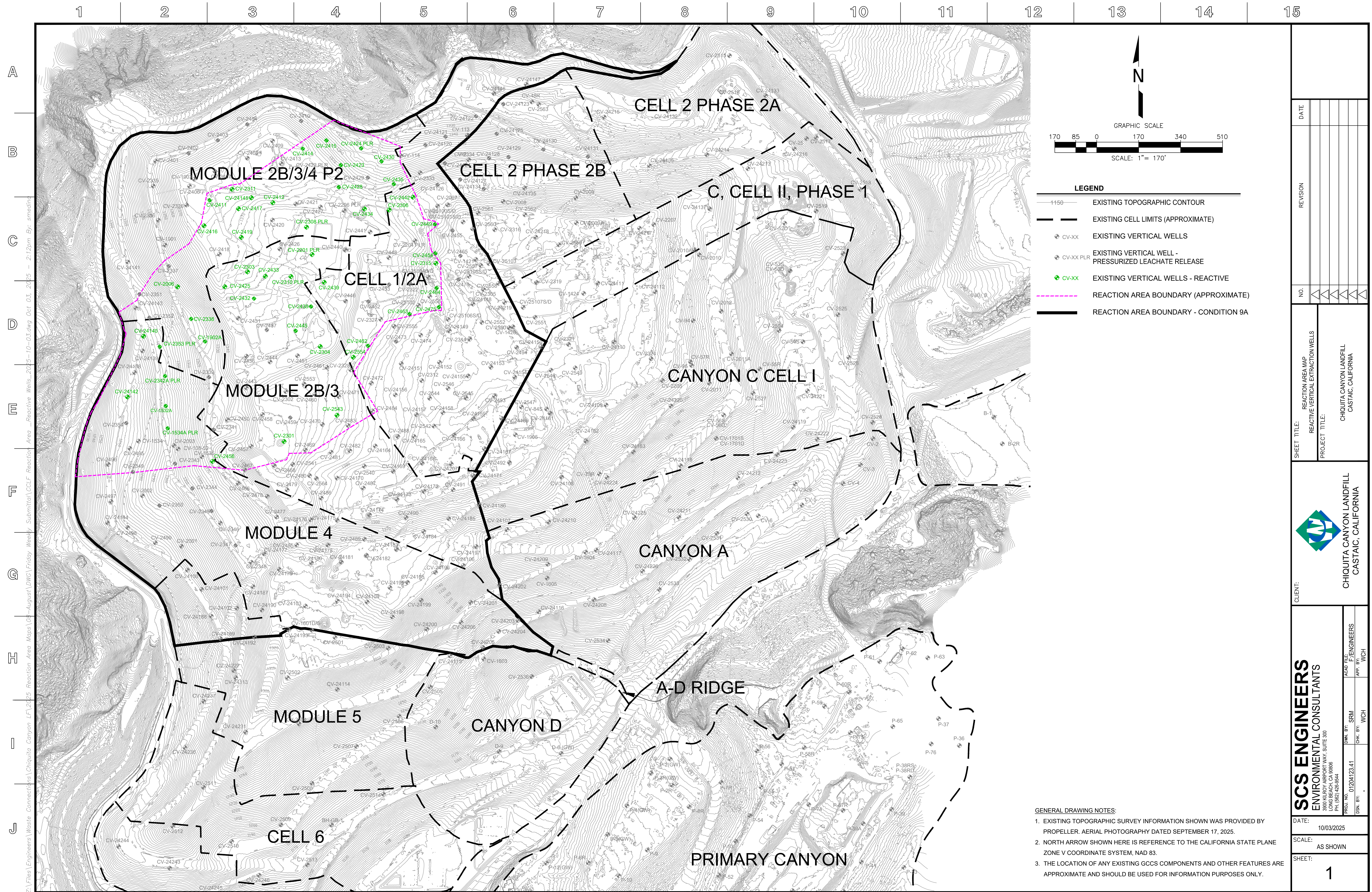
600' 0' 300' 600'
SCALE: 1" = 600'

FIGURE 1
APPROXIMATE LIMITS OF
EVOH GEOMEMBRANE
CHIQUITA CANYON LANDFILL
CASTAIC, CA

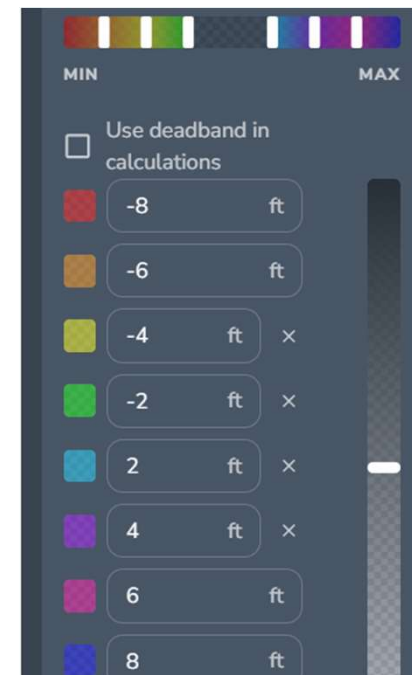
Geo-Logic
ASSOCIATES

DRAWN BY: LP/RM DATE: OCTOBER 2025 JOB NO.: RM22.1077

REFERENCE AERIAL TOPO BASED ON OCTOBER 1, 2025 AERIAL SURVEY PROVIDED BY PROPELLER



Chiquita Canyon Landfill - Isopach



August 27, 2025 Survey Image. July 31, 2025 vs August 27, 2025