

Archived: Thursday, October 9, 2025 1:43:36 PM
From: [Kate Logan](#)
Sent: Friday, October 3, 2025 4:39:12 PM
To: KGork@ph.lacounty.gov
Cc: Todd.Thalhamer@Calrecycle.ca.gov
Subject: Chiquita Canyon Landfill – Geosynthetic Cover – Mitigation Measure 4.1
Importance: Normal
Sensitivity: None
Attachments: [2025-09-26 Figure 1 EVOH Location-Layout1 \(2\).pdf](#) [CLF Reaction Area _Reactive Wells_ 2025-09-26.pdf](#) [2025-10-03 Milestone 2B Chiquita Canyon LF Isopach _September 2025.pdf](#)

[EXTERNAL SENDER: Use caution with links/attachments]

Below is Chiquita's weekly update on the status of the installation of the 60-mil EVOH/HDPE geomembrane cover at the Chiquita Canyon Landfill, in accordance with Mitigation Measure 4.1 of the LEA's Compliance Order issued May 1, 2025.

During the week of September 22, 2025, Chiquita prioritized performing repairs of the existing 30-mil HDPE geomembrane cover using the 60-mil EVOH/HDPE geomembrane. These repairs included fabricating boots, patching, extrusion welding, and re-seaming, as needed. As of September 26, 2025, in addition to this repair work, D&E, on behalf of Chiquita, had installed approximately 429,532 square feet of tan 60-mil EVOH/HDPE geomembrane cover on the top deck of the landfill.

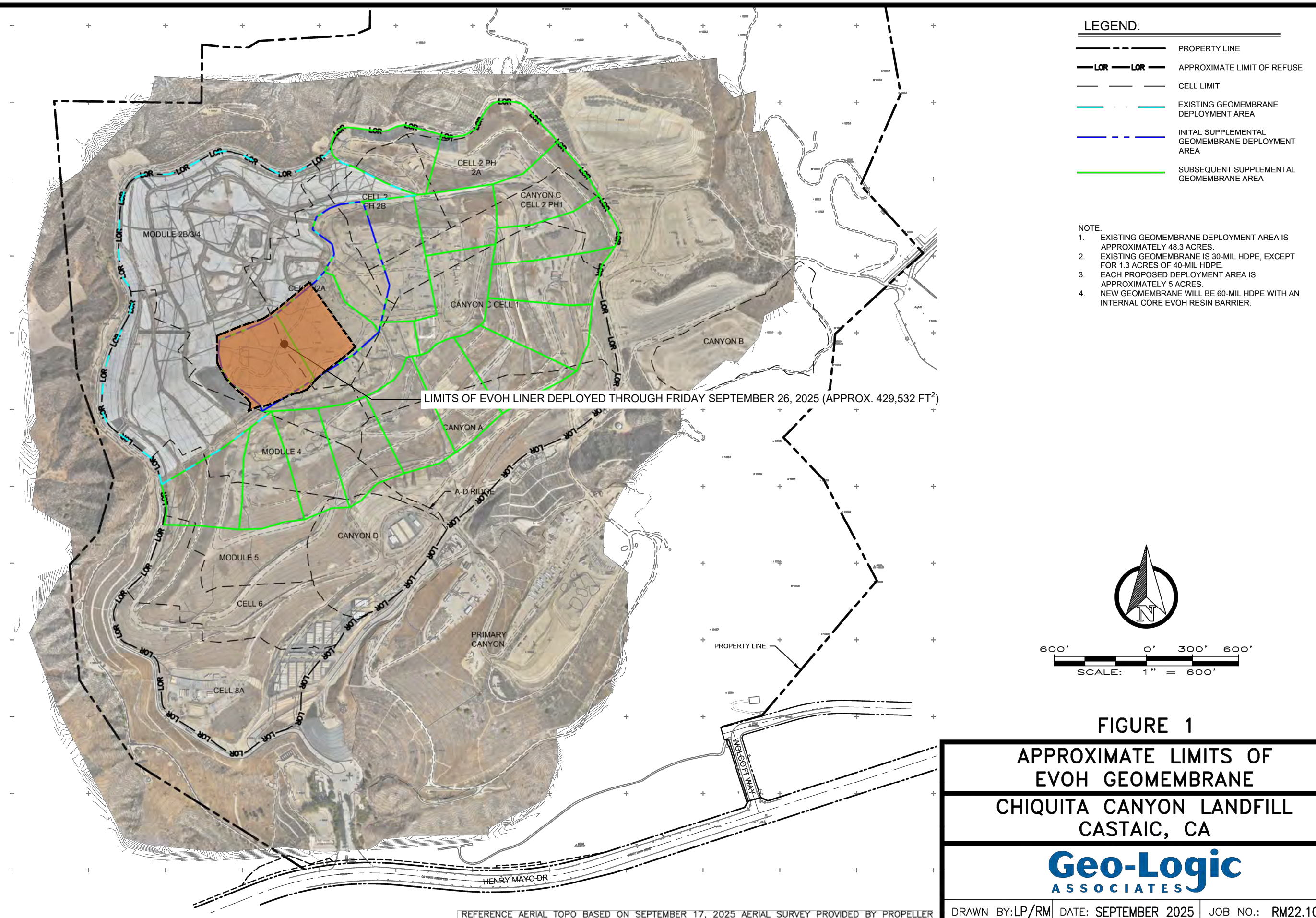
The attached site map shows the approximate extent of geomembrane cover installed as of Friday, September 26, 2025, as well as the geomembrane coverage described in the draft workplan for extension of the geomembrane cover area dated May 16, 2025, and submitted to the LEA and DTSC. Chiquita is developing a revised draft workplan to incorporate a phased installation of additional geomembrane cover in response to the comments received from the LEA, DTSC, CalRecycle, and the US EPA. Also attached to this submission are the September 2025 monthly isopach map and a figure identifying wells showing signs of reaction as September 26, 2025. Due to technical limitations, we are currently unable to create one figure including all of this data.

Thanks,

Kate Logan
Regional Engineer
Chiquita Canyon Landfill
29201 Henry Mayo Dr.
Castaic, CA 91384
(m) (346) 807-5547
Kate.Logan@WasteConnections.com



P:\SITES\CHIQUITA CYN LF\MONITORING SUMMARY\FIGURES-WEEKLY\RM22.1077-CCL-EVOH-FIG 1-(2025-09-17).DWG September 18, 2025 -- 1:30 PM BY: GLA-USER



LEGEND:

- PROPERTY LINE
- - - LOR - - - APPROXIMATE LIMIT OF REFUSE
- CELL LIMIT
- EXISTING GEOMEMBRANE DEPLOYMENT AREA
- INITIAL SUPPLEMENTAL GEOMEMBRANE DEPLOYMENT AREA
- SUBSEQUENT SUPPLEMENTAL GEOMEMBRANE AREA

- NOTE:
- EXISTING GEOMEMBRANE DEPLOYMENT AREA IS APPROXIMATELY 48.3 ACRES.
 - EXISTING GEOMEMBRANE IS 30-MIL HDPE, EXCEPT FOR 1.3 ACRES OF 40-MIL HDPE.
 - EACH PROPOSED DEPLOYMENT AREA IS APPROXIMATELY 5 ACRES.
 - NEW GEOMEMBRANE WILL BE 60-MIL HDPE WITH AN INTERNAL CORE EVOH RESIN BARRIER.



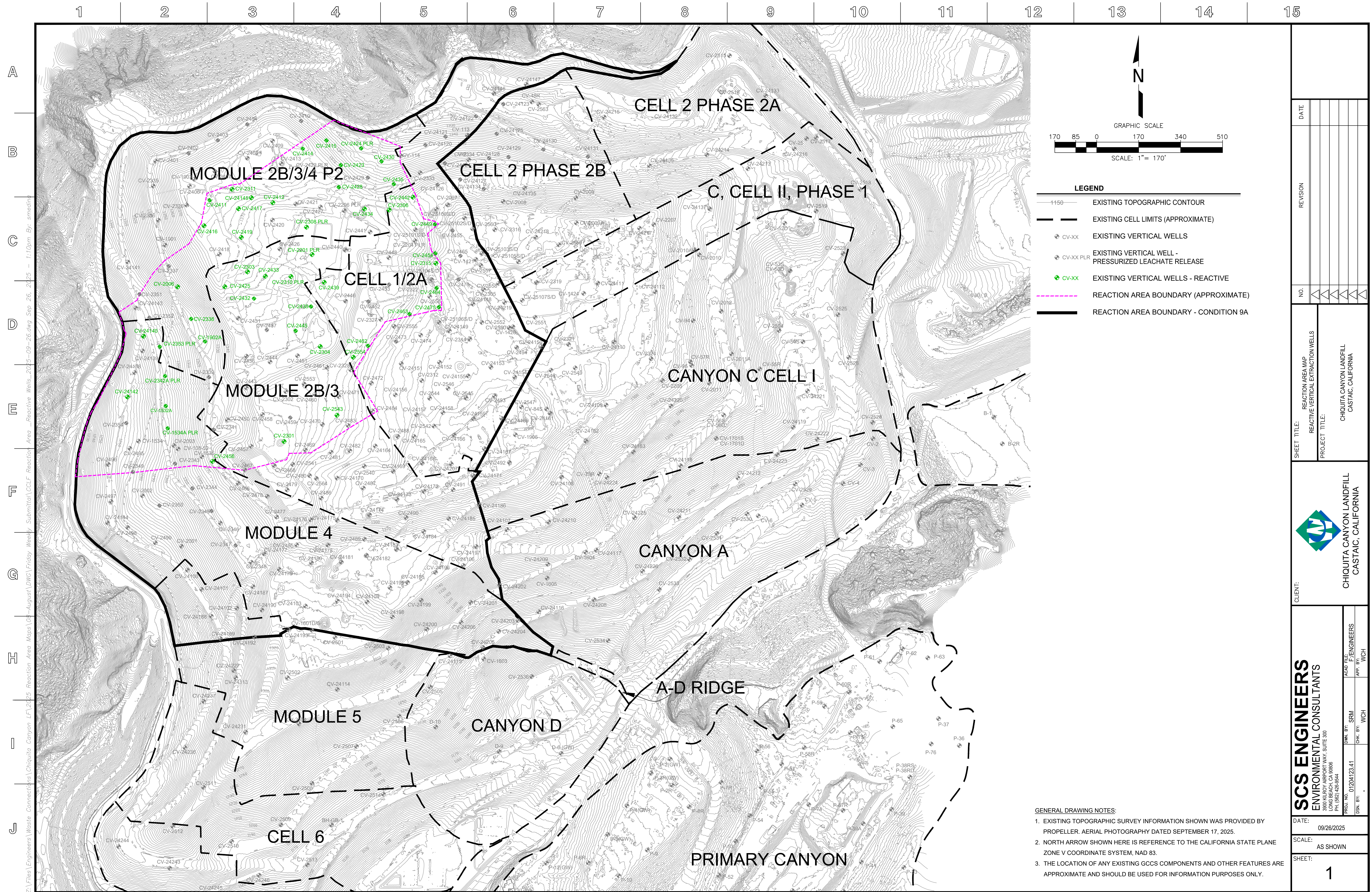
600' 0' 300' 600'
SCALE: 1" = 600'

FIGURE 1
APPROXIMATE LIMITS OF
EVOH GEOMEMBRANE
CHIQUITA CANYON LANDFILL
CASTAIC, CA

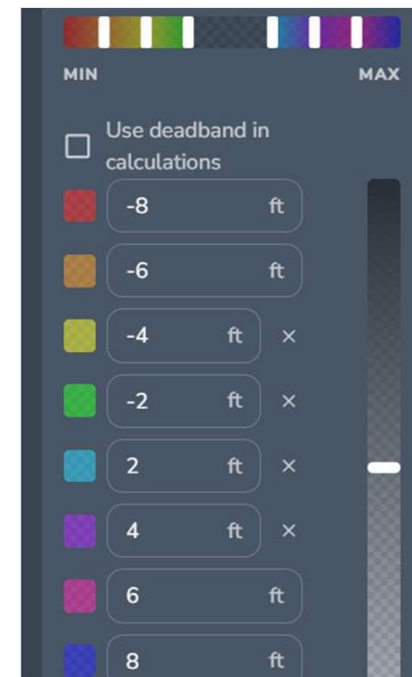


DRAWN BY: LP/RM DATE: SEPTEMBER 2025 JOB NO.: RM22.1077

REFERENCE AERIAL TOPO BASED ON SEPTEMBER 17, 2025 AERIAL SURVEY PROVIDED BY PROPELLER



Chiquita Canyon Landfill - Isopach



October 1, 2025 Survey Image. August 27, 2025 vs October 1, 2025