

Archived: Thursday, September 18, 2025 9:00:17 AM
From: [Kate Logan](#)
Sent: Fri, 12 Sep 2025 17:37:13
To: KGork@ph.lacounty.gov
Cc: Todd.Thalhamer@Calrecycle.ca.gov
Subject: Chiquita Canyon Landfill – Geosynthetic Cover – Mitigation Measure 4.1
Importance: Normal
Sensitivity: None
Attachments: [2025-09-05 EVOH Deployment-FIGURE 1.pdf](#) [CLF Reaction Area _Reactive Wells_2025-09-11.pdf](#)
[4050 2025-09-05 Milestone 2B Chiquita Canyon LF Isopach_August 2025.pdf](#)

[EXTERNAL SENDER: Use caution with links/attachments]

Hello, all,

Below is Chiquita's weekly update on the status of the installation of the EVOH 60-mil geomembrane cover at the Chiquita Canyon Landfill, in accordance with Mitigation Measure 4.1 of the LEA's Compliance Order issued May 1, 2025.

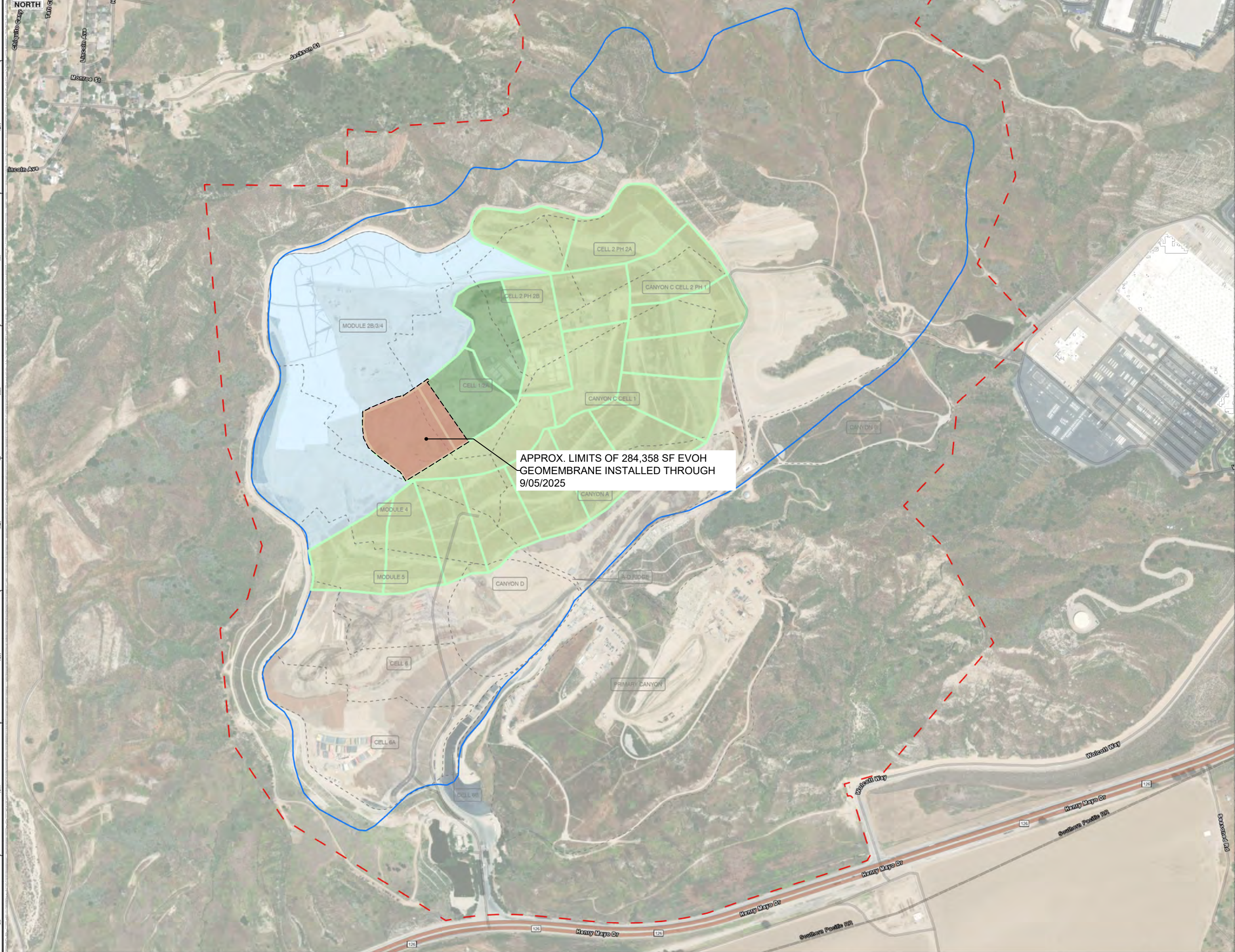
As of September 5, 2025, D&E, on behalf of Chiquita, has installed approximately 284,358 square feet of tan EVOH 60-mil geomembrane cover on the top deck of the Landfill. Chiquita also continued its installation of the EVOH 60-mil geomembrane cover at Tank Farm 13 and continued to use the EVOH 60-mil geomembrane to perform repairs of the 30-mil geomembrane cover that is currently installed at the Landfill.

Chiquita has completed the deployment of the EVOH 60-mil geomembrane cover in the first of the three, five-acre phases of the initial supplemental geomembrane deployment area contemplated by Chiquita's draft workplan dated May 16, 2025, which has been submitted to the LEA and DTSC. The attached site map shows the approximate extent of the geomembrane cover installed as of Friday, September 5, 2025, as well as the geomembrane coverage described in the draft workplan. Note that Chiquita is developing a revised draft workplan to incorporate a phased installation of additional geomembrane cover in response to comments received from the LEA, DTSC, CalRecycle, and the US EPA. Also attached to this submission are the August 2025 monthly isopach map and a figure identifying wells showing signs of reaction as of September 11, 2025. Due to technical limitations, we are currently unable to create one figure including all of this data.

Thanks,

Kate Logan
Regional Engineer
Chiquita Canyon Landfill
29201 Henry Mayo Dr.
Castaic, CA 91384
(m) (346) 807-5547
Kate.Logan@WasteConnections.com





- CELL LIMIT**
- EXISTING GEOMEMBRANE DEPLOYMENT AREA
 - INITIAL SUPPLEMENTAL GEOMEMBRANE DEPLOYMENT AREA
 - SUBSEQUENT SUPPLEMENTAL GEOMEMBRANE DEPLOYMENT AREA
- NOTES:**
- EXISTING GEOMEMBRANE DEPLOYMENT AREA IS APPROXIMATELY 48.3 ACRES.
 - EXISTING GEOMEMBRANE IS 30-MIL HDPE, EXCEPT FOR 1.3 ACRES OF 40-MIL HDPE.
 - EACH PROPOSED DEPLOYMENT AREA IS APPROXIMATELY 5 ACRES
 - NEW GEOMEMBRANE WILL BE 60-MIL HDPE WITH AN INTERNAL CORE EVOH RESIN BARRIER.





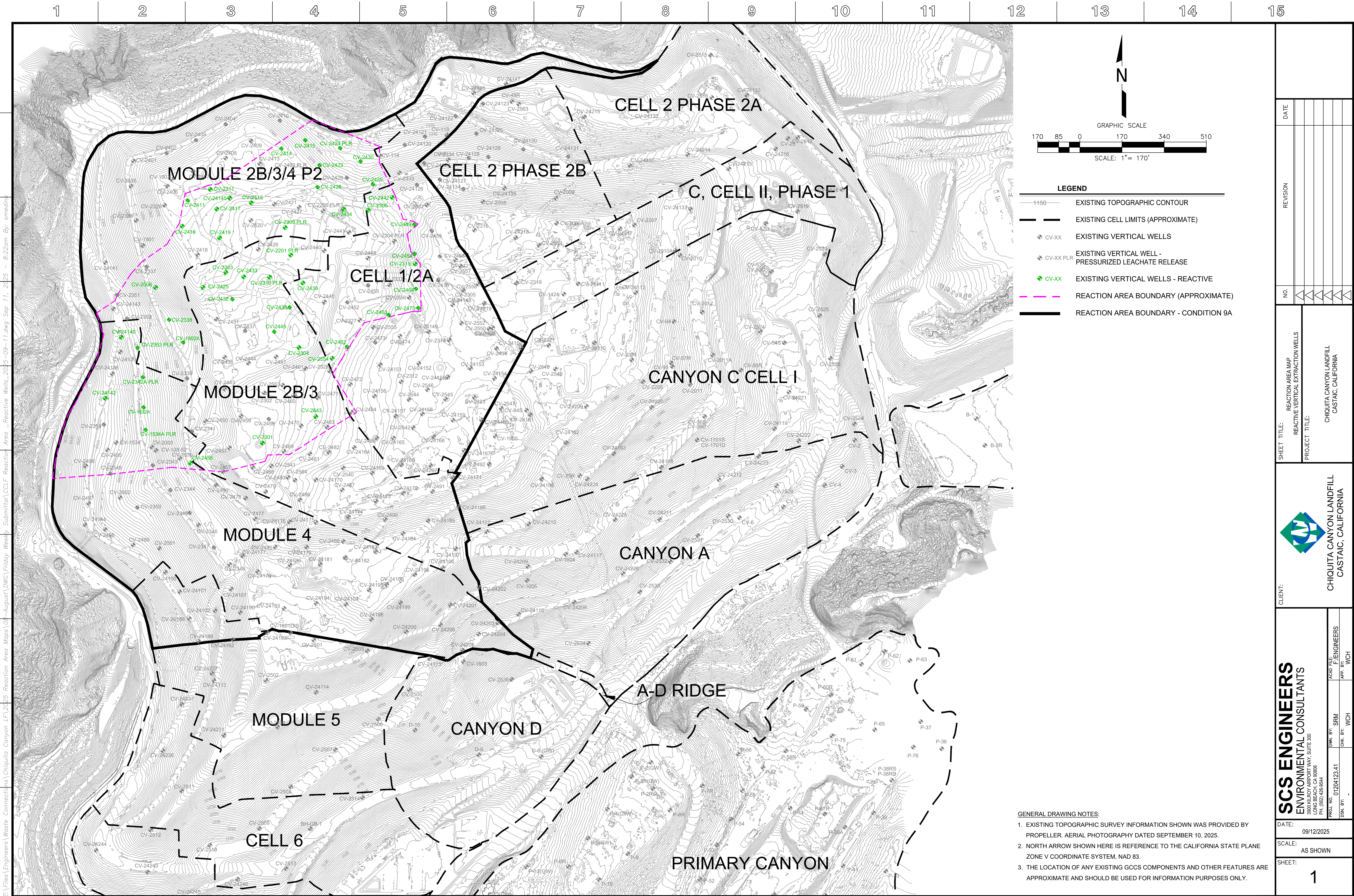
Civil & Environmental Consultants, Inc.

2356 Gold Meadow Way
Suite 120
Gold River, CA 95670
Ph: 916.503.0050 • 800.365.1111
www.cecinc.com

CHIQUITA CANYON LANDFILL

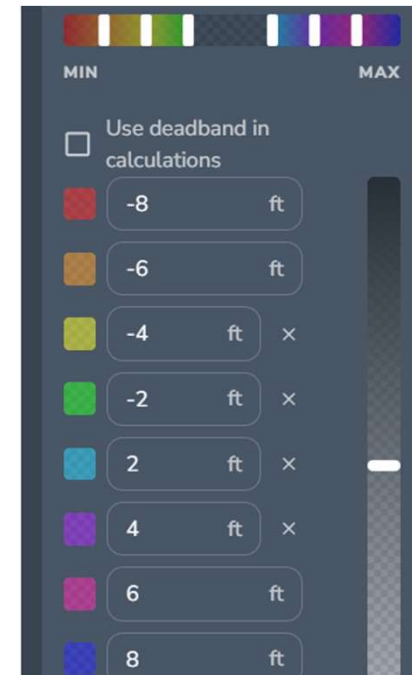
| | | | | | |
|-----------|-----------|-------------|-----------|--------------|--|
| DRAWN BY: | CMM | CHECKED BY: | RVH | APPROVED BY: | |
| DATE: | 4/29/2025 | SCALE: | 1" = 300' | PROJECT NO.: | |

SITE MAP



Z:\Files\Engineers\Waste Connections\Chiquita Canyon LF\12425 Reaction Area Maps\08-August\DWG\Friday Weekly Submit\08-11.dwg Sep 11, 2025 - 8:22am By: smedina

Chiquita Canyon Landfill - Isopach



August 27, 2025 Survey Image. July 31, 2025 vs August 27, 2025