

Archived: Wednesday, August 27, 2025 1:03:12 PM
From: [Kate Logan](#)
Mail received time: Fri, 22 Aug 2025 15:04:56
Sent: Fri, 22 Aug 2025 15:02:31
To: KGork@ph.lacounty.gov
Todd.Thalhamer@Calrecycle.ca.gov khabaradas@ph.lacounty.gov LFrias@ph.lacounty.gov
NQuick@ph.lacounty.gov RRagland@ph.lacounty.gov BMcphillips@counsel.lacounty.gov
Cc: Wes.Mindermann@CalRecycle.ca.gov mark.debie@calrecycle.ca.gov emorofuji@ph.lacounty.gov
Relon.MarkAnthony@epa.gov Holybee.Tyler@epa.gov Friedli.Laura@epa.gov [John Perkey](#) [Steve Cassulo](#)
[Nicole Ward](#) [Dylan Smith](#) [Amanda Froman](#)
Subject: Chiquita Canyon Landfill – Geosynthetic Cover – Mitigation Measure 4.1
Importance: Normal
Sensitivity: None
Attachments: [4050 2025-07-07 Milestone 2B Chiquita Canyon LF Isopach_July 2025.pdf](#) [2025-08-22 - Figure 1 EVOH Location-Layout1.pdf](#) [CLF Reaction Area_Reactive Wells_2025-08-08.pdf](#)

[EXTERNAL SENDER: Use caution with links/attachments]

Below is Chiquita's weekly update on the status of the installation of the EVOH 60-mil geomembrane cover at the Chiquita Canyon Landfill, in accordance with Mitigation Measure 4.1 of the LEA's Compliance Order issued May 1, 2025.

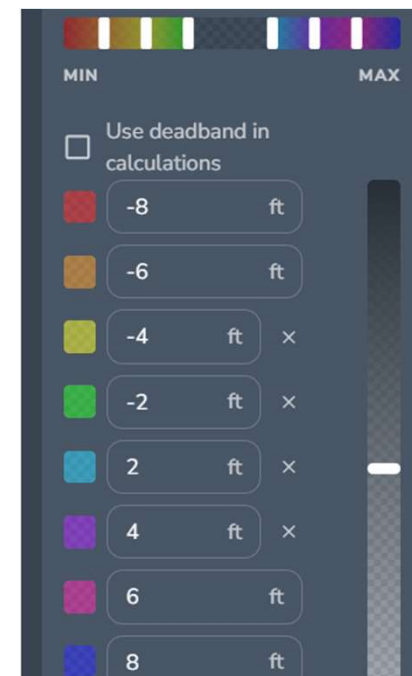
As detailed in our previous updates, on July 21, 2025, D&E, on behalf of Chiquita, deployed two 22.5 ft x 150 ft panels (6,750 square feet) of tan EVOH 60-mil geomembrane on the top deck of the landfill. D&E did not deploy additional panels of the geomembrane cover during the weeks of July 28 or August 4 because the manufacturer's first shipment of EVOH 60-mil geomembrane cover was limited to one roll. Chiquita started to receive additional rolls from the manufacturer the second week in August, 2025. As of August 15, 2025, D&E has installed approximately 66,467 square feet of EVOH geomembrane cover on the top deck of the landfill at the location shown in the attached site map.

The attached site map shows the approximate extent of the geomembrane cover installed as of Friday, August 15, 2025, as well as the geomembrane coverage described in the draft workplan for extension of the geomembrane cover area dated May 16, 2025, and submitted to the LEA and DTSC. Note that Chiquita is developing a revised draft workplan to incorporate a phased installation of additional geomembrane cover in response to comments received from the LEA, DTSC, CalRecycle, and the US EPA. Also attached to this submission are the July 2025 monthly isopach map and a figure identifying wells showing signs of reaction as of July 2025. Due to technical limitations, we are currently unable to create one figure including all of this data.

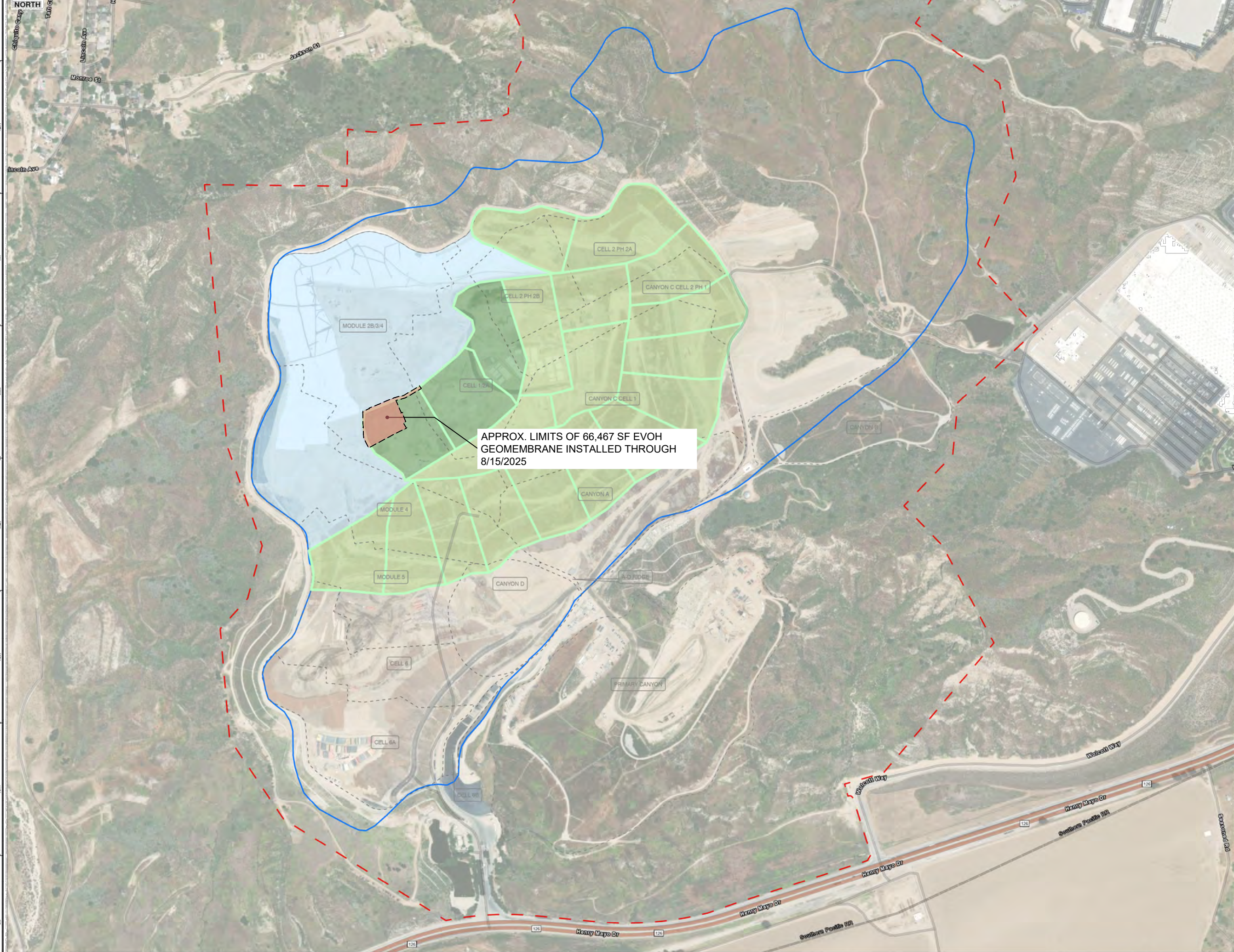
Kate Logan
Regional Engineer
Chiquita Canyon Landfill
29201 Henry Mayo Dr.
Castaic, CA 91384
(m) (346) 807-5547



Chiquita Canyon Landfill - Isopach



July 31, 2025 Survey Image. June 28, 2025 vs July 31, 2025



- CELL LIMIT
- EXISTING GEOMEMBRANE DEPLOYMENT AREA
 - INITIAL SUPPLEMENTAL GEOMEMBRANE DEPLOYMENT AREA
 - SUBSEQUENT SUPPLEMENTAL GEOMEMBRANE DEPLOYMENT AREA

- NOTES:
- EXISTING GEOMEMBRANE DEPLOYMENT AREA IS APPROXIMATELY 48.3 acres.
 - EXISTING GEOMEMBRANE IS 30-MIL HDPE, EXCEPT FOR 1.3 ACRES OF 40-MIL HDPE.
 - EACH PROPOSED DEPLOYMENT AREA IS APPROXIMATELY 5 ACRES
 - NEW GEOMEMBRANE WILL BE 60-MIL HDPE WITH AN INTERNAL CORE EVOH RESIN BARRIER.





Civil & Environmental Consultants, Inc.

2356 Gold Meadow Way
Suite 120
Gold River, CA 95670
Ph: 916.503.0050 • 800.365.1111
www.cecinc.com

CHIQUITA CANYON LANDFILL

DRAWN BY:	CMM	CHECKED BY:	RVH	APPROVED BY:	
DATE:	4/29/2025	SCALE:	1" = 300'	PROJECT NO.:	

SITE MAP

