

**Archived:** Thursday, August 14, 2025 5:59:40 PM  
**From:** [Kate Logan](#)  
**Sent:** Friday, August 8, 2025 9:27:44 PM  
**To:** [KGork@ph.lacounty.gov](mailto:KGork@ph.lacounty.gov)  
[sota@ph.lacounty.gov](mailto:sota@ph.lacounty.gov) [Todd.Thalhamer@Calrecycle.ca.gov](mailto:Todd.Thalhamer@Calrecycle.ca.gov) [khabaradas@ph.lacounty.gov](mailto:khabaradas@ph.lacounty.gov)  
[LFrias@ph.lacounty.gov](mailto:LFrias@ph.lacounty.gov) [NQuick@ph.lacounty.gov](mailto:NQuick@ph.lacounty.gov) [RRagland@ph.lacounty.gov](mailto:RRagland@ph.lacounty.gov)  
**Cc:** [BMcphillips@counsel.lacounty.gov](mailto:BMcphillips@counsel.lacounty.gov) [Wes.Mindermann@CalRecycle.ca.gov](mailto:Wes.Mindermann@CalRecycle.ca.gov) [mark.debie@calrecycle.ca.gov](mailto:mark.debie@calrecycle.ca.gov)  
[emorofuji@ph.lacounty.gov](mailto:emorofuji@ph.lacounty.gov) [Relon.MarkAnthony@epa.gov](mailto:Relon.MarkAnthony@epa.gov) [Holybee.Tyler@epa.gov](mailto:Holybee.Tyler@epa.gov) [Friedli.Laura@epa.gov](mailto:Friedli.Laura@epa.gov)  
[John Perkey](#) [Steve Cassulo](#) [Nicole Ward](#) [Dylan Smith](#) [Amanda Froman](#) [Dylan Smith](#)  
**Subject:** Chiquita Canyon Landfill – Geosynthetic Cover – Mitigation Measure 4.1  
**Importance:** Normal  
**Sensitivity:** None  
**Attachments:** [EVOH Location Site Map.pdf](#) [CLF Reaction Area\\_Reactive Wells\\_2025-08-08.pdf](#) [050 2025-07-07](#)  
[Milestone 2B Chiquita Canyon LF Isopach\\_June 2025.pdf](#)

---

[EXTERNAL SENDER: Use caution with links/attachments]

---

All,

Below is Chiquita's weekly update on the status of the installation of the EVOH 60-mil geomembrane cover at the Chiquita Canyon Landfill, in accordance with Mitigation Measure 4.1 of the LEA's Compliance Order issued May 1, 2025.

As detailed in our response provided on August 1, 2025, the manufacturer's first shipment of EVOH 60-mil geomembrane liner was limited to one roll. Therefore, D&E did not deploy any additional panels of the geomembrane liner during the week of July 28 - and to date, a total of 6,750 square feet of liner has been installed as described in Chiquita's August 1 update. Chiquita continues to expect to receive additional rolls from the manufacturer beginning the week of August 11.

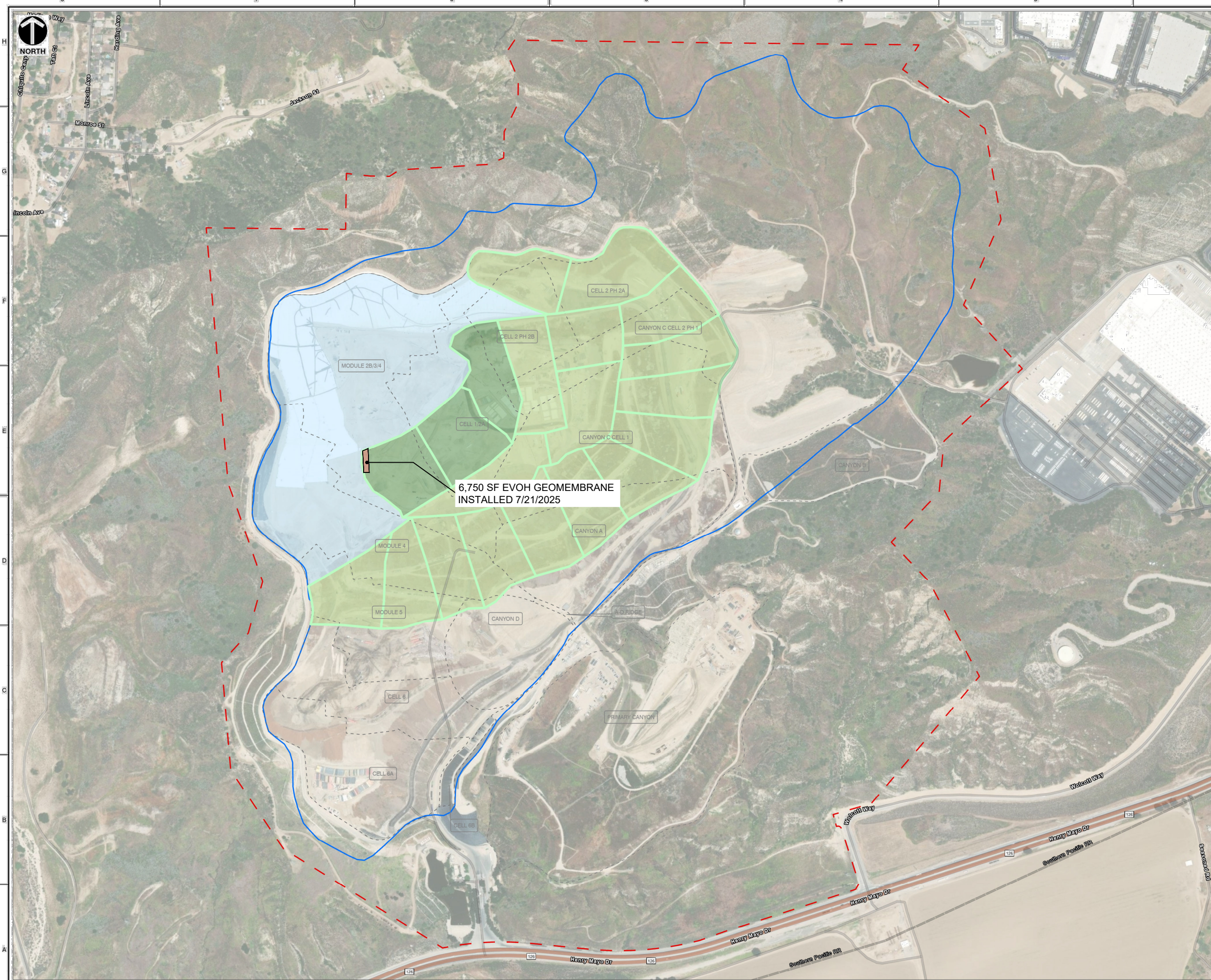
Figure 1, attached hereto, shows the approximate extent of the geomembrane cover installed as of Friday, August 8, 2025, as well as the geomembrane coverage area described in the draft workplan for extension of the geomembrane cover dated May 16, 2025, and submitted to the LEA and DTSC. Note that Chiquita continues to evaluate the planned extension area in response to the agencies' correspondence. Also attached to this submission are the June 2025 monthly isopach map and a figure identifying wells showing signs of reaction as of June 2025. Due to technical limitations, we have been unable to create one figure including all of this data.

Thanks,

Kate Logan  
**Regional Engineer**  
**Chiquita Canyon Landfill**  
29201 Henry Mayo Dr.  
Castaic, CA 91384  
(m) (346) 807-5547  
[Kate.Logan@WasteConnections.com](mailto:Kate.Logan@WasteConnections.com)







**LEGEND**

- - - APPROXIMATE PROPERTY BOUNDARY
- REFUSE LIMIT
- - - CELL LIMIT
- EXISTING GEOMEMBRANE DEPLOYMENT AREA
- INITIAL SUPPLEMENTAL GEOMEMBRANE DEPLOYMENT AREA
- SUBSEQUENT SUPPLEMENTAL GEOMEMBRANE DEPLOYMENT AREAS

- NOTES:**
1. EXISTING GEOMEMBRANE DEPLOYMENT AREA IS APPROXIMATELY 48.3 acres.
  2. EXISTING GEOMEMBRANE IS 30-MIL HDPE, EXCEPT FOR 1.3 ACRES OF 40-MIL HDPE.
  3. EACH PROPOSED DEPLOYMENT AREA IS APPROXIMATELY 5 ACRES
  4. NEW GEOMEMBRANE WILL BE 60-MIL HDPE WITH AN INTERNAL CORE EVOH RESIN BARRIER.

SCALE IN FEET  
0' 300' 600'

**CEC**  
Civil & Environmental  
Consultants, Inc.

2356 Gold Meadow Way  
Suite 120  
Gold River, CA 95670  
Ph: 916.503.0050 • 800.365.2324  
www.cecinc.com

**CHIKUITA CANYON LANDFILL**

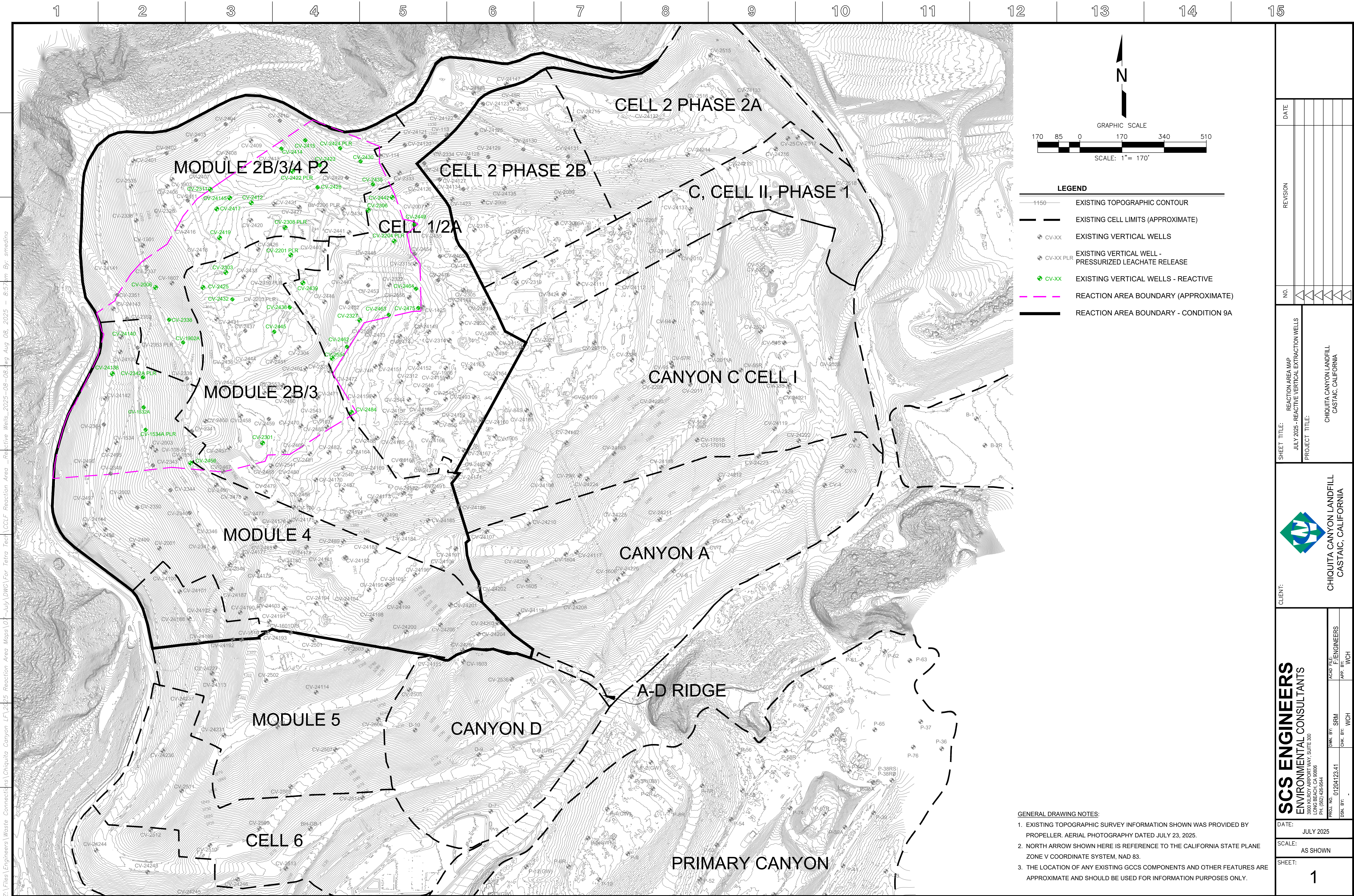
DRAWN BY:	CMM	CHECKED BY:	RVH	APPROVED BY:	RVH
DATE:	4/29/2025	SCALE:	1" = 300'	PROJECT NO.:	350-750

**SITE MAP**

FIGURE NO. **2A**  
SHEET 1 OF 2

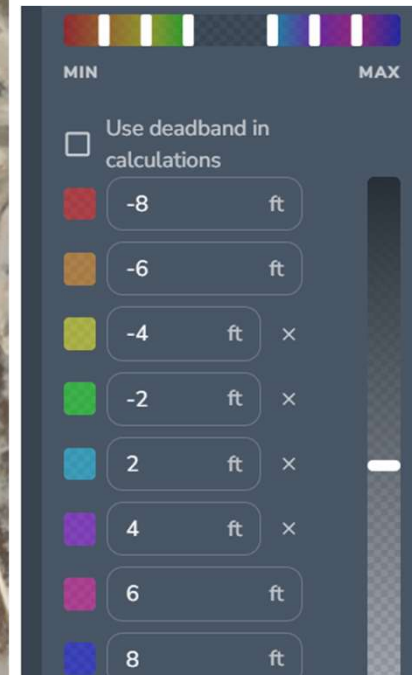
C:\Users\jerry\Documents\GIS\Projects\Chiquita Canyon\2A\Map2A.mxd 4/29/2025 1:22 PM (jerry)







# Chiquita Canyon Landfill - Isopach



June 28, 2025 Survey Image. May 28, 2025 vs June 28, 2025