



JUNE 2007

Zündfolge

Official Publication of the BMW Car Club of America Puget Sound Region



The All-New
2007 BMW X5

www.bmwseattle.com



The Ultimate
Driving Machine®

From the more powerful, more fuel-efficient engine to the roomier and more supple interior, no detail of the all-new BMW X5 was left untouched. As soon as you get behind the wheel, it's clear: we've expanded on a great idea.

Introducing the All-New 2007 BMW X5 SAV We've expanded on a great idea.



2007 X5 4.8i

After seven years of diligence, no detail was left untouched.
Get in and see for yourself.

BMW SEATTLE (206) **328-8787**
714 East Pike Street • Seattle

Special financing and leasing is available on select vehicles through BMW Financial Services. See Dealer For Details

STRICTLY BMW



INDEPENDENT SERVICE

We're committed to providing you exceptional service. And with our team of experienced Master Technicians, we guarantee the quality and accuracy of all of our work.



- BMW Club Discount
- Morning Courtesy Shuttle
- Free Wash & Vacuum w/ Service



2111 140th AVE NE BELLEVUE WA 98005 425.747.6044 WWW.STRICTLYBMW.COM



ZÜNDFOLGE

June 2007

Volume 37
No. 6

Club Website

www.bmwpugetsound.com

Zündfolge Staff

Editor-In-Chief

Lucetta Lightfoot
P.O. Box 99391
Seattle, WA 98139
206-282-2641
lucettalightfoot@msn.com

Production Editor

Alan James

Columnists

Dave Cook
Greg Mierz
Denny Organ
J. Sage Schreiner
Wayne Mulholland

Display Advertising

Jim Millet
206-542-5237
jimngloriamillet@comcast.net

Photographer & Photo Editor

Duane Montagne

National Office

BMW CCA National Office
1-800-878-9292
640 South Main Street, #201
Greenville, SC 29601
Phone: 864-250-0022
Fax: 864-250-0038
Email: bmwclub@aol.com

Join the BMW CCA

http://www.bmwcca.org

Renew your membership

http://www.bmwcca.org

Change of Address

http://www.bmwcca.org

Contact the BMW CCA

http://www.bmwcca.org

Portland ACA Club

BMW ACA Portland Office
P.O. Box 3491
Portland, OR 97208
Phone: 503-287-2697

Postal Notice

Zündfolge (USPS 715-250) is published monthly (except December) by the BMW CCA Puget Sound Region. Office of Publication: 521 5th Ave. West, #103, Seattle, WA 98119. Subscriptions are \$10 annually (available only as part of the \$40 membership fee). Periodicals postage paid at Seattle, WA. **Postmaster**, send address changes to:

Zündfolge
PO Box 1259
Bellevue, WA 98009

Boilerplate

This magazine is the monthly publication of the BMW CCA, Puget Sound Region, and remains its property. All information furnished herein is provided by the membership for members only. Ideas, suggestions and opinions, technical or otherwise, are those of the authors, without authentication by or liability to the editors or the Club.

Zündfolge design and layout by
Paulette Eickman 206.283.1423.

Club Activities 3
The Sun Sets on the M3 9
Motorsports 12

Live to Drive 16
Mformation 19
Classified Marketplace 20

KALENDER

May 31

Board Meeting, starting time is 6:45 p.m. All members are welcome. Contact the Club President to RSVP and for meeting location. Charity presentations for the 2008 Banquet will be discussed.

June 3

Leavenworth Tour. Join the Club Tour to Leavenworth. See the article in this issue, or check the Club Events section of the bulletin board at www.bmwpugetsound.com for details. Please email RSVPs and questions to Scott Hieronymus at scottnlaurie2@comcast.net.

June 5

Deadline for the July 2007 Zündfolge issue, all submissions must be received by this date. Send to the editor at lucettalightfoot@msn.com.

June 9

Dyno Event & BBQ. Begins at 10 a.m. at the Carb Connection located at 13611 NE 126th Place, Ste 240, Kirkland, WA 98034. To RSVP or ask questions contact Jeff Butler at 206-365-1565 or jeff@hauryscollision.com.

June 10

Sixth Annual E30 Picnic, at XXX Root Beer Drive-In, Issaquah, WA. Contact Lance Richert for more information at lance@richertnet.com.

June 23

Griot's Garage Tech Session. Detailing Tech Session at Griots Garage in Fife. Contact Lance Richert for more information at lance@richertnet.com.

June 28

Board Meeting, starting time is 6:45 p.m. All members are welcome. Contact the Club President to RSVP and for meeting location.

July 2

Deadline for the August 2007 Zündfolge issue, all submissions must be received by this date. Sent to the editor at lucettalightfoot@msn.com. (Note deadline is on the first Monday, not Tuesday.)

July 26

Board Meeting, starting time is 6:45 p.m. All members are welcome. Contact the Club President to RSVP and for meeting location.

July 29

Concours d'Elegance at Cedar River Park, Renton, WA. Contact Lance Richert for more information at lance@richertnet.com.

August 7

Deadline for the September 2007 Zündfolge issue, all submissions must be received by this date. Sent to the editor at lucettalightfoot@msn.com.

August TBD

BMW Club Wednesday Night at the Drags, August date to be announced. Doug Mill will run the '57 again. Come join the fun. To RSVP or ask questions contact Jeff Butler at 206-365-1565 or jeff@hauryscollision.com.

August 29

M Car Day at Griots Garage, in Fife. A special day for all M Cars. Details in the July Zündfolge.

August 30

Board Meeting, starting time is 6:45 p.m. All members are welcome. Contact the Club President to RSVP and for meeting location.

BOARD OF DIRECTORS Please limit phone calls to these volunteers to between the hours of 9 a.m. and 9 p.m.

President

Lynne Eskil
206-406-1521 (c)
lynne.d.eskil@boeing.com

Vice President

Alan James
206-300-9314 (h)
alan.james@comcast.net

Secretary

Evie Falkin
206-940-0901 (c)
eviebmw@hotmail.com

Treasurer

David Lightfoot
206-660-6190 (c)
d.lightfoot@comcast.net

Banquet Coordinator

Mary Jo Stojak
206-321-7783
mj@tiggrio.com

Concours Coordinator

Lance Richert
425-644-8009
lance@richertnet.com

Membership Coordinator

Mike Ellis
253-375-6226
ss337@comcast.net

Past President

Rick Gulstrom
425-644-1446 (w)
rick@gmsarch.com

Risk Management

Richard Milham
253-851-5924
rjmilhamlaw@aol.com

Roster Manager

Louis Hesselt van Dinter
425-487-0909
muman@eskimo.com

SIG Coordinator

Ken Hill
425-334-7435 (h)
khill178@earthlink.net

Tech Events Coordinator

Jeff Butler
206-365-1565 (w)
jeff@hauryscollision.com

Tour Coordinator

Scott Hieronymus
206-321-1039 (c)
scottnlaurie2@comcast.net

Track Chief Driving

Instructor
Karl Seeger
425-868-2027
cdi@bmwpugetsound.com

Track Event Coordinator

Tom Olsson
206-890-8616 (c)
dec@bmwpugetsound.com

Web Site Coordinator

Dale Beuning
206-734-6951 (c)
dale@unofficialbmw.com

Zündfolge Advertising

Jim Millet
206-542-5237 (h/w)
jimngloriamillet@comcast.net

Zündfolge Editor

Lucetta Lightfoot
206-282-2641 (h/w/c)
lucettalightfoot@msn.com

CCA Pacific Region VP

Eddy Funahashi
559-583-6768 (w)
559-582-2731 (h)
funa@cnetech.net



Dyno Event & BBQ

June 9

AKA Gear Head Get-together, Bench Racing Session with Proof, or Just All Around Good Time with Car Show and Food

Begins at 10:00 a.m.

IT'S TIME WE GET TOGETHER for round three of "when the rubber meets the rollers." We had a great time flogging our Bimmers last year and checking out just how well those mods really worked (or maybe didn't work). Several of last years' participants are warming up for round three! Last years' top contender put down over 400 hp to the wheels with his 2006 M5. Anyone with a new 335 twin turbo want to check out that new software upgrade? Maybe a few more Pro 3 race cars?

Alex and the guys at the Carb Connection in Kirkland are hosting the Dyno Tech Session for our Club at a discounted rate. Saturday, June 9 we will pay only \$75 dollars (normally \$145) to run our cars on their brand new 4wd dyno. Make up to three runs and get a printout (\$10 to burn a CD) of your car's actual horse power at the wheels as well as air/fuel ratio.

The Club will be providing the BBQ and refreshments around noon. There is plenty of parking on the back side of the building by the dyno room, so whether or not you're going to run your car, join fellow gear heads in having a great time.

RSVP to Jeff Butler at jeff@hauryscollision.com.

*Jeff Butler
Tech Events Chair*



**At the Carburetor Connection www.carbconn.com
13611 NE 126th Place, St 240, Kirkland WA 98034**



5th Annual E30 Picnic (3 Series '84-'91)

June 10

The E30 3 Series ('84-'91) was a truly versatile BMW. In it's seven-year run in the USA, the car came with five different engines, 2-door/4-door and Touring models, rear-and all-wheel drive, hardtop and convertibles! BMW sold boatloads of these cars, and hundreds of our local Club members are still enjoying their fine attributes.

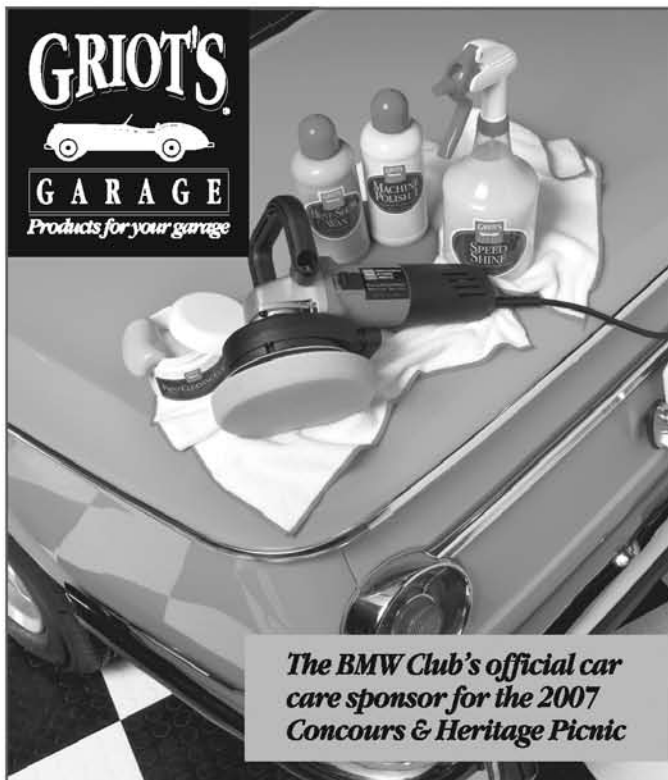
The local NW E30 SIG along with the BMW Club are organizing another E30 Picnic for all E30 owners or admirers. We'll see you on Sunday, June 10 starting at 11 a.m. in Issaquah. We will have special E30s on display, and plenty of opportunities for all E30 owners to share questions and stories. We are planning on 100+ E30s that day; be sure to be part of the fun! All E30s are invited, from garage queens to daily drivers (like mine). Extra E30 parts cluttering the garage? Bring the parts and sell them if you wish. Special E30 themed T-shirts with the famed Bastos race car from 1992 will be available for \$15 each. If you can't make the event, but would like to get an E30 shirt, contact the event chair for more information.

We are happy to be back at the historical Triple-X Drive-In in Issaquah, which has a great burger menu. Bring your appetite and a few bucks and they will make you happy. From I-90 take the Front Street Exit, head south and take a left on Gilman Blvd. The Triple-X will be one block up on the left. Address: 98 NE Gilman Blvd, Issaquah, WA 98027.

Auburn Foreign Car is graciously covering some of the costs for the event and providing raffle prizes. We are asking for a \$7 donation to help cover the additional costs associated with the event. Also providing items for the raffle are: Griot's Garage, Bavarian Autosport, West Werks, Pacific Motorsports and others. It is important for you to RSVP to me so I can better plan for parking and coordination with the Triple-X. I need to know the number of people attending in your car, and what kind of E30 you are bringing (year and type), and your city. See you there!

*Lance Richert
lance@richertnet.com
425-443-2188
'88 M3, '87 325is*





Come Play In Our Garage

Come see what you've been hearing about at our Tacoma store. Enjoy some fun time in our car care school and let our knowledgeable Car Care Specialists demonstrate any of our premium car care products! Stroll through our store and get your hands on the quality GRIOT'S GARAGE merchandise that you've enjoyed in our handbooks. While you're here, check out our garage storage systems and find out how you can have the garage of your dreams.



You'll enjoy getting your hands on our products!

We're located in Tacoma at 3500-A 20th Street East. Call for directions and hours of operation.

800-345-5679

www.griotsgarage.com

Have fun in your garage!



Griot's Garage Car Care Tech Session

June 23

10:00 a.m. till Noon

THIS IS A LAST-MINUTE REMINDER about the pre-Concours Car Care Tech Session at Griot's Garage. Join us for one of the more popular events of the year. For those planning to enter their BMWs in the judged category at the Concours d'Elegance in July, our hosts will present special tips to help you score points!

Griot's Garage recently completed construction of a new Car Care School and R&D garage. They also enlarged their retail store and now carry all of their car care products at the local store. Everything is located at their corporate headquarters in Fife, one half-mile west of BMW Northwest. Griot's Garage will provide a free Car Care product sample to all those attending. Breakfast treats and coffee will be served. Don't miss this fun and informative tech session. *Note: Products may be purchased from their retail store between 9 a.m. and 2 p.m., and on this day only you will receive 10% off those purchases.* A great way to stock up for the year.

This event is free to attend, but for planning purposes, please email RSVP to me at Lance@Richertnet.com. Guests are welcome.

Lance Richert

Griot's Garage, 3500-A 20th St East, Fife, WA 98424
800-345-5789, www.griotsgarage.com

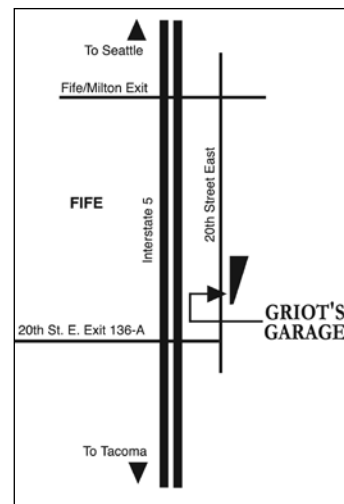
DRIVING DIRECTIONS

From Seattle:

- Motor south on I-5 and take the Fife/Milton exit.
- Turn left at the light and go over the freeway.
- Turn right at the next light onto 20th Street E.
- Continue west about 3/4-mile and turn left into their parking lot.

From Olympia:

- Motor north on I-5 to the 20th Street E. exit, number 136-A. The offramp will take you right.
- At the T-Intersection, turn left on to 20th Street East. Continue east about 1/4-mile and turn right into their parking lot.



This month's cover features a beautiful photo of a PTG M3 at sunset. Team PTG said "Auf Wiedersehn" to the E46 M3 during the final race of the ALMS season at Laguna Seca October 21, 2006.

Photo by Steve Alvine using a Canon 20D at 1/200 sec. at F5.6 at ISO 100.

The Ultimate Drive Shaft for BMW & Mercedes

Precision remanufactured with care exclusively by Driveline Service of Portland



- In Stock for **OVERNIGHT DELIVERY**
- **BEST Warranty in the Industry**
- **5-Year/50,000 Mile - Plus Labor REBATE**

www.driveshafts.com/bmw

800-227-8608



3 layers gloss auto detail

Are you a car enthusiast?

Short on time?

Call for your entire detailing plan.

(425) 301 0790 (ask for Aaron)

3lgautodetail@gmail.com



Pacific Northwest Historics

June 30 and July 1

THE BMW CLUB will once again participate in the Car Corral. There are still a few spots left in the BMW Car Corral. Come out and join your fellow BMW Club members this year at the Nineteenth Annual Pacific Northwest Historics at Pacific Raceways (PR), June 30 through July 1, 2007.

The Pacific Northwest Historics features many of the world's rarest and most beautiful pre-1970 race cars. All proceeds from the Historics benefit the uncompensated care program at Children's Hospital and Regional Medical Center in Seattle.

To participate in the BMW section of the corral, you must register and pay \$25 per day in advance. This \$25 covers the car and driver. Each additional passenger will be charged \$25 at the gate. Reduced price tickets are available for children. The BMW corral has always

had a waiting list in the past, so sign up early to secure a place for your BMW. You may only sign up for one day.

Again, this year there will be judging of the cars in the corral. Corral cars must arrive and be parked in the corral between 8-10 a.m. each day. Corral participants are invited to take part in a parade lap of PR, during lunch each day. We will have a hospitality tent in the BMW corral to promote and answer questions about the Club. We are looking for Club volunteers to help for an hour or so in the BMW tent. If you are interested in helping the Club please indicate this on the registration form. *To register, fill in the registration form and send it with a check and a legal size self-addressed stamped envelope.* If you have any questions, contact Lucetta Lightfoot at lucettalightfoot@msn.com.

2007 Pacific Northwest Historics—June 30 or July 1 (choose one day only)

Name _____

Address _____

City/State/Zip _____

Home Phone () _____ Work () _____

Email _____

Year/Model/Color of BMW you will be driving _____

Volunteer at the BMW tent? ☐ Yes ☐ No

☐ Saturday, June 30 at \$25 **OR** ☐ Sunday, July 1 at \$25 (**one day only**) \$ _____

Please make checks payable to BMW CCA Puget Sound Region.

Send registration and checks to Lucetta Lightfoot, PO Box 99391, Seattle, WA 98139.

IMPORTANT: Please include a legal size self-addressed stamped envelope.

MARK ISRAEL

425-823-4282

INSURANCE WORK WELCOME



13209 NE 126th PL. SUITE 140, BLDG. A KIRKLAND, WA 98034

Concours d'Elegance and BMW Heritage Picnic

July 29

Sunday, July 29, 2006
Cedar River Park, Renton
Sponsored by BMW Seattle

JOIN US for the 27th Annual Concours d'Elegance and Heritage Picnic at Cedar River Park in Renton. This year we are pleased to be included as part of the 24th Annual Renton River Days community celebration coordinated by the City of Renton. Our big show will be part of the many activities for the public to enjoy. Nearby you will find music on two stages, arts and crafts booths, food vendors, an art exhibit, and other activities for the whole family. Mark your calendar for Sunday, July 29. We are pleased to have our show back on Sunday! This will allow you to spend Saturday giving your BMW the spa treatment before rolling out to the Concours on Sunday!

This is a special day for Club members to come together and enjoy each other's company as well as display our BMWs at their very best. There will be two classes to choose from for your BMW. A Judged class, with our famous

Schedule

9:30 a.m.	Begin check in and parking of Judged and Display BMWs
11 a.m.	All Judged and Display BMWs checked in
11:30 a.m.	Judging begins, hands off all Judged BMWs Activities for children Griot's Garage detailing demonstrations
2-3 p.m.	Awards and door prizes (time approximate)

etched glass trophies awarded to the winners. There is also a non-competitive Display class, where you can roll your BMW out without being judged.

Come see the history and beauty that make up BMW's heritage. This event is always very popular with 300-400 people in attendance. We anticipate close to 200 BMWs on display, spanning seven decades. Be sure to be part of this exciting day.

This year we are pleased to welcome the local BMW Motorcycle club. Their members will be displaying BMW motorcycles with us. Expect five decades of motorcycles!

Judged Class

Not sure if you are up for having your BMW judged? We judge only on cleanli-

ness, not on originality. The judging forms can be reviewed on the Club's web site. You must be a member of the BMW CCA, BMW ACA or Canadian BMW CCBC to participate in the judged classes.

Cars are judged in three major areas: Exterior, Interior (including trunk) and Engine Bay. The underside of the car is not judged. Each class is judged by a three-member team whose independent results are then totaled to determine a score. This process is designed to be as fair and objective as possible. For class competition, we have re-instituted bonus points for mileage, which evens out the competition between high- and low-mileage cars. Best in Show is determined by taking the top BMW from each class, and lining them up for a final

BMW Seattle

BMW Service
Original BMW Parts



The Original Dinan Dealer in Seattle
All Dinan performance upgrades available



Short Shift Kits



Performance Brake Systems
Rotors, Calipers, & Complete Systems

Factory Trained Technicians
Your #1 Source for Original BMW Parts
10% Club Discount
on BMW Parts & Labor

Original
BMW Parts



The Ultimate
Driving Machine®

BMW Seattle 714 East Pike Street bmwseattle.com 206.328.8787

BMWUSA.com

review by a three-judge team. Previous scores are not considered as the judges choose the cleanest, most dazzling BMW on the lawn.

Display Class

The Display Class is a terrific way to take part in the event for those who don't wish to compete but want to come and show off their car. Just wash it, clean the wheels, and you'll be good to go! You'll be parked with the judged cars in your class. All participants will receive a Griot's Garage sample kit, commemorative 11x17" poster, cool refrigerator magnet and chance to win raffle prizes during the day.

Thanks to our Sponsors

Our event this year is once again being sponsored by a generous donation from BMW Seattle. Next time you are at the dealership, be sure to thank them. BMW Seattle is providing the beautiful glass trophies as well as a new BMW Cruise Bike valued at \$800 for the raffle. Griot's Garage will also be in attendance as the official Car Care Sponsor of our event. Griot's Garage will be providing gifts for participants, raffle prizes, and will have representatives on hand demonstrating how to use their products. Griot's Garage will present a special Preservation Award for the BMW that is best preserved without a restoration.

Children's Activities

We will have a special tent with activities for kids including a coloring project. Renton River Days will have other activities for kids nearby including pony rides.

Featured Car: E36 M3

The featured car this year is the BMW E36 M3 (1995-1999). There will be a special class for the M3s and special trophies for those entering the judged class. Please consider bringing your E36 M3 out, in whatever condition it is in. The more the merrier! Dozens of these fabulous cars are anticipated this year.

Volunteers Needed

This event requires many volunteers to spend part of the day helping make the event a success. We need people to judge cars, help with check in, coordinate parking cars, help in the children's tent, etc. If you can help, contact event chair Lance Richert at 425-644-8009 or Lance@RichertNet.com.

Costs

Costs are the same as last year; see the registration form for specifics. Our Canadian friends may pay \$10 less to compensate for their dollar. It is our way of saying thanks to them for making the extra effort of coming down. Register early to secure your spot.

Lunch and Snacks

We are pleased to have 3B's BBQ serving food this year. See the separate side bar for details. Bring some extra cash to keep your hunger at bay!

Cedar River Park

**Just East of I-405 in Renton
1717 Maple Valley Hwy & House Way**

DRIVING DIRECTIONS:

From I-405 South:

- Take Exit 4 (Maple Valley exit). This will take you onto Sunset Boulevard NE.
- Go left at the second signal light (this is Maple Valley Road, Highway 169). Get into the right lane, travel a short distance, and turn right into Cedar River Park.

From I-405 North:

- Take Exit 4A (Renton/Maple Valley exit).
- Turn right at the end of the exit onto Highway 169, Maple Valley Highway. Get into the right lane, travel a short distance, and turn right into Cedar River Park.

Concours d'Elegance BBQ

COME ONE, COME ALL, if not for the cars then for the food. How about a summer BBQ social?

The Concours d'Elegance is a perfect time to get together with Club members, enjoy cars and this year we are incorporating a BBQ lunch. Lance and I had a chance to sample the food and boy was it tasty. You don't need to enter your car; just come out and enjoy the food, cars and people.

Award winning 3B's BBQ is a local BBQ catering company from Renton and will be there to fill your tummy and quench your thirst.

I've arranged the following menu:

\$5.00 Combo meals include sandwich and water or soda:

- 1/4 lb Ballpark Frank
- Pulled Pork Sandwich
- Chopped Beef Brisket Sandwich

\$6.00 Combo meal includes sandwich and water or soda:

- Redhook Griller Bratwurst and Grilled onions.

\$5.00 Bratwurst's and Grilled onions without a beverage

If you have any questions regarding the food portion of the event, please contact me at 206-295-3663 or de_annaj@yahoo.com.

de-Anna Martin

27th Annual BMW CCA Concours d'Elegance

Name: _____ BMW CCA #: _____

Address: _____

City/State/Zip: _____

Phone: (____) _____ Email: _____

BMW Year/Model: _____ License #: _____

Special Features: _____

Volunteer at the BMW tent? ☐ Yes ☐ No

Comments: _____

☐ Judged Class \$30 (\$40 after 7/23) ☐ Display Class \$20 (\$30 after 7/23)

☐ Display Class, nonmember \$30 (\$40 after 7/23)

Credit Card: ☐ Visa ☐ MC Card Number: _____ Exp (MM/YY): _____

Name on Card: _____

Signature: _____

AMOUNT TO CHARGE _____

If paying by check make checks payable to BMW CCA Puget Sound Region. Send registration to Lance Richert, Concours, 6240 127th Avenue SE, Bellevue, WA 98006.





BMW Seattle is donating as a raffle item a BMW Cruise Bike, valued at \$800. The bike's ergonomic, distinctive design delivers a sleek look for leisurely riding.



GROUP 2
MOTORSPORTS
Suspension Specialists

2007 BMW Club Concours d'Elegance Classes

Class #	Class	Models	Years
01 display only	Pre-War	All	1928-1941
02 display only	Post-War	501,502,503,507,3200CS	1952-1965
	Old Range	Isetta, 600, 700	1955-1965
03	Vintage Cars	1502, 1602, 1802, 2002	1966-1976
		1500, 1600, 1800, 2000	1962-1972
		E3 2500,2800,Bavaria	1968-1977
		E9 2000CS, 2800CS, 3.0CS	1965-1975
04	Early 3 Series	E21 3 Series, First Generation	1977-1983
		E30 3 Series, Second Generation	1983-1991
05	Early Big Cars	E12 5 Series, First Generation	1972-1981
		E28 5 Series, Second Generation	1982-1988
		E26 M1	1978-1981
		E23 7 Series, First Generation	1977-1987
		E24 6 Series	1976-1989
06	Modern 3 Series	E36 3 Series, Third Generation	1992-1999
07	Recent 3 Series	E46 3 Series, Fourth Generation	1999-2005
		E83 X3	2004-current
		E90 3 Series, Fifth Generation	2006-current
08	Modern Big Cars	E34 5 Series, Third Generation	1989-1996
		E32 7 Series, Second Generation	1988-1994
		E31 8 Series	1990-1997
09	Recent Big Cars	E39 5 Series, Fourth Generation	1997-2003
		E60 5 Series, Fifth Generation	2003-current
		E38 7 Series, Third Generation	1994-2001
		E65 7 Series, Fourth Generation	2002-current
		E53 X5	2004-current
		E63 6 Series	2005-current
		E70 X5	2007-current
10	Z Cars	Z3, Z4, Z8, Roadsters and Coupes	1995-current
11 display only	Mini		2002-current
12	E36 M3	E36 M3 (Featured Car)	1995-1999

Suspension Upgrades

- Coil-over kits
- Shocks/sway bars
- Poly bushings
- Corner balancing

Alignments

Brake Kits



4442-B 27th Ave West
Seattle WA 98199
206 378 0900
www.group2inc.com

The Sun Sets on the M3

by Steve Alvine

AFTER ELEVEN YEARS, FOURTEEN CHAMPIONSHIPS, AND NUMEROUS POLES AND PODIUMS, Team PTG hung up the gloves on the venerable M3. The saga came to an end last October with a mid-pack finish at the season-ending ALMS race at Laguna Seca. Laguna Seca has always been on my wish list of tracks to drive, but this time I had to settle for photographing a race. I'm sure I'm not getting a lot of sympathy here.

After arriving in Sacramento on Thursday morning, I picked up a car and made my way over to the coast. I arrived in Monterey a little later than I planned, so by the time I picked up my credential for shooting, I was too late to get my lovely blue photo vest which allowed me trackside access. No worries, I grabbed my camera and headed on a little reconnoiter to check out the facility. Practice sessions are pretty casual, so I made my way down to pit lane and took some shots of the teams in a more relaxed state than is normal for race day. One thing I learned from not having trackside access was that you really can get some different perspectives when forced to shoot from other locations. One of my favorite shots is of a Corvette from the inside of

turn 5 as the sun was setting. Safe to say I would not have been in that location if I had my vest.

The next morning, on Friday, I was at the track early for the photographers meeting. This is a normal event for media so the track officials can get a chance to cover last minute rules and safety issues as well as let us know if there are areas where we are not allowed to go.

With that out of the way, it was time to get to work. Friday consisted of practice and qualifying sessions for Star Mazda, Speed GT, Touring cars, Porsche Cup and of course ALMS. Needless to say I was making good use of all the memory cards I brought along. Once my cards were loaded it was off to the Media center to download and get a little lunch. After lunch I hooked up with some other photographers I know and hitched a ride on their golf cart. What a difference that makes. The afternoon consisted of more of the same as in the morning in a never-ending quest for the perfect light. By the end of the day we were ready for a good meal. The other guys know the good spots to eat so we headed into Monterey for a great Mexican meal that's hard to find elsewhere.

Saturday was race day and again I was at the track early for another meeting. Once that was done it was time to go over the gear. I made sure all the batteries were charged and the image sensor was as clean as possible. I also made sure the flash cards were all empty and accounted for. I learned early on that in this line of work you can never have too much memory. Some of the cameras shoot at eight frames per second, so you can imagine how quickly they can fill a flash card.

A personal highlight for me was getting a little time to talk with Bill Auberlen during the autograph session. I had along a few issues of our famous October *Zündfolge* with Bill on the cover. He was gracious enough to sign a few and even asked if he could keep a couple for himself. As dreams of working as Bill's photographer were dancing through my head, he introduced me to his father standing nearby, all decked out in his photographers' vest and camera gear hanging around his neck. What a cruel joke fate was pulling when the best "in" I had has a dad who is a credentialed ALMS photographer. Go figure.

I started the race shooting the start at turn 2 where I was hoping to see a little late

braking and some action, but everyone behaved themselves. I continued on around the track with stops at 5, turn 8 "the corkscrew," and then turn 11 before heading to 6 where the cover shot was taken just as the sun was setting. I wish I had taken a shot of all the photographers crowded around the holes in the fencing trying to get their shots. You would have thought Miss Universe was on the other side of the fence.

Plagued by mechanical issues and a horsepower deficit to the Porsches, 2006 was a tough season for Team PTG. Laguna was no exception with the 22 car going out on lap eighty after a collision. Bill and Joey in the 21 car finished eighth in pit lane after a late-race engine misfire caused them to come in for repairs. It made me long for the GTR of the 2001 season when Porsche was running for cover. Of course we did so well that year that IMSA took a closer look and realized that there were no V8 powered M3s on the street. Oops. I'm sure Porsche couldn't have cared less if THEY were winning that season.

Next year should be a different story now that the M3 will be powered by a V8. P-cars check your mirrors.

Bellevue Motor Works

We Specialize In Quality Service Of BMW
And Other European Automobile Repair.

Quality Workmanship, Competitive Pricing
Factory Parts & Integrity Included!

Open Six Days!

(425) 746-7141 www.bellevuemotorworks.com
1630, 136th Place N.E. Suite C Bellevue WA 98005

AUTOHAUS-VICK INC.

Monday-Friday
7:30am - 5:30pm

14121 N.E. 24th
Bellevue, WA 98007
(425) 644-7100

ASE CERTIFIED
BOSCH SERVICE
Approved Auto Repair
Featuring Repair of BMW



Mazda Raceway Laguna Seca



Penske dominated LMP2 with an one two win.



"One of my favorite shots from the weekend." Steve Alvine



Getting ready to head down the front straight as the sun sets.



The start of the Sunday Speed GT race.



The sound of the Aston needs to be heard to be believed.



Friday practice coming out of turn 4.



An unabashed plug for Bosch.



Off we go into the wild blue yonder.



Seth Thomas makes his way through the corkscrew.



PTG M3 with a Porsche following.



The world famous corkscrew.



Speed GT Porsche exiting the corkscrew.



Audi again showed that not much can stop it.

MOTOR SPORTS



IT'S JUNE, AND BELIEVE IT OR NOT, IT'S TIME TO REGISTER FOR YET ANOTHER EVENT. We'll be opening registration for the Friday, July 13 school at Pacific Raceways on June 1. The price is \$200, and includes lunch. I have a very detailed description of our program and what's required to attend on the website, but here's a quick list. If you have questions for which you can't find the answers, please don't hesitate to email me.

Requirements

- You must be a Club member. We also honor PCA, BMW ACA, and BMW CCBC memberships.
- You must be 18 years old with a valid driver's license.
- A car control clinic is a prerequisite for our schools at Pacific Raceways. If you have prior experience with a different organization, please list that on the application, and I'll be happy to consider it.
- Tech inspections are required and must be dated within thirty days of the event. The form can be downloaded from the Club website (a link to it will also be in the confirmation email Eric sends you). A certified technician

must perform these inspections. You may use your usual shop or see the Club bulletin board for a list of shops that have agreed to perform tech inspection at a special CCA price.

- Helmets are required. You'll need to have a Snell 2000 or newer helmet for this school. If a helmet is Snell rated it will have a tag inside the liner indicating the Snell year. If you have a question about this, ask your equipment provider.
- Convertibles are not allowed.

Directions to Pacific Raceways will be provided in your confirmation packet. Information about what to bring to the track and how to prepare your car for the day will be provided via the confirmation email. Your track committee looks forward to meeting you and helping bring about a fun and rewarding experience. All you need to get the ball rolling is to fill out the registration form and mail it in with a check. It can be downloaded from the Chapter website www.bmwpugetsound.com on the driving school page.

See you out there!

Tom Olsson
olssons@seanet.com

2007 Driving Events Calendar

BMW CCA PSR Events:

July

13 Driving School at Pacific Raceways

September

8 Driving School at Pacific Raceways

October

13 Car Control Clinic at Bremerton

Other Events open to CCA Drivers:

June

3 ALFA School in Bremerton

4 BMW CCBC School at Mission, BC

22 PCA School in Seattle

22 Tri-Club School in Portland

23-24 BMW CCA IEC Car School in Spokane

27 BSCC Lapping Day in Bremerton

30 PCA Car Control Clinic in Bremerton

July

26 ALFA School in Seattle

August

2 PCA School in Seattle

3 BMW ACA School in Portland

10 BSCC Lapping Day in Bremerton

11 PCA Car Control Clinic in Bremerton

16 ALFA School in Seattle

31 BSCC Lapping Day in Bremerton

September

1 PCA Car Control Clinic in Bremerton

13 ALFA School in Seattle

16 BMW CCBC Car Control Clinic at Pitt Meadows, BC

27 PCA School in Seattle

Contacts:

BMW CCA Inland Empire

www.iebmw.org
Scott Adare: sadare@aol.com

BMW ACA, Portland

www.bmwacaportland.com
Greg Meythaler: greg.meythaler@intel.com

BMW Car Club of BC

www.bmwccbc.org
Rolf Drommer: schools@bmwccbc.org

Bremerton Sports Car Club

Dave Ely: de2mr2@msn.com

NW Alfa Club

www.nwalfaclub.com
Dave Kingstone:
dave.kingstone@baesystems.com

Porsche Club

www.pnwr.pca.org
Jana Swan: DriverEd@pnwr.org

www.bmwpugetsound.com

Carb Connection Inc. DBA

425.820.1871

13611 NE 126TH PLACE STE 240
KIRKLAND, WA 98034

DYNORUN 015 Max POWER = 523.10

www.rpmtuner.com

Track Inspection \$35

ECU/Reprogramming

Brakes - Clutch - Exhaust

RMS - Superchargers / Aftercooler

Engine Services Upgrades / Repair

Maintenance Service At Competitive Rates

Active Autowerke Distributor Install Facility

DYNO Services - Engine Datalogging - All Makes

Wir Sprechen Deutsch

Dynojet

BMW NORTHWEST

BMW Northwest
4011 20th Street East
Tacoma, WA 98424
www.bmwnorthwest.com
Ph.253-922-8700
1-800-225-2022
info@bmwnorthwest.com

**The Northwest's only family
owned and operated
dealership since 1968**



Original
BMW Parts



bmwnorthwest.com
1-800-225-2022

**The Ultimate
Driving Machine®**



DINAN
*Authorized
Dealer*

Sales Rep James Barlow
james@bmwnorthwest.com

All Club Members Welcome



How do you want to drive ?

PRO-3 Announces Toyo Tires as Series Sponsor



PRO-3 has added Toyo Tires as a series sponsor. The PRO-3 class has been running the Toyo RA1 as their specification race tire since the inception of PRO-3 in 2002. PRO-3 has grown from four cars the first year to anticipated grids of twenty cars for the Pacific Raceways races this year. PRO-3 will run a full 13-race schedule as part of ICSCC, competing at tracks in Seattle, Portland, Spokane and Mission, BC.

Stan Chen, Manager of Motorsports and Events for Toyo Tires stated: "The Toyo RA1 has been the spec tire for the PRO-3 series since their inception in 2002. As we've watched the PRO-3 series grow, Toyo Tires is pleased to come on board this year as the series sponsor for 2007."

Payouts from Toyo Tires will be in the form of "Toyo Bucks" which can be redeemed for additional RA1 race tires. The size of the payout is based on the number of PRO-3 cars entered in each race and will be awarded as a raffle prize to one of the entrants. Each PRO-3 competitor who takes the green flag is eligible to win the Toyo Bucks

raffle for that race. The breakdown for each race will be:

1-5 cars:	\$100 Toyo Bucks
6-10 cars:	\$200 Toyo Bucks
11-15 cars:	\$300 Toyo Bucks
16-20 cars:	\$400 Toyo Bucks
20+ cars:	\$500 Toyo Bucks

Lance Richert, PRO-3 liaison to Toyo said: "The PRO-3 drivers are really excited to have Toyo on board with us this year. This is a spec class, and we all race on a budget. Last year PRO-3 averaged ten cars per race, this year we think we'll have a few more each race. Toyo's support will help stretch everyone's racing budget a little more."

Spring Tours Recap

TWENTY-THREE BIMMERS, and 42 people took part in the Port Townsend Tour on March 25. On and off drizzle turned into a pretty nice day, with at least one brave Z4 owner going topless the whole way. We introduced a few noobs to the roller-coaster-like Dash Point Road, took in the sights of the beautiful Tacoma tide flats, and got a chance to view the new Tacoma Narrows bridge construction on our way across. Down and around the back side of Hood Canal to a stop for fresh oysters at The Hamma Hamma Store. Rolling into Port Townsend, we were surprised to find ample parking close to our lunch stop. The fantastic turnout kind of overwhelmed the smallish restaurant we had chosen, so we split the group in two. Most of the group enjoyed Fins Restaurant, overlooking the water in downtown Port Townsend. They had a nice menu for us, preprinted with BMW Puget Sound Region on the cover; nice touch. After lunch, we split into smaller groups, based on return route choices.

Twenty-six cars, and 49 people attended our half day tour of the Cascade Foothills. Our original plan was to drive the back roads of SE King County for a couple of hours, then have an early lunch at the historic Black Diamond Bakery. Well, the larger than expected turnout (see a pattern here?) meant

that we couldn't squeeze everyone into the restaurant. We split into three smaller groups, with most following the original, planned route, and one group forging out on their own. Thank you to Larry Kangley and Alan James for leading their respective groups. Thanks also to Marty, since most of the route was shamelessly stolen from a tour he planned a couple of years ago.

The half day tour thing turned out to be very popular. People seemed to enjoy being able to get in a morning of driving, and still have the rest of the day to mow the lawn, or do whatever. We will plan more of these in the future.

Please check the *Zündfolge*, or the Club Message Board for the tour schedule, and join us for one of the remaining tours.

Scott Hieronymus

Driven to Perfection.
Since 1979.

**15% Off
FOR CLUB
MEMBERS!**

German Car Specialists Inc.
service & repair

"Your best alternative to the dealer."

BMW

425.644.2799
Factoria • www.germanauto.com

Haury's Collision Repair/ Consumer Rights Tech Session Recap

THIS PAST April 28 Jeff Butler and Zac Underwood, BMW Club members and owners of Haury's Collision along with Rich Milham, BMW CCA PSR Risk Management Advisor conducted a top notch clinic on automobile collision repair and insurance claims. Jeff and Rich's outstanding presentation highlighted the many challenges confronting consumers today when having their vehicle repaired after a collision, mediating issues arising between the consumer and the insurance company and injury claims. Very informative handouts were provided as well as gift cards to Lombardi's Italian Restaurant.

Several Club members' BMWs were on display (including my own) that were previously repaired by Haury's. Also, several Club members shared stories about their past claims experience highlighting the importance of the information covered at the tech session. At the end of the session, Porsche club driving events chair Bill Bauer furthered the discussion on driver's school vehicle damage and provided some tips on handling damage to your car.

A new 335cic hard top convertible (read drop dead gorgeous car), presented by BMW Seattle and showcased by Client Advisor, Winter Woods, was displayed for Club members to check out and drool over.

Some of the topics covered during the shop tour:

- Celette dedicated fixture structural repair equipment. The Celette Sevenne System uses rigid fixtures developed from vehicle manufacturer blue prints and is required by BMW, Audi, Porsche, Volkswagen, Volvo, Jaguar, and Mercedes Benz for structural repairs. This system realigns the vehicle on the repair bench and only applies realignment forces to the damaged area. When replacing structural parts the fixture ensures exact placement of the new components. (www.celette-na.com)
- True Point Sonic electronic measuring system. What is the difference between universal measuring/realignment systems and Celette?
- Color matching using Glasurit's color match system.
- BASF's BMW specific product provides UV protection throughout the thickness of the clear coat (unlike the competitors products) and complete bonding between coats of different materials to create one continuous film.



Photo by Alan James.

Some highlights covered during the consumer rights seminar:

- Why and how you should choose a BMW approved repair shop and protecting your warranty.
- Specific steps on how to successfully manage an insurance claim.
- Why you should never have oral conversations with an insurance claims adjuster. Get everything in writing to protect yourself.
- Tips on purchasing insurance policies with a written guide on policy language to avoid.
- Insurance companies recommended due to their more favorable policy language and better claims handling practices.
- Drivers school damage to your car? Covered or not?
- Diminished Value, what is it and when are you owed.

Although not covered during the tech session, I understand that Haury's is one of two repair facilities in Seattle approved by BMW to perform structural repairs on BMWs possessing aluminum components such as the E60 5 and 6 series and new X5.

Thanks again to Club members Jeff Butler, Zac Underwood and Rich Milham for being such generous hosts and dedicated Club supporters.

For questions regarding the topics covered or help with a claim, contact Jeff Butler at jeff@haurycollision.com or 206-365-1565 or Rich Milham, Attorney at Law, by phone at 253-851-5924 or email at rjmilhamlaw@aol.com.

Rick Gulstrom, Past President

M-CARS for enthusiasts by an enthusiast.

Matt LaCross

206.579.2662

M-CARS Sales & Consignment (LLC)

4905 Aurora Avenue North | Seattle, WA 98103
email: matt@m-carsseattle.com | website: m-carsseattle.com

NORTHWEST EUROPEAN
a u t o w o r k s

360.715.3876

Bellingham, WA

Check out our
website for
NEW/USED PARTS



Call now to
schedule your
TECH INSPECTION

Independent repair and service of

BMW & MERCEDES

www.nweuropean.com





The Blessing and Curses of the E38 Radiator

IT WAS A MORNING LIKE ANY OTHER except that I was leaving Mukilteo after a stay-over from a meeting the previous day. Remember I don't live in this neck of the woods; I live on the sunny side of the mountains.

As I plod my way east on SR-426 to south I-5, I am thinking of all the things I have to get done on this day. I enter I-5; my right foot starts to get anxious with the onslaught of merging traffic. Just as my foot gets comfortable with the merge I see a grey haze coming from under the hood along with the all-too familiar odor of coolant.



You never think it is going to happen to you; I mean, you read about it and sort of plan for it but it won't happen to you, right?

This all takes place within a very few seconds and immediately I know what is happening; it is the E38 radiator curse. I immediately pull to the side of the road and shut it down. You never think it is going to happen to you; I mean, you read about it and sort of plan for it but it won't happen to you, right?

Well, thank God I have read about it many times and heard the horror stories of blown head gaskets and all that entails, so shut it down I did, and I mean fast!

After getting out of the car and inspecting under the hood my intuition was correct. The radiator was broken at the neck and coolant was all over my beautiful engine.

Now, what do I do? "Don't panic," I tell myself, "this kind of thing happens all the time to better people than me."

Now, what do I do? "Don't panic," I tell myself, "this kind of thing happens all the time to better people than me." As I have stated before, I consider myself a fairly knowledgeable BMW guy and I should be prepared for such things, but I have to tell you I was a little shaken up.

Okay, that covers the curse, now let's talk about the blessing. Not being from around these parts I was not sure how to proceed. If I were on the East side I would know exactly what to do and who to call; I have Hahn BMW on speed dial. So the first thing I do is call my friends (who know me by name) at Hahn; they do some quick research and give some numbers to call.

Within about an hour the 740 is being off loaded from a flat bed at BMW of Bellevue. I called them at 7:30 a.m. and they gave the name of a tow company to call that knew exactly what to do and where to go.

As I recount the tale of woe to Alison Schuch (an excellent service advisor), she goes to work straight away at getting me into the system and ultimately into the shop within less than a half hour of arrival. This kind of service is very rare.

Once she heard that I was a stranger in this part of the world and was stranded, she went to work to make my day a little less stressful.

The entire experience at the dealership was not only wonderful but methodical as well. They really have their system down to a science. I was taken into the shop to meet the technician who would be working on my baby and he explained everything he was going to do.

Allison made sure I was comfortable and had a place to hang out while my car was being worked on, even down to making a data jack hot so I could work while my car was being cared for.

So let's re-cap. You hear of other individuals experience with the dreaded E38 radiator curse and think it will never happen to you. Also you hear of other individuals experiences with wonderful dealerships and great service and hope that someday when you need it, it will happen to you.

Take heed of my tale and get that radiator proactively changed out to completely avoid this situation. But if it should happen to you, I hope you are fortunate enough to be around such wonderful people who ultimately make the dealership what it is.

Dave Cook

Davecook@liv2drv.net

www.liv2drv.net

PATRICK MILLER

OMNI

BRAKE & ALIGNMENT, Inc.

*"25 years of
precision automotive
service"*

11908 - 124 Ave. NE
Kirkland, WA 98034
(Totem Lake)

425-823-1511



4105 228TH ST SE • BOTHELL, WASHINGTON 98021
MARK LOVITT - OWNER
206.250.9651

WEBSITE: WWW.LOVITTMOTORS.COM
EMAIL: MARK@LOVITTMOTORS.COM

Specializing in BMW Motorsports

Hart Collection Meeting

WE TRIED A SUNDAY AFTERNOON Club meeting and it proved to be popular. But perhaps it was the setting: the beautiful Hart Collection. On March 11, we had about 250 members and guests come by to see this eclectic collection of cars, fossils, meteorites, models and the facility itself. There really was something for everyone. We had probably a seventy year age range amongst attendees and everyone went away happy. Some of the displayed cars are vintage raced, so come out to Pacific Raceway in July and you'll see some of them in action.

Thanks to curator Tony Garmey and the Hart family for the chance to visit this incredible private collection.



Photos by Matt Atkins.

BMW Original Parts
& Factory Trained
Technicians

bellevuebmw.com
1-825-643-4544

The Ultimate
Driving Machine®

Bellevue
BMW

MUNICHMOTORWORKS.COM

BMW PERFORMANCE RESTORATION RELIABILITY



2313 NW ELEVEN MILE AVE
GRESHAM OREGON 97030

503.489.1999

www.munichmotorworks.com

Auburn Foreign & Domestic, Inc.

(253) 833-8161 - (253) 872-0085 - 725 Auburn Way North - Auburn, WA 98002

Factory Scheduled Maintenance • Pre Purchase Inspections
Racing & Sports Performance • Factory BMW Diagnostic Equipment
A.M Shuttle Service • Wireless Internet Access
18 Month Unlimited Mileage Warranty

Parts and Service

Serving You Since 1968

Hours: M - F 7:00AM - 5:00PM

BMW Club Discount



Lance & Stephanie Richert's 1988 Pro-3 325i

Visit us at: www.AuburnForeignCar.com

Mformation

SPRING FEVER: BMW TURNS UP THE HEAT WITH DRIVING SCHOOL UPGRADES

Spring is in the air at the BMW Performance Center and Performance Driving School with updates to existing courses and exciting new driving school offerings. Additions include a track extension adding a different dimension to the high-performance M School that rivals popular race tracks, an "other-roads" course to showcase the capabilities of the X5 Sports Activity Vehicle, and the return of BMW on Location. A totally new complement of motorcycle courses will also debut later this summer.

"The updates and improvements we've made to our numerous offerings this year will captivate the customer. There's something for everyone - BMW owner or not," says David Trimble, manager of driving programs and events for the BMW Performance Center.

"High performance courses like the M School simulate race track driving while teaching advanced car control and safety skills. Our other-roads track enhancements are phenomenal with gravity-defying angles that will dispel the myth that a luxury brand like BMW isn't made to get dirty."

In With The New: Exciting Upgrades For 2007

The ultimate driving experience has gotten even better with the extension of the track at the BMW Performance Driving School, already known for its course that can be configured 35 different ways. The new 1.5 mile long track offers a half-dozen more configurations with a true race track feel that allows for more high speed approaches and

slower technical turns simulating a multitude of driving conditions.

In addition to the new driving school updates, programs such as the Performance Center Delivery will continue throughout 2007. The complete experience provides an introduction to the BMW brand and heritage. During a one-on-one session with a knowledgeable BMW delivery specialist, owners receive a personalized and thorough introduction to their vehicle. Every aspect of the BMW ownership experience is reviewed, from vehicle warranties and maintenance to safety features and controls. Following an in-depth overview of their BMW, owners receive a hands-on driving session. The package is complete with a visit to the BMW museum (subject to availability), overnight accommodations at a local first class hotel and dinner for two.

For more information, pricing and to reserve your seat behind the wheel at BMW Performance Center Driving Schools, call 888-345-4BMW (4269) or visit www.bmwusa.com/bmwexperience/performancecenter.




RACE CAR RENTALS
TURNKEY CARS
RACE CAR PREP
TRACKSIDE SUPPORT
DRIVER COACHING

RACE WITH A
PROVEN, EXPERIENCED
TEAM. WE OFFER ARRIVE
& DRIVE RENTAL PROGRAMS
FOR THE EXPERIENCED & NOVICE
DRIVER IN A BMW PRO-3 AND MORE.

Come see why it's called the
Ultimate Driving Machine...

TCMOTORSPORTS

WWW.TCMOTORSPORTS.NET | INFO@TCMOTORSPORTS.NET



**ULTIMATE
DRIVING
MACHINE**

Reliable and honest
Factory-trained
Major service
Exhaust systems
Brakes
Clutches
Suspension work
Engine replacements



Tom Garman
BMW Technician

Pete Jackson
Service Consultant

(425) 823-1212
13635 NE 126th Place, Kirkland, WA 98034



CLAS\$IFIED

MARKETPLACE

BMW's for Sale

2001 M5: Silverstone, black leather napa heritage, wood trim, badge delete, all the usual trimmings of an M5 plus M Audio. One owner, no smoke, garaged until displaced by current everyday vehicle. 66,500 miles. Recent buyers inspection at Strictly BMW in preparation for sale. Oil replaced every 4-6k miles. \$31,500 firm. Contact Rich Satre at 425-576-9309 or fly2low@verizon.net.

1999 528i: Black on black, 107,000 miles, single owner since 4,000 miles. Meticulously maintained with BMW Seattle and Car Tender. Excellent condition. All the bells and whistles plus Bluetooth and six disk CD changer. A new battery and 2007 taxes paid! \$10,000. Contact Gary at 206-522-1527.

1987 325: Red w/tan leather interior, 139K miles Single owner. Purchased and serviced at BMW Seattle. Major 120K timing belt service completed. Gold BBS rims. Associated spares from twenty years of ownership. Still have original touch up paint and glove-box light. \$3,000 OBO. Please contact A.A. Lancaster at 253-946-4100.

1979 320i S Package: Black on black. Factory Recaros, limited slip, sport steering wheel, alloys. Factory sunroof, 2.0 litre motor. 165,000 original miles numbers matching. Original paint and interior in pristine condition. All four factory window stickers. All service records since new including original billsheets. Bilsteins, Hella headlights, Ansa exhaust, rear sway bar. New truck forces sale. Excellent example of rare 320i S. \$4,300 OBO. Call Cliff at 425-233-1815.

Parts for Sale

Quality parts from 1988 325is: Selling black leatherette rear seat, black hood, high-fidelity Alpine OEM rear speakers, and a other parts from my deceased E30, WBAAA130XJ8252079. Visit www.midwestroads.com/bmw for more details and prices. Contact Scott at 847-769-1098 or scottkuznicki@midwestroads.com. Pick up on Mercer Island or I'll deliver locally. The hood is in Illinois, but could be shipped if necessary.

Wheels for E46 M3: Set of 19" OEM wheels (2) 19x8 fr and (2) 19x9.5. The wheels are in perfect condition, they do not have center caps or tires. \$1,400/OBO. Contact Franco at francopessoa@hotmail.com or 206-883-4247 for additional info or photos.

K&N Generation II FIPK for E46 M3: Cold air intake, used for about 1,000 miles, I have all the hardware for installation. <http://www.knfilters.com/search/product.aspx?Prod=57-1003>. \$175/OBO. Contact Franco at francopessoa@hotmail.com or 206-883-4247 for additional info or photos.

Wheels/Tires: 2006 E46 M3 factory wheels and Michelin tires with only 500 miles of use. Perfect in every way. \$2,400. Borla stainless steel exhaust for E46 M3 in perfect condition. \$400. Contact Brian at btbp@comast.net or 253-265-2339.

Four perfect TRX (metric) wheels for 1983 533i. Will trade for Laphroig or better. Please contact Marsh at 206-842-0065 or email marshterry@hotmail.com.

Wheels/Tires: Four (4) 17x8.5 SSR Competition Wheels, offset 40, were on E36 M3. Anthracite with a machined lip. No curb rash on the wheels. Four (4) 245/40x17 Hoosiers track tires. Tires only have two track days on them, but haven't been used in about three years. They have been stored in a nice dry cool spot. \$800. Contact Ed Leifer at oceanview@worldnet.att.net. or by phone at 425-775-1668.

E46 Wheels/Tires: Four like new 7x16 V-spoke style-54 sport package wheels with near new (1,600 miles) Bridgestone Blizzak snow tires. \$500 OBO + delivery. Wally at 253-857-6137 or email wallyemmons@earthlink.net.

E30 325 Wheels/Tires: Save brake wear! Six BB (mfg) 15x6.5 vented rims. Three left and three right, with center caps. Includes well worn track sneakers (Toyo Proxies). Rims are in decent condition. \$300 OBO. Call 206-443-9519 before 9 p.m. or email jfer@pipeline.com.

E30 325 Wheels/Tires: It's never too early to get ready for bad weather. Four BMW stock steel rims mounted with Vredestein Snowstar snow tires. \$100 OBO. Email jfer@pipeline.com or call 206-443-9519 before 9 p.m.

E36 New Door Guard Trim: for 3 series four door. Asking \$75. Contact Naoya at naoya_98007@yahoo.com or 206-669-0898.

Miscellaneous

Puget Sound Region Club logo shirts for sale: Adult sizes. Short and long sleeve T-shirts in white and light grey, grey sweat-shirts, and beautiful embroidered Land's End collared shirts available. Contact Lance Richert for details and pricing at Lance@Richertnet.com.

June 5: July Issue July 2: August Issue

Classified Advertising Policy: Classified ads are free to current members. *Zündfolge* staff reserves the right to edit all classified ads. Ads must be typed and emailed to Lucetta Lightfoot at lucettalightfoot@msn.com or sent to *Zündfolge*, c/o Lucetta Lightfoot, P.O.Box 99391, Seattle, WA 98139. **All ads must be submitted for EACH publication.**

DEADLINES



23 years of BMW experience

Conveniently located in the South Sound area
10 minutes from downtown Tacoma

(253) 565-3049
www.airimportrepairs.com
8016 W. 27th - University Place - WA

Your One-Stop for Technology
Hardware and Software
"better than internet pricing"

**Check Out My Specials
on the Bulletin Board**
www.bmwpugetsound.com

Ask me about great deals on
Dell Computers & Rugged Notebooks

Government Computer Sales
Toll Free: 866-424-2766 ext 223
rsargent@govcomputersales.com



Reid Sargent
BMW CCA Member since 1997

Buy your parts from BavAuto and save:

- **Free shipping** on most orders over \$150. Exceptions apply to heavy/oversized items and shipments to AK, HI, PR, APOs, etc.
- **No sales tax.** It doesn't matter what state you live in, we're in tax-free New Hampshire.
- **Best price guarantee.** We'll match any advertised price for same-brand, in-stock items. Details are on our web site.



BMW parts, accessories and knowledge since 1974.

www.BavAuto.com • 800.535.2002

Download FREE tech & DIY articles at www.BavAuto.com/newsletter.

HAURY'S LAKE CITY COLLISION since 1963

Club member owned & operated



- ▶ BMW / MINI collision repair by BMW certified technicians
- ▶ BMW certified Glasurit paint system (maintains your warranty)
- ▶ Late model 5 and 6 Series aluminum certified (E60, E62)
- ▶ Performance modifications / driving school tech inspections



206.365.1565
jeff@hauryscollision.com
www.hauryscollision.com
M-F, 7:30 - 5:30 / Sat 9-1



11514 Lake City Way NE - Seattle

"M-CUBED" 2005 Concours d' Elegance Winner - 1st in Class

Car Tender

SRJ Enterprises, Inc.

**Your Dealer
Alternative**

Impeccable Service • Meticulous Care

Car Tender has been servicing European Automobiles in the Seattle area since 1971. We take pride in providing quality service and believe that integrity and communication are the key to our success. We perform factory-prescribed required servicing from oil changes to major services as well as European car performance upgrades.

Give us a try. You won't be disappointed!



BMW • Jaguar • Mercedes • Mini • Land Rover

• BMW Club discount • Morning downtown shuttle • Complimentary wash and vacuum with service



206.324.0345

1706 12th Avenue, Seattle, WA 98122



BMW CAR CLUB OF AMERICA

Puget Sound Region

P.O. Box 1259, Bellevue, Washington 98009

Periodicals
Postage
PAID
Seattle, WA