



**RED BLUFF INDUSTRIAL**  
Port of Houston - Pasadena, Texas

### 154,860 SF Available

Building 1: 59,170 SF

Building 2: 95,690 SF

Divisible

11.8 Acres

Strategic Port Location with Direct  
Access to Highway 225

### Proposed Building Specs:

Front Load Configuration with 210'  
Shared Truck Court

Dock High

ESFR Sprinkler System

32' Clear Height

Build to Suit Office

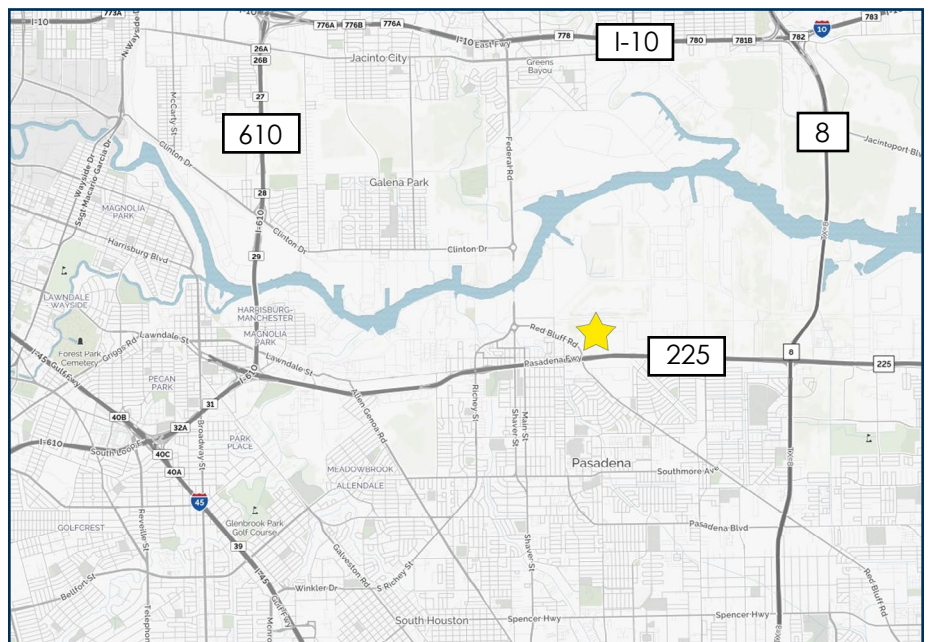
TPO Roof System

Ample Parking

Estimated Delivery Q3 2021



Sample Building Image



Site Location

### FOR MORE

### INFORMATION

### PLEASE CONTACT:

**Jason Dillee**

**CBRE**

Senior Vice President

713.577.1796

jason.dillee@cbre.com

**Nathan Wynne**

**CBRE**

First Vice President

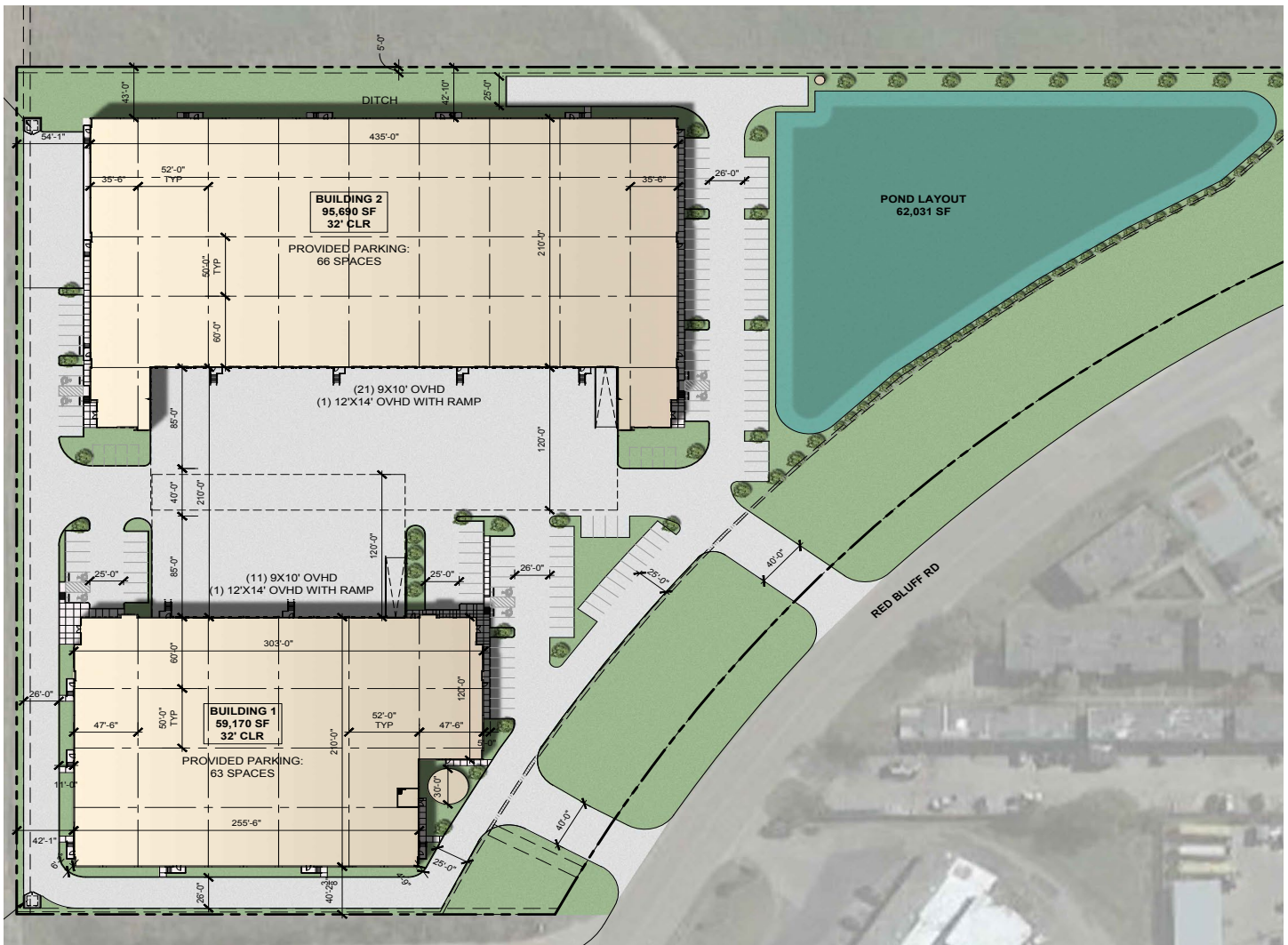
713.577.1724

nathan.wynne@cbre.com



RED BLUFF INDUSTRIAL

Port of Houston - Pasadena, Texas



Site Plan

FOR MORE  
INFORMATION  
PLEASE CONTACT:

Jason Dillee  
CBRE  
Senior Vice President  
713.577.1796  
jason.dillee@cbre.com

Nathan Wynne  
CBRE  
First Vice President  
713.577.1724  
nathan.wynne@cbre.com

