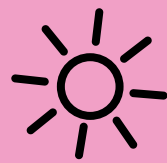




**CRINKLE-LEAF
PLANT**



A rare and unusual succulent with distinctive, chunky, wedge-shaped leaves with wavy edges. A light coating of short hairs on the foliage gives a silvery sheen to the blue-green leaves



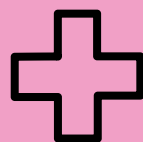
Thrives in full sun to partial shade



Water every 7-14 days, when the soil is totally dry



Easily propagated from its leaves by gently twisting from the stem



Typically not toxic