



CAPITAL TOUR

ARIZONA
GRAND CANYON STATE

VisitArizona.com
traveltrade.visitarizona.com



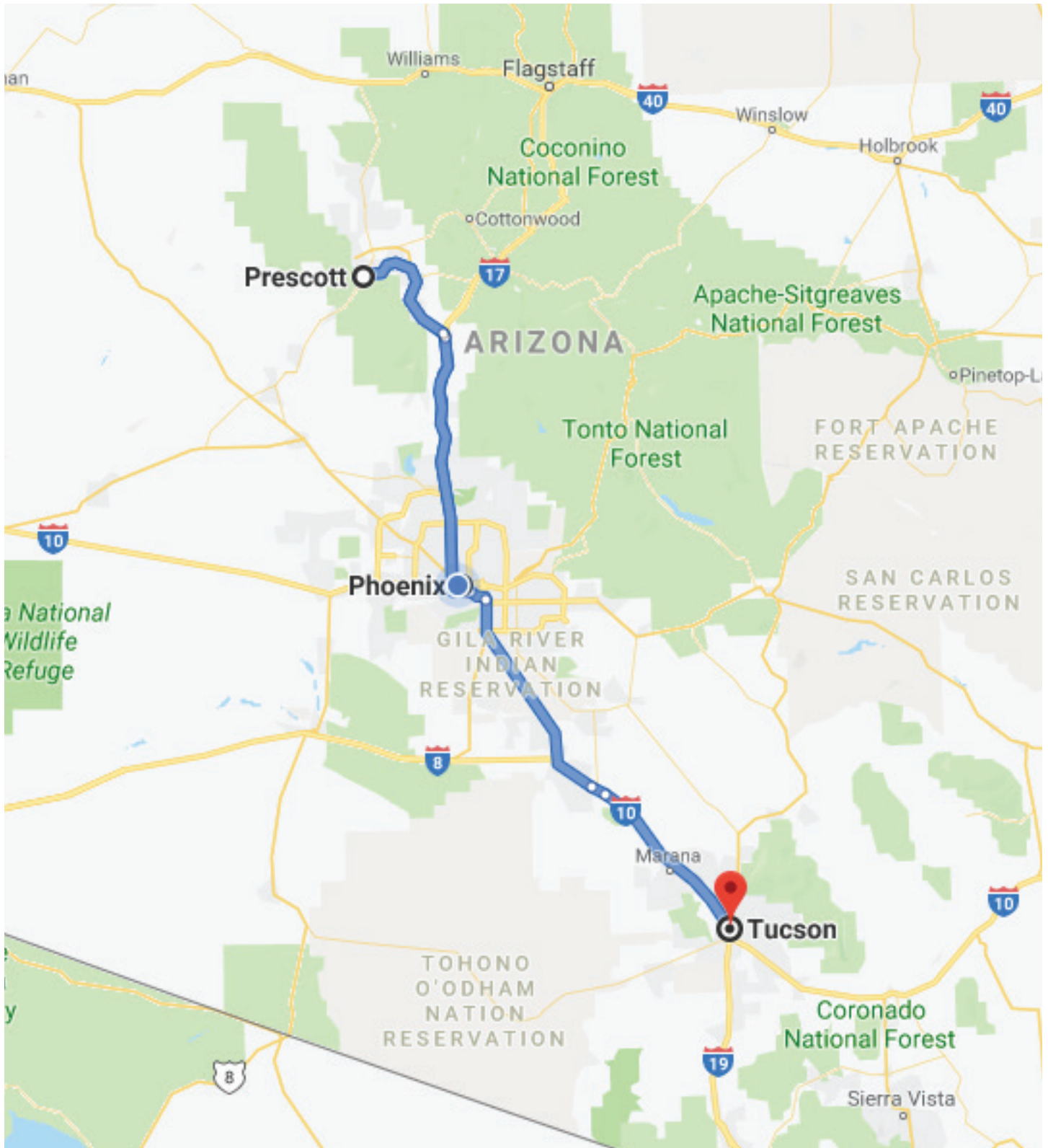
ARIZONA

GRAND CANYON STATE

Experience the dynamic history of the territorial capitals, Prescott and Tucson, as well as the present-day capital City of Phoenix. Each city radiates a unique culture and offers exceptional sights, sounds, and tastes. Set in a serene landscape, Prescott exudes Victorian charm with the Elks Opera House and Sharlott Hall Museum but also offers nightlife on Whiskey Row, the World's Oldest Rodeo, and fabulous outdoor experiences, including kayaking and 450 miles of trails. Tucson is an oasis for foodies with a rich history, from the ancient Hohokam people to Mission San Xavier del Bac, and a love of nature, as it is bordered by Saguaro National Park and Catalina State Park. Phoenix is a bustling metropolis teeming with southwest charm that boasts world class museums, resorts, and golf courses, professional teams for all 4 major sports, an active nightlife scene, and easy access to the tranquil Sonoran Desert.



CAPITAL TOUR ROAD MAP



DAY 1

PHOENIX – PRESCOTT

MORNING

Drive from Phoenix to Prescott. The drive is 99.5 miles or 160.1 kilometers.

Watch the landscape change after Black Canyon City...saguaros can't grow at higher elevations, and you are headed to a mile above sea level.

Tour the **Sharlot Hall Museum** – The Sharlot Hall Museum is named after its founder, Sharlot Mabridth Hall (1870-1943), who became well known as a poet, activist, politician, and Arizona's first territorial historian. Sharlot Hall was one of the West's most remarkable women. As early as 1907, Ms. Hall saw the need to save Arizona's history and planned to develop a museum. She began to collect both American Indian and pioneer material. In 1927, she started restoring the first Territorial Governor's residence and moved her extensive collection of artifacts and documents to this location, opening it as a museum in 1928. Today, the Museum features seven historic buildings, compelling exhibits, and beautiful gardens, which serve as the setting for numerous public festivals. The Library and Archives, which are open to the public, hold a vast collection of rare books, original documents, historical photographs, maps, and oral history.

Tel: 928-445-3122

415 W. Gurley St., Prescott, AZ 86301

Tour the **Elks Opera House** – The Elks Opera House Foundation Guild offers tours of the Opera House dressed in true Victorian fashion. Architecturally, the building, built in 1904, represents a transition from the Victorian commercial styles of the 19th century to the Sullivanesque and New-Classical designs of the early 20th century. The Opera house underwent many changes over the years, including the removal of many architectural features to allow for the installation of a movie screen in the 1940's. However, it is now restored to its original grandeur, having recently undergone a million dollar renovation project. The Elk's Opera House invites you to tour the beautiful theater and take a step back in time.

Tel: 928-777-1359

117 E. Gurley St., Prescott, AZ 86301

AFTERNOON

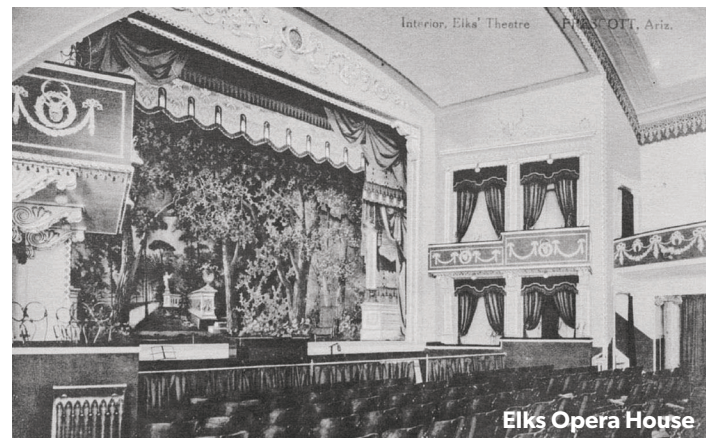
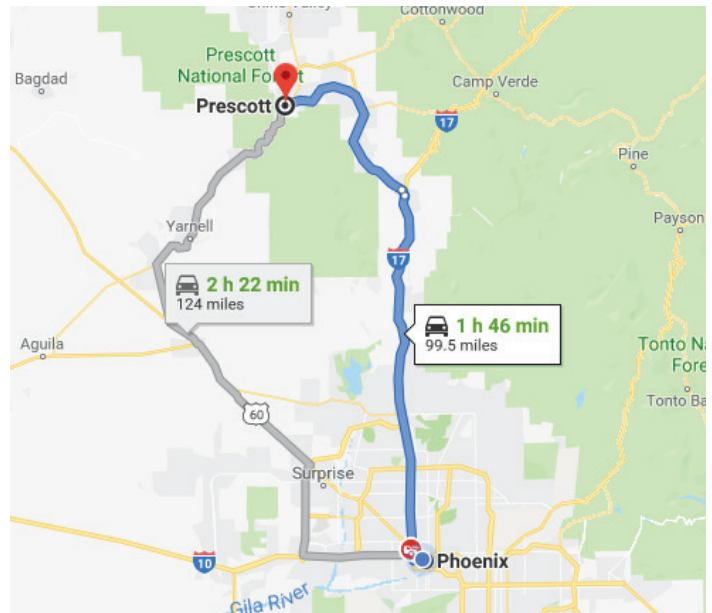
Lunch at **The Palace Restaurant & Saloon** – The Palace Restaurant & Saloon, located on Whiskey Row, is the oldest frontier bar in Arizona, having first opened its doors in September 1877. Although Whiskey Row was known for its many saloons, The Palace was much more than a fancy "watering hole." Men came in to check for notices of work available; it served as an election central for several area political races and cattle spreads; and mineral claims were bought and sold over the bar.

Tel: 928-541-1996

120 S. Montezuma St., Prescott, AZ 86301



Watson Lake



Elks Opera House

Kayak at **Watson Lake Park** – You might think that Arizona is an arid moonscape dotted with cacti and other prickly plant life, but Prescott is a mile above sea level and enjoys four mild seasons and blooming flora. The City of Prescott boasts 16 parks and three lakes, with kayak, canoe, and bicycle rentals at all three. Enjoy taking in the natural bounty Northern Arizona has to offer while kayaking through unique rock formations, known as Granite Deus, at Watson Lake.

3101 Watson Lake Rd., Prescott, AZ 86301

Check-in at the **Hassayampa Inn** – The Hassayampa Inn's tradition of hospitality dates to its opening in November of 1927. For nearly a century, the Hassayampa Inn has been a place to escape the stresses of busy urban life, a place for a romantic getaway, and an oasis dedicated to restoring balance, within the picturesque setting of Prescott.

Tel: 928-778-9434

122 E. Gurley St., Prescott, AZ 86301

EVENING

Dinner at **Icha Maajoh** – Enjoy Icha Maajoh, which combines a unique mix of contemporary and rustic details in an upscale yet relaxing setting - experience Prescott dining unlike anything else. This Prescott restaurant serves fresh contemporary American fare along with a special twilight menu.

Tel: 928-776-1666

1500 State Route 69, Prescott, AZ 86301

Overnight in Prescott

DAY 2

PRESCOTT – TUCSON

MORNING

Hike at the **Highlands Center for Natural History** – A non-profit science and ecological education organization located in Prescott, Arizona, helping children and adults discover the wonders of nature and become wise caretakers of the land. Highlands fosters the connection between people and the natural world through outdoor-science education based on observation and discovery of the Central Arizona Highlands.

Tel: 928-776-9550

1375 S. Walker Rd., Prescott, AZ 86303

Visit the **Phippen Museum** – The Phippen Museum preserves and exhibits museum quality Western art, and educates the public about the unique heritage, history, legends, and influence of art of the American West. The Museum opened in 1984 and was named after Arizona resident and founding member of the Cowboy Artists of America, George Phippen.

Tel: 928-778-1385

4701 N. Highway 89, Prescott, AZ 86301

Shopping in downtown Prescott on Gurley St.

AFTERNOON

Lunch at **Lone Spur Café** – A Western-themed restaurant known throughout the state for great tasting food, superior service, and generous portions. The Cowboy Benedict, Southwestern burger, and the famous “big” salads come highly recommended!

Tel: 928-445-8202

106 W. Gurley St., Prescott, AZ 86301

Drive from Prescott to Tucson. The drive is 213 miles or 342.8 kilometers.

EVENING

Check-in at **Westward Look Resort** – A multimillion-dollar renovation has delivered all-new guest rooms, lobby, meeting spaces, pool areas, GOLD restaurant, and Lookout Bar & Grille to the Westward Look Resort. The property, located at the base of the Catalina Mountains, offers on-site trails, and 360° views and swimming in one of the pool areas. The Sonoran Spa offers desert-inspired treatments.

Tel: 520-297-1151

245 E. Ina Rd., Tucson, AZ 85704

Dinner at **GOLD of the Westward Look Resort** – The 4-star restaurant offers a seasonal, sophisticated menu celebrating modern American cuisine. GOLD serves refined, fresh, creative fare with a touch of desert-inspired flavor. The beautiful, artistically plated meals are served in a space that boasts incredible panoramic mountain and city views.

Tel: 520-297-1151

245 E. Ina Rd., Tucson, AZ 85704

Overnight in Tucson





Tucson Skyline

DAY 3

TUCSON

MORNING

Old Town Tucson Walking Tour – Tour Downtown Tucson, where past meets present. Highlights include the legendary Hotel Congress, the historic Train Depot, the Presidio Neighborhood, where the elite built their homes in the early 1800s, the Pima County Courthouse, Old Town Artisans and the Tucson Museum of Art and Historic Block. Be sure to include time to shop and explore.

Tel: 520-299-6705

110 S. Church Ave., Tucson, AZ 85701

AFTERNOON

Walk to **El Charro** for lunch from Old Town Artisans – El Charro is the oldest family-operated Mexican restaurant in the US, making authentic Mexican food since 1922 and has been named “One of the Country’s Five Best” by USA Today. The founder, Tia Monica Flin, is known as “The Inventor of the Cimichanga.” Enjoy El Charro’s late-night shopping, cantina, patio, and coffeehouse.

Tel: 520-622-1922

311 N. Court Ave., Tucson, AZ 85701

Self-guided exploration of the **Center for Creative Photography** – Internationally respected gallery and museum holds contemporary works of nearly every major North American, 20th-century photographer, including America’s foremost collections of images by masters Ansel Adams and Alfred Stieglitz.

Tel: 520-621-7968

1030 N. Olive Rd., Tucson, AZ 85721

Tour of **Mission San Xavier del Bac** – This active Franciscan mission is located on the Tohono O’odham Nation. A recent renovation revealed intricate, centuries-old frescoes depicting the church’s history in Southern Arizona and Mexico. “The White Dove of the Desert” is one of Tucson’s most beautiful attractions, founded by Father Eusebio Kino in the early 1700’s. Its newest moniker is the “Sistine Chapel of North America” because the international restoration project has been uncovering vibrant colors and surprising levels of craftsmanship. The site has a museum devoted to the native people of Bac and religious artifacts. Mass is conducted daily.

Tel: 520-407-6130

1950 W. San Xavier Rd., Tucson, AZ 85746

EVENING

Enjoy dinner and a show at **The Gaslight Theatre** – The Gaslight Theatre offers musical comedy melodramas 6 nights a week, with 5 different shows per year, ranging from Westerns to sci-fi spoofs. Cheer the hero and boo the villain while enjoying beer or soft drinks, pizza, ice cream, and mountains of free popcorn. ***Call for tickets. Online purchases not available.***

Tel: 520-886-9428

7010 E. Broadway Blvd., Tucson, AZ 85710

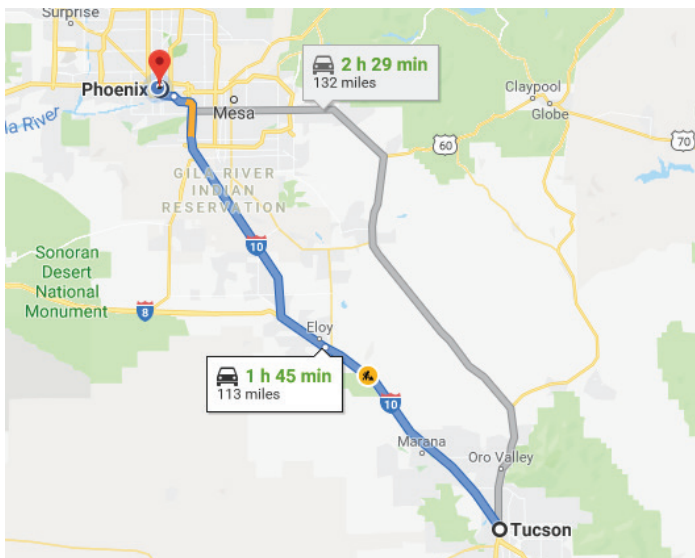
Overnight in Tucson.



Mission San Xavier Del Bac



Hotel Congress



DAY 4

TUCSON – PHOENIX

MORNING

Horseback Ride and Breakfast at **Tanque Verde Guest Ranch** – Every Thursday and Sunday morning, ride the trails up into the desert foothills where the Old Homestead awaits with breakfast fit for a hungry cowboy. Enjoy the leisurely horseback ride while the morning sun greets you with its warm embrace. Take a moment to close your eyes and breathe in the fresh desert air as you gently sway back and forth to the rhythm of your horse's steps. Once you reach your destination, fill up on blueberry pancakes, eggs, bacon, sausage, and more, all cooked fresh right before your eyes. Located on 640 acres in the picturesque Rincon Mountain foothills just east of Tucson, the Tanque Verde Guest Ranch offers desert horseback riding, hiking, mountain biking, nature walks, tennis, and more. Tanque Verde is one of America's old time cattle and guest ranches, and is recognized as one of the last luxurious outposts of the Old West. This working dude ranch, founded in 1868, is adjacent to Saguaro National Park and Coronado National Forest.

Tel: 520-731-5578

14301 E. Speedway Blvd., Tucson, AZ 85748

AFTERNOON

Depart Tucson for Phoenix. The drive is 113 miles or 181.9 kilometers.

Visit the **Musical Instrument Museum** – The Musical Instrument Museum (MIM) in Phoenix opened in 2010, and features the largest collection of instruments from around the world. Guests can explore and experience the rich diversity of the world's music in the 190,000-square-foot building, which includes two floors of galleries, the Music Theater, a classroom, a garden courtyard, the MIM Café and Coffee Shop, and the Museum Store. With nearly 5,000 instruments and objects on display, MIM is organized into five Geographical Galleries that each focus on a distinct global region. The galleries feature advanced wireless technology and high-resolution video screens, enabling guests to see instruments, hear their sounds, and observe them being played in their original settings. The Experience Gallery invites guests to enjoy a unique hands-on encounter with instruments from all over the world, while the Artist Gallery features instruments from world-renowned musicians including Elvis Presley, John Lennon, and Carlos Santana.

Tel: 480-478-6000

4725 E. Mayo Blvd., Phoenix, AZ 85050

EVENING

Check-in – **Westin Phoenix Downtown** – Offering its sense of style and sophistication, it's the downtown's first dedicated business and leisure hotel, and with 242 guestrooms, the Westin provides a luxurious, customer service-centric alternative to the city's larger convention hotels. Located in the 26-floor Freeport McMoRan Center, the large guestrooms and 3,000 square-foot ballroom feature dramatic floor-to-ceiling windows. Just off the lobby is Province, a Randy Zweiban restaurant, with spacious patio dining.

Tel: 602-429-3500

333 N. Central Ave., Phoenix, AZ 85004

Dinner at **Frank & Albert's of the Arizona Biltmore** – Named for the architects of the Arizona Biltmore, Frank Lloyd Wright and Albert Chase McArthur, Frank & Albert's is built on favorites and fresh thinking, indigenous culinary instinct, and the passion for pushing all boundaries. The legendary Arizona Biltmore, known as the "Jewel of the Desert" and renowned for its Frank Lloyd Wright-inspired design, is nestled on 39 acres at the foot of the Phoenix Mountain Preserve with panoramas of majestic Piestewa Peak. The Arizona Biltmore has achieved the highest luxury standards while faithfully preserving the historic design and ambiance that has made it an architectural landmark with a unique and storied past.

Tel: 602-954-2518

2400 E. Missouri Ave., Phoenix, AZ 85016

Overnight in Phoenix



Musical Instrument Museum

DAY 5

PHOENIX

MORNING

Visit the **Desert Botanical Garden** - The Desert Botanical Garden offers the world's finest collection of arid-land plants from deserts around the world in a unique outdoor setting. The Garden has more than 50,000 accessioned plants throughout its five thematic trails, which illustrate topics such as conservation, desert living, plants, and people of the Sonoran Desert and desert wildflowers. The Garden offers a variety of lectures and workshops on desert landscaping and horticulture, botanical art and illustration, nature art and photography, and health and wellness. Visit the Garden and enjoy specialized tours, special events, seasonal exhibits, concerts, family activities, an outdoor café and the Garden's gift and plant shop. Summer flashlight Tours are a sensory adventure where you will see, hear and feel the desert night with its nighthawks, snakes, insects and night-blooming flowers.

Tel: 480-481-8104

1201 N. Galvin Parkway, Phoenix, AZ 85008

Visit the **Heard Museum** - The internationally acclaimed Heard Museum is one of the best places to experience the myriad cultures and art of Native Americans of the Southwest. With a commanding presence on Central Avenue in downtown Phoenix, the museum hosts nearly 250,000 visitors a year and provides Indian artists with a wonderful home that will excite and inspire visitors from around the world. The museum's 10 spacious exhibit galleries and beautiful outdoor courtyards feature outstanding traditional and contemporary Native American art.

Tel: 602-252-8848

2301 N. Central Ave., Phoenix, AZ 85004

AFTERNOON

Lunch at **Province at the Westin Phoenix Downtown** - The American restaurant features cuisine inspired by South America and Spain. Province features seasonal, local, farm-to-table cuisine from Executive Chef Randy Zweiban with a true blending of old world and new world culinary sensibilities. Province is committed to serving the best seasonal products available and the ingredients used to craft our dishes and cocktails are sourced from all natural and sustainable sources. The wine list features organic, biodynamic and sustainable wines from around the world as well as a selection of local Arizona wines. Come join us for a casual breakfast or lunch or an elegant dinner. The restaurant won the 2018 Diner's Choice Award from Opentable. Enjoy breakfast, lunch or dinner seven days a week, all day and evening, or simply join us for a handcrafted cocktail at the bar or on the patio.

Tel: 602-429-3600

333 N. Central Ave., Phoenix, AZ 85004

Downtown Phoenix walking tour guided by a Downtown Phoenix Ambassador - Downtown Phoenix is the place where creative people come to do extraordinary things. It is the commerce and cultural capital of Arizona, representing an urban hub of performing arts venues, unique restaurants, museums, educational opportunities and diverse residential options. Showcasing the latest additions to downtown as well as historic sites, the tour includes: CityScape, Heritage Square, Orpheum Theatre, Metro Light Rail, Phoenix Convention Center and Roosevelt Row. Enjoy an overview of downtown Phoenix with a walking concierge. The Phoenix Ambassador program is a resource of info for special events, local attractions, restaurants, hotels, parking and more. Your ambassador is your go to guide for dining recommendations, parking and transportation options, or walking tours.

Tel: 602-495-1500

1 E. Washington St., Ste. 230, Phoenix, AZ 85004

EVENING

Dinner at **Aunt Chilada's Squaw Peak** nestled in the shadow of the Squaw Peak Mountain, Aunt Chilada's is truly a historic landmark with a personality all its own. Constructed in the 1890's from desert stone and railroad ties, the



CamelBack Mountain



Desert Botanical Garden

original building served as a supply depot and general store for the mercury miners passing through the Dreamy Draw. Today, Aunt Chilada's not only carries on that century old tradition of heartfelt Southwestern hospitality, but also dishes out the finest Mexican food this side of the border. Inside, select from four distinctive settings, from the Main Dining Room, featuring a hand carved fountain and stone fireplace to the Cantina, where the band plays on Friday nights with the most infamous happy hour in the city, or the Train Depot room, or a more traditional banquet room setting for a quiet event. The largest garden patio can comfortably accommodate 200 people, the Palm Court patio and Palapa Bar seat over 80 which can be combined.

Tel: 602-431-6407

7330 N. Dreamy Draw Dr., Phoenix, AZ 85020

Overnight in Phoenix.

DAY 5

PHOENIX

Enjoy Phoenix and/or Tempe at your leisure. Suggested stops accessible by Light Rail transportation follow below. Enjoy dining, shopping, and other activities without the hassle of finding parking.

RESTAURANTS:

FEZ (433 feet, 1 minute walk)

Roosevelt/Central Ave Light Rail Station

105 W. Portland St., Phoenix, AZ 85003

Modern restaurant that loves creating new menu items

Gallo Blanco Café (.5 miles, 11 minute walk)

Indian School/Central Light Rail Station

928 E. Pierce St., Phoenix, AZ 85006

Mexican food made with locally-sourced ingredients

St. Francis (.2 miles, 4 minute walk)

Central Ave/Camelback Light Rail Station

111 E. Camelback Rd., Phoenix, AZ 85012

Neighborhood restaurant and bar serving seasonal wood-fired cuisine

Phoenix Public Market (.3 miles, 6 minute walk from either station below)

Central Ave/Roosevelt St Light Rail Station

Van Buren/Central Ave Light Rail Station

14 E. Pierce St., Phoenix, AZ 85004

Fresh market cuisine for breakfast, lunch, and dinner

Postino Central (.3 miles, 5 minute walk)

Central Ave/Camelback Light Rail Station

5144 N. Central Ave., Phoenix, AZ 85012

Old post office turned Italian restaurant, famous for their wine and bruschetta

SHOPPING:

Antique Sugar (.3 miles, 1 minute walk)

Roosevelt/Central Ave Light Rail Station

Men's and Women's vintage clothing

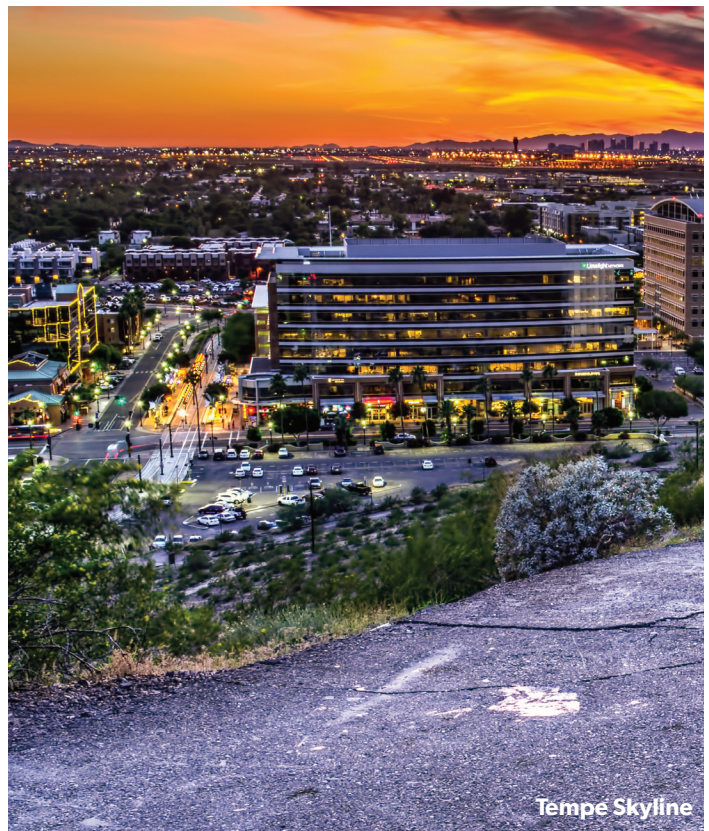
801 N. 2nd St. Suite 104, Phoenix, AZ 85004

Bunky Boutique (.1 miles, 3 minute walk)

McDowell/Central Ave Light Rail Station

A mix of national and local brands in a remodeled home

1437 N. 1st St., Phoenix, AZ 85004



Tempe Skyline



Phoenix Public Market



Ocotillo



Frances (.1 miles, 1 minute walk)
Central Ave./Camelback Light Rail Station
Women's boutique
10 W. Camelback Rd., Phoenix, AZ 85013

Poor Little Rich Girl (2.5 miles, 20 minute walk)
Central Ave./Camelback Light Rail Station
1582 E. Bethany Home Rd., Phoenix, AZ 85014
Consignment store, sells locally made jewelry

THINGS TO DO IN TEMPE, AZ:

Mill Avenue District

Third St./ Mill Ave. Light Rail Station
Tempe's historic downtown with more than 100 restaurants, retailers and taverns. It represents a destination for the independently spirited, a hub for entertainment and an attractive market for entrepreneurial business. Choose from one of the many locally owned and nationally loved restaurants, relax at a microbrewery or wine bar, see an independent film at Valley Art Theatre, view an art exhibition at the US Post Office at Fifth St. and Mill Ave. or take a self-guided tour of public art.
500 S. Mill Ave. Tempe, AZ 85281

Tempe Town Lake

(.1 miles, 3 minute walk)
Third St./Mill Ave. Light Rail Station – From the station, walk north on Mill Avenue towards Rio Salado Parkway. The entrance to Tempe Beach Park is at the corner of Mill and Rio Salado. Enter the park to walk to the lake.
Go for a stroll around this urban recreational oasis or rent a kayak, paddleboard, pedal boat, or electric boat. The Tempe Town Lake Pedestrian Bridge provides easy access to the north side of the lake. There are also multiple public art projects located along the 5 miles of pathways that surround the lake.
www.boats4rent.com or 480-303-9803
72 W. Rio Salado Parkway Tempe, AZ 85282

ASU Football

(.2 miles, 3 minute walk)
Veteran's Way/ College Ave. Light Rail Station
The Arizona State University Sun Devils take on Pac-12 rivals at Sun Devil Stadium.

Hike "A" Mountain

(.1 miles, 3 minute walk)
Third St./Mill Ave. Light Rail Station
Visitors can easily hike up "A" Mountain in the Mill Avenue District. Recently added to the National Register of Historic Places, "A" Mountain provides a bird's eye view of Mill Avenue, the ASU Tempe Campus and Tempe Town Lake. Look for petroglyphs, left by the ancient Hohokam people, along the trails. It is also a popular place to watch a majestic Arizona sunset. There are several trailheads located behind the Tempe Mission Palms Hotel and behind the Hayden Flour Mill.

Hiking at Papago Park

Priest Dr./Washington St. Light Rail Station
From the station, transfer to the city bus route 1 (Washington) heading North. Exit the bus at the Phoenix Zoo. There is a hiking trail just north of the zoo parking lot. The trail is for Hole in the Rock, a landmark that can easily be spotted from the zoo. Follow the paved path from the parking lot to the trail. There is also a trailhead directly across Galvin Parkway from the zoo. Papago Park is a hilly, desert park located between the cities of Phoenix, Scottsdale and Tempe. Its winding trails and scenic landscape make it a popular destination for hikers and bikers to explore.

ARIZONA
GRAND CANYON STATE

VISITARIZONA.COM