
Tektis

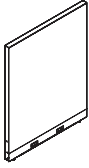
Panel Systems



A M Q

Tektis statement of line

Panels



Fabric, Monolithic Trackable Panels

- Thin profile, 2" thick
- Factory or Field-Installed Power
- Heights: 42, 48, 54 & 66"
- Widths: 24, 30, 36, 42, 48, 60"



Fabric, Panel Stackers

- Heights: 12, 18, 24"
- Widths: 24, 30, 36, 42, 48, 60, 72"



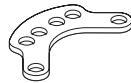
Glass, Panel Stackers

- Heights: 12, 18, 24"
- Widths: 24, 30, 36, 42, 48, 60, 72"

Panel Connectors



Change-of-Height Connector



Standard Connector

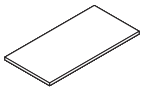


120° Connector

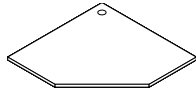


Wall Start

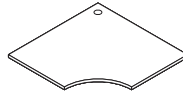
Worksurfaces



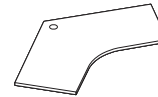
Straight Worksurface



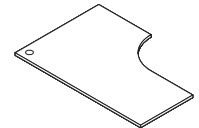
Straight Corner Worksurface



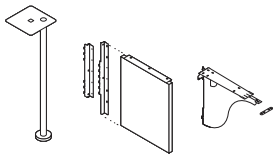
Curved Corner Worksurface



120° Corner Worksurface

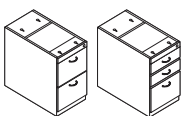


Extended Curved Corner Worksurface

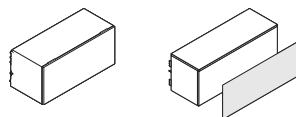


Worksurface Supports
(Post Leg, End Panel, Cantilever)

Storage



Fixed Steel Pedestals



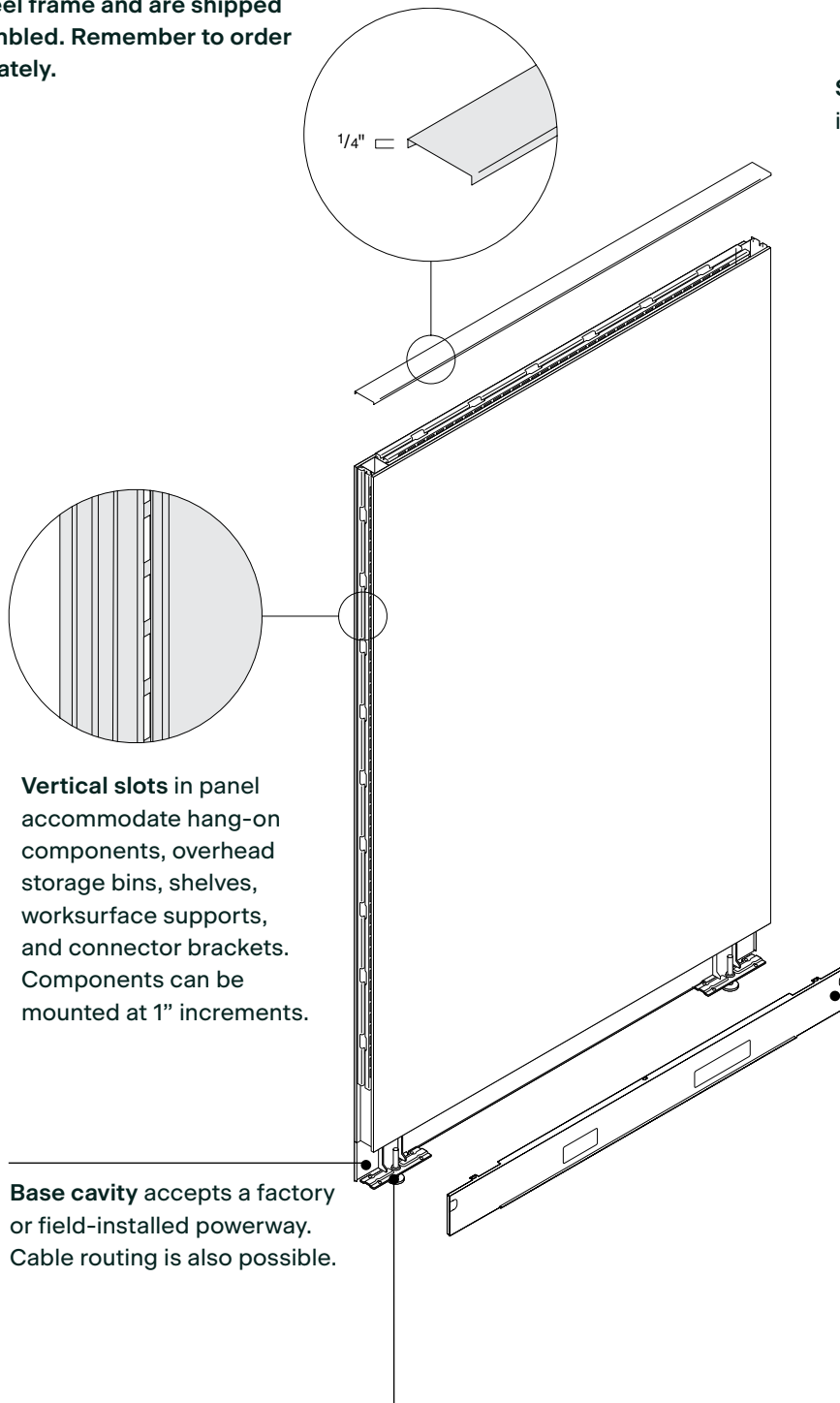
Steel Overhead



Laminate Shelf

Monolithic Panels

Panels are constructed with a rigid, tubular steel frame and are shipped fully assembled. Remember to order trim separately.



Steel top caps are available in a standard low height.

Vertical slots in panel accommodate hang-on components, overhead storage bins, shelves, worksurface supports, and connector brackets. Components can be mounted at 1" increments.

Base cavity accepts a factory or field-installed powerway. Cable routing is also possible.

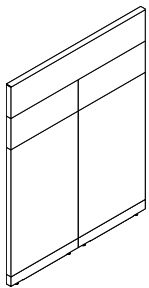
Removable base cover has receptacle knockouts. Base covers have one standard-size opening on the left and an opening for a standard or larger-size receptacle opening on the right.
Exception: 24"W and 30"W base covers have a standard-size opening on one side of the panel opening and a larger size on the reverse side.

Leveling glides adjust 1 1/2" to install panels on uneven floors.

Panel Stackers

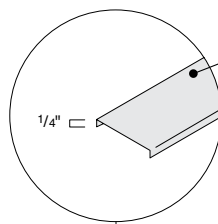
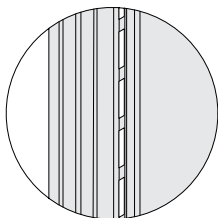
Stackers are constructed with a rigid, tubular steel frame and are shipped fully assembled.

Vertical slots in stackers, identical to slots in base panel, accommodate overhead storage and hang-on components, and connector brackets. Components can be mounted at 1" increments.

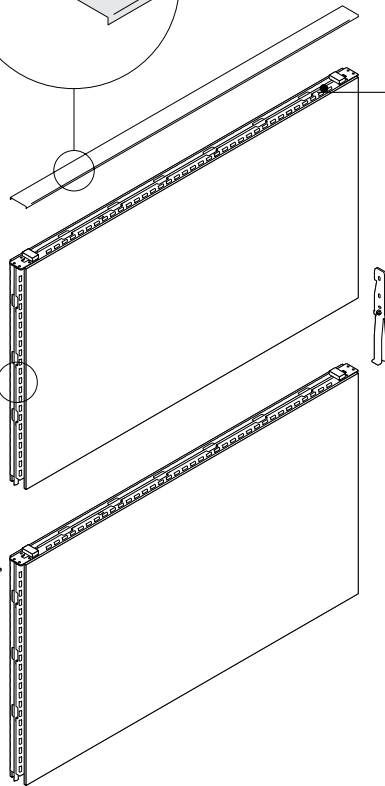


Spanning stackers are available in 48", 60", or 72".

Stacker can span over an in-line connection between two base panels or two stackers. Width of stacker must equal total width of two base panels.



Top cap and top cap aligner from base panel are used to trim the top of stacker.



Horizontal slots in stackers are identical to slots in base panels.

Stacking Guidelines

Stackers are available in 12"H, 18"H, or 24"H in tackable acoustical or glass.

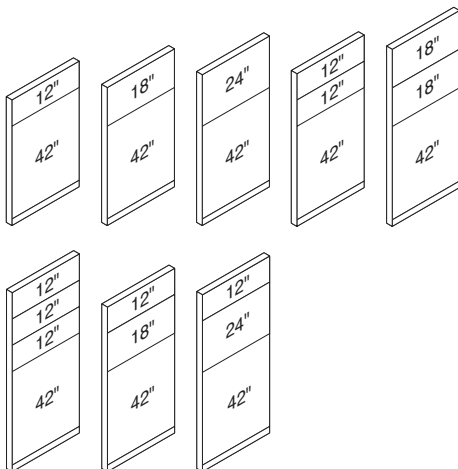
Maximum height is 78".

Maximum number of tackable acoustical stackers is three.

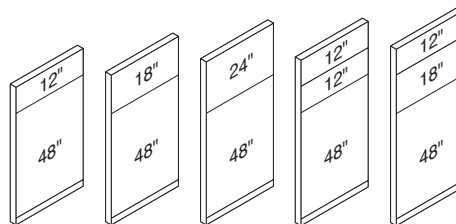
Maximum number of glass stackers is one.

Any height base panel can be used with stackers.

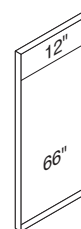
42"H Base panels with stacker



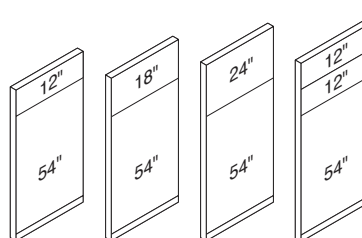
48"H Base panels with stacker



66"H Base panels with stacker



54"H Base panels with stacker

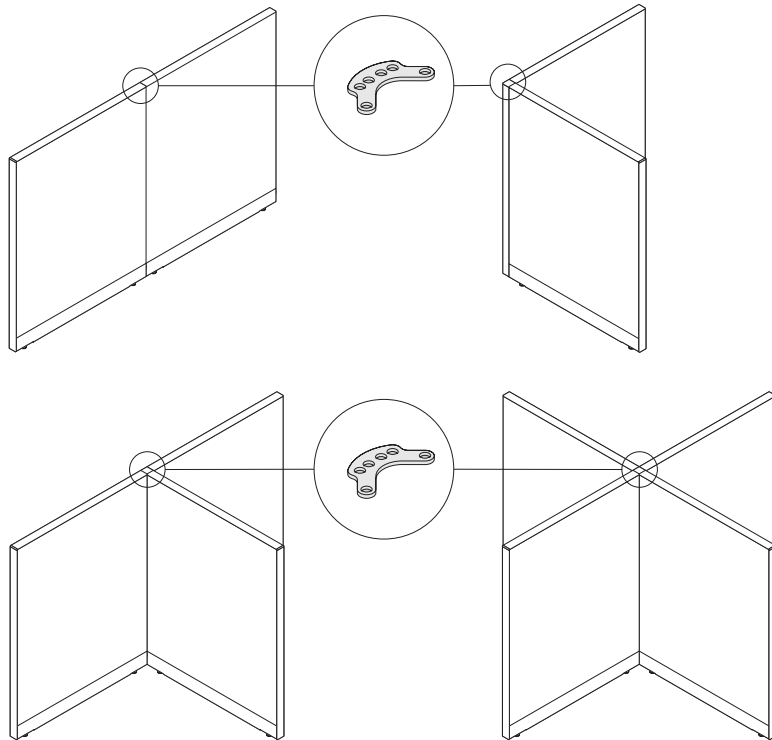


Panel Connectors

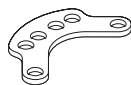
Universal connector package joins panels of the same height in a straight line or in L-, T-, or X-configurations. The package, standard with panels, contains two universal connectors—one for the top and one for the bottom connection.

Same connector is used at both the top and bottom of panel.

Different slots are used to create in-line, L-, T-, or X-conditions.



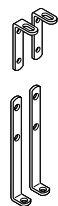
Change-of-Height Connector



Standard Connector



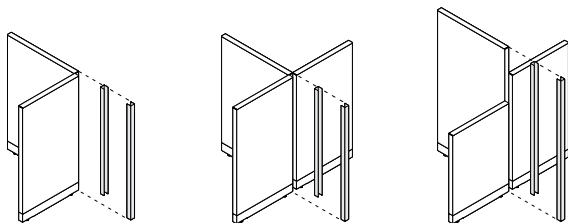
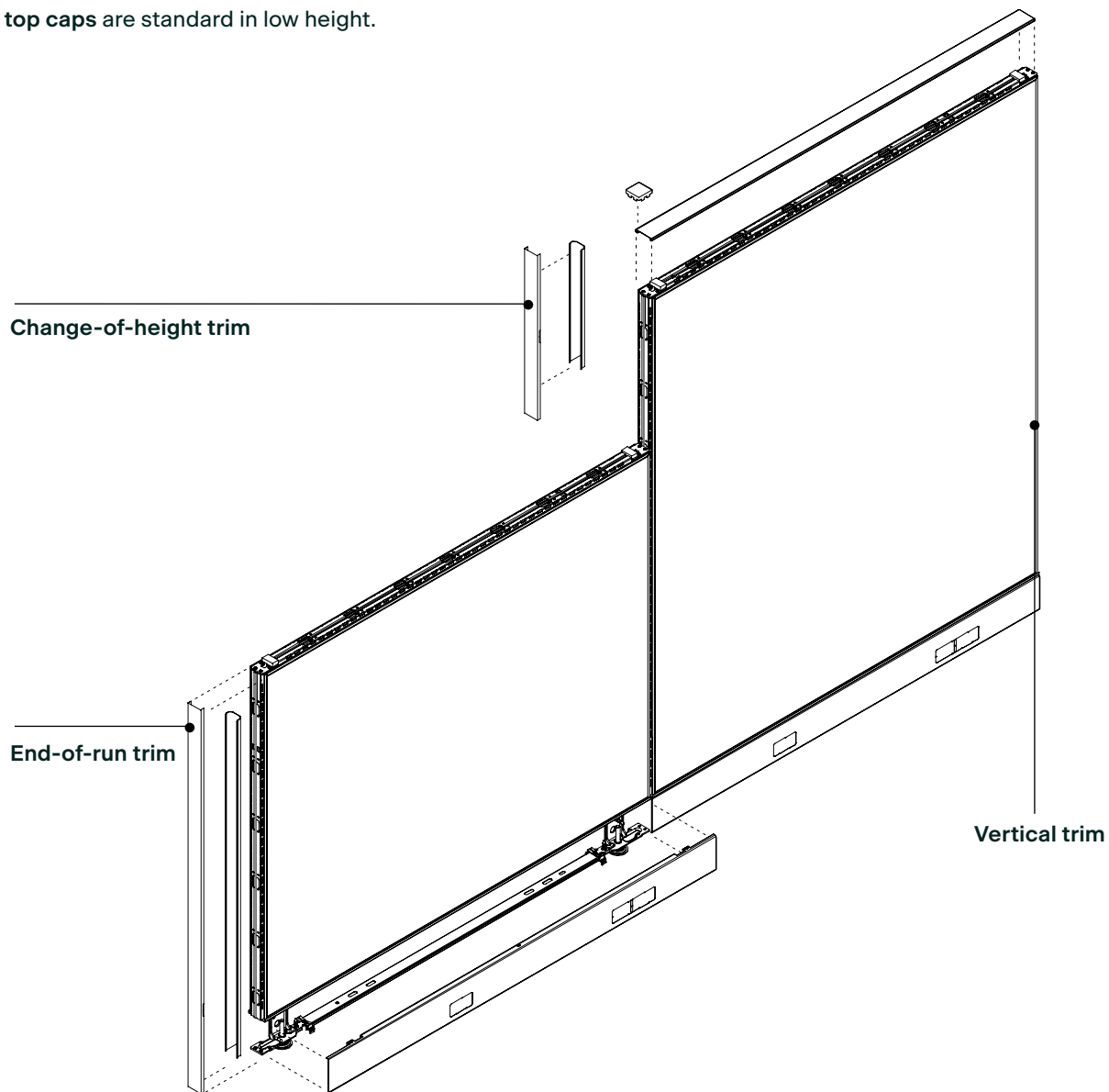
120° Connector



Wall Start

Panel Trim

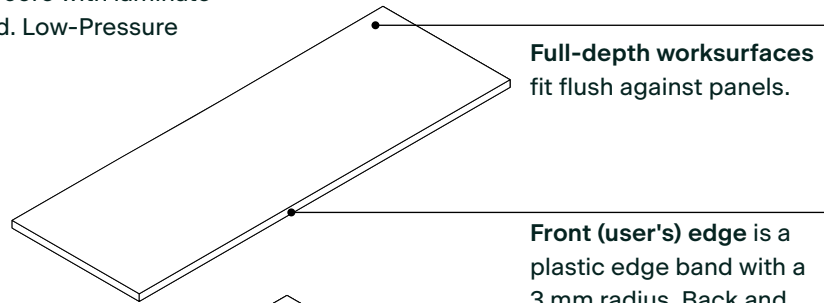
Steel top caps are standard in low height.



Vertical corner trim allows cables to be laid in before the cover is snapped into place and can be removed for cable access. Corner trim is required for L-, T-, and X-configurations and includes a low trim end cap. Always specify vertical corner trim the same height as the tallest panel.

Tektis Worksurfaces

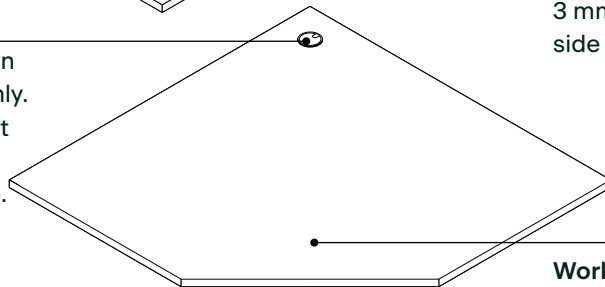
Worksurface has a wood core with laminate top and plastic edge band. Low-Pressure Laminates are available.



Full-depth worksurfaces fit flush against panels.

Front (user's) edge is a plastic edge band with a 3 mm radius. Back and side edges are flat.

Grommet is standard on corner worksurfaces only. Field-installed grommet requires a 3" diameter hole in the worksurface.



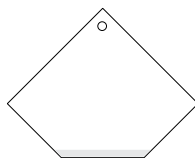
Worksurface has a wood core with a Low-Pressure Laminate surface and is 1 $\frac{3}{16}$ " thick.

Low-Pressure Laminates, or LPLs, are created by dipping decorative crafted paper in melamine resin. The melamine dipped paper is then bonded to a wood core under heat and high-pressure. LPLs are generally suitable for use in lower impact areas. LPLs are generally used in vertical applications as well as tops for workstations and private offices.



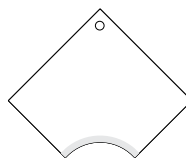
Straight Worksurfaces

- Depths: 24, 30"
- Widths: 24 – 72"



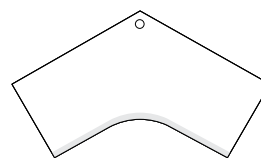
Straight Corner Worksurfaces

- Depths: 24, 30"
- Widths: 36, 42, 48"



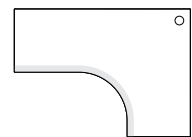
Curved Corner Worksurfaces

- Depths: 24, 30"
- Widths: 36, 42, 48"



120° Corner Worksurfaces

- Depth: 24"
- Width: 36, 42, 48"



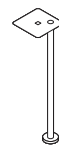
Extended Curved Corner Worksurfaces

- Left & Right Hand options
- Depth: 24, 30"
- Width: 60, 72"

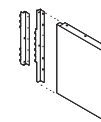
Directional laminate grain direction



Worksurface Supports



Post Leg



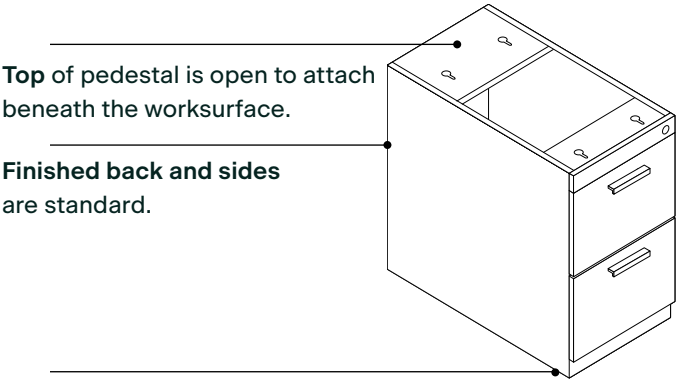
End Panel



Cantilever

Tektis Pedestals

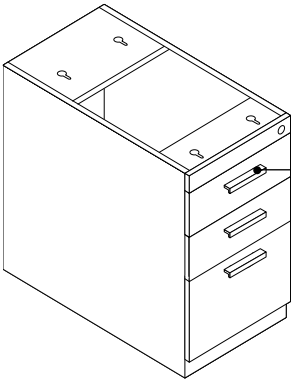
Pedestals provide fixed storage for personal items and filing of infrequently referenced materials.



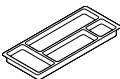
Top of pedestal is open to attach beneath the worksurface.

Finished back and sides are standard.

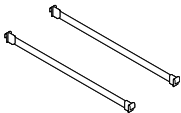
Leveling glides on pedestals adjust to install furniture on uneven floors. Leveling glide range is 1".



Ledge pulls are available as an option on drawers.



Pencil tray for use with fixed pedestals are available as optional accessories.



To file legal-size or side-to-side letter-size filing in pedestal file drawers, specify optional 15"W file rails.

Pedestal Type	F/F or B/B/F
Depth	21 ³ / ₁₆ " , 27 ¹³ / ₁₆ "
Width	15 ¹³ / ₁₆ "
Height	27"

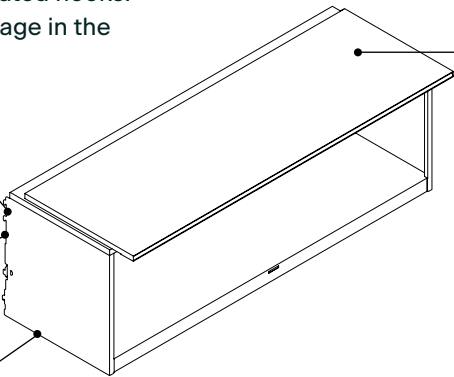
Tektis Bins and Shelves

Bins can be attached to Tektis with integrated hooks. These storage bins provide overhead storage in the workspace.

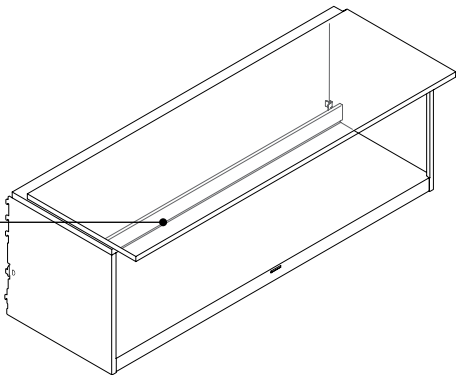
On-module attachment hooks are integral to the end supports and are used to mount bins on panels of the same width as bins.

Safety catch locks overhead storage unit to frame to prevent accidental removal

Bin is steel and ships assembled.

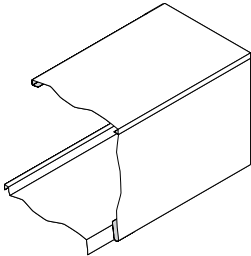


Flat-front lift-up doors open and close quietly. When up, the doors rest on top of the case to provide more storage space inside. Markerboard surface is available as an add-on.

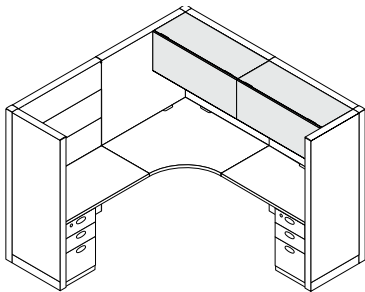


Backstop prevents notebooks and equipment from damaging the surface of the panels or walls.

Back of storage bin is open to allow panel surface to show. Metal backstop prevents contents of bin from damaging panel surface.

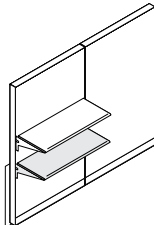
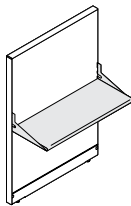
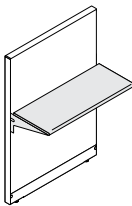
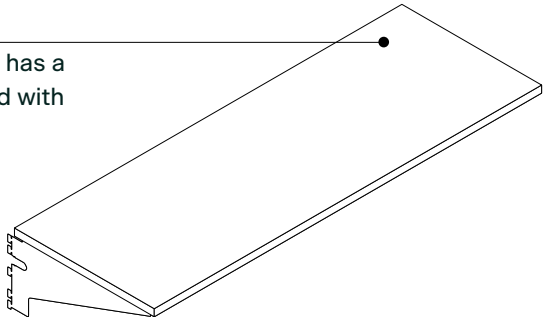


Overhead storage bin height accepts standard and A4 binders.



Depth	15 ³ / ₄ "
Width	24", 30", 36", 42", 48", 60", or 72"
Height	16 ¹ / ₄ "

Laminate common shelf has a wood core and is covered with Low-Pressure Laminate.



Depth	15"
Width	24", 30", 36", 42", or 48"
Height	7 ³ / ₄ "

Laminate common shelf ships with steel support brackets. Support brackets hook into the vertical panel slots or wall channel and lock into place with a safety catch. Support brackets can be used in either orientation.

Shelf may be mounted at 38"H or lower if another panel-mounted component prevents it from being seated upon.

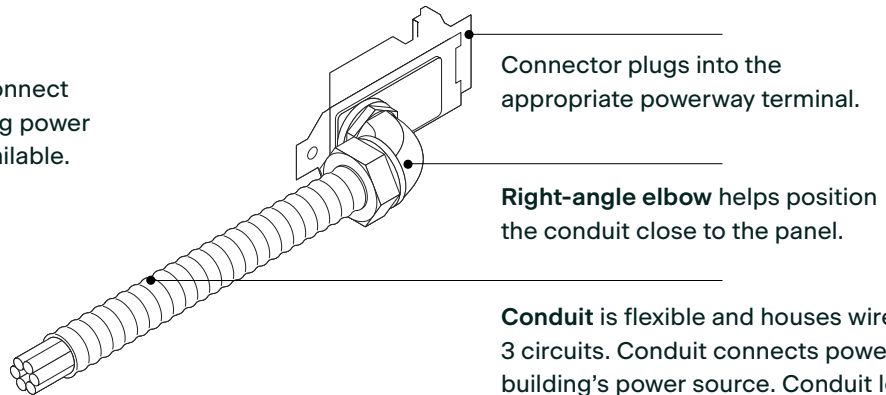
Tektis Power

Base Power-In

Base power-ins are field installed and connect the panel electrical system to the building power source. All five wiring schematics are available.

Power-ins are UL listed and CSA certified. Local electrical codes vary, so consult with your local authority having jurisdiction as they have final say if the products as installed are compliant with local code.

All the components in an electrical distribution network must use the same wiring schematic. Components are color coded and keyed to make it impossible to connect mismatched parts. Building power source can come from the floor, wall, or column.



Connector plugs into the appropriate powerway terminal.

Right-angle elbow helps position the conduit close to the panel.

Conduit is flexible and houses wires for 3 circuits. Conduit connects power-in to building's power source. Conduit leads must be hardwired to the building wiring by a qualified electrician or engineer. Conduit is 6' long and 1/2" diameter. It is available in black plastic only.

2" x 2" Power and Cable Pole

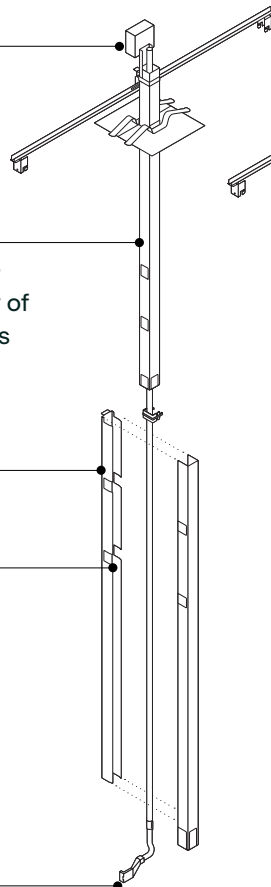
Junction box, at the top of the power pole, encloses the hardwired connection to the building's electrical service.

Power poles bring building power from the ceiling to the powerways in the base cavity of panels. They can also be used to run cables into the panel base cavity.

Trim conceals powerway and cables routed to the base of the panel.

Knockout

Flag connector attaches to either end of the powerway on 30"W to 60"W panels. Flag connector attaches to green end of the powerway on 24"W panels.



Hanger bar secures the top of the pole to the ceiling grid

Ceiling trim plate

Cable poles provide a space to route cables from the ceiling to the base cavity of a panel.

Knockouts allow data distribution in change-of height conditions.

Retainer attaches to the end of a panel with screws that attach below the top cap. Panel remains undamaged so power and cable pole can be removed and relocated later.

All the components in an electrical distribution network must use the same wiring schematics. Components are color coded and keyed to make it impossible to connect mismatched parts.

Tektis Power

Powerway

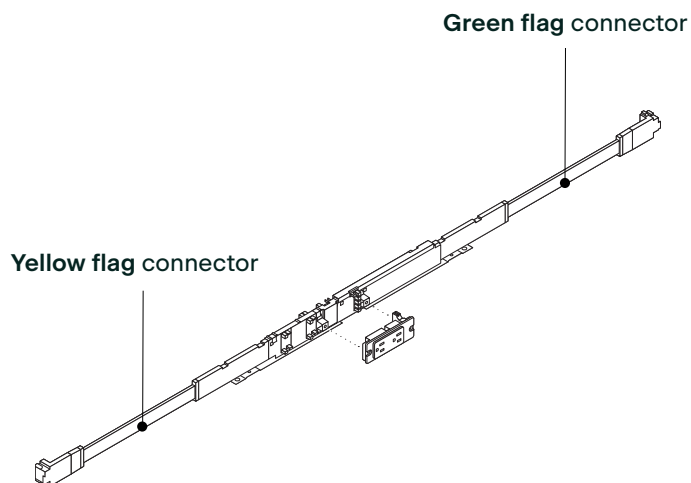
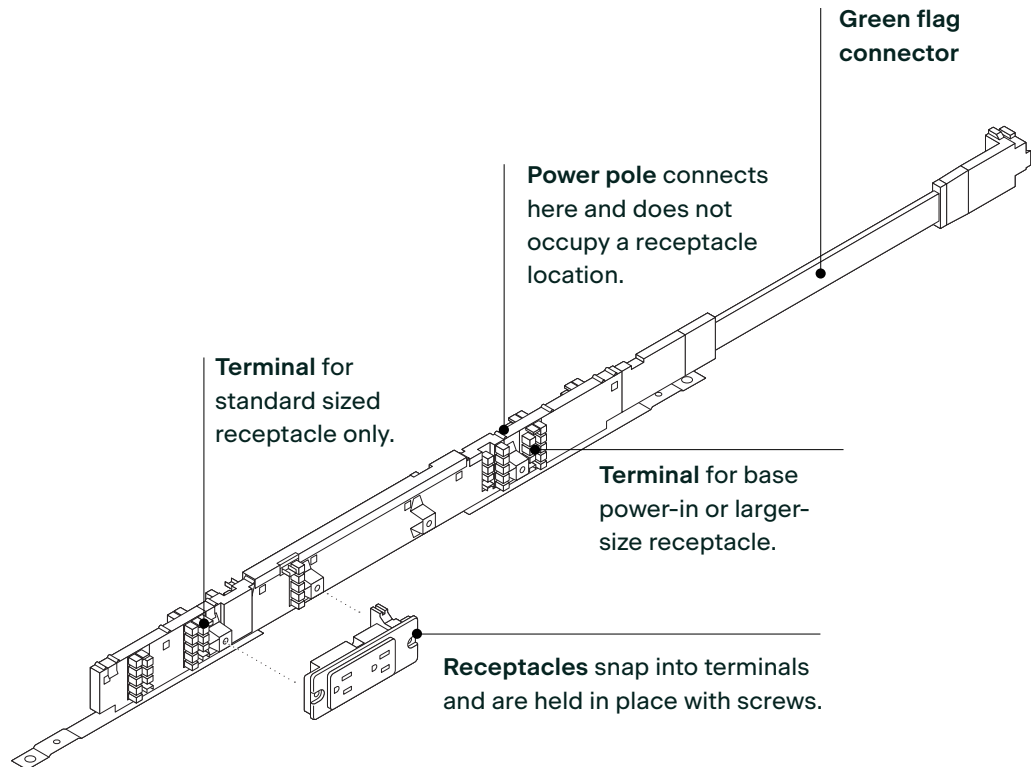
Powerways that are installed in the panel base cavity allow power to be distributed wherever panels go. They are concealed when properly installed. All five wiring schematics are available.

All the components in an electrical distribution network must use the same wiring schematic. Components are color coded and keyed to make it impossible to connect mismatched parts.

All AMQ electrical systems are designed in compliance with the National Electrical Code (NEC) and Canadian Electrical Code (CEC) to function as a multiwire branch circuit. Installations should be made in accordance with the NEC or CEC provisions for multiwire branch circuits.

Local electrical codes vary. Consult a qualified electrical contractor or engineer for the proper installation of electrical equipment. Chicago, New York City, and Los Angeles have special requirements.

Tektis panels that are 24"W use a double whip powerway with one green end and one yellow end connector.



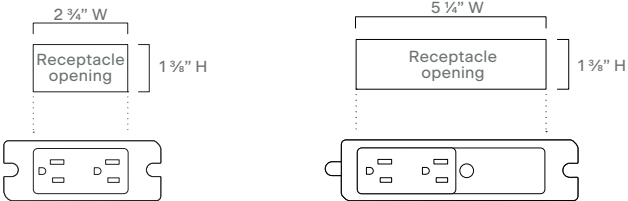
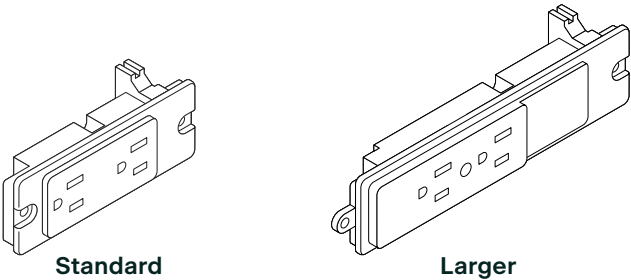
Tektis Power

Receptacles

Receptacles are ordered separately and installed in the field in knockout opening. They plug into terminals on a powerway and are secured with screws. Receptacles are designed to link to a specific circuit.

All receptacles are duplex (two outlets) and are available in two sizes—standard and larger—in 15-amp. Specific lines may be limited to and fit only in specific receptacle locations in the base.

Smaller-size openings of the base cover house only standard-size receptacle. Receptacle is located 12" from end of base trim.



Product Details

Numbers printed on the receptacles indicate the line number. Label on receptacle indicates which circuit the receptacle connects to, so the user can control which devices are on specific circuits.

With the 3-circuit separate neutral system, these designations are with letters A, B, or C as compared to 1, 2, 3, or 4 in the other systems.

Specific circuits are accessed through the powerway by installing the appropriate receptacle in the receptacle location. All five wiring schematics are available.

Standard	Larger
3-Circuit, Shared 	
3-Circuit, Separate Neutrals 	

Tektis Finishes

Panel Fabrics (Alloy)

P525 Polar	P526 Skim	P527 Bubbly	P528 Tern
P529 Shore	P530 Asti	P531 Silver	P532 Oxide
P533 Element	P534 Construct	P535 Currency	P536 Iron

Panel Fabrics (Boccie)

P200 New Rice	P201 New Almond	P203 New Camel	P204 New Opal
P205 New Mist	P206 New Plum	P208 New Spearmint	P209 New Sky

Glass Stackers

Glass

Worksurfaces / Shelves

2L84 Milk White	2L30 Arctic White	2L83 Seagull	2LAW Ash Wenge
2LCN Clay Noce	2LAT Acacia	2LAK Clear Oak	2LCW Clay Wenge
24L0 Graphite Walnut	25L5 Virginia Walnut	25L8 Clear Walnut	26L1 Natural Cherry
2L09 Clear Maple			

Panel Trim / End Panel / Storage / Overhead Bin

7207 Black	4799 Platinum Metallic	7243 Seagull	7225 Sand	7238 Fieldstone
---------------	---------------------------	-----------------	--------------	--------------------

● Panel Trim and End Panel only



Tektis Features



An effective use of real estate considers the needs of the organization as well as the individual. Tektis creates highly effective individual spaces in a small footprint with its thin 2" panel design.



Tektis components are designed for ease of configuration and ordering. When it comes to installation, Tektis arrives as a pre-built panel and is set up in no time!



Tektis creates a primary 'home base' for the individual that manages privacy, focus & control. With so many options, dimensions & storage, the work environment can be visually cohesive, yet flexible enough to work for everyone.



Modular, versatile, durable, and simple to order.

Installation Time

Installation time varies

Care & Maintenance Instructions

Wipe with a damp cloth using water or gentle, nonabrasive cleaner. For guaranteed safety, patch test with diluted cleaner before wiping entire surface. Wipe dry with a clean cloth.

Warranty

Limited Lifetime Warranty
Markerboard - 3 Years

Certifications

Indoor Advantage Gold™

BIFMA LEVEL® 2

ANSI/BIFMA X.5.6-2016

UL 1286 Standard for Safety of Office Furnishings (Electrical)

ATSM C423 & E90 Standard Test for Sound Absorption



Environment

LEED – Interior Design & Construction, Operation & Maintenance, Design & Construction

Pre-Consumer Recycled Content : 39.55%

Post-Consumer Recycled Content : 9.384%

Recyclability: 59.084%

amqsolutions.com

